

## ENERGY SOURCE

**A** new proposal to generate electricity from waste at a £40m plant at Pebble Hall Farm, near Theddingworth, has recently been put before Daventry planners.

Plans tabled earlier this year, to produce power from oils derived from food waste, were withdrawn following worries raised by local residents concerning smells, storage of raw material and emissions. Now we hear that an application based on the gasification of wood waste, similar to plans approved in 2008, (but not implemented) is being promoted.

In the new proposals the promoters are seeking to modify the existing permitted development by increasing the capacity of the plant from 40,000 tonnes of wood waste per year to 72,000 tonnes. To accommodate the greater through-put, the plant would need to be bigger in size and height and the smoke-stack height would be increased to 30m in order to disperse emissions. The gasification process involves 'cooking' the wood waste in a sealed vessel and capturing the gas produced to fuel engine-driven electricity generators.

The generators would run 24 hours a day with a projected capacity of 10.4MW per hour, which would be fed directly into the National Grid via an underground cable to Market Harborough. The promoters also indicate that there is a possibility that waste heat from the plant could be used elsewhere within the site for other processes or exported for local domestic heating. Wood waste to fuel the plant would be sourced mainly from within a 30 mile radius of the plant, as is the current supply, and traffic would be directed via the motorway system to M1 junction 20 and the A4304. Most of the residue from the plant would be retained on the farm as soil conditioner and fertiliser and the amount of unusable ash to be removed to landfill would be minimal.

*The promoters of the wood waste energy generating recycling facility also envisage that the food waste digester project, which was withdrawn earlier this year, could return in a modified form to link in with infrastructure of the wood waste generator.*

### VILLAGE HALL RICHES...

**A**s we go to press we hear that the Village Hall committee have been awarded a grant of £40,000 from Lafarge Aggregates towards the refurbishment of the kitchen, toilets and heating of the Village Hall. The committee is still looking for willing volunteers to help run the hall and to help with the refurbishment project next year, so, if you can help please email: husbandsbosworthvh@gmail.com.

Also, at the end of November, ten volunteers from *Coca-Cola* and *Tesco* came along to the Village Hall to freshen it up with a lick of paint. *Homebase* in Market Harborough kindly donated some of the paint and paintbrushes for the project.

### LIFE IN BOSWORTH

**W**e hope that you have been busy recording life in the village for our photographic record of 2013. You have until the end of the year, when details of how to submit entries will be published in the *Bugle*. Exhibits will be displayed at a Flower Festival in early spring and visitors will be asked to vote for their favourite picture. The 12 most popular pictures will be made into a calendar for 2015.

Pictures may be of any subject but must be taken within the parish and should depict everyday life, personalities or events taken during 2013. Proceeds from the sale will go towards church funds. All pictures will be retained by the Historical Society to form part of the archives of Village Life in 2013.

### PRE-CURSER...

**P**erhaps it was no coincidence that a flyer recently distributed around the village, promoting the menu at the new Kilworth Springs brasserie, should arrive on Hallowe'en... The set-menus for Kilworth's new venture sounded very impressive... and, as a special promotional offer you have the choice of two or three curses!

### CATTHORPE WORK STARTS

**P**reparatory work, including the erection of boundary fences and establishment of a works compound at the A14/M6/M1 junction near Catthorpe has recently started. Temporary diversions and closures of Rights of Way will be in operation whilst work, due to start in spring 2014, is under way.

ISSUE 208

DECEMBER 2013

### THE BUGLE TEAM

#### Editor:

Melvyn Forman  
Firs Fm, Welford Rd. Tel: 880281  
Email: bosworth\_bugle@talk21.com

#### Treasurer:

Ralph Horton  
18 Highcroft Tel: 880526

#### Advertising:

Sylvia Price  
3 Highcroft Tel: 880902  
Email: sylvia1\_p@hotmail.co.uk

#### Contacts:

Mike Price  
3 Highcroft Tel: 880902

Jo Horton  
18 Highcroft. Tel: 880526

Frances Smith  
10 Butt Lane Tel: 880225

Penny Mattock  
9 Fernie Court Tel: 881140

Heather O'Connor  
6 Cherry Tree Close Tel: 880165

#### Postal Subscription/distribution:

Lorrie Forman Tel: 880281  
Email: l.forman@talk21.com

[www.husbandsbosworth.info](http://www.husbandsbosworth.info)

**COPY DEADLINE**  
**15<sup>th</sup> OF THE MONTH**  
**PRECEDING PUBLICATION**

**twitter** 

@bosworthbugle

### THANKS...

**M**any thanks to Chris Price and Mike Pennington for their stalwart efforts helping to build a fine bonfire for the village bonfire party. Thanks also to Jackie Fletcher for slaving over a hot tomato soup bowl! Special thanks to Stuart Bingham for providing the excellent fireworks for the display and to Melvyn for lighting them in the teeth of a gale!

### FREE PARKING

**H**arborough Council have agreed to waive parking charges across the district, in council-owned car parks, on the three Saturdays leading up to Christmas, starting on December 7<sup>th</sup>.

## POSTBAG

*From Ann & Chris Saxton, Bell Lane*

We would like to wish all our friends in Bosworth a very happy Christmas and prosperous New Year. As we are not sending local cards this year we would love you to pop in for a cuppa sometime before Christmas.

*From The Sangra Family, Bosworth House*

We would like to extend our greatest thanks to all the support we have received about the improvements to our house and, in particular, the wall since moving into the village. The wall fronting Berridges Lane was something which, in our opinion, was causing a hazard to the public, hence the reason the wall has been restored. Thanks again.

*From Clive Smith, Leicester*

You may remember me. I was the landlord of The Bell Inn from 1998 to 2002. I follow the village's comings and goings with interest each month [via the on-line version of the *Bosworth Bugle*], which brings back very fond memories of your village and its residents. I'm delighted that the village appears to be thriving. May I take the opportunity to wish everyone a Very Happy Christmas and Healthy New Year! Thank you for making my time in Bosworth a memorable one.

*From Alena Burton, Macclesfield*

Your piece about the Bosworth Flyer reminded me of Dick Cross, a descendant of the carrier's family, who was living in the house on the corner of Berridges Lane and High Street, now known as Vine House. As a little boy of six he would be sent off on his own on horseback, sometimes in the dark, to meet the carrier with the extra horse. One of his regular tasks was half an hour's grinding during his dinner hour; oats, beans or barley, which was mixed with chaff and fed to the horses.

### POLICE FILE

**IF YOU HAVE INFORMATION ON ANY CRIMINAL ACTIVITY CALL MARKET HARBOROUGH POLICE on 101**

**Neighbourhood Watch Co-ordinator**

Marion Lewis 0116 2483871

marion.lewis@leicestershire.pnn.police.uk

**NW Community Scheme No. 2123**

**Local Beat Team**

Sgt. 1088 Paul Hardwick

PC 1044 Mark Macey

WPC 4713 Sarah Clarke

PCSO 6569 Peter Willson

PCSO 6636 Ray Wells

PCSO 6573 Steve Adams

WPCSO 6008 Laura Bolton

Voicemail Service 0116 2485675

**Rural & Countryside Liaison Officer**

PC 1448 Sam Bennett

**CRIMESTOPPERS**

**FREEPHONE 0800 555111**

*Lock snapping is a relatively new and simple method used by burglars to break into properties. Most UPVC doors are secured with a euro-cylinder lock, which is easily forced to release the multi-locking points on the door. Newer doors will have a lock that is made stronger to withstand forcing.*

*If you are unsure what locks you have go to [www.locksmiths.co.uk](http://www.locksmiths.co.uk), the website of the Master Locksmiths Association, to find out more.*

## WATCH WORD

*THE NEIGHBOURHOOD WATCH SCHEME WITHIN HUSBANDS BOSWORTH*

### RECENT CRIMINAL ACTIVITY

**SEPTEMBER**

*Vehicle crime, Fernie Court, HB*

*Criminal damage High Street, HB*

*Domestic incident, School Lane HB*

*Burglary Main Street, Theddingworth*

*Vehicle crime, Main Street, Theddingworth*

*Vehicle crime, Station Road, Theddingworth*

*Public order offence, Main St. Laughton*

*Burglary, Middle Street, Foxton*

*Burglary, North Kilworth Petrol Station*

*Damage to vehicles, Foxton Locks carpark*

*Vehicle crime, Midway Lane, Walton*

### CHANGES TO OPENING HOURS

From April 2014 the new opening hours for Harborough's Local Policing Unit will be:

Monday - Friday 10.00am - 4.00pm

Saturday Closed

Sunday Closed

### FATAL4

**Harborough Police have been focusing on their FATAL4 campaign, which highlights the four most common causes of fatalities in motoring accidents: driving whilst under the influence of drink or drugs, speed, mobile phone use & not wearing seat-belts.**

### SID REPORT

Readings from the Speed Indicator Device

**Kilworth Road entry**

Period: 16.10.13 to 23.10.13

Vehicle movements: 12700

Average speed: 39.60mph

*Highest recorded speed: 87mph*

**Kilworth Road entry**

Period: 23.10.13 to 30.10.13

Vehicle movements: 12600

Average speed: 40.00mph

*Highest recorded speed: 76mph*

**High Street westerly**

Period: 30.10.13 to 06.11.13

Vehicle movements: 12013

Average speed: 28.02mph

*Highest recorded speed: 55mph*

**High Street westerly**

Period: 06.11.13 to 13.11.13

Vehicle movements: 12137

Average speed: 27.9mph

*Highest recorded speed: 56mph*

**Northamptonshire Police report a spate of vehicle-related crime in and around Welford in recent weeks.**



**P.C. BUILDING SERVICES LTD**

Established  
27 years



Complete building service  
Specialist in new build  
Quality renovations  
& Extensions

**Tel/Fax 01858 881202**

**Email: [pcbuildserv@btinternet.com](mailto:pcbuildserv@btinternet.com)**

Walton Grange, Bosworth Road  
Walton, Lutterworth, Leics LE17 5RW

## The Bell Inn

Husbands Bosworth

Tel: 01858 880246



**LOOK OUR FOR OUR NEW MENU**

with a weekly selection of specials - all freshly prepared.  
Take-away menu available. Roasts served every Sunday.

**Coming soon - Rock 'n' Roll Bingo !!!!**

# BOSWORTH IN FOCUS

A ROUND-UP OF LOCAL NEWS

## TOASTING THE HAGGIS...

The English Guy burns night is ashes! Now we can turn our thoughts to the possibilities of a *Robbie Burns* Night as an antidote to winter depression. The Husbands Bosworth Scotch Appreciation Society, in association with the Leicester De Montfort Rotary Club and Canine Partners charity, are pleased to announce an extravaganza of celebration on Saturday, January 25<sup>th</sup> in the Village Hall, 7.00pm until late. See the Piper piping in a freshly shot free-range Scottish haggis, a Sikh in traditional highland dress saying grace, an all-action address to the haggis and ITS STARTLING RESPONSE!

Experience a warm, somewhat alcoholic welcome, a full, four-course Burns-themed dinner (wi' a wee dram), Scottish music and participative singing, traditional humorous (but mercifully short) toasts and a Sassenach Auction (... that is, with money!).

All profits will go to charity. What we need from you is £30 per head and early booking, since capacity is limited and will be filled on a first come first served basis. Tables will accommodate 8 people and if you wish to sit with friends then we need bookings of complete or half tables, otherwise we must fill the spaces at random. Drinks, excepting the welcoming libation and wee dram, are bring-your-own. A vegetarian option will be provided on request.

To book, discuss the menu or for any other information please call Theresa Phillips 880075 or Eleanor Murphy 880476. *Lest hin', kilt an' sporran an sae oan ur brow, but yer ain choice...*

## CLASSIC FILM NIGHT

The next Classic Film Night will be on Friday, December 13<sup>th</sup> when we will be showing the Lionel Bart's classic musical, *Oliver*. Mark Lester, Jack Wild, Ron Moody and Harry Secombe belt out a non-stop succession of hits in this all-time great.

## LOCAL NEWS IN BRIEF

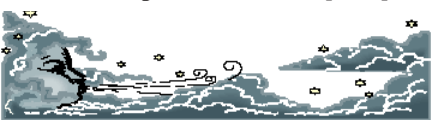
■ The front-desk at **Lutterworth** Police Station will be closing at the beginning of April as part of Leicestershire Police Force's cost cutting

■ A planning application to erect a single 67m high wind turbine at Lodge Farm, **Mowsley** has been filed with Harborough planners

■ Ella and William Miles, of **Welford** Christmas Tree Farm, have again been awarded the honour of supplying the wreath for the front door of 10 Downing Street. They supplied a similar wreath in 2011.

## WEATHER LOG

**OCTOBER 2013** [2012]  
**Rain:** 129.5mm (5.2") [74.25mm]  
**Wettest day:** 36mm (1.4") [12mm]  
**Highest temp:** 19°C [17°C]  
**Lowest Temp:** 1°C [-1°C]



## MILLENNIUM WOOD

Regular work parties are held at the village's community woodland on Kilworth Road. If you have a couple of hours to spare and fancy doing a bit of manual work in the fresh air then do come along.

The next work party will be on Saturday, December 21<sup>st</sup> from 9.30am - 12.00noon.

Call Lorrie on 880281 or Jackie on 880910 for more information.

## HEXAGON

The *Hexagon* newsletter, which serves the five parishes of the Hexagon Benefice is still looking for a new Editor.

If you fancy practicing your journalistic skills give Beryl Cane a call on 0116 2478136.

## LOROS EVENT

You are invited to a Coffee Morning on Saturday, December 7<sup>th</sup> from 10.30am to 1.00pm in the Shoot Room, by the Clock Tower, in Blaston, near Medbourne.

Various stalls. All proceeds to go to LOROS (Leicestershire and Rutland Organisation for the Relief of Suffering). For more information call Lorrie 880281 or Penny 881140.

*You may have noticed there is a collecting tin in the Post Office. Please feel free to put your loose change in or make a donation.*

## VILLAGE LUNCH

The Village Christmas Lunch will be on Thursday, December 19<sup>th</sup>. The cost of the meal, with all the usual Christmas trimmings is £10. There will also be a Hamper Raffle in aid of LOROS.

Call Janice on 880668 to book a place or arrange transport to the venue.

\*\*\*\*\*

*A reminder: There will be no lunch in January due to refurbishment of the kitchen at Kilworth Springs. The next village lunch will be Tuesday, February 18<sup>th</sup>.*



**Real ales**  
**Home cooked food**  
**Large beer garden**  
**B & B**

---

**G N R Band**  
**1st Thursday of the month**  
**Jazz Night**  
**3rd Tuesday of the month**

---

**Wednesday**  
**£5 Lunches**  
 CHOOSE FROM  
 Roast of the Day. - Ham, Egg & Chips.  
 Small Beer Battered Haddock.  
 Vegetables in a tarragon sauce, with a puff  
 Buy a main course & get a  
 pudding for only £2!

---

TEL: 01858 575075  
 Welford, Northants. NN6 6JQ  
 thewharfinn@hotmail.com www.wharfinn.co.uk



## Winter Green Fees

Why not play one of the best winter courses in Leicestershire with these great deals? Valid to March 31<sup>st</sup>

### Winter Warmer (Monday - Friday)

18 Holes & Chef's Dish of the Day £24 pp (Must have 4 players)

### Weekends

Open - 1pm £28 pp (4 Ball £100)

1pm - Close £20 pp (4 Ball £70)

### Weekdays

Open - 1pm £26 pp (4 Ball £80)

1pm - Close £18 pp (4 Ball £60)

**Sample our new Brasserie Menu and take advantage of our fantastic promotion. Book a table of 4 for a 2 or 3 course evening meal & get a complimentary bottle of house wine. For details or to book call 01858 575 082 or email admin@kilworthsprings.co.uk**

## COMPLETE CAR CARE

Accident repair specialist

Bodywork, dent, scratch and stone-chip repair

Servicing, alloy refurbishment, welding

MoT repair

Valeting, full body polish

Parking sensors, tyres & exhausts, etc. fitted

Call Ben on 01858 880404

Based at Unit 2, Pebble Hall Farm

between Husbands Bosworth and Theddingworth



# SCHOOL REPORT

HUSBANDS BOSWORTH C. of E. PRIMARY SCHOOL Head Teacher Louisa Morris

## THE BOOK OF HOURS

You can't have missed the hub-bub and excitement that surrounded the discovery of Richard III in Greyfriars car-park last year. But locating and authenticating his bones was only the start of the process to find and intern the former king.

King Richard III was a devout man and had an extensive library and very many of his books are housed in universities across the UK. One book, 'The Book of Hours' was found amongst his possessions following his death in battle. This precious manuscript contains reflections of key dates and celebrations of the Christian year. The book remains one of the most important pieces of medieval literature surviving today.

To commemorate King Richard, Leicestershire schools were asked by the diocese to take part in producing a modern day Book of Hours, which is to be in art and text form. A mastercopy of the book will be kept in Leicester Cathedral, with printed copies being distributed to both schools taking part in the project and to significant others around the world. Our Year 6 children were delighted to be asked to take part and set about the painstaking task of creating major pieces of art work for submission. Our title is: 'The Second Day of Creation: Water and Heaven'.

The original art pieces are now with the diocese ready for publishing later in the year. A display of the children's work will soon go on display in All Saints Church, Husbands Bosworth, for all to view.

## FOBS NEWS

We would like to thank everyone who has supported FOBS throughout 2013.

The money that has been raised has helped with coach hire for school trips, new chairs, new interactive white board and much more. We hope you all have a Merry Christmas and a Happy New Year.

## RAVEN FRAMING

*Do you have a painting,  
certificate, drawing or  
similar  
that you would like  
mounting and framing?  
Choice of frame mouldings  
and mountboards  
available, or 'specials' can  
be ordered.  
Call Nick Raven  
on 880824 for a quote.*

## ALICE 'N' MAY

Vanishing Vintage has some unique gifts for Christmas! Cards by Rick Burdick, lovely cushions made from vintage fabric, outfits galore with shoes and hats, even a family of hand knitted bears. Call in for coffee and mince pies - funds in aid of Red Cross Philippines Appeal. Opening times 10.30am to 5.00pm Friday & Saturday, 11.00am to 4.00pm Sunday, with extra days in December.

## BYGONE BOSWORTH

*Images from the Historical Society's Archive Collection*

A suitably wintery scene was called for this month, so this picture came to mind. The photo is of the railway as it passed over the Broad Lane crossing - a chilling scene, not only for the snow but also because it was taken just before the closure of the line on June 6<sup>th</sup> 1966.

In a last desperate act British Railways have cleared the sides of the cutting. Note also, the crossing keeper's cottage, standing forlornly on the right.



## ACTIVITY GROUPS 2013

<b>All Saints Parochial Church Council</b>	Contact: Brian Smith 880225
<b>Art Workshop</b>	Contact: Ann Saxton 880971
<b>Baby-Sitting Circle</b>	Contact: Claire Scott 880295
<b>Badminton Club</b>	Contact: Ralph Horton 880526
<b>Beaver Scout Troop</b>	Contact: Stuart Dainton 881431
<b>Bosworth Belles</b>	Contact: Linda Lawton 880503
<b>Bosworth Tots</b>	Contact: bosworthtots@hotmail.co.uk
<b>Brownie Guides</b>	Contact: Bonny Kettell 880944
<b>Conservative Association</b>	Contact: Robert Maxwell 880361
<b>Craft Group</b>	Contact: Gail Wilmot 880413
<b>Handbell Ringers</b>	Contact: David Staples 880668
<b>Historical Society</b>	Contact: Melvyn Forman 880281
<b>Husbands Bosworth Rainbows Group</b>	Contact: 881757 or 881442
<b>1st Kilworth Scouts/Beaver unit</b>	Contact: Stuart Dainton 881431
<b>Lutterworth African Drumming Group</b>	Contact: Ralph Horton 880526
<b>Playing Field Committee</b>	Contact: Jennifer Rogers 880401
<b>Royal British Legion</b>	Contact: Robert Maxwell 880361
<b>Tennis Club</b>	Contact: Jennifer Rogers 880401
<b>Tower Bell Ringers</b>	Contact: Geoff Armitage 880066
<b>Workers Education Association</b>	Contact: Sally Sherratt 571064



The UK's only Tank Paintball Battle Venue  
Tank Drive Experiences \* Dads & Lads Experiences  
Military Vehicle Driving \* World War II Military Vehicle Driving  
Children's Military Vehicle Party \* Woodland Paintball \* Archery  
Air Rifle Shooting

\*\*\*\*\*CHRISTMAS GIFT VOUCHERS NOW AVAILABLE!\*\*\*\*\*

Suitable for individuals, Family Fun, Corporate Events,  
Stag/Hen Parties.....\*\*Gift Vouchers Available!\*\*

www.armouredgeddon.co.uk Tel: 01858 880239

Bookings by Appointment Only



## C Begley Building Ltd

Local, third generation  
house-builder

Complete interior and exterior building projects

New-build or maintenance work

Hard landscaping, driveways

& garden structures

Listed Property restoration & conservation

NHBC Registered

01858 880405 or 07748 184659

chrisbegley123@aol.com

## TRADE DIRECTORY 2013

### Gordon Begley

Building & roofing contractor.

Contact: Gordon Begley 880028

### Croft Farm Bed & Breakfast

AA 4\*\*\*\* accommodation

Contact: Jane Smith 880679

### Honey Pot Lane Bed & Breakfast

A 4\*\*\*\* welcome in a quiet rural backwater

Contact: Carolyn Goffe 880836

### Mike Price Heating Engineer

Oil-fired boiler servicing & repair

Contact: Mike Price 880902

### Paul Bolton School of Motoring

Expert driving instruction

Contact: Paul Bolton 880115

### Rob Dargue Carpentry & Building

General carpentry & woodwork

Contact: 07834 872205 or 880803

### Totally Trees Ltd.

Tree surgery and stump grinding

Contact: Jacqui Mitchell 01455 554182

### Wharf House Kennels

Kennel and cattery services

Contact: Kim McGuigan 880905

### Woodpecker Tree Surgery

All aspects of tree surgery undertaken

Contact: Chris Wright 880183

## CRAFT FAIR

The Craft Group would like to thank everyone who supported the craft fair by buying, selling and helping in any way. It was a colourful and lively day with some beautiful crafts on sale. We raised at least £300 for the Air Ambulance.



## Pass with an Expert

- \* Free sign-up for on-line Theory Test
- \* Professional Driving Standards Agency Instructor
- \* New Peugeot 208 with dual controls
- \* Flexible pick up and drop off to your requirements including evenings & weekends

For further information or additional help & advice please call or email  
Paul Bolton School of Motoring  
01858 880115 / 07736 457986  
paul\_bolton@hotmail.com

## ACTIVITY GROUPS

### HISTORICAL SOCIETY

The next meeting of the Historical Society will be the annual Quiz and Social Evening on Wednesday, December 4<sup>th</sup> at 7.30pm in the Church Hall, Honey Pot Lane.

\*\*\*\*\*

*In the New Year we are welcoming author and historian, Gareth King back to regale us with Tales of the Outlaws of Old Leicestershire.*

*In February local auctioneer, Mark Gilding, will be inviting us to bring in our treasures for an informal valuation evening.*

*Peter Liddle will be returning in March to take us behind the scenes of the recent Time Team 'digs' in Leicestershire.*

For more information about the Historical Society call Melvyn on 880281.

### RUNNING TOGETHER

I am a Healthy Lifestyle & Weight Consultant and currently have running and walking groups that meet weekly at North Kilworth and Lutterworth. I would be happy to set up a similar running, walking or combined slimming group at Husbands Bosworth if there is demand for one. To gauge interest please contact Nikki on 07827911146 or info@runningtogether.co.uk. See my website at: www.runningtogether.co.uk

### CHURCH HALL

The Church Hall is now available for hire on Thursdays, during the daytime. If anyone is interested please call Janice on 880668.

### VILLAGE HALL BOOKINGS

Elizabeth Bromley 881441

www.husbandsbosworthvillagehall.co.uk

### CHURCH HALL BOOKINGS

Janice Staples 880668

Bob Hutchings 880131

### SPORTS PAVILION ENQUIRIES

Audrey Marlow 880316

### BOSWORTH BELLES

A firm favourite on the Bosworth Belles calendar, the next meeting on Wednesday, December 11<sup>th</sup> will be the Christmas Party and Quiz!!

Join us for a fun get-together including a quiz, raffle and pub supper

Contacts - Jane 07977 040091 or Carol 07739 663083 for more information.

### BADMINTON CLUB

Club Night is now Thursday 8.30pm to 10.30pm in the Village Hall. Play is friendly and informal and new playing members are assured a warm welcome.

For more information call Ralph on 880526.

### BOSWORTH TOTS

Bosworth Tots is a stay-and-play group for tots (from birth to pre-school) and their parents, grandparents, carers and child minders. We meet on Thursday mornings 9.45am to 11.45am at Husbands Bosworth Village Hall. Fees are: £2 for one child and then 50p for every additional child after that. For more information email: bosworthtots@hotmail.co.uk

Call on: 881480 or find us on Facebook: Bosworth Tots

## CHRISTMAS PARTIES at the Elizabethan Welford

Book your Christmas party with us throughout December. We can cater for up to 100 people in our recently face-lifted dining room.

How about joining others for a party night on  
7<sup>th</sup>, 13<sup>th</sup> or 21<sup>st</sup> December.  
£16.95pp for a 4 course meal, disco, festive crackers, table cloths & decorations

BOOKINGS BEING TAKEN NOW

Call 01858 575311

email: elizabethanwelford@hotmail.com

## Karting

Leicester Airport, Gartree Rd, Gt Stretton, Leicester. www.stretton2000.com

### The UK's Premier Karting experience

- 850M floodlit racing circuit
- Licensed Bar & Function room
- Stag & Hen Parties
- Corporate & Team Building Activities
- Childrens Parties
- 60 Mph, 300cc Thunder Karts
- Kart Club & Championship Races
- Junior Kart's Available
- Gift Vouchers Available
- Arrive & Drive Sessions

**Stretton Circuit 0116 259 2900**

Open 7 days a week 10.00am - 9.00pm



- Open fires swept
- Stoves swept & serviced
- Modern cleaning techniques used
- Free smoke test on every chimney
- Certified by the Guild of Master Chimney sweeps

Please call  
Paul on  
07801 350298

www.EliChimneyServices.co.uk

# PARISH COUNCIL NEWS

## Report of the Parish Council Meeting held on Tuesday, November 5<sup>th</sup> 2013.

Five Council members and two members of the public were present.

Minutes of the previous meeting were read and approved.

### Visitors' Questions

Louisa Morris, Head Teacher at the village school, sought Council's co-operation in fundraising alongside the school for a defibrillator. Council holds funds for a defibrillator project from a number of village events and organisations and welcomed a joint approach to further fundraising. On-going costs and other matters relating to the provision of the facility were discussed. It was agreed to seek further information and invite representatives of the school to any discussions.

Mr. Bill Piper, District Council candidate representing UKIP, introduced himself and discussed his aspirations for working within the District Council should he be elected in the forthcoming election.

### Matters Arising

A number of issues raised at the last meeting for discussion with the Clerk were discussed. These included arranging a meeting with the mowing contractors regarding the quality of work in the cemetery during this season (a meeting had yet to be arranged), quotes for restoration work to the Chapel of Rest (awaiting further quotes) and resurfacing of the Play Area carpark (seeking further quotes).

It was agreed to defer a meeting with allotment holders until February so that agreements could be implemented in the new letting year.

Clerk was asked to contact Highways again about the poor condition of the road surface on the A5199 past Wheler Lodge.

### Cemetery

Clerk informed Council that she had been trying to arrange a meeting with the grass-cutting contractors.

### Playing Field & Play Area

Council noted an area of subsidence under part of the matting behind the swings. The contractor had suggested a simple repair rather than lift and re-lay the whole area.

PIR lighting has been installed on the outside of the Pavilion building for security and amenity purposes.

### Allotments

Clerk agreed to source stakes for marking the boundaries of the plots.

Council noted that the concrete pot, which had been dumped on site was still there.

### Traffic Issues

Council heard that using SID on Welford Road had been abandoned whilst traffic lights outside the Knights Close site were operating as the queuing traffic was corrupting the data.

### Rural Housing Scheme

Council heard that an official opening of the Knights Close development had been delayed due to problems connecting services to the site and adverse weather conditions.

### Correspondence

Council discussed a letter relating to a matter on the allotments. Clerk agreed to contact the writer.

### Any Other Business

Concerns were raised by a Theddingworth resident regarding a proposal to erect a wind turbine near Mowsley. Council asked that they be kept informed of this if an application was filed.

It was brought to the notice of members that the hinges on the Millennium Wood dog-poo bin had broken. Mr. Forman agreed to repair this.

Mrs. Hobson discussed a Broadband Stakeholders' meeting that she had recently attended, which she felt showed more encouraging signs that High-Speed Broadband provision would be available to Bosworth subscribers in the near future. Concerns were raised however, that most Bosworth subscribers appear to be connected directly to the exchange, where High-Speed Broadband was likely to be directed through on-street cabinets, which might mean a considerable infrastructure investment in the village.

A canal and communities liaison meeting had been arranged by the Canal and River Trust. Mr. Forman agreed to represent Council at this meeting.

It was noted that the condition of the car parking area at the Millennium Wood had deteriorated due to the recent wet weather. It was hoped that some spare stone would be available from the Knights Close development to 'make up' the area.

Council heard that work to lay the southern boundary hedge at the Millennium Wood had started.

*The next meeting of the Parish Council will be on Tuesday, December 3<sup>rd</sup> at 7.45pm in the Committee Room of the Village Hall.*

**PLEASE NOTE: THERE WILL BE NO PARISH COUNCIL MEETING IN JANUARY.**

## LOCAL OFFICERS

### Husbands Bosworth Parish Council:

#### Councillors

William Fletcher	880910 (Chairman)
Melvyn Forman	880281
Heather O'Connor	880165
Susan Fisher	880026
Stuart Brain	881615
Patricia Hobson	880070

**Parish Clerk** Jackie Fletcher,  
13 School Lane,  
H.B. LE17 6JU  
Tel: 880910

E-mail: [jackiehbpc@btinternet.com](mailto:jackiehbpc@btinternet.com)

**District Councillor** Leslie Bowles  
32 Westfield Crescent  
Welford  
Northants NN6 6HY

**County Councillor** Graham Hart  
Lilac Cottage  
Willoughby Waterleys  
Leicester LE8 6UF  
Tel: 01162 478600

E-mail: [graham.hart@leics.gov.uk](mailto:graham.hart@leics.gov.uk)

## DIANE E. HALL

### Beauty Therapist

\*\*\*CHRISTMAS TREAT FOR DECEMBER & JANUARY\*\*\*

Relaxing facial, including shoulder massage &  
manicure £25 (usually £35)

Full range of luxury treatments,  
gift vouchers & presents available.

Stockist of Susan Molyneux Skin-care Products

Husbands Bosworth Salon

Tel: 01858 880567 or 07732 571714

## WOODPECKER

### TREE SURGERY

All aspects of tree-work undertaken from dismantling  
large roadside trees to pruning and reshaping small  
garden trees.

We also offer a stump grinding service.

Professionally qualified and insured.

For free quotation and advice call

Chris on: 01858 880818

[www.woodpeckertrees.com](http://www.woodpeckertrees.com)



# CHURCH NEWS

All Saints Parish Church, Methodist Chapel & St. Mary's Roman Catholic Church

## VIEW FROM THE RECTORY

As I write this I am preparing for Advent services and starting to think about Christmas. By the time you read this, Advent will have started and Christmas will be in the forefront of all our minds.

The seasons pass so quickly. In all the hustle and bustle it is easy to forget about preparing ourselves for Christmas. We think about gifts and visits to family and friends, about food to share, about how to decorate our homes, about special outings or what to watch on TV. We write cards or send e-cards to friends from times past, to show they are not forgotten and wish them well and maybe we receive a few catch-up letters from those who remember us too. All these actions show our love for one another and our desire to celebrate and share together. Love and celebration are at the heart of the reason for the season - God showing his love for us in coming to live among us as the baby in Bethlehem. The birth of any child is a good reason to celebrate and the birth of the Christ-child is a celebration we can all share in. So in all your preparations, don't forget to leave time to prepare yourself to receive afresh the love of God found in Jesus, which is at the heart of the season. *Liz*

## Two events for January

We will be holding a Plough Service at All Saints Church, Theddingworth, on Sunday, January 19<sup>th</sup> at 10.30am, when we will be asking God to bless the work of our local farms. Also on Sunday, January 19<sup>th</sup> at 3.00pm All Saints Church, Husbands Bosworth will be hosting the United Service for the Week of Prayer for Christian Unity.

## Parish Notices

### Holy Matrimony

November 9<sup>th</sup> 2013 All Saints  
*Nicholas Gray & Justyna Zuk*



**SAVE 50% ON YOUR OIL  
OR LPG COSTS**  
Tundra Biomass Boilers

Yes you can save up to 50%  
by installing a biomass boiler  
using wood pellets instead of  
oil or LPG.

Call for a free survey  
**0800 334 5900**

## METHODIST CHURCH NEWS

Our Carol Service will be taken by Mrs. Jeanne Moore on Sunday, December 22<sup>nd</sup> at 6.30 pm.

The Methodist Church January Coffee Morning will be on Wednesday 18<sup>th</sup>, 10.00-12.00 at 25 High Street, Husbands Bosworth.

Everyone is welcome to come and join with us at these events.

## MEMORIAL PEAL

Geoff Armitage led a team that rang a half-muffled quarter-peal as a tribute to the Fallen, on Remembrance Day and in memoriam of Paul Armitage, tragically killed on November 10<sup>th</sup>, 2009.

## METHODIST CHURCH

### Coffee Morning

Wednesday, December 18<sup>th</sup>  
10.00am-12.00noon.  
at the home of John & Margaret Scurrah  
25 High Street.  
Visitors always welcome.  
*Proceeds in aid of Action for Children*

## †CHURCH SERVICES †

### Hexagon Benefice

- |    |   |
|----|---|
| 1  | 9.00am Communion Mowsley<br>9.30am Family Service Shearsby<br>11.00am Communion Thedd.<br>11.00am Family Service B'thorpe<br>5.00pm Advent Service HB<br>6.00pm Communion Arnesby |
| 8  | 9.30am Communion Shearsby<br>9.30am Family Service Arnesby<br>11.00am Family Comm. HB<br>4.00pm Christingle B'thorpe<br>6.00pm Evensong Mowsley                                   |
| 15 | 10.30am Benefice Service Mowsley<br>4.00pm Carol Service Thedd.<br>6.00pm Carol Service B'thorpe  |
| 17 | 6.00pm Carol Service Mowsley  |
| 22 | 9.00am Communion Mowsley<br>5.00pm Carol Service HB<br>6.00pm Carol Service Shearsby<br>6.00pm Carol Service Arnesby  |
| 24 | 3.00pm Crib Service Thedd.<br>4.00pm Crib Service Arnesby<br>5.00pm Crib Service HB<br>11.15pm Midnight Comm. HB<br>11.15pm Midnight Comm.<br>Shearsby                            |
| 25 | 10.30am Benefice Service<br>B'thorpe  |
| 29 | 10.30am Benefice Service HB   |

### Methodist Church

- |    |  |
|----|--|
| 1  | Mrs. Kathy Morrison                                |
| 8  | Rev. Brian Kennard (Com.)                          |
| 15 | Mrs. Christine Hodgson                             |
| 22 | CAROL SERVICE<br>Mrs. Jeanne Moore                 |
| 29 | NO SERVICE<br><i>Services every Sunday 6.30pm.</i> |

### St Mary's Roman Catholic Church

*Services every Sunday 8.30am.*

Contact:

Robert Constable-Maxwell 880361  
Father Owen O'Neil 462359

## GAS & OIL HEATING SERVICES

- Boiler replacements
- Servicing
- Repairs



Telephone: 01858 433333

[www.lewington-heating.co.uk](http://www.lewington-heating.co.uk)

**FREE 7 YEAR  
WARRANTY ON ALL  
NEW WORCESTER  
BOILERS!**

## 'JJ's Kiddycare'



- \* Full Day Care (0-4yrs)
  - \* Government funded Pre-school sessions for 3 & 4 year olds
  - \* Breakfast & After School clubs
  - \* Holiday Clubs during all Northants & Leicestershire school breaks
  - \* Open 51 weeks per year
- All situated at a lovely rural farm location  
Hemploe Road, Near Welford, Northants  
Tel no. 01858 575642 email. [jjswelford@tiscali.co.uk](mailto:jjswelford@tiscali.co.uk)

## DIARY DATES for DECEMBER

Sunday 1 <sup>st</sup>	Christmas Tree Festival continues... 10.00am - 5.00pm All Saints Church
Tuesday 3 <sup>rd</sup>	Parish Council meeting, 7.45pm, Committee Room, Village Hall
Wednesday 4 <sup>th</sup>	Historical Society Christmas Social Evening & Quiz, 7.30pm Church Hall
Friday 6 <sup>th</sup>	Causeway Christmas Coffee Morning, 10.00am - 11.30am Church Hall
Tuesday 10 <sup>th</sup>	Mobile library
Wednesday 11 <sup>th</sup>	Bosworth Belles Christmas Party & Quiz, 7.30pm Village Hall
Friday 13 <sup>th</sup>	Classic Film Night, 7.30pm Church Hall
Wednesday 18 <sup>th</sup>	Methodist Coffee morning, 10.00am - 12.00noon, 25 High Street
Thursday 19 <sup>th</sup>	Village Christmas Lunch, 12.30pm Kilworth Springs Golf Club
Saturday 21 <sup>st</sup>	Millennium Wood work-party, 9.30am - 12.00pm

## FORTHCOMING EVENTS

Wednesday, January 8 <sup>th</sup>	Historical Society [Note: second Wednesday of month]
Saturday, January 25 <sup>th</sup>	Millennium Wood work-party
Saturday, January 25 <sup>th</sup>	Burns Night in the Village Hall
Wednesday, January 29 <sup>th</sup>	Bosworth Belles Historic Bosworth

## LOCAL PLANNING APPLICATIONS

The following applications have been submitted to Harborough District Council:

■ 13/01592/FUL	Ms S Curtis	Erection of a single storey rear extension, 22 Welford Road
■ 13/01628/TCA	Mrs Sonia Garner-Jones	Removal of a conifer tree in a conservation area, 30 High Street
■ 13/01648/TCA	Mrs Catherine Linnell	Works to trees, 30A High Street

*Current applications may be inspected during normal working hours at the temporary Council Offices, Millers House, Roman Way, Market Harborough. Comments concerning planning applications should be addressed to the Development Control Manager:*

*Planning applications and other aspects of local government can now be viewed on-line at [www.harboroughonline.co.uk](http://www.harboroughonline.co.uk)*

### BROADBAND CORRECTION

Further to the 'Green Light for Better Broadband' article in the November *Bugle*, would you please note that the correct e-mail address for Patricia Hobson is [patrichobson45@yahoo.co.uk](mailto:patrichobson45@yahoo.co.uk). Patricia is collecting information on the routing of our telephone/broadband cables from the Bosworth exchange, since some reach properties via a green cabinet and others do not. This is important in relation to the changeover to upgraded fibre-broadband.

If you are able to help with this, please input 'ADSL checker' into your search engine, then scroll down to 'BT Wholesale: ADSL Availability Checker'. Once you have clicked on this, near the bottom of the page click again on 'ADSL Availability Checker >'. You will be asked to input your telephone number. The checker will repeat your telephone number and give you your exchange and possibly a cabinet number. Patricia would be most grateful if you would e-mail her just this information, together with your name, address and phone no.

Many thanks to those who have already contacted Patricia with this information.

### MOBILE LIBRARY

**ALTERNATE TUESDAYS (See DIARY DATES)**

#### STOPS & TIMES

School, Welford Road:	1.30pm - 2.45pm
Berridges Lane:	2.50pm - 3.30pm
Church Street:	3.35pm - 4.00pm

**Come back to your mobile library!**

**Not only lending books! Now hiring CDs & DVDs**

**Local tourist information and free mobile internet access**

\*\*\*\*\* You can now renew on-line or by phone \*\*\*\*\*

### BUGLE.....FREE ADS.

Phone Sylvia on 880902 or email: [sylvia1\\_p@hotmail.co.uk](mailto:sylvia1_p@hotmail.co.uk)

#### FOR SALE

Premier full drum-kit. VGC, suit beginner £120. Tel: 880281

#### FOR SALE

Powerbase circular saw 1200W 63mm cut, little used £20. Tel: 880824

#### FOR SALE

Esse Dragon multi-fuel iron stove. £200 ono. Tel 880401

#### FOR SALE

Carved dark wooden settle with cushioned seat £250, Carved wooden over-mantle mirror £205, French shabby chic extending dining table with drawer £250 Tel: 881105

## NORTH KILWORTH WHARF BOAT SERVICES

Station Road, North Kilworth

Lutterworth LE17 6JB

*Stockists of Calorgas, household fuels  
& red diesel Local delivery*

*Dayboat hire*

**Harry & Rachael**

**Tel: 01858 881723**

*A luxury loo for your posh do!*

## LODGE FARM LUXURY TOILET HIRE

**Please call 01858 881386**

**[www.lodgefarmluxurytoilethire.co.uk](http://www.lodgefarmluxurytoilethire.co.uk)**

