



## SORRY SIGHT

**W**e normally try to open the *Bugle* each month with a cheery and topical picture on the front page. So, it is with apologies that we present our readers this month with what may be a topical view, but what is also a truly sorrowful sight.

As most villagers will know by now, our parish church became the focus of attention for lead thieves in the early hours of Saturday, November 8<sup>th</sup>. They were thorough if nothing else, and successfully stripped everything they could off the north aisle and spirited it away. Thankfully the criminals were spotted and although there was little chance of stopping them in their endeavours or in them being caught, the fact that they were seen drew the attention of Rev. Liz and the Churchwardens to the theft. With the heavy rain that we were having at the time, had the theft gone unnoticed for longer, serious structural damage might have resulted. The temporary tarpaulin covering that you see on the picture was thankfully fitted within hours and apart from the loss of the lead itself and some slight scuffing on the parapet, little damage was done.

The thieves' return for their night's work is likely to be around £2,000 in scrap value - initial estimates indicate that the cost of repair will be at least £10,000. Lead theft has been rife recently and church insurers, who have shelled out over £30m over the past three years, have now started capping pay-outs at £5,000.

So, now the raw despair of the discovery turns to the hope that this beautiful building and the faith of church members, can be restored.

Clearly, to get the damage repaired we now need to find a significant amount of money and to this end church members have recently launched an appeal to help to fund the work. We know, and understand, that not everyone is an active church supporter, but many of us will have suffered from theft or similar criminal activity and will know the anguish that this brings. Striking at our parish church, as these thieves have done, strikes at the very core of our village and as such, we feel it is a personal attack on anyone who views Husbands Bosworth as their community.

If you are able to help or would like to discuss the matter with Rev. Liz you can call her on 880351. If you would like to donate to the appeal call Lorrie on 880281 or email: [l.forman@talk21.com](mailto:l.forman@talk21.com). Thank you.

**STOP PRESS:** *As we go to press we hear that, "Thanks to information received from a member of the public" arrests have been made relating to this recent spate of lead thefts.*

ISSUE 220

DECEMBER 2014

### THE BUGLE TEAM

#### Editor:

Melvyn Forman

Firs Fm, Welford Rd. Tel: 880281

Email: [bosworth\\_bugle@talk21.com](mailto:bosworth_bugle@talk21.com)

#### Treasurer:

Ralph Horton

18 Highcroft Tel: 880526

#### Advertising:

Sylvia Price

3 Highcroft Tel: 880902

Email: [sylvia1\\_p@hotmail.co.uk](mailto:sylvia1_p@hotmail.co.uk)

#### Contacts:

Mike Price

3 Highcroft Tel: 880902

Jo Horton

18 Highcroft. Tel: 880526

Frances Smith

10 Butt Lane Tel: 880225

Penny Mattock

9 Fernie Court Tel: 881140

Heather O'Connor

16 Fernie Court Tel: 880165

#### Postal Subscription/distribution:

Lorrie Forman Tel: 880281

Email: [l.forman@talk21.com](mailto:l.forman@talk21.com)
[www.husbandsbosworth.info](http://www.husbandsbosworth.info)

#### COPY DEADLINE

15<sup>th</sup> OF THE MONTH

PRECEDING PUBLICATION

### ADVERTISING

**S**pace constraints mean that advertising in the *Bugle* is always at a premium. We endeavour to keep a close balance between the need to generate income by selling advertising and providing sufficient editorial space to promote local issues and get our story across. Invariably this involves us reluctantly turning away advertisers, especially towards the end of our year.

The *Bugle* Advertising Year commences with the February issue and runs for 11 consecutive issues to December. Priority is given to advertisers who sign up for the full year.

If you would like to advertise in the *Bugle* in 2015, especially if you've not advertised with us before, and haven't been contacted directly by Sylvia please email: [sylvia1\\_p@hotmail.co.uk](mailto:sylvia1_p@hotmail.co.uk) for an application form as soon as possible.

## POSTBAG

*From Ann & Chris Saxton, Pewsey, Wilts.*

We love receiving the Bugle each month. Life here is good apart from Chris's health which I hope will improve after an operation on the 24<sup>th</sup>. We are now settled near our family but the door is open to any of our friends who might be passing this way. Please convey our best wishes to all our friends in Bosworth. "Ann and Chris Saxton wish a happy Christmas to all our friends and may the New Year bring you health and happiness."

*Bob & Inge Carstairs, Mowsley Road*

We were horrified, if wearily resigned, to read that the church roof had been stripped of £10,000 worth of lead. Sadly, only £5,000 of this value will be covered by insurance. The church clearly needs help from us villagers, whether active parishioners or not, to sort this out. We all benefit from the church's presence in the community, whether it is from the cohesion of seasonal events such as the upcoming Christmas Festival, or from the markers of family life such as baptisms and weddings. £5,000 shared between a good number of families in the village would ensure that repairs could be undertaken within no time. It would require only 100 families to donate £50 each for the loss to be made good. We are happy to have started the ball rolling. The treasurer has set up a special account: cheques payable to the Husbands Bosworth PCC can be sent to Lorrie Forman, Firs Farm, Welford Road LE17 6JH.

*From Ian Bartlett, North Kilworth*

Earlier this year I secured a place in the 2015 London Marathon, where I will be running for the children's charity SPARKS. To raise money for the charity I put together a local raffle; gathering almost 40 pledges from local businesses. Selling tickets around the villages I had a great response from Husbands Bosworth and met many friendly, kind and welcoming people. So, I just wanted to say a 'Big Thank' you to everyone who supported me. Overall my raffle raised £1,109.00. There were a total of five lucky winners in Husbands Bosworth, who have all received their prizes. My *Just Giving* page is at: [www.justgiving.com/Ian-Bartlett2](http://www.justgiving.com/Ian-Bartlett2) where you can learn more about SPARKS.

### POLICE FILE

**IF YOU HAVE INFORMATION ON ANY CRIMINAL ACTIVITY CALL MARKET HARBOROUGH POLICE on 101**

#### Neighbourhood Watch Co-ordinator

Marion Lewis 0116 2483871

[marion.lewis@leicestershire.pnn.police.uk](mailto:marion.lewis@leicestershire.pnn.police.uk)

NW Community Scheme No. 2123

#### Local Beat Team

Sgt. 4413 Jill Mellor

PC 1291 David Sharpe

PC 3003 Jag Sangha

PCSO 6569 Peter Willson

PCSO 6636 Ray Wells

WPCSO 6008 Laura Bolton

Voicemail Service 0116 2485675

#### Rural & Countryside Liaison Officer

PC 1448 Sam Bennett

#### CRIMESTOPPERS

FREEPHONE 0800 555111

## WATCH WORD

THE NEIGHBOURHOOD WATCH SCHEME WITHIN HUSBANDS BOSWORTH

### RECENT CRIME

- Damage and attempted theft of two vehicles, Church Lane, Welford
- Damage to property, High Street, Welford
- Theft from property, Main Street, Great Oxendon
- Burglary, Tealby Close, Gilmorton
- Burglary, High Street, Walton
- Burglary, The Nook, Walcote
- Burglary, Brook Street, Walcote
- Theft of property, Stuart Crescent, Gartree
- Criminal damage and theft of property at two premises, High Street, Naseby
- In addition to the theft of lead at our parish church, churches in Wanlip, Wigston, Welford and Cotesbach have also recently been targeted

### SID REPORT

Readings from the Speed Indicator Device

#### **Kilworth Road entry**

Period: 22.10.14 - 29.10.14

Vehicle movements: 10588

Average movements per day: 1513

Average speed: 39.86mph

*Highest recorded speed: 73mph*

#### **Kilworth Road entry**

Period: 29.10.14 - 05.11.14

Vehicle movements: 10479

Average movements per day: 1497

Average speed: 38.81mph

*Highest recorded speed: 70mph*

#### **High Street westerly**

Period: 05.11.14 - 12.11.14

Vehicle movements: 11073

Average movements per day: 1582

Average speed: 27.51mph

*Highest recorded speed: 55mph*

#### **High Street westerly**

Period: 12.11.14 - 16.11.14 (*part week*)

Vehicle movements: 5688

Average movements per day: 1415

Average speed: 27.31mph

*Highest recorded speed: 55mph*

A spate of vehicle thefts have been reported locally over the past few weeks. In most cases the vehicles have been left secure but thieves have broken into homes specifically to find the keys in order to steal the vehicles. Sophisticated immobilisers make it difficult for thieves to 'hot-wire' modern cars. They therefore need to go to greater lengths in order to have access to keys or key fobs. Don't make it easy for the thief. Keep keys out of sight; make a secret hiding place well away from an easy access point. The criminal is unlikely to want to spend much time searching if you are at home. If you are leaving your home and car unattended, especially overnight, take your keys with you or leave them with a trusted neighbour.



**BUILDING  
ROOFING  
PLASTERING**

**EXTENSIONS - ALTERATIONS - NEW BUILD**

For advice or a free quotation please contact James on:

**01858 881794**

**07795 810607**

[james@johnsonbuilding.co.uk](mailto:james@johnsonbuilding.co.uk)

## Paul Bolton School of Motoring

Professional Driving Standards Agency Instructor

New Citroen DS3 with dual controls

Flexible pick up & drop off to your requirements

Free sign up for online Theory Test study



Call Text or Email  
**01858 880115**  
**07736 457 986**  
[paul\\_bolton@hotmail.com](mailto:paul_bolton@hotmail.com)



# BOSWORTH IN FOCUS

A ROUND-UP OF LOCAL NEWS

## WELFORD ART EXHIBITION

Welford Watercolourists would like to thank everyone who visited their recent Art Exhibition and Sale of Works.

This year proceeds from sales and refreshments raised £350 for the group's chosen charity, Breakthrough Breast Cancer.

## HEALTH WARNING

A Winter Wellbeing Fair is being held in December for Harborough residents to find out how they can stay healthy this winter. The Fair, organised by Healthwatch Leicestershire will be visiting Market Harborough Methodist Church, Northampton Road, on Thursday, December 11<sup>th</sup> 10.00am to 2.00pm.

Local people will have the opportunity to get free health checks for hearing and blood pressure as well as talk to staff from Leicestershire's health and social care services such as Ambulances, Social Services, GPs and Dentist.

In addition Public Health England's national *Change4Life* campaign representatives will be there to provide information and advice on how to stay healthy and happy this winter and *Healthwatch Leicestershire*, the patient and public health watchdog, will be asking people to discuss and share their experience of local services.

## WEATHER LOG

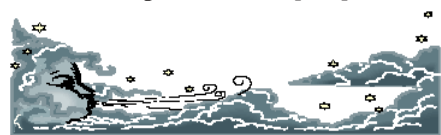
OCTOBER 2014 [2013]

Rain: 88.5mm (3.5") [129.5mm]

Wettest day: 17mm (0.7") [36mm]

Highest temp: 19°C [19°C]

Lowest Temp: 2°C [1°C]



## VILLAGE HALL QUIZ 2015

Make sure you put Saturday, February 7<sup>th</sup> in your diaries for the 2015 Village Hall Quiz! Last year's victors, 'I Am Spartacus', are returning in the role of question masters.

As usual, it is bring-your-own drinks and the venue is the Village Hall. Doors open at 7.00pm and the questions will begin at 7.30pm.

Tickets are just £10 for a team of 4 (or less) - to get your hands on one, contact: Sarah Davies on 0788 6315283 or email: sarahdavies352@icloud.com or Wendy Cochrane on 07734 422548

Start brushing up on your general knowledge and we'll look forward to seeing you there!

## RABBIT WATCH

Reader Leonie Holmes, who lives at one of the outlying farms in the parish tells us that a wild rabbit she found recently in her garden has been confirmed as suffering from myxomatosis. Having lost pet rabbits to this horrible disease in the past she would like this to be a prompt to any local rabbit keepers to make sure their pets are vaccinated.

## JAM OR JERUSALEM?

A small local charity is desperately seeking someone who can spare a few hours a year to make a small quantity of jam and marmalade. The present jam-maker is retiring after 15 years and is able to pass on all necessary equipment, technical expertise and encouragement!

If you think that you might be able to help please contact Neil or Jean Hankin on 880519, John Blay 880628 or Melvyn Forman 880281.

## THANKS...

I would like to thank all those who attended my Avon Pink Pamper Party for Break Through Breast Cancer in October. We raised £25 for the charity.

Nicky James (Avon Representative)

## LAST POST

If you wanted to send your Christmas mail by International Economy Mail (formerly Surface Mail) you're too late - you've missed the boat!

Dates for International Standard, Tracking and Signature Services are as follows:

December 3<sup>rd</sup>: Asia, Far East (inc. Japan), New Zealand

December 4<sup>th</sup>: Australia

December 5<sup>th</sup>: Africa, Caribbean, Central & South America, Middle East

December 8<sup>th</sup>: Cyprus, East Europe, Greece

December 9<sup>th</sup>: Canada, Poland

December 12<sup>th</sup>: USA

December 13<sup>th</sup>: Western Europe (excl. Greece, Poland)

UK Inland Services

December 18<sup>th</sup>: 2nd Class

December 20<sup>th</sup>: 1st Class

December 23<sup>rd</sup>: Royal Mail Special Delivery Guaranteed

## SULBY GARDENS

A big thank you to everyone who supported the National Gardens Scheme opening days at Sulby Gardens during 2014. We were very pleased to welcome almost 400 visitors and raised over £2,200 for the National Gardens Scheme charities, which include Macmillan, Marie Curie, Hospice UK, Carers Trust, The Queen's Nursing Institute, Perennial (formerly the Gardeners' Royal Benevolent Fund) and Parkinson's UK.

Sulby Gardens will be open on the following Thursday afternoons in 2015:

April 23<sup>rd</sup>, June 25<sup>th</sup>, August 20<sup>th</sup>, October 8<sup>th</sup> and November 12<sup>th</sup>

Entrance £4 per head, children free, Homemade teas available.

Sulby Gardens is happy to welcome gardening, wildlife or other special interest groups for private visits. All profits to charity.

Contact Alison Lowe, Sulby Gardens, Sulby, Northants NN6 6EZ Email: ecolowe@btinternet.com Tel: 01858 880573



Serving freshly cooked food throughout the week, prepared using locally sourced produce  
Food Served

Sunday - Tuesday  
8:30am - 5:00pm

Wednesday - Saturday  
8:30am - 9:00pm

Families welcome

Outdoor seating & free use of golf clubs for use on the Driving Range  
(t): 01858 575 082 (e): admin@kilworthsprings.co.uk  
(w): www.kilworthsprings.co.uk  
South Kilworth Road, North Kilworth, LE17 6HJ



The UK's only Tank Paintball Battle Venue  
Tank Drive Experiences \* Dads & Lads Experiences  
Military Vehicle Driving \* Military Vehicle Driving \* Children's  
Military Vehicle Party \* Woodland Paintball \* Archery Air Rifle  
Shooting

Suitable for individuals, Family Fun, Corporate Events  
Stag/Hen Parties

\*\*Gift Vouchers Available !\*\*

www.armourgeddon.co.uk Tel: 01858 880239  
Bookings by Appointment Only



## SCHOOL REPORT

**HUSBANDS BOSWORTH C. of E. PRIMARY SCHOOL** Head Teacher *Louisa Morris*

At the end of the summer term we celebrated the super academic results that our hard-working children had achieved. There is always a feeling of elation when we see our Year 6 children leave us as confident and independent learners. Although we do not put too much emphasis on our results, we are of course delighted that our performance in the National Tests puts us in the top 20% of schools nationally.

However, our school is not just about academic success and achievement; we are constantly striving to offer our children wide cultural, creative and spiritual experiences that will enable them to grow and mature into thoughtful and responsible adults with a sense of fun and adventure.

Some of the exciting activities our children have taken part in this year are: Diwali Day and Bollywood dance; multi-sports afterschool club; football and netball club; football tournaments; a visit from a soldier; ragtime dance; a first aid workshop and a very successful Year 6 residential visit to Caythorpe Court in Lincolnshire. Photos of some of the events are on our website.

Our children are also continuing to enjoy learning to play instruments. Our Year 3 and 4 children are currently learning how to play Christmas Carols on the recorder, while our Year 5 and 6 children are enthusiastically practising on their baritones and cornets and are also hand-bell ringing with Rev. Liz in All Saints Church. Our children will be joining the Lutterworth Brass Band for 'Carols in the Playground'. A group of children will also be ringing hand-bells and singing carols at the Christmas Festival at 3.15pm on Sunday, November 30<sup>th</sup>.

### FOBS NEWS

**CAROLS IN THE PLAYGROUND** Wednesday, December 10<sup>th</sup> - 7.00pm

Join us for some festive singing, followed by mince pies and mulled wine in the school playground. (Note we will be 'performing' in the Village Hall if it's raining - or snowing!)

**VIVA LAS VEGAS CASINO NIGHT** Saturday, December 13<sup>th</sup> - 8.00pm 'til late in Village Hall. Don't miss out on a glamorous night of fundraising. Numbers are limited and tickets are selling fast! Tickets £20 to include a glass of bubbly, canapés and fun money for the casino. There will be a bar and music and also an auction and raffle. Tickets available from The Catering Corner, Debbie Knight 07846418105 or Penny Arscott 881745

### BYGONE BOSWORTH

*Images from the Historical Society's Archive Collection*

The despair at the theft of lead from the church roof the day before was tempered a little by the subject of this photograph. The picture was taken from one of the Gliding Club tow planes whilst carrying out a fly-past over the War Memorial on Remembrance Sunday, marking the end of the two minute silence. The gesture, by the Club's flying instructors, was a poignant and moving acknowledgement of the role of the training activities that their predecessors, the wartime airmen, undertook at Bosworth aerodrome during World War II.



## NORTH KILWORTH WHARF BOAT SERVICES

Station Road, North Kilworth  
Lutterworth LE17 6JB

*Stockists of Calorgas, household fuels  
& red diesel Local delivery*

*Dayboat hire*

**Harry & Rachael  
Tel: 01858 881723**

### ACTIVITY GROUPS 2014

<b>All Saints Parochial Church Council</b>	Contact: Brian Smith 880225
<b>Baby-Sitting Circle</b>	Contact: Claire Scott 880295
<b>Badminton Club</b>	Contact: Ralph Horton 880526
<b>Beaver Scout Troop</b>	Contact: Stuart Dainton 881431
<b>Bosworth Tots</b>	Contact: bosworthtots@hotmail.co.uk
<b>Brownie Guides</b>	Contact: Bonny Kettell 880944
<b>Conservative Association</b>	Contact: Robert Maxwell 880361
<b>Craft Group</b>	Contact: Gail Wilmot 880413
<b>Historical Society</b>	Contact: Melvyn Forman 880281
<b>Husbands Bosworth Rainbows Group</b>	Contact: Wendy Cochrane 880076
<b>1st Kilworth Scouts/Beaver unit</b>	Contact: Stuart Dainton 881431
<b>Lutterworth African Drumming Group</b>	Contact: Ralph Horton 880526
<b>Playing Field Committee</b>	Contact: Jennifer Rogers 880401
<b>Royal British Legion</b>	Contact: Robert Maxwell 880361
<b>Tennis Club</b>	Contact: Jennifer Rogers 880401
<b>Tower Bell Ringers</b>	Contact: Geoff Armitage 880066
<b>Workers Education Association</b>	Contact: Sally Sherratt 571064

### HONEYPOT PRE-SCHOOL & CLUBS

*Honeypot is a warm, friendly and welcoming environment for children aged 18 months to 10 years. We will help to promote your child's development and learning in a fun and exciting way.*

*Please contact Denise on 07504446042 or 01858 881143 to arrange a visit, or just pop in at All Saints Church Hall, Honeypot Lane, Husbands Bosworth LE17 6LY*

*EYFS based learning*

*Before & After School Clubs*

*Fully Qualified staff*

*Free funding*

*Large indoor & outdoor facilities*

## COMPLETE CAR CARE

Accident repair specialist

Bodywork, dent, scratch and stone-chip repair

Servicing, alloy refurbishment, welding

MoT repair

Valeting, full body polish

Parking sensors, tyres & exhausts, etc. fitted

Call Ben on 01858 880404

Based at Unit 2, Pebble Hall Farm  
between Husbands Bosworth and Theddingworth

## TRADE DIRECTORY 2014

### Armourgeddon Tank Paintballing Centre

Military vehicles, paintball & outdoor activities

Contact: Tracey 01858 880239

### Croft Farm Bed & Breakfast

AA 4\*\*\*\* accommodation

Contact: Jane Smith 880679

### Lewington Heating

Boiler service & repair

Contact: 01858 433333

### Mike Price Heating Engineer

Oil-fired boiler servicing & repair

Contact: Mike Price 880902

### Paul Bolton School of Motoring

Expert driving instruction

Contact: Paul Bolton 880115

### Rob Dargue Carpentry & Building

General carpentry & woodwork

Contact: 07834 872205 or 880615

### Totally Trees Ltd.

Tree surgery and stump grinding

Contact: Jacqui Mitchell 01455 554182

### Wharf House Kennels

Kennel and cattery services

Contact: Kim McGuigan 880905

### Woodpecker Tree Surgery

All aspects of tree surgery undertaken

Contact: Chris Wright 880183

### Bosworth Tots

Stay & Play sessions for tots and their carers

Contact email: bosworthtots@hotmail.co.uk

## CHRISTMAS CRAFT FAIR

The Husbands Bosworth Craft Club would like to thank all those who supported the Craft Fair by buying, having a stall and helping in any way. It was a most successful day and we are able to send £450 to Macmillan Cancer Support.

The crafts on sale were again of a very high standard and many Christmas gifts were for sale. The refreshments were all made by Craft Group members and friends and were appreciated by the visitors. Special thanks to everyone who donated so generously to the tombola.

\*\*\*\*\*

*The Craft Group meets on the second Wednesday of each month in the Committee Room of the Village Hall.*

*If you have a craft or pastime that is reasonably portable and would welcome an opportunity to get away from the distractions of homelife for a couple of hours give Gail a call on 880413.*

## ACTIVITY GROUPS

### HISTORICAL SOCIETY

The next meeting of the Historical Society will be the Annual Quiz and Festive Social Evening, which will be on Wednesday, December 3<sup>rd</sup> at 7.30pm in the Church Hall. Members, past members and friends are cordially invited to come along and join in the fun - please bring along some food for the bring and share table! A welcoming Winter Pimms will be served at the door but please feel free to bring your own drinks for your table. This year the quiz is presented by Janice and David Staples and friends...

\*\*\*\*\*

*Meetings continue in the New Year with our opening meeting on Wednesday, January, 7<sup>th</sup> when local historian, David Price, will be letting us into some of the secrets of 'The Courtesans of Old Paris'! Often more intelligent and definitely more interesting than the nobility of the day, the French court followers have some fascinating stories to tell...*

For more information about the Historical Society please call Melvyn on 880281.

### VILLAGE HALL BOOKINGS

Mick Bromley 07442 954729

husbandsbosworthvh@gmail.com

www.husbandsbosworthvillagehall.co.uk

### CHURCH HALL BOOKINGS

Janice Staples 880668

Bob Hutchings 880131

### SPORTS PAVILION ENQUIRIES

Audrey Marlow 880316

### BOSWORTH VIEWS

The Bosworth 2015 Calendar has now been printed and will be available at the Christmas Festival, price £6.50.

The calendar shows the pictures of Husbands Bosworth taken by villagers during 2013, which were chosen by visitors to the Open Gardens event in the summer of 2014. An ideal Christmas Present!

### VILLAGE LUNCH

The next Village Lunch will be the Christmas Luncheon on Thursday, December 18<sup>th</sup> at Kilworth Springs Golf Club. Meet in the bar as usual at 12.30pm.

The meal will be full festive fare of two courses with all the trimmings, to include mince pies, coffee and mints at a special price of £10 per person.

The Christmas meal is always a popular event so please call Janice on 880668 as soon as possible to book a place if you haven't already booked. There will be a raffle in aid of LOROS.

\*\*\*\*\*

The first Village Luncheon in the New Year will be on Wednesday, January 28<sup>th</sup> at Kilworth Springs Golf Club.

### FULL STRETCH...

Pilates continues in the Village Hall on Friday nights 7.00pm to 8.00pm. Classes are open to all ages and abilities, ladies and gentlemen! Mats are provided.

Call Pat on 07939 226115 or e-mail: pmackereth@aol.com for details.

## DIANE E. HALL

### Beauty Therapist

CIBTAC ITEC CIDESCO

qualified

*\*New gel finish for longer-lasting  
nails. Offer £10 until end of  
February 2015*

Christmas Gift Vouchers  
Monu skin-care products  
now available  
Husbands Bosworth Salon

Tel: 01858 880567 or  
07732 571714

## ROB DARGUE CARPENTRY & BUILDING Ltd. Husbands Bosworth



**ALL ASPECTS OF CARPENTRY & BUILDING WORK  
EXTENSIONS & ALTERATIONS  
KITCHENS, BATHROOMS & TILING**

**Friendly, reliable service**

For a free quotation call Rob  
01858 880803 or 07834 872205  
www.robarguecarpentry.co.uk



## BEGLEY'S WINDOWS & CONSERVATORIES

*Windows & Doors*

*Conservatories & Porches*

*General Joinery*

Tel: 01858 880569  
0116 2478755

*Established 50 years*



# PARISH COUNCIL NEWS

## Report of the Parish Council Meeting held on Tuesday, November 4<sup>th</sup> 2014.

Full Council and 1 member of the public were present.

### Visitors' Questions

A member of the public brought to the attention of Council the poor condition of the quarry crossing on Butt Lane. Photographs of the state of the crossing were circulated. Chairman agreed to contact the Quarry Manager about the matter.

*Minutes of the previous meeting were circulated and agreed*

### Matters Arising from the Minutes

No word had been heard about the progress of the proposed Theddingworth solar farm. No response had been received from HDC regarding the parish adoption of the maintenance of jitties.

More information had been requested relating to the grant application towards work on the Chapel of Rest.

There had been no response from Leicestershire Transport regarding the recent late arrivals and over-crowding on the Market Harborough buses.

### Cemetery

Clerk had been in touch with The Conservation Volunteers with a view to carrying out work around the margins of the cemetery and scrub clearance behind the tennis courts but this couldn't be scheduled in until January.

### Playing Field & Play Area

Concerns had been raised regarding the safety of trees around the Playing Field and Play Area. Council agreed to seek professional advice. Council members discussed the possibility of extending the use of the Play Area by installing a piece of exercise equipment for adult use. Grants may be available under the government's *Staying Healthy* initiative.

### Allotments

No outstanding issues were raised.

### Rural Broadband

Summer 2015 was still being quoted by BT for the upgrade to be completed in Bosworth. Mrs. Hobson reminded Council that when the Superfast Broadband did arrive it would require customers to 'opt-into' the service with new contracts, which were likely to cost more for the improved speeds.

### Accounts

Accounts were presented and approved.

### Defibrillator Project

Council had now received confirmation that the BT phone box is to be deemed redundant and would be available to site the device, although an agreement to continue supplying electricity had yet to be agreed. Council agreed to purchase the defibrillator and set in motion the installation process. Council members noted that the school had raised a significant proportion of the cost and it was agreed to involve the children in an official unveiling once the device had been commissioned.

### Dog Poop Bins

Problems with emptying the new bin in Leicester Road had hopefully now been resolved. Clerk informed Council that the agreed schedule with the contractor was for all bins to be emptied fortnightly.

**The next meeting of the Parish Council will be on Tuesday, December 2<sup>nd</sup> at 7.45pm in the Committee Room of the Village Hall.**

## LOCAL OFFICERS

### Husbands Bosworth Parish Council:

#### Councillors

William Fletcher	880910 (Chairman)
Melvyn Forman	880281
Heather O'Connor	880165
Susan Fisher	880026
Stuart Brain	881615
Patricia Hobson	880070

#### Parish Clerk

Jackie Fletcher,  
13 School Lane,  
H.B. LE17 6JU Tel: 880910  
E-mail: jackiehbpc@btinternet.com

#### District Councillor

Lesley Bowles  
Email: l.bowles@harborough.gov.uk

#### County Councillor

Graham Hart  
Lilac Cottage  
Willoughby Waterleys  
Leicester LE8 6UF Tel: 01162 478600  
E-mail: graham.hart@leics.gov.uk

## PARKING ON THE FOOTWAY

The Director of Environment and Transport has recently produced a report laying down the legalities and practicalities of enforcement of parking on the footway. The report notes the difficulties that it causes, especially to the disabled, visually impaired, elderly or those with young children in buggies.

Unfortunately, despite the obvious problems caused, the legal position is unclear in the most part. The Highways Act 1835 makes it an offence to drive on a footway, except when entering or leaving a property. Vehicles that are wilfully or dangerously obstructing the footway may fall foul of the police under Highways Act 1980 or the Road Traffic Act 1988, who may issue a fixed penalty notice and a successful prosecution for obstruction could also lead to 3 penalty points on the offender's licence. However, if loading or unloading is taking place where it would be unreasonable to park otherwise the offence is unlikely to be upheld. If the carriageway adjacent to the site of the footway parking is covered by a parking restriction the offence falls into the domain of Parking Enforcement and a fixed penalty notice may be issued, as would obstructing a dropped kerb or access point. In all cases the onus is on the prosecution to prove that an obstruction has actually been caused.

## C Begley Building Ltd

Local, third generation  
house-builder

Complete interior and exterior building projects

New-build or maintenance work

Hard landscaping, driveways

& garden structures

Listed Property restoration & conservation

NHBC Registered

01604 743065 or 07748 184659

chrisbegley123@aol.com



## P.C. BUILDING SERVICES LTD

Established  
27 years



Complete building service

Specialist in new build

Quality renovations

& Extensions

**Tel/Fax 01858 881202**

**Email: pcbuildserv@btinternet.com**

Walton Grange, Bosworth Road  
Walton, Lutterworth, Leics LE17 5RW

# CHURCH NEWS

*All Saints Parish Church, Methodist Chapel & St. Mary's Roman Catholic Church*

## From the Rectory

Despite the fact that our lead has been stolen from the church roof, there is still much to give thanks for and be grateful. So now seems a good time to say thank you for some of those people and things.

Thank you to our neighbours and friends, those who watch over us and over the church, who lend their help in so many ways. If I mention one I will miss out six - you know who you are! Thank you.

Thank you for those who give their time in church and in the community on a regular basis, seeing that things get done and sustaining life.

Thank you for those who work in our community, in the school, our care homes, the many businesses, the surgery, the shop and the many other places that make a community.

Thank you for those who make us smile, who stop to speak when we meet, for those who encourage us, or comfort us when we are down.

Thank you for those we love, whether near or far, and for all those who love us.

Thank you for the beauty of the world around us, the autumn colours in the trees, the berries, the mists, for moonlit nights and starry skies.

Thank you for Jesus, for the celebration of His coming to earth, for Christmas, and for love coming to live among us.

Thank you for all who help us celebrate Christmas in the Christmas Festival, Carol Services, Crib Service, Christmas Day Service - for joy to be shared, for love given and received, and for peace to be found.

In the inner places of our hearts let us know joy, love and peace... and be thankful. Praying you will have a good Christmas. *Liz*

## WOODPECKER

### TREE SURGERY

All aspects of tree-work undertaken from dismantling large roadside trees to pruning and reshaping small garden trees.

We also offer a stump grinding service.

Professionally qualified and insured.

For free quotation and advice call

Chris on: 01858 880818

www.woodpeckertrees.com

## Parish Notices

Eileen Margaret Heeley  
of Highcroft  
Died October 27<sup>th</sup> 2014  
Aged 81 years  
*R.I.P.*

## METHODIST CHURCH

### Coffee Morning

Wednesday, December 17<sup>th</sup>  
10.00am-12.00noon.  
at the home of John & Margaret  
Scurrah, 25 High Street.  
The Coffee Morning is open to anyone,  
come along, catch up with friends, meet  
new friends, relax with coffee and cake.  
*The January Coffee Morning will be on  
Wednesday, January 21<sup>st</sup>.*

## CHURCH SERVICES

### Hexagon Benefice

- |    |   |
|----|---|
| 7  | 9.00am Communion Mowsley with Shearsby<br>9.30am Morning Prayer HB<br>11.00am Communion Thed.<br>4.00pm Family Service B'thorpe<br>6.00pm Communion Arnesby                     |
| 14 | 9.30am Communion Shearsby<br>9.30am Family Service Arnesby<br>11.00am Family Service HB<br>4.00pm Carol Service Thed.<br>6.00pm Evensong Mowsley<br>6.00pm Carol Service Brunt. |
| 16 | 7.00pm Carol Service Mowsley  |
| 21 | 10.30am Benefice Service Brunt.<br>4.00pm Arnesby joint Carol Service with Baptist Church<br>5.00pm Carol Service HB<br>6.00pm Carol Service Shearsby                           |
| 24 | 4.00pm Crib Service Arnesby<br>5.00pm Crib Service HB<br>11.15pm Midnight Com. Mowsley<br>11.15pm Midnight Com. Arnesby   |
| 25 | 10.30am Benefice All Age Com. HB  |
| 28 | 10.30am Benefice Com. Shearsby  |

Priest in Charge:  
Rev. Liz Bickley 880351

### Methodist Church

- |    |                             |
|----|-----------------------------|
| 7  | Mr. Roger Stephenson        |
| 14 | Carol Service               |
| 21 | Join with All Saints 5.00pm |
| 28 | No service                  |

Contacts:  
Rev. Brian Kennard 462889  
Senior Church Steward:  
Mr. A Lloyd Jones 880343

### St Mary's Roman Catholic Church

Services every Sunday 8.30am.

Contact:  
Robert Constable-Maxwell 880361  
Father Owen O'Neil 462359

## 'JJ's Kiddycare'



- \* Full Day Care (0-4yrs)
  - \* Government funded Pre-school sessions for 3 & 4 year olds
  - \* Breakfast & After School clubs
  - \* Holiday Clubs during all Northants & Leicestershire school breaks
  - \* Open 51 weeks per year
- All situated at a lovely rural farm location  
Hemploe Road, Near Welford, Northants  
Tel no. 01858 575642 email. [jjskiddycare@hotmail.co.uk](mailto:jjskiddycare@hotmail.co.uk)



Open for Lunch & Evening service - Christmas Main Menu  
Serving contemporary British cuisine in a modern and relaxed environment  
Bespoke balcony with panoramic views



Open

Wednesday - Saturday

12:00noon-2:30pm & 6:30pm-9:15pm

Sunday

12:00noon - 2:30pm



(t): 01858 575 555 (e): [reservations@theatticrestaurant.co.uk](mailto:reservations@theatticrestaurant.co.uk)

(w): [www.theatticrestaurant.co.uk](http://www.theatticrestaurant.co.uk)

South Kilworth Road, North Kilworth, LE17 6HJ

## DIARY DATES for DECEMBER

Tuesday 2 <sup>nd</sup>	Parish Council meeting, 7.45pm Committee Room, Village Hall
Wednesday 3 <sup>rd</sup>	Historical Society Quiz & Social Evening, 7.30pm Church Hall
Tuesday 9 <sup>th</sup>	Mobile library ( <i>Last visit for 2014 - library returns January 6<sup>th</sup> 2015</i> )
Wednesday 10 <sup>th</sup>	FOBS Carols in the Playground, 7.00pm
Friday 12 <sup>th</sup>	Causeway Festive Lunch
Saturday 13 <sup>th</sup>	Millenium Wood workparty, 9.30am - 12.00pm
Saturday 13 <sup>th</sup>	Village Hall & FOBS <i>Las Vegas</i> Casino Night, 8.00pm 'til late, Village Hall
Friday 19 <sup>th</sup>	School closes

## FORTHCOMING EVENTS

Tues. January 6 <sup>th</sup>	Parish Council meeting
Wed. January 7 <sup>th</sup>	Historical Society meeting
Wed. January 28 <sup>th</sup>	Village Lunch
Sat. February 7 <sup>th</sup>	Village Hall Quiz

## LOCAL PLANNING APPLICATIONS

The following applications have been submitted to Harborough District Council:

- 14/01463/FUL [*Mr G Willett*] Erection of fence (retrospective) (resub. 12/01504/FUL), Jasmine Cottage, 7 Butt Lane

### Recently determined applications:

- 14/01135/FUL Approved (C) [*Mr Richard King*] Erection of two storey front and side extensions and single storey side extension (Revised scheme of 13/01297/FUL), Old Barn Farm, Welford Road
- 14/01138/FUL Approved (C) [*Mr Lal Sangra*] Demolition of triple garage and erection of a pair of semi-detached dwellings (Re-submission of 14/00609/FUL), Bosworth House, Berridges Lane
- 14/01184/FUL Approved (C) [*Mr & Mrs Johnson*] Erection of two storey rear extension, 7 Berridges Lane
- 14/01290/TCA Approved [*Mr Andy Wilson*] Work to trees - remove overhanging branches, River Avon, Welford Road
- 14/01226/FUL Approved (C) [*Mrs Sara Begley*] Install outside staircase to first floor at rear of property, Bell Inn, 2 Kilworth Road
- 14/01361/TCA Approved [*Mr Charles Lister*] Felling of one eucalyptus tree, 20 Honeypot Lane
- 14/01362/TCA Approved [*Mrs Penny Arscott*] Felling of one silver birch tree, 11 School Lane

Current applications may be inspected during normal working hours at the Council Offices, The Symington Building, Adam & Eve Street, Market Harborough. Comments concerning planning applications should be addressed to the Development Control Manager. Planning applications and other aspects of local government can now be viewed on-line at [www.harboroughonline.co.uk](http://www.harboroughonline.co.uk)

## MOBILE LIBRARY

ALTERNATE TUESDAYS (See DIARY DATES above)

### STOPS & TIMES

School, Welford Road:	1.30pm - 2.45pm
Berridges Lane:	2.50pm - 3.30pm
Church Street:	3.35pm - 4.00pm

Now lending *Talking Books* on CD & tape

Local tourist information and free mobile internet access

\*\*\*\*\* You can now renew on-line or by phone \*\*\*\*\*

## BUGLE.....FREE ADS.

Phone Sylvia on 880902 or email: [sylvia1\\_p@hotmail.co.uk](mailto:sylvia1_p@hotmail.co.uk)

### FOR SALE

Brand new solid light oak double bed frame, (4'6") with headboard, side frames, slats and footboard. Still packaged. Valued at £399 in High Street Stores. Offers around £275. Small wicker 4 shelf corner unit £10 o.n.o. Single wood base futon with mattress, hardly used. £40 o.n.o. Phone 07595 710565/01858 881391 to view

## GAS & OIL HEATING SERVICES

**FREE 7 YEAR WARRANTY ON ALL NEW WORCESTER BOILERS!**

- Boiler replacements
- Servicing
- Repairs

**LEWINGTON**  
GAS • OIL • SOLAR

Telephone: 01858 433333

[www.lewington-heating.co.uk](http://www.lewington-heating.co.uk)

# Karting

Leicester Airport, Gartree Rd, Gt Stretton, Leicester. [www.stretton2000.com](http://www.stretton2000.com)

## The UK's Premier Karting experience

- 850M floodlit racing circuit
- Licensed Bar & Function room
- Slag & Hen Parties
- Corporate & Team Building Activities
- Childrens Parties
- 60 Mph, 300cc Thunder Karts
- Kart Club & Championship Races
- Junior Kart's Available
- Gift Vouchers Available
- Arrive & Drive Sessions

## Stretton Circuit 0116 259 2900

Open 7 days a week 10.00am - 9.00pm