

## FIRST RESPONSE

**O**ur eagle-eyed readers will have noticed that the redundant phone box on the Green has been taken over by our smart new defibrillator. Not only is the device smart in appearance but also smart in operation.

Current thinking is that it is counter-productive to train up an army of volunteers to use the device, giving the impression that only those who have been trained are able to use it. In an emergency situation where seconds count if the casualty is to benefit from the use of the machine, the fear is that onlookers would race around the village to find a trained operator, wasting precious time. The new thinking is that ANYONE can use the device. The process is initiated by an emergency call to 999 when the operator will direct you to the cabinet and issue the code that will release the device and start the instructions. The machine actually talks you through the simple steps and checks that you carry out the instructions correctly. If it detects that anything is wrong it will not work. Most importantly, it will not operate, even if correctly applied, if the casualty does not need resuscitating. Having said this, the Parish Council will be organising a demonstration day in the near future to introduce villagers to the device and its operation, to give folk the confidence to use it.



## BRAIN OF BOSWORTH

**T**he 2015 Battle of the Brains took place on Saturday, February 7<sup>th</sup>, when a packed Village Hall saw 19 teams arguing over ten rounds of trivia at the annual quiz.

After a hard fought contest, The Village Idiots were crowned champions - many congratulations to Wendy, Ceri, Tom and Penny, who also take the dubious honour of setting and hosting the quiz next year!

In second place were The Hammond Red Canaries, closely followed by The Cabbage Patch Kids. Commiserations go to Game for a Laugh, who were awarded the Ancient Order of the Pilchards.\* They also won the award for the team having the best time and certainly lived up to their team name!

The night was hosted by former Bosworth residents, Sarah and Richard Davies, who want to thank everyone for taking part and raising a total of £190 for the Village Hall.

*Editor's Note: \* The consumption of pilchards is reputed to improve brain capacity - look out for the Game for a Laugh team in next year's quiz!*

## ROOF-LINE

**T**he church roof saga grinds on... Since the church lead was stolen, in November, All Saints church members have been striving to carry out repairs. Emergency repairs with tarpaulins saved the day initially but recent wet weather and high winds have found the weaknesses in the temporary covering allowing water to leak through.

The building is Grade II listed, which means that English Heritage have the final say in how the repair is carried out. The upshot is that the PCC have got the option of using lead, which may encourage further theft, or re-roofing with stainless steel. At present, despite the higher initial cost, their preferred option is to use stainless steel.

So, the fund-raising carries on... Donations will obviously be gratefully welcomed. Please call Lorrie on 880281.

ISSUE 223

MARCH 2015

## THE BUGLE TEAM

### Editor:

Melvyn Forman

Firs Fm, Welford Rd. Tel: 880281

Email: bosworth\_bugle@talk21.com

### Treasurer:

Ralph Horton

18 Highcroft Tel: 880526

### Advertising:

Sylvia Price

3 Highcroft Tel: 880902

Email: sylvia1\_p@hotmail.co.uk

### Contacts:

Mike Price

3 Highcroft Tel: 880902

Jo Horton

18 Highcroft. Tel: 880526

Frances Smith

10 Butt Lane Tel: 880225

Penny Mattock

9 Fernie Court Tel: 881140

Heather O'Connor

16 Fernie Court Tel: 880165

### Postal Subscription/distribution:

Lorrie Forman Tel: 880281

Email: lforman@talk21.com

[www.husbandsbosworth.info](http://www.husbandsbosworth.info)

**COPY DEADLINE**  
**15<sup>th</sup> OF THE MONTH**  
**PRECEDING PUBLICATION**

## YOUR FESTIVAL NEEDS YOU...

**B**osworth Festival 2015 organisers are looking for help on Festival Day, which this year is on Saturday, June 27<sup>th</sup>. Especially welcome would be someone, or a group that could organise and run children's and young people's activities - someone with a fresh outlook and bright ideas to stimulate young minds!

We are also looking for helpers for marshalling and site duties on the day (uniform provided!). Prizes for the ever-popular evening raffle - unusual prizes, and offers of goods or services from local businesses, would be especially welcomed. Call Jackie on 880910 or email: jackiehbpc@btinternet.com

\*\*\*\*\*

*Since the first Bosworth Festival, back in 2007, the event has distributed over £15,000 to national and local charities and good causes.*

## POSTBAG

*From Lorrie Forman (Treasurer) All Saints Church PCC*

On behalf of All Saints PCC thank you very much to the *Bugle* team and their readers for the kind donation of £25 towards the Church Roof Fund. It is much appreciated - every donation counts towards this big repair.

*From Tony Brown, North Kilworth*

**NORTH KILWORTH BOWLS CLUB**

North Kilworth Bowls Club are looking for new members of all ages to join their friendly club. The group participates in league, local competition and friendly matches or you can just have a 'roll up' with friends. Instruction and equipment can be provided if necessary - all you require is a pair of soft-soled shoes.

The club's home is the Bowls Green, Back Lane, North Kilworth and there is a strong social element with a clubroom and licensed bar. Why not give it a try by contacting Ivor on 01858 880630 or Vic on 07949880458

### POLICE FILE

**IF YOU HAVE INFORMATION ON ANY CRIMINAL ACTIVITY CALL MARKET HARBOUROUGH POLICE on 101**

**Neighbourhood Watch Co-ordinator**

**Marion Lewis 0116 2483871**

**marion.lewis@leicestershire.pnn.police.uk**

**NW Community Scheme No. 2123**

**Lutterworth South Neighbourhood Team**

**Sgt. 4086 Jo Hodson**

**PC 1291 David Sharpe**

**PCSO 6569 Peter Willson**

**PCSO 6636 Ray Wells**

**WPCSO 6008 Laura Bolton**

**Voicemail Service 0116 2485675**

**CRIMESTOPPERS**

**FREEPHONE 0800 555111**

## WATCH WORD

*THE NEIGHBOURHOOD WATCH SCHEME WITHIN HUSBANDS BOSWORTH*

### RECENT CRIME FILE

■ Damage to vehicle and attempted theft, Westfield Crescent, Welford

■ Damage to property. West Street, Welford

■ Damage to property, Wells Close, HB

■ Theft from property, Bosworth Road, Theddingworth

■ Damage to vehicle, Main Street, Theddingworth

■ Burglary to property, Bosworth Road, Walton

■ Theft of property, Porlock Drive, Gilmorton

### SID REPORT

Readings from the Speed Indicator Device

**Welford Road (outbound)**

Period: 28.01.15 - 04.02.15

Vehicle movements: 7590

Average movements per day: 1084

Average speed: 36.48mph

Highest recorded speed: 70mph

**Welford Road (outbound)**

Period: 04.02.15 - 11.02.15

Vehicle movements: 8250

Average movements per day: 1179

Average speed: 37.16mph

Highest recorded speed: 79mph

**Kilworth Road (inbound)**

Period: 11.02.15 - 18.02.15

Vehicle movements: 12474

Average movements per day: 1782

Average speed: 36.13mph

Highest recorded speed: 73mph

### THE NEW NEIGHBOURHOOD POLICING TEAM

**Introducing Laura Bolton who is responsible for policing Lutterworth, Broughton Astley and all the surrounding villages including Husbands Bosworth.**

*"I joined Leicestershire Police as a Community Support Officer in September 2006, based at Market Harborough Police Station. In April 2013 I was transferred to the team in Lutterworth. Since the closure of Lutterworth Police Station, myself and my colleagues have secured office space in Lutterworth from which we work; retaining policing in the town.*

*If there is anything that you wish to discuss with me or would like me to pop by just to say hello and introduce myself then please don't hesitate to contact me on my details below. Alternatively, I hold a Beat Surgery once a month at Lutterworth Library and would look forward to meeting you there. PCSO 6008 Laura Bolton, Lutterworth Beat Office Tel: 101 choosing option 2 and leave me a voice message on 6008."*



**Victims of crime can now find out how their case is progressing thanks to a new online service, launched recently by police forces across the country.**

**TrackMyCrime allows people to follow the investigation easily and securely, exchange messages with their investigating officer and have their questions answered quickly.**



**DIANE E. HALL**

**Beauty Therapist**

**CIBTAC ITEC CIDESCO qualified**

**\*\*\*New moisturising and rejuvenating hand treatment\*\*\***

**Facial skin peel to brighten the skin tone.**

**Gift vouchers available for Mothers Day**

**Full range of luxury treatments available**

**Gift Vouchers & Special Offers**

**Husbands Bosworth Salon**

**Tel: 01858 880567 or 07732 571714**



**P.C. BUILDING SERVICES LTD**

Established  
27 years



Complete building service

Specialist in new build

Quality renovations

& Extensions

**Tel/Fax 01858 881202**

**Email: pcbuildserv@btinternet.com**

Walton Grange, Bosworth Road  
Walton, Lutterworth, Leics LE17 5RW

# BOSWORTH IN FOCUS

A ROUND-UP OF LOCAL NEWS

## CHURCH HALL SPRUCE UP...

A clean-up of the outside surrounds of the Church Hall will take place on Saturday, March 14<sup>th</sup>, 9.00am to 11.00am.

Everyone is welcome. Bring gloves and relevant tools. Refreshments will be served to volunteers! Contact Lorrie on 880281 for further information.

## LOCAL NEWS IN BRIEF

■ Recent speed checks carried out by Northamptonshire Police on High Street, **Welford** recorded a number of motorists exceeding the 20mph limit. The highest speed recorded was 34mph. No action has been taken this time but all motorists exceeding the limit have been issued with warning letters to draw attention to their excessive speed and remind them of their responsibility to drive within the speed limit.

■ Fans of the 80s music scene are invited to a charity music night at Kilworth Springs Golf Club, **North Kilworth** on Friday, April 24<sup>th</sup>, 7.30pm - 12.30am. There will be a live band and DJ. Tickets £15. Tickets are £15 to include a hot buffet. Contact Annabel on 07528110425

## WEATHER LOG

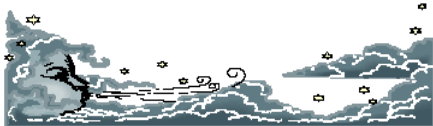
**JANUARY 2015** [2014]  
**Rain:** 45mm (1.8") [172mm]

**Wettest day:** 9mm (0.36") [19mm]

**Highest temp:** 13°C [11°C]

**Lowest Temp:** -5.5°C [-2°C]

**Snow:** 90mm (3.6") [None]



## CATTHORPE JUNCTION

Work carries on apace at the Catthorpe interchange, with much of the structural work ahead of schedule, although some weather related concrete and land work has been delayed by the cold and wet weather. The next major overnight closure is pencilled in for the weekend March 13<sup>th</sup> to 15<sup>th</sup>.

The timing of the closure is planned to keep disruption to a minimum. Major local haulage firms, especially those working out of Magna Park and DIRFT will be notified of the alternative routes and signage would be used on the A4304 to divert traffic.

## ARNESBY SCHOOL

Did you, or any family member, attend or have any connection with Arnesby Primary School? The school is celebrating its 150<sup>th</sup> year in 2015 and the governors would like to contact as many people as possible who have been involved in the school or have family members who were involved.

If you can help, please come to the school or contact via email [office@arnesby.leics.sch.uk](mailto:office@arnesby.leics.sch.uk) or tel: 0116 2478563 to add names to a register that is being compiled.

Celebrations will be taking place in November and the school would like to include as many past pupils, parents, staff and governors as possible.

## QUESTION TIME...

Fans of pub quizzes might be interested in joining in a quiz in aid of Harborough Museum funds at Market Harborough's newest pub, The Beerhouse, off St. Mary's Road (behind the Chippy!).

The quiz has been compiled by Phil Baildon, on behalf of the Friends of Harborough Museum and is on Monday, March 2<sup>nd</sup>, starting at 8.30pm. Teams of 2-6 are invited; £1 per person. Cash prizes for winners, booby for losers!

\*\*\*\*\*

## AND ANOTHER QUESTION!

Local fundraisers, The Fabulushes, will be raising funds for their Kilworth Challenge entry with a quiz at North Kilworth Sports Club on Saturday, May 9<sup>th</sup>. Teams of up to 8. Tickets £5 to include hot supper. For more information or to book a place please call Heather on 01858 880041 / 07900 183 640

## ADVANCE NOTICE OF ROADWORKS (SIBBERTOFT ROAD)

Leicestershire Highways Department have issued an advance notice that Sibbertoft Road, Husbands Bosworth will be closed to through traffic from its junction with the A5199 Welford Road to the junction with Sulby Road to enable carriageway patching and essential maintenance work to take place.

The work is expected to commence on Monday, March 16<sup>th</sup> and is anticipated that it will take a maximum of 5 days to complete. Diversions will be clearly signed and diverted traffic will use the A5199 Welford Road and Sulby Road, and vice versa.

## NEED A NEW OIL BOILER?

**Which?**  
Trusted trader

**Call the team  
you can trust.**

Telephone:  
**01858  
433333**

**LEWINGTON**  
OIL HEATING

OFTEC  
C5720

Accredited  
Installer  
36048218

[www.lewington-heating.co.uk](http://www.lewington-heating.co.uk)

## WOODPECKER TREE SURGERY

All aspects of tree-work undertaken from dismantling large roadside trees to pruning and reshaping small garden trees.

We also offer a stump grinding service.

Professionally qualified and insured.

For free quotation and advice call

Chris on: 01858 880818

[www.woodpeckertrees.com](http://www.woodpeckertrees.com)

## 'JJ's Kiddycare'

\*OUTSTANDING\* Ofsted grading

\* FREE Pre-school sessions for 2, 3 & 4 year olds

\* Full Day Care 0-5yrs

Situated on a farm site between South Kilworth and Welford

\* Breakfast and After School clubs. (4-14years)

\* Holiday Clubs during all Northants & Leics school breaks

Tel no. 01858 575642

[www.jjs-kiddycare.co.uk](http://www.jjs-kiddycare.co.uk)



# SCHOOL REPORT

HUSBANDS BOSWORTH C. of E. PRIMARY SCHOOL Head Teacher Louisa Morris

## FOBS NEWS

### ADVANCE NOTICE

Saturday, June 6<sup>th</sup> - Safari Supper

An evening where you can enjoy a 3 course meal, meet new people and raise funds for the school. Look out for more details in the coming issues of the *Bosworth Bugle*.

## BYGONE BOSWORTH

*Images from the Historical Society's Archive Collection*

A recent piece about Sulby Gardens in the *Bugle* caught the eye of villager Aneurin Owen. Aneurin came to Bosworth as a youngster in the early 1930s and recalls the pheasant and duck shoots that were held at Sulby Hall. The estate's keepers would trawl the local villages for helpers to 'beat' for the shoots. There were always plenty of takers as the day's 'pay' for boys would be half a crown (12½p), a bottle of ginger beer and a packed lunch prepared in the kitchens of the Hall. The men were paid the princely sum of ten shillings (50p), a bottle of beer and a packed lunch. As Aneurin notes, the pay was very generous considering that the weekly wage for a farm-worker at that time would be about 27 shillings (£1.35) from which 12 shillings (60p) would be deducted for board and lodging if you were living with the farmer's family!

Sulby Hall was a vast Palladian mansion designed by the renowned classical architect, Sir John Soane for the wealthy Welford banker, René Payne and built in 1793-95.

It was further extended in 1824 under the direction of Soane, and stables to house twenty hunters, a laundry and service cottages were built. The Hall was sold for reclamation in 1952 and demolished soon after.

\*\*\*\*\*

*Sulby Gardens, the former orchard and kitchen gardens to Sulby Hall, are open to the public on selected days in aid of the National Open Gardens Scheme. The first opening for 2015 will be on Thursday, April 23<sup>rd</sup>, 2.00pm to 5.30pm. Homemade teas will be available.*



## ACTIVITY GROUPS 2014

<b>All Saints Parochial Church Council</b>	Contact: Brian Smith 880225
<b>Baby-Sitting Circle</b>	Contact: Claire Scott 880295
<b>Badminton Club</b>	Contact: Ralph Horton 880526
<b>Beaver Scout Troop</b>	Contact: Stuart Dainton 881431
<b>Bosworth Tots</b>	Contact: bosworthtots@hotmail.co.uk
<b>Brownie Guides</b>	Contact: Bonny Kettell 880944
<b>Conservative Association</b>	Contact: Robert Maxwell 880361
<b>Craft Group</b>	Contact: Gail Wilmot 880413
<b>Historical Society</b>	Contact: Melvyn Forman 880281
<b>Husbands Bosworth Rainbows Group</b>	Contact: Wendy Cochrane 880076
<b>1st Kilworth Scouts/Beaver unit</b>	Contact: Stuart Dainton 881431
<b>Lutterworth African Drumming Group</b>	Contact: Ralph Horton 880526
<b>Playing Field Committee</b>	Contact: Jennifer Rogers 880401
<b>Royal British Legion</b>	Contact: Robert Maxwell 880361
<b>Tennis Club</b>	Contact: Jennifer Rogers 880401
<b>Tower Bell Ringers</b>	Contact: Geoff Armitage 880066
<b>Workers Education Association</b>	Contact: Sally Sherratt 571064

## Honeypots Pre-School & Out of School Club

Honeypot pre-school offers a warm, friendly and welcoming environment for children aged from 18 months and up. We will provide the opportunities for your child to learn through spontaneous, fun and active learning.



- ★ Large indoor & outdoor facilities
- ★ Fully qualified staff
- ★ Before and After School Club
- ★ EYFS based learning
- ★ 3years+ Free Funding



Please call Denise on 07504446042 for more information or to arrange a visit.  
Honeypot Pre-School and clubs, Church Hall, Honeypot Lane, Husbands Bosworth, LE17 6LY  
01858 881143



## Mothers Day Sunday Lunch

Sunday 15th March  
Treat your mother to a delicious  
3 Course Sunday Lunch at Kilworth Springs

3 Course Sunday Lunch with Tea & Coffee  
£21.95 per person

(t): 01858 575 082 (e): admin@kilworthsprings.co.uk  
(w): www.kilworthsprings.co.uk  
South Kilworth Road, North Kilworth, LE17 6HJ



## BUILDING ROOFING PLASTERING

EXTENSIONS - ALTERATIONS - NEW BUILD

For advice or a free quotation please contact James on:

01858 881794

07795 810607

james@johnsonbuilding.co.uk

## TRADE DIRECTORY 2015

**Armoureddon Tank Paintballing Centre**  
Military vehicles, paintball & outdoor activities  
Contact: Tracey 01858 880239

**Croft Farm Bed & Breakfast**  
AA 4\*\*\*\* accommodation  
Contact: Jane Smith 880679

**Lewington Heating**  
Boiler service & repair  
Contact: 01858 433333

**Mike Price Heating Engineer**  
Oil-fired boiler servicing & repair  
Contact: Mike Price 880902

**North Kilworth Wharf**  
Day-boat hire from £120, coal & gas delivery  
Contact: Rachael Deacon 881723

**Paul Bolton School of Motoring**  
Expert driving instruction  
Contact: Paul Bolton 880115

**Totally Trees Ltd.**  
Arboricultural Association Approved Contractor  
Contact: Jacqui Mitchell 01455 554182

**Wharf House Kennels**  
Kennel and cattery services  
Contact: Kim McGuigan 880905

**Woodpecker Tree Surgery**  
All aspects of tree surgery undertaken  
Contact: Chris Wright 880183

To advertise here call Sylvia  
on 880902  
or Email: [sylvia1\\_p@hotmail.co.uk](mailto:sylvia1_p@hotmail.co.uk)

**You wouldn't  
call the fire  
service to  
blow out a  
candle...**



### Ambulances are for emergencies.

#### These include:

- Cardiac arrest
- Stroke
- Chest pain
- Severe bleeding
- Unconscious

### Not an emergency?

#### Get advice by:

- Telephoning NHS number 111
- Contacting your GP or pharmacist
- Going to an Urgent Care Centre
- Visiting [www.nhs.uk](http://www.nhs.uk)

Think before you dial! #999 wise

twitter @EMASHSTrust



**DAY CARE for 3 months to 5 years of age**  
Warm, homely and secure atmosphere.  
The nursery is part of The Honeypot Dairy Farm; this countryside setting provides children with limitless outdoor opportunities, creating a huge range of developmental and learning experiences.  
For a Prospectus or more information please call 01858 881038  
Visit us at 10 Church Street, HB  
or email: [dairyfarmnursery@yahoo.com](mailto:dairyfarmnursery@yahoo.com)

**LIFE'S ADVENTURE STARTS HERE**

## ACTIVITY GROUPS

### HISTORICAL SOCIETY

The next meeting of the Historical Society will be on Wednesday, March 4<sup>th</sup> when Welford historian, David Vaughan will be returning to Bosworth to bring to life 'Some Characters of Old Welford'.

This promises to be an illuminating and amusing evening as David recalls growing up in Welford, the old village way of life and some of the local characters.

The meeting is at 7.30pm in the Church Hall, Honeypot Lane. A door charge of £2.50 for non-members applies.

\*\*\*\*\*

Our April meeting will be the Annual General Meeting, which will be followed by a video tour of the river Soar, *The Song of the Soar*, from its source near Copston Magna in Warwickshire to its confluence with the Trent near Ratcliff-on-Soar.

\*\*\*\*\*

*The Society's Annual Day Trip will be to Stoneywell Cottage, the National Trust's newly opened property in Charnwood, on Wednesday, June 3<sup>rd</sup>. Admission to the property is limited and we have pre-booked three morning 'slots'.*

*If you would like to join us, places will be allotted on a first-come-first-served basis and will be open to non-members and friends, subject to availability.*

*Call Frances on 880225 or email: [fj24star@me.com](mailto:fj24star@me.com) for details.*

### VILLAGE HALL BOOKINGS

Mick Bromley 07442 954729

[husbandsbosworthvh@gmail.com](mailto:husbandsbosworthvh@gmail.com)

[www.husbandsbosworthvillagehall.co.uk](http://www.husbandsbosworthvillagehall.co.uk)

### CHURCH HALL BOOKINGS

Janice Staples 880668

Bob Hutchings 880131

### SPORTS PAVILION ENQUIRIES

Audrey Marlow 880316

### VILLAGE LUNCH

The next Village Lunch will be on Thursday, March 26<sup>th</sup> at Kilworth Springs Golf Club. Diners are asked to meet in the bar at 12.30pm.

To book a place or to arrange transport to the venue please call Janice on 880668.

\*\*\*\*\*

*The management of Kilworth Springs are usually very accommodating with numbers for catering purposes but please let Janice know at least 48 hours before, if possible, if you are booked in and know that you will be unable to get to the lunch.*

### BOSWORTH TOTS

Bosworth Tots is a very popular stay-and-play session for tots (from birth to pre-school) and their parents, grandparents, carers and child minders.

The group meets on Thursday mornings from 9.45am to 11.45am (term time only) at Husbands Bosworth Village Hall. The cost is £2 for one child and then 50p for every additional child after that.

For more details email: [bosworthtots@hotmail.co.uk](mailto:bosworthtots@hotmail.co.uk)

### FULL STRETCH...

Pilates continues in the Village Hall on Friday nights 7.00pm to 8.00pm. Classes are open to all ages and abilities, ladies and gentlemen! Mats are provided.

Call Pat on 07939 226115 or e-mail: [pmackereth@aol.com](mailto:pmackereth@aol.com) for details.

### CRAFT GROUP

The Craft Group meets on the second Wednesday of each month in the Committee Room of the Village Hall.

If you have a pastime or craft that is relatively portable why not get away from the distractions of home-life and come along?

A small fee to cover hall fees and refreshments applies. Call Gail on 880413 for details.

## Paul Bolton School of Motoring

Professional Driving Standards Agency Instructor  
New Citroen DS3 with dual controls  
Flexible pick up & drop off to your requirements  
Free sign up for online Theory Test study



Call Text or Email  
01858 880115  
07736 457 986  
[paul\\_bolton@hotmail.com](mailto:paul_bolton@hotmail.com)

# PARISH COUNCIL NEWS

## Report of the Parish Council Meeting held on Tuesday, December 2<sup>nd</sup> 2014.

*Full Council was present.*

*Minutes of the previous meeting were circulated and agreed*

### Matters Arising from the Minutes

■ Concerns about the clearing of the quarry crossing on Butt Lane had been raised with the quarry manager who had agreed to ensure that the right of way was cleared at the end of each working day.

■ The adult 'ski-stepper' will be installed in the Play Area when ground conditions are suitable.

■ Arrangements had been made for the defibrillator to be fitted. Electric power to the site, to provide lighting and to supply an ambient heater for the apparatus, will be maintained by BT for 7 years. A public presentation will be arranged shortly to explain the use of the device to villagers.

■ Council noted that the Solar Farm proposal at Theddingworth had been withdrawn.

■ It was noted that the 58 bus service had been more punctual since the New Year. However, passengers had complained that many, especially those being picked up at Theddingworth and Lubenham had had to stand. Clerk had now got contact details for the County Transport Co-ordinator and would make her aware of the situation.

### Cemetery

■ Council noted that the hedge margins in the cemetery and at the back of the tennis courts had now been cleared by The Conservation Volunteers.

### Playing Field & Play Area

■ The parish strimmer and mower were being serviced at the dealer.

### Traffic Issues

■ The Speed Indicator Device had been returned to the dealer and refurbished. The download and data corruption issues had now been resolved. Two new batteries had been purchased.

■ Clerk was asked to contact Highways regarding the fouling of Welford Road by HGV traffic leaving the quarry landfill site. Other highways issues that would be reported included damaged kerbs and footway on Leicester Road opposite Safewater Farm entrance and traffic entering the garage forecourt cutting across the entrance to Cherry Tree Close.

■ Members queried why the restoration work promised for the Dag Lane to Mowsley Road footpath had not been carried out. Clerk was asked to contact the appropriate authority.

■ Mr. Fletcher had attended a meeting of the Welford Action Group to add the support of Bosworth parish to their continuing traffic action campaign relating to traffic issues along the A5199 and in Welford High Street. It was agreed that traffic issues, such as HGV and diverted A14 traffic, which affected Welford villagers, also generally affected Bosworth.

### Allotments

■ It was noted that at least one plot may be relinquished as the tenants were leaving the village.

### Accounts

■ Accounts were presented and approved. The Annual Precept for 2015-16 was presented and approved

### Defibrillator Project

■ A qualified installer had now been contracted to install the device. Clerk was to arrange the registration of the device with the emergency services. The BT stickers would be removed and the defibrillator stickers applied as soon as the weather conditions allowed.

### Dog Poop Bins

■ Clerk informed Council that it was still unclear what the bin emptying schedule was. No response had been received from HDC.

### Forthcoming Elections

■ Council agreed to distribute a flyer explaining the role of parish councillor and seeking nominations of candidates for seats on the Parish Council. The election and nomination procedure was discussed at some length.

**The next meeting of the Parish Council will be on Tuesday, March 3<sup>rd</sup> at 7.45pm in the Committee Room of the Village Hall.**

## LOCAL OFFICERS

### Husbands Bosworth Parish Council:

#### Councillors

William Fletcher	880910 (Chairman)
Melvyn Forman	880281
Heather O'Connor	880165
Susan Fisher	880026
Stuart Brain	881615
Patricia Hobson	880070

#### Parish Clerk

Jackie Fletcher,  
13 School Lane,  
H.B. LE17 6JU

Tel: 880910

E-mail: jackiehbpc@btinternet.com

#### District Councillor

Lesley Bowles  
Email: l.bowles@harborough.gov.uk

#### County Councillor

Graham Hart  
Lilac Cottage  
Willoughby Waterleys  
Leicester LE8 6UF

Tel: 01162 478600

E-mail: graham.hart@leics.gov.uk

## C Begley Building Ltd

Local, third generation  
house-builder

Complete interior and exterior building projects

New-build or maintenance work

Hard landscaping, driveways

& garden structures

Listed Property restoration & conservation

NHBC Registered

01604 743065 or 07748 184659

chrisbegley123@aol.com

## COMPLETE CAR CARE

Accident repair specialist

Bodywork, dent, scratch and stone-chip repair

Servicing, alloy refurbishment, welding

MoT repair

Valeting, full body polish

Parking sensors, tyres & exhausts, etc. fitted

Call Ben on 01858 880404

bencompletecarcare@outlook.com

# CHURCH NEWS

*All Saints Parish Church, Methodist Chapel & St. Mary's Roman Catholic Church*

## Letter from the Rectory

Lent is seen as a time to examine and re-evaluate your life and priorities, a time to think about what is good and what is not. *Examen* is the name given to a process of daily review, looking back at the end of each day to how it has gone. St Ignatius first recommended it as a spiritual exercise to help us to pray, it has five steps.

1. Become aware of God's presence
2. Review the day with gratitude
3. Pay attention to your emotions
4. Choose one feature of the day and pray from it
5. Look toward tomorrow.

It has been described by a scripture professor as 'rummaging for God - like going through a draw full of stuff, feeling around, looking for something that you are sure must be there'. As we look back on the day just finishing we are looking for God in it. It is an opportunity to recognise what is life-giving to us and what is life draining. We can then make life choices for the future based on our discoveries.

Life is a journey and every so often we need to review our direction and check what is to be our destination. Here's hoping you will find much that is life-giving and that you will keep a good Lent. Looking forward to the end of the Lent journey, which is Easter joy and resurrection. Liz

## Parish Notices

**Kathleen Varnsvery**  
of Welford Road  
Died February 11<sup>th</sup> 2015  
Aged 95 years  
*R.I.P*

## ALL SAINTS PCC AGM

All Saints Church AGM will take place on Wednesday, March 11<sup>th</sup> at 7.00pm in the Church Hall.

Everyone welcome. Prospective new church council members are invited to call Rev. Liz on 880351.

## ALL SAINTS FLOWER ROTA MARCH:

*Lent - no flowers*

Call Heather O'Connor on 880165 if you would like to join the Flower Rota

## METHODIST CHURCH

### Coffee Morning

Wednesday, March 18<sup>th</sup>  
10.00am-12.00noon.

at the home of John & Margaret Scurrah  
25 High Street.

The Coffee Morning is open to anyone, come along, catch up with friends, meet new friends, relax with coffee and cake. Visitors always welcome.

## CHURCH SERVICES

### Hexagon Benefice

- |    |  |
|----|--|
| 1  | 9.30am Communion Shearsby with Mowsley<br>9.30am Morning Prayer HB<br>11.00am Communion Thed.<br>11.00am Family Service B'thorpe<br>6.00pm Communion Arnesby |
| 8  | 9.30am Family Service Shearsby<br>9.30am Communion Arnesby<br>11.00am Communion HB<br>4.00pm Family Service B'thorpe<br>6.00pm Evensong Mowsley              |
| 15 | <b>MOTHERING SUNDAY</b><br>10.30am Benefice Service Mowsley  |
| 22 | 9.30am Communion Shearsby<br>11.00am Communion Arnesby with B'thorpe<br>5.00pm Evensong HB   |
| 29 | <b>PALM SUNDAY</b><br>10.30am Benefice service B'thorpe  |

*Short Communion every Wed. 9.15am HB*

### Churchwardens:

Brian Smith 880225  
Diana Jones 880741

### Priest in Charge:

Liz Bickley 880351

### Methodist Church

- |    |                           |
|----|---------------------------|
| 1  | Mr Michael Mays           |
| 8  | Mrs Jeanne Moore          |
| 15 | Rev Brian Kennard (comm.) |
| 22 | Rev Frances Ballantyne    |
| 29 | Mrs Christine Hodgson     |
- Services every Sunday 6.30pm.  
All Welcome*

### Contacts:

Rev. Brian Kennard 462889  
Senior Church Steward:  
Mr. A Lloyd Jones 880343

### St Mary's Roman Catholic Church

*Services every Sunday 8.30am.*

### Contact:

Robert Constable-Maxwell 880361  
Father Owen O'Neil 462359



**Mini Sparrows**

We have such fun playing and exploring in the great outdoors combined with educational, creative Montessori sessions - and all set in a home from home environment!



**Montessori Childminding NORTH KILWORTH**

Childcare for 2-4 year olds  
Fully equipped Montessori classroom  
Morning sessions or flexible, full day care  
15yrs experience • OFSTED registered  
**AMY MILES: 07891018075**



**Karting**

Leicester Airport, Gartree Rd, Gt Stretton, Leicester. www.stretton2000.com

**The UK's Premier Karting experience**

- 850M floodlit racing circuit
- Licensed Bar & Function room
- Stag & Hen Parties
- Corporate & Team Building Activities
- Childrens Parties
- 60 Mph, 300cc Thunder Karts
- Kart Club & Championship Races
- Junior Kart's Available
- Gift Vouchers Available
- Arrive & Drive Sessions

**Stretton Circuit 0116 259 2900**  
Open 7 days a week 10.00am - 9.00pm

**ROB DARGUE**  
**CARPENTRY & BUILDING Ltd.**  
**Husbands Bosworth**



**All ASPECTS OF CARPENTRY & BUILDING WORK**  
**EXTENSIONS & ALTERATIONS**  
**KITCHENS, BATHROOMS & TILING**

**Friendly, reliable service**

For a free quotation call Rob  
01858 880803 or 07834 872205  
www.robarguecarpentry.co.uk



## DIARY DATES for MARCH

Tuesday 3 <sup>rd</sup>	Mobile library
Tuesday 3 <sup>rd</sup>	Parish Council meeting, 7.45pm Village Hall
Wednesday 4 <sup>th</sup>	Historical Society - <i>Some Characters of Old Welford</i> , with David Vaughan, 7.30pm Church Hall
Wednesday 11 <sup>th</sup>	All Saints PCC AGM, 7.00pm Church Hall
Friday 13 <sup>th</sup>	Causeway Coffee Morning, 10.00am - 11.30pm Church Hall
Saturday 14 <sup>th</sup>	Church Hall clean-up morning, 9.00am - 11.00am
Sunday 15 <sup>th</sup>	MOTHERING SUNDAY
Tuesday 17 <sup>th</sup>	Mobile library
Saturday 21 <sup>st</sup>	Millennium Wood work party, 9.30am - 12.30pm
Thursday 26 <sup>th</sup>	Village Lunch, 12.30pm Kilworth Springs Golf Club
Tuesday 31 <sup>st</sup>	Mobile library

## FORTHCOMING EVENTS

Wed., April 1 <sup>st</sup>	Historical Society AGM, followed by meeting
Sunday April 5 <sup>th</sup>	EASTER SUNDAY
Wed., June 3 <sup>rd</sup>	Historical Society day trip
Saturday, June 6 <sup>th</sup>	Safari Supper
Saturday, June 27 <sup>th</sup>	Bosworth Festival 2015
Sun., October 4 <sup>th</sup>	Conker & Welly-Wanging Championships

### LOCAL PLANNING APPLICATIONS

The following applications have been submitted to **Harborough District Council**:

- 15/00064/FUL [Mr Richard King] Erect extn. to existing workshop to create office & reception area, Old Barn Farm Welford Road
- 15/00183/FUL [Mr Richard King] Alterations to existing barn & conversion to form office (revised scheme) Old Barn Farm Welford Road
- 15/00185/FUL [Messrs. Garner & Wade] Temporary siting of mobile home for agric. occupancy, Broad Lane

#### Recently determined applications:

- 14/01483/FUL Approve (C) [Ms M Delves] Creation of manège and erection of stable block and two field shelters, 9a Bell Lane
- 14/01655/FUL Approve (C) [Coventry Gliding Club Ltd] Erect maintenance building, The Soaring Centre, Sibbertoft Road
- 14/01631/FUL Approve (C) [Mrs Heard] Erection of two storey rear extension, Hill House, Welford Road

*Current applications may be inspected during normal working hours at the Council Offices, The Symington Building, Adam & Eve Street, Market Harborough. Comments concerning planning applications should be addressed to the Development Control Manager.*

*Planning applications and other aspects of local government can now be viewed on-line at [www.harboroughonline.co.uk](http://www.harboroughonline.co.uk)*

### MOBILE LIBRARY

*ALTERNATE TUESDAYS (See DIARY DATES above)*

#### STOPS & TIMES

School, Welford Road:	1.30pm - 2.45pm
Berridges Lane:	2.50pm - 3.30pm
Church Street:	3.35pm - 4.00pm

**Now lending Talking Books on CD & tape**

**Local tourist information and free mobile internet access**

\*\*\*\*\* You can now renew on-line or by phone \*\*\*\*\*

### BUGLE.....FREE ADS.

Phone Sylvia on 880902 or email: [sylvia1\\_p@hotmail.co.uk](mailto:sylvia1_p@hotmail.co.uk)

#### WANTED

Garden tools for use in the Millennium Wood maintenance. Rake, fork, loppers, etc. If you have any garden tools that you feel may be useful please call Lorrie on 880281 or Jackie 880910.

#### OFFERS

Office desk, 48" wide x 32" deep, 3 drawer pedestal. Oak finish. VGC. Offers in aid of Church funds. Tel: Melvyn on 880281



#### *Mothers Day Afternoon Tea*

*Treat your Mother to a lovely Afternoon Tea in the contemporary surroundings of the Attic Restaurant on Sunday 15th March*

**Afternoon Tea - £13.95**

**Afternoon Tea with Sparkling Wine - £16.95**

(t): 01858 575 555 (e): [reservations@theatticrestaurant.co.uk](mailto:reservations@theatticrestaurant.co.uk)

(w): [www.theatticrestaurant.co.uk](http://www.theatticrestaurant.co.uk)

South Kilworth Road, North Kilworth, LE17 6HJ



**MILITARY VEHICLE DRIVING AND TANK BATTLES AT  
ARMOURGEDDON**

*The UK's only Tank Paintball Battle Venue*

- \*Tank Drive Experiences \*Dads & Lads Experiences\*
- \*Military Vehicle Driving \*Military Vehicle Driving\*
- \*Children's Military Vehicle Party \*Woodland Paintball\*
- \*Archery\*
- \*Air Rifle Shooting\*

Suitable for individuals, Family Fun, Corporate Events  
Stag/Hen Parties

\*\*Gift Vouchers Available\*\*

[www.armouredaddon.co.uk](http://www.armouredaddon.co.uk) Tel: 01858 880239

Bookings by Appointment Only

