

## CLEANING BOSWORTH FOR THE QUEEN!

A few stalwart villagers braved the snow flurries and biting winds to, tidy up the village approaches, at the beginning of March, for the 'Clean for the Queen' national tidy-up Britain campaign.

It's a bit of a shame that out of almost a thousand villagers in Bosworth there were so few who could be bothered to help; just thirteen turned out. Perhaps everyone else felt that their Council Tax contribution should pay for litter picking?

Anyway, the hardy souls did gather an interesting variety of flotsam and jetsam from the village's grass verges, amounting to about twenty bags-full of rubbish, and including the usual collection of redundant roadsigns, sundry car parts and an ancient wheel-barrow!

At the end of the afternoon the village looked noticeably smarter and a hot cuppa, a piece of cake and a lively exchange of 'trash' stories and gossip in the Village Hall afterwards made up for enduring two hours of 'community service'!

Many thanks to everyone who helped on the pick and with the 'catering', with special thanks to John and Sue Hicks for co-ordinating the event.



### DOG CHIPS

Did you know that from April 6<sup>th</sup>, 2016 it is an offence to not have your dog microchipped? Non-compliance could lead to a fine of up to £500.

There are certain exemptions, but generally dog owners will need to:

- Have their dog microchipped and registered on an authorised database
- Ensure contact details are kept up to date
- If a dog is transferred to a new keeper, the details must be updated

If you are the keeper of a dog which has not been microchipped please contact your local vet or the Council's dog warden [dogwarden@harborough.gov.uk](mailto:dogwarden@harborough.gov.uk) for further advice. Locally, the cost is about £15.

### BOSWORTH'S CRUFTS WINNER

Clive and Marina Hale, of Knights Close, realised a dream when their Rhodesian Ridgeback, Tara, walked away with a First Rosette in the Good Citizen Class on Hound Day at Crufts in March. The couple only started showing for a bit of fun last year and couldn't believe their luck when Tara qualified for Crufts in the Puppy Class at the Blackpool Championships back in June. Now, 18 month old Tara is a Crufts Winner at their first attempt!

### QUEEN'S BIRTHDAY BEACON

Come along and share a special community event to celebrate Her Majesty the Queen's 90<sup>th</sup> birthday.

As part of a nation-wide event there will be a special lighting of the beacon on the village Playing Field on Thursday, April 21<sup>st</sup> from 6.30pm. The Pavilion facilities will be open for the evening and Bill's famous Bacon Butty Barbeque will be in full swing!

The actual beacon lighting will take place at 7.30pm, in a co-ordinated sequence with hundreds of other beacons across the length and breadth of the country.

Entry is free to all villagers! Anyone with special dietary needs can bring their own barbeque fare to cook.

ISSUE 236

APRIL 2016

### THE BUGLE TEAM

#### Editor:

Melvyn Forman  
Firs Fm, Welford Rd. Tel: 880281  
Email: [bosworth\\_bugle@talk21.com](mailto:bosworth_bugle@talk21.com)

#### Treasurer:

Ralph Horton  
18 Highcroft Tel: 880526

#### Advertising:

Sylvia Price  
3 Highcroft Tel: 880902  
Email: [sylvia1\\_p@hotmail.co.uk](mailto:sylvia1_p@hotmail.co.uk)

#### Contacts:

Mike Price  
3 Highcroft Tel: 880902

Jo Horton  
18 Highcroft. Tel: 880526

Frances Smith  
10 Butt Lane Tel: 880225

Penny Mattock  
9 Fernie Court Tel: 881140

Heather O'Connor  
16 Fernie Court Tel: 880165

#### Postal Subscription/distribution:

Lorrie Forman Tel: 880281  
Email: [l.forman@talk21.com](mailto:l.forman@talk21.com)

[www.husbandsbosworth.info](http://www.husbandsbosworth.info)

#### COPY DEADLINE

15<sup>th</sup> OF THE MONTH  
PRECEDING PUBLICATION

### 12 CHURCH LANE

In last month's *Bosworth Bugle* we published a Planning Enforcement Case (opened) notice relating to 12, Church Lane, which may have suggested that a possible breach of planning permission was being investigated by Harborough Planning Officers.

We have since learned that the case had been closed by the time the *Bugle* was published and that planning officers had already satisfied themselves that all works being carried out at 12, Church Lane complied fully with all the current planning consents on the property.

We are pleased to take this opportunity to put the matter straight and are sorry for any distress and inconvenience that may have been caused.

## POSTBAG

*From Alan Dandy, Snarestone*

It is comforting to see that the Village Hall Quiz, started by my wife Liz 35 years ago, still manages to raise funds for the Village Hall and presumably the cup now has 35 winners listed. It is also pleasing to see original competitors such as the Historical Society and Badminton Club still active. More amazing is that the Baby Sitting Circle continues, no doubt there are some interesting anecdotes around about that too, with most of the originals now being at least grandparents. Newcomers to the quiz and village activities indicate the thriving social life of Bosworth continues!

*From Janice Glithro, Church Lane*

I would like to make a comment regarding the latest *Bugle* article on Bygone Bosworth. Dave Alley is quite correct in that Hillsome House was requisitioned to accommodate a whole school, but the school was not from the East End of London but in fact from West London. I have spoken to my father (William 'Bill' Cox) who was one of these evacuees and who is now 89 years of age and living in Scotland, and he confirms that his school was Kensal Rise School, off the Harrow Road.

*From Graham Dodd, Highcroft*

I wish to applaud the Yellow Paint Caped Crusader for highlighting the dog mess and hopefully bring attention and highlight to the few mindless dog walkers who do not care. I walk my dog twice a day along Dag Lane and use the Poo Bin supplied and I can see there are numerous responsible dog owners who use the bin provided, as it fills up quickly and is emptied very regularly. So there can be no excuse in not clearing your dog mess away. Well done the Yellow Paint Caped Crusader for highlighting the problem.

### POLICE FILE

**IF YOU HAVE INFORMATION ON ANY CRIMINAL ACTIVITY CALL MARKET HARBOROUGH POLICE on 101**

**Neighbourhood Watch Co-ordinator**

**Stephen Bilbie**

**stephenbilbie@btinternet.com**

**NW Community Scheme No. 2123**

**Lutterworth South Neighbourhood Team**

**Sgt. 2241 Mark Williams**

**PCSO 6569 Peter Willson**

**PCSO 6008 Laura Bolton**

**PC 4203 Niké Diaper**

**Voicemail Service 0116 2485675**

**CRIMESTOPPERS**

**FREEPHONE 0800 555111**

## WATCH WORD

*THE NEIGHBOURHOOD WATCH SCHEME WITHIN HUSBANDS BOSWORTH*

■ Criminal damage to property, Rose Dale, North Kilworth

■ Theft from petrol filling station, North Kilworth

■ Burglary to premises, Rugby Road, South Kilworth

■ Spate of 6 reported crimes relating to thefts and attempted thefts from vehicles, Church Lane, Welford

■ Common assault at car park, Naseby Road, Welford

■ Theft from vehicle, Foxton Locks car park, Gumley Road, Foxton

### SID REPORT

Readings from the Speed Indicator Device

**High Street westerly**

Period: 17.02.16 - 24.02.16

Vehicle movements: 13134

Average movements per day: 1876

Average speed: 27.18mph

*Highest recorded speed: 50mph*

**High Street westerly**

Period: 24.02.16 - 02.03.16

Vehicle movements: 14256

Average movements per day: 2037

Average speed: 26.99mph

*Highest recorded speed: 65mph*

**Berridges Lane**

Period: 02.03.16 - 09.03.16

Vehicle movements: 7260

Average movements per day: 1037

Average speed: 32.72mph

*Highest recorded speed: 57mph*

**Berridges Lane**

Period: 09.03.16 - 16.03.16

Vehicle movements: 7128

Average movements per day: 1018

Average speed: 33.52mph

*Highest recorded speed: 59mph*

A burglary took place at an address in Market Harborough at the end of February where a safe was stolen. The safe and its contents were recovered by a Husbands Bosworth resident near to the church. Anyone who may have seen something that they consider as suspicious are asked to report this by ringing 101.

Can we remind parents and anyone dropping off and collecting children from the school, that they should park with safety in mind and not to park near to the school gates, on any 'hatched' markings or on bends.

There will be a Police Beat Surgery at Lutterworth Library on Friday, April 29<sup>th</sup>, 2.30pm to 4.30pm. If anyone has something that they would like to discuss or have a question for us, please don't hesitate to call in. If you can't make the Beat Surgery and you would like to talk to us about anything at all or if you have any information that you would like to tell us about, please ring 101 and ask to leave a message for the local Beat Team and one of us will be sure to contact you

*The Lutterworth Beat Team*

## Paul Bolton School of Motoring

Professional Driving Standards Agency Instructor

New Citroen DS3 with dual controls

Flexible pick up & drop off to your requirements

Free sign up for online Theory Test study



Call Text or Email  
01858 880115  
07736 457 986  
paul\_bolton@hotmail.com



**DAY CARE for 3 months to 5 years of age**  
*Warm, homely and secure atmosphere.*

*The nursery is part of The HoneyPot Dairy Farm; this countryside setting provides children with limitless outdoor opportunities, creating a huge range of developmental and learning experiences.*

*For a Prospectus or more information please call 01858 881038*

*Visit us at 10 Church Street, HB or email: dairyfarmdaynursery@yahoo.com*

**LIFE'S ADVENTURE STARTS HERE**



# BOSWORTH IN FOCUS

A ROUND-UP OF LOCAL NEWS

## SULBY OPEN GARDENS

We can hardly believe that it's time for the first Sulby Open Garden event. Alison Lowe will be throwing open the gates to her glorious gardens and orchard at Sulby Gardens, as part of the National Gardens Scheme, in aid of charity, on Thursday, April 28<sup>th</sup>, 2.00pm to 5.00pm. The spring showpieces at Sulby are the fritillaries and cowslips.

Entrance is £4 per person, children free. Home-made teas will also be served. Sulby Gardens home-made apple juice, made from some of the 53 varieties of apple in the orchards, will be available for sale. Stout footwear recommended.

Sulby Gardens, Sulby, Northants NN6 6EZ

### VILLAGE HALL BOOKINGS

Mick Bromley 07442 954729

husbandsbosworthvh@gmail.com

www.husbandsbosworthvillagehall.co.uk

### CHURCH HALL BOOKINGS

Janice Staples 880668

Bob Hutchings 880131

### SPORTS PAVILION ENQUIRIES

Audrey Marlow 880316

## WEATHER LOG

FEBRUARY 2016 [2015]

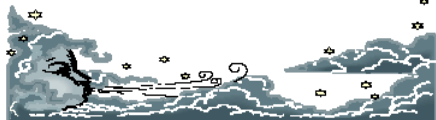
Rain: 54.25mm (2.2") [13mm]

Wettest day: 13.5mm (0.6") [13mm]

Highest temp: 12°C [11.5°C]

Lowest Temp: -4°C [-4.5°C]

Snow: Trace [0.5"]



## WILD ABOUT BOSWORTH

Stinging Nettle (*Urtica Dioica*)

For a change of pace, here's a recipe for nettle soup. No, it's not an April Fool's joke. The nettle's sting evolved as a defence against herbivorous animals, but evolution hasn't equipped them to cope with a cooking pot!

In terms of nutrition, nettles have more iron than spinach and they're rich in vitamins and minerals.

Spring is the best time to forage for the leaves that make for the best eating. I would suggest that it's preferable to harvest from remoter, unpolluted locations. Provided the whole village doesn't go out and denude the hedgerows, the plants will soon recover. By summer there'll be ample foliage to sustain beasties, such as the Spectacle, Burnished Brass and Beautiful Golden Y moths. And it will have little effect on the autumn crop of seeds that are so important for our granivorous (seed eating) birds.

### Ingredients and Method:

Half a carrier bag of nettles

1 onion

1 large potato

1 litre vegetable or chicken stock

Crème fraîche

Optional chilli or chilli flakes

1 clove of garlic

1 carrot

Olive oil

Salt & pepper

Herb of your choice

Peel and chop the onion and sauté in a little oil until it begins to caramelise. Crush the garlic and add to the pot. After a couple of minutes, add the stock, sliced potato and carrot and simmer until the potato is soft. Sort and wash the nettles, picking off the choicest leaves (Tip: wear some gloves). Add the nettle leaves, seasoning and herb of your choice, plus the chilli, if you like it hot. Simmer for five minutes then blitz with a hand blender.

Ladle into a warm bowl, top with a haute cuisine dollop of crème fraîche and serve with hot buttered toast. Bon appétit.

Mike Chanter



## GREEN WASTE SERVICE

You've probably heard by now that the green bin waste collection service in Husbands Bosworth ended with the collection on Friday, March 25<sup>th</sup>. Residents requiring the service from now on will need to subscribe and pay an annual service charge of £40 per green bin.

Those who sign up will receive a tamper-proof sticker to place on their bin in order to continue to have their green bins emptied fortnightly. The new service will operate between the months of April and November this year, and between March and November in subsequent years.

If you've not yet signed up there is still time to do so before the new service starts. You can subscribe using Harborough District Council's simple on-line form at [www.harborough.gov.uk](http://www.harborough.gov.uk), or by phone on 01858 828282.

**NOTE:** From April the bin inserts should NOT be used. All recyclable material, including newspapers and magazines, can be put directly in the blue-lidded bin.

# Karting

Leicester Airport, Gartree Rd, Gt Stretton, Leicester. [www.stretton2000.com](http://www.stretton2000.com)

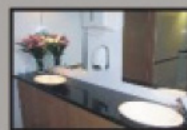
The UK's Premier Karting experience

- 850M floodlit racing circuit
- Licensed Bar & Function room
- Slag & Hen Parties
- Corporate & Team Building Activities
- Childrens Parties
- 60 Mph, 300cc Thunder Karts
- Kart Club & Championship Races
- Junior Kart's Available
- Gift Vouchers Available
- Arrive & Drive Sessions

**Stretton Circuit 0116 259 2900**

Open 7 days a week 10.00am - 9.00pm

WEDDINGS • PARTIES • CORPORATE



Lodge Farm

LUXURY TOILET HIRE

01858 882176

[www.lodgefarmluxurytoilethire.co.uk](http://www.lodgefarmluxurytoilethire.co.uk)

A Luxury Loo for your Posh Do!

# SCHOOL REPORT

HUSBANDS BOSWORTH C. of E. PRIMARY SCHOOL Head Teacher Louisa Morris

## FOBS NEWS

### Safari Supper

Friends of Bosworth School are delighted to announce that this popular village event is set for Saturday, June 18<sup>th</sup>. Now in its nineteenth year, the Safari Supper is an annual village tradition that perhaps needs some explaining for newcomers. Attendees will have a warm-up drink at the Village Hall, then a starter at one home, main course in another home and dessert in a third. Finally coffee is served back at the Village Hall to complete the evening. You will be invited to host one course, either as a couple, a single or with a friend. *Haute cuisine* is not essential. The point of the evening is to have fun not spend hours worrying over a stove, simple dishes work wonderfully.

So if you want to meet new people, enjoy a sociable walk around your village on a summer's evening and raise money for your local school, then purchase your ticket by filling in the enclosed form in the next issue of the *Bugle* and return to Colleen Wood (colleenmwood@yahoo.co.uk), or Debbie Parr (despris@sky.com) Any queries please call 01858 880582.

## BYGONE BOSWORTH

*Images from the Historical Society's Archive Collection*

This picture of a familiar corner of Bosworth is truly of its time! Imagine the palpitations in the planner's office these days if anyone should wish to emblazon their premises with so much as a poster or satellite dish in a Conservation Area... The picture serves to emphasise the burgeoning self-importance of the motor car in the years before WWII, even down to the presence of the friendly RAC patrolman at the busy crossroads. The advertising frenzy is, of course, on Mather's Garage, which stood on the Bell Lane/High Street corner, where Cheney Court now stands.

*We thank Claire Smith of Hunters Close for passing the picture to us.*



## ACTIVITY GROUPS 2016

<b>All Saints Parochial Church Council</b>	Contact: Diana Jones 880741
<b>Baby-Sitting Circle</b>	Contact: Claire Scott 880295
<b>Badminton Club</b>	Contact: Ralph Horton 880526
<b>Beaver Scout Troop</b>	Contact: Stuart Dainton 881431
<b>Bosworth Tots</b>	Contact: bosworthtots@hotmail.co.uk
<b>Brownie Guides</b>	Contact: Bonny Kettell 882148
<b>Conservative Association</b>	Contact: Robert Maxwell 880361
<b>Craft Group</b>	Contact: Gail Wilmot 880413
<b>Historical Society</b>	Contact: Melvyn Forman 880281
<b>Husbands Bosworth Rainbows Group</b>	Contact: Wendy Cochrane 880076
<b>1st Kilworth Scouts/Beaver unit</b>	Contact: Stuart Dainton 881431
<b>Lutterworth African Drumming Group</b>	Contact: Ralph Horton 880526
<b>Millennium Woodland Trust</b>	Contact: Jackie Fletcher 880910
<b>Playing Field Committee</b>	Contact: Jennifer Rogers 880401
<b>Royal British Legion</b>	Contact: Robert Maxwell 880361
<b>Tennis Club</b>	Contact: Jennifer Rogers 880401
<b>Tower Bell Ringers</b>	Contact: Geoff Armitage 880066
<b>Workers Education Association</b>	Contact: Sally Sherratt 571064

## SCHOOL HOLIDAY DATES

Please be aware that Leicestershire schools won't necessarily share the same term dates. Dates given on the Leicestershire County Council website may not be complete. Husbands Bosworth C. of E. Primary School holiday dates are as follows:

### Academic Year 2015-16

#### Summer Term

*School opens: Monday, April 11<sup>th</sup>*

*May Day Bank Holiday: Monday, May 2<sup>nd</sup>*

*Half term: Friday, May 27<sup>th</sup>*

*School opens: Monday, June 6<sup>th</sup>*

*School closes: Friday, July 15<sup>th</sup>*

For families looking for cheaper breaks; prices tend to be cheaper in the first week of our summer holidays and in the October half term break.



**P.C. BUILDING SERVICES LTD**  
Established 27 years



Complete building service  
Specialist in new build  
Quality renovations  
& Extensions

**Tel/Fax 01858 881202**  
Email: pcbuildserv@btinternet.com

Walton Grange, Bosworth Road  
Walton, Lutterworth, Leics LE17 5RW



**The Attic Restaurant**

Open for Lunch & Evening service  
Serving contemporary British cuisine in a modern  
and relaxed environment

Bespoke balcony with panoramic views  
Open Wednesday – Saturday  
12:00noon–2:30pm & 6:30pm–9:15pm  
Sunday 12:00noon – 2:30pm

(t): 01858 575 555 (e): reservations@theatticrestaurant.co.uk  
(w): www.theatticrestaurant.co.uk

South Kilworth Road, North Kilworth, LE17 6HJ



## TRADE DIRECTORY 2016

**Armourgeddon Tank Paintballing Centre**  
Military vehicles, paintball & outdoor activities  
Contact: Tracey 01858 880239

**Croft Farm Bed & Breakfast**  
AA 4\*\*\*\* accommodation  
Contact: Jane Smith 880679

**Mike Price Heating Engineer**  
Oil-fired boiler servicing & repair  
Contact: Mike Price 880902

**Totally Trees Ltd.**  
Tree surgery and stump grinding  
Contact: Jacqui Mitchell 01455 554182

**Woodpecker Tree Surgery**  
All aspects of tree surgery undertaken  
Contact: Chris Wright 880818

To advertise here call Sylvia  
on 880902  
or Email: [sylvia1\\_p@hotmail.co.uk](mailto:sylvia1_p@hotmail.co.uk)

### BOSWORTH TOTS

Bosworth Tots is a stay-and-play session for tots (from birth to pre-school) and their parents, grandparents, carers and child minders.

The group meets from 9.30am-11.30am (term time only) on Thursday mornings at Husbands Bosworth Village Hall. The cost is £2.50 for one child and then 50p for every additional child after that. For more details email: [bosworthtots@hotmail.co.uk](mailto:bosworthtots@hotmail.co.uk)

### COFFEE MORNING

There will be a Coffee Morning and Bring & Buy Sale in aid of LOROS on Saturday, April 9<sup>th</sup>, 10.00am to 12.00noon in the Church Hall, Honey Pot Lane. Please call Lorrie on 880281 for more information

### ALL SAINTS COMMUNITY HALL

Some of you may not be aware that Honey Pot Pre-School closed last summer, and decisions are now being made with regard to the future of the Hall. In view of the time that it takes to make these decisions, we have had the Hall redecorated and it is available for use any day of the week. If you are interested in using the Hall, please contact Janice Staples 880668 or Bob Hutchings 880131, who will be pleased to give you information regarding dates and cost of hire.

## ACTIVITY GROUPS

### HISTORICAL SOCIETY

The next meeting of the Historical Society will be on Wednesday, April 6<sup>th</sup> when we will be holding our Annual General Meeting. The meeting starts at 7.30pm in the Church Hall and will be followed by a talk by former County Archaeologist, Peter Liddle. The talk is entitled, 'Medieval Villages & Fields', and Pete will focus on the development of settlements, field systems and agriculture in the Medieval period.

\*\*\*\*\*

*The April meeting concludes the Society's winter programme of indoor meetings. Our May Social Evening will be a tour of the Police Air Support Unit at Sulby. More details next month.*

*On Saturday, June 4<sup>th</sup> the Society will be taking an afternoon Guided Tour of Leicester Botanic Gardens. This event will be open to friends. More details later.*

\*\*\*\*\*

As part of the national Festival of Archaeology & History, the Historical Society will be leading a Heritage Walk around the village on Wednesday, July 27<sup>th</sup>.

### CRAFT GROUP

The Craft Group meets on the second Wednesday of each month in the Committee Room of the Village Hall. For more information please contact Gail Wilmot on 880413.

### VILLAGE LUNCH

The next Village Lunch will be on Wednesday, April 27<sup>th</sup> at Kilworth Springs Golf Club. Meet as usual in the bar at 12.30pm, to dine at 1.00pm.

The Village Luncheon is a great place for those living alone, retired or new to the area to meet old and make new friends in a relaxed environment. The cost of the two-course meal is £7.50 per person, to include coffee and mints.

Call Janice on 880668 to book a place, cancel a booking or for further information.

### TENNIS IS GOOD FOR YOU...

#### Be inspired!!

Husbands Bosworth Tennis Club welcomes old and new members of all standards. Enrolment will be at the Sports Pavilion, Kilworth Road on **SATURDAY April 23<sup>rd</sup>** from 10.00am to 11.30am, with free play on the courts.

#### AND...

On **WEDNESDAY April 27<sup>th</sup>** 6.30 pm to 7.30pm, followed by the AGM.

Annual subscription will remain the same as last year:

**FAMILY £80**

**ADULT £40**

**SENIOR £30**

**JUNIOR (in full time education) £15**

We hope to be able to offer junior coaching sessions. Details will be available at both enrolment sessions.

If you are unable to attend the enrolments or require further information please contact Mike Pennington on 880455 or Jennifer Rogers on 880401.

### YOGA CLASSES

Catherine Ling Qin, a qualified yoga teacher, is launching a Yoga Class in Husbands Bosworth Village Hall. A four week taster class will commence from Monday, April 18<sup>th</sup>, 7.15pm to 8.45pm in the Village Hall. Cost is £9.50 per session.

Catherine trained as a Sun Power Yoga teacher in 2003 and further advanced her training in Forrest Yoga in 2014. She has over 15 years of experience in teaching, yoga practice and meditation and Yoga Nidra (iRest).

Catherine is also a registered osteopath, cranial osteopath and acupuncturist, and combines therapies to assist in the recovery of ailments and function throughout the body. She has been practicing in Stoneygate in Leicester for the past 10 years.

For more information please email: [qin.osteo@gmail.com](mailto:qin.osteo@gmail.com) or call 07734 853 799

## WOODPECKER TREE SURGERY

All aspects of tree-work undertaken from dismantling large roadside trees to pruning and reshaping small garden trees.

We also offer a stump grinding service.

Professionally qualified and insured.

For free quotation and advice call

Chris on: 01858 880818

[www.woodpeckertrees.com](http://www.woodpeckertrees.com)



**Open to the Public**

**Golf Course, Driving Range, Tuition**

**Bar & Restaurant - Open All Day**

**Event & Conference Facilities**

T: 01858 575 082 E: [admin@kilworthsprings.co.uk](mailto:admin@kilworthsprings.co.uk)

W: [www.kilworthsprings.co.uk](http://www.kilworthsprings.co.uk)



# PARISH COUNCIL NEWS

## PARISH COUNCIL NEWS

*Report of the Parish Council Meeting held on Tuesday, March 1<sup>st</sup> 2016.*

Four Council members, County Councillor Graham Hart and one member of the public were present.

*Apologies received from James Shelley*

### Visitors' Questions

■ Concerns about the reporting of planning matters relating to 12 Church Lane, in the *Bosworth Bugle*, were raised and discussed at length.

### Minutes of last meeting were read and approved

### Matters Arising

■ Council noted that no news had been received from Canal and Rivers Trust relating to the proposed adoption of parts of the towpath through the parish.

■ Problems of wide vehicles trying to access Green Lane were discussed. The possibility of installing width warning signs were suggested. Councillor Hart agreed to raise the issue with Highways.

■ Standing water on the approaches to the School Lane/Butt Lane bridle path were noted. Clerk to inform the Rights of Way Officer.

■ Council noted that the operators of the Pebble Hall recycling facility have cleared wood chip debris from the High Street following concerns raised at the liaison meeting.

■ Chairman outlined proposals to investigate the possibility of conducting a village referendum with the view of producing a Neighbourhood Plan as an aid to community development and planning. A series of seminars had been arranged for councillors to attend.

### Cemetery

■ Council discussed the need for a paid-for green bin in the cemetery. It was agreed to defer a decision to see how much waste was actually produced, with the option to join the scheme at a later date.

### Playing Field & Play Area

■ Council noted that the playing field and allotment hedges had been trimmed.

### Allotments

■ A Rent Review was carried out and it was agreed to hold rents for allotment plots at the same level as last year.

### Traffic Issues

■ Council considered the options for replacing the planter demolished by a car at the lower end of Berridges Lane. Clerk informed Council that the likely cost of a similar replacement was about £900. The option to replace the planter with a more visible village 'entrance' sign /barrier and bed-planted flowers was discussed. Clerk to get quotes. Cost would be covered by the vehicle's insurance.

■ In view of the accident it was agreed to site the Speed Indicator Device at the lower end of Berridges Lane so that an assessment of traffic speeds could be made.

### Broadband

■ It appeared that BT had underestimated the Broadband uptake in the village and the available fibre-enabled connections had had to be increased.

■ Mrs. Hobson reported that there appeared to be problems opening Highspeed Broadband contracts with some service suppliers. County Hall and BT were looking into the problem

### Tennis Club Lease

■ Members discussed the wording and content of the proposed lease renewal for the tennis courts area on the Playing Field. It was agreed to seek professional advice on the matter.

### HM The Queen's Birthday Celebrations

■ Council members agreed to host a bacon butty barbeque and beacon lighting on the Playing Field on April 21<sup>st</sup> as part of a nation-wide celebration of the Queen's 90<sup>th</sup> birthday.

■ It was suggested that some sort of celebration, possibly a street party, could be arranged for the Queen's official birthday in June. Subject to agreement from the school, Council agreed to present each child with a commemorative mug.

### Any Other Business

■ No word had been heard about the progress of the Welford Road/doctors' surgery development. Clerk was asked to contact the agent.

*The next meeting of the Parish Council will be on Tuesday, April 5<sup>th</sup> 2016 at 7.45pm in the Committee Room of the Village Hall.*

## LOCAL OFFICERS

### Husbands Bosworth Parish Council:

#### Councillors

William Fletcher	880910 (Chairman)
Melvyn Forman	880281
Susan Fisher	880026
Patricia Hobson	880070
James Shelley	880170

#### Parish Clerk

Jackie Fletcher,  
13 School Lane,  
H.B. LE17 6JU

Tel: 880910

E-mail: [jackiehbpc@btinternet.com](mailto:jackiehbpc@btinternet.com)

#### District Councillor

Lesley Bowles  
Email: [l.bowles@harborough.gov.uk](mailto:l.bowles@harborough.gov.uk)

#### County Councillor

Graham Hart  
Lilac Cottage  
Willoughby Waterleys  
Leicester LE8 6UF

Tel: 01162 478600

E-mail: [graham.hart@leics.gov.uk](mailto:graham.hart@leics.gov.uk)

**DIANE E. HALL**

**'THE WHITE HOUSE BEAUTY ROOM'**

**Stockist of Susan Molyneux Skincare**

**\* waxing \* pedicures \* lashes \* exfoliating treatment \***

**Vouchers & Gifts available**

**Tel: 01858 880567 or 07732 571714**

**COMPLETE CAR CARE**

Accident repair specialist

Bodywork, dent, scratch and stone-chip repair

Servicing, alloy refurbishment, welding

MoT repair

Valeting, full body polish

Parking sensors, tyres & exhausts, etc. fitted

Call Ben on 01858 880404

[bencompletecarcare@outlook.com](mailto:bencompletecarcare@outlook.com)

# CHURCH NEWS

All Saints Parish Church, Methodist Chapel & St. Mary's Roman Catholic Church

## From the Rectory

I recently read a story about prisoners being less restricted than the prison officers who guard them. Both bound by rules, spending long hours in the same place, among the same company, it's just that the guards get to go home at the end of the shift. Unlike some of my colleagues who work with the prison chaplaincy team, I have little experience of what prisons are like. But the story I read went on to liken unforgiveness to being in prison. When someone hurts us, intentionally or unintentionally, and we decide we can't forgive them, they can carry on their lives unaffected. But we will find ourselves in a cage of our own making, placing limits on how we feel, and behave. When we are able to forgive the things done to us, the person who benefits the most is ourselves, and healing follows.

I know that to forgive someone that has done something to hurt you deeply can be an extremely hard to do, particularly when it has been done deliberately.

It has to start with the decision that we want to forgive before it gradually moves down to the heart - and sometimes we have to remind ourselves many times that forgiveness is our intention before it becomes a reality. Sometimes it seems impossible. To continue not to forgive can be quite a responsibility and can be tiring, making us ill. When that happens maybe we need to tell God about it, about the hurt and about the difficulty of forgiving them and ask him to take that burden from us. We can pass the responsibility about what happens to those who hurt us on to God; a God of justice as well as mercy. Forgiving someone does not give them the right to do it again, it doesn't mean you forget what they did, but it means you can get on with living your life not dominated by the hurt. Forgiving allows you to move on. In the same way the forgiveness from God that we find in Jesus, allows us to come closer to God as our heavenly father and us his children, all we have to do is accept it - it is freely offered to all who want it. God's forgiveness of our shortcomings is a precious gift that changes lives - ours... Liz

## CELEBRATING MARRIAGE

Plans are going ahead to celebrate marriage during the 90 years of the Queen's life, with a special Celebration of Marriage at All Saints Church.

If you have a wedding dress, or anything related to weddings or the Queen's life, we would be very pleased to hear from you. We are also in need of mannequins to display the dresses. If you have one we can arrange to collect it and will make sure that it is returned safely.

There will be refreshments available each day, with a touch of nostalgia - Coronation Chicken and trifle for a start!! We would also be really pleased with donations of cakes. Church will be open on Saturday, April 23<sup>rd</sup> & Sunday, 24<sup>th</sup>, 10.00am to 5.00pm each day. Admission £2, with proceeds to the Church South Aisle Roof Fund.

The weekend will end with a Service of Thanksgiving for Marriage and Family Life. For further information please contact Di Jones 880741 or Lorrie Forman 880281.

## Parish Notices

**Adeline Pauline Palmer**

*of Brook House*

Died March 5<sup>th</sup> 2016

Age 95 years

R.I.P.

## ALL SAINTS FLOWER ROTA

**April:**

*Pat Heighton*

Call Heather O'Connor on 880165

if you would like to join the Flower Rota

## METHODIST CHURCH

### Coffee Morning

Wednesday, April 20<sup>th</sup> 10.00am-12.00noon.

at the home of John & Margaret Scurrah

25 High Street

Visitors always welcome.

## †CHURCH SERVICES †

### Hexagon Benefice

- |    |  |
|----|--|
| 3  | 9.30am Communion Mowsley with Shearsby<br>9.30am Morning Prayer HB<br>11.00am Communion Thed.<br>11.00am Family Service B'thorpe<br>6.00pm Communion Arnesby |
| 10 | 9.30am Communion Shearsby<br>9.30am Family Service Arnesby<br>11.00am Communion HB<br>4.00pm Family Service B'thorpe<br>6.00pm Evensong Mowsley              |
| 17 | 10.30am Benefice Service Mowsley   |
| 24 | 9.30am Communion Shearsby<br>11.00am Communion Arnesby with Bruntingthorpe<br>5.00pm Thanksgiving for Marriage HB  |

Short Communion every Wed. 9.15am HB

Churchwarden:

Diana Jones 880741

Rector:

Liz Bickley 880351

### Methodist Church

- |    |                           |
|----|---------------------------|
| 3  | Rev. Frances Ballantyne   |
| 10 | Rev. Brian Kennard (com.) |
| 17 | Mr. Michael Mays          |
| 24 | Mrs. Kathy Morrison       |
- Services every Sunday 6.30pm.  
All Welcome

Contacts:

Rev. Brian Kennard 462889

Senior Church Steward:

Mr. A Lloyd Jones 880343

### St Mary's Roman Catholic Church

Services every Sunday 8.30am.

Contact:

Robert Constable-Maxwell 880361

Father Owen O'Neil 462359

**ROB DARGUE**  
**CARPENTRY & BUILDING Ltd.**  
**Husbands Bosworth**

City & Guilds  
Qualified

**ALL ASPECTS OF CARPENTRY & BUILDING WORK**  
**EXTENSIONS & ALTERATIONS**  
**KITCHENS, BATHROOMS & TILING**

**Friendly, reliable service**

**For a free quotation call Rob**  
**01858 880803 or 07834 872205**  
**www.robarguecarpentry.co.uk**



**MILITARY VEHICLE DRIVING AND TANK BATTLES AT**  
**ARMOURGEDDON**

*The UK's only Tank Paintball Battle Venue*

- \*Tank Drive Experiences \* Dads & Lads Experiences\*
- \*Military Vehicle Driving \*Military Vehicle Driving\*
- \*Children's Military Vehicle Party \* Woodland Paintball\*
- \*Archery\*
- \*Air Rifle Shooting\*

Suitable for individuals, Family Fun, Corporate Events

Stag/Hen Parties

\*\*Gift Vouchers Available\*\*

www.armourgeddon.co.uk Tel: 01858 880239

Bookings by Appointment Only





## DIARY DATES for APRIL

Friday 1 <sup>st</sup>	Lutterworth Police Beat surgery, 2.30pm - 4.30pm Lutterworth Library
Tuesday 5 <sup>th</sup>	Parish Council meeting, 7.45pm Committee Room, Village Hall
Wednesday 6 <sup>th</sup>	Historical Society AGM followed by Peter Liddle talk, 'Medieval Settlements & Fields' 7.30pm CH
Friday 8 <sup>th</sup>	Causeway Coffee Morning, 10.00am - 11.30am Church Hall
Saturday 9 <sup>th</sup>	LOROS Coffee Morning and Bring & Buy Sale, 10.00am - 12.00noon, Church Hall
Friday 15 <sup>th</sup>	Mobile Library
Saturday 16 <sup>th</sup>	Millennium Wood workparty, 9.30am to 12.00noon
Wednesday 20 <sup>th</sup>	Methodist Coffee Morning, 10.00am - 12.00noon, 25 High Street
Thursday 21 <sup>st</sup>	The Queen's 90 <sup>th</sup> Birthday village beacon lighting
Saturday 23 <sup>rd</sup>	Tennis Club Enrolment, 10.00am - 11.30am Pavilion
Sat. 23 <sup>rd</sup> & Sunday 24 <sup>th</sup>	All Saints Wedding Festival, 10.00am - 5.00pm Church
Wednesday 27 <sup>th</sup>	Village Luncheon, 12.30pm Kilworth Springs Golf Club
Wednesday 27 <sup>th</sup>	Tennis Club Enrolment, 6.30pm - 7.30pm followed by AGM, Pavilion
Thursday 28 <sup>th</sup>	Sulby Open Gardens Spring Event, 2.00pm to 5.00pm, Sulby

## FORTHCOMING EVENTS

Wednesday, May 4 <sup>th</sup>	Historical Society Social Evening
Sunday, May 15 <sup>th</sup>	FOBS Treasure Hunt
Thurs., May 26 <sup>th</sup>	Village Lunch
Saturday, June 18 <sup>th</sup>	FOBS Safari Supper
Saturday, June 25 <sup>th</sup>	BOSWORTH FESTIVAL
Wednesday, July 27 <sup>th</sup>	Guided Village Heritage Walk
Sunday, August 28 <sup>th</sup>	Husbands Bosworth Horticultural and Produce Show
Saturday, November 26 <sup>th</sup>	FOBS Christmas Event

## LOCAL PLANNING NEWS

The following applications have been submitted to Harborough District Council:

### Recently determined applications:

- 15/02023/FUL [Miss Sandra Vaizgelaite] Erect single storey side extensions and two storey front and rear extensions, Woodside Farm, Theddingworth Road (Approved)
- 15/01737/VAC [Springfield Supermarkets Ltd.] Variation of conditions; approved plans, external materials, rooflights, hours, external finish and means of enclosure & removal of condition; acoustic screens of 13/00687/FUL, High Street Garage, 6 High Street (Approved)
- 15/02041/FUL [Ms M Delves] Erect single storey extn. & det. timber garage, Priory Farm, 11 Bell Lane (Approved)

Current applications may be inspected during normal working hours at the Council Offices, The Symington Building, Adam & Eve Street, Market Harborough. Comments concerning planning applications should be addressed to the Development Control Manager.

Planning applications and other aspects of local government can now be viewed on-line at [www.harboroughonline.co.uk](http://www.harboroughonline.co.uk)

## MOBILE LIBRARY

### NOTE CHANGES TO SERVICE

The Mobile Library will now be calling on the third Friday of each month.

### STOPS & TIMES

School, Welford Road:	10.35am - 11.35am
Berridges Lane:	11.40am - 12.20pm
Church Street:	12.25pm - 1.00pm

Now lending Talking Books on CD & tape

\*\*\*\*\* You can now renew on-line or by phone \*\*\*\*\*

## BUGLE.....FREE ADS.

Phone Sylvia on 880902 or email: [sylvia1\\_p@hotmail.co.uk](mailto:sylvia1_p@hotmail.co.uk)

### FOR SALE

Set of Leics. & Rutland Family History Society Journals, 2007-2012. Ideal resource for family history researchers. £5 Tel: 880225.



## Forrest Yoga

with Catherine Ling Qin

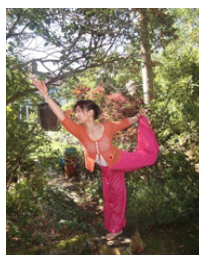
Every Monday from 18<sup>th</sup> April 2016

7.15pm - 8.45pm

Village Hall, Husbands Bosworth

4 weeks taster

All levels welcome



1½hr uniquely designed yoga practice  
Just bring yourself and experience the changes!!

Cost: £9.50

## 'JJ's Kiddycare'



\*OUTSTANDING\* Ofsted grading

\* FREE Pre-school sessions for 2, 3 & 4 year olds

\* Full Day Care 0-5yrs

Situated on a farm site between South Kilworth and Welford

\* Breakfast and After School clubs. (4-14years)

\* Holiday Clubs during all Northants & Leics school breaks

Tel no. 01858 575642

[www.jjs-kiddycare.co.uk](http://www.jjs-kiddycare.co.uk)

