

NEIGHBOURHOOD WATCH

As a designated Rural Centre, Husbands Bosworth is, as we have already seen, going to be the focus of future development. Moreover, this development, mainly as additional housing, is likely to be outside the present boundaries of the existing building line.

You only have to look at proposals already in the pipeline on Welford Road and Harborough's own identification of other potential greenfield development sites. Add in sites off Butt Lane, Mowsley Road, Leicester Road, Kilworth Road and Theddingworth Road identified in previous surveys which, with a little tweaking, could be presented as viable sites within the next, say 20 years, and you can see that our village could be on the cusp of something big!

Of course, it's not the first time that Bosworth has suddenly blossomed - only a few decades ago the village core was still cosily clustered around the church and the two main roads. Then in the 1950s along came Lammas Close, and in the 1970s, Highcroft and Hunters Close, almost doubling, in a few years, the footprint of the village.

In more recent years we have seen a lot of infill and more substantial developments such as Wells Close, Fernie Court, Cheney Court, Gilby Close, Ashacre and Knights Close. Now we are poised on the brink of more.

In reality we're unlikely to suddenly balloon to town status or swell uncontrollably into a Fleckney or Broughton Astley, but there's no doubt that Bosworth is destined for greater things.

So, do we throw ourselves in front of the bulldozers and man the barriers or seek to control for ourselves how, where and why our village develops?

Surprisingly, central government, usually the kiss of death on any common sense notion, is offering salvation through the Localism Act, which seeks to devolve local issues to local folk. So, where do we sign up? Well, for a start, the all-important paperwork that we need to wave in front of the developers and planners is a weighty tome called the Neighbourhood Plan; a village blue-print drawn up by the community, for the community and ratified by a local referendum.

The Neighbourhood Plan has wide-ranging benefits to the community beyond simple planning and development matters and can include discussion topics on service and utility provision, business development, leisure facilities and local landscape and character assessments - all things that a caring community should be considering for the future.

The first step in the process, which must be led by the Parish Council, is to decide if there is enough enthusiasm for the project and in the coming months a public meeting will be called to assess the situation. From this initial meeting, if sufficient enthusiasm is generated, a steering group will be formed to progress the project.

Husbands Bosworth is poised for a lively future - those who care should watch this space!

ISSUE 237

MAY 2016

THE BUGLE TEAM

Editors:

Melvyn Forman

Firs Fm, Welford Rd. Tel: 880281

Email: husbosworth_bugle@talk21.com

Treasurer:

Ralph Horton

18 Highcroft Tel: 880526

Advertising:

Sylvia Price

3 Highcroft Tel: 880902

Email: sylvia1_p@hotmail.co.uk

Contacts:

Mike Price

3 Highcroft Tel: 880902

Jo Horton

18 Highcroft. Tel: 880526

Frances Smith

10 Butt Lane Tel: 880225

Penny Mattock

9 Fernie Court Tel: 881140

Heather O'Connor

16 Fernie Court Tel: 880165

Postal Subscription/distribution:

Lorrie Forman Tel: 880281

Email: lforman@talk21.comwww.husbandsbosworth.info

COPY DEADLINE
15th OF THE MONTH
PRECEDING PUBLICATION

GUIDED WALK

As part of the National Festival of Archaeology & History, the Historical Society will be leading a Guided Heritage Evening Walk around the village on Wednesday, July 27th.

CANINE CHAMPS

At times, in the morning and evening, it would seem to the casual observer that Husbands Bosworth is the village of dogs, due to the number that are being exercised or on a mission to collect the newspaper. Now we know that quality dogs reside here!

Last month we noted that Clive and Marina Hale's Rhodesian Ridgeback, Tara had won glory at Crufts; and here's the picture (left) to prove it!

We now hear that Tara wasn't the only canine villager to take the honours at Crufts...

Marc and Donna Bradley-Upton, of High Street tell us that their Swedish Vallhund, Odin, also won a First this year, having been awarded a Third at last year's event. Congratulations all round!



POSTBAG

Doctors and staff are reassuring patients registered at Husbands Bosworth Surgery that services provided at the practice are safe. The Care Quality Commission recently announced the overall rating for the practice as 'inadequate', and the Practice has been placed in 'special measures'. It is appreciated that patients may be concerned, but they wish to assure them the response to the initial recommendations made after the inspection was immediate and has worked to address the issues so that patients continue to receive high quality, safe care. Providing safe, effective, responsive, well-led and caring services for patients is the priority.

Since the Practice was taken over by the Market Harborough and Bosworth Partnership in 2012, there have been significant improvements in the quality of care. The Practice is also hoping to secure planning permission for the development of a new surgery which would enable an even wider range of services to be provided at a local level. The Practice remains committed to continuously improving the standards of care, meeting the requirements of the CQC, and it looks forward to demonstrating these achievements in the future.

The Partners at the surgery said, 'We are very disappointed to be placed in special measures, but we are proud of the service we offer to our patients and we feel that we have already addressed many of the administrative issues that were raised.'

If patients have any questions or concerns relating to the quality of care or how the practice is looking to implement improvements, they can contact the Practice on: 01858 880522. Markovic, Business and Finance Manager, Market Harborough and Bosworth Partnership - Tel: 01858 439116 or email: dan.markovic@gp-c82009.nhs.uk

POLICE FILE

IF YOU HAVE INFORMATION ON ANY CRIMINAL ACTIVITY CALL MARKET HARBOROUGH POLICE on 101

Neighbourhood Watch Co-ordinator

Stephen Bilbie

stephenbilbie@btinternet.com

NW Community Scheme No. 2123

Lutterworth South Neighbourhood Team

Sgt. 2241 Mark Williams

PCSO 6569 Peter Willson

PCSO 6008 Laura Bolton

PC 4203 Niké Diaper

Voicemail Service 0116 2485675

CRIMESTOPPERS

FREEPHONE 0800 555111

WATCH WORD

THE NEIGHBOURHOOD WATCH SCHEME WITHIN HUSBANDS BOSWORTH

■ Batteries removed from a horse box in a remote rural location in the Sheepy Magna area

■ White Mercedes Sprinter van YE11 RYX stolen from secure industrial unit near Medbourne

A number of cold-calling scams have been circulating recently in the area.

Trading Standards Service advice to anyone receiving unsolicited calls or emails offering tempting deals or services is to be wary and NEVER give bank or personal details to anyone without independently confirming their bona fides. NEVER make 'snap' decisions - take time to consider the validity of the offer.

SID REPORT

Readings from the Speed Indicator Device

Kilworth Road westbound

Period: 23.03.16 - 30.03.16

Vehicle movements: 11088

Average movements per day: 1584

Average speed: 38.77mph

Highest recorded speed: 75mph

Kilworth Road westbound

Period: 30.03.16 - 06.04.16

Vehicle movements: 14190

Average movements per day: 2027

Average speed: 34.14mph

Highest recorded speed: 70mph

Kilworth Road westbound

Period: 06.04.16 - 13.04.16

Vehicle movements: 14520

Average movements per day: 2074

Average speed: 34.12mph

Highest recorded speed: 70mph

Welford Road northbound

Period: 13.04.16 - 20.04.16

Vehicle movements: 8646

Average movements per day: 1235

Average speed: 34.29mph

Highest recorded speed: 80mph

There have been 12 reported vehicle-related incidents in the past few weeks in our area, including thefts and attempted thefts.

To help protect yourself from vehicle-related crime we recommend;

- **Removing all tools from vehicles overnight**
- **Parking your vehicle in a garage if you have one**
- **Consider alarming the vehicle or fitting an internal security cage**
- **If you park on a drive, install security lights**
- **Visibly mark your machinery and tools**
- **If possible, park your vehicle close to a wall so that the doors cannot be opened**
- **Reporting any suspicious activity to us immediately on 101**

Karting

Leicester Airport, Gartree Rd, Gt Stretton, Leicestershire. www.stretton2500.com

The UK's Premier Karting experience

850M floodlit racing circuit
Licensed Bar & Function room
Slag & Hen Parties

Corporate & Team Building Activities
Children's Parties

60 Mph, 300cc Thunder Karts
Kart Club & Championship Races

Junior Kart's Available
Gift Vouchers Available

Arrive & Drive Sessions

Stretton Circuit 0116 259 2900

Open 7 days a week 10.00am - 9.00pm

P.C. BUILDING SERVICES LTD

Established
27 years

Complete building service
Specialist in new build
Quality renovations
& Extensions

Tel/Fax 01858 881202

Email: pcbuidserv@btinternet.com

Walton Grange, Bosworth Road
Walton, Lutterworth, Leics LE17 5RW

BOSWORTH IN FOCUS

A ROUND-UP OF LOCAL NEWS

WELFORD ACTION GROUP

Problems with HGVs using the A5199 and Welford High Street as the designated diversion route for A14 traffic was discussed at length at a recent meeting of Welford Action Group.

The meeting heard that Roads Minister, Andrew Jones, was expected to make a visit to the Catthorpe Interchange works and it was hoped that he would also visit Welford to see for himself the unsuitability of Welford High Street as a diversionary route. Recent accidents on the A14 and M1 and the resultant stoppages had highlighted the problems and villagers noted that these incidents weren't related to the roadworks. Similar incidents would be likely even after the much-heralded works at the junction were completed.

A traffic survey carried out in March by WAG members on High Street, Welford logged all HGVs passing through the village during a 12 hour period. Many were car transporters bound for Bruntingthorpe vehical storage facility. The managers of the site confirmed that a preferred route via Junction 20 of the M1 and Pincet Lane, North Kilworth was in place for all movements and transporter operators were asked to use this routing.

WEATHER LOG

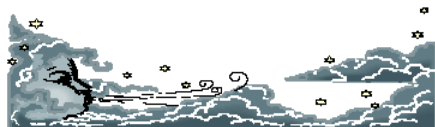
MARCH 2016 [2015]

Rain: 85.5mm (3.4") [29.75mm]

Wettest day: 23mm (0.9") [8.25mm]

Highest temp: 12°C [15.5°C]

Lowest Temp: -3°C [-2.5°C]



WILD ABOUT BOSWORTH

Jelly & Butter

Perhaps it's been a factor of the weather, but there appeared to be fewer fungi about this year. Even the common Jelly Ear Fungus (*Auricularia auricula-judae*) has been scarce.

This variety, which actually looks and feels like an ear, grows frequently, but not exclusively, on dead and living elder. It is also known as the Judas Ear Fungus; a name that stems from the belief that Judas Iscariot hanged himself from an elder tree.

As it's easily identified, and as it's listed as edible, I decided to risk a sample of this gastronomic delicacy. After frying with garlic and parsley, and serving on toast, I can attest that it tasted... - well, a little like wood flavoured jelly! So, not the epicurean treat that I'd been anticipating.

On a sunny day, late in March, a Brimstone butterfly, made an appearance in our garden. These striking sulphur-yellow insects hibernate over winter in their adult form, so they are often the first to be up and about in the spring. There is a tale, which not everyone believes, that in ancient times they were called, 'Butter-coloured fly', and it's from this we get the word butterfly. A more credible story is that naturalists originally mistook female Brimstones to be a different species, as they are smaller with lime green coloured wings and appear to be unrelated to the males.

Finally... while wondering what to do with the redundant insert from our blue recycling bin, I hit upon a Baldric-esque cunning plan. It occurred to me that it would make an excellent liner for a miniature bog garden. Details of bog garden construction, and their benefits for creatures such as newts, frogs and damselflies, can be found on the RHS website.

Mike Chanter



HORTICULTURAL & CRAFT SHOW 2016

It does not seem like it today, but spring is actually here. This prompts the usual reminder that we need your participation, support and help in nurturing what is probably the oldest, on-going horticultural show in Leicestershire. While others are failing we continue to progress.

The date to fix in your memories is Bank Holiday Sunday, August 28th and the location, the Village Hall. All profits go to village good causes. Schedules will be included in the August issue of the *Bosworth Bugle*.

A special note for newcomers to the village or the show... This village institution is open to everyone either as a competitor or a spectator. You don't need a garden - a window box, a tub or a pot will do. We have lots of baking, craft and artistic classes for adults and children; the 'Under 12' competitions have grown dramatically over the last few years - (perhaps it is the massive prizes and, especially, the silver cup!) Or, just come along to see the talent surrounding you in Husbands Bosworth.

We not only need your support as participants and viewers, we also need helpers to set up and dismantle the show, in the kitchen and to make cakes.

For any information or offers of help, please call Eleanor Murphy on 880476.



DAY CARE for 3 months to 5 years of age

Warm, homely and secure atmosphere.

The nursery is part of The HoneyPot Dairy Farm; this countryside setting provides children with limitless outdoor opportunities, creating a huge range of developmental and learning experiences.

For a Prospectus or more information please call 01858 881038

Visit us at 10 Church Street, HB or email: dairyfarmdaynursery@yahoo.com

LIFE'S ADVENTURE STARTS HERE

Paul Bolton School of Motoring

Professional Driving Standards Agency Instructor
New Citroen DS3 with dual controls
Flexible pick up & drop off to your requirements
Free sign up for online Theory Test study



Call Text or Email
01858 880115
07736 457 986
paul_bolton@hotmail.com

SCHOOL REPORT

HUSBANDS BOSWORTH C. of E. PRIMARY SCHOOL Head Teacher Louisa Morris

FOBS NEWS

FOBS will be hosting a Treasure Hunt & Fun Day on Sunday, May 15th. Collect your question sheets and start the Hunt from the Sports Pavilion between 10.30am and 11.30am. There will be a BBQ, refreshments and bar back at the Pavilion 1.00pm to 2.00pm. Tickets, £3 per person to include a BBQ hotdog, are available from Deb Knight or from The Catering Corner.

BYGONE BOSWORTH

Images from the Historical Society's Archive Collection

We've travelled a little outside Bosworth parish for this month's picture, straying into Stanford on Avon parish, to celebrate a literal mile-stone in mapping history!

You will probably recognise this structure as a triangulation (or trig) point, a base from which accurate measurements for map-making were made. You often come across them on high ground or vantage points in the open countryside.

From each trig point it was possible to see at least two others, hence triangulation, and by measuring the angles between three stations, accurate measurements would pin-point the exact position of each by distance, from which accurate mapping could be built up. This trig point is located in a field to the south of the Welford to South Kilworth road, just before you descend to the canal. It's on Downton Hill and we feature it here for the reason that it is probably the most important trig point in the country. It was from this spot, centrally in the British mainland, that the first observations were made, and from here that the positions of 11,677 other stations the length and breadth of the country, were calculated.

The lack of accurate mapping became increasingly troublesome as travel technologies progressed in the Victorian and Edwardian eras and, in 1936, Ordnance Survey commissioned Brigadier Martin Hotine to re-triangulate the whole country.

The scale of the task undertaken can be judged by the fact that the first calculation, from this station was undertaken on April 18th 1936 and the final one was carried out in Westmorland in June 1962.

The Brigadier was nothing if not a stickler for accuracy, insisting that all observations must be taken in clear weather, at night and by spot-light, so that distortion by ground heat was minimised, and just to make sure, each calculation had to be carried out 32 times! The accuracy was astounding; modern GPS proving that Hotine's calculations were less than 20 metres out in the entire 900 mile length of the country.



ACTIVITY GROUPS 2016

All Saints Parochial Church Council	Contact: Diana Jones 880741
Baby-Sitting Circle	Contact: Claire Scott 880295
Badminton Club	Contact: Ralph Horton 880526
Beaver Scout Troop	Contact: Stuart Dainton 881431
Bosworth Tots	Contact: bosworthtots@hotmail.co.uk
Brownie Guides	Contact: Bonny Kettell 882148
Conservative Association	Contact: Robert Maxwell 880361
Craft Group	Contact: Gail Wilmot 880413
Historical Society	Contact: Melvyn Forman 880281
Husbands Bosworth Rainbows Group	Contact: Wendy Cochrane 880076
1st Kilworth Scouts/Beaver unit	Contact: Stuart Dainton 881431
Lutterworth African Drumming Group	Contact: Ralph Horton 880526
Millennium Woodland Trust	Contact: Jackie Fletcher 880910
Playing Field Committee	Contact: Jennifer Rogers 880401
Royal British Legion	Contact: Robert Maxwell 880361
Tennis Club	Contact: Jennifer Rogers 880401
Tower Bell Ringers	Contact: Geoff Armitage 880066
Workers Education Association	Contact: Sally Sherratt 571064

HOUSEHOLD RECYCLING SITES

Local household recycling sites will be open from 9.00am to 7.00pm until the end of September.

OPENING DAYS

Kibworth: Mon., Tues., Wed., Sat., & Sun.

Harborough: Mon., Tues., Wed., Sat., & Sun.

Lutterworth: Mon., Thurs., Fri., Sat., & Sun.

All sites will be open on Saturday & Sunday

Most items of household waste, including electrical appliances, white goods and furniture will still be free to tip. However, DIY items, such as garden spoil, soil, rubble, concrete and builder's waste will now be chargeable, at £3 per 20 litre bag.

[Credit or debit card payment only, at the site]

ROB DARGUE
CARPENTRY & BUILDING Ltd.
Husbands Bosworth



ALL ASPECTS OF CARPENTRY & BUILDING WORK
EXTENSIONS & ALTERATIONS
KITCHENS, BATHROOMS & TILING

Friendly, reliable service

For a free quotation call Rob
01858 880803 or 07834 872205
www.rob-dargue-carpentry.co.uk



WOODPECKER TREE SURGERY

All aspects of tree-work undertaken from dismantling large roadside trees to pruning and reshaping small garden trees.

We also offer a stump grinding service.

Professionally qualified and insured.

For free quotation and advice call

Chris on: 01858 880818

www.woodpeckertrees.com

TRADE DIRECTORY 2016

Armourgeddon Tank Paintballing Centre
Military vehicles, paintball & outdoor activities
Contact: Tracey 01858 880239
Croft Farm Bed & Breakfast
AA 4**** accommodation
Contact: Jane Smith 880679
Mike Price Heating Engineer
Oil-fired boiler servicing & repair
Contact: Mike Price 880902
Totally Trees Ltd.
Tree surgery and stump grinding
Contact: Jacqui Mitchell 01455 554182
Woodpecker Tree Surgery
All aspects of tree surgery undertaken
Contact: Chris Wright 880818

BOSWORTH TOTS

Bosworth Tots is a stay-and-play session for tots (from birth to pre-school) and their parents, grandparents, carers and child minders.

The group meets from 9.30am -11.30am (term time only) on Thursday mornings at Husbands Bosworth Village Hall. The cost is £2.50 for one child and then 50p for every additional child after that. For more details email: bosworthtots@hotmail.co.uk

HAND AND WRIST CLINIC OPENS

A new private clinic for the treatment of injury or conditions affecting the hand, wrist and elbow has opened in Market Harborough.

Rachel McQuaid (BSC) is a qualified Occupational Therapist specialising in hand therapy with extensive experience in other clinical settings including trauma and orthopaedics, plastic surgery and rheumatology.

Her clinic at the Two Shires Surgery provides a quiet and comfortable environment with modern facilities. As well as traditional therapies such as exercise, massage, joint mobilisations and ultrasound therapy, Rachel also offers paraffin wax treatments, a custom-made splinting service and specialist advice on the management of scars.

For more information visit: www.thehandandwristclinic.co.uk or call Rachel on 07894 080 414.

ACTIVITY GROUPS

HISTORICAL SOCIETY

The next meeting of the Historical Society is the annual Social Evening.

This year we have been invited to the East Midlands Air Support Unit base at Sulby, on Wednesday, May 4th to see the work of the police helicopter team. The team has been supporting the police forces of Northamptonshire, Warwickshire and Leicestershire from the site since 1994. Meet on The Green at 7.00pm.

Frances Smith is taking names for our Annual Day Trip, this year to the University of Leicester Botanic Gardens on Saturday, June 6th. If you haven't already registered an interest please contact Frances on email or call on 880225. Friends are welcome to join us.

DIARY DATE: The Annual Garden Party will be on Sunday, July 10th at the home of Brian and Frances Smith

CRAFT GROUP

Meets on the second Wednesday of each month in the Committee Room of the Village Hall.

If you have a past-time or hobby that is reasonably portable and would welcome an opportunity to meet like-minded 'crafty' folk then why not come along once a month to the Craft Group? New members assured a warm welcome!

Call Gail on 880413 for more information.

VILLAGE HALL BOOKINGS

Mick Bromley 07442 954729

husbandsbosworthvh@gmail.com

www.husbandsbosworthvillagehall.co.uk

CHURCH HALL BOOKINGS

Janice Staples 880668

Bob Hutchings 880131

SPORTS PAVILION ENQUIRIES

Audrey Marlow 880316

VILLAGE LUNCH

The next Village Lunch will be on Thursday, May 26th at Kilworth Springs Golf Club. Meet in the bar at 12.30pm.

Please call Janice on 880668 to book a place or to cancel.

TENNIS CLUB

The season has started and enrolment has taken place but there is still time to join the club. We have a coach for the juniors on Thursdays and there may still be a few spaces by the time you read this. For further information on coaching contact Bonnie Kettell on 882148. Tennis Club information from Mike Pennington on 880455 or Jennifer Rogers on 880401.

VILLAGE HALL

The Turville Memorial Hall Annual General meeting will take place on Tuesday, May 10th at 8.15pm in the Hall. All welcome

BOSWORTH FESTIVAL

Bookings for stall-space for Bosworth Festival 2016 are now being taken. Stall space is still only £5 per 3m x 3m space - big enough for a gazebo! Registered charities and local not-for-profit groups FREE.

Follow *Bosworth Festival* on Facebook for all the latest news and views, some very nice pics of past Festivals and some new things lined up for this year!

For a print-off booking form go to the village website: www.husbandsbosworth.info

For further information please email Jackie Fletcher at jackiehbpc@btinternet.com or phone 880910.

For exhibit entry enquiries call Scott on 07761040218.

LOROS COFFEE MORNING

The coffee morning, in aid of LOROS, the local hospice, held in the Church Hall at the beginning of April, raised a fantastic £240. Thank you to everyone who came and supported, or donated or helped in any way.



The UK's only Tank Paintball Battle Venue

- *Tank Drive Experiences * Dads & Lads Experiences*
- *Military Vehicle Driving *Military Vehicle Driving*
- *Children's Military Vehicle Party * Woodland Paintball*
- *Archery*
- *Air Rifle Shooting*

Suitable for individuals, Family Fun, Corporate Events
Stag/Hen Parties

Gift Vouchers Available

www.armourgeddon.co.uk Tel: 01858 880239

Bookings by Appointment Only



*Open for Lunch & Evening service
Serving contemporary British cuisine in a modern
and relaxed environment*

Bespoke balcony with panoramic views

Open Wednesday - Saturday

12:00noon-2:30pm & 6:30pm-9:15pm

Sunday 12:00noon - 2:30pm

(t): 01858 575 555 (e): reservations@theatticrestaurant.co.uk

(w): www.theatticrestaurant.co.uk

South Kilworth Road, North Kilworth, LE17 6HJ



PARISH COUNCIL NEWS

Report of the Parish Council Meeting held on Tuesday, April 5th 2016.

Four Council members, County Councillor Graham Hart and PCSO Pete Willson were present.

Apologies received from Susan Fisher

Visitors' Questions

■PCSO Willson discussed local policing issues and reminded the community to be aware of a fresh spate of church lead thefts locally. Villagers are urged to report any suspicious activity around the church or public buildings.

Minutes of last meeting were read and approved

Matters Arising

■Council agreed a quotation for infilling the south door of the Chapel of Rest. External finish would be wood to resemble the existing doors.

■The terms of the lease for the tennis courts site had been agreed with Tennis Club members and a draft had been submitted to PC solicitors.

Cemetery

■It was noted that the Martin family bench in the cemetery extension required treating with wood preserver. Council authorised this work to be carried out as soon as possible.

Playing Field & Play Area

■Members noted that a tree had fallen across the road from the pavilion car park, blocking Kilworth Road for a while. A villager had quickly removed the tree and tidied the site.

■Council noted that a length of fencing alongside the car parking area had also been blown down, presumably at the same time. Clerk was asked to obtain quotations for replacing the fence.

Allotments

■Clerk informed Council that only one plot was un-taken.

Traffic Issues

■A report of the recent Welford Action Group meeting was circulated to members. It was noted that Welford had now got a Speed Indicator Device, currently deployed on Northampton Road.

■Mr. Forman informed Council that service and sales support for our SID unit had been withdrawn by the German manufacturers. Contact had been made with Leicestershire County Council, who had promoted the purchase of our device, to see if alternative arrangements had been made.

Broadband

■Mrs. Hobson reported that some access issues concerning Hi-Speed Broadband connections had been experienced with some service providers, although BT customers had had less problems. Those experiencing problems had been advised to re-apply for the service.

Correspondence

■A letter from a villager sought Council's views on opening up the Playing Field to dogs. Council would consult with users but favoured an enclosed dog walking area around the periphery of the field.

HM The Queen's Birthday Celebrations

■Council members discussed preparations for the barbeque and beacon lighting on the Playing Field on April 21st as part of a nation-wide celebration of the Queen's 90th birthday.

■Clerk informed Council that the school had approved the presentation of a commemorative mug to each child at the school and the mugs had been ordered..

Any Other Business

■Two parish councillors and the Clerk had attended a Neighbourhood Planning Forum. The subject was complex and two further meetings had been arranged. A general discussion on the benefits of the Plan followed.

The next meeting of the Parish Council will be the Annual General Meeting and Election of Officers on Tuesday, May 3rd 2016 at 7.45pm in the Committee Room of the Village Hall. The AGM will be followed by a Parish Council Meeting.

LOCAL OFFICERS

Husbands Bosworth Parish Council:

Councillors

William Fletcher	880910 (Chairman)
Melvyn Forman	880281
Susan Fisher	880026
Patricia Hobson	880070
James Shelley	880170

Parish Clerk

Jackie Fletcher,
13 School Lane,
H.B. LE17 6JU

Tel: 880910

E-mail: jackiehbpc@btinternet.com

District Councillor

Lesley Bowles
Email: l.bowles@harborough.gov.uk

County Councillor

Graham Hart
Lilac Cottage
Willoughby Waterleys
Leicester LE8 6UF

Tel: 01162 478600

E-mail: graham.hart@leics.gov.uk

PEBBLE HALL CONSULTATION

Environment Agency

Please note that a further consultation period for the proposed gasification plant at Pebble Hall Farm has now opened to enable interested parties to view the draft permit and decision document for the site.

The Environment Agency consults the public on certain applications for waste operations. In some cases they also consult on draft decisions for environmental permits.

These notices explain the Environment Agency's proposed decision and the reasons and considerations on which they have based this and to see any additional relevant information available since the application was advertised.

The Draft Permit and Decision document will be available on the following website until Tuesday, May 3rd.

www.gov.uk/government/publications/le17-6nj-mwh-treatment-limited-environmental-permit-draft-decision-advertisement

'JJ's Kiddycare'



OUTSTANDING Ofsted grading

* FREE Pre-school sessions for 2, 3 & 4 year olds

* Full Day Care 0-5yrs

Situated on a farm site between South Kilworth and Welford

* Breakfast and After School clubs. (4-14years)

* Holiday Clubs during all Northants & Leics school breaks

Tel no. 01858 575642

www.jjs-kiddycare.co.uk



Open to the Public

Golf Course, Driving Range, Tuition

Bar & Restaurant - Open All Day

Event & Conference Facilities

T: 01858 575 082 E: admin@kilworthsprings.co.uk

W: www.kilworthsprings.co.uk



CHURCH NEWS

All Saints Parish Church, Methodist Chapel & St. Mary's Roman Catholic Church

NEWS FROM THE RECTORY

I heard a story recently... As the congregation left church after a rousing and well-attended Easter Sunday service they queued to greet the minister at the door. The minister had preached about Christians being enlisted in the army of the Lord, called to service in his kingdom of love and light, and he was heard to say to the man in front 'Have you thought of enlisting in the Lord's army?' to which the man replied 'I am already enlisted - I am in the secret service!' It made me smile.

It reminded me that we should never make assumptions about other people's faith, or lack of it, based on minimal information or knowledge of them - only God knows the condition of their heart towards him. We can get clues about people from the way they behave - the bible says 'by their fruits shall you know them', but hasty judgements are often wrong.

It also made me think about those secret agents - working for God's kingdom under cover, praying, reading their Bibles, loving God, caring for others, without doing it publicly, without acknowledgement or glory, but still of immense value to the kingdom of God.

If that is you, working under cover, then thank you, I may not know who you are, but God does and I pray he will bless you. Whenever you feel the need for fellowship or companions in worship, there is welcome waiting for you among us, and if you are working 'under cover' because you are unable to get to church then give me a call, I would love to have a chat with you. May all God's children, secret or otherwise, know his peace and blessing this Easter season. *Liz*

CHURCHYARD TREE SURVEY

A recent independent survey undertaken by Harborough District Council has identified several trees in the Churchyard that need to be removed. The Churchyard is a closed one and the maintenance is the responsibility of the District Council. The trees that are due to be removed have been identified with either a sprayed X or a sprayed dot. An additional holly tree abutting 2, Church Street will also be removed.

The Parochial Church Council at a recent meeting regretted the need for the removal of these trees but noted that the absence of blown leaves would mean that the gutters of the Church would not get blocked up. The timing of removal is unknown at present and is dependent on the District Council obtaining a Faculty for the work.

WEDDING FESTIVAL

A big thank-you to everyone who donated dresses, quilts, patchwork and other historical items and memorabilia for the recent Festival of Marriage at All Saints Church to mark the 90 years birthday celebrations of HM The Queen.

Many thanks also to the door stewards and those who prepared food and helped in the servery throughout the weekend. A total of £250 was made, which will go towards necessary repairs to the South Aisle roof.

ALL SAINTS FLOWER ROTA MAY:

Janice Staples

Call Heather O'Connor on 880165 if you would like to join the Flower Rota

METHODIST CHURCH

Coffee Morning

Wednesday, May 18th

10.00am-12.00noon.

at the home of John & Margaret Scurrah
25 High Street

Visitors always welcome.

CHURCH SERVICES

Hexagon Benefice

- | | |
|----|--|
| 1 | 9.30am Communion Shearsby with Mowsley
9.30am Morning Prayer HB
11.00am Communion Thed.
11.00am Family Service B'thorpe
6.00pm Communion Arnesby |
| 8 | 9.30am Communion Shearsby
9.30am Family Service Arnesby
11.00am Communion HB
4.00pm Family Service B'thorpe
6.00pm Evensong Mowsley |
| 15 | 10.30am Benefice Service HB |
| 22 | 9.30am Communion Shearsby
11.00am Communion Arnesby with B'thorpe
5.00pm Evensong HB |
| 29 | 10.30am Benefice Service Thed. |

Short Communion every Wed. 9.15am HB

Churchwarden:

Diana Jones 880741

Rector:

Liz Bickley 880351

Methodist Church

- | | |
|----|--------------------------------|
| 1 | Mr. Roger Stephenson |
| 8 | Rev. Brian Kennard (Com.) |
| 15 | Mrs. Christine Hodgson |
| 22 | Mr. Michael Mays |
| 29 | Rev. Frances Ballantyne (Com.) |
- Services every Sunday 6.30pm.
All Welcome*

Contacts:

Rev. Brian Kennard 462889

Senior Church Steward:

Mr. A Lloyd Jones 880343

St Mary's Roman Catholic Church

Services every Sunday 8.30am.

Contact:

Robert Constable-Maxwell 880361

Father Owen O'Neil 462359

WEDDINGS • PARTIES • CORPORATE



Lodge Farm
LUXURY TOILET HIRE

01858 882176

www.lodgefarmluxurytoilethire.co.uk

A Luxury Loo for your Posh Do!

Adorbella
Mobile Beauty Therapy

CND Shellac Nails £15
Cargel Nails £20
Sienna X Spray Tan £15
Precision Brows £10
Lash Perfect Individual Eyelash Extensions £60
Lava Shell Back Massage £30

For bookings and enquiries call or text
Loren Crofts 07739632145
or visit our website
www.adorbellabeauty.co.uk

DIARY DATES for MAY

Tuesday 3 rd	Parish Council AGM & Ordinary Meeting, 7.45pm Committee Room, Village Hall
Wednesday 4 th	Historical Society - Visit to East Midlands Air Support Unit, Sulby, Meet 7.00pm The Green
Tuesday 10 th	Village Hall Annual General Meeting, 8.15pm Village Hall
Friday 13 th	Causeway Charity Coffee Morning, 10.00am - 11.30am, Church Hall
Sunday 15 th	FOBS Treasure Hunt & Fun Day, from 10.30am, Sports Pavilion
Wednesday 18 th	Methodist Coffee Morning, 10.00am - 12.00noon, 25 High Street
Friday 20 th	Mobile Library
Saturday 21 st	Millennium Wood workparty, 9.30am - 12.30pm
Thursday 26 th	Village Lunch, 12.30pm Kilworth Springs Golf Club

FORTHCOMING EVENTS

Saturday, June 4 th	Historical Society outing to University of Leicester Botanic Gardens
Saturday, June 18 th	FOBS Safari Supper
Saturday, June 25 th	BOSWORTH FESTIVAL
Tuesday, June 28 th	Village Lunch
Wednesday, July 27 th	Guided Village Heritage Walk
Sunday, August 28 th	Husbands Bosworth Horticultural and Produce Show
Saturday, November 26 th	FOBS Christmas Event

LOCAL PLANNING NEWS

The following applications have been submitted to Harborough District Council:

- 15/00185/FUL [*Messrs Garner & Wade*] Temporary siting of mobile home for agricultural occupancy, Broad Lane Farmhouse, Broad Lane (*Withdrawn*)
- 16/00403/FUL [*Mr & Mrs Pye*] Erect det. single storey dwelling & double garage (rev. sch. 15/01324/FUL), The Poplars, Berridges Lane
- 16/00433/PCD [*Springfield Supermarkets Ltd*] Discharge of conditions (materials & external lighting) of 15/01737/VAC, High Street Garage, 6 High Street
- 16/00449/FUL [*Mr David Wright*] New dwelling, associated access and car parking plus car parking for neighbouring terraced unit (revised scheme of 06/01353/FUL), 5 Broad Lane

Recently determined applications:

- 15/00183/FUL [*Mr Richard King*] Alterations to exist. barn & conversion to form office (rev. scheme/part-resubmission of 14/00044/FUL and 07/01198/FUL), Offices, Old Barn Farm Welford Road (*Approved*)
- 16/00205/NMA [*Mr Ben Skinner*] Installation of 4 no. roof lights & alteration to fenestration (proposed non-material amendment to 11/01521/FUL), 31 - 33 High Street (*Approved*)
- 16/00098/FUL [*Mr Jacob Sykes*] Erect silos, install farm track & site temporary mobile home and 3 permanent mobile homes (part-retrospective), Stud Farm, Station Road (*Approved*)

Current applications may be inspected during normal working hours at the Council Offices, The Symington Building, Adam & Eve Street, Market Harborough. Comments concerning planning applications should be addressed to the Development Control Manager.

Planning applications and other aspects of local government can now be viewed on-line at www.harboroughonline.co.uk

MOBILE LIBRARY

The Mobile Library will now be calling on the third Friday of each month.

STOPS & TIMES

School, Welford Road:	10.35am - 11.35am
Berridges Lane:	11.40am - 12.20pm
Church Street:	12.25pm - 1.00pm

BUGLE.....FREE ADS.

Phone Sylvia on 880902 or email: sylvia1_p@hotmail.co.uk

LOST Male cat, white with black head markings, black diamond nose, lost early April near Lubenham.
Contact: AnimalSearchUK (Quote ALP249981)

COMPLETE CAR CARE

Accident repair specialist
Bodywork, dent, scratch and stone-chip repair
Servicing, alloy refurbishment, welding
MoT repair
Valeting, full body polish
Parking sensors, tyres & exhausts, etc. fitted
Call Ben on 01858 880404
bencompletecarcare@outlook.com

DIANE E. HALL

'THE WHITE HOUSE BEAUTY ROOM'

Stockist of Susan Molyneux Skincare

** waxing * pedicures * lashes * exfoliating treatment **

Vouchers & Gifts available

Tel: 01858 880567 or 07732 571714