

## POST COMING SOON?

**W**ell, after months of negotiations, during which Bosworth has been without a Post Office, it looks as if Springfields are at last going to be able to transfer the service into the new premises.

The fuss started when Springfields started the transfer process back in the spring. The Post Office jumped at the chance to re-negotiate the terms under which their franchisees operate and took the opportunity to cut the core payments, which historically paid for a sub-postmaster. They argued that the shared-till system in the new shop, the increased foot-fall generated over the longer operating hours and the improved shop facilities would make up the short-fall in the core payment.

Springfields needed to be assured that the expected increase in custom would pay for the extra staff needed to operate the service through the extended hours. More importantly they needed to be able to back out if it proved uneconomic to run.

The Post Office, bless 'em, for their part, seemed keen to close the Bosworth branch altogether, pointing out that there are perfectly good Post Offices at North Kilworth and Welford, which they no doubt see as being less troublesome! No matter that the service at Kilworth is very limited and that Welford may as well be on the other side of the Moon as far as public transport between there and Bosworth is concerned!

As we understand it Springfields have now come to an agreement with the Post Office, which will allow them to run the service for a trial period. Alongside the Post Office it is also expected that the Lottery and cash machine will also return. *Post Office - Coming soon?*

## HORTICULTURAL AND CRAFT SHOW

**T**his year we had a quite different show! Last year was the 'Great Bosworth Bake Show'; this year turned into a wonderful 'Children's Show' with children's exhibits in art, baking, crafts and even horticulture! It is great to see the kids more involved and we thank FOBS and the Bosworth Tots Group for their support.

Adult craft, baking and preserves classes were again well supported and the quality and variety of exhibits were outstanding.

Alas, the same can't be said for the number of entries on the horticultural side. Sadly fewer people are growing their own vegetables - we've not seen a carrot exhibit in two years! However, flowers and floral arrangement entries remain consistent, brighten up the hall and are pleasing to look at. Our youngest winner was 8 years of age, our oldest 93, which is surely what a village community is all about? Entries and the number of exhibitors were both slightly up on last year. Keep it up! Profits were about the same, allowing us to donate £400 to village organisations.

### So, to the winner's rostrum!

Overall Points Winners	Kully & Suzanne Dhillon
Best Exhibit in Show	Kully Dhillon
Best Vegetable Exhibit	John Dawson
Best Allotment Exhibit	Kully & Suzanne Dhillon
Best Flower Exhibit	John Dawson
Best Flower Arrangement	Suzanne Dhillon
Best Bakery	Kully Dhillon
Best Preserves	Lloyd Jones
Best Craft Exhibit	Jennifer Rogers
Best Art Exhibit	Jennifer Rogers
Best Photographic Exhibit	Ken Rogers
Best Children's Exhibit	Jude Ascough

*We believe that the horticultural aspect must remain and that the show should be held a week earlier next year, prior to the Bank Holiday. We would love to hear from anyone having ideas and suggestions to improve the 2017 show.*



John Dawson and friend!

ISSUE 242

OCTOBER 2016

## THE BUGLE TEAM

### Editor:

Melvyn Forman

Firs Fm, Welford Rd. Tel: 880281

Email: bosworth\_bugle@talk21.com

### Treasurer:

Ralph Horton

18 Highcroft Tel: 880526

### Advertising:

Sylvia Price

3 Highcroft Tel: 880902

Email: sylvia1\_p@hotmail.co.uk

### Contacts:

Mike Price

3 Highcroft Tel: 880902

Jo Horton

18 Highcroft. Tel: 880526

Frances Smith

10 Butt Lane Tel: 880225

Penny Mattock

9 Fernie Court Tel: 881140

Heather O'Connor

16 Fernie Court Tel: 880165

### Postal Subscription/distribution:

Lorrie Forman Tel: 880281

Email: l.forman@talk21.com

[www.husbandsbosworth.info](http://www.husbandsbosworth.info)

### COPY DEADLINE

15<sup>th</sup> OF THE MONTH

PRECEDING PUBLICATION

## MEAL DEAL...

**L**indsey, at The Catering Corner, has recently launched a new senior suppers service, available to take away or for local delivery.

She's offering a wide selection of homemade dishes, including traditional dishes, curries, lasagnes, pasta bakes, soups, casseroles - made freshly to order with local ingredients, from only £4 per meal. For more information, or to order call 881105.



*The*  
*Catering Corner*

## POSTBAG

### *Bemused of Bell Lane*

Can anybody help me out here please, as believe you me I've asked around many a time in various places, including our fine new supermarket of course, but am generally met with just raised eyebrows, a shrug of the shoulders and generally blank faces denoting they're none the wiser regarding this too?

So, as happy as I am to keep getting the shiny bright Nisa/Springfield Supermarket flyers through my door, enticing me over with bargains galore, the list on the back page finishes by telling me of everything available there, including a Post Office, ATM and Paypoint too.

Forgive me if the obvious eludes me please, but there is no sign of any of these services developing there yet and I for one am really missing our trusted Post Office especially. So what's happening please Springfield's management, or indeed anyone else who might be able to help me here?

*Editor's Note: Similar comments have echoed around the village for some time. Hopefully the services will be resuming shortly - see Bugle front page - but to ensure that they stay we must ensure that we use them!*

### *From the Conkers Team!*

Please try to join us at the playing fields for our Conker and Welly-wanging Championships on Sunday, October 2<sup>nd</sup> from 10.30am on the village playing field. There's a host of games, stalls, music and other activities to entertain the whole family.

## POLICE FILE

**IF YOU HAVE INFORMATION ON ANY CRIMINAL ACTIVITY CALL MARKET HARBOURGH POLICE on 101**

**Neighbourhood Watch Co-ordinator**

**Stephen Bilbie**

stephenbilbie@btinternet.com

NW Community Scheme No. 2123

**Lutterworth South Neighbourhood Team**

**Sgt. 2241 Mark Williams**

**PCSO 6569 Peter Willson**

**PCSO 6008 Laura Bolton**

**PC 4203 Niké Diaper**

**Voicemail Service 0116 2485675**

**CRIMESTOPPERS**

**FREEPHONE 0800 555111**

## WATCH WORD

*THE NEIGHBOURHOOD WATCH SCHEME WITHIN HUSBANDS BOSWORTH*

Harborough and Lutterworth police are urging communities that have play areas to be vigilant following the suspected attempted theft of play equipment from a park in the area. By the nature of the crime police suspect that the aim was to remove the metalwork for scrap and considerable damage was caused to the equipment.

They are asking the public to call 999 immediately if they see anyone tampering with play equipment or call 101 if they find any damaged play equipment.

## SID REPORT

*Latest readings from the village Speed Indicator Device*

### **Kilworth Road (inbound)**

Period: 24.08.16 - 31.08.16

Vehicle movements: 13398 Av./day: 1914

Average speed: 33.60mph

*Highest recorded speed: 82mph*

### **Kilworth Road (inbound)**

Period: 31.08.16 - 07.09.16

Vehicle movements: 13033 Av./day: 1862

Average speed: 33.52mph

*Highest recorded speed: 86mph*

### **Theddingworth Road (outbound)**

Period: 07.09.16 - 14.09.16

Vehicle movements: 14784 Av./day: 1848

Average speed: 27.34mph

*Highest recorded speed: 52mph*

### **Theddingworth Road (outbound)**

Period: 14.09.16 - 21.09.16

Vehicle movements: 13662 Av./day: 1708

Average speed: 26.47mph

*Highest recorded speed: 45mph*

## CRIMESTOPPERS

Since its formation in 1988, information received by Crimestoppers has resulted in the arrest and conviction of over 134,000 criminals: more than 11 arrested every day! In addition, goods worth more than £132 million and drugs worth about £325 million on the street have been seized by police.

Crimestoppers is a registered charity and is completely anonymous, although in some cases rewards are awarded for information received. If you witness a criminal act or have any information that may be linked to a crime or offence, you can call Crimestoppers on 0800 555 111 or contact them through their on-line site at: [www.crimestoppers-uk.org](http://www.crimestoppers-uk.org).

**Remember: you will not be asked to reveal your identity, unless you wish to do so, nor will Crimestoppers trace your call.**

**DIANE E. HALL**

**'THE WHITE HOUSE BEAUTY ROOM'**

\*

**Stockist of Susan Molyneux Skincare**

**\* waxing \* pedicures \* lashes \* exfoliating treatment \***

**Vouchers & Gifts available**

**Tel: 01858 880567 or 07732 571714**

**WEDDINGS • PARTIES • CORPORATE**



*Lodge Farm*

**LUXURY TOILET HIRE**

**01858 882176**

[www.lodgefarmluxurytoilethire.co.uk](http://www.lodgefarmluxurytoilethire.co.uk)

*A Luxury Loo for your Posh Do!*

# BOSWORTH IN FOCUS

## A TASTE OF BOSWORTH

### Twice Baked Roasted Garlic Soufflés

One whole garlic bulb  
40g butter  
40g flour  
300 ml milk  
4 eggs, separated  
100g grated gruyere cheese  
300 ml double cream  
Salt & pepper

4 x ramekins, brushed with melted butter and coated inside using 2 heaped tablespoons fine breadcrumbs  
Roasting tin  
4 x buttered shallow gratin dishes or 1 large buttered dish

#### Method

Preheat oven to 200C/Gas Mark 6. Wrap garlic bulb in foil and bake for 30 mins. Squeeze flesh from each garlic clove into a small bowl. Make a sauce by putting butter, flour and milk into a pan - bring slowly to the boil, stirring constantly (mix will thicken considerably). Turn heat down and simmer for 5 minutes. Stir in roasted garlic flesh, and season. Remove from heat and cool for 5 mins. Lightly whisk egg yolks, mix well into the cooled sauce. Transfer the mixture into a large bowl. In a separate bowl whisk the egg whites until stiff but not dry, then fold into the sauce. Pour the mixture into the prepared ramekins and place in a roasting tin filled with boiling water to come ½ way up the ramekins. Bake for 20 - 25 mins until risen and firm. Leave to cool. Turn out into buttered shallow gratin dishes or one large dish. At this point the soufflés can be kept in the fridge up to 24 hours. Heat oven to 220C/ Gas Mark 7. Sprinkle soufflés with grated cheese and pour over cream. Arrange on baking tray and cook for 15 minutes until bubbling and browned. They will rise up again during this stage. Serve at once with crusty bread.

Jackie Kerr

## WILD ABOUT BOSWORTH

### Ash - *Fraxinus excelsior*

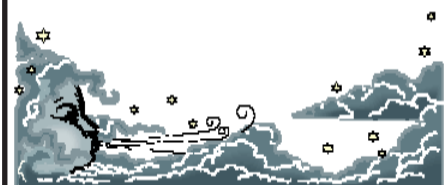
Ash trees are the third most common tree in our countryside. They can grow to around 35m in height and live for about 250 years. Their leaves, like sunflowers, turn to face the sun. Ash tree sex, is as they say, 'complicated'. There are male and female trees, and trees which biologists call, 'monoecious' - bisexual to the rest of us, with some male and some female branches. And stranger still, a branch and even a whole tree can change sex from one year to the next! After pollination by the wind, the fruits, called keys or samaras, ripen and fall the following year. Ash wood is tough and doesn't splinter under stress, hence its use in tool handles, sporting equipment and furniture. In spring ash trees are often the last to burst into leaf and the first to experience leaf-fall in the autumn, which, combined with their tendency to develop open canopies, encourages localised biodiversity. Indeed, over 1,000 woodland species, birds, mammals, insects, lichens and fungi flourish in their vicinity. Sadly, a fungus is causing the ash dieback disease, chalarra. Once infected, trees lose their leaves and the crown dies back and frequently, but not always, the tree dies. A case was recorded near Welford in 2015, so it's on our doorstep! If you think a tree might have the disease, check the symptoms against those listed on the internet and report suspected cases of chalarra to the Forestry Commission. Worse news still, is that the emerald ash boring beetle is heading towards the UK, and it kills 100% of the trees it infects. Imagine how barren our countryside would look without these noble specimens.

Mike Chanter



## WEATHER LOG

<b>AUGUST 2016</b>	<b>[2015]</b>
<b>Rain:</b> 65mm (2.6")	<b>[81.25mm]</b>
<b>Wettest day:</b> 25mm (1")	<b>[24mm]</b>
<b>Highest temp:</b> 27.5°C	<b>[31°C]</b>
<b>Lowest Temp:</b> 7.5°C	<b>[6.5°C]</b>



## APPLE DAY AT SULBY

Sulby Gardens will be opening for the fourth time in 2016 under the National Gardens Scheme, with their Apple Day on Thursday, October 13<sup>th</sup> from 2.00pm to 5.00pm. Come and see a brilliant display of mostly locally grown apples and sample the new season's Sulby Apple Juice, which will be on sale. There will be home-made teas available with apple-themed cakes! Copies of "The Story of Sulby Gardens", which includes information about Sulby Hall, Husbands Bosworth wartime aerodrome and the Polish Resettlement Camp, will be for sale at a special promotional price for visitors. Admission to the Gardens is £4 per head, children free. Stout footwear is recommended. Sulby Gardens, Sulby NN6 6EZ between Welford, Sibbertoft and Husbands Bosworth - please follow the yellow signs.

**Paul Bolton School of Motoring**  
Professional Driving Standards Agency Instructor  
New Citroen DS3 with dual controls  
Flexible pick up & drop off to your requirements  
Free sign up for online Theory Test study



Call Text or Email  
01858 880115  
07736 457 986  
paul\_bolton@hotmail.com

**The ATTIC**  
Restaurant

Open for Lunch & Evening service  
Serving contemporary British cuisine in a modern and relaxed environment  
Bespoke balcony with panoramic views  
Open Wednesday - Saturday  
12:00noon-2:30pm & 6:30pm-9:15pm  
Sunday 12:00noon - 2:30pm  
(t): 01858 575 555 (e): reservations@theatticrestaurant.co.uk  
(w): www.theatticrestaurant.co.uk  
South Kilworth Road, North Kilworth, LE17 6HJ






# SCHOOL REPORT

**HUSBANDS BOSWORTH C. of E. PRIMARY SCHOOL** Head Teacher Alan Eathorne

I am Alan Eathorne and I am proud to be the new headteacher of Husbands Bosworth C of E School. It has been a busy and productive start to the new school year and the children have settled back in really well.

The children have been working really hard and I would like to share a short passage from a Year 6 child's writing, based on a short film called 'The Piano'.

*'Sitting at the dusty, old piano, Eric played his melancholy tune. His withered, wrinkled hands rhythmically tapped each key. Major to minor, each key was another step into memory lane. As Eric played, he reminisced the memories he held so dear. Eric felt a comforting, embracing warmth as he played his haunting music...' By Edward Morgan*

## FOBS NEWS

FOBS would like to say a huge thank you to everyone who got involved in the Open Gardens and Safari Fete, especially to the garden owners for inviting us into your gardens to admire your handiwork and to those who held stalls or organised games for the village to enjoy. The weather was kind which meant a good turnout and everyone enjoyed the no fuss, relaxed atmosphere and endless fun that the event had to offer. The village hall was packed at the end of the day where the fete continued and the winner of the favourite garden was announced. Congratulations to the Wests of Welford Road for scooping the favourite garden prize, very well deserved. A final thank you to everyone who supported the raffle too. Another fantastic village event which successfully raised just under £1000 for the school. Keep an eye out for further FOBS events!

## BYGONE BOSWORTH

*Images from the Historical Society's Archive Collection*

If you have walked along the path over the canal tunnel you may have noticed this untidy stretch of fencing part way along from the Honeypot Farm Bridge end. Broken down, with trees pushing it over and, indeed, dangerous in places, the corrugated iron fencing might look like a blot on the landscape of what is really a wonderful leafy footpath. However, the fencing has an interesting history. The Grand Union canal was opened in 1813, finally connecting the coalfields of Derbyshire and north Leicestershire to the lucrative markets in the south. At Bosworth a tunnel pierced the watershed between the river Soar catchment in the north and the river Avon to the south. The tunnel was built wide enough for two narrowboats to pass, but with no towing path, and boats would be 'legged' through by the boatmen. The boat horses would be walked over the tunnel along the boat horse path.

In 1850 the Rugby to Stamford branch of the London and North Western Railway, Market Harborough's first railway connection, was opened, closely following the route of the canal. As the railway passed over the canal tunnel the line converged on the line of the boat horse path, and ran only a few feet away in a shallow cutting.

As can be imagined, a train suddenly appearing, rattling and belching smoke and steam was likely to startle the poor horse. So, this fence was erected as a horse blind, to shield the horse and prevent a runaway horse from tumbling down the embankment onto the track.



## ACTIVITY GROUPS 2016

<b>All Saints Parochial Church Council</b>	Contact: Diana Jones 880741
<b>Baby-Sitting Circle</b>	Contact: Claire Scott 880295
<b>Badminton Club</b>	Contact: Ralph Horton 880526
<b>Beaver Scout Troop</b>	Contact: Norman Byrd 07973 532678
<b>Bosworth Tots</b>	Contact: bosworthtots@hotmail.co.uk
<b>Brownie Guides</b>	Contact: Bonny Kettell 882148
<b>Conservative Association</b>	Contact: Robert Maxwell 880361
<b>Craft Group</b>	Contact: Gail Wilmot 880413
<b>Historical Society</b>	Contact: Melvyn Forman 880281
<b>Husbands Bosworth Rainbows Group</b>	Contact: Wendy Cochrane 880076
<b>1st Kilworth Scouts/Beaver unit</b>	Contact: Stuart Dainton 881431
<b>Lutterworth African Drumming Group</b>	Contact: Ralph Horton 880526
<b>Millennium Woodland Trust</b>	Contact: Jackie Fletcher 880910
<b>Playing Field Committee</b>	Contact: Jennifer Rogers 880401
<b>Royal British Legion</b>	Contact: Robert Maxwell 880361
<b>Tennis Club</b>	Contact: Jennifer Rogers 880401
<b>Tower Bell Ringers</b>	Contact: Geoff Armitage 880066
<b>Workers Education Association</b>	Contact: Sally Sherratt 571064



**Open to the Public**

**Golf Course, Driving Range, Tuition**

**Bar & Restaurant - Open All Day**

**Event & Conference Facilities**

**T: 01858 575 082 E: admin@kilworthsprings.co.uk**

**W: www.kilworthsprings.co.uk**



**DAY CARE for 3 months to 5 years of age**  
**Warm, homely and secure atmosphere.**

**The nursery is part of The Honeypot Dairy Farm; this countryside setting provides children with limitless outdoor opportunities, creating a huge range of developmental and learning experiences.**

**For a Prospectus or more information please call 01858 881038**

**Visit us at 10 Church Street, HB or email: dairyfarmdaynursery@yahoo.com**

**LIFE'S ADVENTURE STARTS HERE**

## TRADE DIRECTORY 2016

**Armourededdon Tank Paintballing Centre**  
Military vehicles, paintball & outdoor activities  
Contact: Tracey 01858 880239

**Croft Farm Bed & Breakfast**  
AA 4\*\*\*\* accommodation  
Contact: Jane Smith 880679

**Mike Price Heating Engineer**  
Oil-fired boiler servicing & repair  
Contact: Mike Price 880902

**Totally Trees Ltd.**  
Tree surgery and stump grinding  
Contact: Jacqui Mitchell 01455 554182

**Woodpecker Tree Surgery**  
All aspects of tree surgery undertaken  
Contact: Chris Wright 880818

## MILLENNIUM WOOD

The Millennium Wood, located on Mill Lane, off Kilworth Road, is the community woodland for Husbands Bosworth.

Established as a community project in 2002, to mark the new millennium, the wood is managed by trustees for the benefit of the village and parish.

A work party, to maintain and further develop the facility is organised on the third Saturday of each month. If you have a couple of hours to spare and would welcome the opportunity to 'convene with Nature' and help carry out some of the work then come along! Call Jackie on 880910 or Lorrie on 880281 for more information.

## SHINE ON OVEN CLEANING

**SINGLE OR DOUBLE OVENS  
GAS OR ELECTRIC HOBS  
EXTRACTOR HOODS AND FILTERS  
GRILLS, BBQs  
COMMERCIAL OVENS**

**FOR ALL QUOTES PLEASE  
CONTACT PHIL CLELLAND ON  
07739 851642**

**ROB DARGUE  
CARPENTRY & BUILDING Ltd.  
Husbands Bosworth**



**ALL ASPECTS OF CARPENTRY & BUILDING WORK  
EXTENSIONS & ALTERATIONS  
KITCHENS, BATHROOMS & TILING**

**Friendly, reliable service**

**For a free quotation call Rob  
01858 880803 or 07834 872205  
www.rob-dargue-carpentry.co.uk**



## ACTIVITY GROUPS

### HISTORICAL SOCIETY

The Historical Society's winter programme kicked off in fine style with another absorbing talk all about the national and international businesses that started up in Leicester and Leicestershire, by local author and historian, Brian Johnson.

Did you know that Thomas Cook Travel Agents, Halfords, Wilkinsons Stores and in recent times, Dunelm all started up in Leicester?

\*\*\*\*\*

The next meeting will be on Wednesday, October 5<sup>th</sup> when Mike Greenwood from the Leicester Transport Heritage Trust will take us back to the Leicester tram and bus services of the past.

Many of us will have fond memories of the Browns Blues, Bartons and the Midland Red buses. However, few of us will remember the trams that trundled like stately galleons into the city from the suburbs.

The meeting starts at 7.30pm in the Church Hall, Honeyput Lane. Visitors welcome.

### ART EXHIBITION & SALE

Welford Watercolourists will be holding their Annual Art Exhibition and sale of paintings and cards on Saturday, October 29<sup>th</sup> and Sunday October 30<sup>th</sup> at Welford Village Hall, West Street, Welford.

The event will be open from 10.00am to 4.00pm each day. Entry is free. Homemade light refreshments will be available.

A wide range of artwork by the group will be for sale, with a percentage of the sale price donated to our chosen charities.

*All profits this year will go to Headway brain injury charity and the Air Ambulance service.*

### CRAFT GROUP

The Craft Group meets on the second Wednesday of each month in the Committee Room of the Village Hall. The group is an opportunity for an informal exchange of ideas and tips. Call Gail on 880413.

### VILLAGE LUNCH

The next Village Lunch will be on Wednesday, October 26<sup>th</sup> at Kilworth Springs Golf Club.

If you are retired, new to the area or living alone, the Village Lunch is a great way to meet new friends. The two course lunch costs only £7.50 per person. We meet in the bar at 12.30pm. Please call Janice on 880668 to book a place or for further information.

### NEW WEBSITE FOR VILLAGE HALL

The Village Hall has a new website for bookings and other useful information! Find out all the information about booking the Village Hall and also all the different activities that are available for you to join through our new 'What's On' page.

Make sure you keep up to date with our 'Live at the Village Hall' events so you don't miss out on ticket sales. The calendar is no longer available so to find out if a date is free for a booking, please use our 'Enquire now' button. Happy surfing!

\*\*\*\*\*

### Live at the Village Hall

'Any Time, Any Place' by the Babble of Naseby. A lighthearted evening of the spoken word on Saturday, October 8<sup>th</sup> at 7.30pm. A bottle bar (run by Sam Bell) will be open before and after the performance for an after-show party!

Tickets are £5 available from Springfields Store, Husbands Bosworth.

### VILLAGE HALL BOOKINGS

**Roni Jones 07442 954729**

husbandsbosworthvh@gmail.com

www.husbandsbosworthvillagehall.co.uk

### CHURCH HALL BOOKINGS

**Janice Staples 880668**

**Bob Hutchings 880131**

### SPORTS PAVILION ENQUIRIES

**Audrey Marlow 880316**

## WOODPECKER TREE SURGERY

**All aspects of tree-work undertaken from dismantling large roadside trees to pruning and reshaping small garden trees.**

**We also offer a stump grinding service.**

**Professionally qualified and insured.**

**For free quotation and advice call**

**Chris on: 01858 880818**

**www.woodpeckertrees.com**

# PARISH COUNCIL NEWS

## PARISH COUNCIL NEWS

*Report of the Parish Council Annual General Meeting held on Tuesday, September 6<sup>th</sup> 2016.*  
Full Council and County Councillor Graham Hart were present.

### Visitors' Questions

■ Queries were raised with County Councillor Hart concerning the accesses to the two proposed developments off Welford Road. Council noted that Highways were opposed to two entrances to the 42 home Davidson's development; with separate entrances for the doctors' surgery and the housing. Council would hope that Highways could consider the cumulative impact, with the prospect of a further 32 home development opposite also accessing on the same stretch of Welford Road.

### Minutes of last meeting were read and approved

#### Cemetery

■ Work on the Chapel of Rest south doorway had now been completed to Council's satisfaction. Some work on the roof was still to be carried out.

■ Chairman had had a meeting with the contractor following concerns about some aspects of the grass cutting.

#### Playing Field & Play Area

■ It was noted that there had been no meeting of the Playing Field Committee for some time.

■ The recent RoSPA report on the safety and condition of the play equipment had not found any significant safety related issues. Some minor repairs were required.

■ Council discussed replacing the basket ball hoop with a multi-function station. Clerk to obtain prices.

■ Council noted that a drone had recently been flown in the Playing Field area. The law concerning flying drones in public places is still unclear but legislation relating to unmanned aerial vehicles stipulates that they should not be flown within 50m laterally of any person or structure, or within 150m of a group of people or event.

#### Allotments

■ Clerk informed Council that one plot was vacant.

#### Accounts

■ Monthly accounts were presented and approved.

#### Planning Issues

■ Clerk was asked to contact the agent for the proposed Davidson's development on Welford Road to find out what stage the application is at.

#### Correspondence

■ A letter from Springfields relating to the Post Office was discussed briefly.

#### Any Other Business

■ Council discussed the state of the overgrown hedge on School Lane and considered it a hazard for children walking past. Responsibility for maintenance was uncertain as both Highways and the previous owner had undertaken maintenance in the past. It was agreed to arrange for the hedge to be cut back at Council's expense.

■ Concerns had been raised about the condition of the trees at the rear of properties on Welford Road. Clerk was asked to arrange for a tree surgeon to assess them.

■ A number of incidents of dog fouling on the Old Green and the The Green had recently been noted.

*The next meeting of the Parish Council will be on Tuesday, October 6<sup>th</sup> 2016 at 7.45pm in the Committee Room of the Village Hall.*

## LOCAL OFFICERS

### Husbands Bosworth Parish Council:

#### Councillors

William Fletcher	880910 (Chairman)
Melvyn Forman	880281
Susan Fisher	880026
Patricia Hobson	880070
James Shelley	880170

#### Parish Clerk

Jackie Fletcher,  
13 School Lane,  
H.B. LE17 6JU

Tel: 880910

E-mail: jackiehbpc@btinternet.com

#### District Councillor

Lesley Bowles

Email: l.bowles@harborough.gov.uk

#### County Councillor

Graham Hart  
Lilac Cottage  
Willoughby Waterleys  
Leicester LE8 6UF

Tel: 01162 478600

E-mail: graham.hart@leics.gov.uk

## HEAVY GOODS

Car transporters squeezing through Bosworth and Welford on their journey to and from the Bruntingthorpe car auction and storage facility are the bane of those living on the roads affected. Welford Action Group (WAG), supported by Husbands Bosworth Parish Council have battled for years to get restrictions installed, with little success.

So, a commitment from four of the main car transporter operators using the site to actively discourage their drivers from using the route is hailed as a major breakthrough. Quinns, Robinsons, Carlson and Eddie Stobart have all acknowledged the problems on the narrow Berridges Lane and Bell Lane in Bosworth and the High Street in Welford and have agreed to ban their drivers from using this route, even going to the extent of asking residents to contact WAG with details if their vehicles are seen to flout the ban.

# Karting

Leicester Airport, Gartree Rd, Gt Stretton, Leicester. [www.stretton2000.com](http://www.stretton2000.com)

## The UK's Premier Karting experience

- 850M floodlit racing circuit
- Licensed Bar & Function room
- Stag & Hen Parties
- Corporate & Team Building Activities
- Childrens Parties
- 60 Mph, 300cc Thunder Karts
- Kart Club & Championship Races
- Junior Kart's Available
- Gift Vouchers Available
- Arrive & Drive Sessions

### Stretton Circuit 0116 259 2900

Open 7 days a week 10.00am - 9.00pm

## COMPLETE CAR CARE

Accident repair specialist

Bodywork, dent, scratch and stone-chip repair

Servicing, alloy refurbishment, welding

MoT repair

Valeting, full body polish

Parking sensors, tyres & exhausts, etc. fitted

Call Ben on 01858 880404

[bencompletecarcare@outlook.com](mailto:bencompletecarcare@outlook.com)



# CHURCH NEWS

All Saints Parish Church, Methodist Chapel & St. Mary's Roman Catholic Church

## From the Rectory

What does harvest mean to you?

- Golden fields, freshly cut, neatly packaged bales, full barns, hope of a good price.
- Brightly coloured dahlias and chrysanthemums, ripening tomatoes, fat marrows.
- The musty smell of apples, fresh vegetables for the table, conkers.
- A nice home, a healthy bank account, the result of hard work.
- A family grown, living worthwhile lives, bringing forth a family of their own.
- Medals for our Olympians and Para-Olympians, the harvest of hard training.
- Peace with your neighbours, a supportive community – the harvest of good relationships.
- A kind nature, living generously, a life of good works, many friends – the harvest of the spirit, which is love, joy, peace, kindness, goodness, faithfulness, gentleness, self-control and patience.
- Hope of heaven, the peace and the presence of God, joy in our souls – the harvest of faith.

For some, harvest will mean ruined crops that cannot be harvested from mined fields; withered crops where the rains did not come. Fear and sorrow for those whose livelihoods and homes are ruined by violence and war. Uncertainty, desolation, hunger and despair for those who do not know what the future holds or where they will get their next meal. Let's give thanks for what we have and pray for those who are in need this harvest time. We thank you Lord and Creator of all things, for the blessings of this life and the abundant variety of your gifts - for the food we eat and the pleasure it gives us. But we know that millions don't have enough, while others eat in excess. Food is wasted while millions starve. Nature's resources are misused to bring profit.

Forgive us Lord, for our selfishness, and open our hearts to the needs of the hungry wherever they may be. *Amen.*

Our Harvest Festival Service at All Saints Church will be on Sunday, October 9<sup>th</sup> at 11.00am - we would love to see you there. *Liz*

## BOSWORTH TOTS

Bosworth Tots is a stay-and-play session for tots (from birth to pre-school) and their parents, grandparents, carers and child minders. We meet on Thursday mornings at the Village Hall. For more details email: [bosworthtots@hotmail.co.uk](mailto:bosworthtots@hotmail.co.uk)

## Parish Notices

**Stanley McGinnes**  
Of Cherry Tree Close  
Died August 21<sup>st</sup> 2016  
Aged 86 years

**'Mu' Wright**  
Formerly Licensee at  
The Cherry Tree  
Died August 24<sup>th</sup> 2016  
at Lytham, Lancs.  
Aged 73 years

## ALL SAINTS FLOWER ROTA

**October:**

*Marion Timms*

Call Heather O'Connor on 880165  
if you would like to join the Flower Rota

## METHODIST CHURCH

Mrs Jeanne Moore will be leading our Harvest Festival service on Sunday, October 2<sup>nd</sup>.

Gifts of canned and dry-packed foods suitable for Lutterworth Foodbank would be warmly welcomed.

## METHODIST CHURCH

### Coffee Morning

Wednesday, October 19<sup>th</sup>  
10.00am-12.00noon.

at the home of John & Margaret Scurrah  
25 High Street  
Visitors always welcome.

## CHURCH SERVICES

### Hexagon Benefice

- |    |  |
|----|--|
| 2  | 9.30am Communion Shearsby with Mowsley<br>9.30am Communion HB<br>11.00am Communion Thedd.<br>11.00am Family Service B'thorpe<br>6.00pm Communion Arnesby<br>6.00pm HARVEST Mowsley |
| 9  | 9.30am Communion Shearsby<br>9.30am Family Service Arnesby<br>11.00am HARVEST HB<br>4.00pm Messy Church B'thorpe<br>6.00pm Evensong Mowsley  |
| 16 | 10.30am Benefice Service Thedd.  |
| 23 | 9.30am Morning Prayer Shearsby<br>11.00am Communion B'thorpe with Arnesby<br>5.00pm Promise Keepers HB   |
| 30 | 10.30am Benefice Service Shearsby<br>3.00pm Memorial Service Mowsley   |

Short Communion every Wed. 9.15am HB  
Churchwarden:

Diana Jones 880741

Rector:

Liz Bickley 880351

### Methodist Church

- |    |                            |
|----|----------------------------|
| 2  | Mrs. Jeanne Moore Harvest  |
| 9  | Mrs. Christine Hodgson     |
| 16 | Rev. Andrew Murphy (comm.) |
| 23 | Mrs. Jeanne Moore          |
| 30 | Rev. Andrew Murphy         |
- Services every Sunday 6.30pm.  
All Welcome

Contacts:

Rev. Brian Kennard 462889

Senior Church Steward:

Mr. A Lloyd Jones 880343

### St Mary's Roman Catholic Church

Services every Sunday 8.30am.

Contact:

Robert Constable-Maxwell 880361

Father Owen O'Neil 462359



**Scott Clarke Building**

07725 552566  
01858 880863  
[sclarkebuilding@outlook.com](mailto:sclarkebuilding@outlook.com)

Alterations  
Extensions  
Plastering  
Hard-landscaping  
Block-paving  
General Building Works  
For free quote or design ideas call Scott



**P.C. BUILDING SERVICES LTD**

Established  
27 years



Complete building service  
Specialist in new build  
Quality renovations  
& Extensions

**Tel/Fax 01858 881202**  
Email: [pcbuidserv@btinternet.com](mailto:pcbuidserv@btinternet.com)

Walton Grange, Bosworth Road  
Walton, Lutterworth, Leics LE17 5RW

## DIARY DATES for OCTOBER

Sunday, October 2 <sup>nd</sup>	Conker & Welly-Wanging Championships from 10.30am, Playing Field
Tuesday, October 4 <sup>th</sup>	Parish Council meeting, 7.45pm Committee Room, Village Hall
Wednesday, October 5 <sup>th</sup>	Historical Society meeting - Leicester Transport Heritage Trust - 7.30pm Church Hall
Saturday, October 8 <sup>th</sup>	'Babble of Naseby' concert, 7.30pm Village Hall
Friday, October 14 <sup>th</sup>	Causeway Coffee Morning, 10.00am - 11.30am Church Hall
Thursday, October 13 <sup>th</sup>	Sulby Gardens Apple Day 2.00pm - 5.00pm Sulby
Saturday, October 15 <sup>th</sup>	Millennium Wood work party, 9.30am - 12.30pm
Wednesday, October 19 <sup>th</sup>	Methodist Coffee Morning, 10.00am - 12.00noon, 25 High Street
Friday, October 21 <sup>st</sup>	Mobile Library
Wednesday, October 26 <sup>th</sup>	Village Lunch, 12.30pm Kilworth Springs Golf Club
Sunday, October 30 <sup>th</sup>	BRITISH SUMMER-TIME ENDS - <i>Remember to put your clocks BACK!</i>

## FORTHCOMING EVENTS

Tuesday, November 1 <sup>st</sup>	Parish Council meeting
Saturday, November 19 <sup>th</sup>	Millennium Wood workparty
Thursday, November 24 <sup>th</sup>	Village Lunch
Saturday, November 26 <sup>th</sup>	FOBS Christmas Event
Sat., 3 <sup>rd</sup> & Sun. 4 <sup>th</sup> Dec.	All Saints Christmas Festival
Sat., January 14 <sup>th</sup> 2017	Govannen Celtic music concert, Village Hall
Fri., February 24 <sup>th</sup> 2017	Village Hall Quiz

### LOCAL PLANNING NEWS

The following applications have been submitted to Harborough District Council:

■ 16/01250/REM [Davidsons Developments Ltd] Erection of up to 41 dwellings and a doctors surgery (Res. matters of 15/00176/OUT), Land east of, Welford Road

**Recently determined applications:**

■ 16/00818/FUL [Mr Simon Cohen] Change of use C2 (resid. institute) to C3 (dwelling), 29 High Street (*Approved*)

■ 16/01107/FUL [Mr Martin Pole] Change of use paddock to horse menage, Dismantled Railway Land, Broad Lane (*Approved*)

■ 16/01177/TPO [Mrs Deborah Round] Works to trees (fell) (HDC TPO 208), Bosworth House, Berridges Lane (*Approved*)

*Current applications may be inspected during normal working hours at the Council Offices, The Symington Building, Adam & Eve Street, Market Harborough. Comments concerning planning applications should be addressed to the Development Control Manager.*

*Planning applications and other aspects of local government can now be viewed on-line at [www.harboroughonline.co.uk](http://www.harboroughonline.co.uk)*

### MOBILE LIBRARY

#### NOTE CHANGES TO SERVICE

*The Mobile Library will now be calling on the third Friday of each month.*

#### STOPS & TIMES

School, Welford Road:	10.35am - 11.35am
Berridges Lane:	11.40am - 12.20pm
Church Street:	12.25pm - 1.00pm

Now lending Talking Books on CD & tape

\*\*\*\*\* You can now renew on-line or by phone \*\*\*\*\*

### Yoga at North Kilworth Village Hall

*Wednesday 7.00pm to 8.30pm £6pw or £33 for 6 weeks*

*Monday 11.00am to 12.00pm £5pw or £26 for 6 weeks*

*Unused weeks roll over into next term*

*Dates: Autumn yoga runs from September 26<sup>th</sup> 2016*

*Places must be booked*

*Phone: 07769 805588*

*Email: [fran.ritson@gmail.com](mailto:fran.ritson@gmail.com)*

*Fran Ritson*

*Yoga Teacher (British School of Yoga)*

*BGi Insured*



*The UK's only Tank Paintball Battle Venue*

- \*Tank Drive Experiences \* Dads & Lads Experiences\*
- \*Military Vehicle Driving \*Military Vehicle Driving\*
- \*Children's Military Vehicle Party \* Woodland Paintball\*
- \*Archery\*
- \*Air Rifle Shooting\*

*Suitable for individuals, Family Fun, Corporate Events  
Stag/Hen Parties*

*\*\*Gift Vouchers Available\*\**

*[www.armourededdon.co.uk](http://www.armourededdon.co.uk) Tel: 01858 880239*

*Bookings by Appointment Only*



### 'JJ's Kiddycare'



**\*OUTSTANDING\*** Ofsted grading

**\* FREE** Pre-school sessions for 2, 3 & 4 year olds

**\* Full Day Care** 0-5yrs

*Situated on a farm site between South Kilworth and Welford*

**\* Breakfast and After School clubs.** (4-14years)

**\* Holiday Clubs** during all Northants & Leics school breaks

**Tel no. 01858 575642**

**[www.jjs-kiddycare.co.uk](http://www.jjs-kiddycare.co.uk)**

