

## FAST LANE

**W**ith the opening of the M1 northbound to M6 link in July, the switching of the A14 to M6 westbound to its permanent alignment in August and opening the free-flow link from the M1 southbound to A14 in September, all major road connections at the Catthorpe interchange have now been completed. Traffic and speed restrictions through the junction are due to be lifted on November 7<sup>th</sup>, completing the main carriageway works.

Work is now continuing to finish the new Swinford to Catthorpe local link road, which will pass beneath the junction, through the old bridge and across the site of the infamous 'dumb-bell' roundabouts, with no access to the motorways or A14.

We are still likely to experience overnight closures into November to enable ancillary works to be completed, resulting in increased traffic on the A4304 and A5199.



## SLOW LANE

**A**s we noted in the September issue, Husband Bosworth School is hoping to introduce an Advisory 20mph Zone to improve safety in the vicinity of the school. If the proposal is accepted, the area covered will include the Kilworth Road and High Street approaches to the crossroads, and Welford Road outside the school. Lower vehicle speeds and improved driver behaviour has been noted where similar signs have been erected at sites elsewhere. Advisory 20mph Zones are not only associated with reducing speeds, but also promote the feeling of a safer environment, where parents are more willing to allow their children to either walk or cycle as part of their journeys to and from school. As well as the associated environmental benefits this brings, it also promotes healthier lifestyles and encourages children to exercise.

## ALL-CONKERING HEROES

**A** big thank you from the Conker and Welly Wanging Committee to everyone who helped at the recent Championships. We had a great day once again and managed to raise over £1200, enabling us to send donations of £450 to each of our two main charities: The Muscular Dystrophy Association and The Stroke Association, as well as supporting a number of worthy causes within the village.

The winners were:

### Conkers

Men: *James Shelley*,

Ladies: *Christine Fernandes*

Child age 13-18: *Callum Clarke*

Child age 9-12: *Elliott Hurrell*

Child age 6-8: *George Garner-Jones*

Team: *Soggy Biscuits*

### Welly Wanging

Men: *James Shelley*

Ladies: *Sam Bell*

Boys age 11-15: *Harris Pole*

Girls age 11-15: *Georgina Fisher*

Child age 10 & under: *Isabelle Davies*

ISSUE 243

NOVEMBER 2016

## THE BUGLE TEAM

### Editor:

Melvyn Forman

Firs Fm, Welford Rd. Tel: 880281

Email: [bosworth\\_bugle@talk21.com](mailto:bosworth_bugle@talk21.com)

### Treasurer:

Ralph Horton

18 Highcroft Tel: 880526

### Advertising:

Sylvia Price

3 Highcroft Tel: 880902

Email: [sylvia1\\_p@hotmail.co.uk](mailto:sylvia1_p@hotmail.co.uk)

### Contacts:

Mike Price

3 Highcroft Tel: 880902

Jo Horton

18 Highcroft. Tel: 880526

Frances Smith

10 Butt Lane Tel: 880225

Penny Mattock

9 Fernie Court Tel: 881140

Heather O'Connor

16 Fernie Court Tel: 880165

### Postal Subscription/distribution:

Lorrie Forman Tel: 880281

Email: [lforman@talk21.com](mailto:lforman@talk21.com)

[www.husbandsbosworth.info](http://www.husbandsbosworth.info)

**COPY DEADLINE**  
**15<sup>th</sup> OF THE MONTH**  
**PRECEDING PUBLICATION**

## POWER STRUGGLE

**P**lans have been tabled to build a giant diesel-powered generating plant next to the Catthorpe interchange. A bank of 50 stand-by generating units is planned, to back up National Grid electricity supplies during short periods of peak demand.

## FOBS Christmas Dinner Dance

Sat 26<sup>th</sup> November

*Asconough's*

Market Harborough

**£50 TICKET**  
6.45pm-1am  
Welcome Aperitif  
4 Course Dinner  
Cheese & Biscuits  
Disco & Auction

Tickets on sale from Deb Knight  
Email [debs\\_knight@msn.com](mailto:debs_knight@msn.com) or ring 880318

Tickets are limited & are non refundable.  
Transport there and back will be provided at an extra cost.  
You will be required to pre order if attending the meal.  
The organisers reserve the right to cancel or change the event due to unforeseen circumstances.

Thank you for supporting our school.

**£10 TICKET**  
9pm-1am  
Cheese & Biscuits  
Disco & Auction

## POSTBAG

### Open Letter from Husbands Bosworth Parish Council

Husbands Bosworth Parish Council (HBPC) has a number of projects in the pipeline, which we are encouraging parishioners to be involved in. Recently, Councillors met consultants with a view to starting a Neighbourhood Plan, which will look at the development of the village over the next 25 years. The main area will be planning, including the identification of possible sites for future development. More information on how parishioners can/will be involved will follow shortly.

On Tuesday, November 15<sup>th</sup> 2016 we will be holding the HBPC Precept Meeting in the Village Hall Committee Room at 7.45pm. This meeting is to set the budget for the 2017-18 financial year. This year we will be looking at increasing the budget for a number of reasons, including the reduction of services from the county and district councils and the need for the parish council to increase services to compensate. We also need to be aware of the possibility of capping of the Precept in the near future. Additionally, we need to budget for a change in the financial management of the Sports Pavilion. Parishioners are entitled and indeed welcome, to attend this meeting.

Finally, the Parish Council is looking to set up a Section 106 Funding Group. Section 106 funding is generated by new developments and is made available to organisations for the upgrading of services to accommodate the population increases following the development. Funding can be applied for by existing organisations/services or for new ideas. If you think your organisation could qualify for funding or, as a parishioner, you feel there is a project the parish council should be looking at, please contact a Council member or the Clerk (01858 880910). An initial meeting for interested parties will take place prior to the Parish Council Meeting at 7.00 pm on Tuesday, December 6<sup>th</sup> 2016 in the Village Hall Committee Room. For further information on any of the above, please contact Councillor Bill Fletcher on 01858 880910.

### POLICE FILE

IF YOU HAVE INFORMATION ON ANY CRIMINAL ACTIVITY CALL MARKET HARBOROUGH POLICE on 101

Neighbourhood Watch Co-ordinator

Stephen Bilbie

stephenbilbie@btinternet.com

NW Community Scheme No. 2123

Lutterworth South Neighbourhood Team

Sgt. 2241 Mark Williams

PC 1261 Andrew Cooper

PCSO 6569 Peter Willson

PCSO 6008 Laura Bolton

PC 4203 Niké Diaper

Voice Service 0116 2485675

CRIMESTOPPERS

FREEPHONE 0800 555111

Last month we noted that Welford's traffic group, the Welford Action Group (WAG) had received encouraging responses from some of the car transporter operators using the Bruntingthorpe vehicle storage facility. Car transporter movements are the bane of those living on the A5199 through Welford and Bosworth. Four of the main operators agreed to advise their drivers to use the more appropriate Pincet Lane route and asked that villagers report any of their vehicles using the A5199. If you do see any transporters using the A5199 take the registration number and time and report it to: welfordactiongroup@mail.com

### WATCH WORD

THE NEIGHBOURHOOD WATCH SCHEME WITHIN HUSBANDS BOSWORTH

Residents are urged to be vigilant following reports of two vehicles in the area on the same day, with male occupants asking about scrap metal. Residents are reminded to ring 101 if they feel that there is any activity that they feel is unusual or suspicious.

In a second incident, there has been a theft of tools from a workshop and Lutterworth Police would like to take this opportunity to advise residents to keep an updated review of their security arrangements.

As we approach winter it would be a good opportunity to check that your vehicle is in good shape for the cold weather. Break-downs can double in cold weather, so booking your car in for a winter check-up would be a good idea or, if you are a keen DIY mechanic, you could check your own vehicle's 'vital signs'!

*A reminder to residents: There will be a Police Beat Surgery at Lutterworth Library on Friday November 4<sup>th</sup>, 2.30pm - 4.30pm. If you are in Lutterworth and would like to drop in to The Library to speak to a police officer on any aspect of local policing, we would love to see you.*

### SID REPORT

Readings from the Speed Indicator Device

**Theddingworth Road (Inbound)**

Period: 21.09.16 - 28.09.16

Vehicle movements: 14916 Av./day: 2131

Average speed: 31.37mph

*Highest recorded speed: 63mph*

**Theddingworth Road (inbound)**

Period: 28.09.16 - 05.10.16

Vehicle movements: 14652 Av./day: 2093

Average speed: 31.49mph

*Highest recorded speed: 69mph*

**Berridges Lane (Inbound)**

Period: 05.10.16 - 12.10.16

Vehicle movements: 7326 Av./day: 916

Average speed: 22.46mph

*Highest recorded speed: 37mph*

**Berridges Lane (Inbound)**

Period: 12.10.16 - 19.10.16

Vehicle movements: 6996 Av./day: 875

Average speed: 22.54mph

*Highest recorded speed: 35mph*



**P.C. BUILDING SERVICES LTD**

Established  
27 years



Complete building service  
Specialist in new build  
Quality renovations  
& Extensions

**Tel/Fax 01858 881202**  
**Email: pcbuildserv@btinternet.com**

Walton Grange, Bosworth Road  
Walton, Lutterworth, Leics LE17 5RW

WEDDINGS • PARTIES • CORPORATE




*Lodge Farm*  
**LUXURY TOILET HIRE**

**01858 882176**  
[www.lodgefarmluxurytoilethire.co.uk](http://www.lodgefarmluxurytoilethire.co.uk)

*A Luxury Loo for your Posh Do!*



# BOSWORTH IN FOCUS

## A TASTE OF BOSWORTH

A simple fruit loaf that is quick to make using the rubbing-in method and keeps for up to a week. Ideal for afternoon tea or a picnic.

### Apricot and Prune Loaf

125g dried apricots  
125g dried prunes  
175g butter- diced  
2 eggs- beaten  
225g self raising flour  
1/2 tsp salt  
125g caster sugar  
2 tablespoons milk

### Method

Heat oven to 180°C , Gas Mark 4. Grease a 450g (1lb) loaf tin. Place dried fruit in a bowl, cover with boiling water and leave for 10 minutes. Drain liquid and chop fruit into bite sized pieces- set aside. In a separate bowl, sift flour and salt together. Rub in butter until mixture resembles breadcrumbs. Stir in sugar and chopped fruit. Then add beaten eggs and milk, and mix lightly. Pour mixture into loaf tin and bake for 1 hour - 1 hour 15 mins, until top is browned and skewer inserted into the middle comes out clean. Leave to cool - store in an airtight tin.

Jackie Kerr

## WEATHER LOG

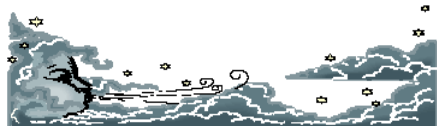
SEPTEMBER 2016 [2015]

Rain: 44.5mm (1.8") [57mm]

Wettest day: 13mm (0.5") [14mm]

Highest temp: 28°C [23°C]

Lowest Temp: 5.5°C [3.5°C]



## WILD ABOUT BOSWORTH

What moth is that?

There are around 2,500 species of moths in the UK. So, how do you tell one from another? Firstly, is it a moth or one of the 59 UK species of butterfly? Well, moths fly at night and butterflies in the day. Except some moths fly during the day, and some butterflies occasionally fly at night... Butterflies rest with their wings upright over their backs, but so do some moths. Anatomically, only moths have a small hook that locks their fore and hind wings together.

However, living *lepidoptera* are rarely willing to sit still under a microscope.

Truthfully though, if you don't recognise it as a butterfly, it's almost certainly a moth. So, the first step towards identification should be to look for the culprit amongst an identity parade of usual suspects - common varieties. If that fails, there are books showing hundreds of pictures of brown and tan moths, which you can compare with the brown and tan one you saw.

I've frequently seen individuals of the pictured species, and it didn't take long to discover it's an 'Angle Shades' - *Phlogophora meticulosa*. This specimen was seen resting on a black bin, but amongst the leaf litter they're virtually indistinguishable from the scattered debris. Angle Shades caterpillars can cause damage to herbaceous plants. The RHS suggests seeking out the offenders after dark, then relocating them to a patch of brambles or nettles.

If damaging our garden plants is the Mr. Hyde side of moths, what is their Dr. Jekyll? Well, they aid pollination of important food crops when feeding on nectar. Additionally, they're a vital food source for bird life. It's estimated that blue tit chicks consume around 35 billion caterpillars a year!

Mike Chanter



## SULBY GARDENS

Sulby Gardens will be open on Thursday, November 17<sup>th</sup>, 1.00pm to 4.00pm, when late autumn colour will be the focus of the final open day at Sulby Gardens for the 2016 season.

Sulby Gardens Apple Juice and home-made teas will be available and copies of 'The Story of Sulby Gardens', including Sulby Hall, Husbands Bosworth wartime aerodrome and the Polish Resettlement Camp will be on sale at a special promotional price for garden visitors.

Admission to the Gardens is £4 per head, children are free, in aid of the National Gardens Scheme. Stout footwear is recommended. Sulby Gardens, Sulby, Northants NN6 6EZ

## APOLOGY...

**Oops... Due to the Editor failing to scroll to the bottom of Eleanor Murphy's email the following paragraph was unfortunately omitted from last month's Horticultural Show report:**

*"Many thanks to our sponsors, cake bakers and all those who made the show so successful; especially FOBS in helping with the set up, clear up and in the kitchen - many hands make much lighter and swifter work! Lastly, thanks to the preschool and primary school children for the colourful, thoughtful and skilled horticultural paintings and posters."*

## DIANE E. HALL

'THE WHITE HOUSE BEAUTY ROOM'

\*

Stockist of Susan Molyneux Skincare

\* waxing \* pedicures \* lashes \* exfoliating treatment \*  
Vouchers & Gifts available

Tel: 01858 880567 or 07732 571714

## COMPLETE CAR CARE

Accident repair specialist

Bodywork, dent, scratch and stone-chip repair

Servicing, alloy refurbishment, welding

MoT repair

Valeting, full body polish

Parking sensors, tyres & exhausts, etc. fitted

Call Ben on 01858 880404

*bencompletecarcare@outlook.com*

# SCHOOL REPORT

**HUSBANDS BOSWORTH C. of E. PRIMARY SCHOOL** Head Teacher Alan Eathorne

We are having a great Autumn Term at school. The children across the school have been enjoying their topics based around Construction, The Great Fire of London, The Stone Age and World War II. We had a fantastic Harvest Service where the parents and children gave offerings for the Lutterworth & Villages Food Bank.

We are very fortunate that the 'Open the Book' group and the 'JIM JAMs' group come to the school to read and act out stories from the Bible. The children and staff, really enjoy this and it helps us all to reflect. A big thank you from all of us at the school.

I would just like to leave you with a short extract from Rowan Cochrane's (Class 4) evacuation description;

*'With a gas mask strapped around my shoulders and the handle of a small suitcase around my fingers, I knew it was time. The cries of children made me more nervous by the second. I did not know where my mum was, she had been torn away from me by the crowds of children and parents. I was in no rush to get on the train but as the train whistle screeched through the station, I boarded the train almost sure I would regret it later.'*

## BYGONE BOSWORTH

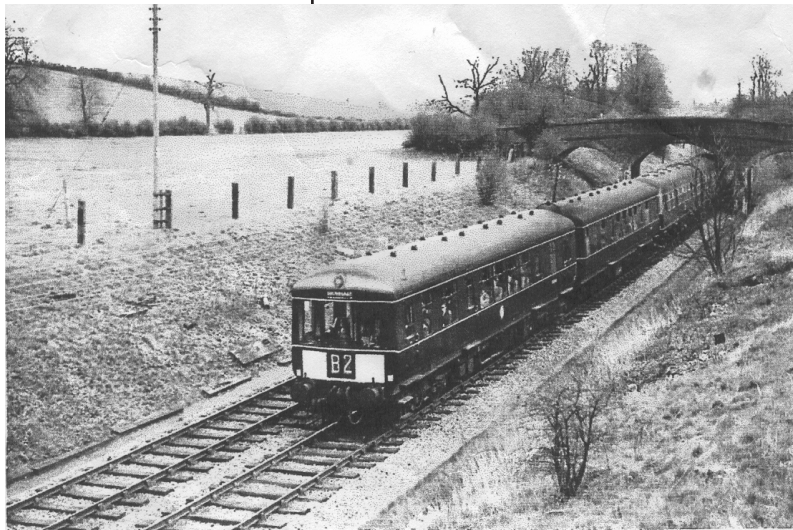
*Images from the Historical Society's Archive Collection*

The London & North Western Railway opened the Rugby to Stamford railway in 1850 as an attempt to join the industries and population of the west Midlands to the lucrative markets in the eastern counties. Engineered from the outset as double track, the line was initially laid single, the second track not being laid until 1878.

The value of the anticipated traffic through the largely rural east Leicestershire countryside had been over-estimated and more profitable links directly to Northampton, and hence Peterborough, ensured that the branch never realised any great commercial potential. Locally, however, by the time this month's photograph was taken in 1964, the line was serving as a convenient short-haul connection to Rugby, handy for serving the colossal British Thomson-Houston (BTH) works, a major electrical engineering and heavy industrial company, which employed many local people.

The photograph shows an early diesel multiple unit (DMU) light passenger train heading for Rugby under the Leicester Road bridge, north of Husbands Bosworth. By the number of passengers peering out into the frosty morning the service appears to be well subscribed at this time. However, Dr. Beeching's axe was poised; goods traffic had ceased only 12 months previously on April 6<sup>th</sup> 1964 and the line finally closed to all traffic on June 6<sup>th</sup> 1966.

Interestingly, the train in our picture carries yellow safety panels on the front. These were introduced in the early 1960s when electric and diesel units were replacing steam locos. Being far quieter, workmen working on the line found the new locos difficult to anticipate as they approached and so new regulations were introduced for all diesel and electric trains to have yellow warning panels on the front ends. This requirement still exists today.



## ACTIVITY GROUPS 2016

<b>All Saints Parochial Church Council</b>	Contact: Diana Jones 880741
<b>Baby-Sitting Circle</b>	Contact: Claire Scott 880295
<b>Badminton Club</b>	Contact: Ralph Horton 880526
<b>Beaver Scout Troop</b>	Contact: Norman Byrd 07973 532678
<b>Bosworth Tots</b>	Contact: bosworthtots@hotmail.co.uk
<b>Brownie Guides</b>	Contact: Bonny Kettell 882148
<b>Conservative Association</b>	Contact: Robert Maxwell 880361
<b>Craft Group</b>	Contact: Gail Wilmot 880413
<b>Historical Society</b>	Contact: Melvyn Forman 880281
<b>Husbands Bosworth Rainbows Group</b>	Contact: Wendy Cochrane 880076
<b>1st Kilworth Scouts/Beaver unit</b>	Contact: Stuart Dainton 881431
<b>Lutterworth African Drumming Group</b>	Contact: Ralph Horton 880526
<b>Millennium Woodland Trust</b>	Contact: Jackie Fletcher 880910
<b>Playing Field Committee</b>	Contact: Jennifer Rogers 880401
<b>Royal British Legion</b>	Contact: Robert Maxwell 880361
<b>Tennis Club</b>	Contact: Jennifer Rogers 880401
<b>Tower Bell Ringers</b>	Contact: Geoff Armitage 880066
<b>Workers Education Association</b>	Contact: Sally Sherratt 571064



**MILITARY VEHICLE DRIVING AND TANK BATTLES AT**  
**ARM-OURGEDDON**

*The UK's only Tank Paintball Battle Venue*

- \*Tank Drive Experiences \* Dads & Lads Experiences\*
- \*Military Vehicle Driving \*Military Vehicle Driving\*
- \*Children's Military Vehicle Party \* Woodland Paintball\*
- \*Archery\*

\*Air Rifle Shooting\*

Suitable for individuals, Family Fun, Corporate Events  
Stag/Hen Parties

\*\*Gift Vouchers Available\*\*

www.armourededdon.co.uk Tel: 01858 880239

Bookings by Appointment Only



## Paul Bolton School of Motoring

Professional Driving Standards Agency Instructor  
New Citroen DS3 with dual controls  
Flexible pick up & drop off to your requirements  
Free sign up for online Theory Test study



Call Text or Email  
01858 880115  
07736 457 986  
paul\_bolton@hotmail.com



## TRADE DIRECTORY 2016

**Armourededdon Tank Paintballing Centre**  
Military vehicles, paintball & outdoor activities  
Contact: Tracey 01858 880239

**Croft Farm Bed & Breakfast**  
AA 4\*\*\*\* accommodation  
Contact: Jane Smith 880679

**Mike Price Heating Engineer**  
Oil-fired boiler servicing & repair  
Contact: Mike Price 880902

**Totally Trees Ltd.**  
Tree surgery and stump grinding  
Contact: Jacqui Mitchell 01455 554182

**Woodpecker Tree Surgery**  
All aspects of tree surgery undertaken  
Contact: Chris Wright 880818

To advertise here call Sylvia  
on 880902  
or Email: [sylvia1\\_p@hotmail.co.uk](mailto:sylvia1_p@hotmail.co.uk)

## CRAFT GROUP

The Craft Group meets on the second Wednesday of each month at 7.30pm in the Committee Room of the Village Hall. If you have a pastime or craft that is relatively portable and would welcome the opportunity to meet like-minded 'crafty' folk away from the distractions of home-life, why not come along? A small fee is charged to cover hall hire and a cuppa. Call Gail on 880413 for more information.

## ACTIVITY GROUPS

### HISTORICAL SOCIETY

The next meeting of the Historical Society will be on Wednesday, November 2<sup>nd</sup>, when military historian, Dr. John Sutton, will be telling us *'The Story of the Unknown Warrior'*, a poignant tale at this time of Remembrance.

*On Armistice Day in 1920 the body of an unidentified British soldier, who had died on a Great War battlefield was reburied with full state honours in Westminster Abbey as this country's tribute to the many thousands of 'Soldiers known only unto God' who died in service of their country.*

The meeting is at 7.30pm in the Church Hall, Honeypot Lane and is open to all.

### MILLENNIUM WOOD

The next meeting of the Millennium Wood group will be on Saturday, November 19<sup>th</sup> at 9.30am. The group meets for about 3 hours, usually on the third Saturday of each month, to carry out routine maintenance and restoration work at the village's community woodland on Mill Lane.

Recently the volunteers have been resurfacing the pathways with woodchip kindly donated by Welland Waste Management at Pebble Hall. The group has also trimmed the southern hedge, which was laid in 2014-15. Anyone looking for a little work-out in the fresh air and is interested in helping would be most welcome - all you need is enthusiasm, stout footwear and gloves! Call Jackie on 880910 or Lorrie 880281.

### VILLAGE LUNCH

The next Village Lunch will be on Thursday, November 24<sup>th</sup> at Kilworth Springs Golf Club. Meet as usual at 12.30pm. The cost of the two-course meal, including coffee, tea and mints is only £7.50 per person.

*The Village Lunch Christmas Meal will be on Tuesday, December 20<sup>th</sup>. If you would like to join the group for this special dinner and won't be at the November meal, when Janice will be taking names, please call her on 880668 to book.*


### BOSWORTH TOTS

Bosworth Tots is a stay-and-play session for tots (from birth to pre-school) and their parents, grandparents, carers and child minders.

The group meets from 9.30am to 11.30am (term time only) on Thursday mornings at Husbands Bosworth Village Hall. The cost is £2.50 for one child and then 50p for every additional child after that. For more details email: [bosworthtots@hotmail.co.uk](mailto:bosworthtots@hotmail.co.uk)


### BUGLE CRACKER

Someone posted on my Facebook page: *How many blonds does it take to change a lightbulb? I thought it was a joke, but it continued: Need to know ASAP!*



**Fully Insured Dog Walking and Pet Sitting Services**

Friendly and Reliable  
Husbands Bosworth and Surrounding Areas



Get in touch to book or find me on Tailster!  
[kerrykane2@gmail.com](mailto:kerrykane2@gmail.com)  
07701 046900

**VILLAGE HALL BOOKINGS**  
*Roni Jones 07442 954729*  
[husbandsbosworthvh@gmail.com](mailto:husbandsbosworthvh@gmail.com)  
[www.husbandsbosworthvillagehall.co.uk](http://www.husbandsbosworthvillagehall.co.uk)

**CHURCH HALL BOOKINGS**  
*Janice Staples 880668*  
*Bob Hutchings 880131*

**SPORTS PAVILION ENQUIRIES**  
*Audrey Marlow 880316*



**HANNAH**  
— BEAUTY THERAPY —  
**COLLINS**

BY APPOINTMENT ONLY  
**T : 07736 939993**  
[hcbeautytherapy.co.uk](http://hcbeautytherapy.co.uk)

A Unique One-to-One  
Personal Beauty Experience  
42 High Street - Welford

**ROB DARGUE**  
**CARPENTRY & BUILDING Ltd.**  
Husbands Bosworth



**ALL ASPECTS OF CARPENTRY & BUILDING WORK**  
**EXTENSIONS & ALTERATIONS**  
**KITCHENS, BATHROOMS & TILING**

**Friendly, reliable service**  
For a free quotation call Rob  
01858 880803 or 07834 872205  
[www.rob-dargue-carpentry.co.uk](http://www.rob-dargue-carpentry.co.uk)






**Scott Clarke Building**

07725 552566  
01858 880863  
[sclarkebuilding@outlook.com](mailto:sclarkebuilding@outlook.com)

**Alterations**  
**Extensions**  
**Plastering**  
**Hard-landscaping**  
**Block-paving**  
**General Building Works**  
For free quote or design ideas call Scott



# PARISH COUNCIL NEWS

## PARISH COUNCIL NEWS

*Report of the Parish Council Meeting held on Tuesday, October 4<sup>th</sup> 2016.*

Four Parish Councillors and County Councillor Graham Hart were present.

### Visitors' Questions

■ Queries were raised with County Councillor Hart concerning the poor road markings in general around the village and on Welford Road, in particular. Councillor Hart agreed to raise the matter with Highways.

■ Councillor Hart discussed the proposed revision of constituency boundaries, which may mean that Bosworth would move into a new parliamentary constituency of Daventry & Lutterworth.

### Minutes of last meeting were read and approved

#### Cemetery

■ Council noted that the pathways had been sprayed as requested.

■ It was noted that some work was needed to trim back overgrown yews. Clerk to obtain quotes.

■ Concerns were raised regarding the condition of the paintwork on the roadside railings. Work was carried out last year but in places the paint is already beginning to peel off. Council suggested that the paint may have been incompatible with the original and Clerk was asked to contact the contractor.

#### Playing Field & Play Area

■ Members discussed the quotations received for replacing the fencing on the Pavilion car park and installing a full-width gateway onto the Playing Field adjacent to the Scout Hut. A further quote was expected.

#### Allotments

■ Clerk informed Council that one plot was to be cleared ready for re-letting. One vacated plot had been re-let.

#### Traffic Issues

■ In a report of a recent Welford Action Group meeting Council noted that the group had written to a number of HGV operators that use the Bruntingthorpe site. Four of the major users had acknowledged the traffic problems along the A5199 to the A14 route and had issued their drivers with instructions to use a preferred route along Pincet Lane and the A4304, avoiding Bosworth and Welford.

#### Accounts

■ Monthly accounts were presented and approved.

■ Members discussed a new requirement for regulatory safeguarding of accounting procedures.

#### Planning Issues

■ Concerns were raised about rumours that the doctors' surgery element of the proposed Davidson's development on Welford Road was in question. Clerk was asked to seek clarification from the developer.

#### Correspondence

■ A cemetery capacity study had been called by the local authority. Clerk estimated that, at present, 245 burial of ashes plots and 372 burial plots were available, which would satisfy the parishes requirement for more than 30 years.

#### Any Other Business

■ Council discussed concerns raised by the Leicestershire Association of Parish Councils about the prospect of precept capping for parish councils. At present parish council precepts are not restricted by capping. However, central government is looking at bringing parishes in line with district and county councils, which must restrict any rise in their portions of Council Tax to less than 2%. Councillors were concerned that the extra housing developments proposed for Bosworth and the extra responsibilities being devolved to the parish from County and District should be considered when future precepts were being calculated.

*The next Parish Council meeting will be on Tuesday, November 1st, 2016 at 7.45pm in the Committee Room of the Village Hall. There will be a Precept Meeting on Tuesday, November 15<sup>th</sup> 2016 at 7.45pm in the Committee Room of the Village Hall at which the Parish Precept for 2017-18 will be set.*

## LOCAL OFFICERS

### Husbands Bosworth Parish Council:

#### Councillors

William Fletcher	880910 (Chairman)
Melvyn Forman	880281
Susan Fisher	880026
Patricia Hobson	880070
James Shelley	880170

#### Parish Clerk

Jackie Fletcher,  
13 School Lane,  
H.B. LE17 6JU

Tel: 880910

E-mail: jackiehbpc@btinternet.com

#### District Councillor

Lesley Bowles  
Email: l.bowles@harborough.gov.uk

#### County Councillor

Graham Hart  
Lilac Cottage  
Willoughby Waterleys  
Leicester LE8 6UF

Tel: 01162 478600

E-mail: graham.hart@leics.gov.uk



**DAY CARE for 3 months to 5 years of age**  
*Warm, homely and secure atmosphere.*

*The nursery is part of The Honey Pot Dairy Farm; this countryside setting provides children with limitless outdoor opportunities, creating a huge range of developmental and learning experiences.*

*For a Prospectus or more information please call 01858 881038*

*Visit us at 10 Church Street, HB  
or email: dairyfarmdaynursery@yahoo.com*

**LIFE'S ADVENTURE STARTS HERE**



*Open for Lunch & Evening service  
Serving contemporary British cuisine in a modern  
and relaxed environment*



*Bespoke balcony with panoramic views  
Open Wednesday - Saturday  
12:00noon - 2:30pm & 6:30pm - 9:15pm  
Sunday 12:00noon - 2:30pm*



*(t): 01858 575 555 (e): reservations@theatticrestaurant.co.uk  
(w): www.theatticrestaurant.co.uk*

*South Kilworth Road, North Kilworth, LE17 6HJ*

# CHURCH NEWS

All Saints Parish Church, Methodist Chapel & St. Mary's Roman Catholic Church

## FROM THE RECTORY

When we appreciate the warm reds, oranges and golds of the changing leaf colours set against clear blue skies and autumn sunshine – is that wonder?

When we watch a new born baby, tiny hands reaching out, making gurgling noises, watching you in return, in all its perfection, in its beauty and its determined fight for life, is that awe? When we are grateful for our families and friends, for their companionship and support, for the love we share, is that thanksgiving?

When we recognise, appreciate and are lifted by the many good things that come to us which are outside our control or ownership and yet are ours, the world we live in, the basic goodness in others, is that praise?

When we wish for safety or protection for our loved ones near or far, when we cry out in times of trouble, when we long for an end to fighting and poverty, is that prayer?

When we sense that we are not alone, when peace and assurance settles on our hearts and minds, when joy comes unexpectedly, when we know we are valued and loved – is that the presence of God?

Maybe we are all closer to a life of worship than we think.

Praying you will know awe and wonder, praise and thanksgiving, prayer and presence in your lives each day. *Liz*

## Parish Notices

**Maureen Mary Garner**  
formerly of Glebe Farm  
Died October 2<sup>nd</sup> 2016  
Age 90 years  
**R.I.P.**

## CHRISTMAS FESTIVAL

The Christmas Festival will take place at All Saints Church on Saturday, December 3<sup>rd</sup> and Sunday 4<sup>th</sup> from 10.00am to 5.00pm. The theme for this year is 'Gifts' and anyone can enter an exhibit free of charge from any of the benefice villages. Please contact Lorrie on 880281 or Belinda on 880968 if you would like an entry form. We hope many of you will come and see the wonderful displays in the church (admission is £2.50 with children under 14 free). We have refreshments, music and some competitions including a superb Christmas cake prize. The funds this year will be going to help with re-roofing our south aisle which, at the moment, leaks like a sieve whenever it rains! The festival will end with a service at 5.00pm on Sunday 4<sup>th</sup>. Everyone welcome.

## RICH HARVEST

A big thank you to all the generous donations made for All Saints Harvest Festival, also to the School for all their gifts and the lovely service they organised. We have been able to send 11 large bags to the Lutterworth Food Bank together with £21, which was kindly donated on the Sunday for coffee and cakes after the service. Our gifts will be well-used by many needy families who find themselves in crisis.

## ALL SAINTS FLOWER ROTA

### November:

*Lorrie Forman*

Call Heather O'Connor on 880165 if you would like to join the Flower Rota

## METHODIST CHURCH

### Coffee Morning

Wednesday, November 16<sup>th</sup>  
10.00am-12.00noon.

at the home of John & Margaret Scurrah  
25 High Street  
Visitors always welcome.

## CHURCH SERVICES

### Hexagon Benefice

- |    |  |
|----|--|
| 6  | 9.00am Communion Mowsley with Shearsby<br>9.30am Morning Prayer HB<br>11.00am Communion Thed.<br>11.00am Family Service B'thorpe<br>6.00pm Communion Arnesby |
| 13 | 10.45am Remembrance HB<br>10.45am Remembrance Arnesby Baptist Chapel   |
| 20 | 10.30am Benefice Service Arnesby   |
| 27 | 9.30am Communion Shearsby<br>11.00am Communion Arnesby with B'thorpe<br>5.00pm Promise Keepers HB  |

Short Communion every Wed. 9.15am HB

### Churchwarden:

Diana Jones 880741

### Rector:

Liz Bickley 880351

### Methodist Church

- |    |                                |
|----|--------------------------------|
| 6  | Mr. Gordon Herbert             |
| 13 | Mrs. Jeanne Moore              |
| 20 | Mrs. Kathy Morrison            |
| 27 | 6.00pm Circuit Service at Kib. |

Services every Sunday 6.30pm.  
All Welcome

### Contacts:

Rev. Andrew Murphy 462889

Senior Church Steward:

Mr. A Lloyd Jones 880343

### St Mary's Roman Catholic Church

Services every Sunday 8.30am.

### Contact:

Robert Constable-Maxwell 880361

Father Owen O'Neil 462359

## 'JJ's Kiddycare'



- \*OUTSTANDING\* Ofsted grading
- \* FREE Pre-school sessions for 2, 3 & 4 year olds
- \* Full Day Care 0-5yrs  
Situated on a farm site between South Kilworth and Welford
- \* Breakfast and After School clubs. (4-14years)
- \* Holiday Clubs during all Northants & Leics school breaks

Tel no. 01858 575642  
[www.jjs-kiddycare.co.uk](http://www.jjs-kiddycare.co.uk)



## WOODPECKER TREE SURGERY

All aspects of tree-work undertaken from dismantling large roadside trees to pruning and reshaping small garden trees.

We also offer a stump grinding service.

Professionally qualified and insured.

For free quotation and advice call

Chris on: 01858 880818

[www.woodpeckertrees.com](http://www.woodpeckertrees.com)



## DIARY DATES for NOVEMBER

Tuesday, 1 <sup>st</sup>	Parish Council meeting, 7.45pm Committee Room, Village Hall
Wednesday, 2 <sup>nd</sup>	Historical Society talk: 'The Story of the Unknown Warrior', 7.30pm Church Hall
Friday 11 <sup>th</sup>	Causeway Coffee Morning, 10.00am - 11.30am Church Hall
Tuesday, 15 <sup>th</sup>	Parish Council Precept Meeting, 7.45pm Committee Room, Village Hall
Friday, 18 <sup>th</sup>	Mobile Library
Saturday, 19 <sup>th</sup>	Millennium Wood work party, 9.30am - 12.30pm
Thursday, 24 <sup>th</sup>	Village Lunch, 12.30pm Kilworth Springs Golf Club
Saturday, 26 <sup>th</sup>	FOBS Christmas Event ( <i>See Front Page</i> )

## FORTHCOMING EVENTS

Sat., Dec., 3 <sup>rd</sup> & Sun. 4 <sup>th</sup>	All Saints Christmas Festival
Wed., Dec. 7 <sup>th</sup>	Historical Society Christmas Quiz & Social Evening
Sat., Dec. 17 <sup>th</sup>	Millennium Wood work party ( <i>with festive refreshments!</i> )
Tues., Dec. 20 <sup>th</sup>	Village Lunch Christmas Meal
Sat., January 14 <sup>th</sup> 2017	'Govannen' Celtic music concert, Village Hall
Fri., February 24 <sup>th</sup> 2017	Village Hall Quiz

## LOCAL PLANNING NEWS

The following applications have been submitted to Harborough District Council:

■ 16/01471/OUT COMM/JOR [*Leicestershire County Council*] Outline application for the erection of up to 32 dwellings (access to be considered), land adj Knights Close, Welford Road

### Recently determined applications:

- 16/01004/FUL [*Mr D Hall*] Erect two storey side & rear extension and single storey rear extension, 27 School Lane (*Approved*)
- 16/01181/FUL [*Mrs R Heard*] Erection of a two storey side extension, Hill House, Welford Road (*Approved*)
- 16/01311/TCA [*Mrs Heighton*] Works to trees (fell), 4 Hillcrest Lane (*Approved*)
- 16/01325/TCA [*Mr S Bunn*] Works to trees, 6 Kilworth Road (*Approved*)

Current applications may be inspected during normal working hours at the Council Offices, The Symington Building, Adam & Eve Street, Market Harborough. Comments concerning planning applications should be addressed to the Development Control Manager.

Planning applications and other aspects of local government can now be viewed on-line at [www.harboroughonline.co.uk](http://www.harboroughonline.co.uk)

## MOBILE LIBRARY

### NOTE CHANGES TO SERVICE

The Mobile Library will now be calling on the third Friday of each month.

### STOPS & TIMES

School, Welford Road:	10.35am - 11.35am
Berridges Lane:	11.40am - 12.20pm
Church Street:	12.25pm - 1.00pm

Now lending Talking Books on CD & tape

\*\*\*\*\* You can now renew on-line or by phone \*\*\*\*\*

## BUGLE.....FREE ADS.

Phone Sylvia on 880902 or email: [sylvia1\\_p@hotmail.co.uk](mailto:sylvia1_p@hotmail.co.uk)

### FOR SALE

Bosch dishwasher, full size, 12 place settings. Very clean; hardly used but been stored for a while. Offers of donation to Church funds. Call 880281.

### FOR SALE

Hotpoint Aquarius tumble dryer, good condition and full working order. £30 Telephone: 07813352717



Open to the Public

Golf Course, Driving Range, Tuition

Bar & Restaurant - Open All Day

Event & Conference Facilities

T: 01858 575 082 E: [admin@kilworthsprings.co.uk](mailto:admin@kilworthsprings.co.uk)

W: [www.kilworthsprings.co.uk](http://www.kilworthsprings.co.uk)



# Karting

Leicester Airport, Gartree Rd, Gt Stretton, Leicester. [www.stretton2000.com](http://www.stretton2000.com)

## The UK's Premier Karting experience

850M floodlit racing circuit
Licensed Bar & Function room
Stag & Hen Parties

Corporate & Team Building Activities
Childrens Parties

60 Mph, 300cc Thunder Karts
Kart Club & Championship Races

Junior Kart's Available
Gift Vouchers Available

Arrive & Drive Sessions

## Stretton Circuit 0116 259 2900

Open 7 days a week 10.00am - 9.00pm