

## HAVE YOUR SAY...

**This month we have two very important community issues that we need to focus on.**

Firstly, as a community we need to acquaint ourselves with the workings of the Section 106 community contribution scheme, in which developers are required to 'compensate' communities where they are building new developments. As we noted in last month's *Bugle*, these contributions usually take the form of providing the community with something tangible; such as improvements to existing facilities; the provision of low-cost homes, or, as is hopefully the case in Bosworth, the provision of a new doctors' surgery building. Much of the funding is creamed off at county and district level to provide highway improvements, education and services provision. At parish level, the fund has provided equipment for the play area, improvements to the sports pavilion, bus shelters and seating. However, Section 106 funds are not only restricted to whole-community schemes. Any group or organisation that can demonstrate the need for funding to enhance existing facilities or provide a new community service can apply. Changes in the way that the scheme works will mean that villagers themselves will have a greater say in how any funding is returned to the community.

To this end, the Parish Council is opening the discussion with a public consultation evening of interested parties on Tuesday, December 6<sup>th</sup>, prior to the normal Parish Council meeting. If you have a project that you feel should be considered or have any strong ideas on how the Parish Council should or shouldn't administer the funding, then come along and have your say.

Like it or not, Bosworth, as one of Harborough's Rural Centres, is going to be targeted for development, so we need to ensure that the community gains as much as possible from the process.

\*\*\*\*\*

The second issue that we need to look at closely is Neighbourhood Planning. What is a Neighbourhood Plan? Should the village undertake a Neighbourhood Plan?

A completed Neighbourhood Plan is the community's mandate for the future. It can help to shape future development within the parish. It can determine what sort of development takes place, where it is built and also what the community wants to see protected. It can also influence decisions made about community facilities, employment and transport issues and will reflect local need rather than district-wide priorities.

**The Parish Council is considering undertaking a Neighbourhood Plan but needs the support of the parish to start the process. To start the ball rolling there will be a public meeting on Monday, January 23<sup>rd</sup> 2017, at 7.30pm in the Village Hall led by the Neighbourhood Plan consultancy, *YourLocale*. The meeting will explain what is involved, how much it will cost, the timescale and what the benefits and challenges are for communities that go through the process. Come along and have your say!**

### SIGN LANGUAGE

Our eagle-eyed reader may have noticed new diversionary symbols that have recently been added to the local road signs. The signs are installed to be used when there are problems on the A14/ M1 and M6 principal routes, when road-traffic bulletins (and Sally Traffic?) will direct drivers to follow the appropriate symbol to bypass the incident.

- Directs traffic from A14 Jn1 west via A5199 north & A4304 west to M1
- X Directs traffic from M6 Jn1 south via A426, A5, A4303, A4304 east & A5199 south to A14 Jn1
- Directs traffic from A14 Jn2 west via A508 north, A4304 west & A5199 south to J1 A14

Our observant reader will no doubt note, as Welford residents have, that this means no less than three diversionary routes are funnelled through our villages! Welford Action Group members are challenging some of the assumptions, especially where traffic could reasonably be redirected via more suitable routes and are taking the matter to the Roads and Transport Minister.

ISSUE 244

DECEMBER 2016

### THE BUGLE TEAM

#### Editor:

Melvyn Forman

Firs Fm, Welford Rd.

Tel: 880281

Email: [bosworth\\_bugle@talk21.com](mailto:bosworth_bugle@talk21.com)

#### Treasurer:

Ralph Horton

18 Highcroft

Tel: 880526

#### Advertising:

Sylvia Price

3 Highcroft

Tel: 880902

Email: [sylvia1\\_p@hotmail.co.uk](mailto:sylvia1_p@hotmail.co.uk)

#### Contacts:

Mike Price

3 Highcroft

Tel: 880902

Jo Horton

18 Highcroft.

Tel: 880526

Frances Smith

10 Butt Lane

Tel: 880225

Penny Mattock

9 Fernie Court

Tel: 881140

Heather O'Connor

16 Fernie Court

Tel: 880165

#### Postal Subscription/distribution:

Lorrie Forman

Tel: 880281

Email: [lforman@talk21.com](mailto:lforman@talk21.com)
[www.husbandsbosworth.info](http://www.husbandsbosworth.info)

### COPY DEADLINE

15<sup>th</sup> OF THE MONTH

PRECEDING PUBLICATION



*Volunteers toiling away at the village's community woodland... Why not join one of our monthly workparties? Free work-outs in the open air on offer! See Dairy Dates*

## POSTBAG

*From Chris Price, Mowsley Road*

I mentioned previously my exchange of letters with Severn Trent Water with regard to the parlous water supply service we have experienced in Bosworth in recent months. In a significant letter I had from them there is news that in view of the failure of the previous improvement works to provide a complete solution, they will remove the reliance on pumps by connecting our supply direct to a reservoir. It should be done by December. I have sent further letters mentioning more recent supply failures and reminding them to let me know when we are reservoir-connected.

I have asked for my slice of the poor-service compensation, mentioning that some have had it and others who have been similarly affected have not, and await a reply.

### POLICE FILE

**IF YOU HAVE INFORMATION ON ANY CRIMINAL ACTIVITY CALL MARKET HARBOROUGH POLICE on 101**  
**Neighbourhood Watch Co-ordinator**

**Stephen Bilbie**

stephenbilbie@btinternet.com

NW Community Scheme No. 2123

**Lutterworth South Neighbourhood Team**  
**Sgt. 2241 Mark Williams**

**PCSO 6569 Peter Willson**

**PCSO 6008 Laura Bolton**

**PC 4203 Niké Diaper**

**Voicemail Service 0116 2485675**

**CRIMESTOPPERS**

**FREEPHONE 0800 555111**

## WATCH WORD

*THE NEIGHBOURHOOD WATCH SCHEME WITHIN HUSBANDS BOSWORTH*

### RECENT CRIMINAL ACTIVITY

■ Anti-social and drug-related incident, Playing Field / Pavilion HB

■ Attempted theft of vehicle, Church Street, North Kilworth

■ Burglary to dwelling, The Beeches, Sibbertoft

■ Theft from property, Welland Rise, Sibbertoft

■ Theft of property, Main Street, Theddingworth

■ Burglary to rural premises, Theddingworth Road, Lubenham

■ Theft of property, West Street, Welford

■ Burglary to dwelling, Salford Close, Welford

■ Street crime / robbery, The Leys, Welford

### SID REPORT

Readings from the Speed Indicator Device

**Leicester Road**

Period: 19.10.16 - 26.10.16

Vehicle movements: 7656 Av./day: 1094

Average speed: 28.59mph

*Highest recorded speed: 51mph*

**Leicester Road**

Period: 26.10.16 - 02.11.16

Vehicle movements: 7920 Av./day: 1031

Average speed: 28.69mph

*Highest recorded speed: 50mph*

**Welford Road (out)**

Period: 02.11.16 - 09.11.16

Vehicle movements: 9768 Av./day: 1395

Average speed: 31.95mph

*Highest recorded speed: 67mph*

**Welford Road (out)**

Period: 09.11.16 - 16.11.16

Vehicle movements: 9438 Av./day: 1180

Average speed: 31.88mph

*Highest recorded speed: 59 mph*

### DARK NIGHTS CAMPAIGN

Lutterworth and Market Harborough local policing teams are urging householders to take a few simple precautions to deter opportunist crime at a time of year when home crime tends to increase dramatically. Simple steps can make a massive difference to deterring opportunity crime.

■ Use time-controlled lighting to give the impression that your home is occupied when you are out

■ Don't leave windows ajar for ventilation

■ Put your wheelie-bin behind side or rear entrances when you go to bed

■ Use cheap shed alarms and sensor lights in areas that you can't see easily

■ Park vehicles on your drive to obstruct access

■ If you go away, ask someone to remove post, deliveries, etc from view

*Criminals are getting more and more sophisticated in assessing possible targets and are known to use social media. So, don't advertise the fact that you are away. If the criminal gets a 'tip off' through social media that there is a possibility your home may be unoccupied it's a much less risky prospect for their attention!*

### FATAL 4

Lutterworth Police have been helping the Road Policing Unit in the recent county-wide crack-down on motoring offences in the build-up to Christmas. The *Fatal 4* campaign highlights the four most common causes of injury accidents:

■ Drink Driving

■ Speeding

■ Using a Mobile phone whilst driving

■ Not wearing a seat belt



**Scott Clarke Building**

07725 552566

01858 880863

sclarkebuilding@outlook.com

Alterations

Extensions

Plastering

Hard-landscaping

Block-paving

General Building Works

For free quote or design ideas call Scott



**DIANE E. HALL**

**'THE WHITE HOUSE BEAUTY ROOM'**

\*

**Stockist of Susan Molyneux Skincare**

**\* waxing \* pedicures \* lashes \* exfoliating treatment \***

**Vouchers & Gifts available**

**Tel: 01858 880567 or 07732 571714**

# BOSWORTH IN FOCUS

## MINCE PIE CAKES

With Christmas festivities looming, these little cakes are very easy to prepare and a change from mince pies. Perfect with a glass of mulled wine!

175g self raising flour  
100g light muscovado sugar  
1 tsp mixed spice  
175g softened butter  
3 eggs  
2 tablespoons milk  
140g mincemeat  
Icing sugar

### Method

Heat oven to 190°C/Gas 5. Line 12 bun tins with paper cases. Put flour, sugar, mixed spice, butter, eggs and milk into mixing bowl and beat for 2-3 minutes until the mix is light and fluffy. Put a spoonful of cake mix into each case, then a rounded teaspoon of mincemeat. Cover the mincemeat with another spoonful of cake mixture and smooth over. Bake for 15-18 minutes until golden brown and firm to touch. Dust with icing sugar.

Can be served warm or cold.

Jackie Kerr

## WEATHER LOG

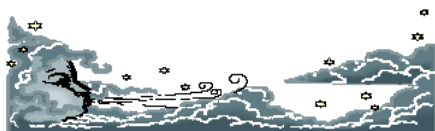
OCTOBER 2016 [2015]

Rain: 29.5mm (1.2") [67mm]

Wettest day: 10.5mm (0.4") [6.5mm]

Highest temp: 16°C [18.5°C]

Lowest Temp: 2.5°C [1°C]



## WILD ABOUT BOSWORTH

### Shaggy Ink Cap - *Coprinus Comatus*

Shaggy Ink Cap or Shaggy Manes, as they are known, are popular mushrooms amongst fungi hunters. The generic name *Coprinus* means 'living on dung,' but this variety thrives on buried dead wood. Its species name, *comatus*, derives from 'coma', the Latin for hair; hence *comatus* meaning hairy or shaggy.

Their white cap is covered with curly scales, which tend to light brown towards their tips. This explains another of its names, 'Lawyer's Wig', which is a nicely descriptive sobriquet, provided the lawyer in question has a very tall, pointy head! Their fruiting season runs from April to November and they appear most often after a good downpour. At the time of writing, early November, they are thin on the ground (pun intended), I suspect because of the recent dry spell.

Due to their edibility and ease of identification, they are popular with foragers. They are said to make a tasty addition to fish, chicken and soup dishes. However, NEVER forget the caveat which is best expressed in the Czech folk saying: "Every mushroom is edible, but some only once..." Unless you are 100% sure of your identification, leave them alone. Only the youngest specimens should be collected. This is because of the shaggies proclivity for auto-digestion. After picking, they rapidly begin to deliquesce or liquefy. Their white gills turn into a black, gloopy, and decidedly unappetising mess.

Lastly, once they've passed their 'use by' date they can make an olive-green dye on suitably absorbent fabrics.

Mike Chanter



## FOXTON HIGHLIGHTS...

Foxton Locks will be hosting an Illuminated Narrowboat Festival on Saturday, December 17<sup>th</sup>, from 3.00pm to 8.00pm. There will be a host of craft stalls, food stalls and a licenced bar as well as a grand fireworks display. The illuminated parade will start at 6.00pm.

The BoilerHouse at Foxton Museum will be open and there will be a lantern-making workshop for children, with the opportunity to take part in the parade.

For more information visit either [www.fipt.org.uk](http://www.fipt.org.uk) or [www.canalrivertrust.org.uk](http://www.canalrivertrust.org.uk)

Penny Arscott

## GOVANNEN

We are now collecting money for the Govannen concert on Saturday, January 14<sup>th</sup>. Will everyone who has booked please let us have payment during December. Just a reminder that the ticket price is £15 to include a pie and pea supper. Thank you.

Ralph Horton

## PEBBLE HALL UPDATE

Steam and pressure commissioning at the Pebble Hall recycling plant will take place in late January for approximately 8 days. This will be a day-time only operation. Noise impacts should be minimal but plumes of steam may be evident, which may concern local residents.

## WOODPECKER TREE SURGERY

All aspects of tree-work undertaken from dismantling large roadside trees to pruning and reshaping small garden trees.

We also offer a stump grinding service.

Professionally qualified and insured.

For free quotation and advice call

Chris on: 01858 880818

[www.woodpeckertrees.com](http://www.woodpeckertrees.com)

## Paul Bolton School of Motoring

Professional Driving Standards Agency Instructor

New Citroen DS3 with dual controls

Flexible pick up & drop off to your requirements

Free sign up for online Theory Test study



Call Text or Email  
01858 880115  
07736 457 986  
[paul\\_bolton@hotmail.com](mailto:paul_bolton@hotmail.com)



# SCHOOL REPORT

**HUSBANDS BOSWORTH C. of E. PRIMARY SCHOOL** Head Teacher Alan Eathorne

With the festive season approaching we have got several events coming up: Carols in the Playground, our Class 1 and 2 performance of 'Baubles', our trip to see 'Jack and the Beanstalk' at De Montfort Hall, All Saints Christmas Festival and Christmas dinners. We had a letter last week from Nick Gibb MP, who is the Minister of State for School Standards. In the letter he congratulated us on 100% of the children achieving the phonics standard last year, putting our school in the 'top 3 per cent of all primary schools in the country'! Reading is a really critical element of what we offer here and so this is fantastic. I would like to thank all the staff and parents for supporting the children with their grasp of phonics and reading.

The closing date for a primary school place for the September 2017 intake is January 15<sup>th</sup> 2017. If you have preschool or school age children and you would like to book an appointment to look around our wonderful school then please ring the office (01858 880212) and we would be more than happy to show you around. We also offer, for current and potential pupils, through Three Bees Child Minding, a before and after school service run by Ami Becker, running from 7.30am until 6pm. If this is something of interest then please ring the school and we can put you in contact with Ami or contact her on 07731356580. Finally, Class 2 have been learning about using verbs and adjectives to create imagery in writing. They have used The Great Fire of London as their inspiration. Here is an example of the brilliant poems they have created.

*Worried, scared people running to their boats.*

*Ferocious flames flick fiercely.*

*Brown, bumpy boats bobbing up and down.*

*Fast carts escaping.*

By Ollie Jacques

## BYGONE BOSWORTH

*Images from the Historical Society's Archive Collection*

You could say that this month's picture is very much 'of its time'! The time, I guess, would be the early 1960s and you can just imagine the 'wide boys' larking around on Leicester Road, strategically positioning the Ford van in front of the Bosworth village sign to make the picture!

Although Ford produced two estate versions of the 300E van; the up-market Squire shooting brake and the more basic Escort, the one pictured appears to be a standard Ford Thames van that has had windows inserted in the side panels.

The scene would be impossible to reproduce today, not least because of today's traffic, but also the imposing red brick building behind the van, The Gables on lower Bell Lane, would be obscured by the later Gables Court development.

The photo is one passed to the Historical Society by former villager, Ivor Dann who, whilst not living here himself at that time, had relatives living in a cottage at the top of Bell Lane who he used to visit.



## ACTIVITY GROUPS 2016

<b>All Saints Parochial Church Council</b>	Contact: Diana Jones 880741
<b>Baby-Sitting Circle</b>	Contact: Claire Scott 880295
<b>Badminton Club</b>	Contact: Ralph Horton 880526
<b>Beaver Scout Troop</b>	Contact: Norman Byrd 07973 532678
<b>Bosworth Tots</b>	Contact: bosworthtots@hotmail.co.uk
<b>Brownie Guides</b>	Contact: Bonny Kettell 882148
<b>Conservative Association</b>	Contact: Robert Maxwell 880361
<b>Craft Group</b>	Contact: Gail Wilmot 880413
<b>Historical Society</b>	Contact: Melvyn Forman 880281
<b>Husbands Bosworth Rainbows Group</b>	Contact: Wendy Cochrane 880076
<b>1st Kilworth Scouts/Beaver unit</b>	Contact: Stuart Dainton 881431
<b>Lutterworth African Drumming Group</b>	Contact: Ralph Horton 880526
<b>Millennium Woodland Trust</b>	Contact: Jackie Fletcher 880910
<b>Playing Field Committee</b>	Contact: Jennifer Rogers 880401
<b>Royal British Legion</b>	Contact: Robert Maxwell 880361
<b>Tennis Club</b>	Contact: Jennifer Rogers 880401
<b>Tower Bell Ringers</b>	Contact: Geoff Armitage 880066
<b>Workers Education Association</b>	Contact: Sally Sherratt 571064



**MILITARY VEHICLE DRIVING AND TANK BATTLES AT**  
**ARMOURGEDDON**

*The UK's only Tank Paintball Battle Venue*

- \*Tank Drive Experiences \* Dads & Lads Experiences\*
- \*Military Vehicle Driving \*Military Vehicle Driving\*
- \*Children's Military Vehicle Party \* Woodland Paintball\*
- \*Archery\*
- \*Air Rifle Shooting\*

Suitable for individuals, Family Fun, Corporate Events  
Stag/Hen Parties

\*\*Gift Vouchers Available\*\*

www.armoureddon.co.uk Tel: 01858 880239

Bookings by Appointment Only



*Open for Lunch & Evening service*  
*Serving contemporary British cuisine in a modern*  
*and relaxed environment*



*Bespoke balcony with panoramic views*  
*Open Wednesday - Saturday*  
*12:00noon-2:30pm & 6:30pm-9:15pm*  
*Sunday 12:00noon - 2:30pm*



(t): 01858 575 555 (e): reservations@theatticrestaurant.co.uk  
(w): www.theatticrestaurant.co.uk

South Kilworth Road, North Kilworth, LE17 6HJ

## TRADE DIRECTORY 2016

**Armourgeddon Tank Paintballing Centre**  
Military vehicles, paintball & outdoor activities  
Contact: Tracey 01858 880239  
**Croft Farm Bed & Breakfast**  
AA 4\*\*\*\* accommodation  
Contact: Jane Smith 880679  
**Mike Price Heating Engineer**  
Oil-fired boiler servicing & repair  
Contact: Mike Price 880902  
**Totally Trees Ltd.**  
Tree surgery and stump grinding  
Contact: Jacqui Mitchell 01455 554182  
**Woodpecker Tree Surgery**  
All aspects of tree surgery undertaken  
Contact: Chris Wright 880818

## TENNIS CLUB

**Important notice for almembers of Husbands Bosworth Tennis Club.**

### Wimbledon Ticket Draw

Would every member please opt in to the Lawn Tennis Association ballot for Wimbledon 2017 tickets as our club tickets are allocated on the number of members who apply. You don't have to want tickets yourselves but it gives the club more tickets to share.

To opt in you need to go online with your LTA membership number and log into the LTA Wimbledon ballot. The user name is **husbands42** and you will have your own password. If you have a problem you can ring the LTA at Loughborough on 01509 226722.

For more information please call Jennifer Rogers 880401 or Mike Pennington 880455.

## BOSWORTH TOTS

Bosworth Tots is a stay-and-play session for tots (from birth to pre-school) and their parents, grandparents, carers and child minders.

The group meets from 9.30am to 11.30am (term time only) on Thursday mornings at Husbands Bosworth Village Hall.

The cost is £2.50 for one child and then 50p for every additional child after that.

For more details email: [bosworthtots@hotmail.co.uk](mailto:bosworthtots@hotmail.co.uk)

## ACTIVITY GROUPS

### HISTORICAL SOCIETY

The next meeting of the Historical Society will be on Wednesday, December 7<sup>th</sup> at 7.30pm in the Church Hall, Honeypt Lane, when we will be holding our Annual Quiz & Social Evening. This year's quiz will be set by Janice and David and their erstwhile quizzers, Chris and Sylvia Price.

As usual we will be inviting members and friends to join us for the bring and share buffet evening. A glass of wine, Heather's famous Winter Pimms and soft drinks will be provided. A £2.50 door charge is requested from non-members.

\*\*\*\*\*

The Historical Society Archive holds a vast collection of photographs of the community, made mostly by villagers and dating back over 150 years. Many show the changing face of the village, some even show the village face in the process of changing!

Many pictures were taken by members in the early days of the Historical Society in the 1970s and 1980s, to record the village as it was at that time and are now of great interest showing the changes that have occurred since.

With so much happening locally these days and with photographs so easy to make, store and pass on we are now asking villagers to record the village as it is today - *The Bosworth Today Project* - preserving Bosworth's past, for the future...

If you would like to participate the easiest way is to email images as attachments to Melvyn ([m.forman@talk21.com](mailto:m.forman@talk21.com)).

### CRAFT GROUP

The Craft Group meets on the second Wednesday of each month at 7.30pm in the Committee Room of the Village Hall.

If you have a pastime or hobby that is reasonably portable and would relish the chance to escape the distractions of homelife for a while, why not come along? Meetings are freindly and informal and there is no subscription apart from a small charge to cover hall hire fees.

Call Gail on 880413 for more information.

### VILLAGE LUNCH

The next Village Lunch will be the special Christmas Meal on Tuesday, December 20<sup>th</sup> at Kilworth Springs Golf Club.

Share the joys of the festive season with old and new friends in a warm, relaxing and friendly atmosphere, whilst enjoying the 'Springs' finely-crafted traditional festive fare!

The cost of the two-course meal, including festive trimmings, coffee and mincepies is only £11.00 per person.

If you haven't already booked a place or for more information please call Janice on 880668.

### ART CLASSIC

Welford Watercolourists would like to thank all those who supported our recent exhibition and sale of works.

As a result of sales of works, teas, catalogues and raffle we have been able to send £200 to each of this year's chosen charities - Leicestershire Air Ambulance and Headway, the head and brain injuries charity.

### VILLAGE HALL BOOKINGS

**Roni Jones 07442 954729**

[husbandsbosworthvh@gmail.com](mailto:husbandsbosworthvh@gmail.com)

[www.husbandsbosworthvillagehall.co.uk](http://www.husbandsbosworthvillagehall.co.uk)

### CHURCH HALL BOOKINGS

**Janice Staples 880668**

**Bob Hutchings 880131**

### SPORTS PAVILION ENQUIRIES

**Audrey Marlow 880316**

## COMPLETE CAR CARE

Accident repair specialist

Bodywork, dent, scratch and stone-chip repair

Servicing, alloy refurbishment, welding

MoT repair

Valeting, full body polish

Parking sensors, tyres & exhausts, etc. fitted

Call Ben on 01858 880404

[bencompletotecarcare@outlook.com](mailto:bencompletotecarcare@outlook.com)

 **Kilworth Springs**  
**PREMIER GOLF CLUB**

**Open to the Public**

**Golf Course, Driving Range, Tuition**

**Bar & Restaurant - Open All Day**

**Event & Conference Facilities**

**T: 01858 575 082 E: [admin@kilworthsprings.co.uk](mailto:admin@kilworthsprings.co.uk)**

**W: [www.kilworthsprings.co.uk](http://www.kilworthsprings.co.uk)**



# PARISH COUNCIL NEWS

*Report of the Parish Council Meeting held on Tuesday, November 1<sup>st</sup> 2016.*

Four Parish Councillors, District Councillor Lesley Bowles, County Councillor Graham Hart and one member of the public were present.

## Visitors' Questions

■ A resident asked if any progress had been made regarding upgrading the canal towpath. Clerk reported that nothing had been heard and would follow this up. Clerk was also asked to voice concerns about the condition of Honeypot Farm Bridge, where water flowing down Broad Lane is permeating the structure. Clerk asked to copy this to Highways and Councillor Hart.

■ Concerns were raised about rumours that the new doctors' surgery was not going to be built. Clerk was still awaiting a reply from the developers from a previous query on the matter. A general discussion regarding local health care followed.

■ Councillor Bowles drew Council's attention to the proposed Constituency Boundary Review, noting that Harborough District Council had reservations about the proposal. Councillor Hart gave a report of the current LCC cost-saving initiatives, including the switch to LED lighting programme across the county and the maintenance of adult and child care services.

## Minutes of last meeting were read and approved

### Matters Arising

- A shed and greenhouse left by a previous allotment tenant would be left for a future tenant.
- Work to rectify the incompatible paint on the cemetery front railings would be carried out in the spring.
- It was suggested that the Planning Officer responsible for the proposed development on Welford Road be asked to clarify the position regarding the doctors' surgery.

### Cemetery

- Council agreed to arrange for the yew trees overgrowing the footpaths to be trimmed back.
- Some finishing work was still required on the Chapel of Rest south doors and dislodged roof tiles. Clerk to follow this up.

### Playing Field & Play Area

■ A report by the Chairman outlined a proposal that Council should take over the financial and maintenance responsibility for the Sports Pavilion. Representatives of the playing field users would be invited to report directly to Council.

### Allotments

- Clerk informed Council that one plot was vacant, with immediate access. A second plot would need clearing before letting in the spring.

### Neighbourhood Plan

■ After some discussion it was agreed that Council should proceed with preliminary plans to commission a Neighbourhood Plan. An open meeting to put the proposal before the community would be held in the new year. *[Editor's Note: See article on Front Page]*

### Accounts

- Monthly accounts were presented and approved.

### Any Other Business

■ The Chairman agreed to call a meeting of interested groups with a view to discussing local projects that could be considered for Section 106 developer contribution funding. The meeting was arranged for Tuesday, December 6<sup>th</sup>, prior to the Parish Council meeting, at 7.00pm in the Village Hall.

■ It was agreed to move the start times of Council meetings, from the February meeting, to 7.30pm now that the Brownie group is meeting at the Church Hall.

*The next meeting will be in the Committee Room of the Village Hall on Tuesday, December 6<sup>th</sup>, 2016, starting at 7.00pm with the Section 106 meeting, followed by the Parish Council meeting at 7.45pm.*

**NOTE: THERE WILL BE NO PARISH COUNCIL MEETING IN JANUARY.**

## LOCAL OFFICERS

### Husbands Bosworth Parish Council:

#### Councillors

William Fletcher	880910 (Chairman)
Melvyn Forman	880281
Susan Fisher	880026
Patricia Hobson	880070
James Shelley	880170

#### Parish Clerk

Jackie Fletcher,  
13 School Lane,  
H.B. LE17 6JU

Tel: 880910

E-mail: jackiehbpc@btinternet.com

#### District Councillor

Lesley Bowles

Email: l.bowles@harborough.gov.uk

#### County Councillor

Graham Hart

Lilac Cottage

Willoughby Waterleys

Leicester LE8 6UF

Tel: 01162 478600

E-mail: graham.hart@leics.gov.uk

# Karting

Leicester Airport, Gartree Rd, Gt Stretton, Leicester. [www.stretton2000.com](http://www.stretton2000.com)

## The UK's Premier Karting experience

- 850M floodlit racing circuit
- Licensed Bar & Function room
- Stag & Hen Parties
- Corporate & Team Building Activities
- Childrens Parties
- 60 Mph, 300cc Thunder Karts
- Kart Club & Championship Races
- Junior Kart's Available
- Gift Vouchers Available
- Arrive & Drive Sessions

### Stretton Circuit 0116 259 2900

Open 7 days a week 10.00am - 9.00pm



**DAY CARE** for 3 months to 5 years of age  
*Warm, homely and secure atmosphere.*

*The nursery is part of The Honeypot Dairy Farm; this countryside setting provides children with limitless outdoor opportunities, creating a huge range of developmental and learning experiences.*

*For a Prospectus or more information please call 01858 881038*

*Visit us at 10 Church Street, HB  
or email: [dairyfarmdaynursery@yahoo.com](mailto:dairyfarmdaynursery@yahoo.com)*

**LIFE'S ADVENTURE STARTS HERE**



# CHURCH NEWS

All Saints Parish Church, Methodist Chapel & St. Mary's Roman Catholic Church

## FROM THE RECTORY

Those of you who have been preparing for the Christmas Festival will already know that the theme for this year is that of 'Gifts'. Gifts are an intrinsic part of Christmas - the nativity story has gift giving when the Wise Men come to pay homage from foreign lands bearing their gifts of gold, frankincense and myrrh. Of course, there is also the first gift of all - of God giving Jesus to become one of us - the act of love which triggers the whole occasion. We will no doubt all be caught up at this time in the process of deciding what gifts we will give this Christmas to family and friends and where we are able to give we will be glad that we are in a position to do so. Let's hope we don't get caught in the trap of getting into debt for Christmas, feeling the pressure to meet expectations, real or imagined, beyond our means. Let's give gifts with love, and cherish what we receive for the love and friendship they represent rather than the price paid for them.

If any of you are in a position to do so, and would like to, there is an opportunity to give a gift for someone who will receive little this Christmas. At our Christmas Festival on December 3<sup>rd</sup> and 4<sup>th</sup> there will be a basket in which to place a wrapped gift that will then be given, through the Salvation Army network of contacts, to someone who will not receive much this Christmas. Some will be those who are gathered to their Christmas Day meal who would otherwise be on their own, plus others in need with whom they have contact. They ask that each present is labelled with what the content is, so they can give the gifts appropriately, so please indicate whether for man, woman or child, and what age, and a brief note of what it is.

May you know the blessing of God's gifts of love and joy this Christmas time. Liz

## POPPY APPEAL

The collection made in church at the Remembrance Day Service amounted to £215.41, which has been divided equally between the local Royal British Legion Poppy Appeal and the on-going work of All Saints Church.

It was pleasing to see so many villagers, especially younger members of the community, in the sunshine outside church to remember the men of Bosworth who have given their lives and who are named on the village War Memorial.

## ALL SAINTS CHRISTMAS FESTIVAL

Don't miss the Christmas Festival - festive illuminations, decorated trees, competitions, seasonal music and refreshments in church over the weekend of Saturday, December 3<sup>rd</sup> and Sunday 4<sup>th</sup> 10.00am to 5.00pm. The weekend will conclude with a special service at 5.00pm on Sunday.

Admission £2.50, children under 14 free.

## FOOD BANK

Collections made for the Lutterworth Foodbank during the Harvest Festival period in the benefice churches amounted to 7.8kgs. For details on what foods are suitable please call Rev. Liz on 880351.

## ALL SAINTS FLOWER ROTA

### December:

Heather O'Connor

Call Heather O'Connor on 880165 if you would like to join the Flower Rota

## METHODIST CHURCH

### Coffee Morning

Wednesday, December 14<sup>th</sup> 10.00am-12.00noon. (Note: second Wed.)  
at the home of John & Margaret Scurrah  
25 High Street  
Visitors always welcome.

Christmas Greetings to all

Bugle readers!

## CHURCH SERVICES

### Hexagon Benefice

- |    |  |
|----|--|
| 4  | 9.00am Holy Communion<br>Mowsley with Shearsby<br>11.00am Holy Communion Thedd.<br>4.00pm Christingle B'thorpe<br>5.00pm Advent Service HB   |
| 11 | 6.00pm Holy Communion Arnesby<br>9.30am Holy Communion Shearsby<br>9.30am Morning Prayer Arnesby<br>11.00am Holy Communion HB<br>4.00pm Carol Service Thedd.<br>6.00pm Carol Service B'thorpe<br>6.00pm Evening Prayer Mowsley |
| 18 | 10.30am Benefice Comm. B'thorpe<br>5.00pm Carol Service HB<br>6.00pm Carol Service Arnesby<br>6.00pm Carol Service Shearsby  |
| 20 | 7.00pm Carol Service Mowsley   |
| 24 | 5.00pm Crib Service Arnesby<br>5.00pm Crib Service HB<br>11.15pm Communion Mowsley<br>11.15pm Communion Shearsby   |
| 25 | 10.30am Benefice Comm. HB  |

Short Communion every Wed. 9.15am HB

Churchwarden:

Diana Jones 880741

Rector:

Liz Bickley 880351

### Methodist Church

- |    |   |
|----|---|
| 4  | Mrs. Christine Hodgson                                      |
| 11 | Rev. Andrew Murphy (Com.)                                   |
| 18 | Carol Service with Mrs Jeanne<br>Moore & Rev. Andrew Murphy |
| 25 | No service  |

Services every Sunday 6.30pm.

All Welcome

Contacts:

Rev. Andrew Murphy 462889

Senior Church Steward:

Mr. A Lloyd Jones 880343

### St Mary's Roman Catholic Church

Services every Sunday 8.30am.

Contact:

Robert Constable-Maxwell 880361

Father Owen O'Neil 462359

ROB DARGUE  
CARPENTRY & BUILDING Ltd.  
Husbands Bosworth



ALL ASPECTS OF CARPENTRY & BUILDING WORK  
EXTENSIONS & ALTERATIONS  
KITCHENS, BATHROOMS & TILING

Friendly, reliable service

For a free quotation call Rob  
01858 880803 or 07834 872205

[www.robarguecarpentry.co.uk](http://www.robarguecarpentry.co.uk)



## 'JJ's Kiddycare'



- \*OUTSTANDING\* Ofsted grading
- \* FREE Pre-school sessions for 2, 3 & 4 year olds
- \* Full Day Care 0-5yrs  
Situated on a farm site between South Kilworth and Welford
- \* Breakfast and After School clubs. (4-14years)
- \* Holiday Clubs during all Northants & Leics school breaks

Tel no. 01858 575642

[www.jjs-kiddycare.co.uk](http://www.jjs-kiddycare.co.uk)



## DIARY DATES for DECEMBER

Saturday 3<sup>rd</sup> & Sunday 4<sup>th</sup>  
 Tuesday 6<sup>th</sup>  
 Tuesday 6<sup>th</sup>  
 Wednesday 7<sup>th</sup>  
 Friday 9<sup>th</sup>  
 Friday 16<sup>th</sup>  
 Saturday 17<sup>th</sup>  
 Tuesday 20<sup>th</sup>

All Saints Christmas Festival 10.00am - 5.00pm  
 Parish Council Section 106 meeting 7.00pm Committee Room, Village Hall  
 Parish Council meeting, 7.45pm Committee Room, Village Hall  
 Historical Society Christmas Quiz & Social Evening, 7.30pm Church Hall  
 Causeway Christmas Meal, Ullesthorpe Court, leave village 11.30am  
 Mobile library  
 Millennium Wood work party (with festive refreshments!) 9.30am - 12.30pm  
 Village Lunch Christmas Meal, 12.30pm Kilworth Springs Golf Club.

## FORTHCOMING EVENTS

Wed., January 4<sup>th</sup> 2017  
 Fri., January 6<sup>th</sup>  
 Fri., January 13<sup>th</sup>  
 Sat., January 14<sup>th</sup>  
 Sat., January 21<sup>st</sup>  
 Mon., January 23<sup>rd</sup>  
 Wed., January 25<sup>th</sup>  
 Fri., February 24<sup>th</sup>  
 Fri., March 10<sup>th</sup>

Historical Society talk on the work of the RNLI and a daring sea rescue in 1914  
 All Saints Church Clean-up & Tree Removal  
 Causeway Coffee Morning  
 'Govannen' Celtic music concert  
 Millennium Wood workparty  
 Neighbourhood Plan meeting  
 Village Lunch  
 Village Hall Quiz  
 Sally Barker in the Village Hall

### LOCAL PLANNING NEWS

**The following applications have been submitted to Harborough District Council:**

- 16/01516/PDN [Dr Sally Harris] Prior approval for proposed change of use of agric. building to a dwelling & associated development, Barchill Farm, Welford Road
- 16/01541/FUL [Mr Andrew Smelt] Erection of a first floor extn. & internal alterations, Meadow House, Leicester Road
- 16/01778/LBC [Ms C Gilbert] Erect new rear gateway through garden wall, 26 Berridges Lane
- 16/01786/FUL DEL/CBR [Mr Harry Leak] Demolish exist. 2 storey rear extn. & conservatory and erect. 2 storey rear extn. and single storey link to part converted garage, 17 Church Lane

**Recently determined applications:**

- 16/01183/PCD [Mr & Mrs I Hall] Discharge of conditions of 15/01329/FUL, Land adj. 19 Berridges Lane (*Approved*)
  - 16/01468/TCA [Husbands Bosworth Parish Council] Works to trees, Village Green, High Street & The Green off Church Lane (*Approved*)
- Current applications may be inspected during normal working hours at the Council Offices, The Symington Building, Adam & Eve Street, Market Harborough. Comments concerning planning applications should be addressed to the Development Control Manager.*
- Planning applications and other aspects of local government can now be viewed on-line at [www.harboroughonline.co.uk](http://www.harboroughonline.co.uk)**

### MOBILE LIBRARY

#### NOTE CHANGES TO SERVICE

*The Mobile Library will now be calling on the third Friday of each month.*

#### STOPS & TIMES

School, Welford Road:     **10.35am - 11.35am**  
 Berridges Lane:           **11.40am - 12.20pm**  
 Church Street:            **12.25pm - 1.00pm**

**Now lending Talking Books on CD & tape**

\*\*\*\*\* You can now renew on-line or by phone \*\*\*\*\*

### BUGLE.....FREE ADS.

Phone Sylvia on 880902 or email: [sylvia1\\_p@hotmail.co.uk](mailto:sylvia1_p@hotmail.co.uk)

#### WANTED

**Local businessman seeks small house with garden to rent.**  
**Please call 01858 881350 or 07947705453. Good references available upon request.**

**FREE** Large quantity of plastic spiral tree guards. Call 880281

WEDDINGS • PARTIES • CORPORATE



*Lodge Farm*

LUXURY TOILET HIRE

**01858 882176**

[www.lodgefarmluxurytoilethire.co.uk](http://www.lodgefarmluxurytoilethire.co.uk)

*A Luxury Loo for your Posh Do!*



**P.C. BUILDING SERVICES LTD**

Established  
27 years



Complete building service  
 Specialist in new build  
 Quality renovations  
 & Extensions

**Tel/Fax 01858 881202**

**Email: [pcbuidserv@btinternet.com](mailto:pcbuidserv@btinternet.com)**

Walton Grange, Bosworth Road  
 Walton, Lutterworth, Leics LE17 5RW