

## COMMUNITY FUND

**It was disappointing that only a handful of villagers and representatives of village groups came along to the £106 funding meeting last month. Perhaps the message is still not entirely clear that funding generated by new housing developments within the parish is up for grabs.**

Money is available, with few strings attached, for any group that can demonstrate the provision of a facility or service that will benefit the wider community. Particularly relevant would be projects that would extend or provide education, sport, recreation or healthy lifestyle facilities or the provision of community infrastructure. In simple terms, the money is there - it's up to the community to decide where it is used...

If you're not aligned to any community group yourself, you may have ideas that could be carried forward by a village group or the parish council. Come along to the next meeting on Tuesday, March 7<sup>th</sup> at 7.00pm in the Village Hall, and have your say!

### MEDICAL TREATS

The new Treatment Centre, to extend the work of the Market Harborough Medical Centre and replace the Coventry Road Cottage Hospital, will be opening its doors at the Leicester Road site on Tuesday, March 7<sup>th</sup>. A branch surgery of the Medical Centre will be providing general practice facilities, alongside the nurse-led minor illness unit, which will be catering for common ailments.

At the same time the Cottage Hospital will close and treatment for minor injuries, including limb fractures, sprains/sports injuries, cuts and grazes, animal and insect bites, whiplash injuries and dislocations, burns and scalds, foreign bodies in eyes and minor head injuries will transfer to the new site, as a walk-in service.

For us in Husbands Bosworth little will change, at least for the time being, and patients will continue to use the village surgery as normal. However, out-of-hours and minor injury cover will now be focused on the St. Luke's Treatment Centre.

#### Opening hours at the Treatment Centre are....

Minor illness: *Monday to Friday (8.30am - 5.30pm)*

Minor injuries: *Monday to Friday (8.30am - 5.00pm)*

Out-of Hours Service: *5.00pm - 9.00pm, Monday to Friday  
9.00am - 7.00pm Saturdays and Sundays*

General Practice: *Monday to Friday 8.30am to 5.30pm*

**For all enquiries ring 01858 464242**

### QUARRY

Tarmac, the operators of Husbands Bosworth Quarry are seeking permission to extend the landfill programme for the quarry to accommodate over 1m tonnes of inert waste over the next 10 -12 years. The proposal is to withdraw plant as the present aggregate supply diminishes and back-fill the voids with landfill waste. Infill is anticipated to continue at current rates of input, which are approximately 120,000 tonnes of material per annum, equating to approximately 165 HGV loads per week.

Access and the route of vehicles to and from the site would continue as at present and infill to the Butt Lane site would be by dump truck. Suitable arrangements will be made for the crossing over Butt Lane to operate safely and effectively.

A detailed design for restoration of the whole site, which will include restoration to agriculture, woodland, grassland and water bodies, will be submitted at the cessation of workings.

### THANKS...

This month we say goodbye and a big thank-you to Lorrie Forman, one of the original 'Gang of Seven' that launched the *Bugle* onto an unsuspecting public back in 1996. Over the years Lorrie's keen eye has helped to guide the *Bugle* over the rocky ground of misspellings, errant punctuation and faulty grammar and her swingeing use of the dreaded 'red pen' will be sorely missed by the editorial team.

### BOSWORTH FESTIVAL 2017

#### A date for your diaries!

Bosworth Festival will be on Saturday, June 24<sup>th</sup> in the grounds of Bosworth Hall. Gates will open for stall-holders and setting up from 9.00am; open to the public from 10.30am. A grand day out for all the family is in prospect, with classic and vintage cars, VW Owners Club meet, fun fair, games, militaria and collectables, live entertainment, trade, charity and craft stalls.

The day carries through into the evening when the fun moves onto the Hall lawn for Music in the Park until 11.00pm. Bring a picnic, pull up an easy chair and relax at the end of the day to live music.

Bookings for stall-space are now being taken. Call Jackie on 880910, email: [jackiehbpc@btinternet.com](mailto:jackiehbpc@btinternet.com) for a booking form or go to [www.husbandsbosworth.info/bosworth-festival](http://www.husbandsbosworth.info/bosworth-festival) to download a form. *Find us on Facebook!*



**FOBS Easter Trail & Treasure Hunt**  
**Sunday 2nd April**

FOBS are looking for villagers who are willing to decorate a window or front garden, to create an Easter scene or scene from a children's story, for our Easter Trail and Treasure Hunt. If you would like to participate, please email or let Abby Ascough [Absclarke@aol.com](mailto:Absclarke@aol.com) know before 12th March so we can include it in our trail guide.

Start the hunt and trail between **10.30 - 11am** from the **Village Hall**. Return to the hall for refreshments from 12pm. Event finishes at 2pm. Fun for all ages!

Thank you for supporting our school.

## BUGLE POSTBAG

*From Chris Price, Mowsley Road*

I hope that the appearance of my letter in the February *Bugle* did not inadvertently trigger the water supply failure at the end of January! Anyway, following that, I had another call from the network manager at Severn Trent.

Firstly, they will reconnect our supply to a reliable one that is not reliant on the pumps in the village, albeit it will not deliver the full pressure without the assistance of those pumps, which will be 'booster pumps' rather than 'supply pumps' as they have been. Secondly, the pumps in the village, which have been 'tripping-out' to cause our supply failures have had to be re-started by a Severn Trent operative coming to the village to press the buttons. They will install new equipment that will allow them to be re-started remotely from the Control Room in Coventry. Electricity supply failures in the village, even brief ones, cause the pumps to trip out and Severn Trent assume that this is likely to happen again in future. However, if the pumps can be re-started quickly, from the Control Room, we will only experience a few minutes of lower pressure, rather than several hours.

*From Jessica Forth, High Street*

Nicci Bay is my amazing friend from school. In February 2006 her husband, Glen, was diagnosed with a rare type of lymphoma. They have a 14 year old daughter, Tiyana, who has lived most of her life with a very poorly daddy. Treatment options in the UK have now been exhausted and Glen's last chance is costly immunotherapy in Germany. I'm asking my friends to go to Nicci's funding page at: <https://www.gofundme.com/glens-cancer-fund> and read the full story... and hopefully make a donation, however small to help to keep this family together. Thank you.

## POLICE FILE

### NEIGHBOURHOOD WATCH

We have had reports overnight of vehicles being stolen by means of keys in the ignition. We advise that you never leave keys in an unattended car whatever the weather. Your insurance company may NOT pay out.

Also, when you lock your car using your key fob, take a moment to make sure the car is locked. There are devices out there that will disrupt the signal stopping the car locks working. If it is frosty in the morning, take a look around for any strangers loitering around, they may be on the lookout for that one car with the engine running and no driver. By reducing opportunity we can reduce crime.

### SPEED AWARENESS

The police speed safety camera van will be operating locally on the following dates:

March: 10<sup>th</sup> & 28<sup>th</sup>

April: 6<sup>th</sup> & 24<sup>th</sup>

*(All dates subject to change)*

Along with speeding we will be looking out for other traffic offences including using a mobile phone whilst driving. Remember that from March 1<sup>st</sup> the fine will rise to £200 and six points on your licence. Young, new drivers or those with existing points, be aware!

## THE BUGLE TEAM

**Editor:**

**Melvyn Forman**

**10 Church Lane**

**Tel: 880281**

**Email: [bosworth\\_bugle@talk21.com](mailto:bosworth_bugle@talk21.com)**

**Treasurer & Advertising:**

**Ralph Horton**

**18 Highcroft**

**Tel: 880526**

**Contacts:**

**Mike & Sylvia Price**

**3 Highcroft**

**Tel: 880902**

**Jo Horton**

**18 Highcroft.**

**Tel: 880526**

**Frances Smith**

**10 Butt Lane**

**Tel: 880225**

**Penny Mattock**

**9 Fernie Court**

**Tel: 881140**

**Heather O'Connor**

**16 Fernie Court**

**Tel: 880165**

**Postal Subscription & distribution:**

**Melvyn Forman**

**Tel: 880281**

**Email: [bosworth\\_bugle@talk21.com](mailto:bosworth_bugle@talk21.com)**

**[www.husbandsbosworth.info](http://www.husbandsbosworth.info)**

**COPY DEADLINE  
15<sup>th</sup> OF THE MONTH  
PRECEDING PUBLICATION**

## POLICE FILE

**IF YOU HAVE INFORMATION ON ANY  
CRIMINAL ACTIVITY CALL MARKET  
HARBOROUGH POLICE on 101**

**Neighbourhood Watch Co-ordinator**

**Stephen Bilbie**

**[stephenbilbie@btinternet.com](mailto:stephenbilbie@btinternet.com)**

**NW Community Scheme No. 2123**

**Lutterworth South Neighbourhood Team**

**Sgt. 2241 Mark Williams**

**PCSO 6569 Peter Willson**

**PCSO 6008 Laura Bolton**

**PC 4203 Niké Diaper**

**Voicemail Service 0116 2485675**

**CRIMESTOPPERS**

**FREEPHONE 0800 555111**

## COMPLETE CAR CARE

Accident repair specialist

Bodywork, dent, scratch and stone-chip repair

Servicing, alloy refurbishment, welding

MoT repair

Valeting, full body polish

Parking sensors, tyres & exhausts, etc. fitted

Call Ben on 01858 880404

**[bencompletotecarcare@outlook.com](mailto:bencompletotecarcare@outlook.com)**

## Springfields



**HIGH STREET  
HUSBANDS BOSWORTH**

**Opening times:**  
**6.00am - 10.00pm**  
**7 days a week**  
**FREE to use Cash**  
**Dispenser**  
**\*\*\*\*\***  
**National Lottery**



# BOSWORTH IN FOCUS

## A TASTE OF BOSWORTH

### Mushroom & Taleggio Tarts

Easy to make pastry tarts - the pastry rises up around the filling forming a neat case. Perfect for a lunch with friends, served with a green salad.

450g ready-made puff pastry

Plain flour, for dusting

5 tbsp. olive oil, plus extra for brushing

700g red onions, thinly sliced

250g chestnut mushrooms, sliced

25g pine nuts

1 tbsp. chopped fresh oregano or thyme

Salt & pepper

100g Taleggio cheese, sliced

### Method

Roll out pastry on a floured surface and cut out 4 x 12.5 cm (5 inch) squares. Chill for 30 mins. Place 2 baking sheets in the oven and preheat the oven to 220°C/Gas 7. Meanwhile, heat 3 tablespoons of the oil in a frying pan. Add the onions and cook gently for 30 mins. until caramelised. Remove from pan and cool. Heat the remaining oil in the frying pan. Add the mushrooms and cook over a high heat until soft and the liquid has evaporated. Leave to cool, then stir into the onions. Mix in the pine kernels, oregano and salt and pepper. Place the chilled pastry squares on the baking sheets. Prick the pastry squares with a fork and brush with oil. Divide the mushroom mixture between them, leaving a 1cm (½") margin which has been gently marked out with the back of a knife. Arrange the cheese on top. Bake for 15 mins. until the pastry is golden and risen, and the cheese has melted.

Jackie Kerr

## SULBY GARDENS SPRINGWATCH 2017

Sulby Gardens will be opening its gates for the first time this year on Thursday, April 27<sup>th</sup>, 2.00pm to 5.00pm.

Come and see the amazing snakeshead fritillaries and cowslips with, hopefully, a carpet of bluebells in the spinney as well!

Homemade refreshments, Sulby Gardens Apple Juice and home grown plants while stocks last. Entry £4 per head

Alison Lowe

## WILD ABOUT BOSWORTH

### Rook - *Corvus Frugilegus*

*Corvus Frugilegus* translates to 'food-gathering raven' and 'rook' derives from the bird's raucous call. Of course, it has nothing to do with the chess piece which, as I'm sure you all know, comes from 'ruk' the ancient Persian for chariot...

Males and females form a lifelong pair bond and both birds work to construct

their penthouse in the rookery. The nest of twigs is bound with earth and lined with soft material. They prefer to break off fresh twigs, rather than picking them up off the ground or, given the chance, they will steal them from a neighbour! Eggs are laid in early March and incubation takes around 18 days. The chicks fledge about a month later.

So, is it a rook or a crow? There's a farmers' adage which goes: 'A rook on its own is a crow; a crow in a crowd is a rook.' Rooks are far more gregarious than crows and a flock of corvids in a field will surely be rooks (a parliament of rooks), with a possible sprinkling of jackdaws. In close-up, rooks have a patch of bare white skin between beak and eye and fetching feathery pantaloons.

They are omnivorous and they will happily consume invertebrates (predominantly earthworms), seeds, root crops, fruit and carrion. To farmers, they can be friend and foe: foe when they tuck into newly-sown seed and friend when they break up cow pats as they hunt for dung grubs.

Mike Chanter

(Photo by John Harding kindly supplied by the British Trust for Ornithology [BTO]).

Through the efforts of BTO volunteers, bird populations have been monitored for many years and this has produced a uniquely rich and detailed body of scientific work. To find out more go to [www.bto.org](http://www.bto.org)



## WEATHER LOG

### JANUARY 2017

Rain: 60mm (2.4")

[2016]

[84.5mm]

Wettest day: 8.5mm

[12mm]

Highest temp: 9°C

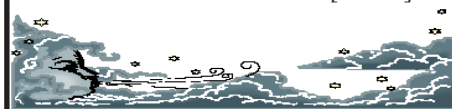
[12°C]

Lowest Temp: -4°C

[-3°C]

Snow: 12mm

[65mm]



## FOXTON FESTIVAL

This year's Foxton Locks Festival will be on Saturday 17<sup>th</sup> & Sunday 18<sup>th</sup> June.

The festival goes from strength to strength with a busy show arena, food and drinks village, craft marquee and a host of historic and trading boats. Family entertainment. £7 per adult, accompanied children under 16 free. [www.foxtonlocksfestival.co.uk](http://www.foxtonlocksfestival.co.uk)

Ian McDonald

## DOG WATCH

Harborough District Council have agreed additional funding for dog fouling enforcement, to include evenings and weekends to target irresponsible dog walkers who are not picking up after their pets, as well as dealing with nuisance pets. Failure to comply would result in a fine of £100, or £1,000 if prosecuted.

A Dog Watch Scheme will also be explored, with volunteers serving as the 'eyes and ears on the streets' to help crackdown on persistent offenders.



## Kilworth Springs

PREMIER GOLF CLUB

Open to the Public

Golf Course, Driving Range, Tuition

Bar & Restaurant - Open All Day

Event & Conference Facilities

T: 01858 575 082
E: [admin@kilworthsprings.co.uk](mailto:admin@kilworthsprings.co.uk)

W: [www.kilworthsprings.co.uk](http://www.kilworthsprings.co.uk)






## T.W. Landscape & Property Services

Please Contact Thomas For A No Obligation Free Quote:

07525064220    [twlandpservices@outlook.com](mailto:twlandpservices@outlook.com)



10% WINTER DISCOUNT

Offering A Wide range Of Services:

- Hard & Soft Landscaping
- Fencing
- Building
- Driveway and Patio Installation & Maintenance
- Household Maintenance
- Very reasonable Rates!

Based In North Kilworth

## SCHOOL REPORT

HUSBANDS BOSWORTH C. of E. PRIMARY SCHOOL Head Teacher Alan Eathorne

Another half term has come and gone and we have all been busy learning lots of new things. Class 1 children have started to learn the ukulele and about repeated patterns. Class 2 have been finding out about animals found in Australia and producing non-chronological reports about them. Class 3 have been using the inspiration of others to create rainforest inspired artwork using new techniques. Class 4 have been thinking carefully about the effect language choices have on the reader (*see below*).

The teachers have been learning too. We have been looking at how we teach spelling and adapting what we do so that we teach spelling even more effectively. We have also been getting to grips with mastery in maths and reading research about effective ways of giving feedback to the children. Proof that we are all always learning!

As usual I leave you with some stunning writing - this time an extract from a description of a setting where something may be found...

*As darkness fell, the moon, like a dragon's eye, stared down on the eerie forest. Trees towered over the damp floor where beautiful branches reached out like the claws of a dragon ready to pounce on its prey. A wolf howled somewhere in the mist. The air seemed to be whispering "It's coming".*

*It had awoken; its amber, serpent like eyes opened illuminating the darkness with an orange glow. Its wings spread out like an eagle diving for its prey. Its scaly neck stretched out and its wings thrashed against the air and it launched into the mist...*

Finlay, Class 4

### FOBS NEWS

Calling all wildebeest, giraffes, zebras, elephants, lions and other wild animals of the Savannah.... It's nearly time for your annual feast, commencing at the Husbands Bosworth Village Hall watering hole! That's right, our village Safari Supper is back, now in its 20<sup>th</sup> year. If you've not taken part in this event before we urge you to give it a try this year, on Saturday, June 10<sup>th</sup> setting off from the Village Hall at 7.30pm.

For £15 you will receive a complimentary Pimms at the Hall, you will then visit three different homes in the village for starter, main course and dessert. Then it's back to the Hall for a prize draw, coffee and a liqueur.

This is usually described as a thoroughly enjoyable evening where you meet new people and discover new things about our village. Whether you've lived here for 5 weeks or 50 years, it's a great opportunity to enjoy the social side of Husbands Bosworth and indulge in a good helping of community spirit!

We invite attendees to volunteer to host a course. The key with this is simplicity - it's not a cooking competition and you will receive a financial contribution to help towards the cost of ingredients. Proceeds raised go towards our village primary school.

Watch out for the entry forms in next month's *Bugle*. In the meantime, if you have any questions or to register an interest, please contact Colleen on behalf of the FOBS (Friends of Bosworth School) Committee at colleenmwood@yahoo.co.uk

Colleen Wood

### F&W Plumbing & Heating Services Ltd

22 Elmcroft Road, North Kilworth, LE176HX

Bespoke bathroom & kitchen design and installation  
All types of wall and floor tiling  
Hot and cold water systems  
Gas-fired boiler installations and system upgrades  
Unvented hot water systems  
Gas Safe and Bepec registered

Contact Jason on 07866741261

Email: jayspanner@btinternet.com

www.fandwplumbingandheatingservices.co.uk

Over 30 years experience in designing and installing contemporary and traditional kitchens and bathrooms

Project manage personally with all associated trades for a co-ordinated high quality finish with minimum disruption

### TRADE DIRECTORY 2017

**Armourededdon Tank Paintballing Centre**  
Military vehicles, paintball & outdoor activities  
Contact: Tracey 01858 880239

**Croft Farm Bed & Breakfast**  
AA 4\*\*\*\* accommodation  
Contact: Jane Smith 880679

**Mike Price Heating Engineer**  
Oil-fired boiler servicing & repair  
Contact: Mike Price 880902

**Totally Trees Ltd.**  
Tree surgery and stump grinding  
Contact: Jacqui Mitchell 01455 554182

**Woodpecker Tree Surgery**  
All aspects of tree surgery undertaken  
Contact: Chris Wright 880818

### KILWORTH SPORTS

North Kilworth Sports Club are live-screening a number of Leicester City and Tigers matches during March. Following the club's refurbishment programme they are now able to screen live sports, as well as host quizzes, music evenings, pool tournaments and bingo evenings. Oh, and look out for the beer festival...

Tom Hancock

### BYGONE BOSWORTH

Images from the Historical Society's Archive Collection

Eagle-eyed readers may recognise this house, which stands on High Street, and has recently been sold. For such a small house it has a rich history. In recent years, 29 High Street has served as an annex to Foxbury House next door. However, to start the story we go two doors up the street to number 25, where, at the end of the 19<sup>th</sup> century the Methodist minister, Rev. Bertrand Cooper lived. He lost his wife and most of his children in a diphtheria epidemic and subsequently married a Miss Shenton, who lived next door, at 27. Through this marriage the Methodists were given the little house to use as a chapel and called it 'Little Zion'. Meetings were held there regularly until 1911, when the Wesleyan Methodist Chapel was built on a plot of land, donated by the Dawes family, off Welford Road.



### WOODPECKER TREE SURGERY

All aspects of tree-work undertaken from dismantling large roadside trees to pruning and reshaping small garden trees.

We also offer a stump grinding service.

Professionally qualified and insured.

For free quotation and advice call

Chris on: 01858 880818

www.woodpeckertreesurgery.co.uk



## ACTIVITY GROUPS 2017

### All Saints Parochial Church Council

Contact: Diana Jones 880741

### Baby-Sitting Circle

Contact: Claire Scott 880295

### Badminton Club

Contact: Ralph Horton 880526

### Beaver Scout Troop

Contact: Norman Byrd 07973 532678

### Bosworth Tots

Contact: bosworthtots@hotmail.co.uk

### Brownie Guides

Contact: Bonny Kettell 882148

### Conservative Association

Contact: Sue Fisher 880026

### Craft Group

Contact: Gail Wilmot 880413

### Historical Society

Contact: Melvyn Forman 880281

### Husbands Bosworth Rainbows Group

Contact: Wendy Cochrane 880076

### 1st Kilworth Scouts/Beaver unit

Contact: Charles Lauder Jr. 01162 478430

### Lutterworth African Drumming Group

Contact: Ralph Horton 880526

### Methodist Church Council

Contact: Margaret Scurrah 880826

### Millennium Woodland Trust

Contact: Jackie Fletcher 880910

### Royal British Legion

Contact: Robert Maxwell 880361

### South Kilworth Art Club

Contact: Maggie Roberts 01858 682173

### Tennis Club

Contact: Jennifer Rogers 880401

### Workers Education Association

Contact: Sally Sherratt 571064

## GOVANNEN

We are pleased to tell you that Govannen will be making a very welcome return to the Village Hall on Saturday, January 13<sup>th</sup>, next year.

The evening will be the same format as this year, with great entertainment plus Sam's famous pie and pea supper, all for a bargain price of £15, with proceeds supporting the Village Hall.

We have already started to gather names and will make firm arrangements and collect ticket money during November. Please book early to avoid disappointment!

Please contact Ralph or Jo on 880526 or [ralphhorton01@tiscali.co.uk](mailto:ralphhorton01@tiscali.co.uk) for more information or to book tickets.

*Ralph & Jo Horton*

## ACTIVITY & INTEREST GROUPS

### HISTORICAL SOCIETY

The next meeting of Husbands Bosworth Historical Society will be on Wednesday, March 1<sup>st</sup> at 7.30pm in the Church Hall.

Local historian, Ian Addis will be reminding us of the days before Disneyland, with his talk about the history of Wicksteed Park. One of the first leisure parks in the country, Wicksteed Park was the brain-child of Kettering industrialist and philanthropist, Charles Wicksteed and opened in 1921.

For many of us the name Wicksteed was synonymous with a 'Grand Day Out', not least for its famous watersplash rides and the narrow-gauge railway, which ran around the park.

The meeting is open to non-members, when a door charge of £2.50 is requested.

\*\*\*\*\*

For our April meeting, Dr. Susan Tebby will be enlightening us on the subject of local wind and water mills.

\*\*\*\*\*

*As part of the National Festival of Archaeology in July, the Historical Society will again be hosting a Village Heritage Walk. More details later.*

### CRAFT CLUB

The Craft Club meets on the second Wednesday of each month in the Committee Room of the Village Hall.

For details contact Gail on 880413.

\*\*\*\*\*

**Advance Notice!** The Craft Club will be holding a Craft Fair in the Village Hall on Sunday, November 19<sup>th</sup>, from 11.00am to 3.00pm.

Tables will be £10 and may be booked by ringing Jennifer Rogers on 880401.

The proceeds this year will be for LOROS  
*Jennifer Rogers*

### LATE NEWS...

Bosworth Belles ladies social group is to be relaunched. Interested? Come along to a meeting to decide the way forward at 7.00pm on Friday, March 24<sup>th</sup> at The Bell Inn.

### VILLAGE LUNCH

The Village Lunch in March will be on Tuesday, 28<sup>th</sup> at Kilworth Springs Golf Club. Diners are asked to meet, as usual, at 12.30pm.

For more information or to book a place please call Janice on 880668.

### MILLENNIUM WOOD

Woodland workparty days are on the third Saturday of each month. (see *Diary Dates p.8*) Everyone is welcome - stout boots and enthusiasm are all that's needed; tools will be provided - just turn up! Refreshments for the toilers...

### SCOUTING NEWS

1st Kilworth Scout Group, which first started up thirty years ago, has four thriving, active sections which boys and girls can join: Beavers (6-8 year olds), Cubs (8-10½ year olds), and Scouts and Air Scouts (both 10½-14 year olds). Scouts reopened in January after being shut for the past three years, while Air Scouts, which opened about 2 years ago, meet at the Gliding Centre and focuses some of its activities on aviation.

Cubs and Scouts have some camps planned in the coming months, and all four sections will be joining other groups in the South Leicestershire District at Ullesthorpe Campsite on April 23<sup>rd</sup> to celebrate St. George's Day.

1st Kilworth welcomes any parent who would like to get involved, whether it be to help out at a meeting, fundraising, or joining our Executive Committee.

*Charles Lauder Jr.*

### CAUSEWAY COFFEE MORNINGS

The Bosworth Causeway Charities trustees administer and distribute funds generated by landholdings held in perpetuity for the benefit of older parishioners, especially those living alone. The trustees distribute the funds by hosting coffee mornings, on the second Friday of each month, 10.00am to 11.30am in the Church Hall. Call 880165 for details.

## 'JJ's Kiddycare'



\*OUTSTANDING\* Ofsted grading

\* FREE Pre-school sessions for 2, 3 & 4 year olds

\* Full Day Care 0-5yrs

Situated on a farm site between South Kilworth and Welford

\* Breakfast and After School clubs. (4-14years)

\* Holiday Clubs during all Northants & Leics school breaks

Tel no. 01858 575642

[www.jjs-kiddycare.co.uk](http://www.jjs-kiddycare.co.uk)



*The UK's only Tank Paintball Battle Venue*

\*Tank Drive Experiences \* Dads & Lads Experiences\*

\*Military Vehicle Driving \*Military Vehicle Driving\*

\*Children's Military Vehicle Party \* Woodland Paintball\*

\*Archery\*

\*Air Rifle Shooting\*

Suitable for individuals, Family Fun, Corporate Events

Stag/Hen Parties

\*\*Gift Vouchers Available\*\*

[www.armourgeddon.co.uk](http://www.armourgeddon.co.uk) Tel: 01858 880239

Bookings by Appointment Only



# PARISH COUNCIL NEWS

*Report of the Parish Council Meeting held on Tuesday, December 6<sup>th</sup> 2016.*

Four Parish Councillors and two members of the public were present.

Apologies were received from James Shelley

## Visitors' Questions

■ Representatives of the village Scouts attended the meeting to discuss the review of the Scout HQ land lease. A draft lease has been produced and discussions took place around proposed changes to the responsibilities of the parties, particularly with regard to car park maintenance and access.

## Minutes of the last meeting were read and approved

## Cemetery

■ Work to trim back overhanging yew trees was to be carried out.

■ It was agreed to replace the Martin family memorial seat with a recycled plastic seat and reposition it at the head of the gravel path. Permission to site a further memorial seat had been requested and was approved.

## Playing Field & Play Area

■ Members noted that Mrs Marlow had agreed to continue as contact and bookings officer for the sports pavilion and Mr Marlow would continue as janitor and key holder for the time being.

■ Financial responsibility has reverted to the Parish Council.

## Allotments

■ A new closable noticeboard, which would fit to the existing post had been ordered for the allotment site.

■ Clerk informed Council that one plot was still vacant, with immediate access.

## Traffic Issues

■ Correspondence had been received informing Council that Plantworx 2017, the construction and materials handling exposition would be held at Bruntingthorpe in June. A traffic management plan would be issued to minimise local traffic disruption. Council noted that when the event was held in 2015 little disruption was apparent. The event organisers will liaise with local councils nearer the event.

## Neighbourhood Plan

■ Council agreed to further public discussion before agreeing to fully designating the project.

## S106 Developer Funding

■ Members noted a poor turn-out of interested groups to the meeting held at the beginning of February.

■ A series of S106 meetings will be held prior to each monthly Parish Council meeting to enable interested parties to participate.

## Accounts

■ Monthly accounts were presented and approved.

## Any Other Business

■ Clerk was asked to report blocked gullies and unreadable road markings on Welford Road to Highways.

■ Council to seek permission to fit a lock to the Village Hall above-stage storage in order to securely store parish documents and equipment.

*The next meeting will be on Tuesday, March 7<sup>th</sup>, at 7.30pm in the Committee Room of the Village Hall. The meeting will be preceded by a S106 meeting.*

## SID REPORT

Readings from the Speed Indicator Device

### Theddingworth Road west bound

Period: 18.01.17 - 25.01.17

Vehicle movements: 11754 Av./day:1469

Average speed: 31.23mph

Highest recorded speed: 58mph

### Leicester Road inbound

Period: 25.01.17 - 01.02.17

Vehicle movements: 7588 Av./day: 1084

Average speed: 27.61mph

Highest recorded speed: 48mph

### Leicester Road inbound

Period: 01.02.17 - 08.02.17

Vehicle movements: 7920 Av./day: 1131

Average speed: 28.55mph

Highest recorded speed: 50mph

### Lower Bell Lane outbound

Period: 08.02.17 - 15.02.17

Vehicle movements: 8976 Av./day: 1122

Average speed: 28.27mph

Highest recorded speed: 50mph

### High Street west bound

Period: 15.02.17 - 22.02.17

Vehicle movements: 13662 Av./day:1708

Average speed: 26.96mph

Highest recorded speed: 50mph



## Bosworth Tots

**Thursday Mornings 9.30am – 11.30am**

(Term time only)

**Husbands Bosworth Village Hall**

**£1.50 Babies under 1**

**£2.50 First child**

**50p for every additional tot**

Stay & Play session

From birth to pre school

Weekly activity

Snack time

Baby weighing scales

Plenty of cuppas and a friendly welcome and chat!

Bring your little one(s) and join in the fun!

 **Bosworth Tots**



# Karting

Leicester Airport, Gairtree Rd, Gt Stretton, Leicester. [www.stretton2000.com](http://www.stretton2000.com)

## The UK's Premier Karting experience

- 850M floodlit racing circuit
- Licensed Bar & Function room
- Slag & Hen Parties
- Corporate & Team Building Activities
- Childrens Parties
- 60 Mph, 300cc Thunder Karts
- Kart Club & Championship Races
- Junior Kart's Available
- Gift Vouchers Available
- Arrive & Drive Sessions

### Stretton Circuit 0116 259 2900

Open 7 days a week 10.00am - 9.00pm



## P.C. BUILDING SERVICES LTD

Established 27 years



Complete building service  
Specialist in new build  
Quality renovations  
& Extensions

**Tel/Fax 01858 881202**  
**Email: [pcbuildserv@btinternet.com](mailto:pcbuildserv@btinternet.com)**

Walton Grange, Bosworth Road  
Walton, Lutterworth, Leics LE17 5RW

# CHURCH NEWS

*All Saints Parish Church, Methodist Chapel & St. Mary's Roman Catholic Church*

## FROM THE RECTORY

How did you do with your New Year Resolutions? Are they a long forgotten memory, or have you managed to keep going with your best intentions for 2017? If all your good intentions came to nothing, Lent provides another opportunity to try again. Lent starts with Ash Wednesday, which this year falls on March 1<sup>st</sup> and continues up until Easter. Traditionally it has been a time of discipline - maybe of giving something up, or maybe taking something on by way of study or good deeds, so it holds something of the same feel as New Year's Resolutions. The problem with New Year or Lenten resolutions is that when we fail to keep them, then we give up. A resolve once broken is broken and can't be mended - except the Christian faith, is one of forgiveness and second chances. So if you break your intention then forgive yourself and start again. If the resolution was worth making in the first place, it's worth giving it another try.

One of our resolutions at church this year is to celebrate together more and invite others to join with us. The first opportunity for this comes with our Pancake Party on Friday, March 3<sup>rd</sup>, starting from 6.30pm in the Church Hall. If you fancy a couple of hours of chat, games, music and pancakes then do come along and join the fun - all ages welcome. Not all Lenten disciplines have to be dreary!

*Liz*

## QUEEN'S PURSE...

This year's Maundy Service, on Maundy Thursday, April 13<sup>th</sup>, will be held at Leicester Cathedral. This traditional ceremonial service has links back to Medieval times, originally as gifts of alms to the poor. In modern times purses of specially minted Maundy Money are distributed by Her Majesty The Queen to selected men and women, in recognition of their Christian service to the church and community.

## FLOWERS BY HEATHER

Easter Flower Arranging Class

Friday, April 7<sup>th</sup>

10.30am

in the Church Hall

Honeypot Lane

Cost, including all materials

£20

Call Heather on 880165

LIMITED PLACES

## PANCAKE RACE

All Saints Church will be hosting a Pancake Party in the Church Hall on Friday, March 3<sup>rd</sup>, 6.30pm - 8.30pm. A light-hearted fun evening with sing-along music and friendly banter and tabletop games... oh, and pancakes!

### ALL SAINTS FLOWER ROTA

March:

LENT - no flowers

Call Heather O'Connor on 880165

if you would like to join the Flower Rota

## METHODIST CHURCH

### Coffee Morning

Wednesday, March 15<sup>th</sup>

10.00am-12.00noon.

at the home of John & Margaret Scurrah

25 High Street

Visitors always welcome.

## ✠CHURCH SERVICES ✠

### Hexagon Benefice

- |    |   |
|----|---|
| 1  | <b>ASH WEDNESDAY</b><br>9.15am HB<br>7.00pm Arnesby   |
| 5  | 9.30am Communion Shearsby with Mowsley<br>9.30am Morning Prayer HB<br>11.00am Communion Thed.<br>11.00am Family Service B'thorpe<br>6.00pm Communion Arnesby  |
| 12 | 9.30am Morning Prayer Shearsby<br>9.30am Family Service Arnesby<br>11.00am Communion HB<br>4.00pm Seed Sowing B'thorpe<br>6.00pm Evensong Mowsley             |
| 19 | 10.30am Benefice Service Arnesby  |
| 26 | <b>MOTHERING SUNDAY</b><br>9.30am Communion Shearsby<br>9.30am Family Service Mowsley<br>11.00am Communion B'thorpe with Arnesby<br>4.30pm Promise Keepers HB |
| 29 | Messy Church Arnesby  |

*Short Communion every Wed. 9.15am HB*

Churchwarden: Diana Jones 880741

Rector: Liz Bickley 880351

### Methodist Church

- |    |                                |
|----|--------------------------------|
| 5  | Mr Stephen Pointer             |
| 12 | Circuit Service 4.00pm Kibw'th |
| 19 | Rev Andrew Murphy (Com.)       |
| 26 | Rev John Rackley               |

*Services every Sunday 6.30pm.*

Contacts:

Rev. Andrew Murphy 462889

Senior Church Steward:

Mr. A Lloyd Jones 880343

### St Mary's Roman Catholic Church

*Services every Sunday 8.30am.*

Contact:

Robert Constable-Maxwell 880361

Father Owen O'Neil 462359

## FOR SALE

Quantity of hazel hedging binders £10 per bundle. Call Jackie on 880910.



Station Road, North Kilworth, Lutterworth,  
Leicestershire LE17 6JB.  
01858 881723, 07977909806  
northkilworthwharf@tiscali.co.uk  
www.northkilworthwharf.com

**DAY BOAT HIRE**  
from £120

**LOCAL COAL DELIVERY** from £9.90  
for 25kg bag



**THE WHARF INN**  
WELFORD  
NN6 6JQ

*\*Real Ales\**

*\*Home-cooked food\**

*\*Large beer garden\**

*\*B & B\**

Tel: 01858 575075



## DIARY DATES for MARCH

Wednesday 1 <sup>st</sup>	Historical Society meeting, <i>'The Wicksteed Park story'</i> , 7.30pm CH
Friday 3 <sup>rd</sup>	Pancake Party in the Church Hall, 6.30pm - 8.30pm
Tuesday 7 <sup>th</sup>	S106 Funding meeting, 7.00pm Committee Room, VH
Tuesday 7 <sup>th</sup>	Parish Council meeting, 7.30pm Committee Room VH
Wednesday 8 <sup>th</sup>	Craft Group, 7.30pm Committee Room, VH
Friday 10 <sup>th</sup>	Causeway Coffee Morning, 10.00am - 11.30am CH
Friday 10 <sup>th</sup>	Sally Barker in the Village Hall. Doors open 7.30pm
Wednesday 15 <sup>th</sup>	Methodist Coffee Morning, 10.00am - 12.30pm 25 High Street
Friday 17 <sup>th</sup>	Mobile library
Saturday 18 <sup>th</sup>	Millennium Wood work party, 9.30am - 12.30pm
Friday 24 <sup>th</sup>	Bosworth Belles relaunch meeting, 7.00pm The Bell Inn
Sunday 26 <sup>th</sup>	BST BEGINS - CLOCKS FORWARD
Sunday 26 <sup>th</sup>	MOTHERING SUNDAY
Tuesday 28 <sup>th</sup>	Village Lunch, 12.30pm Kilworth Springs Golf Club

## FORTHCOMING EVENTS

Sun., April 2 <sup>nd</sup>	FOBS Easter Trail & Treasure Hunt
Tues., April 4 <sup>th</sup>	S106 funding meeting & Parish Council meeting
Wed., April 5 <sup>th</sup>	Historical Society AGM & meeting
Thurs., April 27 <sup>th</sup>	Sulby Gardens Spring Open Day
Wed., May 3 <sup>rd</sup>	Historical Society Social Evening visit to Police HQ at Enderby
Sat., May 13 <sup>th</sup>	80s Night in aid of Action for children charity
Sat., June 10 <sup>th</sup>	FOBS Safari Supper
Sat., June 24 <sup>th</sup>	BOSWORTH FESTIVAL 2017
Wed., July 19 <sup>th</sup>	Historical Society village heritage walk
Sat., Sept. 9 <sup>th</sup>	FOBS Family Trivia Night
Sat., Sept. 23 <sup>rd</sup>	OctoberFest in the Village Hall
Sun., Oct. 1 <sup>st</sup>	Conkers & Welly-wanging Championships
Sat., Oct. 28 <sup>th</sup>	Babble of Naseby in the Village Hall!
Sun., Nov. 19 <sup>th</sup>	Craft Fair in the Village Hall
Sat., Dec. 2 <sup>nd</sup>	FOBS Christmas Party
Sat. 2 <sup>nd</sup> & Sun 3 <sup>rd</sup> Dec.	All Saints Christmas Festival

## LOCAL PLANNING NEWS

**The following applications have been submitted to Harborough District Council:**

- 17/00024/FUL [Mr George Wade] Erect. single storey extn. to form carport, office and utility area, Broad Lane Farmhouse, Broad Lane
- 17/00070/FUL [S Heighton & E Birrell] Alterations to dwelling frontage, erect porch, render exist. wall & erect new ext. staircase to rear, 8 Highcroft
- 17/00102/TCA [Mrs Lesley Beswick] Works to trees, 54 Bell Lane
- 17/00131/FUL [NBJ London] Installation of a car park, Airfield Park, Sibbertoft Road
- 17/00146/FUL [Jennifer Cheney] Demolish exist. rear extns. & erect 2 storey rear extn. Demolish exist. front porch & erect. first floor extn. 10 Welford Road
- 17/00157/FUL [Mr Hall] Erect two storey rear & side extn. and single storey rear extn. (rev. scheme of 16/01004/FUL), 27 School Lane
- 17/00158/FUL [Ms Rachel Burr] Erection of stables, Land Pt. OS 4600, Leicester Road
- 17/00159/FUL [Ms Rachel Burr] Siting of a timber cabin for use as overnight groom accom. (retrospec.), Meadow House, Leicester Road

### **Recently determined applications:**

- 16/01541/FUL Approve (C) [Mr Andrew Smelt] Erect. first floor extn. & internal alterations, Meadow House, Leicester Road
- 16/01918/TCA Approve [Mrs & Mrs Warwick] Works to trees (fell), Meadowbank, 41 Berridges Lane

*Current applications may be inspected at the Council Offices, The Symington Building, Adam & Eve Street, Market Harborough.*

*Planning applications and other aspects of local government can now be viewed on-line at [www.harboroughonline.co.uk](http://www.harboroughonline.co.uk)*

## The Bell Inn

Husbands Bosworth

Tel: 01858 880967

*Your host: Tim*



Quiz Night every 1<sup>st</sup> & 3<sup>rd</sup> Wednesday  
 Poker Night every 2<sup>nd</sup> & 4<sup>th</sup> Wednesday  
 Food served Wednesday to Sunday  
 With the Best Sunday Lunches around  
 Senior Lunches Thursday & Friday £4.95

Serving Real Ales, IPA, Pedigree & Guest Beers

## MIKE PRICE HEATING

Oil -fired boiler & heating systems  
 Servicing & Repairs

Ring 0771 4245290 mobile  
 01858 880902 home

*Your local technician - on your doorstep*

