

## BOSWORTH FESTIVITIES...

**B**osworth Festival 2017 is coming! Hurry and dust off your straw boater, break out the Pimms and polish up the candelabra - summer is here and Bosworth lets her hair down... Yep! Bosworth Festival is back for another year!

This year's event will be on Saturday, June 24<sup>th</sup> in the grounds of Bosworth Hall. Gates open from 10.30am till midnight! Loads of charity and trade stalls, crafts, demos and displays, all-day bar, refreshments, children's fair, etc., etc.

More classic and vintage cars and bikes, vintage machinery, militaria and military vehicles than you can shake a stick at! Hundreds of VW Campers & Beetles and overnight camping for exhibitors on Saturday night on site.

Live music throughout the day and into the evening, when we will move onto the Hall lawn for our famous 'Picnic in the Park'.

Tickets on the gate £4; kids under 16 free.

For a real treat watch Bosworth Festival being made! Go to <https://www.facebook.com/thesignpostharborough/videos/1895178287370210/>



### RAYMOND IS COMING...

**R**aymond is a heritage narrowboat, looked after with his fellow boat, *Nutfield*, by the Friends of Raymond preservation group. *Raymond*, a 'butty' or unpowered boat, was launched in 1958 and was the last wooden working narrowboat built in Britain. *Nutfield*, a powered motor boat, was built in 1936 and was paired with *Raymond* for much of their working lives. Now retired and restored to original working condition the boats have often visited the local area for boat shows and taken children from the village school on short trips. This year the pair will be venturing for the first time up to Welford Wharf where they will be open for the public to see how the boat people lived, brought up their families, and worked without the conveniences of running water and electricity.

The boats will be moored at Welford over the weekend of June 10<sup>th</sup> and 11<sup>th</sup>. Come along and step into the shoes of the working boat people...

### WATERSIDE THEATRE

**C**ontinuing our nautical theme, the inimitable Mikron travelling waterways theatre will be making a welcome stop-over at Welford Wharf on Saturday, June 3<sup>rd</sup>.

This year they are touring two completely new shows around the inland waterways system and will be bringing *In at the Deep End*, a rollicking tribute to the RNLI, to Welford.

*Skipwreck RNLI is all at sea. Crew members are hard to come by and Coxswain Darren's management style isn't helping. So when seventeen year old Shannon volunteers, it's all hands on deck - particularly for Darren's teenage son, Billy!*

*Can the station survive in this 'me first' age? Will eccentric fund raiser Hazel's ideas ever turn a profit? And can Darren and Billy chart the choppy emotional waters closer to home?*

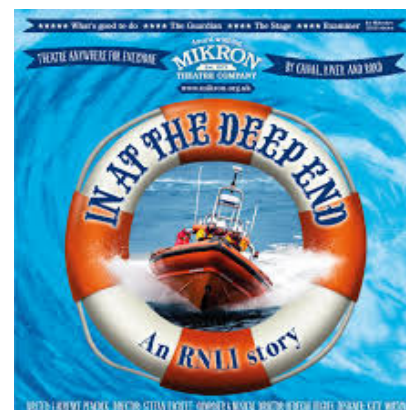
*With marvellous maritime music and fathoms of fun, join Mikron as we dive into two hundred years of saving lives at sea!*

The show is open-air and commences at 7.30pm in the Beer Garden, at The Wharf Inn. Bar food and refreshments available. No tickets required, a cash collection will be taken after the show.

01858 575075 | Web: [www.wharfinn.co.uk](http://www.wharfinn.co.uk)

\*\*\*\*\*

The other new show, *Best Foot Forward*, billed as a frenetic romp through the history of Youth Hostelling in England, will be showing at The Moorings, West Haddon Road, Crick on Sunday, June 4<sup>th</sup> at 5.00pm. No tickets required.



## BUGLE POSTBAG

*From Keith Lee, Bell Lane*

I wonder if I am alone in feeling a little disquiet at the story on the front page of the May Bugle? Already there would seem to be discrepancies between what was agreed with Davidsons, what was promised to the village and what seems to be happening. I fear we may be seeing the thin end of the wedge. 'Development by Stealth', a familiar ploy of the property developer. Doubts have already been expressed regarding the beleaguered infrastructure of this village having to cope with 41 new houses. Now we read that this number could double. As we have an elected Parish Council to represent us, I trust that they will take the strongest line with Davidsons and Harborough planners, ensuring that the development stays at the agreed figure and work on the new surgery begins as promised.

*From Amanda Parker, Leicester Road*

Since the recent upgrade to high-speed broadband, I'm sure villagers have greatly appreciated the improvement in their internet connection. However, those of us in more rural locations, living several miles from the village centre, have seen no benefit at all, as we're too far away from the exchange for BT Openreach to want to spend money installing fibre over such distances. It is unacceptable that at present, we have to pay large sums of money for broadband contracts that fail to deliver a fraction of the quoted speed and the connection frequently fails completely.

It seems that farms and other outlying residents are a 'forgotten' community, and unless people start complaining, we will continue to be ignored.

*From Marc Rowley, Cherry Tree Close*

I would like to say a massive thank you to everyone who attended the 80s fancy dress disco in aid of *Action for Children*, at our wonderful village hall on Saturday 13<sup>th</sup> May. The attention to detail with relation to fancy dress outfits was amazing and even the dancing surpassed all expectations! Special thanks also to everyone who couldn't attend but still donated.

The evening was a complete success, raising a grand total of £1,215.00, which with gift-aid comes to £1,518.75. The support of local businesses was amazing. Thanks go to The Catering Corner, Langton Brewery, Springfields, The Bell Inn, Armageddon and Downtown disco, who made a comeback after being retired for a while. Thanks also to the selfless volunteers who made it all happen: Penny Arscott, Ceri Womack, Michelle Bennett, Sam Bell, Hayley Fisher and Gayle Rowley, without them this couldn't have happened. Watch this space as we intend to learn from this experience and arrange an even bigger, better event next year.

## POLICE FILE

**Myself and PC Andy Cooper undertook a monitored speeding local op, at the end of May on High Street, Husband Bosworth. During our time there we observed one bus, seven vans, three HGVs and nineteen cars. All were within the national speed limit for the area, of 30mph. One driver, however was reported by PC Cooper, for not wearing a seat belt. Local residents commented that they thought this was a positive pro-active event.**

*PCSO Peter Willson*

**EDITOR'S NOTE:** *We've had numerous reports of vehicles travelling the wrong way on Bell Lane and Berridges Lane in the village. Although this has always been a problem it seems to have escalated recently. Obviously vehicles exiting onto High Street is dangerous and can cause problems for vehicles trying to enter the one-way system. To gain an idea of the numbers involved can villagers monitor the situation, and perhaps take a picture and email the Bugle?*



## THE BUGLE TEAM

**Editor:**

**Melvyn Forman**

**10 Church Lane**

**Tel: 880281**

**Email: bosworth\_bugle@talk21.com**

**Treasurer & Advertising:**

**Ralph Horton**

**18 Highcroft**

**Tel: 880526**

**Contacts:**

**Mike & Sylvia Price**

**3 Highcroft**

**Tel: 880902**

**Jo Horton**

**18 Highcroft.**

**Tel: 880526**

**Frances Smith**

**10 Butt Lane**

**Tel: 880225**

**Penny Mattock**

**9 Fernie Court**

**Tel: 881140**

**Heather O'Connor**

**16 Fernie Court**

**Tel: 880165**

**Postal Subscription & distribution:**

**Melvyn Forman**

**Tel: 880281**

**Email: bosworth\_bugle@talk21.com**

**www.husbandsbosworth.info**

**COPY DEADLINE  
15<sup>th</sup> OF THE MONTH  
PRECEDING PUBLICATION**

## POLICE FILE

**IF YOU HAVE INFORMATION ON ANY CRIMINAL ACTIVITY CALL MARKET HARBOROUGH POLICE on 101**

**Neighbourhood Watch Co-ordinator**

**Stephen Bilbie**

**stephenbilbie@btinternet.com**

**NW Community Scheme No. 2123**

**Lutterworth South Neighbourhood Team**

**Sgt. 2241 Mark Williams**

**PCSO 6569 Peter Willson**

**PCSO 6008 Laura Bolton**

**PC 4203 Niké Diaper**

**Voicemail Service 0116 2485675**

**CRIMESTOPPERS**

**FREEPHONE 0800 555111**

## MIKE PRICE HEATING

**Oil -fired boiler & heating systems  
Servicing & Repairs**

**Ring 0771 4245290 mobile  
01858 880902 home**

*Your local technician - on your doorstep*





# BOSWORTH IN FOCUS

## A TASTE OF BOSWORTH

A family favourite, with flavours of sweet and sour, but with a spicy twist on the pork... Easy to make for a mid-week supper.

### Pirate Pork Escalopes

*Serves 4*

*1 whole pork tenderloin cut into 4 equal pieces*

*1 egg*

*75g white breadcrumbs*

*2 level teaspoons curry powder*

*50g butter*

*3 tablespoons vegetable oil*

### Sauce

*1 small can pineapple rings, drained with juice set aside*

*3 tablespoons golden syrup*

*1/2 level teaspoon ground ginger*

*2 tablespoons tomato ketchup*

*Ground black pepper*

### Method

Preheat oven 180C, Gas 4

Flatten the pork by beating with a rolling pin on a chopping board. Lightly beat the egg then mix breadcrumbs with curry powder. Dip pork slices into egg then toss in curried breadcrumbs. Melt butter and oil together in large frying pan and fry escalopes quickly on each side until golden brown. Remove, drain on kitchen towel and place in large flat casserole dish.

Make the sauce by mixing the pineapple juice, golden syrup, ginger and tomato ketchup in a pan. Bring to boil, stirring occasionally until liquid is reduced. Pour sauce over pork slices, sprinkle liberally with black pepper and top each slice with a pineapple ring. Bake, uncovered, for 20-30 minutes, until cooked through. Serve with plain boiled rice.

*Jackie Kerr*

## BUGLE CRACKER

The guy who invented the computer mouse died recently. They tried right-clicking but couldn't save him...

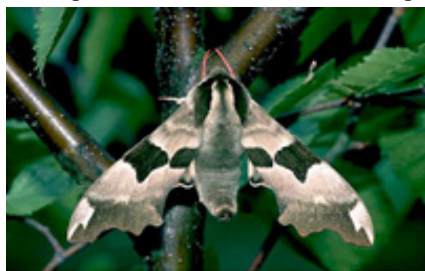
## WILD ABOUT BOSWORTH

### Turville Memorial Hall Lime Trees

The seven trees standing sentinel about our village hall are lindens, often known as tilia or lime trees, though they are unrelated to the citrus lime. They are the Common Lime variety - *Tilia X Europaea*. The 'X' signifies they are hybrids; specifically of the large and small-leaved linden species. Limes can reach a great age; there are specimens over 1,000 years old and a coppice of *Tilia Cordata* in Gloucestershire is estimated to be twice that age. It's likely ours were planted soon after the hall was built in 1895, making them youngsters of 120 or so. (If a village historian knows the details of their provenance, perhaps they can drop a line to the *Bugle*.)

The sap of the tree attracts swarms of aphids. When they bite into the veins of the leaves, the pressure of the sap forces the sugary fluid through their digestive tract and out the other end. This in turn attracts ants and bees to harvest their sweet secretions. Even though the ants fight to protect their food source, there are lots of creatures that feast on the aphids; ladybirds and lacewings, etc. And naturally, there are lots of creatures that feast on the creatures that feast on the aphids!

The blossom is a favourite nectar and pollen source for bees. The leaves also nourish many moth species, most notably the magnificent Lime



Photograph courtesy of Nick Greateorex-Davies  
[www.ukmoths.org.uk](http://www.ukmoths.org.uk)

Hawk-Moth, which you might see fluttering round your headlights on a dark night.

And lastly, if, after parking underneath their branches you feel stressed when you return to a sugar-coated car, try making a soothing cup of lime blossom tea. This was a popular relaxing brew during the war years, when tea was short.

## PLANT SALE

There will be a Plant Sale at The Old House, Honeypot Lane on Saturday, June 10<sup>th</sup>, 10.00am and 2.00pm. Most plants will be home-grown 'cottage garden perennials', plus annual flowers and veggie plants I have grown. Proceeds are in aid of *Angels Small Paws Dog Rescue*, a local charity that places dogs from pounds in foster homes until they find their 'Forever Home.'

Come for a cuppa and a chat, and, support this little-known local charity.

For more info please ring 880476

*Eleanor Murphy*

## SULBY GARDENS

Sulby Gardens will be opening its gates for the second time this year under the National Gardens Scheme on Thursday, June 22<sup>nd</sup> from 2.00pm to 5.00pm.

Featured will be the two amazing wildflower meadows in full bloom..

As usual, tea and homemade cakes will be served in the Conservatory Tea Room, and Sulby Gardens Apple Juice, made from our own apples, as well as home grown plants will be for sale while stocks last.

Sulby Gardens, Sulby, Northants NN6 6EZ

*Mike Chanter*

*Alison Lowe*



## T.W Landscape & Property Services

Please Contact Thomas Wright For A No Obligation Free Quote:  
**07525064220**   [twlandpservices@outlook.com](mailto:twlandpservices@outlook.com)

Offering All Types of Hard & Soft Landscaping:-

- Fencing & Repairs - - Decking
- Building Work - - Concrete Bases
- Turfing - - Pruning - - Garden Clearance
- Shed / Stable / Garage Builds
- Driveway / Patio Installation & Maintenance
- Household Maintenance
- Very Reasonable Rates!

Based in North Kilworth



## Scott Clarke Building

**07725 552566**  
**01858 880863**  
[sclarkebuilding@outlook.com](mailto:sclarkebuilding@outlook.com)

Alterations  
Extensions  
Plastering  
Hard-landscaping  
Block-paving  
General Building Works  
For free quote or design ideas call Scott

# SCHOOL REPORT

HUSBANDS BOSWORTH C. of E. PRIMARY SCHOOL Head Teacher Alan Eathorne

Husbands Bosworth School has been a hive of activity during the last month. Class 1 have begun their topic on traditional tales and using these stories to put on plays, writing to the characters and using them to design houses (that the Big Bad Wolf can't blow down!). Class 2 have been learning about plants and carrying out experiments to see what conditions help plants to grow best. Class 3 have started to learn about the Romans and have already found out a lot about their lives and important events that occurred during these times, such as Mount Vesuvius erupting in AD79. Class 4 have been reading *Kensuke's Kingdom* and using this to illustrate their topic about 'Storms and Shipwrecks'. I would also like to add that we are all very proud of our Year 6 children who have completed the 'SATS' tests. They were calm and very mature in their approach and tried their very best, which is all we could ask from them.



Class 3 – Romans Display

The children have also helped raise money for the LOROS hospice through *Fitness in Schools*. The children took part in a sponsored activity where they had to use their co-ordination and motor skills to complete a series of challenges. We have also been busy collecting Sainsbury's vouchers - collecting over 5000. Miss Tedds and Mrs Vickers are busy seeing what cooking and PE equipment we can exchange these for. A huge thank you to all the parents and members of the village who have been collecting these for us - much appreciated.

I leave you with a couple of short (but perfectly formed!) pieces of descriptive writing:

*The old, wrinkly lady screeched as she saw the mountain blazed with lava rushing straight to the bay.*

by Daniel and Jack - Class 3 (The beginning of a description about life in Pompeii.)

*Gazing into the eerie, black-eyed sky, he wondered if he would ever see the Peggy Sue again.*

by Zara - Class 4 (The start of a story based on *Kensuke's Kingdom* by Michael Morpurgo.)

## FOBS NEWS

We are off to a great start so far this year with our fund-raising. Thank you to everyone who joined in the Pokémon Games afternoon and enjoyed the Easter Trail & Treasure Hunt. Between them we raised £600! We are very much looking forward to our next event which is the Safari Supper on Saturday, June 10<sup>th</sup>.

We are always chuffed to see the money we have raised being spent on some wonderful activities for the children and equipment for the school. So far this year FOBS have funded:

- A percussion day for the whole school
- 'Animals for Parties' visited Classes 1 & 2 with their menagerie of exotic creatures and pets.
- Partially subsidised the new PE climbing frame
- New board games for the after-school board games club and wet play time
- A class set of ukuleles!!!
- Two scooter racks, so children can leave their scooters at school

This all couldn't be achieved though without the support of everyone who helps organise and attend our events. We are truly thankful to everyone for supporting FOBS and our fundraising efforts.

## TRADE DIRECTORY 2017

**Armouredgon Tank Paintballing Centre**  
Military vehicles, paintball & outdoor activities  
Contact: Tracey 01858 880239

**Croft Farm Bed & Breakfast**  
AA 4\*\*\*\* accommodation  
Contact: Jane Smith 880679

**Mike Price Heating Engineer**  
Oil-fired boiler servicing & repair  
Contact: Mike Price 880902

**Totally Trees Ltd.**  
Tree surgery and stump grinding  
Contact: Jacqui Mitchell 01455 554182

**Woodpecker Tree Surgery**  
All aspects of tree surgery undertaken  
Contact: Chris Wright 880818

*To advertise here call Ralph  
on 880526  
or email: ralphhorton01@tiscali.co.uk*

## BYGONE BOSWORTH

*Images from the Historical Society's Archive Collection*



*Just to prove that the Historical Society Archive is not completely full of dusty old pictures...*

*We thank former villager Ivor Dann for this photo, taken in the dying days of the old Post Office and shop, in December 2015. The sticking door, curled mats and cramped shelves are now but a distant memory - the beatific Mary however, happily remains...*



**P.C. BUILDING SERVICES LTD**  
Established  
27 years



Complete building service  
Specialist in new build  
Quality renovations  
& Extensions

**Tel/Fax 01858 881202**  
**Email: pcbuildserv@btinternet.com**

Walton Grange, Bosworth Road  
Walton, Lutterworth, Leics LE17 5RW

## The Bell Inn

Husbands Bosworth

Tel: 01858 880967

*Your host: Tim*



Quiz Night every 1<sup>st</sup> & 3<sup>rd</sup> Wednesday  
Food served Wednesday to Sunday  
With the Best Sunday Lunches around  
Senior Lunches Thursday & Friday £4.95

Serving Real Ales, IPA, Pedigree & Guest Beers



## ACTIVITY GROUPS 2017

### All Saints Parochial Church Council

Contact: Diana Jones 880741

### Baby-Sitting Circle

Contact: Claire Scott 880295

### Badminton Club

Contact: Ralph Horton 880526

### Beaver Scout Troop

Contact: Norman Byrd 07973 532678

### Bosworth Tots

Contact: bosworthtots@hotmail.co.uk

### Brownie Guides

Contact: Bonny Kettell 882148

### Conservative Association

Contact: Sue Fisher 880026

### Craft Group

Contact: Gail Wilmot 880413

### Historical Society

Contact: Melvyn Forman 880281

### Husbands Bosworth Rainbows Group

Contact: Wendy Cochrane 880076

### 1st Kilworth Scouts/Beaver unit

Contact: Charles Lauder Jr. 01162 478430

### Lutterworth African Drumming Group

Contact: Ralph Horton 880526

### Methodist Church Council

Contact: Margaret Scurrah 880826

### Millennium Woodland Trust

Contact: Jackie Fletcher 880910

### Royal British Legion

Contact: Robert Maxwell 880361

### South Kilworth Art Club

Contact: Maggie Roberts 01858 682173

### Tennis Club

Contact: Jennifer Rogers 880401

### Workers Education Association

Contact: Sally Sherratt 571064

## ACTIVITY & INTEREST GROUPS

### HISTORICAL SOCIETY

The Historical Society annual day trip will be on Sunday, June 18<sup>th</sup> when we will be treated to a bus trip on a heritage bus, courtesy of the Leicester Transport Heritage Trust, to their museum and depot in Leicester. The trip is open to members and friends. Bus-ticket of £5 per person. Meet outside Springfields at 1.45pm.

*Our Annual Garden Party, at the home of Brian and Frances Smith, 10 Butt Lane, on Sunday, July 9<sup>th</sup>, which will wind up our Society year. Members, past members and friends are invited to join us for a traditional strawberry cream tea with cheeseboard and Heather's famous summer punch! Cost £4.00 per head.*

### CRAFT GROUP

The Craft Group meets at 7.30pm on the second Wednesday of each month in the Committee Room of the Village Hall. This is a friendly and informal gathering where craft-minded people can pick up new ideas and practise their craft in a relaxed atmosphere away from the distractions of homelife.

For details contact Gail on 880413.

### SOUL TRAIN

North Kilworth Sports Club invite you to join them on Friday, June 9<sup>th</sup> when they will be hosting acclaimed local soul group, *Stax of Soul*, live.

For tickets (£10) or further info call 880890, Gary 07946 562022 or Rocky 0116 2478202

### VILLAGE LUNCH

The next Village Lunch will be on Tuesday, June 27<sup>th</sup> at Kilworth Springs Golf Club.

The Village Lunch is a great way for those new to the area or recently retired to meet old friends and make new friends in a relaxed atmosphere, whilst enjoying an excellent 2-course meal. The cost of the meal, including coffee and mints is £7.50 per person.

Call Janice on 880668 to book a place or for more information.

### BOSWORTH BELLES

The Belles are back in full swing! Hayley and Penny have put together a plan of events for the rest of the year. As agreed, the meetings will be bi-monthly at present.

*Thursday, June 22<sup>nd</sup> Walk & Pub! 7.00pm Welford Canal Walk - 4½ miles circular - start, ending at the Wharf Inn, for those who want to quench their thirst!*

*Please let us know if you can attend the walk by June 9<sup>th</sup>.*

### Further meetings:

August - Rounders

October - Market Harborough Ghost Walk

December - Wreath Making

(Dates to be confirmed)

### MILLENNIUM WOOD

The next Woodland work day will be on Saturday, June 17<sup>th</sup>.

Come along, get some fresh air and help to keep the village's community woodland trim and tidy. Coffee and biscuits mid-morning for the troops!

Call Jackie on 880910 for details.

### EARLY NOTICE

Penny Mattock is holding another Summer Coffee Morning in aid of LOROS at her home, 9 Fernie Court, on Saturday, August 5<sup>th</sup>.

Penny is walking the Cleveland Way, in aid of LOROS in September.

More details to follow in the July Bugle.

### HORTICULTURAL & CRAFT SHOW

Growers alert!

Annual Village Crafty and Veggie Show, Sunday, August. 20<sup>th</sup>



### VILLAGE HALL BOOKINGS

Roni Jones 07442 954729

husbandsbosworthvh@gmail.com

www.husbandsbosworthvillagehall.co.uk

### CHURCH HALL BOOKINGS

[Bookings suspended]

### SPORTS PAVILION ENQUIRIES

Audrey Marlow 880316

## 'JJ's Kiddycare'



\*OUTSTANDING\* Ofsted grading

\* FREE Pre-school sessions for 2, 3 & 4 year olds

\* Full Day Care 0-5yrs

Situated on a farm site between South Kilworth and Welford

\* Breakfast and After School clubs. (4-14years)

\* Holiday Clubs during all Northants & Leics school breaks

Tel no. 01858 575642

www.jjs-kiddycare.co.uk



Station Road, North Kilworth, Lutterworth,  
Leicestershire LE17 6JB.  
01858 881723, 07977909806  
northkilworthwharf@tiscali.co.uk  
www.northkilworthwharf.com

DAY BOAT HIRE  
from £120

LOCAL COAL  
DELIVERY from £9.90  
for 25kg bag

# PARISH COUNCIL NEWS

## **Report of the Parish Council Annual General Meeting held on Tuesday, May 2<sup>nd</sup> 2017.**

Four Parish Councillors, District Councillor Lesley Bowles and Planning Consultant John Millhouse were present.

Apologies were received from James Shelly

### **Election of Officers**

#### **Election of Chairman for the forthcoming year**

■ Bill Fletcher was proposed and seconded and agreed to return to the Chair

#### **Election of Vice Chairman**

■ Melvyn Forman agreed to continue as Vice Chairman and was duly elected

#### **Election of Representatives to the Sports Field Committee**

■ Melvyn Forman, Patricia Hobson and James Shelly were elected.

#### **Election of Bosworth Charities Representatives**

■ Patricia Hobson and Sue Fisher agreed to carry on in post and were duly elected

#### **Election of Representatives to the Village Hall Committee**

■ Sue Fisher and James Shelly were duly elected

#### **Election of Representative to the Woodland Trust Committee**

■ Patricia Hobson was duly elected

#### **Election of Representatives to the Lafarge Liaison Group**

■ Melvyn Forman and Patricia Hobson were elected.

*There being no further business the Chairman declared the meeting closed*

## **Report of the Parish Council meeting held on Tuesday, May 2<sup>nd</sup> 2017 following the AGM.**

### **Visitors' Questions**

■ Mr John Millhouse, Planning Consultant to the Constable-Maxwell family outlined proposals for a development of 24 homes on land off Theddingworth Road. He stressed that plans had yet to be finalised and submitted and was only wishing to bring the proposal to Council for information.

### **Minutes of last meeting were read and approved**

#### **Cemetery**

■ Two new memorial benches for the cemetery have been delivered and await installation.

#### **Playing Field & Play Area**

■ Chairman informed the meeting that the pavilion French doors shutter had jammed and would need repairing and servicing. He felt that a maintenance contract for all the shutters should be considered.

■ Work had been carried out to trees bordering the Welford Road house gardens.

■ The new gate and fencing adjacent to the Scout HQ had now been completed.

#### **Allotments**

■ Mr Forman agreed to repair the noticeboard and mount it on a concrete post.

#### **Neighbourhood Plan**

■ Council formally signed up to the Terms of Reference & Governance, to carry the project forward.

#### **S106 Developer Funding**

■ An S106 meeting would precede the next Parish Council meeting at 7.00pm on June 6<sup>th</sup>.

#### **Correspondence**

■ Chairman had contacted Davidsons with the prospect of setting up a contact point with the company.

■ Council discussed queries raised by the Scouts regarding the renewal of the HQ land lease.

#### **Any Other Business**

■ It was agreed that the Historical Society could install their projector screen in the Pavilion as it is likely that meetings would be held there in future.

*The next meeting will be on Tuesday, June 6<sup>th</sup>, 2017, at 7.30pm in the Committee Room of the Village Hall. The meeting will be preceded by an S106 meeting.*

## **SID REPORT**

Readings from the Speed Indicator Device

### **Kilworth Road (outbound)**

Period: 19.04.17 - 26.04.17

Vehicle movements: 14651 Av./day: 2093

Average speed: 33.36mph

Highest recorded speed: 63mph

### **Kilworth Road (inbound)**

Period: 26.04.17 - 03.05.17

Vehicle movements: 12738 Av./day: 1592

Average speed: 33.07mph

Highest recorded speed: 70mph

### **Kilworth Road (inbound)**

Period: 03.05.17 - 10.05.17

Vehicle movements: 13860 Av./day: 1733

Average speed: 33.08mph

Highest recorded speed: 63mph

### **Theddingworth Road (inbound)**

Period: 10.05.17 - 17.05.17

Vehicle movements: 12342 Av./day: 1763

Average speed: 31.26mph

Highest recorded speed: 65mph

## **WOODPECKER TREE SURGERY**

All aspects of tree-work undertaken from dismantling large roadside trees to pruning and reshaping small garden trees.

We also offer a stump grinding service.

Professionally qualified and insured.

For free quotation and advice call

Chris on: 01858 880818

[www.woodpeckertreesurgery.co.uk](http://www.woodpeckertreesurgery.co.uk)



MILITARY VEHICLE DRIVING AND TANK BATTLES AT  
**ARMOURGEDDON**

*The UK's only Tank Paintball Battle Venue*

\*Tank Drive Experiences \*Dads & Lads Experiences\*

\*Military Vehicle Driving \*Military Vehicle Driving\*

\*Children's Military Vehicle Party \*Woodland Paintball\*

\*Archery\*

\*Air Rifle Shooting\*

Suitable for individuals, Family Fun, Corporate Events

Stag/Hen Parties

\*\*Gift Vouchers Available\*\*

[www.armouredgon.co.uk](http://www.armouredgon.co.uk) Tel: 01858 880239

Bookings by Appointment Only



# CHURCH NEWS

*All Saints Parish Church, Methodist Chapel & St. Mary's Roman Catholic Church*

## FROM THE RECTORY

Thanks for your support!

On Saturday, May 13<sup>th</sup> we saw a good crowd gather to hear Foresters Brass give a wonderful concert in All Saints Church, with such a wide range of music and musical styles from musicals to sacred, classical and popular, slow and gentle to fast and complicated. This has raised a good sum, (around £1000 - final sum still to be confirmed) for church roof repairs and for Christian Aid - two worthy causes. We are very grateful to those who contributed to the evening, to the band, to all who came along to listen, to those who sponsored us which covered all our expenses, to those who donated refreshments and raffle prizes, to those who sold tickets and to those who worked on the evening to help everything run smoothly. It was good team work - thank you to everyone.

The situation with the church roof is that the south aisle roof covering needs replacing, as having been repaired a number of times over the years it is now beyond patching up and we currently await the necessary permissions to go ahead with the work. The cost of this will significantly drain our current resources and so fund-raising for this will continue.

In previous years fund-raising for Christian Aid has been by a house to house collection, which has been replaced this year by our support through the concert. Christian Aid is a UK charity fighting global poverty and works in over 60 different countries around the world regardless of race or religion. Their work includes emergency and disaster relief, working with developing communities and campaigning for change on matters of social justice; they have been working with refugees since the end of the Second World War and continue to do so. If any were not able to attend the concert and would like to give to Christian Aid's work, donations can be made online at [caweek.org](http://caweek.org) or by calling 08080 006006.

Thanks to you all.

*Liz*

## Parish Notices

**Elizabeth (Betty) Bennett**  
*of Welford Road*  
Died May 15<sup>th</sup> 2017

**Janet Smith**  
*formerly of Church Lane*  
Died May 11<sup>th</sup> 2017  
Aged 97 years  
**R.I.P**

## ALL SAINTS FLOWER ROTA

**June**

*Sue Fisher*

Call Heather O'Connor on 880165  
if you would like to join the Flower Rota

## METHODIST CHURCH

### Coffee Morning

Wednesday, June 21<sup>st</sup>

10.00am-12.00noon.

at the home of John & Margaret Scurrah  
25 High Street

Visitors always welcome.

## †CHURCH SERVICES †

### Hexagon Benefice

- |           |   |
|-----------|---|
| <b>4</b>  | <b>Pentecost</b><br>11.00am Benefice Service Thedd.   |
| <b>11</b> | <b>9.30am Communion Shearsby</b><br><b>9.30am Family Service Arnesby</b><br><b>11.00am Communion HB</b><br><b>6.00pm Evensong Mowsley</b>                       |
| <b>18</b> | <b>10.30am Benefice Service Shearsby</b><br><b>3.00pm Knaptoft</b>  |
| <b>25</b> | <b>9.30am Communion Mowsley</b><br><b>9.30am Family Service Shearsby</b><br><b>11.00am Communion B'thorpe with Shearsby</b><br><b>4.30pm Promise Keepers HB</b> |

*Short Communion every Wed. 9.15am HB*

**Churchwarden:**

**Diana Jones 880741**

**Rector:**

**Liz Bickley 880351**

### Methodist Church

*Services every Sunday 6.30pm.*

*All Welcome*

- |           |                                 |
|-----------|---------------------------------|
| <b>4</b>  | <b>Mr Michael May</b>           |
| <b>11</b> | <b>Rev Andrew Murphy</b>        |
| <b>18</b> | <b>Mrs Jeanne Moore</b>         |
| <b>25</b> | <b>Rev Andrew Murphy (Com.)</b> |

**Contacts:**

**Rev. Andrew Murphy 462889**

**Senior Church Steward:**

**Mr. A Lloyd Jones 880343**

### St Mary's Roman Catholic Church

*Services every Sunday 8.30am.*

**Contact:**

**Robert Constable-Maxwell 880361**

**Father Owen O'Neil 462359**

## HOT GOSPEL

Hothorpe Hall are hosting a Gospel Concert featuring the Emmanuel Apostolic Gospel Academy Choir from Leicester, who became the unofficial choir of the Leicester City FC title celebrations last year. Pipped at the last post in Gareth Malone's *Best in Britain 2016*, the choir focuses on gospel music and bringing joy to people's hearts! The concert is on Friday, June 23<sup>rd</sup> at 7.30pm. Tickets £12. Book online: [www.hothorpe.co.uk/gospelconcert](http://www.hothorpe.co.uk/gospelconcert)

# Karting

Leicester Airport, Gattree Rd, Gt Stretton, Leicester. [www.stretton2500.com](http://www.stretton2500.com)

## The UK's Premier Karting experience

850M floodlit racing circuit
Licensed Bar & Function room
Slag & Hen Parties

Corporate & Team Building Activities
Childrens Parties

60 Mph, 300cc Thunder Karts
Kart Club & Championship Races

Junior Kart's Available
Gift Vouchers Available

Arrive & Drive Sessions

## Stretton Circuit 0116 259 2900

Open 7 days a week 10.00am - 9.00pm

## F&W Plumbing & Heating Services Ltd

22 Elmcroft Road, North Kilworth, LE176HX

Bespoke bathroom & kitchen design and installation  
All types of wall and floor tiling  
Hot and cold water systems  
Gas-fired boiler installations and system upgrades  
Unvented hot water systems  
Gas Safe and Bepec registered

**Contact Jason on 07866741261**

Email: [jayspanner@btinternet.com](mailto:jayspanner@btinternet.com)

[www.fandwplumbingandheatingservices.co.uk](http://www.fandwplumbingandheatingservices.co.uk)

*Over 30 years experience in designing and installing contemporary and traditional kitchens and bathrooms*

*Project manage personally with all associated trades for a co-ordinated high quality finish with minimum disruption*



## DIARY DATES for JUNE

Saturday 3 <sup>rd</sup>	Mikron Theatre - <i>In at the Deep End</i> , 7.30pm at Welford Wharf
Tuesday 6 <sup>th</sup>	Parish Council meeting, 7.30pm Committee Room, Village Hall
Friday 9 <sup>th</sup>	Causeway Cofee Morning, 10.00am - 11.30am Pavilion
Saturday 10 <sup>th</sup>	Charity Plant Sale 10.00am - 2.00pm, The Old House, Honeypt Lane
Saturday 10 <sup>th</sup>	FOBS Safari Supper, 7.30pm, Village Hall
Friday 16 <sup>th</sup>	Mobile library
Saturday 17 <sup>th</sup>	Millennium Wood work party, 9.30am - 12.30pm
Sunday 18 <sup>th</sup>	Historical Society Heritage Bus Tour, meet outside Springfield Store, 1.45pm
Wednesday 21 <sup>st</sup>	Methodist Coffee Morning, 25 High Street, 10.00am - 12.00 noon
Thursday 22 <sup>nd</sup>	Bosworth Belles Walk & Pub Evening, 7.00pm The Wharf Inn, Welford
Friday 23 <sup>rd</sup>	Gospel Concert at Hothorpe Hall, 7.30pm
Saturday 24 <sup>th</sup>	BOSWORTH FESTIVAL 2017 Gates open 10.00am

## FORTHCOMING EVENTS

Wed. July 19 <sup>th</sup>	Historical Society village heritage walk
Fri. July 21 <sup>st</sup> & Sat. 22 <sup>nd</sup>	Husbands Bosworth & Theddingworth Sheepdog Trials
Sat. August 5 <sup>th</sup>	Penny's LOROS Coffee Morning
Sat. August 20 <sup>th</sup>	Horticultural & Craft Show
Sat. Sept. 9 <sup>th</sup>	FOBS Family Trivia Night
Sun. Oct. 1 <sup>st</sup>	Conkers & Welly-Wanging Championships
Sat. Oct. 28 <sup>th</sup>	Babble of Naseby in the Village Hall!
Sun. Nov. 19 <sup>th</sup>	Craft Fair in the Village Hall
Sat. Dec. 2 <sup>nd</sup>	FOBS Christmas Party
Sat. 2 <sup>nd</sup> & Sun 3 <sup>rd</sup> Dec.	All Saints Christmas Festival

## LOCAL PLANNING NEWS

The following applications have been submitted to Harborough District Council:

■ 17/00623/FUL [Mr George Wade] Erection of side extension to agricultural barn, Honeypt Farm, Honeypt Lane

Recently determined applications:

■ 17/00151/FUL Approve (C) [Mr Charles Hurst] Erection of open sided steel framed agricultural building, Land off Leicester Road

■ 17/00184/FUL Approve (C) [Mr Thomas Morgan] Erection of single storey rear extension, 36 High Street,

■ 17/00337/FUL Approve (C) [Davidsons Developments] Erection of an electric sub station, Land off Welford Road

■ 17/00348/FUL Approve (C) [NBJ Airfield Park Ltd] Extend existing factory & workshops & erect outbuilding, Airfield Park, Sibbertoft Road

Current applications may be inspected during normal working hours at the Council Offices, The Symington Building, Adam & Eve Street, Market Harborough. Comments concerning planning applications should be addressed to the Development Control Manager.

Planning applications and other aspects of local government can now be viewed on-line at [www.harboroughonline.co.uk](http://www.harboroughonline.co.uk)

## MOBILE LIBRARY

### NOTE CHANGES TO SERVICE

The Mobile Library will now be calling on the third Friday of each month.

### STOPS & TIMES

School, Welford Road: 10.35am - 11.35am

Berridges Lane: 11.40am - 12.20pm

Church Street: 12.25pm - 1.00pm

Now lending Talking Books on CD & tape

\*\*\*\*\* You can now renew on-line or by phone \*\*\*\*\*

## COMPLETE CAR CARE

Accident repair specialist

Bodywork, dent, scratch and stone-chip repair

Servicing, alloy refurbishment, welding

MoT repair

Valeting, full body polish

Parking sensors, tyres & exhausts, etc. fitted

Call Ben on 01858 880404

[bencompletecarcare@outlook.com](mailto:bencompletecarcare@outlook.com)



FLAT ROLLING • GRASS TOPPING • CHAIN HARROWING • FENCING  
LAWN MOWING • HEDGE TRIMMING • GENERAL GARDEN MAINTENANCE



Open to the Public

Golf Course, Driving Range, Tuition

Bar & Restaurant - Open All Day

Event & Conference Facilities

T: 01858 575 082 E: [admin@kilworthsprings.co.uk](mailto:admin@kilworthsprings.co.uk)

W: [www.kilworthsprings.co.uk](http://www.kilworthsprings.co.uk)

