

## THE BOSFEST BREW 2018

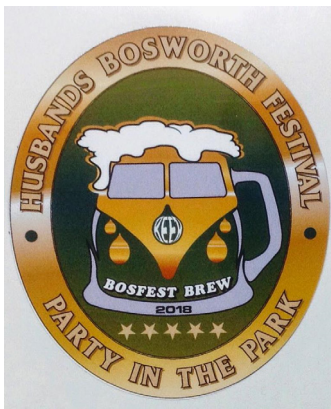
**T**ake a look at the **Husbands Bosworth Festival facebook page** and you'll see how popular and well-received our festival was this year, and how well established it has become with our visitors and exhibitors!



Say no more; we all know that we had a great weekend this year, from the weather and the attendance point of view (we took almost £6,000 on the gate!) and from the vast and ever-increasing array of things going on across the field during the day and the over wider weekend for some, despite stiff opposition from other events over the weekend!

As people packed up and left the cry was "See you next year!", so let's hope that the weather is as kind for 2019 as it was this!

You also know you've 'arrived' as an event when you have a beer brewed



specialy for your event... Hauling all the way from sunny Shropshire to serve us in their nifty little *Beer Buz* VW camper- bar conversion, Garry and Hayley served up a well-received draught of BosFest Brew 2018 to a ready and willing stream of thirsty customers throughout the day.

The final divvying up of proceeds from the event has yet to be finalised, but it looks as if the Festival Committee will be able to donate over £6,000 to local good causes and the 'headline' charities.



## HORTICULTURAL AND CRAFT SHOW

**Y**ay... the Horticultural and Craft Show is NOT dead - it's just going to lay dormant until next year!

A group of community-minded villagers, relatively new to our midst, have come forward and will take over the Show and carry on this traditional village event for next year.

Considering we are experiencing the longest heatwave in forty years, it's probably a blessing in disguise that there isn't a Show this year - we think that veggie and flower exhibits would be rather thin on the ground!

If you still hold any presentation silverware from last year, that you've not returned to Eleanor, could you please do so as soon as possible? Call Eleanor on 880467.

## BUS START

**T**he 58 bus service has gained a reprieve and we'd like to think that it was the furore generated by bus-users along the A4304 corridor, threatened by the loss, that has saved it..

Like knights in shining armour Leicestershire County Council have come to an arrangement with a new contractor, *Centrebus*, who have agreed to run the route as a subsidised service until July 2019.

The route and timetable remains the same as the previous *Hinckleybus* service, with the only difference being the change of operator. It still remains to be seen what will happen at the end of this temporary contract, especially as a major funding shuffle for public transport is on the cards, for June next year, across the whole of Leicestershire. Meanwhile Welford have been fighting to retain their connection with the outside world. With county and parish council backing they have managed to secure their 59 service to Market Harborough, which takes the tortuous route through Naseby, Clipston, Sibbertoft, Marston Trussell and East Farndon.

And guess who the operator of that service is? Yup, *Centrebus*... Any chance that *Centrebus*, Leicestershire County Council and Northamptonshire County Council might get their heads together and secure the future of public transport across our little part of the world?

  
**Bosworth Tots**  
9.30am – 11.30am  
Husbands Bosworth Village Hall

**£2.50** First child  
**£1.50** Babies under 1  
**50p** for siblings

Stay & Play session ~ From birth to pre school  
Weekly activity ~ Snack time ~ Baby weighing scales  
Plenty of cuppas and a friendly welcome and chat!

Bring your little one(s) and join in the fun!  
Session Dates

Thursday 30th August	Thursday 1st November
Thursday 13th September	Thursday 15th November
Thursday 27th September	Thursday 29th November
Thursday 11th October	Thursday 13th December
Half term	Thursday 20th December

 **Bosworth Tots**



**IMPORTANT NOTICE**  
Due to falling numbers **Bosworth Tots** is changing session times to every other week from September.

## BUGLE POSTBAG

*From Luke Atkins – Golf Operations Manager, Kilworth Springs Golf Club*

Would you like to promote your business or enterprise to thousands of people every week, at an affordable price? We have a limited number of tee boards around our golf course, which we are now offering to local businesses to promote their activities.

If you are interested or would like more information, please contact Luke on 01858 575082 or via email at [admin@kilworthsprings.co.uk](mailto:admin@kilworthsprings.co.uk)

## POLICE FILE

### Recent criminal activity

- Burglary to recreational facility, Welford Road, Husbands Bosworth
- Shoplifting incident, High Street Stores, husbands Bosworth
- Theft from petrol filling station, North Kilworth
- Damage to parked vehicle, A5199 layby, Northampton Road, Welford
- Damage to two parked vehicles, Naseby Road, Welford
- Burglary to domestic premises, Westhorpe, Sibbertoft
- Theft from domestic outbuildings, Church Street, Sibbertoft

### LUTTERWORTH LOCAL POLICING UNIT

Leicestershire police have recently noted an increase in so called 'car key burglaries' across the county. Modern immobilisers and car security have greatly reduced the ability of casual thieves to steal your car without the specific key for the vehicle to deactivate the devices. The determined criminal has risen to the challenge and will now go to greater lengths to steal your car. Car key burglaries are where someone breaks into your home with the specific purpose of finding your car keys in order to steal your car.

Simple crime prevention measures can protect your car. The best advice is to hide your car keys and keep them well away from the front door, especially when you are not at home, in the back garden or at night. The safest bet is to have a secure hideaway at all times, well away from your main entry place into your home.

Steering wheel locks are becoming more popular again and can prevent the car being stolen even if someone has the keys - and they also act as a simple visual deterrent to the casual thief. The thief is likely to avoid the extra hassle of untangling a wheel-lock.

Of course, if your car has an alarm or immobiliser then make sure it is switched on, and park in well-lit areas and off the road if possible.

You can also have your vehicles windows etched with its registration number or the last seven digits of the vehicle identification number (VIN). This can put criminals off, as it makes your car more difficult to sell. It also makes it easier for the police to identify and/or return your vehicle if it is stolen.

### NORTHAMPTONSHIRE RURAL POLICING UNIT

Northamptonshire Police are appealing for information regarding a burglary which took place at an outlying farm on Elkington Road, Welford. It was particularly distressing as the owners returned to find the lounge windows smashed and an untidy search made and items stolen. Police Occurrence No: 18000324558

## THE BUGLE TEAM

### Editor:

Melvyn Forman  
10 Church Lane Tel: 880281  
Email: [bosworth\\_bugle@talk21.com](mailto:bosworth_bugle@talk21.com)

### Treasurer & Advertising:

Ralph Horton  
18 Highcroft Tel: 880526

### Contacts:

Mike & Sylvia Price  
3 Highcroft Tel: 880902

Jo Horton  
18 Highcroft. Tel: 880526

Frances Smith  
10 Butt Lane Tel: 880225

Penny Mattock  
9 Fernie Court Tel: 881140

Heather O'Connor  
16 Fernie Court Tel: 880165

### Postal Subscription & distribution:

Melvyn Forman Tel: 880281  
Email: [bosworth\\_bugle@talk21.com](mailto:bosworth_bugle@talk21.com)

[www.husbandsbosworth.info](http://www.husbandsbosworth.info)

**COPY DEADLINE**  
**15<sup>th</sup> OF THE MONTH**  
**PRECEDING PUBLICATION**

**LOCAL POLICING UNIT**  
**IF YOU HAVE INFORMATION ON ANY**  
**CRIMINAL ACTIVITY CALL MARKET**  
**LUTTERWORTH POLICE on 101**  
**Neighbourhood Watch Co-ordinator**

Stephen Bilbie  
[stephenbilbie@btinternet.com](mailto:stephenbilbie@btinternet.com)  
NW Community Scheme No. 2123  
**Eastern Counties Policing Team**

PC 1261 Andy Cooper  
PCSO 6569 Peter Willson  
PCSO 6008 Laura Bolton  
Voicemail Service 0116 2485675

**CRIMESTOPPERS**  
FREEPHONE 0800 555111  
**ACTION FRAUD**

[www.actionfraud.police.uk](http://www.actionfraud.police.uk)  
0300 123 2040



PLEASE CONTACT THOMAS  
FOR A NO OBLIGATION FREE QUOTE:  
07525064220  
[twlandpservices@outlook.com](mailto:twlandpservices@outlook.com)

**\*20% AUTUMN / WINTER DISCOUNT\***

Offering a wide range of Hard & Soft Landscaping:

- Fencing & Repairs
- Garden Maintaining & Clearance
- Tree & Hedge Pruning
- Turfing
- Driveway Installation & Maintenance
- Patio Installation & Maintenance
- Decking
- Timber Cabin, Shed, Stable & Garage Builds
- Ponds & Water Features
- Concrete Bases
- Household Repairs & Maintenance

## COMPLETE CAR CARE

Accident repair specialist  
Bodywork, dent, scratch and stone-chip repair  
Servicing, alloy refurbishment, welding  
MoT repair  
Valeting, full body polish  
Parking sensors, tyres & exhausts, etc. fitted  
Call Ben on 01858 880404

[bencompletecarcare@outlook.com](mailto:bencompletecarcare@outlook.com)

# BOSWORTH IN FOCUS

## A TASTE OF BOSWORTH

### Spiced Prawns

Serves 4

#### Ingredients

450g cooked peeled prawns  
3 tablespoons vegetable oil  
2 medium onions - finely chopped  
½ level teaspoon chilli powder  
½ level teaspoon turmeric  
1 level teaspoon ground coriander  
1 level teaspoon brown sugar  
4 cloves  
5 cm piece (2") cinnamon stick  
2 teaspoons grated fresh root ginger  
3 bay leaves, Salt  
4 tomatoes (skinned & chopped roughly)  
5 cm (2") cube creamed coconut

#### Method

Heat oil in large frying pan and gently fry the onions until golden brown. Add all the spices, sugar, bay leaves and seasonings and mix everything well for a few minutes, then add the tomatoes and bring up to simmering point. Now stir in the prawns and cook for 5 minutes, stirring constantly to coat with the spicy mixture. Turn heat to a very gentle simmer and crumble the creamed coconut into the mixture. Stir until dissolved and serve with accompaniments

Jackie Kerr

## WILD ABOUT BOSWORTH

### Grasshoppers and Crickets

Grasshoppers and crickets have been around for about 250 million years - since the Triassic Period. They belong to an order of insects with the scientific name *Orthoptera*, which includes bush-crickets (*katydid*s), crickets, locusts and grasshoppers. They begin life by hatching from an egg as a nymph, and as they grow they moult their exoskeleton five times, until becoming fully-grown adults.

So, how do you tell the difference between a grasshopper and a cricket?

The most visible difference is their antenna. Grasshopper antenna are short, as per the photograph, whilst cricket antenna sweep gracefully over the full length of their body. Grasshoppers are strictly vegetarian, but crickets are omnivorous scavengers that will eat rotting fruit, rotting leaves, vegetables and other insects. Generally, crickets are nocturnal and grasshoppers are diurnal. When it comes to making sounds, stridulating, grasshoppers rub their serrated legs against their wings, and crickets rub their wings together.

Predictably, it's the males that make the most noise; to attract females. Late in the year, grasshoppers lay their eggs in the soil, where they lie dormant until the following spring. There's a long list of creatures that view grasshoppers as food, including in some countries, Mexico, Thailand and Indonesia, humans.

Bush Crickets hold the world record for size of testicles, by percentage of body weight. In the Tuberous Bush-Cricket it reaches 14%. The human equivalent would be a 200lb man with testicles weighting 14lb each, or two stones...

For some reason, crickets are associated with being happy. Proverbially, when a cricket or grasshopper hops into your life, it's said joy and happiness are soon to follow. In Shakespeare's play, Henry IV, Prince Henry asks Poinc: "*Shall we be merry?*" Poinc answers: "*As merry as crickets, my lad!*"

Mike Chanter



## WEATHER LOG

### JUNE 2018

**Highest temp:** 32.2°C on June 25

**Lowest temp:** 7.3°C on June 6

**Air frosts:** 0

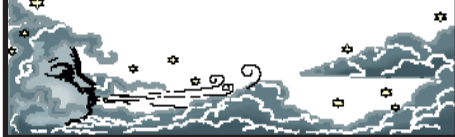
**Rainfall Total:** 2.1mm (0.08")

**Wettest day:** 1.2mm on June 16 (0.04")

**Rain days:** 4

**Snow:** 0

**Total sunshine:** 213.3 hours



## CHEERS FROM THE BELL INN

After the amazing success of their Sunday Carvery earlier this year, Nev and Michelle, at The Bell Inn, are introducing a 2-course seniors' lunch for £6.50, every Wednesday, from 12.00pm until 2.00pm. Call 01858 880967 Cheers!



## SULBY OPEN GARDENS

Sulby Gardens third opening for 2018 under the National Garden Scheme is earlier in August than usual, on Thursday, August 2nd, when we will be highlighting our ponds and wetlands, wildlife and butterfly garden. Entry is £4 per head, children free, homemade teas available, also plants and preserves in season. Open 2.00pm to 5.00pm. Stout footwear recommended

Copies of *The Story of Sulby Gardens* also on sale, including the history of *Sulby Hall*, *Husbands Bosworth Wartime Aerodrome* and the *Sulby Polish Resettlement Camp*.

CPRE award winner in 2017

**NCDecorating**  
A STROKE OF PERFECTION  
**Nobby Clarke**  
QUALITY PAINTING & DECORATING FOR OVER 25 YEARS  
07761040218  
ncdecorating.co.uk  
5 Lammas Close - Husbands Bosworth - Leicestershire - LE17 6LL

**Karting**  
Leicester Airport, Gartree Rd, Gt Stretton, Leicester. www.stretton2000.com  
The UK's Premier Karting experience  
850M floodlit racing circuit | Licensed Bar & Function room | Stag & Hen Parties  
Corporate & Team Building Activities | Childrens Parties  
60 Mph, 300cc Thunder Karts | Kart Club & Championship Races  
Junior Kart's Available | Gift Vouchers Available  
Arrive & Drive Sessions  
**Stretton Circuit 0116 259 2900**  
Open 7 days a week 10.00am - 9.00pm

# SCHOOL REPORT

HUSBANDS BOSWORTH C. of E. PRIMARY SCHOOL Head Teacher Alan Eathorne

## ACADEMIC YEAR DATES 2018/19

### Autumn Term

School opens: Thursday 30 August 2018 (for children)

### Half term break

Friday 12 October to Friday 19 October 2018

Schools closes: Friday 21 December 2018

### Spring Term

School opens: Monday 7 January 2019

### Half term break

Monday 18 February to Friday 22 February 2019

School closes: Friday 12 April 2019

### Summer Term

School opens: Monday 29 April 2019

May Day Bank Holiday: Monday 6 May 2019

Half term break: Monday 27 May to Friday 31 May 2019

School closes: Friday 12 July 2019

Husbands Bosworth C. of E. Primary School, School Lane, Husbands Bosworth, Lutterworth, Leicestershire. LE17 6JU  
Tel: 01858 880212 | Fax: 01858 880212 |  
Email: [office@husbandsbosworth.leics.sch.uk](mailto:office@husbandsbosworth.leics.sch.uk)

Husbands Bosworth School is part of Learn Academies Trust

Company Number: 08095439.

Registered UK address Learn Academies Trust, c/o Lubenham School, School Lane, Lubenham, Market Harborough, Leicestershire, LE16 9TW



## BYGONE BOSWORTH

Images from the Historical Society's Archive Collection

The Parish Council has recently been advised to register the village's Welford Road cemetery site and has been trying to locate the deeds. The subsequent search has unearthed some interesting things, not least the Parish Council minutes book, which turned up in the County Records Office at Wigston.

At the meeting of the Burial Board on 13<sup>th</sup> October 1858, the sum of £330 was allocated for the purchase of the land from one Rev. John Longhurst, rector of Dunton Bassett. That Rev. Longhurst was the seller poses some questions, but at that time most clergy were of 'independent means', with no income other than their own funds and he may have held this plot, amongst others, as an investment. Funds from the Queen Anne's' Bounty Act 1714 were also used to augment low-income livings, and were usually used to purchase land, which would return an income. [Queen Anne's Bounty was a scheme that restored to the Church money that Henry VIII had misappropriated for his own use after the dissolution of the monasteries.]

The parish council appears to have taken possession in May 1858, prior to the purchase and paid a rent for the interim period. Presumably this time was spent establishing the plot from the open field. The first recorded interment is of a 7-week old infant, Alfred Church, in September 1858. At the meeting in October, the Clerk was instructed to employ one Isaac Bailey to cut the hedge and clean the ditch and fence with post and rail palings, to be painted stone coloured!

Today, at first glance it appears that there is plenty of empty space in the cemetery, but in actual fact it is virtually full, with over 1,400 souls buried there. However, a recent assessment estimated that, with the space in the 'new' section, the cemetery will be adequate for more than 60 years at the present rate of 'demise'...

## TRADE DIRECTORY 2018

**Armoureddon Tank Paintballing Centre**  
Military vehicles, paintball & outdoor activities  
Contact: Tracey 01858 880239

**Croft Farm Bed & Breakfast**  
AA 4\*\*\*\* accommodation  
Contact: Jane Smith 880679

**Mike Price Heating Engineer**  
Oil-fired boiler servicing & repair  
Contact: Mike Price 880902

**Totally Trees Ltd.**  
Tree surgery and stump grinding  
Contact: Jacqui Mitchell 01455 554182

**Woodpecker Tree Surgery**  
All aspects of tree surgery undertaken  
Contact: Chris Wright 880818

**FOUR SEASONS**  
FOURSEASONSPGS@GMAIL.COM  
07483829830  
LEICESTERSHIRE

FLAT ROLLING • GRASS TOPPING • CHAIN HARROWING • FENCING  
LAWN MOWING • HEDGE TRIMMING • GENERAL GARDEN MAINTENANCE

**ARMOURGEDDON**  
Military Museum  
One of the Largest Collections of  
WWII Vehicles and Militaria in the Midlands.

Our under cover collection includes post war vehicles, Main Battle Tanks, as well as an excellent selection of other American, German and British vehicles. With interactive displays and lots of things to see. Visit on a game day (Saturday, Sunday or selected Wednesday—April to October) and you will get to see some of our vehicles driving around.

01858 880 239  
Chat to us Online  
[www.armoureddon.co.uk](http://www.armoureddon.co.uk)

Office hours Monday to Friday 0900hrs—1700hrs

# ACTIVITY & INTEREST GROUPS

ACTIVITY GROUPS 2018	
<b>All Saints Parochial Church Council</b>	Contact: Diana Jones 880741
<b>Baby-Sitting Circle</b>	Contact: Claire Scott 880295
<b>Badminton Club</b>	Contact: Ralph Horton 880526
<b>Beaver Scout Troop</b>	Contact: Norman Byrd 07973 532678
<b>Bosworth Tots</b>	Contact: bosworthtots@hotmail.co.uk
<b>Conservative Association</b>	Contact: Sue Fisher 880026
<b>Craft Group</b>	Contact: Gail Wilmot 880413
<b>Girlguiding Rainbows &amp; Brownies</b>	Contact: Bonnie Kettell 882148
<b>Historical Society</b>	Contact: Melvyn Forman 880281
<b>1st Kilworth Scouts/Beaver unit</b>	Contact: Charles Lauder Jr. 01162 478430
<b>Lutterworth African Drumming Group</b>	Contact: Ralph Horton 880526
<b>Methodist Church Council</b>	Contact: Rev. A Murphy 462889
<b>Millennium Woodland Trust</b>	Contact: Jackie Fletcher 880910
<b>Royal British Legion</b>	Contact: Robert Maxwell 880361
<b>South Kilworth Art Club</b>	Contact: Maggie Roberts 01858 682173
<b>Tennis Club</b>	Contact: Jennifer Rogers 880401
<b>Workers Education Association</b>	Contact: Sally Sherratt 571064

## FAMOUS LOROS COFFEE MORNING

Penny is hosting her annual LOROS Coffee Morning this year on Saturday, August 11<sup>th</sup> at 9 Fernie Court, 10.00am to 12.30pm. As usual entrance is free but a donation is appreciated. There is a raffle and you can eat as many cakes as you please! Donations of cakes would be most welcome. Thank you.

*Penny Mattock*

**VILLAGE HALL BOOKINGS**  
**01858 880426    07766022901**  
 husbandsbosworthvh@gmail.com  
[www.husbandsbosworthvillagehall.co.uk](http://www.husbandsbosworthvillagehall.co.uk)  
**SPORTS PAVILION ENQUIRIES**  
**Audrey Marlow 880316**

## HISTORICAL SOCIETY

The Historical Society's Winter Season will start on Wednesday, September 5<sup>th</sup> at 7.30pm in the Sports Pavilion.

Our old friend, Brian Johnson, will be opening up proceedings for our first meeting and setting us off on the trail of family history research.

Annual subscriptions (£12.00) will be taken at this meeting. Non-members are always welcome as visitors, when a door charge of £2.50 per meeting is requested.

A full Programme of Meetings 2018-19 is available on request or on the village website: [www.husbandsbosworth.info](http://www.husbandsbosworth.info)

## CRAFT GROUP

The Craft Group meets on the second Wednesday of each month in the Committee Room of the Village Hall. This is a friendly gathering where you can pick up new ideas and practise your craft, away from the distractions of home life.

Call Gail on 880413.

## CAUSEWAY SUMMER OUTING

The Causeway Coffee group annual summer outing in July was to Dobbies Garden Centre, near Atherstone. Fourteen village worthies and helpers enjoyed a leisurely look around the wide range of garden and gardening products and the numerous major shopping outlets. The afternoon was rounded off nicely with an excellent traditional English cream tea and Melvyn's Mystery Tour to avoid the A5 traffic snarl-ups on the way home!

Causeway Coffee mornings are Friendly social meetings held on the second Friday of each month at the Sports Pavilion, Kilworth Road and are especially aimed at those residents of the parish who are elderly, living alone or retired.

The Causeway is supported by income from charity lands that have been held in trust by the parish for over 400 years, so there is no charge for anything. Transport can be arranged for those who would find it difficult getting to the venue.

For more information call Heather 880165.

## DIARY DATE

Conker Championships & Welly Wanging Competition, on Sunday October 7<sup>th</sup> from 10.00am Sports Field.

Full details in next month's *Bugle*.

## VILLAGE LUNCH

The next Village Lunch will be on Thursday August 30<sup>th</sup> at 12.30pm, Kilworth Springs Golf Club.

The Village Lunch is a great place to meet up with old friends in a friendly atmosphere, whilst enjoying a top-class 2-course lunch. If you are new to the area it's a good place to get to know people and make new friends. The cost is only £10 per person, to include coffee/tea and mints. Call Janice on 880668 to book a place or for further information.

## MILLENNIUM WOOD

The next Woodland work party morning will be on Saturday, August 18<sup>th</sup>, 9.30am to 12.30pm. All welcome.

The Millennium Wood is the community woodland for Husbands Bosworth and is situated on Mill Lane, off Kilworth Road. The facility is run by trustees and a small group of volunteers for the benefit of the community. For more information about volunteering please call Jackie on 880910.



## WOODPECKER TREE SURGERY

All aspects of tree-work undertaken from dismantling large roadside trees to pruning and reshaping small garden trees.

We also offer a stump grinding service.

Professionally qualified and insured.

For free quotation and advice call

Chris on: 01858 434591

[www.woodpeckertreesurgery.co.uk](http://www.woodpeckertreesurgery.co.uk)

## 'JJ's Kiddycare'



\*OUTSTANDING\* Ofsted grading

\* FREE Pre-school sessions for 2, 3 & 4 year olds

\* Full Day Care 0-5yrs

Situated on a farm site between South Kilworth and Welford

\* Breakfast and After School clubs. (4-14years)

\* Holiday Clubs during all Northants & Leics school breaks

Tel no. 01858 575642

[www.jjs-kiddycare.co.uk](http://www.jjs-kiddycare.co.uk)



# PARISH COUNCIL NEWS

## PARISH COUNCIL REPORT

There was no Parish Council meeting in July. The next meeting of husbands Bosworth Parish Council will be on Tuesday, August 7<sup>th</sup> at 7.30pm in the Committee Room, of the Village Hall. This is an open meeting and members of the public are free to attend. Visitors will be invited to address the meeting before formal business is conducted.

## DOGS ON THE PLAYING FIELD

Dog owners are reminded that dogs are not allowed on the village Playing Field or Children's Recreation Area, at any time. Even if you 'clean up' after your dog, parasites that can cause serious eye problems and blindness in humans can be left on the grass.

If you see anyone exercising their dogs on these areas please contact the Parish Clerk on 881109 or email: [clerk@husbandsbosworthpc.org.uk](mailto:clerk@husbandsbosworthpc.org.uk)

## BROADBAND BOSWORTH

A meeting of Superfast Broadband stakeholders was held recently at County Hall and Parish Councillor, Patricia Hobson attended on behalf of Bosworth residents.

The most challenging phase of the programme is to provide access to fibre broadband for the remaining 3% of Leicestershire residents, mainly in the more rural areas, including many outlying properties in our parish, who have poor service or no access.

Good news for some Bosworth residents is that an area to the north of the village is due for upgrading very soon, which could bring speeds of up to 80 mbps for normal fibre products and potentially up to 330 mbps, depending on the contract chosen. There is no news yet about other peripheral areas of the parish, but many other possible solutions are being considered before the expected end to the programme in 2020.

If you have any issues relating to Broadband provision within the parish please contact the Parish Council lead on Broadband, Patricia Hobson on 880070.

## NEIGHBOURHOOD PLAN UPDATE

The intent little groups of villagers that have wandered around the parish clutching notepads, maps and clipboards are into the process of analysing their findings and using them to draft sections of the Neighbourhood Plan.

These little groups were researching a designated theme, to use as evidence on which policies will be written that will influence the future of the whole of the Husbands Bosworth Parish. The Themes are:

- Housing & the Built Environment
- Natural & Historic Environment
- Accessibility & Transport, Community Facilities & Economic Growth

The next stage of the process is to draw up the policies that will provide the legal binding for our 'blueprint' for the future of Bosworth.

The next Neighbourhood Plan Advisory Committee will focus on the progress of the Policies and any new strategies that may need to be put in to place.

This is all part of the process to ensure that the Neighbourhood Plan provides the best deal for the future of our community.

## PARISH OFFICE HOURS

**Monday Closed**

**Tuesday 14:45 – 17:45**

**Wednesday 08:30 – 10:30**

**Thursday 15:45 – 17:45**

**Friday 08:45 – 11:45**

**Saturday 10:00 - 12:00 3<sup>rd</sup> Sat. ONLY**

**Sunday Closed**

**2a Mowsley Road**

**Tel: 881109**

**[clerk@husbandsbosworthpc.org.uk](mailto:clerk@husbandsbosworthpc.org.uk)**

## SID REPORT

Readings from the Speed Indicator Device

### Welford Road inbound

Period: 20.06.18 - 27.06.18

Vehicle movements: 9922 Av./day: 1418

Average speed: 28.94mph

*Highest recorded speed: 56mph*

### Kilworth Road easterly

Period: 27.06.18 - 04.07.18

Vehicle movements: 13606 Av./day: 1947

Average speed: 34.75mph

*Highest recorded speed: 68mph*

### Kilworth Road easterly

Period: 04.07.18 - 11.07.18

Vehicle movements: 13605 Av./day: 1947

Average speed: 35.51mph

*Highest recorded speed: 69mph*

### Kilworth Road outbound

Period: 11.07.18 - 18.07.18

Vehicle movements: 13554 Av./day: 1936

Average speed: 31.99mph

*Highest recorded speed: 61mph*

## LOCAL OFFICERS

### Husbands Bosworth Parish Council:

#### Councillors

William Fletcher (Chairman)

Melvyn Forman

Susan Fisher

Patricia Hobson

James Shelley

#### Parish Clerk

Sarah Mason

2a Mowsley Road

H.B. LE17 6LR

Tel: 881109

[clerk@husbandsbosworthpc.org.uk](mailto:clerk@husbandsbosworthpc.org.uk)

#### District Councillor

Lesley Bowles

[l.bowles@harborough.gov.uk](mailto:l.bowles@harborough.gov.uk)

#### County Councillor

Blake Pain

Tel: 01858 411021

[blake.pain@leics.gov.uk](mailto:blake.pain@leics.gov.uk)

#### Member of Parliament

Neil O'Brien

Tel: 0207 2191802

[neil.obrien.mp@parliament.uk](mailto:neil.obrien.mp@parliament.uk)



## P.C. BUILDING SERVICES LTD

Established  
27 years



Complete building service  
Specialist in new build  
Quality renovations  
& Extensions

**Tel/Fax 01858 881202**

**Email: [pcbuildserv@btinternet.com](mailto:pcbuildserv@btinternet.com)**

Walton Grange, Bosworth Road  
Walton, Lutterworth, Leics LE17 5RW

## STEFAN the HANDYMAN

- Quality woodwork
- Painting
- Tiling
- DIY
- Repairs
- Home maintenance, and lots more...!

*Not sure it's a job for Stefan? Just pick up the phone and ask!*

**01858 881775**

[StefantheHandyman@outlook.com](mailto:StefantheHandyman@outlook.com)

Facebook: @StefantheHandyman



# CHURCH NEWS

All Saints Parish Church, Methodist Chapel & St. Mary's Roman Catholic Church

## WORD FROM THE RECTORY

It is always fatal to make a statement about a building job before the job is completed! Last month we claimed there were no extras involved in our roof repair, but you will see that the scaffolding is still up around the church, as the work is still not complete. Unfortunately, before the work can be finally completed we need some coping stones repaired and we await the arrival of the stonemason before the last bits can be finished off. Hopefully by the time you read this, it will be done and the church roof ready to face the future.

With the church roof weatherproof once again, we can turn our thoughts to what happens inside the building. This autumn we look forward to a visit from Bishop Martyn, Bishop of Leicester and some curates and ordinands currently in training. They come on the weekend of September 21<sup>st</sup>/22<sup>nd</sup> and will be visiting the village school, as well as visiting the church. There will be more details of the events of that weekend in the next issue of the *Bugle*.

We are also looking forward to our Harvest Festival and a 'Bring & Share' meal in October. Then in November we have our Festival of Remembrance, when we will remember those who have fought in defence of our country. Over Remembrance weekend, as well as our usual service at the War Memorial on Sunday, November 11<sup>th</sup>, we are also inviting community groups to share in decorating our church with poppies or other reminders of the fight for peace and justice so many have engaged in. One hundred years since the end of the The Great War seems worth marking, and the sacrifice of the many worth remembering. Once we have remembered the fallen it will not be long until our Christmas Tree Festival once again, and all the things the Christmas season brings!

The life of the Church continues, whether it be for these festivals that are planned for the autumn, for our regular weekly worship, or for private prayer. The Parochial Church Council maintain the church building for the use by the parish as well as for worship - it is your parish church - do come and use it and be a part of its life, and thank you to all of you who support the church in any way. Have a good summer. *Liz*

## KNAPTOFT

Open air services within the evocative ruins of St. Nicholas Church, Knaptoft continue on Sunday, August 19<sup>th</sup> at 3.00pm..

This service will be led by Rev. Dave Hover, Assistant Curate at St. Andrews Countesthorpe.

This year we are trying a slightly different format for our outdoor services, with some new wording - come along to this special venue and experience the unique atmosphere.

As usual, our friends from Fleckney Silver Band will provide the musical accompaniment.

Knaptoft Church will be one of the 'staging posts' on the *Ride & Stride* sponsored fund-raising event on September 12<sup>th</sup>.

Our Harvest Festival Service will be on Sunday, September 16<sup>th</sup>.

## ALL SAINTS FLOWER ROTA

### August:

*Eleanor Murphy*

Call Heather O'Connor on 880165

if you would like to join the Flower Rota

## HELP NEED...

All saints' churchyard is classed as a 'closed' churchyard and is administered by the local authority, Harborough District Council, who employs a contractor to cut the grass. There is no provision for maintaining the flower beds or Memorial Garden, and in the past this has been undertaken by volunteers and occasional work by a professional gardener.

We would like to set up a group of volunteers to resurrect the flower beds and keep it them good order so that people can go to sit, rest, reflect and remember. Call Rev. Liuz on 880351 or Di on 880741 if you would like to help.

## †CHURCH SERVICES †

### Hexagon Benefice

- 5 9.30am joint service at Shearsby  
11.00am Communion Thed.  
11.00am Morning Prayer B'thorpe  
6.00pm Communion Arnesby
- 12 9.00am joint service at Shearsby  
11.00am Communion HB  
4.00pm Patronal Service at B'thorpe  
6.00pm Evensong Mowsley
- 19 10.30am United Benefice  
Communion Service B'thorpe  
3.00pm Knaptoft Service
- 26 9.00am joint service at Shearsby  
9.00am Morning Prtayer Mowsley  
11.00am joint communion at Arnesby  
4.30pm Promise Keepers HB

*Short Communion every Wed. 9.15am HB*

### Churchwarden:

Diana Jones 880741

### Rector:

Liz Bickley 880351

### Methodist Church

- 5 Rev Andrew Murphy (Com.)  
12 10.15am Market Harborough  
19 Mrs Christine Hodgson  
26 10.30am Join with All Saints  
*Chapel services Sunday 4.30pm.  
All Welcome*

### Contacts:

Rev. Andrew Murphy 462889

Senior Church Steward:

Mr. A Lloyd Jones 880343

## St Mary's Roman Catholic Church

*Services every Sunday 8.30am.*

### Contact:

Robert Constable-Maxwell 880361

Father Owen O'Neil 462359



## Scott Clarke Building

07725 552566

01858 880863

sclarkebuilding@outlook.com

Alterations  
Extensions  
Plastering  
Hard-landscaping  
Block-paving  
General Building Works  
For free quote or design ideas call Scott



## F&W Plumbing & Heating Services Ltd

22 Elmcroft Road, North Kilworth, LE176HX

Bespoke bathroom & kitchen design and installation

All types of wall and floor tiling

Hot and cold water systems

Gas-fired boiler installations and system upgrades

Unvented hot water systems

Gas Safe and Bepec registered

Contact Jason on 07866741261

Email: jayspanner@btinternet.com

www.fandwplumbingandheatingservices.co.uk

*Over 30 years experience in designing and installing contemporary and traditional kitchens and bathrooms*

*Project manage personally with all associated trades for a co-ordinated high quality finish with minimum disruption*

## DIARY DATES for AUGUST

Thursday 2 <sup>nd</sup>	Sulby Open Gardens, 2.00pm - 5.00pm Sulby
Tuesday 7 <sup>th</sup>	Parish Council meeting, 7.30pm Committee Room, Village Hall
Friday 10 <sup>th</sup>	Causeway Coffee Morning, 10.00am - 12.30pm Sports Pavilion
Saturday 11 <sup>th</sup>	Penny's LOROS Coffee Morning, 10.00am - 12.30pm, 9 Fernie Court
Friday 17 <sup>th</sup>	Mobile library
Saturday 18 <sup>th</sup>	Millennium Wood work party, 9.30am - 12.30pm
Thursday 30 <sup>th</sup>	Village Lunch, 12.30pm Kilworth Springs Golf Club

## FORTHCOMING EVENTS

Tues. Sept. 4 <sup>th</sup>	Parish Council meeting
Sat. Sept. 22 <sup>nd</sup>	Millennium Wood work party ( <i>Note: date changed</i> )
Sat. Sept. 22 <sup>nd</sup>	'70s' Fancy Dress Disco
Tues. Sept. 25 <sup>th</sup>	Village Lunch
Sunday Oct. 7 <sup>th</sup>	Conker Championships & Welly Wanging
Fri. October 26 <sup>th</sup>	Pudding Evening
Sat. January 12 <sup>th</sup> 2019	<i>Govannen</i> return!

### LOCAL PLANNING NEWS

**The following applications have been submitted to Harborough District Council:**

- 18/01060/FUL - retrospective application; replace agricultural buildings, Woodside Farm, Theddingworth Road
- 18/01121/FUL - retrospective application; repairs to a roadside wall, Hillcrest Lane

#### Recently determined applications:

- 18/00860/FUL Removal of a dangerous wall and rebuild wall (retrospective) 5 Hillcrest Lane (Approved)
  - 18/00870/FUL Erection of 12 equestrian stables and roof over existing manege. Land off Leicester Road (Approved)
  - 18/00873/FUL Installation of electronic external roller shutters. Springfield Supermarkets 6 High Street (Approved)
- Current applications may be inspected during normal working hours at the Council Offices, The Symington Building, Adam & Eve Street, Market Harborough. Comments concerning planning applications should be addressed to the Development Control Manager.*
- Planning applications and other aspects of local government can now be viewed on-line at [www.harboroughonline.co.uk](http://www.harboroughonline.co.uk)**

### MOBILE LIBRARY

#### NOTE CHANGES TO SERVICE

*The Mobile Library will now be calling on the third Friday of each month.*

#### STOPS & TIMES

School, Welford Road:	10.35am - 11.35am
Berridges Lane:	11.40am - 12.20pm
Butt Lane:	12.25pm - 1.00pm

Now lending *Talking Books* on CD & tape

\*\*\*\*\* You can now renew on-line or by phone \*\*\*\*\*

### BUGLE.....FREE ADS.

Email: [bosworth\\_bugle@talk21.com](mailto:bosworth_bugle@talk21.com)

#### FOR SALE

9 meeting room chairs, grey +2 with arms (Good condition) offers

Small nursery chairs for children, 15 blue & 8 red offers

Banqueting chairs, 63 reasonable condition £1 each

*In aid of Church Funds*

Contact: Di Jones 880741



Station Road, North Kilworth, Lutterworth,  
Leicestershire LE17 6JB.  
01858 881723, 07977909806  
[northkilworthwharf@tiscali.co.uk](mailto:northkilworthwharf@tiscali.co.uk)  
[www.northkilworthwharf.com](http://www.northkilworthwharf.com)

DAY BOAT HIRE  
from £120

LOCAL COAL  
DELIVERY from £9.90  
for 25kg bag

## MIKE PRICE HEATING

Oil-fired boiler & heating systems  
Servicing & Repairs

Ring 0771 4245290 mobile  
01858 880902 home

*Your local technician - on your doorstep*

