

DEVELOPMENT POTENTIAL

There's no doubt that a new development of any substance will alter the dynamics of the community into which it is introduced. With new residents, new demands and expectations arise. The Town & Country Planning Act 1990 acknowledges this by seeking funding, known as a Section 106 contribution, from developers to help offset the direct effects of their development.

Some of this goes towards highway improvements, some to the police, fire and education authorities and some into local authority coffers. As we have seen recently in Husbands Bosworth, it can, in some cases, also support something special, like the provision of a new medical centre. Surprisingly, some even trickles down to parish level, for the Parish Council to administer.

On the table at present is the parish's share of the funding generated by the Marsh Drive development off Welford Road and it amounts to almost £30,000.

The main criteria is that the funding helps to support the extra burden imposed by the influx of new residents, perhaps by providing new community facilities. However, under some circumstances, it may also be used to extend existing facilities to improve or enhance their utilisation by the fresh, and potentially wider user-base.

Community groups that are able to present a proposal or project that fits the criteria can apply for a share of the fund. Projects that are particularly favoured are those that support disadvantaged or less-well represented groups. Projects that promote or improve access to sport, health and well-being and those that broaden the use of an existing facility across a wider section of the community are also welcomed. The Parish Council will shortly be hosting a special meeting for interested community groups. Watch this space...



BOSFEST 2018

The success of Bosworth Festival, as we noted last month, has meant that the organising committee has been able to distribute over £6,000 to local charities and good causes this year. Increased donations have been made to the eight 'headline' charities; those that feature on the advertising and banners and, closer to home, fifteen local groups and 'good causes' have also benefited from the event. The Festival Committee would like to take this opportunity to thank everyone who helped in any way to make the event so successful; the sponsors, businesses, the local groups and of course, Robert and Susan Maxwell, and David Cook for the use of the Park for the event.

THE BATTLE'S OVER...

Remembrance Sunday this year will be particularly poignant as, not only will we be commemorating the ending of the Great War, exactly 100 years to the day that the armistice was signed between the Allies and Germany and the guns finally fell silent, but also that November 11th actually falls on the Sunday.

In Husbands Bosworth we will be remembering with our traditional British Legion-led parade from the Old Green to the War Memorial, the reading of the names of those on the memorial and the sounding of The Last Post followed by the Service of Remembrance in church.

In church there will be floral tributes and historical displays relating to those of our parish who gave their lives in the Great War and artefacts from the Historical Society Archive.

Later, as darkness falls, and as part of this historic day, we will be hosting a commemorative event on the Sports Field, when, at 7.00pm, as part of the national chain of 1,400 *Beacons of Light* across the country, we will be lighting the village beacon. Tributes will be read and the Last Post will be sounded - all rounded off with piping hot soup for everyone, served in the Sports Pavilion.

**BATTLE'S
OVER**

A NATION'S TRIBUTE
11TH NOVEMBER 2018
100 YEARS OF REMEMBRANCE

PARISH COUNCIL SURGERY

The Parish Council will be holding regular surgeries at the Parish Office, 2a Mowsley Road, on the third Saturday of each month.

If you have any matter of parish council or community business that you would like to discuss with a parish councillor please come along for an informal chat over a cup of tea (or coffee...) and biscuit.

Copies of current planning applications will be available to view and discuss. Call the Parish Office on 881109 if you would like any further information.

Dates:

Saturday September 15th
Saturday October 20th
Saturday November 17th
Saturday December 15th
All 10.00am - 12.00pm

BUGLE POSTBAG

From Penny Mattock, Fernie Court

A huge thank you to everyone who supported my recent LOROS coffee morning. It was lovely to see so many people who came along to enjoy the coffee and many delicious cakes. So a big thank you to all the cake makers, you really did us proud... It was a fantastic show and such a variety and all the cakes went by the end of the morning.

It was very good of the weather to oblige too, after a mixed Friday and followed by a miserable Sunday, the warm Saturday morning shone like a jewel!

Thanks to everyone's generosity the coffee morning made £860.85 for LOROS, which is an amazing amount.

Thanks must go to the coffee makers, Jill and Janice, who worked tirelessly all morning to ensure no one went thirsty for too long!! And not forgetting all the other people who worked hard too. Once again my heartfelt thanks to Husbands Bosworth folk and to friends from further afield.

PS. I have a green dinner plate and a tray saying 'freshly brewed coffee...' on it, and also a small white plate left over from last year!! Please let me know if any belong to you and I will return them. Thank you.

From Sallyann Asherden, The Gliding Centre

Got some time on your hands mid-week? The Gliding Centre at Husbands Bosworth is looking for volunteers to help run our busy and active airfield. NO experience is necessary, as full training will be given.

This is a job that will get you out in the fresh air and give you the opportunity to meet many new friends. Duties will include, ferrying people around the airfield with our fleet of golf buggies, launching and retrieving gliders, using signalling and communication equipment, keeping flight records, meeting-and-greeting the public and much more...

All we ask is a commitment to two regular weekdays a month (or as many as you're prepared to give). In return you will have full flying rights with any flying you do at members rates (up until you achieve solo status) as well as the use of our bar and social facilities. Interested? Contact our office on 880521 or email sally@theglidingcentre.co.uk

POLICE FILE

Leicestershire Road Safety Partnership

Within the parish of Husbands Bosworth the Mobile Safety Camera Van is only able to be sited on the A4304 through the village itself. In the past 12 months there have been 9 visits to the village, resulting in almost 17 hours of speed enforcement. A total of 24 speeding offences have been recorded during this time.

Any action by the Safety Camera Team does not preclude Police Officers enforcing Traffic Laws as part of their regular duties, but this would be the responsibility of the Local Neighbourhood Policing Inspector.

WALCOTE AVERAGE SPEED CAMERAS GO 'LIVE' IN SEPTEMBER

Ok, so we thought that they were active now... Presumably they've had to be calibrated and 'tweaked' a bit since they were installed a couple of months ago, but the official word is that they will be fully 'enforcing' some time in September.

THE BUGLE TEAM

Editor:

Melvyn Forman
10 Church Lane Tel: 880281
Email: bosworth_bugle@talk21.com

Treasurer & Advertising:

Ralph Horton
18 Highcroft Tel: 880526

Contacts:

Mike & Sylvia Price
3 Highcroft Tel: 880902

Jo Horton
18 Highcroft. Tel: 880526

Frances Smith
10 Butt Lane Tel: 880225

Penny Mattock
9 Fernie Court Tel: 881140

Heather O'Connor
16 Fernie Court Tel: 880165

Postal Subscription & distribution:

Melvyn Forman Tel: 880281
Email: bosworth_bugle@talk21.com

www.husbandsbosworth.info

COPY DEADLINE
15th OF THE MONTH
PRECEDING PUBLICATION

POLICE FILE

IF YOU HAVE INFORMATION ON ANY
CRIMINAL ACTIVITY CALL MARKET
HARBOROUGH POLICE on 101

Neighbourhood Watch Co-ordinator

Stephen Bilbie
stephenbilbie@btinternet.com
NW Community Scheme No. 2123

Eastern Counties Policing Team

PC 1261 Andy Cooper
PCSO 6569 Peter Willson
PCSO 6008 Laura Bolton
Voicemail Service 0116 2485675

CRIMESTOPPERS

FREephone 0800 555111

ACTION FRAUD

www.actionfraud.police.uk
0300 123 2040



Scott Clarke Building

07725 552566
01858 880863
sclarkebuilding@outlook.com

Alterations
Extensions
Plastering
Hard-landscaping
Block-paving
General Building Works
For free quote or design ideas call Scott



MIKE PRICE HEATING

Oil -fired boiler & heating systems
Servicing & Repairs

Ring 0771 4245290 mobile
01858 880902 home

Your local technician - on your doorstep



BOSWORTH IN FOCUS

A TASTE OF BOSWORTH

Lemon Meringue Ice cream cake

Serves 6

A very quick and easy to prepare dessert that can be made a day in advance. Place in the fridge 20 mins before serving so it softens slightly if you prepare in advance.

Ingredients

1 x bought slab of Madeira cake

8 meringue nests

500ml tub crème fraîche

Jar good quality lemon curd

Red summer berries to decorate

Method

Line the base of a 20cm round springform cake tin with greaseproof paper. Cut the Madeira cake into 1cm slices and use to line the base of the tin filling in any gaps with small pieces of cake.

Break meringues into pieces and put into a large bowl. Tip in the crème fraîche and fold together. Dollop large spoonfuls of the mixture and lemon curd into the tin. Do not stir. Level with a palette knife, then tap the tin on the counter surface to make sure the mixture is packed down. Freeze for at least 4 hours, or overnight. To serve remove cake from the tin and put on a serving plate - decorate with summer berries.

Jackie Kerr

WILD ABOUT BOSWORTH

Tansy - *Tanacetum vulgare*

Those bright yellow bouquets of flowers that colour the roadside are Tansy. The word 'Tansy' comes from Greek for 'everlasting.' When Zeus abducted the beautiful youth Ganymede to act as a cup-bearer to the gods, he gave him a Tansy drink to make him immortal. A feature of the plant is its scent of camphor, which acts as a deterrent to most insects. The odour originates from toxic compounds manufactured by the plant. This characteristic makes it useful as an insect repellent. Additionally, it makes an excellent 'companion plant.' Studies have shown it's very effective at protecting potatoes from Colorado Beetles. So, if your prize veg is suffering insect damage, try planting some tansy to stand guard over your entry to the village Horticultural Show.

Historically, herbalists have claimed tansy can cure everything from acne to the zoster virus. However, most medicinal claims have now been discredited. Indeed, excessive consumption of the herb has been shown to cause liver damage, convulsions and miscarriages. Though, when applied externally, it's a practical treatment for lice, fleas and scabies.

While it's toxic in large quantities, as a flavouring, tansy has been used in recipes for millennia. I once added a single leaf, finely chopped to an omelette, and it introduced an agreeable peppery taste. Traditionally, it's also been added to puddings and biscuits. The herbalist John Gerard (c.1545-1612) noted that tansy was well known as 'pleasant in taste' and was an effective treatment for gout. And when consumed during lent, tansy was thought to control flatulence brought on by days of eating fish and pulses.

So, all in all, not just a roadside weed.

Mike Chanter



GIVE IT SOME MORE WELLY

The best Conker and Welly Wanging Championships within 20 miles south of Leicester will be back for the tenth anniversary celebrations on Sunday, October 7th on the Village Playing Fields from 11.00am until mid-afternoon. Advance registration for Conkers is preferred but not essential, whereas the Welly Wanging is just 'turn up and throw'... Classes for all ages in both competitions. Teams of 4 for adult Conkers.

Our two main charities this year will be *Age UK* and *Rainbows Children's Hospice*, plus we also hope to help other worthwhile causes within the village.

As usual we would welcome donations of paperback books, tombola prizes or cakes etc for our refreshments. Also any offers of help on the day, however limited, would also be greatly appreciated.

Let us know if you are involved with an organisation in the village and wish to run a stall to raise funds and promote your group.

Most importantly, please come along to support us, cheer on the contestants, meet your friends and have a 'cracking' good time!

Contact either Ralph on 880526 or Sue on 881251 for more information.

SULBY GARDENS APPLE DAYS

Extended to two-day event! Thursday, October 11th, 1.00pm to 4.00pm and Friday 12th 11.00am to 4.00pm.

An amazing display of apples - 130 varieties were on show last year! The orchard will be open to the public, with notes about each tree. Our new season *Sulby Gardens Apple Juice* will be for sale and apple-themed cakes for tea.

Horticulturalist Bill Barker will be available at specific times each day to answer your questions about apples.

Entry to garden £4 for adults, free for children. Tea and homemade cake £3 per head. *Stout footwear recommended*

WOODPECKER TREE SURGERY

All aspects of tree-work undertaken from dismantling large roadside trees to pruning and reshaping small garden trees.

We also offer a stump grinding service.

Professionally qualified and insured.

For free quotation and advice call

Chris on: 01858 434591

www.woodpeckertreesurgery.co.uk



PLEASE CONTACT THOMAS
FOR A NO OBLIGATION FREE QUOTE:
07525064220
twlandpservices@outlook.com

20% AUTUMN / WINTER DISCOUNT

Offering a wide range of Hard & Soft Landscaping:

- Fencing & Repairs
- Garden Maintaining & Clearance
- Tree & Hedge Pruning
- Turfing
- Driveway Installation & Maintenance
- Patio Installation & Maintenance
- Decking
- Timber Cabin, Shed, Stable & Garage Builds
- Ponds & Water Features
- Concrete Bases
- Household Repairs & Maintenance

SCHOOL REPORT

HUSBANDS BOSWORTH C. of E. PRIMARY SCHOOL Head Teacher Alan Eathorne

Husbands Bosworth C. of E. Primary School, School Lane, Husbands Bosworth, Lutterworth, Leicestershire. LE17 6JU

Tel: 01858 880212 | Fax: 01858 880212 | Email: office@husbandsbosworth.leics.sch.uk

Husbands Bosworth School is part of Learn Academies Trust

Company Number: 08095439.

Registered UK address Learn Academies Trust, c/o Lubenham School, School Lane, Lubenham, Market Harborough, Leicestershire, LE16 9TW

ACTION FOR CHILDREN DISCO

Following hot on the heels of the success of last year's 80s disco we will be hosting a 70s disco in the Village Hall, for 'Action for Children' on Saturday, September 22nd. We are hoping to encourage more people this year, with it being 70s, old and young alike...

Instead of running a marathon or biking around the country, do you fancy raising money by dancing to 70s music? What better way to burn some calories, meet local people and do some good for children less fortunate than our own. No tedious fund raising or collecting of donations required, just purchase a ticket for this years Action for Children charity 70s disco and be part of a community effort to raise money for an amazing charity that helps vulnerable, neglected children and young people and their families, throughout the UK.

So get your glad rags on (fancy dress is optional but we know that most people in Bosworth just love to dress up!) and purchase a ticket now from Marc Rowley on 880884 / 07976 183625 or see Sam Bell, Wendy Cochrane, Penny Arscot, Hayley Fisher or Michelle Bennett. The tickets are £15 each and include entry into the disco, a free buffet (part of the ticket cost), access to bar with local beer, intelligent games/competitions, a raffle and an incredible evening of fun. As per last year there will be a prize for the best fancy dress outfit.

BYGONE BOSWORTH

Images from the Historical Society's Archive Collection

We frequently get pleas for information relating to items with Husbands Bosworth connections that buyers have acquired through sale-rooms or on-line sales. A 1928 BSA motor cycle sold by Mathers Garage, a propelling pencil from Hillsome House and a violin that once belonged to village veterinarian, Baptist Kemp, spring to mind.

A while back we received these pictures of a bargeware teapot inscribed *Charles Dawes and Husbands Bosworth*. A quick look at the census returns for Bosworth for 1901 and 1911 showed that there were two Dawes families living here at that time, and one Charles Dawes.

This highly distinctive 'treacle-glazed' decorated pottery was produced in the latter quarter of the 19th century, in the small area around Measham on the Staffordshire/Leicestershire border. A shop in Measham sold the ware, which was particularly prized by the canal folk for its decorative properties to brighten up their boat cabins, and was often bought by them as presents or presentation pieces. Boatmen working up the Ashby Canal, most probably carrying coal, would commission a decorated pot, to be collected on their next run up the 'cut'.

'Our' Charles Dawes, in the 1911 census, was listed as 'labourer/ brick layer, 49', so quite how he came to have a posh teapot commissioned specifically for him remains a mystery. Certainly such a prized piece would have been expensive even at that time, and likely out of reach of a labourer, and perhaps a little bit ostentatious too... So presumably this piece was given as a 'thank you' or to mark a special event in Charles's life.

Incidentally, Charles Dawes lived in one of a row of three thatched cottages on Welford Road, opposite the school. The cottages were demolished in 1913 and the Methodist Chapel was built on the site.

TRADE DIRECTORY 2018

Armourgeddon Tank Paintballing Centre

Military vehicles, paintball & outdoor activities

Contact: Tracey 01858 880239

Croft Farm Bed & Breakfast

AA 4**** accommodation

Contact: Jane Smith 880679

Mike Price Heating Engineer

Oil-fired boiler servicing & repair

Contact: Mike Price 880902

Totally Trees Ltd.

Tree surgery and stump grinding

Contact: Jacqui Mitchell 01455 554182

Woodpecker Tree Surgery

All aspects of tree surgery undertaken

Contact: Chris Wright 880818

HEALTH AND WELLBEING

'Opening the Present'

A non-religious and non-sectarian, multi-media course donated by The Prem Rawat Foundation. Addressing the core values of dignity, peace, clarity, appreciation, understanding, hope, inner strength, self-awareness, choice and contentment.

This five-week course is run by volunteers of 'Peace In', a community, not-for-profit organisation.

The course starts on Wednesday, September 5th, 7.00pm - 8.30pm at the Reading Room, Berkeley Street, Sibbertoft.

Refreshments provided

For information and booking:

Email: pep2go@gmail.com or call 880393

In aid of the Air Ambulance Service



FLAT ROLLING • GRASS TOPPING • CHAIN HARROWING • FENCING
LAWN MOWING • HEDGE TRIMMING • GENERAL GARDEN MAINTENANCE

07761040218
ncdecorating.co.uk
5 Lammas Close - Husbands Bosworth - Leicestershire - LE17 6LL

ACTIVITY & INTEREST GROUPS

ACTIVITY GROUPS 2018

All Saints Parochial Church Council
 Contact: Diana Jones 880741

Baby-Sitting Circle
 Contact: Claire Scott 880295

Badminton Club
 Contact: Ralph Horton 880526

Beaver Scout Troop
 Contact: Norman Byrd 07973 532678

Bosworth Tots
 Contact: bosworthtots@hotmail.co.uk

Conservative Association
 Contact: Sue Fisher 880026

Craft Group
 Contact: Gail Wilmot 880413

Girlguiding Rainbows & Brownies
 Contact: Bonnie Kettell 882148

Historical Society
 Contact: Melvyn Forman 880281

1st Kilworth Scouts/Beaver unit
 Contact: Charles Lauder Jr. 01162 478430

Lutterworth African Drumming Group
 Contact: Ralph Horton 880526

Methodist Church Council
 Contact: Rev. A Murphy 462889

Millennium Woodland Trust
 Contact: Jackie Fletcher 880910

Royal British Legion
 Contact: Robert Maxwell 880361

South Kilworth Art Club
 Contact: Maggie Roberts 01858 682173

Tennis Club
 Contact: Jennifer Rogers 880401

HISTORICAL SOCIETY

The Historical Society's Winter Season commences on Wednesday, September 5th at 7.30pm in the Sports Pavilion. Brian Johnson from the Leicestershire Family History Society will be setting us off on the trail of family history research. Annual subscriptions (£12.00) will be taken at this meeting. Non-members are always welcome as visitors, when a door charge of £2.50 per meeting is requested. A full Programme of Meetings 2018-19 is available on request or on the village website: www.husbandsbosworth.info

VILLAGE HALL BOOKINGS
01858 880426 07766022901
husbandsbosworthvh@gmail.com
www.husbandsbosworthvillagehall.co.uk
SPORTS PAVILION ENQUIRIES
Audrey Marlow 880316

VILLAGE LUNCH

The next Village Lunch will be on Tuesday, September 25th when we will be meeting as usual at Kilworth Springs Golf Club at 12.30pm. The cost of the two-course lunch, to include tea/coffee and mints is only £10 per person. Please call Janice on 880668 to book or to cancel a booking.

MILLENNIUM WOOD

Volunteers please note that it has been necessary to change the date of the next Woodland work party to Saturday, September 8th, 9.30am to 12.30pm. Willing helpers are assured a warm welcome - we meet for one Saturday morning session a month at the Millennium Wood, off Mill Lane. Mostly the work involves scrub and weed clearance and pathway maintenance. Tools and refreshments are provided - all you need is boundless enthusiasm and stout footwear! Call Jackie on 880910 for more information.

TENNIS CLUB

Sadly there has been a spate of vandalism and theft at the Tennis Courts. The lock to the courts has been stolen and the electric cable to the lights has been pulled out of the ground, which is extremely dangerous. Stones were also strewn over the courts. We have organised repair work.

The club welcomes new playing members. We have two hard-surface, all-weather flood-lit courts on the village Playing Field. For more information please call Mike on 880455.

NEIGHBOURHOOD PLANNING UPDATE

The Advisory Committee and the Theme Groups have almost completed their tasks and by the end of September the first draft of the Husbands Bosworth Neighbourhood Plan will be written.

When this document is finalised it will be subject to a further six weeks of statutory consultation. The policies for the future of Husbands Bosworth will be shared with the community and everyone that was previously consulted will be given a copy of the draft Neighbourhood Plan and it will be submitted to Harborough District Council for scrutiny. The light at the end of a very long tunnel is just about coming into view!

WEATHER LOG

JULY 2018

Highest temp: 32.9°C July 5th

Lowest temp: 7.4°C July 25th

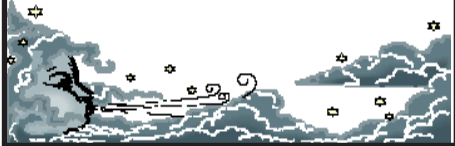
Air frosts: 0

Rainfall Total: 2.1mm (0.08")

Wettest day: 2.1 mm (0.08") July 21st

Rain days: 1

Total sunshine: 309 hours



CRAFT GROUP

The Craft Group meets on the second Wednesday of each month in the Committee Room of the Village Hall. This is a friendly and informal gathering where craft-minded people can pick up new ideas and practise their craft. Call Gail on 880413 for details.

COMPLETE CAR CARE

Accident repair specialist

Bodywork, dent, scratch and stone-chip repair

Servicing, alloy refurbishment, welding

MoT repair

Valeting, full body polish

Parking sensors, tyres & exhausts, etc. fitted

Call Ben on 01858 880404

bencompletecarcare@outlook.com

F&W Plumbing & Heating Services Ltd

22 Elmcroft Road, North Kilworth, LE176HX

Bespoke bathroom & kitchen design and installation

All types of wall and floor tiling

Hot and cold water systems

Gas-fired boiler installations and system upgrades

Unvented hot water systems

Gas Safe and Bepec registered

Contact Jason on 07866741261

Email: jayspanner@btinternet.com

www.fandwplumbingandheatingservices.co.uk

Over 30 years experience in designing and installing contemporary and traditional kitchens and bathrooms

Project manage personally with all associated trades for a co-ordinated high quality finish with minimum disruption

PARISH COUNCIL NEWS

Report of the Parish Council Meeting held on Tuesday, August 7th 2018

Councillors met informally at the cemetery prior to the meeting

Present: 3 Councillors

Apologies received from Cllr. Shelley & Cllr. Fisher

Minutes of the last meeting were approved and signed

Matters Arising

No response had been received about street cleaning. Clerk to enquire if there was a published schedule

Transport

□ Council noted the one year reprieve for the 58 Bus Service. Council agreed to consult with the other A4304 corridor villages and Welford to investigate options should the service be withdrawn next year.

Neighbourhood Plan

□ An update on progress and the projected timescale to completion, prepared by the NP Advisory Committee Clerk, was read. The Advisory Committee Chairman outlined the progress of the three Theme Groups. Council heard that the groups are now finalising their policy documents.

□ It was agreed that the Parish Council should undertake a Land Call on behalf of the NP Advisory Committee. Finance and funding for the Neighbourhood Plan were discussed.

Cemetery

□ Council noted that the contractors were not mowing into the margins. Clerk to consult the Schedule of Works and contact the contractor.

□ Clerk informed Council that the deeds to the cemetery site cannot be traced and it was agreed to authorise the Council's solicitor's to draw up new deeds under a legal Statement of Truth.

Playing Field/Play Area

□ Council noted that the soft surfacing was again shrinking away around the margins. It was agreed to arrange for repairs but that any major work would be held over until after the imminent RoSPA report.

□ Proposals for the future of the Play Area and equipment and the Skatepark were discussed at length.

Quotes for the re-surfacing of the car park were discussed. Further quotations were awaited.

Traffic Issues

□ Council noted concerns raised by residents regarding the poor re-surfacing work recently carried out in Highcroft and Wells Close. Clerk to contact Highways.

□ Council noted that issues relating to traffic calming measures on Welford Road, linked to the occupation of homes on Marsh Drive, had not been pursued by the HDC Planning Enforcement team. Clerk was asked to contact District Councillor Lesley Bowles and County Councillor Blake Pain regarding the matter.

S106 Funding

Council noted the lack of response to funding from community groups regarding the S106 developer contribution fund. It was agreed to promote the fund again and arrange a meeting with interested parties.

Any Other Business

□ The renewal of the Scout HQ lease was proving problematic, due to issues relating to trusteeship. Clerk to clarify the situation with Council's solicitors.

Broadband

□ Cllr. Hobson gave a report on the progress on the upgrading of the local high-speed broadband delivery.

□ Quarry Liaison: Cllr. Hobson gave a report on the activity at the Welford Road quarry. Further extensions were being sought that would extend the extraction period until June 2019. Landfill would be building-trade dependent, but would likely extend to at least 2024. Council was reminded that Landfill Tax grants were still available.

100 Year Commemoration of the end of The Great War

□ Cllr. Forman asked for Council's help in setting up a beacon lighting event and 'soup kitchen' in the Sports Pavilion for the evening of Sunday, November 11th.

□ A tree planting project has already been discussed by Council. Further notes on this would be brought to the next PC meeting.

□ Council discussed a request for ideas for setting up a book/CD exchange. It was noted that a book library/exchange had been set up in the Parish Office, although this was only open during office opening times. The practicalities of setting up in one of the parish-controlled bus shelters was discussed but concerns were raised about vandalism and lack of space.

□ Council formally noted the contribution that the out-going Clerk, Mrs. Fletcher, had made during her term in office and Clerk was asked to extend the thanks of present councillors.

Next meeting

The next meeting will be held in the Committee Room of Turville Memorial Hall on Tuesday, September 4th 2018 at 7.30pm.

SID REPORT

Readings from the Speed Indicator Device

Kilworth Road outbound

Period: 25.07.18 - 01.08.18

Vehicle movements: 14494 Av./day: 2074

Average speed: 32.08mph

Highest recorded speed: 65mph

Theddingworth Road inbound

Period: 01.08.18 - 08.08.18

Vehicle movements: 14880 Av./day: 2026

Average speed: 28.31mph

Highest recorded speed: 51mph

Theddingworth Road inbound

Period: 08.08.18 - 15.08.18

Vehicle movements: 13231 Av./day: 1890

Average speed: 30.69mph

Highest recorded speed: 60mph

Theddingworth Road outbound

Period: 15.08.18 - 22.08.18

Vehicle movements: 13121 Av./day: 1874

Average speed: 30.70mph

Highest recorded speed: 56mph

PARISH COUNCIL

Husbands Bosworth Parish Council:

Councillors

William Fletcher (*Chairman*)

Melvyn Forman (*Vice Chairman*)

Susan Fisher

Patricia Hobson

James Shelley

Parish Clerk

Sarah Mason

Parish Office

2a Mowsley Road LE17 6LR

Tel: 881109

clerk@husbandsbosworthpc.org.uk

Karting

Leicester Airport, Gattree Rd, Gt Stretton, Leicestershire. www.stretton2000.com

The UK's Premier Karting experience

850M floodlit racing circuitLicensed Bar & Function roomStag & Hen Parties

Corporate & Team Building ActivitiesChildrens Parties

60 Mph, 300cc Thunder KartsKart Club & Championship Races

Junior Kart's AvailableGift Vouchers Available

Arrive & Drive Sessions

Stretton Circuit 0116 259 2900

Open 7 days a week 10.00am - 9.00pm



North Kilworth Wharf Ltd
boat services & hire

Station Road, North Kilworth, Lutterworth,
Leicestershire LE17 6JB.
01858 881723, 07977909806
northkilworthwharf@tiscali.co.uk
www.northkilworthwharf.com

DAY BOAT HIRE
from £120

LOCAL COAL
DELIVERY from £9.90
for 25kg bag

CHURCH NEWS

All Saints Parish Church, Methodist Chapel & St. Mary's Roman Catholic Church

FROM THE RECTORY

Bishop Martyn's Big Conversation is coming to our Benefice on the weekend of September 21st to 23rd. There will be events held in each of the parishes during this time, which are open to all, although for some it will be necessary to book in advance.

In Husbands Bosworth there will be two events. The first is a visit to Husbands Bosworth C of E Primary School on Friday morning. Bishop Martyn will be here with a small team from the diocese, including some people who are in training to become vicars, and will be at the school from the time the children arrive, with coffee and donuts for any who want to stop to say 'hello' at the school gate. They will spend time with the children and staff during the morning in school, with the Bishop taking an assembly before moving on to Arnesby at lunchtime to visit the school there.

Then on Sunday afternoon (23rd) from 4.00pm, Bishop Martyn will be with the team at All Saints Church, Husbands Bosworth for afternoon tea, which all are welcome to come along to. Do come along to say hello, have some refreshments and a chat and be part of welcoming Bishop Martyn to our village. At 6.00pm, there will be a service of Holy Communion to which all are welcome and we particularly want to celebrate with Christians of all denominations the life and calling we share in following Jesus.

So, whatever denomination of Christianity you practice, or if you are someone who believes but are not part of a worshipping community this invitation is for you to come and join us on this special occasion. Hope to see you over the weekend...

Liz

The programme for the whole of the weekend is as follows:

Friday 21st

- 8.30am - 11.30am Visit to Husbands Bosworth C of E Primary School
- 12.00pm - 3.00pm Visit to Arnesby C of E Primary School
- 3.15pm - 4.30pm Pop in for a cuppa at Arnesby Village Hall
- 7.00pm Harvest Supper at Bruntingthorpe (booking required)

Saturday 22nd

- 9.00am Breakfast with the Bishop, The Chandlers Inn, Shearsby (booking required)
- 12.30pm Farm Walk, picnic & Sporting Challenge, The Oaks Farm, Theddingworth
- 5.00pm Service to remember those we have loved and lost at St. Nicholas Church Mowsley followed by tea in the Village Hall

Sunday 23rd

- 10.30am Be our guest at a service at St Peter's Church Arnesby followed by a soup lunch in the Village Hall
- 4.00pm Afternoon Tea at All Saints Church Husbands Bosworth
- 6.00pm An ecumenical service of Holy Communion at All Saints Church, Husbands Bosworth

REMEMBERING

Over the weekend of Remembrance we are inviting community groups to help us decorate All Saints church with poppies or other reminders of the fight for peace, as we commemorate the 100 year anniversary of the end of the Great War.

HELPERS?

Are there any more green-fingered volunteers who would like to help us keep the garden areas around All Saints Church in good order? Please call Di on 880741.

ALL SAINTS FLOWER ROTA

September:

Jean Hutchings

Call Heather O'Connor on 880165 if you would like to join the Flower Rota

✠CHURCH SERVICES ✠

Hexagon Benefice

- 2 9.00am Joint Communion at Mowsley
9.30am Morning Prayer HB
11.00am Communion Thed.
11.00am Family Service B'thorpe
6.00pm Communion Arnesby
- 9 9.30am Communion Shearsby
9.30am Family Service Arnesby
11.00am Communion HB
6.00pm Evensong Mowsley
- 16 10.30am Benefice Service Shearsby
3.00pm Harvest Service Knaptoft
- 23 6.00pm Benefice Communion HB
- 30 10.30am Benefice Communion HB

Short Communion every Wed. 9.15am HB

Churchwarden:

Diana Jones 880741

Rector:

Liz Bickley 880351

Methodist Church

- 2 Rev Andrew Murphy (Com.)
- 9 10.15am MH
- 16 Mr Stephen Pointer
- 23 4.30pm HB
- 30 4.30pm HB

Services every Sunday 4.30pm.

All Welcome

Contacts:

Rev. Andrew Murphy 462889

Senior Church Steward:

Mr. A Lloyd Jones 880343

St Mary's Roman Catholic Church

Services every Sunday 8.30am.

Contact:

Robert Constable-Maxwell 880361

Father Owen O'Neil 462359



MILITARY VEHICLE DRIVING AND TANK BATTLES AT
ARMOURGEDDON
Military Museum
One of the Largest Collections of
WWII Vehicles and Militaria in the Midlands.

Our under cover collection includes post war vehicles, Main Battle Tanks, as well as an excellent selection of other American, German and British vehicles. With interactive displays and lots of things to see. Visit on a game day (Saturday, Sunday or selected Wednesday—April to October) and you will get to see some of our vehicles driving around.

01858 880 239
Chat to us Online
www.armourgeddon.co.uk

Office hours Monday to Friday 0900hrs—1700hrs



'JJ's Kiddycare'

- *OUTSTANDING* Ofsted grading
- * FREE Pre-school sessions for 2, 3 & 4 year olds
- * Full Day Care 0-5yrs

Situated on a farm site between South Kilworth and Welford

- * Breakfast and After School clubs. (4-14years)
- * Holiday Clubs during all Northants & Leics school breaks

Tel no. 01858 575642
www.jjs-kiddycare.co.uk



DIARY DATES for SEPTEMBER

Tuesday 4 th	Parish Council meeting, 7.30pm Committee Room, Village Hall
Saturday 8 th	Millennium Wood work party (<i>Note: date changed</i>), 9.30am - 12.30pm
Tuesday 11 th	Bosworth Art Group, 10.00am - 1.00pm Pavilion
Friday 14 th	Causeway Coffee morning, 10.00am - 11.30am Pavilion
Sunday 16 th	Knaptoft Harvest Open-Air Service, 3.00pm St. Nicholas Church
Friday 21 st - Sun. 23 rd	Bishop Martyn's Visit
Friday 21 st	Mobile library
Saturday 22 nd	'70s' Fancy Dress Disco, 8.00pm Village Hall
Tuesday 25 th	Village Lunch, 12.30pm Kilworth Springs Golf Club

FORTHCOMING EVENTS

Tuesday October 2 nd	Parish Council meeting
Sunday October 7 th	Conker Championships & Welly Wanging
Fri. October 26 th	Pudding Evening
Saturday, November 10 th	All Saints Community Choir Concert
Sat. January 12 th 2019	<i>Govannen</i> return!

LOCAL PLANNING NEWS

The following applications have been submitted to Harborough District Council:

- 18/01288/FUL Erection of a two storey side extension, Dene Lodge Theddingworth Road
- 18/01300/FUL Erection of a two storey rear extension, single storey rear extension and porch extension 25 Bell Lane
- 18/01301/TCA Works to tree 4 Kilworth Road
- 18/01313/OUT Outline application for the erection of two dwellings (All matters reserved) 9 Broad Lane
- 18/01320/FUL Erection of 30 dwellings, including the formation of a new vehicular access, car parking, landscaping, drainage & associated works. Land adj. Knights Close Welford Road
- 18/01367/TCA Works to trees 10 Bell Lane

Recently determined application:

- 18/01060/FUL Retrospective application for replacement milking parlour, livestock holding building and feed store, Woodside Farm, Theddingworth Road (Refused)

Current applications may be inspected during normal working hours at the Council Offices, The Symington Building, Adam & Eve Street, Market Harborough. Comments concerning planning applications should be addressed to the Development Control Manager.

Planning applications and other aspects of local government can now be viewed on-line at www.harboroughonline.co.uk

MOBILE LIBRARY

NOTE CHANGES TO SERVICE

The Mobile Library will now be calling on the third Friday of each month.

STOPS & TIMES

School, Welford Road:	10.35am - 11.35am
Berridges Lane:	11.40am - 12.20pm
Butt Lane	12.25pm - 1.00pm

Now lending *Talking Books* on CD & tape

***** You can now renew on-line or by phone *****

BUGLE.....FREE ADS.

Phone Sylvia on 880902 or email: sylvia1_p@hotmail.co.uk
OFFERS

Chinon Sonore Super 8 cine projector and screen
Offers. Please call 880824 for more details.

FOR SALE

Banqueting chairs, 63 reasonable condition £1 each
9 meeting room chairs, grey +2 with arms (Good condition) offers.
Also small nursery chairs for children, 15 blue & 8 red offers
In aid of Church Funds Contact: Di Jones 880741



P.C. BUILDING SERVICES LTD

Established
27 years



Complete building service
Specialist in new build
Quality renovations
& Extensions

Tel/Fax 01858 881202

Email: pcbuildserv@btinternet.com

Walton Grange, Bosworth Road
Walton, Lutterworth, Leics LE17 5RW

STEFAN the HANDYMAN

- Quality woodwork
- Painting
- Tiling
- DIY
- Repairs
- Home maintenance, and lots more...!



Not sure it's a job for Stefan? Just pick up the phone and ask!

01858 881775

StefantheHandyman@outlook.com

Facebook: [@StefantheHandyman](https://www.facebook.com/StefantheHandyman)