

REMEMBERING THEM...

This month, as part of the nation's commemoration of 100 years since the guns fell silent over the trenches, we will be remembering those men of our parish who gave their lives in The Great War.

Over the weekend of November 10th and 11th All Saints Church will be hosting a special event honouring the 14 men of Bosworth who didn't return. The event will also acknowledge, in displays, those who fought and did return and also the support of those on the Home Front, such as the nurses, who fought their own battles.

On Saturday evening there will be a concert of songs by the Wigston-based Harmonics Community Choir - and a chance of a bit of a sing-along to well known songs from the time of the First World War.

On Sunday morning the local branch of the Royal British Legion will lead the traditional parade to the village War Memorial where the names of those who have given their lives in service of the country will be remembered, followed by the Last Post at 11.00am. A service of Remembrance will follow in church.

In the evening, the focus will move to the Playing Field where, at 7.00pm, as part of the nation's *Beacons of Light*, we will be lighting our village beacon, followed by a free 'Soup Kitchen' supper in the Pavilion.

Please come along to these events and show your support.



Sons of Bosworth. Five sons of W H Stanyon answered the call... and returned.

TROUBLESOME TOWPATH

It looks as if the proposal to adopt 'our' stretch of the canal towpath from Bridge 46 to the tunnel entrance is dead in the water... Canal and River Trust (CRT) now tell us that following consultation with their local engineering team the work appears to be far more complex than they had originally envisaged. The upshot is that, as far as they are concerned, the project would need considerable financial and technical input from themselves; input they can't at present justify.

The project has been proposed over many years and we are told, presently sits in their 2020-2021 'to do' tray. However, they lamely acknowledge that unless budgets increase it will likely slip back again, as they view it as a relatively complex, expensive and time consuming project.

Apparently tests have been carried out to see if wooden posts (for nicospan soft-edging) or steel piles could be driven. The tests confirmed that a rocky shelf extends out from the bank-side and, as such the only real option would be rock-filled steel cages (gabions). As the works would require specific plant and trained operators the work would need to be led by CRT's Direct Services team.

It would be difficult to carry out the voluntary maintenance work to the towpath that we had envisaged until CRT have carried out the primary work to stabilise the bank and establish a good foundation. So, it seems as if the project will have to wait. In the meantime visitors and walkers will have to endure some of the worst towpath in the whole of the inland waterways system.

WHARF WOES

Further down the canal, at Welford Wharf, concerns have been raised about the clearance of the site to the rear of the redundant boat-horse stable block. The stables and the small paddock have recently been sold by CRT as they seek to cash in some of their realisable assets. The site was bought at auction in September by a private buyer who is said to be considering renovating the stables and creating two craft units.

However, concerns have been raised that the work to clear the site, close to the Grade II listed Wharf warehouse, should not have gone ahead without an ecological assessment and planning permission to carry out work to trees.

On a happier note... the Bishop of Leicester and the school's artwork. See p. 4



BUGLE POSTBAG

From Marc Rowley, Cherry Tree Close

I would like to give a massive thank you to everyone who attended the recent 70s fancy dress disco, in aid of Action for Children, at our wonderful Village Hall. The attention to detail in relation to fancy dress outfits was amazing (even a couple of twins were seen) and as ever the dancing surpassed all expectations! Special thanks also to everyone who couldn't attend but still donated.

The evening was a fantastic success with us raising just under £800 and the support given by local businesses, as well as a dedicated team of volunteers, was amazing. Big thanks goes to The Catering Corner, Langton Brewery, Fishers of Wigston, Springfields, Ascough Bistro and Downtown disco.

The generous volunteers who gave up their spare time to make it all happen were Penny Arscott, Kerry Womack, Michelle Bennett, Paul Griffin, Sam Bell, Wendy Cochrane, Hayley and Matt Fisher and Gayle Rowley.

Save the date for our next and biggest party yet - '90s fancy-dress party with a little bling-bling... Saturday 8th June 2019 - it's gonna be BIG!

From the Millennium Wood Volunteers

Could dog users of the millennium wood please use the poop bins for their doggy bags rather than the litter bins? It is only a few yards extra across the car park to the bin which is emptied by a waste disposal team. The litter bins are emptied by millennium wood volunteers and it is not pleasant to have to shift (as per this last month) around 20 bags of poop to the correct bin. Your help in this matter would be much appreciated.

CRIME FILE

Northamptonshire Police have noted a spate of shed break-ins in the Naseby area in recent weeks and are advising residents of nearby villages to review their security arrangements. Check perimeters for vulnerable access points, and ensure that gates and sheds are secured. If possible install security lighting, but only if when activated you can be alerted to the activation. Don't provide light for offenders to 'work' by!

LOCAL CRIME

- Arson and criminal damage, Church Lane, Mowsley Court & Bell Lane, HB
- Theft from, and damage to, a vehicle, The Gliding Centre, Sibbertoft Road
- Damage to parked vehicle, Hawthorn Road, North Kilworth
- Theft from business premises, Station Road, Husbands Bosworth
- Domestic burglary, Salford Close, Welford
- Mugging and robbery, High Street, Welford
- Damage to trade vehicle, land off Newlands Road, Welford
- Theft from parked vehicle, Main Street, Theddingworth
- Theft and non-payment, Petrol Station, Walcote

There have been a number of reports of criminal activity in the area of the village allotments on Welford Road. In all cases locks have been damaged and sheds entered but nothing seems to have been taken. Allotment holders are asked report any suspicious activity to the Parish Clerk and notify the police if anything has been stolen.

THE BUGLE TEAM

Editor:

Melvyn Forman
10 Church Lane Tel: 880281
Email: bosworth_bugle@talk21.com
Treasurer & Advertising:

Ralph Horton
18 Highcroft Tel: 880526
Contacts:

Mike & Sylvia Price
3 Highcroft Tel: 880902
Jo Horton

18 Highcroft. Tel: 880526
Frances Smith
10 Butt Lane Tel: 880225

Penny Mattock
9 Fernie Court Tel: 881140
Heather O'Connor

16 Fernie Court Tel: 880165
Postal Subscription & distribution:
Melvyn Forman Tel: 880281
Email: bosworth_bugle@talk21.com

www.husbandsbosworth.info

**COPY DEADLINE
15th OF THE MONTH
PRECEDING PUBLICATION**

POLICE FILE

IF YOU HAVE INFORMATION ON ANY CRIMINAL ACTIVITY CALL MARKET HARBOROUGH POLICE on 101

Neighbourhood Watch Co-ordinator

Stephen Bilbie
stephenbilbie@btinternet.com
NW Community Scheme No. 2123
Eastern Counties Policing Team
PC 1261 Andy Cooper
PCSO 6569 Peter Willson
PCSO 6008 Laura Bolton
Voicemail Service 0116 2485675

CRIMESTOPPERS

FREephone 0800 555111

ACTION FRAUD

www.actionfraud.police.uk
0300 123 2040

TW
LANDSCAPE &
PROPERTY SERVICES

PLEASE CONTACT THOMAS
FOR A NO OBLIGATION FREE QUOTE:
07525064220
twlandpservices@outlook.com

20% AUTUMN / WINTER DISCOUNT
Offering a wide range of Hard & Soft Landscaping:

- Fencing & Repairs
- Garden Maintaining & Clearance
- Tree & Hedge Pruning
- Turfing
- Driveway Installation & Maintenance
- Patio Installation & Maintenance
- Decking
- Timber Cabin, Shed, Stable & Garage Builds
- Ponds & Water Features
- Concrete Bases
- Household Repairs & Maintenance

STEFAN the HANDYMAN

- Quality woodwork
- Painting
- Tiling
- DIY
- Repairs
- Home maintenance, and lots more...!

Not sure it's a job for Stefan? Just pick up the phone and ask!

01858 881775

StefantheHandyman@outlook.com
Facebook: @StefantheHandyman



BOSWORTH IN FOCUS

A TASTE OF BOSWORTH

Malteser Brownies

My first recipe for the Bugle was Malteser Cake and I have now discovered a Brownie, courtesy of a friend's daughter, which is absolutely delicious! With Bonfire Night upon us this month these are ideal for a treat to share with friends.

Ingredients

150g unsalted butter
170g 70% dark chocolate (broken up)
225g golden caster sugar
2 large eggs
150g self raising flour
150g Maltesers

Method

Preheat oven to 180°C. Lightly grease and line a 23cm x 23cm square tin.
Gently melt butter and chocolate in a glass bowl set over a pan of simmering water. Once melted, remove from the heat and leave to cool slightly. In a separate bowl whisk together sugar and eggs until frothy. Pour in butter and chocolate mixture and flour and fold together until you have a thick mixture. Fold in the Maltesers and spoon mixture into the tin, smoothing out with a palette knife. Bake in the centre of the oven for approx 20 mins. The top should no longer be shiny and edges starting to crack. Test the brownies with a toothpick or skewer - it should come out almost clean. Cool completely before cutting into squares.

Jackie Kerr

WEATHER LOG

SEPTEMBER 2018

Highest temp: 28°C on September 2nd

Lowest temp: 2.6°C on September 25th

Air frosts: 0

Rainfall Total: 56.1mm (2.21")

Wettest day: 16.2mm on September 20th

Rain days: 12

Total sunshine: 187.5 hours

Brian Smith

WILD ABOUT BOSWORTH

Grey Squirrel - *Sciurus Carolinensis*

'*Sciurus*' comes from the Greek words 'skia' and 'oura' which translate as 'shadow' and 'tail'. The name derives from the squirrels' alleged habit of sitting in the shade of their tails. 'Carolinensis' refers to their origin; the Carolinas in America. Perhaps a better name would be 'Marmitus Carolinensis', as they are creatures which enjoy a love-hate following...

Lovers of squirrels wonder at their acrobatic skills and admire their amazing problem-solving abilities. Indeed, to avoid having their winter food stores stolen, they're clever enough to pretend to hide food when they're being watched. And we shouldn't forget how cute they look...

Detractors see them as vermin who steal eggs and chicks. They dislike how they kill trees by stripping them of bark and detest them for displacing our much-loved red squirrels. Like European colonists to the New World, grey squirrels carry diseases that devastate the local population. In particular, they spread an infection called 'squirrel pox,' which is habitually fatal to reds.

Their official status as vermin means there's legislation regarding their treatment. For instance, it's legal to shoot and trap them. Indeed, should you accidentally trap one, you are legally obliged to dispose of the unfortunate creature humanely.

One method of population control involves destroying their nests (dreys). These bundles of twigs, leaves and grass are constructed in the topmost branches. They're built by males and females prior to the spring breeding season. Once the female becomes pregnant, the male is evicted from the family home. He'll be readmitted later in the year for a second mating and, perhaps compassionately, during periods of extreme cold.

Should you be motivated to take revenge on these creatures for some past slight, it's possible to purchase squirrel meat, though I'd suggest you ignore the adage; "Revenge is a dish, best served cold."

Mike Chanter

CONKED OUT

A very big thank you to everyone who helped us in so many different ways towards another very successful Conker and Welly Wanging event.

Thank you, also, to everyone who attended. It was so good to see so many friendly, happy and smiling people who all seemed to be enjoying themselves.

Thanks to your support we managed to raise £1600 which has enabled us to send donations of £600 to each of Age UK and The Rainbows Children's Hospice as well as supporting a number of worthwhile causes within the village.

The donations would have been greater had it not been for the despicable actions of an opportunist who stole a handbag containing the takings from one stall, putting a real dampener on the end of such a fun day. On the day and after the event we have really seen both sides of human nature in operation. Thank you once again.

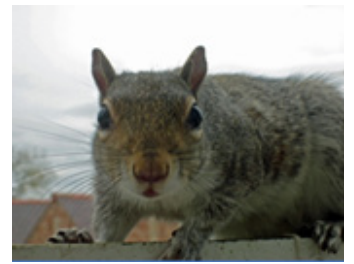
Ralph Horton

SULBY OPEN GARDENS

Sulby Gardens opened on five occasions during 2018 and raised over £2000 for the worthy charities supported by the National Garden Scheme. A further £1000 from sales of plants, vegetables and fruit, as well as part of our tearoom takings will be sent to other charities which we regularly support. Thank you to everyone who supported us this year.

May I urge those who did not make it this year, to come and have a look during 2019 when we will be opening as usual in April, June, August and October. Keep an eye on your trusty Bosworth Bugle for details as those dates approach!

Alison Lowe



WEATHER LOG
SEPTEMBER 2018
Highest temp: 28°C on September 2nd
Lowest temp: 2.6°C on September 25th
Air frosts: 0
Rainfall Total: 56.1mm (2.21")
Wettest day: 16.2mm on September 20th
Rain days: 12
Total sunshine: 187.5 hours
Brian Smith

Karting
Leicester Airport, Gartree Rd, Gt Stretton, Leicester. www.stretton2000.com
The UK's Premier Karting experience
850M floodlit racing circuit Licensed Bar & Function room Stag & Hen Parties
Corporate & Team Building Activities Childrens Parties
60 Mph, 300cc Thunder Karts Kart Club & Championship Races
Junior Kart's Available Gift Vouchers Available
Arrive & Drive Sessions
Stretton Circuit 0116 259 2900
Open 7 days a week 10.00am - 9.00pm

**S Clarke Building**
General Building
Scott Clarke Building
07725 552566
01858 880863
sclarkebuilding@outlook.com
Alterations
Extensions
Plastering
Hard-landscaping
Block-paving
General Building Works
For free quote or design ideas call Scott

SCHOOL REPORT

HUSBANDS BOSWORTH C. of E. PRIMARY SCHOOL Head Teacher Alan Eathorne

This month we held our first art exhibition. It was great to see so much high quality art from children across the school. Our theme focused on nature and the beauty that is all around us. The Art Exhibition was a perfect example of our drive to provide the children with purposeful opportunities to learn and produce amazing work. The children did brilliantly to make their artwork look stunning. Huge credit goes to Miss Tedds and Mrs Bell for organising such a great event.

This event also coincided with Bishop Martyn and his team visiting the school. They were all blown away with the warm welcome they received and by the children's art. The children had the opportunity to think about friendship and they got a chance to ask Bishop Martyn questions, which everyone enjoyed. Amelia said 'He talked to us and it was really interesting meeting him. I didn't know that he works for all the churches in Leicestershire.' Finally, here are three pieces by children from Class 2 writing about the Great Fire of London:

□ "I woke up and I got out of bed and smelt the air and I said 'Where is that smell?'" Keira

□ "When I woke up it was very dark but I could smell burning so woke my family up and we went out the window. In the street people were shouting 'Help!'" Henry R

□ "I woke up and I went to the window. The bakery was on fire. I shouted 'help help fire fire'" Francesca

FOBS NEWS

Diary Date:

Saturday, December 1st

FOBS Casino Night. When the chips are down FOBS Casino Night is where you need to be!

St. Andrew's Primary School

Will your child be starting
school in
September 2019?

Open Morning
Tuesday 20th November 2018

9:30- 10:30

Meet the staff and have a tour of the school. We are here to answer all your questions about life at school.

St Andrew's Primary
Dag Lane
North Kilworth
LE17 6HD
01858 880430



F&W Plumbing & Heating Services Ltd

22 Elmcroft Road, North Kilworth, LE176HX

Bespoke bathroom & kitchen design and installation
All types of wall and floor tiling
Hot and cold water systems
Gas-fired boiler installations and system upgrades
Unvented hot water systems
Gas Safe and Bepec registered

Contact Jason on 07866741261

Email: jayspanner@btinternet.com

www.fandwplumbingandheatingservices.co.uk

Over 30 years experience in designing and installing contemporary and traditional kitchens and bathrooms

Project manage personally with all associated trades for a co-ordinated high quality finish with minimum disruption

TRADE DIRECTORY 2018

Armoureddon Tank Paintballing Centre
Military vehicles, paintball & outdoor activities
Contact: Tracey 01858 880239

Croft Farm Bed & Breakfast
AA 4*** accommodation
Contact: Jane Smith 880679

Mike Price Heating Engineer
Oil-fired boiler servicing & repair
Contact: Mike Price 880902

Totally Trees Ltd.
Tree surgery and stump grinding
Contact: Jacqui Mitchell 01455 554182

Woodpecker Tree Surgery
All aspects of tree surgery undertaken
Contact: Chris Wright 880818

VILLAGE HALL BOOKINGS

01858 880426 07766022901

husbandsbosworthvh@gmail.com

www.husbandsbosworthvillagehall.co.uk

SPORTS PAVILION ENQUIRIES

Audrey Marlow 880316

BYGONE BOSWORTH

Images from the Historical Society's Archive Collection

Last month we featured a picture from the Archive Collection of a relaxed bunch of WWII evacuees outside the Village Hall. They were probably reasonably happy because they didn't fully understand the situation or the dangers that had brought them out of London. This month's picture shows a group of villagers outside the school who would certainly have known the dangers and situation that brought them to this picture. They are the 'thankful' ones - those men of the village who returned from the horrors of the Great War trenches. As we will be remembering in numerous events this month, 14 of their fellow villagers didn't return...

Mustering over 60 able-bodied men from a small rural community must have put a strain on the local workforce. The village proved duly thankful for their return and a Welcome Home committee of village stalwarts was established to raise funds to provide for their immediate needs, and the needs of their families, on their return.



P.C. BUILDING SERVICES LTD

Established 27 years



Complete building service
Specialist in new build
Quality renovations
& Extensions

Tel/Fax 01858 881202

Email: pcbuildserv@btinternet.com

Walton Grange, Bosworth Road
Walton, Lutterworth, Leics LE17 5RW

ACTIVITY & INTEREST GROUPS

- ACTIVITY GROUPS 2018**
- All Saints Parochial Church Council**
Contact: Diana Jones 880741
- Baby-Sitting Circle**
Contact: Claire Scott 880295
- Badminton Club**
Contact: Ralph Horton 880526
- Beaver Scout Troop**
Contact: Norman Byrd 07973 532678
- Bosworth Tots**
Contact: bosworthtots@hotmail.co.uk
- Conservative Association**
Contact: Sue Fisher 880026
- Craft Group**
Contact: Gail Wilmot 880413
- Girlguiding Rainbows & Brownies**
Contact: Bonnie Kettell 882148
- Historical Society**
Contact: Melvyn Forman 880281
- 1st Kilworth Scouts/Beaver unit**
Contact: Charles Lauder Jr. 01162 478430
- Lutterworth African Drumming Group**
Contact: Ralph Horton 880526
- Methodist Church Council**
Contact: Rev. A Murphy 462889
- Millennium Woodland Trust**
Contact: Jackie Fletcher 880910
- Royal British Legion**
Contact: Robert Maxwell 880361
- South Kilworth Art Club**
Contact: Maggie Roberts 01858 682173
- Tennis Club**
Contact: Jennifer Rogers 880401
- Workers Education Association**
Contact: Sally Sherratt 571064

HISTORICAL SOCIETY

The next meeting of the Historical Society will be on Wednesday, November 7th when social historian, Katie Bridger, will be looking at the life of Sir William Turville. Turville, a Leicestershire landowner, Justice of the Peace and an avid litigant was a flamboyant character in 16th century England. A veritable thorn in the side of almost everyone he had dealings with, he often found himself on the wrong side of the law, upsetting everyone from local peasants to the Crown.

The meeting is at 7.30pm at the Sports Pavilion, Kilworth Road. New members are assured a warm and friendly welcome. Annual subscription is only £12. Call Melvyn on 880281 for more information.

CRAFT GROUP

The Craft Group will be hosting their annual Craft Fair on **Sunday, November 18th, 11.00am to 3.00pm** in the Village Hall. We have over 12 tables of locally-crafted items for sale, a Tombola and a raffle. Excellent homemade refreshments. Free admission.

If anyone is interested in having a table then it's £10 per table. Contact Gail on 880413. All profits this year will go to The Lifeboats and Childline.

HAVE YOUR SAY

There are vacancies for patients of the Market Harborough Medical Centre and Bosworth Surgery to join our Patient Participation Group. Members of this friendly group of volunteers, which meets regularly throughout the year to take part in a range of activities which support the work of the Partnership, whilst also fulfilling the role of a 'critical friend'. Bosworth Surgery is under-represented on this Group at the moment. If you want to find out more about the PPG and/or register an interest in becoming a member, please get in touch with either Brian Smith on 880225 or Barbara Johnson on 446294.

VILLAGE LUNCH

The next Village Lunch will be on Thursday, November 29th, 12.30pm Kilworth Springs Golf Club.

Call Janice on 880668 to book a place or for more information.

MILLENNIUM WOOD

The next Woodland work party will be on Saturday, November 17th. Come along for a bit of a work-out and help us to maintain the woodland for the village. Meet at 9.30am, coffee at 11.00am.

Call Jackie on 880910 for details.

WELFORD WATERCOLOURISTS

Welford Watercolourists Annual Art Exhibition and Sale of Paintings and Cards will be on Saturday December 1st and Sunday December 2nd from 10.00am to 4.00pm in Welford Village Hall, West Street NN6 6HU.

Free admission and excellent homemade refreshments. All profits this year will go to The Air Ambulance.

Further details from Karen Perrin on 01604505851

N. & S. A. Fisher Limited
Spa Lane, Wigston
Leicestershire LE18 3QD.
0116 288 1101

Tony Fisher,
Dealer Principal
tonyfisher.sales@fisherswigston.co.uk



All New Ford Focus...
A good dilemma to have

Friends of Bosworth School Presents

CASINO NIGHT

Saturday 1st December
7.30pm - late
Husbands Bosworth Village Hall

"An evening of fun, glitz and glamour"

Dress Code: Black Tie.
Licensed Bar, Music & Raffle.

TICKETS £20 Include Casino Chips, Arrival Drink & Canapés

Tickets available from Springfields Supermarket or Abby Ascough (email absc Clarke@aol.com)

COMPLETE CAR CARE

Accident repair specialist
Bodywork, dent, scratch and stone-chip repair
Servicing, alloy refurbishment, welding
MoT repair
Valeting, full body polish
Parking sensors, tyres & exhausts, etc. fitted
Call Ben on 01858 880404
bencompletotecarcare@outlook.com

MIKE PRICE HEATING

Oil-fired boiler & heating systems
Servicing & Repairs

Ring 0771 4245290 mobile
01858 880902 home

Your local technician - on your doorstep



PARISH COUNCIL NEWS

Report of the Parish Council Meeting held on Tuesday, October 2nd 2018.

Present: Full council and 2 members of the public

Visitors' Questions

- Concerns were raised about the overflowing drains and garden waste/debris deposited recently in Dag Lane. Clerk was asked to contact Anglian Water regarding the drains and write to all residents whose properties back onto Dag Lane concerning the garden waste.
- Conflicting information concerning planning application responses was noted. Clerk agreed to clarify the matter with HDC and publicise this in the *Bugle*.
- The poor road surfacing and a new pothole in Highcroft was reported.
- A representative of Bowbridge Homes, the developer of the proposed 30 home western site off Welford Road addressed the meeting. He noted Council's concerns regarding public access from the development to the Playing Field, which Council felt could constrain future use of the field, and agreed to amend the proposals.

FORMAL BUSINESS

Neighbourhood Plan

- Council received an update on the progress of the Plan. All the Theme Groups have now submitted their proposals and a draft Plan is being written by the consultants, YourLocale.
- Council agreed to accept the Community Actions section of the NP once the Plan was ratified.

Playing Field

- Council discussed improvements and on-going maintenance considerations for the Skate Park. It was agreed to seek, through the school and a flyer, any ideas the village youngsters might suggest for the future of the facility. A quotation for safety-related repairs was discussed and approved.
- Council noted concerns about the overgrowth on the Playing Field/Play Area roadside hedge across the footway and Clerk agreed to contact the hedging contractor.

Tennis Club

- Concerns about the future administration of the Club were discussed. It was agreed to invite the Club committee to discuss their concerns fully at the next PC meeting.

Cemetery

- Council discussed safe-guarding measures and digitalisation of the cemetery burial records. The production of a simple digital copy was approved pending further information.

Staffing Matters

- Council agreed to extend the contract of the Neighbourhood Plan Clerk subject to a satisfactory review.

Procedures

- A review of Council Standing Orders is being undertaken and a time limit for Ordinary Meetings is proposed.

The Great War 100 Year Anniversary

- The commemorative tree planting project to provide shade over the Play Area would be restricted to possibly 5 trees; one for each year of the conflict.
- 1st Kilworth Scouts and the Royal British Legion local branch had both added their support for the National Beacon Lighting event on the Playing Field on Sunday, November 11th.

50th Anniversary of the reopening of the Welford Arm of the G.U. Canal

- Proposals for carrying out restoration and conservation work at Welford Wharf, which has been put forward by a group of Welford villagers, was discussed. As the area was within Husbands Bosworth Parish the group was seeking permission to carry out the work as a sub-committee of HB Parish Council in order to be covered for insurance and health and safety matters. Mr. Forman agreed to liaise with the group on behalf of Council.

Next meeting: Tuesday, November 6th 2018, 7.30pm, Committee Room, Village Hall

[Full Minutes can be viewed and downloaded at: www.husbandsbosworthpc.org.uk]

SID REPORT

Readings from the Speed Indicator Device

High Street westbound

Period: 26.09.18 - 03.10.18

Vehicle movements: 13926 Av./day:1989

Average speed: 26.80mph

Highest recorded speed: 50mph

High Street eastbound

Period: 03.10.18 - 10.10.18

Vehicle movements: 16214 Av./day: 2316

Average speed: 25.77mph

Highest recorded speed: 66mph

High Street eastbound

Period: 10.10.18 - 17.10.18

Vehicle movements: 16027 Av./day: 2291

Average speed: 25.87mph

Highest recorded speed: 78mph

Welford Road outbound

Period: 17.10.18 - 24.10.18

Vehicle movements: 9031 Av./day: 1290

Average speed: 31.41mph

Highest recorded speed: 68mph

PLANNING OBJECTIONS

New procedures have been introduced by Harborough District Council for objecting to planning applications. Although comments made on the District Council website will still be used in making decisions, there is no longer a trigger point which would automatically bring an application before a full planning committee. Instead, applications will only be brought before a planning committee if:

- The application is for a plan which would depart from the adopted development plan
- The application is for 25 or more dwellings, or over 10,000m² of commercial floor space
- The application is 'called in' by the Ward/District Councillor

This means that if parishioners would like an application to be assessed by a full planning committee, they must contact their District Councillor and request that the Councillor 'call' the application to Planning Committee. It is important to contact your District Councillor to discuss this at the earliest opportunity as their request can only be considered within 28 days of publication of the weekly list.



WOODPECKER

TREE SURGERY

All aspects of tree-work undertaken from dismantling large roadside trees to pruning and reshaping small garden trees.

We also offer a stump grinding service.

Professionally qualified and insured.

For free quotation and advice call

Chris on: 01858 434591

www.woodpeckertreesurgery.co.uk

CHURCH NEWS

All Saints Parish Church, Methodist Chapel & St. Mary's Roman Catholic Church

FROM THE RECTORY

This month we shall be commemorating 100 years since the end of World War 1. It will turn out to be a busy weekend with the poppy display in church and concert of songs of the era in church in the evening of Saturday 10th. We will have the usual parade and service on Sunday morning and the lighting of the beacon in the evening, part of 'Battles Over - the Nation's Tribute'. This marks 100 years of remembering the end of the war and all those who served and particularly those who gave their lives in service of King and country. It would be wonderful if it could have been remembering 100 years of peace since that time, but we all know, it did not turn out to be the war to end all wars as had been hoped.

What did the end of the war mean to those caught up in it 100 years ago? For the Germans it meant complying with a great many requirements placed on them by the armistice - withdrawal of troops, release of prisoners of war, release of captured ships, return of equipment, handing over submarines, allowing the Allies access to various ports and seaways and the abandonment of previous treaties. The end of the war meant much had to be undone.

For the Allied troops, while the hostilities had ceased, the peace had still to be secured, so it took some time for many of them to return home to loved ones and families and resumption of civilian life. Some were deployed to supervise the retreat of enemy troops, or to help establish peace, others were set on to dismantle camps in the many places across Europe where they had been established. For some, returning home would be several months later and may depend on your employability back in civilian life. The horror of war stopped but the business of rebuilding the peace and finding a new normal for life was just beginning. As we remember at this time the 14 men who lost their lives from this village during the conflict, let us also think of those who were able to return and who carried with them the memories of war into peace times, those who came back to this community battle-scarred in mind and limb and became part of making the peace. Jesus said 'Blessed are the peacemakers for they shall be called the children of God'. Liz

Parish Notices

Charles Lister
of Berridges Lane
Died October 15th 2018
Aged 88 years
R.I.P.

CHRISTMAS DECORATION

All Saints church will be holding their Christmas Tree Festival over the weekend of December 1st and 2nd. Opening times are 10.00am to 5.00pm on both days, with a service to close the festival at 5.00pm on the Sunday. This year the theme is 'Peace and Goodwill'.

There will be the usual musical entertainment during both days, and refreshments available. Entries of decorated displays from groups, businesses and individuals are invited and you should find an entry form within your Bugle this month.

REMEMBERING

All Saints church will be hosting an exhibition commemorating the anniversary of the end of the Great War. 'We Will Remember Them' acknowledges those men of this parish who gave their lives, those who returned and those who fought the battle on the Home Front.

Open Saturday only, 10.00am to 5.00pm. Light refreshments served all day.

In the evening the Harmonics Community Choir will give a concert of contemporary songs and music at 7.30pm.. Tickets at the door: £5 (children free), tea/coffee and biscuits included.

Parade and Service of Remembrance Sunday 10.45am.

MORE BRASS

Forester's Brass Band will be returning for a special Christmas Concert in church on Sunday, December 9th at 7.30pm.

✠ CHURCH SERVICES ✠

Hexagon Benefice

- 4 9.30am Communion Mowsley with Shearsby
9.30am Morning Prayer HB
11.00am Communion Thed.
11.00am Morning Prayer B'thorpe
6.00pm Communion Arnesby
- 11 10.45am Joint Service of Remembrance HB
- 18 10.30am United Benefice Communion Service Mowsley
- 21 Wednesday Messy Church HB
- 25 9.30am Communion Shearsby
9.30am Morning Prayer Mowsley
11.00am Communion Arnesby with B'thorpe
4.30pm Promise Keepers HB

Short Communion every Wed. 9.15am HB

Churchwarden:

Diana Jones 880741

Rector:

Liz Bickley 880351

Methodist Church

- 4 Rev Andrew Murphy (Com.)
11 10.45am Join with All Saints
18 Mrs Jeanne Moore
25 10.30am Join with All Saints
Chapel services Sunday 4.30pm.
All Welcome

Contacts:

Rev. Andrew Murphy 462889

Senior Church Steward:

Mr. A Lloyd Jones 880343

St Mary's Roman Catholic Church

Services every Sunday 8.30am.

Contact:

Robert Constable-Maxwell 880361

Father Owen O'Neil 462359

ALL SAINTS FLOWER ROTA

November:

Heather O'Connor

'JJ's Kiddycare'



- *OUTSTANDING* Ofsted grading
- * FREE Pre-school sessions for 2, 3 & 4 year olds
- * Full Day Care 0-5yrs
Situated on a farm site between South Kilworth and Welford
- * Breakfast and After School clubs. (4-14years)
- * Holiday Clubs during all Northants & Leics school breaks

Tel no. 01858 575642
www.jjs-kiddycare.co.uk



Station Road, North Kilworth, Lutterworth,
Leicestershire LE17 6JB.
01858 881723, 07977909806
northkilworthwharf@tiscali.co.uk
www.northkilworthwharf.com

DAY BOAT HIRE
from £120

LOCAL COAL
DELIVERY from £9.90
for 25kg bag

DIARY DATES for NOVEMBER

Tuesday 6 th	Bosworth Art Group, 10.00am - 12.30pm Pavilion
Tuesday 6 th	Parish Council meeting, 7.30pm Committee Room, Village Hall
Wednesday 7 th	Historical Society meeting - <i>The Life & Times of Sir William Turville</i> 7.30pm Pavilion
Friday 9 th	Causeway Coffee Morning, 10.00am - 11.30am Pavilion
Saturday 10 th	Great War Displays & Open Church, 10.00am - 5.00pm All Saints Church
Saturday 10 th	Harmonics Community Choir Concert, 7.30pm All Saints Church
Sunday 11 th	We Will Remember Them & Beacon Lighting, 6.30pm Playing Field
Friday 16 th	Mobile library
Saturday 17 th	Parish Council Surgery, 10.00am - 12.00pm Parish Office
Saturday 17 th	Millennium Wood work party, 9.30am - 12.30pm
Sunday 18 th	Craft Group Annual Craft Fair, 11.00am - 3.00pm Village Hall
Thursday 29 th	Village Lunch, 12.30pm Kilworth Springs Golf Club

FORTHCOMING EVENTS

Sat. Dec. 1 st & Sun. Dec. 2 nd	All Saints Christmas Tree Festival
Sat. Dec. 1 st & Sun. Dec. 2 nd	Welford Watercolourists Exhibition & Sale of Works
Sat. December 1 st	FOBS Casino Night
Wed. December 6 th	Historical Society Social Evening & Quiz
Sat. January 12 th 2019	<i>Govannen</i> return!

LOCAL PLANNING NEWS

The following applications have been submitted to Harborough District Council:

- 18/01384/FUL Removal and replacement of roof with increased height and dormer windows, 47 Berridges Lane
- 18/01647/FUL Erection of a single storey agricultural storage building (retrospective) (rev. sch.), Woodside Farm, Theddingworth Road

Recently determined applications:

- 17/00159/FUL [Approved] Siting of a timber cabin for use as overnight groom accommodation (retrospective), Land off Leicester Road
- 18/01276/FUL [Approved] Conversion of stable block to residential accommodation, land off Leicester Road
- 18/01288/FUL [Approved] Erection of a two story side extension, Dene Lodge, Theddingworth Road
- 18/01300/FUL [Approved] Erection of a two storey rear extension, single storey rear extension and porch extension, 25 Bell Lane
- 18/01313/OUT [Approved] Outline application for the erection of two dwellings (All matters reserved), 9 Broad Lane

Current applications may be inspected during normal working hours at the Council Offices, The Symington Building, Adam & Eve Street, Market Harborough.

Planning applications and other aspects of local government can now be viewed on-line at www.harboroughonline.co.uk

MOBILE LIBRARY

NOTE CHANGES TO SERVICE

The Mobile Library will now be calling on the third Friday of each month.

STOPS & TIMES

School, Welford Road:	10.35am - 11.35am
Berridges Lane:	11.40am - 12.20pm
Butt Lane:	12.25pm - 1.00pm

Now lending *Talking Books* on CD & tape

***** You can now renew on-line or by phone *****

BUGLE.....FREE ADS.

Email: bosworth_bugle@talk21.com

FOR SALE

BRIO TRAIN SET with over 63 track pieces plus turntable, viaduct, wobbly bridge and shed. In a wheeled wooden box £50
Tel: 880601 Caroletrevor68@btinternet.com

NC Decorating
A STROKE OF PERFECTION
Nobby Clarke
QUALITY PAINTING & DECORATING FOR OVER 25 YEARS
07761040218
ncdecorating.co.uk
5 Lammas Close - Husbands Bosworth - Leicestershire - LE17 6LL

MILITARY VEHICLE DRIVING AND TANK BATTLES AT ARMOURGEDDON
Military Museum
One of the Largest Collections of
WWII Vehicles and Militaria in the Midlands.
Our under cover collection includes post war vehicles, Main Battle Tanks, as well as an excellent selection of other American, German and British vehicles. With interactive displays and lots of things to see. Visit on a game day (Saturday, Sunday or selected Wednesday—April to October) and you will get to see some of our vehicles driving around.
01858 880 239
Chat to us Online www.armourededdon.co.uk
Office hours Monday to Friday 0900hrs—1700hrs