

ARSONIST JAILED

We hear that the arsonist who targeted the village indiscriminately in August has been locked up after pleading guilty to three counts of arson and endangering lives.

Daniel Milburn, 33, of no fixed abode, had been drinking in The Bell Inn earlier in the evening and claimed to be collecting for charity.

After leaving the pub he took drugs before venturing out on his late-night rampage, setting fire to bins outside Brook House residential home in Bell Lane, torching bins beneath the Mowsley Court flats and setting fire to a camper-van in Church Street.

Leicester Crown Court heard that he had remained at the scene in Bell Lane and appeared to be helping remove the burning bins that he had placed beside the building, claiming that he was a trained fire-fighter. Lives of the 30 elderly and infirm residents of Brook House and the occupants of Mowsley Court were put at risk by his actions.

Milburn claimed he was drunk at the time of the incidents and had no recollection of the events of the evening. However, he pleaded guilty in court to three counts of arson and recklessly endangering life and was sentenced to 5½ years in jail.



LEGION HONOURS

Although much of the fervour surrounding the anniversary of the ending of the Great War has now subsided, many aspects of the period of remembrance carry on.

In Husbands Bosworth we are pleased to hear that the local branch of the Royal British Legion has been awarded a grant from the district council for the installation of a lasting memorial to mark the 100 year anniversary.

After discussion with the church, the group has decided to replant the memorial garden around the village War Memorial. A gravelled path will be created along with a larger bed, accommodating 14 rose bushes, in memory of the men of Husbands Bosworth who didn't return from the Great War. The upgrade of the flower beds will also incorporate a commemorative plaque to those who gave their lives.

WALCOTE WARY

According to figures released by the Leicestershire Road Safety Partnership, the Walcote average speed camera has 'caught' over 1500 speeders in its first month of operation. The cameras, installed on the approaches and exits to Walcote on the A4304, record the average speed between a vehicle entering and leaving the village's 30mph zone. Since their activation in the middle of September the cameras have clocked over 50 vehicles a day exceeding the speed limit.

Although seen primarily as road safety and speed reduction measures, the cameras, and those at Measham and Sharnford, have generated over £38,000 in their first month, which the county council is hoping can be used to fund a roll-out of similar devices along other speeding hot-spots in the county.

YOUR FESTIVE BUGLE

The next issue of your *Bosworth Bugle* will be our famous Festive Edition, which will be delivered in time for Christmas!

As usual the issue, which will be packed full of Ralph's dubious jokes and devious quizzes to test and entertain family and friends, will be with you over the festive period.

BUGLE ADVERTISING

Advertising space in the *Bosworth Bugle* is very limited, and is allocated on a first-come first-served and pre-paid basis.

Those wishing to advertise in the newsletter for the 2019 year should contact Ralph Horton on 880526 or email: bosworth_bugle@talk21.com as soon as possible.

Download an application form at: www.husbandsbosworth.info/bosworth-bugle

Bosworth Tots
9.30am – 11.30am
Husbands Bosworth Village Hall

£2.50 First child
£1.50 Babies under 1
50p for siblings

Stay & Play session ~ From birth to pre school ~ Weekly activity
Snack time ~ Baby weighing scales ~ Plenty of cuppas and a friendly welcome and chat!

Bring your little one(s) and join in the fun!

Session Dates

Thursday 13th December ~	Christmas Crafting
Thursday 20th December ~	Hartbeeps Christmas Party and Visit from Santa

For more information please contact Abby Ascough 07766053949 / Absclarke@aol.com

BUGLE POSTBAG

From Di Jones, Churchwarden

On behalf of All Saints Church members, I would like to say thank you to everyone who contributed in any way to our World War I weekend in church. We could not have done it without the displays, flowers, cakes, washing up, hoovering, stewarding and making of endless cups of tea!

This year the names read out from the memorial, through our displays in church, all became people - we learned what they did in civilian life and where they lived. We also got to know about those who served in the war, but who thankfully returned to resume their lives in Husbands Bosworth.

The concert by the Harmonics Community Choir was enjoyed by all on Saturday and there could not have been many without a tear in their eye or lump in their throat when the Last Post was sounded at the end.

We were blessed on Sunday with the parade, fly past of aeroplanes from the Gliding Centre and, of course, the Brownies, Rainbows, Beavers and younger Scouts who joined older members of the congregation to pay their respects.

The whole weekend was a fitting tribute to those who served their country 100 years ago.

From Jennifer Rogers, Craft Club

A big Thankyou to all who helped and supported the Craft Fair. Those who worked so hard in the kitchen, all the refreshment makers and the stall holders and everyone who helped in any way. We made £550 after expenses and will be sending it to The Lifeboats and to Childline.

POLICE FILE

Recently reported crimes

- Damage to vehicle, Fernie Court, HB
- Theft and making off without paying, Petrol Filling Station, North Kilworth
- Violence and possession of weapons, Dag Lane, North Kilworth
- Attempted theft of parked vehicle, Walton Road, Kimcote
- Damage and theft from vehicle, Woodford Glebe, Welford

STOCK RUSTLING

Northamptonshire and Leicestershire police are investigating a recent spate of sheep rustling incidents from remote and outlying premises in the north Northamptonshire and south Leicestershire areas.

In cases reported so far only small numbers of animals, threes and fours, have been taken at a time, suggesting a van or small lorry has been used to carry the them away. Evidence of attempts to take animals in other cases seem to have been thwarted by uncooperative sheep! In some cases there is evidence to suggest that some of the animals have been slaughtered on site.

Police in both counties are urging stock-keepers to report any disturbances of animals or suspicious activity around stock fields, even if nothing has been taken, in order to assess the scale of the problem and build up a picture of the offences.

THE BUGLE TEAM

Editor:

Melvyn Forman
10 Church Lane Tel: 880281
Email: bosworth_bugle@talk21.com
Treasurer & Advertising:

Ralph Horton
18 Highcroft Tel: 880526

Contacts:
Mike & Sylvia Price
3 Highcroft Tel: 880902

Jo Horton
18 Highcroft. Tel: 880526

Frances Smith
10 Butt Lane Tel: 880225

Penny Mattock
9 Fernie Court Tel: 881140

Heather O'Connor
16 Fernie Court Tel: 880165

Postal Subscription & distribution:
Melvyn Forman Tel: 880281
Email: bosworth_bugle@talk21.com

www.husbandsbosworth.info

COPY DEADLINE
15th OF THE MONTH
PRECEDING PUBLICATION

POLICE FILE

IF YOU HAVE INFORMATION ON ANY
CRIMINAL ACTIVITY CALL MARKET
HARBOROUGH POLICE on 101

Neighbourhood Watch Co-ordinator
Stephen Bilbie
stephenbilbie@btinternet.com

NW Community Scheme No. 2123
Eastern Counties Policing Team
PC 1261 Andy Cooper
PCSO 6569 Peter Willson
PCSO 6008 Laura Bolton
Voicemail Service 0116 2485675

CRIMESTOPPERS
FREEPHONE 0800 555111

ACTION FRAUD
www.actionfraud.police.uk
0300 123 2040

Karting

Leicester Airport, Gattree Rd, Gt Stretton, Leicestershire. www.stretton2000.com

The UK's Premier Karting experience

↔ 850M floodlit racing circuit ↔ Licensed Bar & Function room ↔ Stag & Hen Parties
↔ Corporate & Team Building Activities ↔ Childrens Parties
↔ 60 Mph, 300cc Thunder Karts ↔ Kart Club & Championship Races
↔ Junior Kart's Available ↔ Gift Vouchers Available
↔ Arrive & Drive Sessions

Stretton Circuit 0116 259 2900

Open 7 days a week 10.00am - 9.00pm

COMPLETE CAR CARE

Accident repair specialist
Bodywork, dent, scratch and stone-chip repair
Servicing, alloy refurbishment, welding
MoT repair
Valeting, full body polish
Parking sensors, tyres & exhausts, etc. fitted
Call Ben on 01858 880404
bencompletecarcare@outlook.com

BOSWORTH IN FOCUS

A TASTE OF BOSWORTH

Caramelised Rice Pudding

A very quick and simple dessert, but ideal to finish a meal with family or friends over the festive season.

Ingredients

(Serves 4)

1 x 400g can rice pudding

4 tablespoons extra thick double cream

4 tablespoons caster sugar

1 jar fruit compote eg. apricot, rhubarb, plum, apple

Method

Fill 4 x ramekins up to 1/3rd full with fruit compote. Empty can of rice pudding into a bowl and gently fold in the cream. Divide the creamy rice mixture equally over the compote. Sprinkle 1 tablespoon of sugar over each of the rice-filled ramekins. Melt gently under a medium grill, then turn heat up to caramelise the sugar. Chill the ramekins prior to serving.

Jackie Kerr

WILD ABOUT BOSWORTH

Robin - *Erithacus Rubecula*

In a survey carried out in 2015, over a third of people who voted selected the robin as Britain's favourite bird. Perhaps the bird's chirpy song adds to their attraction. Robins are the first to sing in the morning and usually the last to fall quiet in the evening. Indeed, those living near to street lights continue singing into the night. Robins pair up in spring and remain as a couple until late into the year.

Around Christmas time, the males seek out a territory and begin singing a doleful song to attract next year's partner. Of course, there are many battles between competing males and, not infrequently, these result in the death of one of the combatants.

Once paired up, the female builds a nest and lays a clutch of four to six eggs. The male helps by feeding the female; bringing her up to a third of her food intake. He then continues his role as provider after the chicks have hatched. The chicks lack the red plumage of adults which, in addition to aiding camouflage, inhibits their father's aggressive behaviour. The parental instinct of robins is so strong they can sometimes be seen feeding fledgling birds of other species.

Severe weather can drastically reduce robin numbers, and bird tables have a significant impact on survival rates. The robin's favourite is mealworms; the variety I purchase is described as "Wildly Tasty?!" Other high calorie foods can also be life savers.

Mike Chanter



© Francis C. Franklin

WEATHER LOG

OCTOBER 2018

Highest temp: 24.1°C on 10th

Lowest temp: -1.7°C on 31st

Air frosts: 2

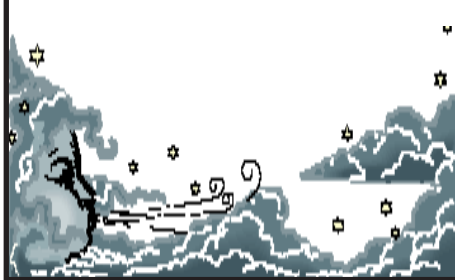
Rainfall Total: 62.7mm (2.47")

Wettest day: 30mm (1.18") on 14th

Rain days: 15

Snow: 0

Total sunshine: 172.8 hours



The Gliding Centre has been in touch to remind us that they offer all levels of flight training at their base at Husbands Bosworth airfield.

"We have a modern fleet of gliders, a motor glider, three iconic Chipmunk tow planes and can offer training from beginners to instructors, motor glider ratings and even tug pilot training. For would-be glider pilots we offer a whole range of lessons from a first-flight experience to intensive courses, which can be purchased from our website at www.theglidingcentre.co.uk."

Carol Winfield

GOVANNEN

Govannen, the perfect antidote to the post-Christmas blues, are performing for us again at the Village Hall on Saturday, January 12th.

Will everyone who has reserved tickets please pay Ralph at 18 Highcroft by December 15th. This will then give us time for any cancellations to be offered. There are still a few tickets remaining - if you are interested please phone Ralph on 880526 for more information. Tickets are priced at £15 each, which includes Sam's famous pie and peas. Profits will be used in support of the Village Hall.

Ralph Horton



NC Decorating
A STROKE OF PERFECTION
Nobby Clarke
QUALITY PAINTING & DECORATING FOR OVER 25 YEARS
07761040218
ncdecorating.co.uk
5 Lammas Close - Husbands Bosworth - Leicestershire - LE17 6LL



TW
LANDSCAPE & PROPERTY SERVICES
PLEASE CONTACT THOMAS FOR A NO OBLIGATION FREE QUOTE:
07525064220
twlandpservices@outlook.com
20% AUTUMN / WINTER DISCOUNT
Offering a wide range of Hard & Soft Landscaping:
- Fencing & Repairs
- Garden Maintaining & Clearance
- Tree & Hedge Pruning
- Turfing
- Driveway Installation & Maintenance
- Patio Installation & Maintenance
- Decking
- Timber Cabin, Shed, Stable & Garage Builds
- Ponds & Water Features
- Concrete Bases
- Household Repairs & Maintenance

SCHOOL REPORT

HUSBANDS BOSWORTH C. of E. PRIMARY SCHOOL

Head Teacher Alan Eathorne 87 pupils currently on roll

FOBS NEWS

FOBS would like to say a huge 'thank you' to Springfields Supermarket for their very generous donation from the 'Make a Difference Locally' initiative; the charity administered by Nisa, which adds value to communities through a direct donation scheme from their independent stores. The school, children and parents are all very grateful for their support.

Everyone is invited to join us for our Carols in the Playground evening on Monday, December 17th from 6.00pm to 7.00pm. Stall-space is available. Please email Abby at: absclarke@aol.com to check availability.

BYGONE BOSWORTH

Images from the Historical Society's Archive Collection

A synchronised time system was first introduced across most of Britain on December 1st, 1847, when the country abandoned local time. Local time varied from place to place, and a new standard time, Greenwich Mean Time (GMT), was adopted to regularise timekeeping. It was often referred to as 'railway time', reflecting the importance of accurate and consistent timekeeping across the emerging railway networks. The vast majority of Great Britain's public clocks were standardized to GMT by 1855.

Up until then synchronisation of time between communities meant little, as the chief reference would be the position of the sun wherever you happened to be at the time. So, it mattered little if, in Bosworth, you thought it was half past eleven and in Theddingworth they felt it was more like a quarter to twelve!

Reasonable local accuracy was observed by the Church, primarily so that their congregations turned up on time for services. Hence the provision of the church clock, held high enough for the community to see it and reinforced by the striking of the hours.



At Bosworth we have early timepieces incorporated into the fabric of the building.

Traditional gnomon sundials adorn two faces of the finial above the south porch door -

orientated to provide a morning sundial and an afternoon sundial, (although our dials appear to be misaligned by about an hour, presumably positioned to suit the aesthetics and location rather than as a serious attempt at time-keeping!)

Overlooked in its obscurity though is a rudimentary sundial cut into the quoin-stone to the left of the porch doorway. This is an early tide or mass dial, which indicated the times of day that serious church prayer was expected - the canonical or mass tides. Tide is a corruption of *tīd*, the Anglo-Saxon periods of the day, as in modern-day morning-tide and even-tide.

Our mass dial could be of truly ancient origin; probably repositioned to its present location when the south porch was built in 1746. A wooden or stone dowel (or finger...) inserted into the centre hole would cast a shadow across the markings in the lower quadrant,

indicating the calls to prayer, which would probably be sounded on the church bell.

At any rate dials of this nature were considered old-fashioned and superseded by mechanical clocks by the mid 15th century and All Saints church clock dates to the early 1600s.

TRADE DIRECTORY 2018

Armourgeddon Tank Paintballing Centre
Military vehicles, paintball & outdoor activities
Contact: Tracey 01858 880239

Croft Farm Bed & Breakfast
AA 4**** accommodation
Contact: Jane Smith 880679

Mike Price Heating Engineer
Oil-fired boiler servicing & repair
Contact: Mike Price 880902

Totally Trees Ltd.
Tree surgery and stump grinding
Contact: Jacqui Mitchell 01455 554182

Woodpecker Tree Surgery
All aspects of tree surgery undertaken
Contact: Chris Wright 880818



**WOODPECKER
TREE SURGERY**

All aspects of tree-work undertaken from dismantling large roadside trees to pruning and reshaping small garden trees.

We also offer a stump grinding service.
Professionally qualified and insured.

For free quotation and advice call
Chris on: 01858 434591
www.woodpeckertreesurgery.co.uk

NATIONAL FEDERATION OF BUILDERS

P.C. BUILDING SERVICES LTD
Established 27 years

NHBC

Complete building service
Specialist in new build
Quality renovations & Extensions

Tel/Fax 01858 881202
Email: pcbuildserv@btinternet.com

Walton Grange, Bosworth Road
Walton, Lutterworth, Leics LE17 5RW

ACTIVITY & INTEREST GROUPS

ACTIVITY GROUPS 2018
All Saints Parochial Church Council
 Contact: Diana Jones 880741
Baby-Sitting Circle
 Contact: Claire Scott 880295
Badminton Club
 Contact: Ralph Horton 880526
Beaver Scout Troop
 Contact: Norman Byrd 07973 532678
Bosworth Art Group
 Contact: Melvyn Forman 880281
Bosworth Tots
 Contact: bosworthtots@hotmail.co.uk
Conservative Association
 Contact: Sue Fisher 880026
Craft Group
 Contact: Gail Wilmot 880413
Girlguiding Rainbows & Brownies
 Contact: Bonnie Kettell 882148
Historical Society
 Contact: Melvyn Forman 880281
1st Kilworth Scouts/Beaver unit
 Contact: Charles Lauder Jr. 01162 478430
Lutterworth African Drumming Group
 Contact: Ralph Horton 880526
Methodist Church Council
 Contact: Rev. A Murphy 462889
Millennium Woodland Trust
 Contact: Jackie Fletcher 880910
Royal British Legion
 Contact: Robert Maxwell 880361
South Kilworth Art Club
 Contact: Maggie Roberts 01858 682173
Tennis Club
 Contact: Jennifer Rogers 880401
Workers Education Association
 Contact: Sally Sherratt 571064

HISTORICAL SOCIETY

The next meeting of the Historical Society will be the annual Social Evening and Quiz Night, on Wednesday, December 5th, at the Sports Pavilion, 7.30pm. Members are invited to bring along light-bites for the 'bring and share' table - soft drinks and suitably festive mulled wine will be served to lubricate the little grey cells!

We kick off the new year with the story of aviation pioneer, Percy Pilcher who came to grief following a flying accident at Stanford Hall in 1899. Roy Smart will tell us of the man who, had he been more fortunate, may have changed the history of powered flight, nearly 4 years before the Wright brothers monumental first flight. The meeting is on Wednesday, January 9th 2019, 7.30pm Sports Pavilion. All welcome - door charge of £2.50 for non-members.

For our meeting on February 6th, we will be welcoming back University of Leicester archaeologist, Mathew Morris, who will be looking at the archaeology of Leicestershire's parks and open spaces.

LIFE AND TIMES OF SAMUEL PEPYS

Lubenham Heritage Group members are presenting their dramatised take on "Samuel Pepys - This is Your Life" on Tuesday, December 11th at 7.30pm at Lubenham Village Hall. Tickets are £3 per person to include festive refreshments. Call 07976647592 or email lindastraw@live.co.uk to book tickets or for more information.

BOSWORTH BELLES

Bosworth Belles ladies social group will be hosting a Christmas Wreath-making workshop, on Thursday, December, 6th, 7.30pm at the Sports Pavilion, The cost will be £20 per person, to include all materials. Places are limited so, to secure your place please confirm with Penny 881745 or Hayley as soon as possible. A £5 deposit is needed.

VILLAGE LUNCH

The next Village Lunch will be the Christmas Lunch on Wednesday, December 19th at Kilworth Springs Golf Club. The cost of the traditional festive meal to include tea/coffee, crackers, party hats, mince pies and festive fun is £12.50. Catch up with old friends and make new ones in a relaxed and friendly atmosphere. Diners are asked to meet at 12.30pm to sit down at 1.00pm. Raffle for a hamper in aid of LOROS. To book a place or for more information please call Janice on 880668

MILLENNIUM WOOD

The next Millennium Wood work party day will be on Saturday December 8th, 9.30am to 12.30pm. Volunteers are assured a friendly welcome and, as a special treat, a festive cup will be served at 'half-time' to warm the cockles! Tools are provided - all you need is stout footwear, gloves and boundless enthusiasm... Call Jackie on 880910 for details.

BOSWORTH ART GROUP

Bosworth Art Group is a small, friendly and informal gathering of artistically minded souls, which meets on Tuesday mornings, fortnightly, in the Sports Pavilion, Kilworth Road. Art in any medium and all levels of skill are welcomed. We are a self-help group, with no formal tuition. Fees are 'pay-as-you-go', at £2.50 per session, so you can just turn up when it suits, with no commitment. Our next meeting is on Tuesday, December 4th, 10.00am to 12.30pm. Call Melvyn on 880281 for more information.

CRAFT GROUP

The Craft Group meets on the second Wednesday of each month in the Committee Room of the Village Hall. This is a friendly and informal gathering where craft-minded people can pick up new ideas and practise their craft in a relaxed atmosphere away from the distractions of home life. For details contact Gail on 880413.

VILLAGE HALL BOOKINGS
 01858 880426 07766022901
 husbandsbosworthvh@gmail.com
 www.husbandsbosworthvillagehall.co.uk
SPORTS PAVILION ENQUIRIES
 Audrey Marlow 880316

F&W Plumbing & Heating Services Ltd
 22 Elmcroft Road, North Kilworth, LE176HX

Bespoke bathroom & kitchen design and installation
 All types of wall and floor tiling
 Hot and cold water systems
 Gas-fired boiler installations and system upgrades
 Unvented hot water systems
 Gas Safe and Bepec registered

Contact Jason on 07866741261
 Email: jayspanner@btinternet.com
 www.fandwplumbingandheatingservices.co.uk
 Over 30 years experience in designing and installing contemporary and traditional kitchens and bathrooms
 Project manage personally with all associated trades for a co-ordinated high quality finish with minimum disruption

MIKE PRICE HEATING
 Oil-fired boiler & heating systems
 Servicing & Repairs

Ring 0771 4245290 mobile
 01858 880902 home

Your local technician - on your doorstep



PARISH COUNCIL NEWS

LEICESTERSHIRE COUNTY COUNCIL RECYCLING & WASTE SITES

Winter Opening Times

Kibworth and Lutterworth

Monday 9.00am - 4.00pm
Tuesday - Closed
Wednesday - Closed
Thursday 9.00am - 4.00pm
Friday 9.00am - 4.00pm
Saturday 9.00am - 4.00pm
Sunday 9.00am - 4.00pm

Market Harborough

Monday 9.00am - 4.00pm
Tuesday 9.00am - 4.00pm
Wednesday 9.00am - 4.00pm
Thursday - Closed
Friday - Closed
Saturday 9.00am - 4.00pm
Sunday 9.00am - 4.00pm

ROAD CLOSURE

Theddingworth Road, Mowsley will be closed to allow essential works to be carried out from January 7th for up to four months. The planned diversion route will direct traffic via the A5199, Husbands Bosworth and Theddingworth and *vice versa*.

PARISH OFFICE HOURS

Monday Closed
Tuesday 14:45 – 17:45
Wednesday 08:30 – 10:30
Thursday 15:45 – 17:45
Friday 08:45 – 11:45
Saturday 10:00 – 12:00 3rd Sat. ONLY
Sunday Closed

QUARRY NEWS

At the recent meeting of Husbands Bosworth Quarry Liaison group, members heard that production volumes remained steady at approximately 60,000 tonnes per annum, which is mainly processed on site as bagged and bulk derivatives. Work is concentrating on drawing in final reserves from the site to the west of Welford Road whilst preparatory work to open up reserves off Butt Lane is in progress. Excavation on the Welford Road site is expected to be finished by the end of 2019. The quarry operating company, Tarmac, are presently considering applying for further permission to extend the workings off Butt Lane, which it is estimated, would extend the production for a further 12 months.

Concerns were raised about the cleaning of the Butt Lane bridleway crossing, especially if further aggregate haulage is envisaged. Tarmac agreed to monitor the situation and look into installing a raised crossing 'slab' to help drainage if this was necessary. The problem of fouling of the cemetery layby was raised - the quarry manager was asked to remind drivers not to 'lay up' in the cemetery layby and agreed to arrange for the layby to be swept regularly by the road-sweeper. The meeting also noted the recent renewal of the roadside fencing along Butt Lane.

Landfill operations have seen an upturn in line with a general increase in activity within the building industry. Recent contracts from the Leicester Road (Airfield Farm) development at Market Harborough and the Newton Lane development at Wigston have seen significant input of inert waste to the landfill site.

The restoration schedule of the whole site has been revised and is now projected to be completed by 2024-25. Much of the land off Butt Lane is to be restored to lower profiles, incorporating a wetland and water-bodies. The land to the east of Welford Road will be returned to agriculture and the area to the west of Welford Road will be restored to agriculture, water-bodies and amenity land.

The Quarry Liaison Group meets every six months. The next meeting is scheduled for April 2019. Any concerns should be addressed to the Clerk to the Parish Council.

SID REPORT

Readings from the Speed Indicator Device

Welford Road outbound

Period: 24.10.18 - 31.10.18
Vehicle movements: 9113 Av./day: 1302
Average speed: 31.11mph
Highest recorded speed: 56mph

Welford Road inbound

Period: 31.10.18 - 07.11.18
Vehicle movements: 9070 Av./day: 1296
Average speed: 29.69mph
Highest recorded speed: 64mph

Welford Road inbound

Period: 07.11.18 - 14.11.18
Vehicle movements: 9229 Av./day: 1324
Average speed: 29.19mph
Highest recorded speed: 66mph

Kilworth Road inbound

Period: 14.11.18 - 21.11.18
Vehicle movements: 12577 Av./day: 1797
Average speed: 35.08mph
Highest recorded speed: 74mph

LOCAL OFFICERS

Husbands Bosworth Parish Council:

Councillors
William Fletcher (Chairman)
Melvyn Forman
Susan Fisher
Patricia Hobson
James Shelley

Parish Clerk

Sarah Mason
2a Mowsley Road
H.B. LE17 6LR Tel: 881109
clerk@husbandsbosworthpc.org.uk

District Councillor

Lesley Bowles
l.bowles@harborough.gov.uk

County Councillor

Blake Pain Tel: 01858 411021
blake.pain@leics.gov.uk

Member of Parliament

Neil O'Brien Tel: 0207 2191802
neil.obrien.mp@parliament.uk

'JJ's Kiddycare'



- *OUTSTANDING* Ofsted grading
- * FREE Pre-school sessions for 2, 3 & 4 year olds
- * Full Day Care 0-5yrs
Situated on a farm site between South Kilworth and Welford
- * Breakfast and After School clubs. (4-14years)
- * Holiday Clubs during all Northants & Leics school breaks

Tel no. 01858 575642
www.jjs-kiddycare.co.uk



Station Road, North Kilworth, Lutterworth,
Leicestershire LE17 6JB.
01858 881723, 07977909806
northkilworthwharf@tiscali.co.uk
www.northkilworthwharf.com

DAY BOAT HIRE
from £120

LOCAL COAL
DELIVERY from £9.90
for 25kg bag

CHURCH NEWS

All Saints Parish Church, Methodist Chapel & St. Mary's Roman Catholic Church

FROM THE RECTORY

One of my earliest memories from school was from being in reception class and being an angel in the school nativity play. We didn't get any words to say - or I didn't anyway - but we did get to sing a song and it's one I still remember. 'Glory to God. Glory to God. Glory to God in the highest. On earth peace, goodwill to men, on earth peace goodwill to men.' There was me, draped in a white sheet with a tinsel halo in my long brown hair, being an angel for the first and last time. With several other 4 year old angels we made up the multitude of the heavenly host praising God, singing our very simple song. And somewhere there is photographic evidence! We have taken part of the message the angels sang as our theme for our Christmas Festival this year - 'Peace and Goodwill to all'. This is partly because we have just commemorated 100 years since the end of World War I. After the Armistice the work began to establish and keep the peace. Peace is still needed in our world today - we see war-torn areas on our news reports and pictures in our newspapers, we hear of people persecuted and imprisoned for their beliefs, we know of people who are troubled in their mind - we might even be those people who long for peace in our lives.

Peace can be hard to find, there are many things that can rob us of our peace - financial worries, broken or difficult relationships, poor health, the list could go on. Peace is one of the results of having God in our lives - it is one of the fruits of the Spirit of God - and the peace he offers is not just a state of calmness, but a condition of wholeness.

The peace God wants us to know in the earth is not just the absence of war, but to really flourish and blossom as a society; the peace he wants us to know in our lives is not just the absence of things to cause anxiety and distress, but to know we are loved and cared for, to be achieving the best we can be and to be full of joy. The peace God wants us to know is only given by him, and it holds us in our innermost being, safe and secure, whatever is happening in our lives or round about it.

Jesus comes into our world, which we celebrate each Christmas, to make finding that peace possible, the angels came to announce his arrival, bringing a little bit of heaven's excitement about this to earth. I pray that this Christmas you will look forward to remembering the Christmas events with that same excitement, and find peace in your homes and hearts which brings you joy. May you reflect upon the Christ-child with awe and wonder, and catch a glimpse of his glory.

Liz

SERVICES DURING ADVENT

- Advent Service, Sunday, December 2nd, 5.00pm following the Christmas Festival
- Messy Christingle Service, 4.30pm Wednesday December 19th
- School Christmas Service, Thursday, December 20th at 2.30pm
- Carol Service December 23rd, 6.00pm
- Crib Service Christmas Eve, 5.00pm
- Midnight Communion, Christmas Eve, 11.15pm
- Christmas morning service, 10.30am at Bruntingthorpe

CHURCH CONCERT

Foresters Brass Band will be returning to All Saints on Sunday, December 9th at 7.30pm with their inimitable take on Christmastide...
The Concert will be a mixture of Christmas music, carols to sing and mixed in with the Big Band Jazz of Glen Miller!
Tickets are £8 (Children free) on the door, including light refreshments in the interval.
Call Di on 880741 for further information.

✠ CHURCH SERVICES ✠

Hexagon Benefice

- | | |
|----|---|
| 2 | 9.30am Communion Shearsby with Mowsley
11.00am Communion Thed.
11.00am Morning Prayer B'thorpe
6.00pm Communion Arnesby |
| 9 | 9.30am Morning Prayer Shearsby
9.30am Arnesby Family Worship
11.00am Communion HB
4.00pm Christingle B'thorpe
6.00pm Patronal Mowsley |
| 16 | 10.30am United Benefice Communion Service Arnesby
6.00pm Carol Service B'thorpe
6.00pm Carol Service Shearsby |
| 18 | 6.00pm Carol Service Mowsley |
| 19 | 4.30pm Messy Christingle HB |
| 23 | 9.30am Communion Mowsley
4.00pm Carol Service Thedd.
5.00pm Carol Service HB
6.00pm Carol Service Arnesby |
| 24 | 2.00pm Crib Service Arnesby
5.00pm Crib Service HB
11.15pm Midnight Comm. Shearsby
11.15pm Midnight Comm. HB |
| 25 | 10.30am Benefice Comm. B'thorpe |
| 30 | 10.30am Benefice Comm. HB |

Methodist Church

- | | |
|----|------------------------------|
| 2 | Rev Brian Kennard (Com.) |
| 6 | 11.00am join with All Saints |
| 16 | 4.30pm Carol Service |
| 23 | 5.00pm Join with All Saints |
| 30 | 10.30am Join with All Saints |

St Mary's Roman Catholic Church

Services every Sunday 8.30am.

Contact:

Robert Constable-Maxwell 880361

Father Owen O'Neil 462359



Our under cover collection includes post war vehicles, Main Battle Tanks, as well as an excellent selection of other American, German and British vehicles. With interactive displays and lots of things to see. Visit on a game day (Saturday, Sunday or selected Wednesday—April to October) and you will get to see some of our vehicles driving around.

01858 880 239

Chat to us Online
www.armourgeddon.co.uk

Office hours Monday to Friday 0900hrs—1700hrs



FLAT ROLLING • GRASS TOPPING • CHAIN HARROWING • FENCING
LAWN MOWING • HEDGE TRIMMING • GENERAL GARDEN MAINTENANCE

DIARY DATES for DECEMBER

Saturday 1 st & Sunday 2 nd	All Saints Christmas Tree Festival, 10.00am - 5.00pm
Saturday 1 st & Sunday 2 nd	Welford Watercolourists Exhibition & Sale, 10.00am - 4.00pm, Welford Village Hall
Saturday 1 st	FOBS Casino Night, 7.30pm 'til late, Village Hall
Tuesday 4 th	Bosworth Art Group, 10.00am - 12.30pm Sports Pavilion
Tuesday 4 th	Parish Council meeting, 7.30pm Committee Room, Village Hall
Wednesday 5 th	Historical Society Social Evening & Quiz, 7.30pm Sports Pavilion
Thurs 6 th	Bosworth Belles Wreath-making, 7.30pm Sports Pavilion
Saturday 8 th	Millennium Wood work party, 9.30am - 12.30pm (<i>Note date change</i>)
Sunday 9 th	Foresters Brass Band Christmas Concert at All Saints, 7.30pm
Tuesday 11 th	Lubenham Heritage Society - ' <i>Samuel Pepys - this is Your Life</i> ', 7.30pm Lubenham VH
Wednesday 12 th	Craft Group, 7.30pm Committee Room, Village Hall
Friday 14 th	Causeway Christmas Lunch at the Dog & Gun, Kilby
Tuesday 18 th	Bosworth Art Group, 10.00am - 12.30pm Sports Pavilion
Wednesday 19 th	Village Lunch Christmas meal, 12.30pm Kilworth Springs Golf Club
Friday 21 st	Mobile library

FORTHCOMING EVENTS

Sat. January 12th 2019 *Govannen return!*

LOCAL PLANNING NEWS

The following applications have been submitted to Harborough District Council:

■ 18/01926/TCA Work to trees, The Gables, 54 Bell Lane

Recently determined applications:

■ None

Current applications may be inspected during normal working hours at the Council Offices, The Symington Building, Adam & Eve Street, Market Harborough.

Planning applications and other aspects of local government can now be viewed on-line at www.harboroughonline.co.uk

BIN COLLECTION (NORMAL SERVICE) - FRIDAY DECEMBER 21st (BLACK) & FRIDAY DECEMBER 28th (BLUE)

Go to www.harborough.gov.uk/collections to download the 2019 Collection Calendar

MOBILE LIBRARY

The Mobile Library calls on the third Friday of each month.

STOPS & TIMES

School, Welford Road: 10.35am - 11.35am

Berridges Lane: 11.40am - 12.20pm

Butt Lane: 12.25pm - 1.00pm

Now lending Talking Books on CD & tape

***** You can now renew on-line or by phone *****

FOR SALE

Reeves Artist Gallery cotton canvas, deep-edged, unused £15.
Pick up HB. Text Han: 07835865642

STEFAN the HANDYMAN

- Quality woodwork
- Painting
- Tiling
- DIY
- Repairs
- Home maintenance, and lots more...!



Not sure it's a job for Stefan? Just pick up the phone and ask!

01858 881775

StefantheHandyman@outlook.com

Facebook: @StefantheHandyman

N & S A Fisher – Wigston

Spa Lane

Wigston, LE18 3QD

www.fisherswigston.co.uk

Tel. 0116 288 1101



We offer:

New Ford and Used Vehicle Sales

Ford Factory Trained Technicians

All Makes Servicing & M.o.T

FREE Ford Assist – AA Home Start & European Cover on

all Ford Servicing

FREE Collection & Delivery Service



Scott Clarke Building

07725 552566

01858 880863

sclarkebuilding@outlook.com

Alterations

Extensions

Plastering

Hard-landscaping

Block-paving

General Building Works

For free quote or design ideas call Scott

