

NEW DEVELOPMENT

A proposed development for 9 dwellings off Theddingworth Road has recently been given the green light by Harborough planners, despite a number of objections.

The development for three 2-bedroom single storey 'almshouse-style' homes, three 3 bedroom 'town-houses' and three 3 bedroom detached properties is to be built on land behind Honeypot Lane and accessed off Theddingworth Road. Green spaces, wildflower meadows and new woodland areas are planned within the development. Traffic calming measures at the village entrance, a deceleration lane on the A4304, central refuge and re-positioning of the 30mph limit are to be installed. Concerns were raised about the proximity of the development to Honeypot Farm and its established 500 cow dairy farming business. Fears were voiced that the viability of the unit could be compromised if residents in the new homes complain about the noise, smells and times of farm activity. Harborough's recently approved Local Plan has satisfied the district's quota for housing development, removing the need for additional housing to be allocated. However, Bosworth's

emerging Neighbourhood Plan, following consultation with the community in 2018, identified a preferred site for development off Welford Road as a 'fall-back' to future-proof development in an area preferred by the community.



MUDDY BOOTS

At our first Muddy Boots Forest School session at the Millennium Wood we explored the site, did a nature scavenger hunt and then had fun building and comparing two different styles of den using natural materials, tarpaulins, ropes and a bucket load of enthusiasm and imagination! Some of the children decided spy tactics were necessary and booby traps were constructed to protect the shelters from sabotage. We made hot chocolates, lounged in the hammocks and discussed how we could safely construct a rope swing. At Muddy Boots we aim to embrace nature, build confidence and have fun and learning along the way. If you would like more information about us please contact

Amanda on 07912346299 or email muddybootsoutdoorededucation@yahoo.com. The sessions are aimed at 5-11 year olds and run most Saturdays 2.00pm to 4.00pm. Booking is essential. Visit our Facebook page [@muddybootsoutdoorededucationandforestschool](https://www.facebook.com/muddybootsoutdoorededucationandforestschool).



GARDENER'S SHOWTIME

Husbands Bosworth Horticulture and Craft Show is back on track for 2019 - put the date in your diary: Sunday, August 25th. Village Hall and Judges are booked and our Primary School children have been given ready-planted sunflowers for the competition to grow the 'Largest Sunflower Head' measured petal to petal...

The Show has been a community event for more than 100 years and it is local community support and participants that will keep this tradition going for many more years to come. This year there are more than 70 classes - something for everyone! Vegetables, plants, flower arranging, jams, cakes and crafts and many more, and of course tombola / raffle prizes and refreshments will also be provided. A full schedule and the day's activities will follow shortly. In the meantime if anyone has any questions, or would like to offer support (or tombola/affle prizes), please contact Karen on 0752 3146227 or email: kide.1962@gmail.com.

BUGLE POSTBAG

From Linda Lawton

A huge thank you to everyone who supported my coffee morning in aid of The Brain Tumour Charity on Saturday 30th March.

I'm delighted to say that we raised £560, which will help to fund research into the treatment of brain tumours and into updating the current drugs that have been in use for 40 years. Thank you to everyone who attended and to anyone who gave donations or raffle prizes. Special thanks to my merry band of helpers for their hard work and support!

From Marc Rowley, Cherry Tree Close

A chance to make a difference! On Saturday, June 8th the Village Hall is hosting our annual *Action for Children* disco. This year we have a local radio DJ spinning out 90s tunes, a professionally dressed 90's hall, an on-site bar with local produce, 90s quiz with a chance to win a prize and a guaranteed night to remember.

For a chance to raise funds for a wonderful charity and get to reminisce with friends, contact Marc Rowley on 880884, text 07976 183625 or email marc.rowley1@btopenworld.com to secure your tickets. The village hall capacity is only 110 people so book early to avoid missing out on this most excellent yearly event - get ready to party again dudes!

POLICE FILE

There have been a couple of incidents reported recently, to Northants Police of lead being stolen from buildings in the area. One was a village hall and the other a sports pavilion. Please be vigilant and report any suspicious activity around similar buildings as well as church's and chapels.

Call 101 for non emergency calls and 999 if a crime is happening

With the lambing season now underway, dog owners are being reminded to keep their pets on a lead near livestock to help stop animals being hurt or killed.

'Livestock worrying' is the term used when a dog is loose around farm animals on agricultural land and acts in a way which could cause injury or suffering, such as alarming, chasing or attacking them. It is a criminal offence and, under the law, a dog worrying livestock can be shot and killed. Owners are responsible for keeping their dog under control, or can face a fine of up to £1,000. In 2018, Police received at least 30 local reports of livestock worrying, including instances of sheep found dead or injured.

Tips for safe and responsible dog walking around livestock:

- Keep dogs on a lead and under control when walking through fields of livestock
- Always stick to public rights of way and leave all gates as you found them
- If you live beside land where livestock is grazed ensure you know where your dog is at all times, and keep your property secure so your dog cannot escape
- Cows can be curious and may follow walkers. If this happens, keep facing the animal and move calmly and slowly, don't turn your back to it or run
- Steer well clear of young animals and do not try to pet them. Cows with calves will be protective and may become aggressive
- If you feel threatened by cattle when with a dog, let go of the lead so you and the dog can get to safety separately

FLOWERS BY HEATHER
Husbands Bosworth



Would you like a competitive Wedding Quote?

Please call for a free consultation.

Many years of experience.

Follow or like me on Facebook. Call on 07773 063063

THE BUGLE TEAM

Editor:

Melvyn Forman

10 Church Lane

Tel: 880281

Email: bosworth_bugle@talk21.com

Treasurer & Advertising:

Ralph Horton

18 Highcroft

Tel: 880526

Contacts:

Mike & Sylvia Price

3 Highcroft

Tel: 880902

Jo Horton

18 Highcroft.

Tel: 880526

Frances Smith

10 Butt Lane

Tel: 880225

Penny Mattock

9 Fernie Court

Tel: 881140

Heather O'Connor

16 Fernie Court

Tel: 880165

Postal Subscription & distribution:

Melvyn Forman

Tel: 880281

Email: bosworth_bugle@talk21.com

www.husbandsbosworth.info

COPY DEADLINE
15th OF THE MONTH
PRECEDING PUBLICATION

POLICE FILE

IF YOU HAVE INFORMATION ON ANY CRIMINAL ACTIVITY CALL MARKET HARBOROUGH POLICE on 101

Neighbourhood Watch Co-ordinator

Stephen Bilbie

stephenbilbie@btinternet.com

NW Community Scheme No. 2123

Eastern Counties Policing Team

PC 1261 Andy Cooper

PCSO 6569 Peter Willson

PCSO 6008 Laura Bolton

Voicemail Service 0116 2485675

CRIMESTOPPERS

FREEPHONE 0800 555111

ACTION FRAUD

www.actionfraud.police.uk

0300 123 2040

COMPLETE CAR CARE

Accident repair specialist

Bodywork, dent, scratch and stone-chip repair

Servicing, alloy refurbishment, welding

MoT repair

Valeting, full body polish

Parking sensors, tyres & exhausts, etc. fitted

Call Ben on 01858 880404

bencompletecarcare@outlook.com

BOSWORTH IN FOCUS

A TASTE OF BOSWORTH

Mexican Baked Fish

Serves 4

With the lighter nights ahead this is a quick supper dish packed with punchy flavours and takes 15 - 20 mins to cook. Serve with rice and mixed salad

Ingredients

3 tomatoes, chopped

½ tsp ground cumin

½ tsp ground allspice

½ tsp ground cinnamon

1 red chilli deseeded and finely chopped

4 tablespoons coriander leaves

4 x 175g - 200g skinless cod fillet

½ small red onion

½ small green pepper chopped

*2 tps orange juice plus 2 tps vinegar mixed
Juice 1 lime*

Method

Preheat oven to 190°C. Mix the tomatoes in a bowl with the cumin, allspice, cinnamon, chilli and coriander.

Cut 4 x squares of foil, each large enough to enclose a fish fillet. Place a piece of fish on each of the foil squares and divide the tomato mixture among the four fillets.

Mix the red onion and green pepper together and divide among fish parcels.

Stir orange and lime juice together and drizzle over top of fish and vegetable mix.

Season with salt and pepper

Wrap the fish in the foil to create a parcel and transfer to a baking dish

Bake for 15 - 20 mins, or until fish flakes easily with a fork.

Jackie Kerr

WILD ABOUT BOSWORTH

Yellow Archangel - *Lamium Galeobdolon*

As the Bluebells fade, yellow archangels take their turn in the limelight. With their golden-yellow flowers, it's a plant of woodlands and hedgerows. Swathes of it flourish along Dag Lane, with the variegations marking it as an escapee from a local garden. This variety has the nickname, 'Aluminium Archangel' because of the silver streaks in its leaves.

In appearance, it resembles a stinging nettle, but it belongs to the dead-nettle family. It has oval-shaped, toothed leaves with square stems and whorls of soft yellow, 'hooded' flowers. Internally, these bright inflorescences are decorated with reddish-brown honey guide markings, which are thought to direct pollinating insects towards the tiny drop of nectar at its base. So naturally, yellow archangel is greatly valued by bees and many other insects.

Its preferred habitat is a damp, partially shaded location. It can take time to become established but, once rooted, it crowds out other vegetation. Some colonies are thought to be truly ancient.

As for yellow archangel's alternative names, it's known as Artillery Plant, Aluminium Plant and Yellow Weasel-Snout. *Lamium*, the genus name, is the Latin word for dead-nettle. As for *galeobdolon*; there appears to be some confusion. Some suggest that galeob translates as 'to cover with a helmet,' probably referring to the upper flower petal, while *dolon* translates as 'a fly's sting'. Others believe it comes from the Greek words 'gale' meaning weasel and 'bdolos' meaning fetid smell, so - 'smelling like a weasel'!

If you're unfamiliar with the scent of these little mammals, rub some leaves of the plant and have a sniff. You've got to admit; galeobdolon makes a great insult to hurl at an adversary...

Mike Chanter

SCOUTING IN BOSWORTH

Back in February, the 1st Kilworth Cubs had a visitor from the National Deaf Children Society who taught the pack how to sign. The evening was suggested by one of our Cubs, Josh Harris, whose younger brother, Sam, is deaf. Inspired by how well the meeting had gone, Josh then suggested a signing café where guests would use sign language to order a cup of tea or coffee and a slice of cake.

So, on the afternoon of Sunday, March 3rd, our hut was turned into a café with menus available on every table demonstrating how to make the different signs for cup of tea, cake, cupcake, biscuit, please and thank you. Cubs, along with a few Beavers and Scouts, were on hand to serve. Even Josh's and Sam's sister, Millie, did her part.

Despite the rainy weather, it was a great turnout - many thanks to everyone who gave it a go. It was a great success and a total of £360 was raised, £260 of which will go to the National Deaf Children Society and £100 will go to Cubs. In addition, members of the county's Scouting Youth Commissioner Team stopped by and were so impressed with Josh and the rest of the Cubs that they were chosen as one of this year's *YouShape* winners, which is awarded to young people who lead and shape their Scouting. 1st Kilworth were joint winners (along with 1st Foxton) in the Helping Others category.

Charles Lauder Jn.

WEATHER LOG

MARCH 2019

Highest temp: 18.9°C on 29th

Lowest temp: 1.1°C on 26th

Air frosts: Nil

Rainfall Total: 65.1 mm (2.56")

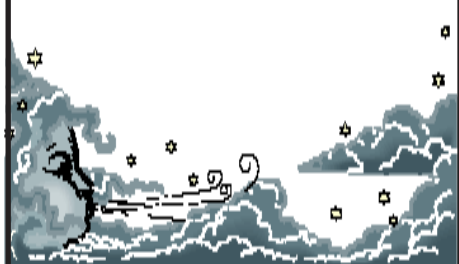
Wettest day: 14.4 mm (0.57") on 6th

Rain days: 17

Snow days: Nil

Total sunshine: 179.4 hours

Brian Smith



HARBOROUGH OPEN STUDIOS

Harborough Artists Cluster is a group of artists active in Market Harborough, neighbouring towns and villages.

This year, over the spring weekend of Saturday May 11th and Sunday 12th, artists working in a range of media from painting, ceramics, mosaics to textiles and jewellery, will be opening their studios to visitors, to view their work and purchase original examples.

This year, as a new member of the group, David Dunmore will be opening his studio at Orchard House, 14 Mowsley Road from 10.00am until 5.00pm on the 11th and 12th, where watercolour landscapes and botanical paintings, prints and cards will be available for purchase.

A map and details of the local studios that are open for this event will be available for those wishing to follow the Artists Trail.



SCHOOL REPORT

HUSBANDS BOSWORTH C. of E. PRIMARY SCHOOL Head Teacher Alan Eathorne

Last month the school received its Statutory Inspection of Anglican and Methodist Schools (SIAMS) Church of England inspection and I am pleased to say we were graded as 'Good'. The staff and local governors are pleased that the report highlights the work we have been doing on our vision and how this is the basis for informing decisions for the school.

The report highlights the strong community and partnerships that we foster and this plays a part in enabling us all to flourish. The report talks about the impact this is having on the children's lives with regard to how the children conduct themselves, that they are able to express their own views and they 'behave well'.

Under this new inspection framework three areas have been identified as areas for the school to develop. We see these areas as the next stages of our development and drive to make this an even better school. Finally, we were very proud that the children stunned our inspector with their mature, caring and knowledgeable outlook - we know they are all brilliant, however it is especially nice when a visitor picks up on this!

The report can be found at: http://www.husbandsbosworth.leics.sch.uk/uploads/2/7/0/0/27002718/husbands_bosworth_siams_report_12.3.19.pdf

Thank you to you, our community, for your continued support.

90's Disco

SATURDAY 8TH JUNE

HUSBANDS BOSWORTH VILLAGE HALL
8:00PM - MIDNIGHT

TICKET COST: £10
INCLUDES ARRIVAL DRINK & NIBBLES

BEST 90's OUTLET RAFFLE

FUNDRAISING DISCO FOR ACTION FOR CHILDREN CHARITY

TICKETS AVAILABLE FROM: SAM BELL AND MARC ROWLEY
FOR MORE INFORMATION CALL MARC ON 01535 880888 OR 07976 163635

Welford Wharf at 50

It's 50 years since the Welford Arm reopened
Join us to celebrate at Welford Wharf
May 18th - 19th 2019

Local Stalls • Canal Crafts
Historic Boats • Pop up Museum
Boat Trips • Historic Tractors
Souvenir Shop
Bands and Drinks at the Wharf Inn

Organised by the Old Union Canals Society

Supported and facilitated by Canal & River Trust canalrivertrust.org.uk

BYGONE BOSWORTH

Images from the Historical Society's Archive Collection

The Bromell Grove development, off Butt Lane nearing completion reminded me of a series of pictures presented a while back to the Historical Society's Archive by former villager, Michael Salter. The pictures show the view from 2, Lammis Close, where Michael lived at the time. This picture shows the garden of number 2 in the foreground, Mr. Bromell's allotment behind the chestnut pailings, then the bridle path with the open fields beyond. The nearest field today is where the five homes on Bromell Grove now stand. The field was once part of Bosworth Estates Lodge Farm, which was farmed by the Bromell family until much of it was requisitioned by the Ministry of War in 1942 to enable the aerodrome to be built.



MIKRON THEATRE

Canal-based Mikron Travelling Theatre are returning to Welford in June with a new show in a nautical theme.

All Hands on Deck is a love story between the Royal Navy and their loyal 'Jenny Wrens'.

Two new WRNS recruits, Lily and Ginger, are keen to seek out wartime adventure and do their bit for King and country. But where Lily wants to serve on dry land, Ginger is desperate to serve at sea - and the sailors can't believe their luck!

The show pays tribute to all those wartime women who pushed the door of opportunity firmly open. Full of dots, dashes, semaphore and song, the girls find themselves in uncharted waters on a journey they'll never forget.

Make a date for your diaries:

Welford Wharf beer garden, Wednesday, June 5th, 7.30pm.

The Attic Restaurant

"Awesome, Awesome, Awesome. Did I Say Awesome?!"
(Just one of the 181 Excellent/Very Good Attic reviews on Tripadvisor)

Lunch Reservations
Wednesday - Saturday 12noon - 2:15pm
2 courses - £16.50pp
3 courses - £19.95pp

Sunday Lunch
12noon - 2:15pm
2 courses - £16.50pp
3 courses - £19.95pp

Dinner Reservations
Wednesday - Saturday 6:30pm - 9:15pm
A la Carte Menu

Early Pre-Theatre Dining
Available from Tuesday 28th May
Menu Du Jour

Private Hire
Exclusive dining for a special occasion

The Attic Restaurant | Kilworth Springs Golf Club
North Kilworth | Leicestershire | LE17 6HJ
01858 575 555 | reservations@theatticrestaurant.co.uk
www.theatticrestaurant.co.uk

BEGLEY'S
Established 50 Years
GENERAL JOINERY SPECIALISTS

Wooden Windows and Doors
Porches
Conservatories
Carpentry & Building

Free estimates
All items can be viewed at Shearsby Workshop

Tel: 0116 2478755 (day)
01858 880569 (eve)
Email: andybeg@hotmail.co.uk

ACTIVITY GROUPS 2018

All Saints Parochial Church Council

Contact: Diana Jones 880741

Baby-Sitting Circle

Contact: Claire Scott 880295

Badminton Club

Contact: Ralph Horton 880526

Beaver Scout Troop

Contact: Norman Byrd 07973 532678

Bosworth Tots

Contact: bosworthtots@hotmail.co.uk

Conservative Association

Contact: Sue Fisher 880026

Craft Group

Contact: Gail Wilmot 880413

Girlguiding Rainbows & Brownies

Contact: Bonnie Kettell 882148

Historical Society

Contact: Melvyn Forman 880281

1st Kilworth Scouts/Beaver unit

Contact: Charles Lauder Jr. 01162 478430

Lutterworth African Drumming Group

Contact: Ralph Horton 880526

Methodist Church Council

Contact: Rev. A. Murphy 462889

Millennium Woodland Trust

Contact: Jackie Fletcher 880910

Royal British Legion

Contact: Robert Maxwell 880361

South Kilworth Art Club

Contact: Maggie Roberts 01858 682173

Tennis Club

Contact: Jennifer Rogers 880401

Workers Education Association

Contact: Sally Sherratt 571064

ACTIVITY & INTEREST GROUPS

HISTORICAL SOCIETY

The final indoor meeting of the season was the Annual General Meeting. Chairman, Melvyn Forman, outlined the highlights of the programme of meetings and thanked fellow Committee members, officers and members for their support during the year. Jackie Fletcher responded to a plea for volunteers to join the re-elected Committee.

The AGM was followed by a very interesting illustrated talk by Mathew Morris of the University of Leicester, who took us on a journey across the public parks of Leicester and Leicestershire, charting the archaeological finds from Neolithic times to World War II.

The Committee are presently drawing together the strings of the Winter Programme for 2019-2020, which will open on Wednesday, September 4th with a mock trial, staged by our friends from the Leicester Magistrates Association.

CRAFT GROUP

The Craft Group meets on the second Wednesday of each month in the Committee Room of the Village Hall.

The group is a friendly and informal gathering where craft-minded people can pick up new ideas and practise their craft in a relaxed atmosphere, away from the distractions of home life.

For details contact Gail on 880413.

MILLENNIUM WOOD

The next Millennium Wood workparty will be on Saturday, May 18th.

The Community woodland is maintained by a small but dedicated group of volunteers. Our workparties are a great way to 'work-out' in the open air whilst helping to maintain - all you need is a pair of gloves, stout footwear and boundless enthusiasm. All necessary tools will be provided and there are even refreshments at 'half-time'! For more information please call Jackie on 880910.

VILLAGE LUNCH

The next Village Lunch will be on Thursday, May 30th at Kilworth Springs Golf Club. Meet at 12.30pm to eat at 1.00pm.

The Village Lunch is a great place for those new to the area, living alone or recently retired to meet up with old friends and make new friends in a warm and informal atmosphere.

The cost of the 2-course meal, to include tea or coffee and mints is only £10 per person. To book a place or for further details please call Janice on 880668.

ART GROUP

Bosworth Art Group is a small, friendly and informal group of arty-minded souls meeting fortnightly in the Sports Pavilion. Meetings are on a pay-as-you-go basis, and the fee is £2.50 per session to cover room hire.

The group is self-tutored and all mediums and skill levels are welcomed.

The meetings for the month of May are on Tuesday, 7th and Tuesday 21st.

For details call Melvyn on 880281.



VILLAGE HALL BOOKINGS
01858 880426 07766022901
 husbandsbosworthvh@gmail.com
 www.husbandsbosworthvillagehall.co.uk
SPORTS PAVILION ENQUIRIES
Audrey Marlow 880316

THE 5 PRICES CHALLENGE

Mike and Sylvia Price, family members and friends are undertaking the National 3 Peaks Challenge for charity in June climbing the highest peaks in mainland Britain, within a 24 hour period, including travelling! Donations can be made directly to Mike or Sylvia at 3 Highcroft or by BACS to: HSBC 40-32-04 71718142 S Price (reference your donation with your name).



Stanford Hall

Stanford Hall is a beautiful William & Mary house on the banks of the River Avon near Stanford-on-Avon. The house and grounds are open to the public on certain days, and the grounds are open for private events throughout the year.

We have vacancies for House Tour guides, gate staff and Hall door attendants. If you have an interest in history and would like to be part of a small group of like-minded guides, please contact us. All positions will be on a casual basis and training will be given. Please email: accounts@stanfordhall.co.uk Or telephone: Jill on 01788 860250

Sell your home for a fixed fee of £799

- | | |
|--|---|
| ✓ No obligation visit & market valuation | ✓ Negotiation & sales progression |
| ✓ Floorplans, photographs & particulars | ✓ Qualification of buyers |
| ✓ For sale board | ✓ Listing performance reports |
| ✓ Ads on Rightmove & Zoopla | ✓ Monthly market review |
| ✓ Management of all enquiries | ✓ No sale no fee option available |
| ✓ Attending viewings (fee applied) | ✓ Local links with conveyancers, mortgage brokers & removal firms |

Book a no obligation visit & free valuation
 Call Mark on 07982 982 981 or visit www.visum.co.uk/local

Your local agent with a national presence. 30,000 homes let or sold since 2004.
 See website for terms and conditions.

PARISH COUNCIL NEWS

Report of the Annual Parish Council Meeting held on Tuesday, April 2nd 2019.

Present Full Council, 7 members of the public, District Councillor Lesley Bowles and HDC Neighbourhood and Green Spaces Officer Matt Bills.

■Matters relating to the application to build 9 homes off Thedddingworth Road were discussed at length. Concerns were raised over the proximity of the development to the existing farm business.

■Signing issues relating to Green Lane and access were discussed.

■S106 developer funding for work within the Millennium Woodland and other community projects was discussed.

There being no further business the Annual Parish Meeting closed.

Parish Council Meeting

Minutes of the previous meeting were read and approved.

Matters Arising

■No response had been received from villages along the A4304 corridor regarding future plans for the continuation of the 58 bus service. However, Welford Parish Council had reported that their contribution to the 59 bus service was £3494.

■A broken step on the slide in the Play Area was noted but it was agreed that no work was necessary at present. Safety-related work to the Half-Pipe skateboard ramp had been authorised as full replacement is not possible at present.

Neighbourhood Plan

■The Regulation 14 statutory consultation period had now commenced and would end on April 21st. A few comments had been received to date.

■Evidence of the public consultation process was being compiled.

Scout Hut Lease

■Chairman agreed to consult with 1st Kilworth Scouts regarding the progress.

Open Spaces Tree Planting

■A site meeting was arranged to decide what was required and timescales. 300 trees of varying species were on offer and it was proposed to use some to create shading areas on the Playing Field and Play Area.

Any Other Business

■Play Area roundabout has been repaired and rotates freely now. Council noted that the Methodist Chapel was to close and Clerk was asked to write to the Minister indicating Council's interest in the future use of the building for possible community use.

■Council expressed thanks to those who organised the recent village litterpick and those who participated.

■Council authorised the re-painting of the roadside planters.

■Arrangements would be made to dispose of the redundant salt/grit bin on Berridges Lane.

A full copy of the Minutes can be downloaded at: husbandsbosworthpc.org.uk

PARISH OFFICE HOURS

Monday Closed

Tuesday 14:45 – 17:45

Wednesday 08:30 – 10:30

Thursday 15:45 – 17:45

Friday 08:45 – 11:45

Saturday Surgery 10:00 - 12:00 (3rd Saturday of the month ONLY)

Sunday Closed

SID REPORT

Readings from the Speed Indicator Device

Welford Road inbound

Period: 20.03.19 - 27.03.19

Vehicle movements: NO DATA Av./day:

Average speed: mph

Highest recorded speed: mph

Welford Road inbound

Period: 27.03.19 - 03.04.19

Vehicle movements: 9191 Av./day: 1313

Average speed: 29.05mph

Highest recorded speed: 68mph

Kilworth Road inbound

Period: 03.04.19 - 10.04.19

Vehicle movements: 13434 Av./day: 1919

Average speed: 30.08mph

Highest recorded speed: 61mph

Kilworth Road inbound

Period: 10.04.19 - 17.04.19

Vehicle movements: 14491 Av./day: 2070

Average speed: 30.08mph

Highest recorded speed: 57mph

LOCAL OFFICERS

Husbands Bosworth Parish Council:

Councillors

William Fletcher (Chairman)

Melvyn Forman

Susan Fisher

Patricia Hobson

James Shelley

Parish Clerk

Sarah Mason

2a Mowsley Road

H.B. LE17 6LR

Tel: 881109

clerk@husbandsbosworthpc.org.uk

District Councillor

Lesley Bowles

l.bowles@harborough.gov.uk

County Councillor

Blake Pain

Tel: 01858 411021

blake.pain@leics.gov.uk

Member of Parliament

Neil O'Brien

Tel: 0207 2191802

neil.obrien.mp@parliament.uk

N & S A Fisher – Wigston

Spa Lane

Wigston, LE18 3QD

www.fisherswigston.co.uk

Tel. 0116 288 1101



We offer:

New Ford and Used Vehicle Sales

Ford Factory Trained Technicians

All Makes Servicing & M.o.T

FREE Ford Assist – AA Home Start & European Cover on all Ford Servicing

FREE Collection & Delivery Service

MIKE PRICE HEATING

Oil -fired boiler & heating systems
Servicing & Repairs

Ring 0771 4245290 mobile

01858 880902 home

Your local technician - on your doorstep



CHURCH NEWS

All Saints Parish Church, Methodist Chapel & St. Mary's Roman Catholic Church

FROM THE RECTORY

Positively Speaking

Words are powerful things. Words convey messages, impart information. They can be true or false, they can be helpful or not. A word of encouragement given can lift us up and give us heart to carry on. A word of discouragement can make us feel like giving up and walking away. Words can create an impression for good or bad, can draw people to support a cause or drive them away from it. Words are something we all have at our disposal, to use for good or ill, a powerful tool which needs careful handling.

My grandmother reckoned all words should pass three gates before they leave your lips - which are 'is it true?' 'is it kind?' and 'is it necessary?' Only if the answer to all three is yes should the thing be said. A challenge for us all to follow her advice. So guard the words you say, use them for positive ends.

God spoke and creation happened. He sent his son and called him his Living Word. Jesus, as the Living Word tells us what the Father in heaven is like. The thing about words is, they are no good unless they are heard or read. Are our ears tuned to hear the living words of God? How good are we at listening? Do we want to hear? Will the words change us once they are heard?

The Bible is known as the written Living Word - a means by which God speaks to us today, words to be explored and delved into and understanding to be sought. It's not always an easy book to follow, but when the words speak to our hearts it can be life-changing. Words of life. Worth the read. There is a time to speak, a time to be silent, a time to read, a time to listen, a time to seek the truth.

Have a blessed month.

Liz

METHODIST CHAPEL TO CLOSE

Methodist Church members is preparing to close the Welford Road chapel and ministry in Husbands Bosworth. The chapel on has been a place of worship for over a century and so we report this news with great sadness. Over the years, it has been the meeting place for our small Christian fellowship of Methodists, especially the farming families, for whom the 6.30pm services were ideal.

In the 1950s, attendance declined and the doors closed for a while. However, in 1957, Lloyd and Beryl Jones, who had just moved to the village opened the doors again and took on the stewardship, the little chapel becoming their life's vocation, in later years helped by fellow villagers Margaret and John Scurrah. In the last few years, with the failing health of Lloyd and many of the other members, the chapel congregation and the wider Methodist Circuit around Harborough, have sought to find a new way forward.

Practically, the building lacks certain essential facilities and would require significant financial investment and renovation to enable any new community work. The heart of the church must be the worshipping congregation and this is simply not sustainable in its present form. Hence, the trustees have taken the decision to cease worship in Husbands Bosworth. The pastoral care of those members in the village will continue, as will the good relations with the Anglican and Catholic communities in the village, and also the work done by the Methodist Church in the primary school.

There will be one last chance to worship there; and one last chance to celebrate the work and mission of the chapel on Sunday, May 19th at 4.30pm, followed by refreshments in the Village Hall. The Chair of the Methodist District, Reverend Canon Helen Cameron will be the preacher and everyone is invited.

✠CHURCH SERVICES ✠

Hexagon Benefice

- 5 9.30am Communion Mowsley with Shearsby
9.30am Morning Prayer HB
11.00am Communion Thed.
11.00am Morning Prayer B'thorpe
6.00pm Communion Arnesby
- 12 9.30am Morning Prayer Shearsby
9.30am Arnesby Family Worship
11.00am Communion HB
4.00pm B'thorpe
6.00pm Evensong Mowsley
- 19 10.30am United Benefice Communion Service Mowsley
- 22 Wednesday Messy Church HB
- 26 9.30am Communion Shearsby
9.30am Morning Prayer Mowsley
11.00am Communion Arnesby with B'thorpe
4.30pm Promise Keepers HB

Short Communion every Wed. 9.15am HB

Churchwarden:

Diana Jones 880741

Rector:

Liz Bickley 880351

Methodist Church

- 5 Rev Andrew Murphy (Com.)
12 Join with All Saints
19 Rev Canon Helen D. Cameron
CHAPEL CLOSURES

St Mary's Roman Catholic Church

Services every Sunday 8.30am.

Contact:

Robert Constable-Maxwell 880361

Father Owen O'Neil 462359

ALL SAINTS FLOWER ROTA

MAY:

Janice Staples

WOODPECKER TREE SURGERY

All aspects of tree-work undertaken from dismantling large roadside trees to pruning and reshaping small garden trees.

We also offer a stump grinding service.

Professionally qualified and insured.

For free quotation and advice call

Chris on: 01858 434591

www.woodpeckertreesurgery.co.uk

F&W Plumbing & Heating Services Ltd

22 Elmcroft Road, North Kilworth, LE176HX

Bespoke bathroom & kitchen design and installation
All types of wall and floor tiling
Hot and cold water systems
Gas-fired boiler installations and system upgrades
Unvented hot water systems
Gas Safe and Bepec registered

Contact Jason on 07866741261

Email: jayspanner@btinternet.com

www.fandwplumbingandheatingservices.co.uk

Over 30 years experience in designing and installing contemporary and traditional kitchens and bathrooms

Project manage personally with all associated trades for a co-ordinated high quality finish with minimum disruption

DIARY DATES for MAY

Wednesday 1 st	Tennis Club AGM, 6.30pm Pavilion
Thursday 2 nd	District Council elections - Village Hall Polling Station 7.00am - 10.00pm
Monday 6 th	EARLY SPRING BANK HOLIDAY
Tuesday 7 th	Parish Council AGM, 7.30pm followed by Ordinary Meeting, Committee Room, Village Hall
Friday 10 th	Causeway Coffee Morning, 10.00am - 11.30am Pavilion
Saturday 11 th	FOBS Safari Supper, set off from the Watering Hole (Village Hall) at 7.30pm
Sunday 12 th	South Kilworth Riding Club Show, competitions start 9.30am Stanford Hall
Friday 17 th	Mobile Library
Saturday 18 th	Woodland work party, 9.30am - 12.30pm
Saturday 18 th	Parish Council Surgery 10.00am - 12.00pm
Sat. & Sun. 18 th & 19 th	Welford 50 celebrations, from 10.00am, Welford Wharf
Monday 27 th	LATE SPRING BANK HOLIDAY
Thursday 30 th	Village Lunch, 12.30pm Kilworth Springs Golf Club

FORTHCOMING EVENTS

Tuesday June 4 th	Parish Council meeting (Note: NO meeting in July)
Sat. June 8 th	Action for Children 90s charity disco
Sun. June 9 th	South Kilworth Riding Club Show
Fri. June 14 th	Causeway Coffee Morning
Thurs. June 20 th	Sulby Open Gardens
Saturday June 29 th	BOSWORTH FESTIVAL 2019
Saturday August 3 rd	LOROS Coffee Morning
Sun. August 25 th	Horticulture & Craft Show

LOCAL PLANNING NEWS

The following applications have been submitted to Harborough District Council:

- 19/00443/FUL Springfields Supermarkets Ltd. Conversion of one dwelling to form two dwellings, 7 High Street
- 19/00504/REM Erection of 3 detached houses (reserved matters of 17/01400/OUT including access, appearance, landscaping, layout and scale), Land off Broad Lane
- 19/00538/FUL Erection of a first floor side extension, Greenhill, Kilworth Road

Recently determined applications:

- 18/00056/OUT (Approved) Outline application for the erection of 9 dwellings; including a new access and public open space, Land adj Honeypt Farm, Honeypt Lane
- 19/00241/ADV (Approved) Install externally illuminated & non-illuminated signs, 1 externally illuminated hanging sign, 2 non illuminated hoarding signs, 7 floodlights, 1 internally illuminated poster case and 1 lantern, Bell Inn, 2 Kilworth Road

Current applications may be inspected during normal working hours at the Council Offices, The Symington Building, Adam & Eve Street, Market Harborough. Comments concerning planning applications should be addressed to the Development Control Manager.

Planning applications and other aspects of local government can now be viewed on-line at www.harboroughonline.co.uk

MOBILE LIBRARY

NOTE CHANGES TO SERVICE

The Mobile Library calls on the third Friday of each month.

STOPS & TIMES

School, Welford Road:	10.25am - 11.25am
Berridges Lane:	11.30am - 12.10pm
Butt Lane:	12.15pm - 12.50pm

Now lending Talking Books on CD & tape

***** You can now renew on-line or by phone *****

BUGLE.....FREE ADS.

Email: bosworth_bugle@talk21.com

WANTED

Secondhand concrete paving slabs, preferably 2ft x 2ft or 3ft x 2ft. Buyer to collect. Call Melvyn on 880281

**TO ADVERTISE HERE COSTS
JUST £15 PER MONTH**

**THE BUGLE REACHES PLACES OTHER
PUBLICATIONS CAN'T REACH!**

**Call Melvyn on 880281
or email: bosworth_bugle@talk21.com**

STEFAN the HANDYMAN

- Quality woodwork
- Painting
- Tiling
- DIY
- Repairs
- Home maintenance, and lots more...!



Not sure it's a job for Stefan? Just pick up the phone and ask!

01858 881775

StefantheHandyman@outlook.com

Facebook: @StefantheHandyman