

WELFORD AT 50

Over thirty pleasure craft, historic and trading boats, local craft and charity stalls and even a pop-up museum helped hoards of visitors to celebrate the fifty years since 1969, when the Old Union Canals Society and British Waterways reopened the canal arm.

The arm had languished, lost and fore lorn, for over 20 years before the dedicated team breathed life back into it, saving the navigation and reviving the fortunes of wharf area. Our open weekend at the wharf and the festival was a fitting celebration to the dedication and foresight of the volunteers who pushed for the resurrection of an important local facility.



Being in Husbands Bosworth Parish, our parish council has also recently funded a bench, which has been installed alongside Welford Lock to mark the anniversary. Take a walk to the lock and see this outpost of Husbands Bosworth Parish....

Meanwhile the work to upgrade and restore the towpath between Husbands Bosworth tunnel and Honeypot Bridge, and along towards Theddingworth has recently been nominated for a Canal and River Trust award.

The work, which has been carried out by the local canal 'banks men' team led by Mike Dalzell, was nominated for the innovative solutions that the team has had to devise whilst working in the Grand Union Canal linear conservation area.

The team have also had to work with the particular geological, environmental and ecological constraints of the site. The team impressed the CRT hierarchy with the way they solved the varied problems whilst maintaining the habitats for the water voles and other wildlife found in the area.

HOME RUN

After a long 'stand-off', whilst nothing appeared to be happening on the site, work finally seems to have started on the former County Council land, adjacent to the cemetery on Welford Road.

Earmarked by Northants-based developer, Bowbridge Homes, for 32 homes, planning permission was granted in July 2016. Within the approved plans, the developer has agreed to provide 12 'affordable' shared ownership homes and homes for rent, and include a scheme of traffic calming and an extension of the 30mph speed limit.

An archaeological assessment carried out by the Museum of London Archaeology (MOLA) team in the spring of 2018, found nothing of any great significance in a series of geophysical surveys and spot trenching within the site. Since then little has happened at the site.

A CUNNING PLAN?

Our Neighbourhood Plan is set to pass its last stage at parish level and will shortly be presented to Harborough District Council, as the Local Planning Authority (LPA), for their scrutiny.

The LPA will check the validity and workability of our Plan and make sure that all the necessary processes have been carried out and ensure that it complies with their own Local Plan and general planning policies.

After a statutory 6-week consultation period any comments and all documentation will be passed to an independent examiner for final amendment and approval before the Plan returns to the Parish Council for formal acceptance.

A parish referendum will then be called, which will decide, by a simple majority, if the Plan is adopted.

FESTIVE FUN-TIME

Make a date for Bosworth Festival 2019 - Saturday 29th June...

Bosworth Festival in the Park, a whole day of fun for only £5.

Welcome to a grand day out for all the family, with classic and vintage cars and machinery, VW Owners Club meet, children's fun fair, games, militaria and collectibles, live entertainment and a host of trade, charity and craft stalls!

The day bowls along merrily through into the evening, when, from 6.30pm, the fun moves onto the Hall lawn for our famous Music in the Park until 11.00pm, with live entertainment. Bring a picnic, pull up an easy chair and relax at the end of the day to live music.

The gates will be open for stall-holders and setting up from 9.00am, and open to the public from 10.30am.

Make it a date... All-day ticket: Adults £5; Under 16s go free!

BUGLE POSTBAG

From Patricia Hobson, Parish Council Chair

The local elections for both District and Parish Councils took place on 2 May, with Bosworth fielding three candidates for our Parish Council's new 4-year term. Those standing, who were elected unopposed, are: Patricia Hobson (Chair), Bill Fletcher (Deputy Chair) and Melvyn Forman (Councillor). Sue Fisher and James Shelley have now retired, and we thank them for their service.

As our Parish is allowed up to 6 Councillors, the Council has decided to co-opt up to three additional councillors to ensure a good spread of ideas, opinions and expertise in its decision-making. A flyer has already been circulated inviting interest but, if you are still pondering, the Council may still be able to consider your application. No special qualifications are needed - just an interest in representing the needs and concerns of the Parish.

Our Parish Council has many roles: managing the cemetery, the allotments, the play area, the sports pavilion, liaising with District and County Councils on planning applications and community issues, grant support for local organisations and making a Neighbourhood Plan, amongst other things. Further information on what Parish Councils do, and what being a Parish Councillor involves, is available on our website: [husbandsbosworthpc.org.uk/About the Council/Becoming a Parish Councillor](http://husbandsbosworthpc.org.uk/About%20the%20Council/Becoming%20a%20Parish%20Councillor).

If you feel that you can contribute to the future of our community, please e-mail for more information to: clerk@husbandsbosworthpc.org.uk; visit the Parish Office at 2a Mowsley Road or phone 881109.

From Mike Scott, Hunters Close

You may have seen me running and cycling around the area. From June 23rd-30th, I will be undertaking the 7-day 'Monster' Triathlon, starting with a 5km swim in Loch Ness, a 1000km bike ride to London and finishing with a 50km run following the river Thames to Richmond. Donations to Sabre Education can be made directly to: Mike Scott, 15 Hunters Close or via <https://uk.virginmoneygiving.com/ScottShiels>

POLICE FILE

- Damage to vehicle parked in layby on Welford Road
- Burglary to domestic premises, The Orchard, Sibbertoft
- Burglary to premises on Cranmer Lane, North Kilworth
- Damage and attempted entry to vehicle parked in Church Lane, South Kilworth

THE BUGLE TEAM

Editor:

Melvyn Forman
10 Church Lane Tel: 880281
Email: bosworth_bugle@talk21.com
Treasurer & Advertising:

Ralph Horton
18 Highcroft Tel: 880526
Contacts:

Mike & Sylvia Price
3 Highcroft Tel: 880902
Jo Horton
18 Highcroft. Tel: 880526
Frances Smith
10 Butt Lane Tel: 880225
Penny Mattock
9 Fernie Court Tel: 881140
Heather O'Connor
16 Fernie Court Tel: 880165

Postal Subscription & distribution:

Melvyn Forman Tel: 880281
Email: bosworth_bugle@talk21.com

www.husbandsbosworth.info

COPY DEADLINE
15th OF THE MONTH
PRECEDING PUBLICATION

POLICE FILE

IF YOU HAVE INFORMATION ON ANY CRIMINAL ACTIVITY CALL MARKET HARBOROUGH POLICE on 101
Neighbourhood Watch Co-ordinator

Stephen Bilbie
stephenbilbie@btinternet.com
NW Community Scheme No. 2123
Eastern Counties Policing Team
PC 1261 Andy Cooper
PCSO 6569 Peter Willson
PCSO 6008 Laura Bolton
Voicemail Service 0116 2485675
CRIMESTOPPERS
FREEPHONE 0800 555111

The ATTIC Restaurant

"Awesome, Awesome, Awesome. Did I Say Awesome?!"
(Just one of the 181 Excellent/Very Good Attic reviews on Tripadvisor)



Lunch Reservations
Wednesday - Saturday 12noon - 2.15pm
2 courses - £16.50pp
3 courses - £19.95pp

Early Pre-Theatre Dining
Available from Tuesday 28th May
Menu Du Jour

Sunday Lunch
12noon - 2.15pm
2 courses - £16.50pp
3 courses - £19.95pp

Private Hire
Exclusive dining for a special occasion


Dinner Reservations
Wednesday - Saturday 6.30pm - 9.15pm
A la Carte Menu

www.theatticrestaurant.co.uk

The Attic Restaurant | Kilworth Springs Golf Club
North Kilworth | Leicestershire | LE17 6HJ
01858 575 555 | reservations@theatticrestaurant.co.uk

BEGLEY'S
Established 50 Years
GENERAL JOINERY SPECIALISTS

Wooden Windows and Doors
Porches
Conservatories
Carpentry & Building



Free estimates
All items can be viewed at Shearsby Workshop

Tel: **0116 2478755** (day)
01858 880569 (eve)
Email: andybeg@hotmail.co.uk

A JACK THE RIPPER STORY

Jacobite Productions
facebook.com/jacobiteproductions



Jacobite Productions presents
THE WHITECHAPEL MURDERS
An original musical written and directed by
Matthew C. Widdowson & Charlotte Anne Hanson

12TH, 14TH & 15TH JUNE, 7:15PM
Doors open 6:45pm
Turville Memorial Hall, Husbands Bosworth, LE17 6JX

TICKETS:
Advance bookings: £10 (£7 concession)
On the door: £12 (£9 concession)
ticketsource.co.uk/jacobiteproductions
Advisory: 12+ (not suitable for under 8's)

BOSWORTH IN FOCUS

A TASTE OF BOSWORTH

Dark Chocolate Ice Cream

A rich indulgent treat to serve as the summer nights extend and can be served straight from the freezer. Note this ice cream does not form any ice crystals and needs no stirring while freezing

Serves 6

Ingredients

50g caster sugar

4 tablespoons water

175g plain chocolate

3 egg yolks

300ml double cream

Method

Firstly line a 1lb loaf tin with cling film.

Place the sugar and water in a pan and stir over a low heat until the sugar has dissolved. Bring to the boil, then lower the heat and simmer for 2 - 3 minutes. Meanwhile, break the chocolate into small pieces and place into a bowl. Pour the hot sugar syrup onto the chocolate and stir until well blended and the chocolate is smooth. Quickly add the egg yolks and beat until well blended into the chocolate mixture.

Whip the cream until soft peaks form. Gently fold into the chocolate mixture. Pour into the loaf tin and freeze uncovered for several hours until firm. Turn out and serve in slices with fresh raspberries and single cream.

Jackie Kerr

PLANT SALE

Saturday, June 15th, 10.30am - 2.30pm
at The Old House, Honeypot Lane. Home grown cottage garden perennials and annuals. All proceeds to Leicester, Leicestershire and Rutland Dementia Action Alliance. Come for a cuppa, cookie and chat, and buy our wonderful plants!

Questions? Ring Eleanor Murphy 880476

WEATHER LOG

APRIL 2019

Highest temp: 26.9°C on 21st

Lowest temp: -1.8°C on 14th

Air frosts: 5

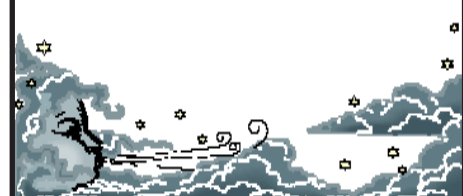
Rainfall Total: 14.7mm (0.58")

Wettest day: 6mm day (0.24") on 2nd

Rain days: 9

Snow days: 0

Total sunshine: 189.1 hours



WILD ABOUT BOSWORTH

Muntjac Deer - *Muntiacus reevesi*

The Muntjac gets its Latin name from the Sudanese 'mencek,' which means 'small deer,' and from John Russell Reeves. Reeves was a plant collector and naturalist who was employed as a tea inspector by the East India Company. Working in south-eastern China during the 19th Century, he spent his spare time collecting specimens and shipping them back to London.

In 1894 he released muntjac deer in Woburn Park, Bedfordshire and it wasn't long before they escaped and began colonising our countryside. Physiologically, they're about the size of a medium-sized dog. Their haunches are larger than their withers; giving them a tail-heavy look. Surprisingly, the males' call resembles the bark of a dog; albeit a dog with a sore throat! Indeed, another name for muntjac is the barking deer. Females and juveniles vocalise using squeaks and squeals.

They live solitary lives and are most active during dawn and dusk; spending the daylight hours lying up and ruminating in some quiet corner. There's one that frequently snoozes the day away in our Millennium Wood. Unhappily, most people only ever see these creatures as sad little bundles by the side of the road. For some reason, muntjac appear ignorant of the dangers of road traffic.

Males sport short, unbranched antlers which they shed around May or June and regrow during the summer. They also have scent glands on their face, which they use to mark their territories. And curiously, for herbivorous creatures, they sport long canine teeth.

Their preferred habitats are forests with a diverse flora where they feed on shrubs and herbs. They're rather fond of bramble and raspberry plants. For good reason, they are shy creatures, as there is no closed season on muntjac hunting!

Mike Chanter



Photo by Nilfanion

SULBY OPEN GARDENS

Don't miss Sulby Gardens' second opening as part of the National Garden Scheme!

The gardens will be open on Thursday, June 20th, 2.00pm to 5.00pm, when we will be highlighting the wildflower meadows in full bloom.

We will be treated to a special visit from Jackie with her beautiful leaf modelled ceramic dishes. As usual we will have plants for sale and our homemade teas will be available. We will also be selling copies of The Story of Sulby Gardens, including chapters on Sulby Hall, the wartime aerodrome and Sulby Polish Resettlement Camp.

Robust footwear recommended. Entry £4 Children free.

Sulby Gardens, Sulby, Northants NN6 6EZ (2 miles south east of Husbands Bosworth)

MIKRON THEATRE

Canal-based Mikron Travelling Theatre are coming to Welford on June 5th with their new show, *All Hands on Deck* - a wartime story of the Royal Navy and their 'Jenny Wrens'.

A show like no other, chock-full of dots, dashes, semaphore, mime, music and song, Mikron takes us on another unforgettable journey into uncharted waters...

Make a date for your diaries:

Welford Wharf beer garden, Wednesday, June 5th, 7.30pm.

MILITARY VEHICLE DRIVING AND TANK BATTLES AT
ARMOURGEDDON
Military Museum
One of the Largest Collections of
WWII Vehicles and Militaria in the Midlands.

Our under cover collection includes post war vehicles, Main Battle Tanks, as well as an excellent selection of other American, German and British vehicles. With interactive displays and lots of things to see. Visit on a game day (Saturday, Sunday or selected Wednesday—April to October) and you will get to see some of our vehicles driving around.

01858 880 239
Chat to us Online
www.armouredgon.co.uk

Office hours Monday to Friday 0900hrs—1700hrs

SCHOOL REPORT

HUSBANDS BOSWORTH C. of E. PRIMARY SCHOOL Head Teacher Alan Eathorne

We are now in the Summer Term and are looking forward to further exciting learning opportunities across the school. Class 1 are learning about space, Class 2 are exploring how plants grow, Class 3 are finding out about life in Roman times and Class 4 are learning more about the impact nature has on our lives. It is also the term where we have a number of whole school events such as sports day and our whole school trip to Wicksteed Park. I wanted to share with you some writing from Class 3. They have been writing diary entries linked to their Roman topic.

'At midnight we were attacked by the Romans. The rumbling of scary feet were coming towards us. A bird squawked to warn us... My brother was fooled along with my three cousins. We were put in shackles and sent to the Roman prison.' Joel

'Today was the worst day of my life... The Romans showed no mercy or fear in their eyes, but we showed fear. They were an incredible sight; strong, fierce and rapidly slashing their swords.' Hugh

FOBS NEWS

FOBS will shortly be sending out clothing collection bags to fill with any items of clothing that you would normally put in a charity bag.

Please start putting stuff aside in preparation for our Bags 2 School fundraising project. Let's recycle our old clothes and help raise money for FOBS. The bags will be collected towards the end of June so you've got plenty of time to have a clear out.



BYGONE BOSWORTH

Images from the Historical Society's Archive Collection

In our front-page article about the recent Welford 50 celebration of the anniversary of the re-opening of the Welford Arm, we note how close to being abandoned the canal was. In this picture, courtesy of Welford & Sulby Historical Society's collection, we can see exactly how seriously close closure was. Commercial carrying to Welford Wharf effectively ceased in about 1947, when the last trader from the wharf, coal-merchant Mary Gilbert, finally hung up her coal shovel. With no passing traffic the waterway soon silted up and the lock fell into disrepair and became impassable.

In the mid 1960s the fledgling Old Unions Canal Society, with local Inland Waterways Association members, keen to promote the new leisure boating activities and eager to get their teeth into a practical conservation project, undertook to try to rescue the arm. They eventually succeeded in persuading British Waterways Board, the navigation authority, into removing the threat of abandonment and undertaking to dredge over 10,000 tons of silt and weed from the 1¼ mile navigation; the Society committing themselves to reinstating the infrastructure and clearing the towing path. Welford was the first major project where a volunteer group and, an albeit reluctant British Waterways, worked together in the restoration of a threatened navigation, paving the way for the saving of many miles of moribund waterways.

As we now know, the scheme was ultimately successful, and in May 1969 the canal to Welford was reopened to similar pomp and ceremony to our recent festivities... and the rest is history, as they say!



Sell your home for a fixed fee of £799

- | | |
|--|---|
| ✓ No obligation visit & market valuation | ✓ Negotiation & sales progression |
| ✓ Floorplans, photographs & particulars | ✓ Qualification of buyers |
| ✓ For sale board | ✓ Listing performance reports |
| ✓ Ads on Rightmove & Zoopla | ✓ Monthly market review |
| ✓ Management of all enquiries | ✓ No sale no fee option available |
| ✓ Attending viewings (fee applies) | ✓ Local links with conveyancers, mortgage brokers & removal firms |

Book a no obligation visit & free valuation
Call Mark on 07982 982 981 or visit www.visum.co.uk/local

Your local agent with a national presence. 30,000 homes let or sold since 2004.
See website for terms and conditions.

F&W Plumbing & Heating Services Ltd

22 Elmcroft Road, North Kilworth, LE176HX

Bespoke bathroom & kitchen design and installation
All types of wall and floor tiling
Hot and cold water systems
Gas-fired boiler installations and system upgrades
Unvented hot water systems
Gas Safe and Bepec registered

Contact Jason on 07866741261

Email: jayspanner@btinternet.com

www.fandwplumbingandheatingservices.co.uk

Over 30 years experience in designing and installing contemporary and traditional kitchens and bathrooms

Project manage personally with all associated trades for a co-ordinated high quality finish with minimum disruption

ACTIVITY GROUPS 2018

All Saints Parochial Church Council

Contact: Diana Jones 880741

Baby-Sitting Circle

Contact: Claire Scott 880295

Badminton Club

Contact: Ralph Horton 880526

Beaver Scout Troop

Contact: Norman Byrd 07973 532678

Bosworth Tots

Contact: bosworthtots@hotmail.co.uk

Conservative Association

Contact: Sue Fisher 880026

Craft Group

Contact: Gail Wilmot 880413

Girlguiding Rainbows & Brownies

Contact: Bonnie Kettell 882148

Historical Society

Contact: Melvyn Forman 880281

1st Kilworth Scouts/Beaver unit

Contact: Charles Lauder Jr. 01162 478430

Lutterworth African Drumming Group

Contact: Ralph Horton 880526

Methodist Church Council

Contact: Rev. A Murphy 462889

Millennium Woodland Trust

Contact: Jackie Fletcher 880910

Royal British Legion

Contact: Robert Maxwell 880361

South Kilworth Art Club

Contact: Maggie Roberts 01858 682173

Tennis Club

Contact: Jennifer Rogers 880401

Workers Education Association

Contact: Sally Sherratt 571064

CRAFT GROUP

The Craft Group meets on the second Wednesday of each month in the Committee Room of the Village Hall. This is a friendly and informal gathering where craft-minded people can pick up new ideas and practise their craft in a relaxed atmosphere away from the distractions of home life.

For details contact Gail on 880413.

VILLAGE HALL BOOKINGS

01858 880426 07766022901

husbandsbosworthvh@gmail.com

www.husbandsbosworthvillagehall.co.uk

SPORTS PAVILION ENQUIRIES

Audrey Marlow 880316

THE 5 PRICES CHALLENGE

Mike and Sylvia Price, family members and a bunch of friends are undertaking the National 3 Peaks Challenge in June, raising funds for three charities close to their hearts.

The Challenge is to climb the highest peaks in mainland Britain; Scafell Pike in England, Ben Nevis in Scotland and Snowdon in Wales, all within a 24 hour period, including travelling between each!

Mike and Sylvia are tackling the Challenge in aid of *The Brain Tumour Charity*, whilst Catherine and Beth are raising funds for *Luna Animal Rescue* and Steve for *Help Musicians UK*. Every penny raised will go to the chosen charities.

Donations can be made directly to Mike or Sylvia at 3 Highcroft or by BACS to: HSBC 40-32-04 71718142 S Price (reference - your name).

ACTIVITY & INTEREST GROUPS

HISTORICAL SOCIETY

Husbands Bosworth Historical Society is an informal and friendly group hosting a season of speakers on the first Wednesday of each month from September through to April in the Sports Pavilion.

Look out for our new programme of meetings, which will kick off on Wednesday, September 2nd when we will be welcoming back local magistrates, Martin Pantling and Graham Peace, who will be conducting a mock trial. New members are assured a warm welcome.

The Historical Society also holds a vast collection of photographs, documents and artefacts of local interest. We are always on the look-out for photos and documents relating to any aspect of the village, village life and villagers - we can copy and return anything that you are happy to share but wish to keep... We can even make digitally 'repaired' copies of damaged photos for you, without damaging the originals!

Call Melvyn on 880281 or email: m.forman@talk21.com

FOREST SCHOOL

Muddy Boots outdoor school aims to bring nature and the natural world to 5-11 year olds, building confidence whilst having fun and learning on the way. We meet at the village's Millennium Wood every Saturday, 2.00pm to 4.00pm, with the exception of Saturday June 29th and Saturday July 20th.

If you would like more information about us please contact Amanda on 07912346299 or email muddybootsoutdoorededucation@yahoo.com. The sessions will run most Saturdays, 2.00pm to 4.00pm. Booking is essential. Visit our Facebook @ muddybootsoutdoorededucationandforestschool.

ART GROUP

Bosworth Art Group is a small, friendly and informal group of arty minded souls meeting on alternate Tuesday mornings, 10.00am to 12.00 in the Sports Pavilion, Kilworth Road. Meetings are on a pay-as-you-go basis, £2.50 per session to cover room hire and coffee.

The group is self tutored and all mediums and skill levels are welcomed.

Interested? Come along and try a session... Art Group dates for June are: Tuesday, 4th and Tuesday 18th.

For details call Melvyn on 880281.

VILLAGE LUNCH

The next Village Lunch will be on Tuesday, June 25th at Kilworth Springs Golf Club, meet at 12.30pm to eat at 1.00pm. The Village Lunch is a great place for those new to the area, recently retired or living alone to meet new friends and catch up with old friends in a warm and friendly atmosphere. The cost of the two course meal to include tea/coffee and mints is only £10 per person. To book a place or for more information please call Janice on 880668.

MILLENNIUM WOOD

The next Millennium Wood work party morning will be on Saturday, June 15th. Why not come down to our community wood for our workout work party? All tools are provided; gloves and appropriate footwear are all you will need. At this time of year tasks include pathway maintenance and scrub clearance.

Refreshments will be served to stalwart workers at 'half time'!

For more information call Jackie on 880910.

LOROS COFFEE MORNING

Date for your diary...

Penny Mattock will be hosting her famous LOROS Coffee Morning again this year, on Saturday, August 3rd at 9 Fernie Court, 10.00 am to 12-30pm.

As usual entrance is free, but a donation is would be much appreciated. There will be a raffle and you can eat as many cakes as you please!

Donations of cakes would be most welcome. Please call Penny on 881140 for more information. Thank you.

MIKE PRICE HEATING

Oil -fired boiler & heating systems
Servicing & Repairs

Ring 0771 4245290 mobile
01858 880902 home

Your local technician - on your doorstep



PARISH COUNCIL NEWS

Report of the Parish Council Annual General Meeting held on Tuesday, May 7th 2019.

Present 4 Council members and 3 members of the public were present.

Election of Officers

Mrs Fisher and Mr Shelly didn't seek re-election.

■ Chair - Mrs Hobson was nominated, agreed to stand and was duly elected.

Mr Fletcher stood down and Mrs Hobson took the chair.

■ Vice-chairman - Mr Fletcher was nominated and duly elected.

■ Representatives on the Sports Field Committee - Mr Forman and Mr Fletcher.

■ Representative on the Bosworth Charities Committee - Mr Forman and Mr Fletcher.

■ Representative on the Village Hall Committee - Mrs Hobson

■ Representative on the Millennium Woodland Trust Committee - Mr Forman.

■ Representative on the Quarry Liaison Group - Mrs Hobson and Mr Forman.

■ Representative on the Pebble Hall Liaison Group - Mr Fletcher and Mr Forman.

■ Volunteer representative for the allotment holders - Mr Forman.

There being no further business the Chair declared the AGM closed.

Report of the Parish Council Meeting held on Tuesday, May 7th 2019.

Present Full Council and three members of the public.

Visitors' Questions

■ A resident brought to Council's attention concerns relating to the recent planning permission granted for conversion to a dwelling of farm buildings adjacent to the Gliding Centre and proposed access across the 'live' runway. Council noted that the application had been approved but that an appeal had been lodged by the Gliding Club. The resident was advised that as the application had been granted, Council had no further influence and that the matter would be assessed by the planning inspector.

Minutes

■ The Minutes of the previous meeting were approved and signed as correct.

Matters Arising

■ Mr Forman informed Council that during a site meeting with a LCC Highways officer the matter of the No Through Road sign that had been erected at the Bell Lane/Green Lane junction was discussed. It was agreed that the sign was inappropriate as the road remained a through route and that a Road Narrows or width restriction sign would be more appropriate. It was noted that another delivery van had got 'stuck' in Green Lane, since the sign had been erected.

■ Clerk noted that the damaged kerb opposite Brook House had been repaired.

Council Co-option Process

■ As there were only three members on the new Council it was agreed to seek interest within the community for co-opted members. The vacancies would be advertised locally. *(Full Council is 6 members.)*

Saturday Surgeries

■ Saturday morning Council surgeries would continue on the third Saturday of each month.

Dag Lane Barriers

■ Mr Forman had met with LCC Highways officer and it was agreed to reduce the length of one of the barriers to enable mobility scooters and pushchairs easier access.

Date and time of next meeting

The next meeting will be on Tuesday, June 4th 2019 at 7.30pm in the Committee Room, Village Hall. PLEASE NOTE: THERE WILL BE NO MEETING IN JULY

A full copy of the Minutes can be downloaded at: husbandsbosworthpc.org.uk

SID REPORT

Readings from the Speed Indicator Device

Kilworth Road outbound

Period: 24.04.19 - 02.05.19

Vehicle movements: 12514 Av./day: 1788

Average speed: 32.83mph

Highest recorded speed: 63mph

Theddingworth Road outbound

Period: 02.05.19 - 09.05.19

Vehicle movements: 12928 Av./day: 1847

Average speed: 26.90mph

Highest recorded speed: 50mph

Theddingworth Road inbound

Period: 09.05.19 - 15.05.19

Vehicle movements: 9663 Av./day: 1380

Average speed: 24.62mph

Highest recorded speed: 39mph

Theddingworth Road inbound

Period: 15.05.19 - 22.05.19

Vehicle movements: 13161 Av./day: 1880

Average speed: 26.81mph

Highest recorded speed: 51mph

LOCAL OFFICERS

Husbands Bosworth Parish Council: Councillors

Patricia Hobson (Chair)

William Fletcher

Melvyn Forman

Parish Clerk

Mrs Sarah Mason

2a Mowsley Road

LE17 6LR

Tel: 881109

clerk@husbandsbosworthpc.org.uk

District Councillor

Amanda Nunn

County Councillor

Blake Pain

Tel: 01858 411021

blake.pain@leics.gov.uk

Member of Parliament

Neil O'Brien

Tel: 0207 2191802

neil.obrien.mp@parliament.uk

PARISH OFFICE HOURS

Monday Closed

Tuesday 14:45 – 17:45

Wednesday 08:30 – 10:30

Thursday 15:45 – 17:45

Friday 08:45 – 11:45

Saturday 10:00 – 12:00 3rd Sat. ONLY

Sunday Closed

WOODPECKER TREE SURGERY

All aspects of tree-work undertaken from dismantling large roadside trees to pruning and reshaping small garden trees.

We also offer a stump grinding service.

Professionally qualified and insured.

For free quotation and advice call

Chris on: 01858 434591

www.woodpeckertreesurgery.co.uk

STEFAN the HANDYMAN

- Quality woodwork
- Painting
- Tiling
- DIY
- Repairs
- Home maintenance, and lots more...

Not sure it's a job for Stefan? Just pick up the phone and ask!

01858 881775

StefantheHandyman@outlook.com

Facebook: @StefantheHandyman



CHURCH NEWS

All Saints Parish Church, Methodist Chapel & St. Mary's Roman Catholic Church

FROM THE RECTORY

This following notice was found in Grimsby Minster and published on Facebook - I must say I agree with it wholeheartedly. The sound of children in church brings us life and hope, joy and lots of fun.

To Those Who Bring Small Children to Church:

There you are at church. Your baby or toddler is restless; perhaps even a little boisterous. You try to silence them, and nothing. You try to pacify them with food or toys, and nothing. Eventually, you resort to the last thing you wanted to do: you pick them up, and before a watching audience, you make the march out of the church. All the while you're a little embarrassed, maybe a little frustrated too. You might even think to yourself, "There's no point in coming to church. I get nothing out of it because I have to constantly care for my kid."

I want you - mothers and/or fathers - to know just how encouraging you are to so many. The elderly woman who often feels alone beams with a smile at the sight of you wrestling with your little one. She's been there before. She knows how hard it can be, but she smiles because to hear that brings back precious memories. Seeing young parents and their small children brighten her day; she may have just received bad news about her health but seeing the vitality of young ones removes - if but for a moment - her fears.

The older man who always seems to be grouchy notices you too. He's always talking about how children in this day have no respect or sense of goodness. But he sees you - a young family - in church every week. Like clockwork, he can depend on the sight of you and your young family. You give him hope that maybe the Church isn't doomed after all, because there are still young parents who love God enough to bring their restless children to church. Bring your children to church! If we don't hear crying, the church is dying. As hard as it might be for you as a parent who's half-asleep, keep on doing what you're doing. You are an encouragement, and you're starting off your children's lives as you should... [Author unknown].

So do bring your children to church when you can and relax! God put the wiggle in children - don't feel you have to suppress it. It is their church too and they are welcome. Remember our Family Service is on the fourth Sunday of each month at 4.30pm, but you are welcome at Holy Communion on the second Sunday at 11.00am too, or at any of the services in the benefice.

Liz

ALL SAINTS FLOWER ROTA

Month: June

Sue Fisher

Call Heather O'Connor on 880165 if you would like to join the Flower Rota

SUMMER OPEN-AIR SERVICES

The Knaptoft season of open-air services in the romantic ruins of St. Nicholas Church, Knaptoft commence on Sunday, June 16th when Rev. Liz Bickley will lead the service and Rev. Chris Oxley, will be the guest preacher. Musical accompaniment will be provided by Fleckney Silver Band.

Services are held within the ruins at 3.00pm on the third Sunday of June, July, August and September.

The ruins and memorial gardens are open for quiet reflection at all times.

METHODIST CHURCH IN BOSWORTH

The Methodist Chapel on Welford Road closed its doors recently, most probably for the last time, after over 100 years of worship.

Methodist ministry continues, church life closes one door and opens another... Husbands Bosworth worshippers are welcomed into the, still lively, Harborough Methodist Circuit.

The future of the building and site is limited and church elders are now considering a number of options to put before the Church Council. A case of: Watch this Space...

✠ CHURCH SERVICES ✠

Hexagon Benefice

- 2 11.00am Communion Thed.
- 8 Messy Church HB
- 9 10.30am Benefice Service Thed.
6.00pm Evensong Mowsley
- 16 10.30am Benefice Communion B'thorpe
3.00pm Knaptoft Ruins Service
- 23 9.30am Family Service Shearsby
11.00am Joint Service Mowsley with B'thorpe
4.30pm Promise Keepers HB
- 29 11.00am Messy Church Shearsby
- 30 10.30am Communion Arnesby

Short Communion every Wed. 9.15am HB

Churchwarden:

Diana Jones 880741

Rector:

Liz Bickley 880351

St Mary's Roman Catholic Church

Services every Sunday 8.30am.

Contact:

Robert Constable-Maxwell 880361
Father Owen O'Neil 462359



**YOUR RURAL
LAND ROVER SERVICE CENTRE**

01858 571122

Old Barn Farm, Welford Road,
Husbands Bosworth, LE17 6JL



Email:

info@foxlandrover.co.uk



www.foxlandrover.co.uk

FLOWERS BY HEATHER

Husbands Bosworth



**Would you like a competitive
Wedding Quote?**

Please call for a free consultation.

Many years of experience.

**Follow or like me on Facebook. Call
on 07773 063063**

DIARY DATES for JUNE

Tuesday 4 th	Art Group, 10.00am - 12.30pm Sports Pavilion
Tuesday 4 th	Parish Council meeting, 7.30pm Committee Room, Village Hall (<i>Note: NO meeting in July</i>)
Saturday 8 th	Action for Children 90s charity disco 8.00pm, Village Hall
Sunday 9 th	South Kilworth Riding Club Show - classes from 9.30am, Stanford Park
Wednesday 12 th	Craft Group 7.30pm Committee Room, Village Hall
Friday 14 th	Causeway Coffee Morning 10.00am - 11.30am, Sports Pavilion
Saturday 15 th	Woodland work-party, 9.30am - 12.30pm
Saturday 15 th	Parish Council Surgery 10-00am -12.00pm, Parish Office
Tuesday 18 th	Art Group 10.00am -12.30pm, Sports Pavilion
Thursday 20 th	Sulby Open Gardens 2.00pm - 5.00pm
Friday 21 st	Mobile library
Saturday 29 th	BOSWORTH FESTIVAL 2019 Gates open 10.00am, Bosworth Hall Park

FORTHCOMING EVENTS

Sunday July 7 th	Historical Society Garden Party
Friday July 12 th	Causeway Coffee Summer Outing
Saturday August 3 rd	LOROS Coffee Morning
Friday August 9 th	Causeway Coffee Morning
Saturday August 17 th	Woodland work-party
Thursday August 22 nd	Sulby Open Gardens
Sunday August 25 th	Horticulture & Craft Show
Thursday August 29 th	Village Lunch

LOCAL PLANNING NEWS

The following applications have been submitted to Harborough District Council:

- 19/00642/TCA | Works to trees (fell) | 41 Berridges Lane
- 19/00489/FUL | Change of use from office space to residential garage | Bosworth House Berridges Lane
- 19/00594/FUL | Erection of a detached dwelling | The Barn 22 Honeypot Lane
- 19/00595/FUL & 19/00625/LBC | Change of use residential institute (C2) to dental surgery (D1) & 2 apartments (C3), demolition of extensions, installation of door for rear access, installation of external staircase to form access to first & second floor apartments, installation of roof lights to the rear & replacement of windows to the rear/side | 27 High Street
- 19/00637/LBC | Internal and external alterations | 32 - 34 Bell Lane Husbands Bosworth
- 19/00720/FUL | Change of roof lights to east elevation | The Old Barns Leicester Road
- 19/00728/FUL | Erect single storey front extension | 10 Welford Road

Current applications may be inspected during normal working hours at the Council Offices, The Symington Building, Adam & Eve Street, Market Harborough. Comments concerning planning applications should be addressed to the Development Control Manager.

Planning applications and other aspects of local government can now be viewed on-line at www.harboroughonline.co.uk

MOBILE LIBRARY

NOTE CHANGES TO SERVICE

The Mobile Library will now be calling on the third Friday of each month.

STOPS & TIMES

School, Welford Road:	10.25am - 11.25am
Berridges Lane:	11.30am - 12.10pm
Butt Lane:	12.15pm - 12.50pm

Now lending Talking Books on CD & tape

***** You can now renew on-line or by phone *****

BUGLE.....FREE ADS.

Email: bosworth_bugle@talk21.com

FOR SALE

Aluminium stacking chairs suitable for patio.

Set of 4 £20. Also 4 fold up black steel patio chairs, with ceramic tiles inset in back. Could do with coat of spray paint. FREE but donation to Marie Curie charity welcome. Bunny 07980834157

FOR SALE

Flymo Ultra Glide mower £30. Water-filled roller - free. Call Ken on 880462

COMPLETE CAR CARE

Accident repair specialist

Bodywork, dent, scratch and stone-chip repair

Servicing, alloy refurbishment, welding

MoT repair

Valeting, full body polish

Parking sensors, tyres & exhausts, etc. fitted

Call Ben on 01858 880404

bencompletencarcare@outlook.com

N & S A Fisher – Wigston

Spa Lane

Wigston, LE18 3QD

www.fisherswigston.co.uk

Tel. 0116 288 1101



We offer:

New Ford and Used Vehicle Sales

Ford Factory Trained Technicians

All Makes Servicing & M.o.T

FREE Ford Assist – AA Home Start & European Cover on all Ford Servicing

FREE Collection & Delivery Service