

# BOSFEST BONANZA

**T**he fine weather and the increasing popularity of the event meant that the BosFest organisers were able to distribute over £8,500 to this year's eight 'headline' charities, LOROS, Heartlink, RNLI, Cancer Research UK, Air Ambulance, the Stroke Association, Young Leicestershire and the British Legion and ten local village charities and good causes.

In all, a total of £8,675 was dished out - up more than £2,500 over last year, and bringing the total raised directly by the event over the years to almost £75,000.

This figure, of course, doesn't take into account the money raised directly by the groups and charities that had stalls at the event.

Much of the success of the event lies with the support and sponsorship that comes from local businesses and the parish council, that covers most of the fixed costs, effectively underwriting the event should it flop or the weather be unkind to us!

Of, course the other, not-so-secret success of Bosfest over the years has been the community spirit and friendship that surrounds the event at all levels... And that's priceless!



## WELFORD FRIENDS

**A**nyone with an interest in the maintenance and preservation of the wharf area at Welford and the Welford Arm of the Grand Union Canal is invited to the inaugural meeting of Friends of the Welford Arm (FOTWA), which will take place on Monday, September 16<sup>th</sup>, at 7.30pm in the Canal Room, The Wharf Inn.

Friends of the Welford Arm is a new group, which has recently been set up to oversee the maintenance and repair of the canal-side areas around the former wharf area at Welford Wharf. Regular work party days will be arranged to carry out works on the former lime kilns and lockside areas, the surrounds to the former warehouse building and general towpath maintenance along the arm of the Grand Union Canal. Those interested are invited to come along to this meeting to establish the group and help formulate a plan of action.

## LUTTERWORTH EAST

**B**usy main cross-country routes, north-south and east-west through Bosworth mean that traffic issues are always in the forefront of the concerns of many of our residents. So, the proposal to build what amounts to virtually a new town to the east of Lutterworth is figuring highly in projections of traffic numbers that will be passing through the local villages.

At a recent meeting of the Welford Action Group (WAG), which monitors and campaigns on traffic issues along the A5199 and A4304, group members voiced their concerns that the new development would increase traffic using these already congested routes to access the A14. Especially worrying is the proposal to include commercial development, with storage, warehousing and employment areas earmarked within the site.

Lutterworth Town Council's own assessment of the impact of the new development suggests that the 2,750 homes alone will add 4,000 cars to the local traffic and their concern is that, with the removal of the promised eastern by-pass, much of the additional traffic serving the commercial areas will be directed through the town.

Whilst the town council is resigned to the development going ahead, they are dismayed that there are few positives for Lutterworth from the plan. They note that there is no by-pass, no additional parking within the town to accommodate the increased traffic and no improvements to medical provision.

The documentation relating to this application runs to almost 200 documents and makes interesting reading! It can be found on the Harborough planning portal at [www.harborough.gov.uk](http://www.harborough.gov.uk), reference 19/00250/OUT.

**Friends of Bosworth School**

## Village Scavenger & Treasure Hunt

*Take a stroll around the village, answering questions, finding items and taking photos. Finish off with a BBQ on the sports field at the Pavilion.*

**Sunday 1st September**  
11am - 4pm

**Bosworth Sports Pavilion**

Trail starts from the Sports Pavilion between 11am-12  
£3 per person or £10 for a family of 4+ (Pay on the door)  
Return to the Pavilion from 12.30pm for  
BBQ ~ Bar ~ Tombola ~ Field Games

**PLEASE BRING A CAMERA OR SMART PHONE TO TAKE PHOTOS**

## BUGLE POSTBAG

### Letter from the Editor

On behalf of the *Bugle* Team I'd like to thank Jackie Kerr, our regular *Taste of Bosworth* contributor, for her support over the past three years. Who could resist Jackie's Malteser Cake or the Lemon Meringue Ice Cream Cake? [Ed. You can see where I'm coming from here, can't you?]

Strangely, Jackie is leaving Bosworth and moving to pastures new, but has promised to send us a few more articles to tickle the Bosworth palette for a little while longer. Jackie's contributions have always added spice to the *Bugle* editorial meetings, and even if you've not actually made a particular recipe, the mere reading of them sets the taste buds up!

We wish Jackie all the best in her new life...

Whilst on the subject of contributors, if any readers have a skill or interest that they think would make either a one-off or regular article for the *Bugle* let us know. Contact details at right.

## POLICE FILE



I attended the August Parish Council meeting to discuss issues relating to the recent break-ins at the allotments and passed on a few ideas about how allotment holders can make them secure.

My first suggestion would be to, if possible, remove valuable tools. I know it may be difficult in the case of things like rotavators, but smaller items could be taken home.

If you can't take things home property marking is a good idea. It acts as a deterrent to thieves and a heads-up for potential buyers, and we might even be able to get your stolen items back to you! There are various products on the market. Type 'property marking' into your internet search engine. If you don't have valuables in your sheds consider leaving them open. This at least stops damage being caused.

There are various types of shed alarms on the market and, while they won't deafen anyone, the shock of a sudden loud noise might well deter them... Sensor lighting and posters that suggest wildlife cameras are in operation may have the same effect.

\*\*\*\*\*

A bit further afield, Swinford has had lead stolen from the church roof. The thieves are active once more in our area, so please keep an eye out for any suspicious activity.

PCSO 6573 Steve Adams

### NEIGHBOURHOOD LINK

Neighbourhood Link is a local policing initiative providing community messaging via a simple email alert system.

Users will get up-to-the-minute messages relating to local criminal activity, policing operations and community safety advice. You can also use the service to contact your local Neighbourhood Policing Team directly, to raise issues relating to your neighbourhood.

The service is simple to use and free to register and receive information. It is secure and confidential, and you can unsubscribe at any time. For more information or to register please go to [www.neighbourhoodlink.co.uk](http://www.neighbourhoodlink.co.uk)

### Bosworth Business Support Virtual Assistant



I am a Virtual Assistant, with over 30 years experience in Executive and Personal Assistant roles operating in South Leicestershire.

Bosworth Business Support offers remote professional Secretarial and Administration assistance when you need it.

Please contact me if you would like to discuss how I can help or if you require further information.

#### Contact Info:

Phone: 0773 445533  
Email: [info@bosworthsupport.com](mailto:info@bosworthsupport.com)  
[www.bosworthsupport.com](http://www.bosworthsupport.com)



#### Business Services include:

- Diary & Inbox Management
- Email Correspondence
- Powerpoint Presentations and Excel Spreadsheets
- Letters, Mail Merge and postage
- Processing Expenses
- Event Co-ordination
- Attending Board Meetings and providing minutes
- Travel Arrangements, Accommodation and Visas
- Holiday Cover

### STEFAN the HANDYMAN

- Quality woodwork
- Painting
- Tiling
- DIY
- Repairs
- Home maintenance, and lots more...!

Not sure it's a job for Stefan? Just pick up the phone and ask!

01858 881775

[StefantheHandyman@outlook.com](mailto:StefantheHandyman@outlook.com)

Facebook: @StefantheHandyman



## THE BUGLE TEAM

### Editor:

Melvyn Forman  
10 Church Lane Tel: 880281  
Email: [bosworth\\_bugle@talk21.com](mailto:bosworth_bugle@talk21.com)

### Treasurer & Advertising:

Ralph Horton  
18 Highcroft Tel: 880526

### Contacts:

Mike & Sylvia Price  
3 Highcroft Tel: 880902

Jo Horton  
18 Highcroft. Tel: 880526

Frances Smith  
10 Butt Lane Tel: 880225

Penny Mattock  
9 Fernie Court Tel: 881140

Heather O'Connor  
16 Fernie Court Tel: 880165

### Postal Subscription & distribution:

Melvyn Forman Tel: 880281  
Email: [bosworth\\_bugle@talk21.com](mailto:bosworth_bugle@talk21.com)

[www.husbandsbosworth.info](http://www.husbandsbosworth.info)

**COPY DEADLINE**  
**15<sup>th</sup> OF THE MONTH**  
**PRECEDING PUBLICATION**

## POLICE FILE

IF YOU HAVE INFORMATION ON ANY  
CRIMINAL ACTIVITY CALL MARKET  
HARBOROUGH POLICE on 101

### Neighbourhood Watch Co-ordinator

Stephen Bilbie  
[stephenbilbie@btinternet.com](mailto:stephenbilbie@btinternet.com)  
NW Community Scheme No. 2123  
Eastern Counties Policing Team

PC 1261 Andy Cooper  
PCSO 6569 Peter Willson  
PCSO 6573 Steve Adams  
PCSO 6008 Laura Bolton  
Voicemail Service 0116 2485675

### CRIMESTOPPERS

FREEPHONE 0800 555111

### ACTION FRAUD

[www.actionfraud.police.uk](http://www.actionfraud.police.uk)  
0300 123 2040



# BOSWORTH IN FOCUS

## A TASTE OF BOSWORTH

### Apricot & Blueberry Crumble Cake

For those who attended Penny's LOROS Coffee morning in August this is the recipe for one of the cakes that was there. Easy to prepare as an all-in-one method and can be served warm as a pudding or cooled and cut into squares. Will keep in the fridge for a couple of days.

#### Ingredients

200g butter, softened  
225g golden caster sugar  
225g self-raising flour  
1 tsp baking powder  
3 eggs, beaten  
2 tablespoons milk  
150g pot vanilla yogurt  
300g apricots - skinned, halved & stoned (or use drained 410g tin instead)  
225 g punnet blueberries

#### For the crumble:

25g butter  
3 heaped tbsp self-raising flour  
3 tablespoons demerara sugar  
1 teaspoon ground cinnamon

#### Method

Grease and line an oblong tin (21cm x 30 cm) with greaseproof paper. Heat oven to 180°C (fan 160°C). Beat butter, sugar, flour, baking powder, eggs and milk together until creamy. Spoon into the tin and level the top. Bake for 25 mins until almost set. Meanwhile prepare the fruit if using fresh apricots by making small nicks in the skin with a sharp knife and then plunge into boiling water. Leave for about 40 secs, drain and cool under the cold tap. The skins should peel away easily. Make the crumble by rubbing all the ingredients together. When the cake has baked for 25 mins remove from oven and working quickly, spoon over the yogurt, scatter over the fruit, then top with the crumble. Return to the oven for 15-20 mins until a skewer comes out clean.

Jackie Kerr

## WILD ABOUT BOSWORTH

### Black Garden Ant - *Lasius niger*

Though fifty kinds of ants live in the UK only six of these are common. The rarer varieties are concentrated in the south as they favour warmer soil temperatures.

The species you are most likely to encounter locally are black or common ants. They're found everywhere: in gardens, under paving and patios, and occasionally, to our annoyance, in our houses.

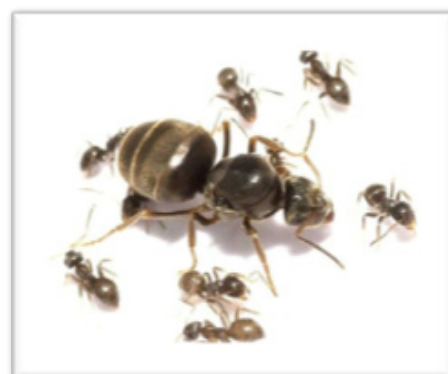
At the centre of every nest lives a queen who spends her life sequestered in a chamber, laying egg after egg. Worker ants care for the eggs by keeping them clean and, after they've hatched into larvae, feeding them a high protein diet comprised mostly of dead insects. These grubs grow and moult three times before weaving a cocoon and pupating. Over two to three weeks they metamorphose and emerge as sterile female adults.

The workers live on sugary energy foods. However, they supply the queen with protein-rich nutrition. In an average colony she'll mother tens of thousands of offspring.

During the summer, when the nest is well established, the queen lays eggs that grow into winged males and females. As soon as the conditions are right, these individuals take to the skies, and mating takes place on the wing. Local colonies synchronise their flights to prevent inbreeding. Their mission accomplished, the males soon die. Meanwhile, the fertilized queens (gynes) seek out soft ground to found a new colony.

The queen's first job is to excavate her new home and seal the entrance. Drawing on energy from the redundant tissue of her wing muscles she lays a small number of eggs. This initial batch of workers, which are tiny compared to later generations, care for the queen, remove the entrance seal and commence foraging. And so, the cycle begins again.

Mike Chanter



### STOOPING TO CONKER...

The Annual Conker and Welly Wanging Championships will be held on the Playing Field from 11.00am on Sunday, October 6<sup>th</sup>. Please come along, meet up with your friends, and enjoy the usual array of entertainment, games, bar and refreshments. This year we will be supporting Harborough Dementia and Canine Partners (who provide assistance dogs for the disabled), as well as helping a number of other worthy village causes.

We would be grateful for any donations of books or tombola prizes. Please call either Ralph 880526 or Sue 881251 who will be happy to arrange collection. Please also contact us if you wish to run a stall to raise funds for your own organisation.

### LOROS COFFEE MORNING

Huge thanks to everyone who came to the LOROS Coffee Morning in August, and grateful thanks to all those who couldn't come but sent a donation.

Even more heartfelt thanks to everyone who helped, all the cake makers, those who served coffees, washed up and sold raffle tickets. The cakes looked, and were, absolutely delicious and more cakes arrived throughout the morning, but were all eaten up by the end of the day!

With donations the total made for LOROS was a fantastic £1100!

A very pretty 'English Rose' plate was left behind after the event. Give Penny a call on 881140 if it is yours...

## N & S A Fisher – Wigston

Spa Lane  
Wigston, LE18 3QD  
www.fisherswigston.co.uk  
Tel. 0116 288 1101



#### We offer:

New Ford and Used Vehicle Sales  
Ford Factory Trained Technicians  
All Makes Servicing & M.o.T  
FREE Ford Assist – AA Home Start & European Cover on all Ford Servicing  
FREE Collection & Delivery Service

## MIKE PRICE HEATING

Oil-fired boiler & heating systems  
Servicing & Repairs

Ring 0771 4245290 mobile  
01858 880902 home

Your local technician - on your doorstep



## SCHOOL REPORT

HUSBANDS BOSWORTH C. of E. PRIMARY SCHOOL Head Teacher Alan Eathorne

Husbands Bosworth Church of England School is part of the Learn At Multi-Academy Trust. We aim to provide a rich and relevant curriculum that allows the children in the school to explore a variety of topic areas with the ambition of turning them into lifelong learners. We also ensure that we help all children to develop their spiritual, social and emotional understanding of themselves and of the world.

Learning together to achieve our dreams is the vision and challenge we set for all our children, families, staff and governors. We aim to provide the children with a curriculum that is engaging and purposeful. We want our pupils to be knowledgeable, well-rounded and confident children who are aware of and make a positive contribution to their community - 'Love your neighbour' (Mathew 22:39).

I have the honour of being the Headteacher and it gives me great pleasure to show people around our wonderful school, which is quite literally positioned at the centre of the village. If you would like to visit then please contact the office on 880212 to arrange a convenient time. By offering an environment that is safe, caring and supportive we provide the conditions for all to flourish, challenging everyone to be the best that they can be: the person God created them to be. This is in keeping with our Trust's core values - learning, and fellowship. Husbands Bosworth C of E Primary School is part of Learn Academies Trust.

*Alan Eathorn (Headteacher)*

## BYGONE BOSWORTH

*Images from the Historical Society's Archive Collection*

This scrap of paper, to be found in the Leicestershire County Records Office, is from the Court Rolls of the Manor Court for Husbands Bosworth, dated 1620. The Manor Courts were the local law makers that drew tithes, oversaw punishments for minor misdeeds, administered tenancies and arbitrated in disputes within their manor.

In 1620 the Rolls for Husbands Bosworth noted that 46 men of the manor had failed to 'shoot according to the Statute' and were fined one penny-three farthings each for their mischief.

The Statute, for the Maintenance and Exercise of Shooting in the Long Bow, was made in 1541, in the reign of Henry VIII, in an attempt to ensure that England was armed and ready for any possible insurgence from the Continent. Every able-bodied man was obliged, by direction of the local constable, to hold a serviceable bow and practice at butts on a regular basis. Evidently the less than enthusiastic men of Bosworth had by 1620 lost the impetus and were duly hauled before their local court and summarily fined. This entry from the Court Rolls detailing the findings of the Court is especially interesting as it lists what probably amounts to the whole of the work-force of Bosworth at that time; an invaluable census of manhood, if you can read it!

A snippet of social history is evident in the listing of one man, Johse Whatt, in that the scribe has annotated him as 'ye bastard'. Whilst such a note at the time would be descriptive rather than derogatory, one can't help wondering if perhaps the unfortunate chap had offended the writer at some time?

It's likely that the butts for Husbands Bosworth were located somewhere near where Butt Lane is today, close to the manor house, so that the Lord of the Manor could keep an eye on proceedings...



**Kilworth Springs**  
PREMIER GOLF CLUB

Clubhouse Bar & Dining open daily from 7:30am

FULLY OPEN TO THE PUBLIC

**Seniors  
Tuesday  
Special**

2 x Main Courses for £12.00\*

add Dessert for £4.00

\*Reduced Menu

*All our food is freshly made with local ingredients*

KILWORTH SPRINGS GOLF CLUB

SOUTH KILWORTH ROAD NORTH KILWORTH LEICESTERSHIRE LE17 6HJ

(T): 01858 575 082 (F): ADMIN@KILWORTHSPRINGS.CO.UK

(W): WWW.KILWORTHSPRINGS.CO.UK

## COMPLETE CAR CARE

**Accident repair specialist**

**Bodywork, dent, scratch and stone-chip repair**

**Servicing, alloy refurbishment, welding**

**MoT repair**

**Valeting, full body polish**

**Parking sensors, tyres & exhausts, etc. fitted**

**Call Ben on 01858 880404**

**[bencompletecarcare@outlook.com](mailto:bencompletecarcare@outlook.com)**

## Sell your home for a fixed fee of £799

- ✓ No obligation visit & market valuation
- ✓ Floorplans, photographs & particulars
- ✓ For sale board
- ✓ Ads on Rightmove & Zoopla
- ✓ Management of all enquiries
- ✓ Attending viewings (fee applies)
- ✓ Negotiation & sales progression
- ✓ Qualification of buyers
- ✓ Listing performance reports
- ✓ Monthly market review
- ✓ No sale no fee option available
- ✓ Local links with conveyancers, mortgage brokers & removal firms

Book a no obligation visit & free valuation

Call Mark on 07982 982 981 or visit [www.visum.co.uk/local](http://www.visum.co.uk/local)

Your local agent with a national presence. 30,000 homes let or sold since 2004.  
See website for terms and conditions.



## ACTIVITY GROUPS

### All Saints Parochial Church Council

Contact: Diana Jones 880741

### Badminton Club

Contact: Ralph Horton 880526

### Beaver Scout Troop

Contact: Norman Byrd 07973 532678

### Bosworth Art Group

Contact: Melvyn Forman 880281

### Bosworth Tots

Contact: bosworthtots@hotmail.co.uk

### Conservative Association

Contact: Sue Fisher 880026

### Craft Group

Contact: Gail Wilmot 880413

### Girlguiding Rainbows & Brownies

Contact: Bonnie Kettell 882148

### Historical Society

Contact: Melvyn Forman 880281

### 1st Kilworth Scouts/Beaver unit

Contact: Charles Lauder Jr. 01162 478430

### Lutterworth African Drumming Group

Contact: Ralph Horton 880526

### Millennium Woodland Trust

Contact: Jackie Fletcher 880910

### Royal British Legion

Contact: Robert Maxwell 880361

### South Kilworth Art Club

Contact: Maggie Roberts 01858 682173

### Tennis Club

Contact: George Walker 880222

### Welford Table Tennis Club

Contact: Ralph Horton 880526

### Workers Education Association

Contact: Sally Sherratt 571064

## WEATHER LOG

### JULY 2019

Highest temp: 38.7°C on 25<sup>th</sup>

Lowest temp: 7.1°C on 3<sup>rd</sup>

Air frosts: 0

Rainfall Total: 136.8mm (5.39")

Wettest day: 64.5mm (2.54") on 28<sup>th</sup>

Rain days: 11

Total sunshine: 158 hours



**YOUR RURAL  
LAND ROVER SERVICE CENTRE**

**01858 571122**

Old Barn Farm, Welford Road,  
Husbands Bosworth, LE17 6JL



Email:

info@foxlandrover.co.uk



www.foxlandrover.co.uk

## ACTIVITY & INTEREST GROUPS

### HISTORICAL SOCIETY

The Historical Society opens its new season of talks in fine style with a Mock Trial led by local Leicester Bench magistrates, Graham Peace and Martin Pantling.

*Has office administrator Jo Green had her fingers in the office petty cash or has she been stitched up by her colleagues? Will her fellow workers back her up or throw her to the lions? You will hear the evidence and the cases for the prosecution and defence... it will be for you to assess the merits of both and come to a verdict. Ms Green's livelihood, future and freedom rest in your hands!*

The meeting is on Wednesday, September 4<sup>th</sup> at 7.30pm at the Sports Pavilion, Kilworth Road, and as this is the first meeting of the year, subscriptions will be taken.

Annual subscription is £12.

\*\*\*\*\*

We've been looking a bit further afield with the subjects for our presentations this year and, as well as taking a peek behind the Berlin Wall, its history and downfall, we will be taken on a trip to Easter Island!

Nearer to home we will be hearing the history of gliding and the present-day activities at the Gliding Centre and following the adventures of aviation pioneer, Amy Johnson.

*Meetings are open to visitors who may be interested in specific meetings - a door charge of £2.50 is requested.*

### BADMINTON CLUB

Husbands Bosworth Badminton Club will resume play at the Village Hall from 8.30pm on Thursday, September 12<sup>th</sup> after the summer break.

New members are always welcome on a 'pay-when-you-play' basis at only £2.50 per session.

Please contact Ralph on 880526 if you need any more information.

### TOT-TIME

Bosworth Tots stay-and-play sessions resume on Thursday, September 5<sup>th</sup>, 9.30am to 11.30am in the Village Hall.

Fees are:

£2.50 for first child

50p for additional tots

£1.50 for babies under 1 year

Go to our Facebook page for details.

### CRAFT GROUP

The Craft Group meets on the second Wednesday of each month in the Committee Room of the Village Hall. This is a friendly and informal gathering for craft-minded people.

For details contact Gail on 880413.

### VILLAGE LUNCH

The next Village Lunch will be on Tuesday September 24<sup>th</sup> at Kilworth Springs Golf Club, meet 12.30pm to eat at 1.00pm.

If you are new to the area, living alone or retired, the Village Lunch is a great way to meet new friends and catch up with old friends in a warm and relaxing atmosphere. The cost of the two-course meal, including tea/coffee and mints is only £10.

To book a place or for more information please call Janice on 880668.

### MILLENNIUM WOOD

The Woodland work party volunteers meet on the third Saturday of every month to carry out maintenance and repair work at the community woodland off Mill Lane. The volunteer days are a great opportunity for a work-out in the countryside, whilst helping to maintain this community facility.

The next work party date is Saturday 21<sup>st</sup>, 9.30am to 12.30pm.

Call Jackie on 880910 for more information.

### CAUSEWAY COFFEE

The next Causeway Coffee Morning will be on Friday, September 13<sup>th</sup>, 10.00am to 11.30am at the Sports Pavilion.

### ART GROUP

Bosworth Art Group is a small, friendly and informal group of arty-minded souls meeting on alternate Tuesday mornings, 10.00am to 12.30pm in the Sports Pavilion, Kilworth Road. Meetings are on a pay-as-you-go basis, £2.50 per session to cover room hire and coffee.

The group is self tutored and all mediums and skill levels are welcomed.

Interested? Come along and try a session...

Art Group resumes on Tuesday, September 24<sup>th</sup>.

For details call Melvyn on 880281.



**EvenFlow**

PLUMBING HEATING GAS

Tel. 07783 651817 / www.evenflowplumbing.co.uk

*All aspects of plumbing and  
heating work undertaken,  
including  
emergency calls*

*Gas Safe Registered (632895)  
Landlord Safety Certification  
available*

*Run by ex-Police Officer*

# PARISH COUNCIL NEWS

## Report of the Parish Council Meeting held on Tuesday, August 6<sup>th</sup> 2019.

*Present: Cllr. Barbara Johnson Chair HDC, District Cllr. Amanda Nunn, PCSO 6573 Steve Adams and full Council.*

### Introduction from Chair of HDC.

■Councillor Barbara Johnson outlined her duties as the new Chair of HDC and spoke about Spectrum the autism charity, her designated charity for her year in office.

### Introduction of District Councillor

■Cllr. Amanda Nunn introduced herself to Council as the new District Councillor representing Bosworth Ward and discussed concerns raised about the continuation of the 58 bus service.

### Visitors' Questions

■PCSO Adams had attended the allotments following the recent spate of break-ins and offered some constructive comments on security. He suggested improvements to security at the access points and improved visibility over the site. He stressed that high value equipment was always going to be vulnerable and urged allotment holders not to keep trimmers, mowers or valuable tools on site.

*Minutes of the previous meeting were read and approved.*

### Matters arising from the Minutes

■No response had been received from the operators of the Bruntingthorpe vehicle storage site and Pebble Hall waste recycling site regarding traffic movements.

■Cllr. Fletcher proposed, and it was agreed, that Council purchase a recycled plastic bench to replace the Tom Lang memorial bench in the churchyard, subject to PCC approval. Cllr. Fletcher agreed to liaise with the PCC over the matter.

■Cllr. Fletcher had arranged for the replacement of the broken slab on the pavilion veranda and broken barge-boarding to be replaced.

### Co-option of Councillors

■Council agreed the nomination of Laura Meredith as Councillor. Laura was duly elected and welcomed onto Council.

### Allotments

■Matters arising from a site meeting prior to the Council meeting were discussed. Items relating to security following the recent break-ins were discussed. Two overgrown plots were identified and Clerk was asked to contact the plot-holders to remind them of their responsibility to control pernicious weeds.

■It was agreed to arrange for the access path alongside the northern side of the site to be trimmed.

### Speed Indicator

■Council agreed a honorarium payment for the data processing work involved.

### Canal adoption

■Cllr. Forman outlined the formation of a Welford-based group, FOTWA (Friends of the Welford Arm) and their proposals to adopt the area around Welford wharf with a view to maintaining and preserving the area. Council agreed to support this group, as the area falls within Husbands Bosworth parish.

■Proposals to adopt the length of canal between Honeypot Bridge and the tunnel eastern portal were discussed and Cllr. Fletcher agreed to progress this project. Cllr. Forman agreed to forward the appropriate paperwork.

### Skate Park

■Council discussed correspondence relating to an injury sustained by a child using the skate park equipment. It was noted that the child was 3 years old and that the equipment is clearly marked for use only by older children. It was noted that a recent RoSPA report had found no outstanding high-risk safety issues. Council agreed to consider revising signage to make it clear that younger children should be adequately supervised.

### Pavilion & Playing Field

■The roadside sign for the pavilion had not been installed although the work had been approved. Clerk was asked to follow this up.

■Problems of dogs on the playing field were discussed and it was agreed to install a larger NO DOGS sign at the lower car park entrance to the field.

### Any other business

■The Clerk was asked to contact Highways concerning the removal of redundant bus stops on Welford Road, the degraded road surface at the Berridges Lane/High Street junction following the recent surface dressing and the loose chippings on the footways.

■Vegetation overhanging footways at a number of locations had been brought to Council's attention. Clerk was asked to contact the occupiers of the properties concerned and point out the problem.

■A request for funding to cover insurance costs for the Bosworth Tots group was approved.

### Next meeting

The next meeting of Husbands Bosworth Parish Council will be on Tuesday, September 3<sup>rd</sup> at 7.30pm in the Committee Room of the Village Hall..

*A full copy of the Minutes can be viewed or downloaded at: [www.husbandsbosworthpc.org.uk](http://www.husbandsbosworthpc.org.uk) or by request to the Parish Clerk.*

## SID REPORT

Readings from the Speed Indicator Device

### High Street easterly

Period: 17.07.19 - 24.07.19

Vehicle movements: 14623 Av./day: 2089

Average speed: 22.85mph

Highest recorded speed: 56mph

### Welford Road inbound

Period: 24.07.19 - 31.07.19

Vehicle movements: 7944 Av./day: 1135

Average speed: 29.15mph

Highest recorded speed: 67mph

### Welford Road inbound

Period: 31.07.19 - 07.08.19

Vehicle movements: 8136 Av./day: 1162

Average speed: 29.08mph

Highest recorded speed: 61mph

### Welford Road outbound

Period: 07.08.19 - 14.08.19

Vehicle movements: 9633 Av./day: 1376

Average speed: 29.27mph

Highest recorded speed: 64mph

## F&W Plumbing & Heating Services Ltd

22 Elmcroft Road, North Kilworth, LE176HX

Bespoke bathroom & kitchen design and installation  
All types of wall and floor tiling  
Hot and cold water systems  
Gas-fired boiler installations and system upgrades  
Unvented hot water systems  
Gas Safe and Bepec registered

Contact Jason on 07866741261

Email: [jayspanner@btinternet.com](mailto:jayspanner@btinternet.com)

[www.fandwplumbingandheatingservices.co.uk](http://www.fandwplumbingandheatingservices.co.uk)

Over 30 years experience in designing and installing contemporary and traditional kitchens and bathrooms

Project manage personally with all associated trades for a co-ordinated high quality finish with minimum disruption

## WOODPECKER

### TREE SURGERY

All aspects of tree-work undertaken from dismantling large roadside trees to pruning and reshaping small garden trees.

We also offer a stump grinding service.

Professionally qualified and insured.

For free quotation and advice call

Chris on: 01858 434591

[www.woodpeckertreesurgery.co.uk](http://www.woodpeckertreesurgery.co.uk)



# CHURCH NEWS

*All Saints Parish Church, Methodist Chapel & St. Mary's Roman Catholic Church*

## FROM THE RECTORY

**Monday 12-2-1**

As I mentioned in last month's *Bugle* we have decided to open All Saints Church for public use on an additional occasion in each week. We have a beautiful ancient building, which has been used by the community down the centuries for prayer and worship and for much of the week it is locked up and inaccessible to you all.

So as well as Sunday services and being open each week on Wednesdays when we have a morning service of holy communion, we have decided to open the church for quiet individual reflection in the stillness of the church on Monday lunchtimes, from 12.00noon until 1.00pm. It will not be a formal service, though there will be spoken prayers for just a few minutes at around 12.30pm, but the church will be open for people to pop in for as long as they have available to them, to sit for a few minutes, to light a candle maybe, to have a cuppa and a breather away from your busy routine - bring your sandwich for lunch if you like! For some of that time we will play some quiet music and some of the time will be for quiet reflection. Some might come because they just want a quiet space for a few minutes. Some might have cares and anxieties that they want to think about in stillness. Some might be seeking to know who God is and are prepared to give God some time for him to reveal himself to them. No-one is going to demand to know why you are there, this is just an opportunity for space and stillness in God's house, to slow ourselves down from the busy-ness.

We might want to pray this prayer by Peter Marshall - *'In the name of Jesus Christ, who was never in a hurry, we pray, O God, that thou wilt slow us down, for we know that we live too fast. With all of eternity before us, make us take time to live - time to get acquainted with thee, time to enjoy thy blessings, and time to know each other.'*

Whatever your reason, do come and pop in for a while - every Monday from September.2<sup>nd</sup> All are welcome.

Liz

## ALL SAINTS FLOWER ROTA

**September:**

*Jean Hutchings*

## KNAPTOFT

There will be a special Harvest Festival Service within the romantic ruins of Knaptoft Church on Sunday, September 15<sup>th</sup>. The service will be led by Pastor Johnny Hutton, minister of Arnesby Baptist Church and musical accompaniment will be provided by Fleckney Silver Band. All are welcome.

## HARMONICS CHOIR

*PLEASE NOTE CHANGE FROM PREVIOUSLY ADVERTISED DATE*

The Harmonics Choir concert will now be on Saturday, September 21<sup>st</sup> at 7.30pm.

This promises to be another enjoyable concert, in aid of much-needed funds for All Saints Church.

Tickets £8 each. accompanied children free. Refreshments included.

Tickets are available from Di Jones or Reverend Liz

## STRIDING OUT FOR THE CHURCH

Over the past 30 years Leicestershire *Ride+Stride* has raised over £1 million towards the upkeep of many of the county's places of worship.

The money is divided half and half between the participating places of worship and the Leicestershire Historic Churches Trust, which awards repair and community facilities' grants to historic churches.

This year *Ride+Stride* is on Saturday, September 14<sup>th</sup>, when around 300 sponsored cyclists, walkers, runners, joggers and horse-riders, will be visiting and sampling the hospitality of the 400 or so churches that will be open for the event. Some churches devise a communal route and enjoy the fellowship and fun of a day out in a group, children and young people included.

For a list of participating churches please go to: [www.lhct.org.uk/ridestride2019](http://www.lhct.org.uk/ridestride2019)

## ✠CHURCH SERVICES ✠

### Hexagon Benefice

1	9.30am Communion Shersby 11.00am Communion Thed. 4.00pm Family Service B'thorpe
8	9.30am Family Service Arnesby 11.00am Holy Communion HB 11.00am Harvest Fest. B'thorpe 6.00pm Evensong Mowsley
15	10.30am Benefice Mowsley 3.00pm Knaptoft Harvest Service
22	9.30am Communion Mowsley 11.00am Joint Service Arnesby 4.30pm Promise Keepers HB
29	10.30am Benefice Service Thed. 6.00pm Harvest Service Shearsby

*Short Communion every Wed. 9.15am HB*

**Churchwarden:**

Diana Jones 880741

**Rector:**

Liz Bickley 880351

## St Mary's Roman Catholic Church

*Services every Sunday 8.30am.*

**Contact:**


Robert Constable-Maxwell 880361  
Father Owen O'Neil 462359

# BEGLEY'S

Established 50 Years

## GENERAL JOINERY SPECIALISTS

Wooden Windows and Doors  
Porches  
Conservatories  
Carpentry & Building



Free estimates  
All items can be viewed at Shearsby Workshop

Tel: 0116 2478755 (day)  
01858 880569 (eve)  
Email: [andybeg@hotmail.co.uk](mailto:andybeg@hotmail.co.uk)

## FLOWERS BY HEATHER Husbands Bosworth



**Would you like a competitive  
Wedding Quote?**

**Please call for a free consultation.**

**Many years of experience.**

**Follow or like me on Facebook. Call  
on 07773 063063**

## DIARY DATES for SEPTEMBER

Sunday 1 <sup>st</sup>	South Kilworth Riding Club Show, from 9.30am Stanford Park
Sunday 1 <sup>st</sup>	FOBS Scavenger Hunt. 11.00am - 4.00pm Sports Pavilion
Tuesday 3 <sup>rd</sup>	Parish Council meeting, 7.30pm Village Hall
Wednesday 4 <sup>th</sup>	Historical Society opening meeting, Mock Trial, 7.30pm Sports Pavilion
Thursday 5 <sup>th</sup>	Bosworth Tots, 9.30am - 11.30am Village Hall
Thursday 12 <sup>th</sup>	Badminton Club play resumes, 8.30pm Village Hall
Friday 13 <sup>th</sup>	Causeway Coffee Morning, 10.00am - 11.30am Sports Pavilion
Saturday 14 <sup>th</sup>	Leicestershire Historic Churches Ride+Stride sponsored ride
Monday 16 <sup>th</sup>	Friends of the Welford Arm inaugural meeting, 7.30pm Canal Room, Wharf Inn, Welford
Thursday 19 <sup>th</sup>	Bosworth Tots, 9.30am - 11.30am, Village Hall
Friday 20 <sup>th</sup>	Mobile library ( <i>See panel below</i> )
Saturday 21 <sup>st</sup>	Woodland work party, 9.30am - 12.30pm
Saturday 21 <sup>st</sup>	Harmonics Choir Concert in Church, 7.30pm
Tuesday 24 <sup>th</sup>	Bosworth Art Group resumes, 10.00am - 12.30pm, Sports Pavilion
Tuesday 24 <sup>th</sup>	Village Lunch, meet 12.30pm, Kilworth Springs Golf Club
Sat. & Sun. 28 <sup>th</sup> /29 <sup>th</sup>	Celebration of Marriage, All Saints Church, Theddingworth

## FORTHCOMING EVENTS

Thursday October 3 <sup>rd</sup>	Bosworth Tots
Wednesday October 2 <sup>nd</sup>	Historical Society meeting
Sun. October 6 <sup>th</sup>	Conker Championships & Welly Wanging
Tuesday October 8 <sup>th</sup>	Bosworth Art Group
Friday October 11 <sup>th</sup>	Causeway Coffee Morning
Saturday October 19 <sup>th</sup>	Woodland work party
Sat. & Sun. Oct. 19 <sup>th</sup> /20 <sup>th</sup>	Welford Historical Society Exhibition
Tuesday October 22 <sup>nd</sup>	Bosworth Art Group
Thursday October 24 <sup>th</sup>	Bosworth Tots
Friday, October 25 <sup>th</sup>	FOBS Wine Tasting Evening
Sat. & Sun, Oct. 26 <sup>th</sup> /27 <sup>th</sup>	Welford Watercolourists Exhibition & Sale of Works
Wednesday, October 30 <sup>th</sup>	Village Lunch

## LOCAL PLANNING NEWS

The following applications have been submitted to Harborough District Council:

- 19/01187/AGR Prior notification - erection of extension of existing agricultural building, Wheler Lodge Farm, Welford Road
- 19/01220/FUL Demolition of conservatory and erect single storey rear extension, 15 Church Lane
- 19/01239/FUL Demolition of light industrial sheds and erect 4 dwellings, Old Barn Farm, Welford Road

Recently determined applications:

- 19/00923/FUL (*Approved*) Erect 2 storey side extn. & single storey rear extn. and formation of new vehicular access, 7 Welford Road
- 19/01032/TPO (*Approved*) Works to tree (HDC TPO 197), 18 Fernie Court
- 19/01083/PCD (*Approved*) Discharge of Conditions (Land Contamination) of 18/00870/FUL, Lavender Lakes Livery, Leicester Road.

Planning applications and other aspects of local government can now be viewed on-line at [www.harboroughonline.co.uk](http://www.harboroughonline.co.uk)

## MOBILE LIBRARY

The Mobile Library calls on the third Friday of each month.

### STOPS & TIMES

School, Welford Road:	10.25am - 11.25am
Berridges Lane:	11.30am - 12.10pm
Butt Lane:	12.15pm - 12.50pm

BUGLE.....FREE ADS.

Email: [bosworth\\_bugle@talk21.com](mailto:bosworth_bugle@talk21.com)

FOR SALE

Advertise items under £100 for FREE

**One of the Largest Collections of**  
**WWII Vehicles and Militaria in the Midlands.**

Our under cover collection includes post war vehicles, Main Battle Tanks, as well as an excellent selection of other American, German and British vehicles. With interactive displays and lots of things to see. Visit on a game day (Saturday, Sunday or selected Wednesday—April to October) and you will get to see some of our vehicles driving around.

01858 880 239      Chat to us Online  
[www.armourgeddon.co.uk](http://www.armourgeddon.co.uk)

Office hours Monday to Friday 0900hrs—1700hrs

*Italian Night*

**Wednesday 25th September**

Join us for a 3 Course Italian Inspired Menu For only £24.95pp