

VEGGIE PLEDGE

Following a number of complaints, the Parish Council has recently been assessing the problem of vegetation overgrowing the public footways around the village.

It has been noted that in some places vegetation overhanging the footways may be presenting a hazard to pedestrians, causing them to walk out nearer to the carriageway or even off the



footway altogether. Whilst acknowledging that the problem has been exacerbated by the recent spell of wet weather those who have hedges and bushes adjacent to any public thoroughfare, especially where highway safety issues may arise are reminded of their responsibility to cut back vegetation to their boundary. The rules also apply to public rights of way in the countryside, where footpaths should be a minimum of one metre and bridleways three metres.

The Council has agreed to publicise the problem initially, and ask residents and landowners to consider if they need to do anything about overhanging vegetation on their property before any further action is taken.



MAKING THE BUGLE BUZZ...

Whilst we have had a little moan here about early-onset Christmas, there is a bit of forward planning that the *Bugle* needs to do, which is to set up our advertising base for next year.

The *Bugle* relies on the goodwill of advertisers and sponsors, which enables us to produce the newsletter and distribute it free within the village. Our 2020 advertising year starts with the February issue and priority will be given to advertisers who block-book for the full year. Advertising space is always limited and prospective advertisers are advised to book early to avoid disappointment. Existing and past advertisers will be notified shortly and offered priority booking at a reduced rate and thereafter, any unsubscribed space will be allocated on a month-by-month basis. Current rates will be sent on request by contacting the Editor (*details on p2*).

BAH HUMBUG...

As we start to compile this issue, at the beginning of November, with almost a twelfth of the year yet to go, it's hard to get into the spirit of the festive season. Still-lightish nights and a few unseasonable mild days don't help...

Recently the BBC's *'One Show'* did one of their walkabouts, judging public opinion on the onset of the festive season and the overwhelming response was dismay that supermarkets would have us believe it starts in August and the general consensus was that Christmas shouldn't be seen or heard before the beginning of December. Which makes it even more galling for magazine and newsletter editors, who have to work a month in advance!

Of course, the real festive issue of your *Bosworth Bugle* will be the next one, due to hit the doorstep around Christmas time, which will be the famous *Festive Bugle*, jam-packed with competitions, jokes and quizzes to amuse and entertain you through to the New Year. However, to show willing, and as a nod to our start to festivities we have stuck a sprig of holly behind our masthead! Bah! Humbug! Indeed...

GOVANNEN

The last few spaces are available for the Govannen concert at the Village Hall on Saturday, January 11th. Tickets, costing £15 each, to include a goodly portion of Samantha Bell's famous meat and potato or cheese pie, are available from Ralph Horton. Please call Ralph on 880526 or email: ralphhorton01@gmail.com if you are interested or need more information.

Note: Ralph is now collecting ticket money from everyone who has already booked.

WILD WAYS

If you've enjoyed reading Mike Chanter's *'Wild about Bosworth'* illustrated series of articles about the natural world to be found on our doorstep, which we've featured in the *Bugle* over the past five years, you may be interested to learn that Mike has recently published a collected edition of these articles.

An ideal stocking filler, the booklets cost £5.00 each and all profits will go to the village's Millennium Wood funds.

Contact Mike Chanter on 881353 or mail@mrc112.plus.com for more information.



BUGLE POSTBAG

From Di Jones, All Saints Churchwarden

Thank you to those who supported the Harmonics Community choir concert. It was a lovely evening, with music to suit everyone. Grateful thanks go especially to those who cleaned, baked and helped on the night. As numbers were small £129 was raised for Church funds. Another thank you to everyone who came to our Harvest Festival. The bring and share lunch following the service was a lovely way to end our Harvest Thanksgiving and the food was excellent!

A big thank you goes to Husbands Bosworth school, Dairy Farm Nursery and the congregation for the fantastic amount of tinned and packet food that was donated. It is now on its way to Lutterworth Foodbank.

From Phil Lawrance, North Kilworth

I attended the recent Remembrance Sunday ceremony at Husbands Bosworth. Although I no longer live in the village, I have been attending this ceremony for over 30 years during which time, unless my memory fails me, the traffic on the main road has been halted by the police at 11.00am. This time that did not happen. I spoke to the policeman in charge to ask him why and he told me that they would only stop the traffic if there was a danger of pedestrians spilling out onto the main road. If the organisers wanted the traffic stopped an application needed to be made six months prior to the event and in this instance that did not happen.

I would be interested to know why no application was made (if that is correct) and if other villagers share my view that traffic being halted for five minutes is an important part of the respect we give our fallen soldiers, sailors and airmen.

Editor's Note: I'm sure Phil's observations will be noted and acted on for next year.

POLICE FILE



Criminals are targeting members of the public with automated calls stating that the recipient has been charged for an Amazon Prime subscription. The calls typically tell the victim a fraudster has used their personal details to sign up for an Amazon Prime subscription and they are instructed to press 1 to cancel the transaction. This connects them to the scammer who poses as an Amazon customer service representative and asks permission to install a computer sharing programme to allow remote access to the victim's computer in order to fix a security flaw to prevent it happening again.

Other variants of the crime involve victims being told they are due a refund for an unauthorised transaction on their Amazon account.

Action Fraud has received over 200 reports from people who have lost money to the scam and a further 300 reports from people who recognised this as a scam.

Action Fraud reminds you to NEVER install any software as a result of a cold call.

THE BUGLE TEAM

Editor:

Melvyn Forman

10 Church Lane

Tel: 880281

Email: bosworth_bugle@talk21.com

Treasurer & Advertising:

Ralph Horton

18 Highcroft

Tel: 880526

Contacts:

Mike & Sylvia Price

3 Highcroft

Tel: 880902

Jo Horton

18 Highcroft.

Tel: 880526

Frances Smith

10 Butt Lane

Tel: 880225

Penny Mattock

9 Fernie Court

Tel: 881140

Heather O'Connor

16 Fernie Court

Tel: 880165

Postal Subscription & distribution:

Melvyn Forman

Tel: 880281

Email: bosworth_bugle@talk21.com

www.husbandsbosworth.info



******NOTE******

COPY DEADLINE

15th January for February Issue



LOCAL POLICING

Eastern Counties Policing Team

PC 1261 Andy Cooper

PCSO 6569 Peter Willson

PCSO 6573 Steve Adams

PCSO 6008 Laura Bolton

Voicemail Service 0116 2485675

CRIMESTOPPERS

FREEPHONE 0800 555111

ACTION FRAUD

www.actionfraud.police.uk

0300 123 2040

NW Community Scheme No. 2123

The ATTIC Restaurant

"Awesome, Awesome, Awesome. Did I Say Awesome?!"
(Just one of the 181 Excellent/Very Good Attic reviews on Tripadvisor)

Lunch Reservations
Wednesday - Saturday 12noon - 2:15pm
2 courses - £16.50pp
3 courses - £19.95pp

Early Pre-Theatre Dining
Available from Tuesday 28th May
Menu Du Jour

Sunday Lunch
12noon - 2:15pm
2 courses - £16.50pp
3 courses - £19.95pp

Private Hire
Exclusive dining for a special occasion

Dinner Reservations
Wednesday - Saturday 6:30pm - 9:15pm
A la Carte Menu

The Attic Restaurant | Kilworth Springs Golf Club
North Kilworth | Leicestershire | LE17 6HJ
01858 575 555 | reservations@theatticrestaurant.co.uk
www.theatticrestaurant.co.uk

YOUR RURAL LAND ROVER SERVICE CENTRE

01858 571122

Old Barn Farm, Welford Road, Husbands Bosworth, LE17 6JL

Email: info@foxlandrover.co.uk

www.foxlandrover.co.uk

EvenFlow
PLUMBING HEATING GAS
Tel. 07783 651817 / www.evenflowplumbing.co.uk

All aspects of plumbing and heating work undertaken, including emergency calls

Gas Safe Registered (632895)

Landlord Safety Certification available

Run by ex-Police Officer

BOSWORTH IN FOCUS

TIP TIMES

Leicestershire County Council recycling and household waste sites will be working to a reduced timetable during the winter months. All sites will still be open 5 days a week, but opening times will be from 9.00am to 4.00pm.

Locally to Husbands Bosworth, the Kibworth and Lutterworth sites will be closed on Tuesdays and Wednesdays and the Market Harborough site will be closed on Thursdays and Fridays. All three local sites will be open on Saturdays and Sundays. The normal summer opening times will kick in at the beginning of April 2020.

For more information go to www.leics.gov.uk/waste

WATERCOLOUR WAYS

Welford Watercolourists would like to thank everyone who came along and supported our Annual Art Exhibition and sale of works at the end of October.

Thanks to your support, and the support of our helpers, we are pleased to announce that we have been able to send £350 to the Alzheimer's Society, our chosen charity this year.

Jennifer Rogers

WEATHER LOG

OCTOBER 2019

Highest temp: 18.5°C on October 1st

Lowest temp: 0°C on October 12th

Air frosts: 1

Rainfall Total: 177.3mm (6.98")*

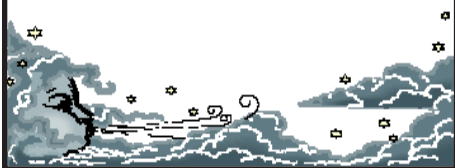
Wettest day: 82.8mm (3.25")

Rain days: 15

Snow: 0

Total sunshine: 143.5 hours

* incomplete data due to gauge failure



WILD ABOUT BOSWORTH

Red-Legged Partridge - *Alectoris rufa*

"On the first day of Christmas my true love sent to me, a partridge in a pear tree."

Strangely, partridges are ground-dwelling birds that rarely perch in trees. An early version of this Christmas favourite was printed in 1780 in a child's book with the delightful title, 'Mirth without Mischief.'

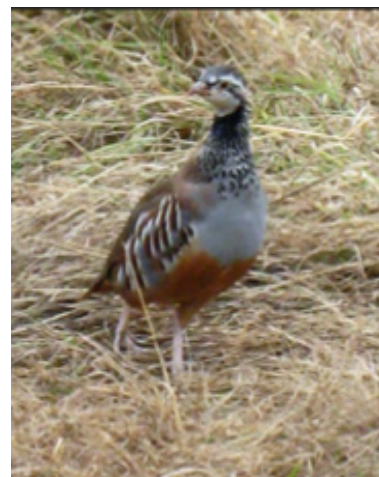
When numbers of resident game birds fell during the reign of Charles I, red-legged partridges were introduced from the continent. Hence, their alternative name 'French Partridge.'

Life's hard for these birds. Of the millions that are released yearly, around half fall to hunters' guns. Many others are taken by foxes and birds of prey. Even so, thousands survive to join the feral population.

Come the breeding season, males build nests on the ground and advertise for mates with a special 'join me' call. Due to their accessibility, when the eggs are laid, they're at risk from a host of creatures: hedgehogs, rats, badgers, corvids, etc. To increase their breeding chances the pair adopt a novel tactic called 'double clutching'. While the female incubates the eggs, the male leaves and builds a second nest. When he's finished, the female switches locations and lays a second clutch, which she raises as a single parent. Meanwhile, the male takes over parental duties at the first nest!

It's been suggested that releasing partridges diverts the attentions of predator species away from our native wild birds. There's another interesting point; huntsmen are complaining that game birds are habitually flying just off the ground when disturbed; making it more difficult to shoot them. It's opined that the possible causes of this behaviour are bad weather or overfeeding. However, natural selection may be having an effect - high-flying birds get shot, leaving the low flyers to raise the next generation...

Mike Chanter



FREELOADING IN HARBOROUGH

Harborough District Council is once again offering free parking all day on Saturdays during December to encourage people to shop in the district to boost the local economy over the Christmas period.

The initiative will run on the same basis as last year, enabling shoppers to park free for up to four hours in short stay car parks and all day in long stay car parks in both Lutterworth and Market Harborough. Drivers will still need to register their stay and can do this in the usual way, with the *Pay by Phone* App or by getting a free ticket from the machine.

Council owned car parks are already free to use after 6.00pm Monday to Saturday and all day on Sunday and Bank Holidays.

WHAT3WORDS?

The emergency services are increasingly turning to a simple location identifying phone app to pin-point specific points when searching for remote and obscure locations. *What3Words* is a smart-phone app that assigns a unique three word every 3m x 3m square on the surface of the globe. The simplicity of the system stems from using three easily remembered dictionary words rather than long strings of co-ordinates. Download the app for free - you may need it one day.

P.S. Find Bugle HQ at: ///skyrocket.repeated.belt

Bosworth Business Support Virtual Assistant



I am a Virtual Assistant, with over 30 years experience in Executive and Personal Assistant roles operating in South Leicestershire.

Bosworth Business Support offers remote professional Secretarial and Administration assistance when you need it.

Please contact me if you would like to discuss how I can help or if you require further information.

Contact Info:

Phone: 0773 4455533

Email: info@bosworthsupport.com
www.bosworthsupport.com



Business Services include:

- Diary & Inbox Management
- Email Correspondence
- Powerpoint Presentations and Excel Spreadsheets
- Letters, Mail Merge and postage
- Processing Expenses
- Event Co-ordination
- Attending Board Meetings and providing minutes
- Travel Arrangements, Accommodation and Visas
- CV Preparation

MIKE PRICE HEATING

Oil -fired boiler & heating systems
Servicing & Repairs

Ring 0771 4245290 mobile
01858 880902 home

Your local technician - on your doorstep



SCHOOL REPORT

HUSBANDS BOSWORTH C. of E. PRIMARY SCHOOL Head Teacher Alan Eathorne

We have had a positive and successful term and after a favourable Ofsted report we have continued to work on our curriculum and the children have been learning about a range of subjects and topics.

Alongside this, our children have been successfully taking part in sporting events such as cross country, sports hall athletics and football. We have also had visits from Waitrose, who have helped the children to think about healthy eating, and from the Fire and Rescue Service and the Police, who gave us advice on staying safe.

I leave you with some fantastic writing from one of our children in Class 3, who has written about Elizabeth I.

'Elizabeth peered desperately at the dancing relatives, trying to work out which partying person would be the best companion for her. She did not have many friends, although she was rich, clever and pretty. Elizabeth's glowing flame red hair outlined her heart shaped face so it was a treat to look at her....' Imogen

FOBS NEWS

Carols in the Playground, Tuesday, December 10th Everyone is welcome to join in!

Safari Supper 2020 date set... Saturday, May 16th



Bosworth Tots is a stay-and-play group for tots from birth to pre-school and their parents, grandparents, carers and child minders. The group usually meets on the first and third Thursday of each month* (see important note below) at Husbands Bosworth Village Hall, 9.45am to 11.45am.

The cost is £2 for one child and then 50p for every additional child and includes craft activities and snacks.

December dates: 5th and 19th

For more information email: bosworthtots@hotmail.co.uk or call 881480

Find us on Facebook: *Bosworth Tots*

***Note that Bosworth Tots will return on Thursday 16th January 2020**



WOODPECKER TREE SURGERY

All aspects of tree-work undertaken from dismantling large roadside trees to pruning and reshaping small garden trees.

We also offer a stump grinding service.

Professionally qualified and insured.

For free quotation and advice call

Chris on: 01858 434591

www.woodpeckertreesurgery.co.uk

The School together with FOBS
Invite you to

CAROLS IN THE PLAYGROUND

Tuesday 10th December
6.00pm–7.00pm
School Playground

Carol Singing, Visit from Santa,
Instrumental Performances
Mulled Wine & Mince Pies
Hot Chocolate & Gingerbread
Carols will take place in the School Hall if raining

BYGONE BOSWORTH

Images from the Historical Society's Archive Collection

With the recent spell of heavy rain and the subsequent widespread flooding we can afford to be more than a little smug in the fact that Bosworth sits firmly on a hill. However, these pictures from the Historical Society's Archive Collection show that we're not immune to travel disruption when the going gets tough...

These pictures were taken in February 1963, looking south along Welford Road, with the allotments and The Firs Farm immediately on the right.

The winter of 1963 was the coldest for more than 200 years, with temperatures so cold that the sea froze in places. With blizzards, snow drifts and temperatures lower than -20 °C, it was the coldest since 1740.

The weeks before had been mild, changeable and stormy, lulling folk into a false sense of security, but on December 22nd 1962 a high pressure system moved to the north-east of the British Isles, dragging bitterly cold winds down across the country. Temperatures remained below freezing for two months and snow lay on the ground until early March when a warm south-westerly airstream finally brought a change. By March 6th the temperature in London was recorded at 17 °C!

The winter of 1947 is often talked about for its extremes, but that winter was dominated by heavy snowfalls rather than particularly low temperatures, with snow falling on 55 days between the end of January and early March, and drifts of over 7 metres reported in places. The thaw, when it came, was sudden and overwhelmed flood defences across the whole country, adding a different misery to those affected.



Sell your home for a fixed fee of £799

- | | |
|--|---|
| ✓ No obligation visit & market valuation | ✓ Negotiation & sales progression |
| ✓ Floorplans, photographs & particulars | ✓ Qualification of buyers |
| ✓ For sale board | ✓ Listing performance reports |
| ✓ Ads on Rightmove & Zoopla | ✓ Monthly market review |
| ✓ Management of all enquiries | ✓ No sale no fee option available |
| ✓ Attending viewings (fee applies) | ✓ Local links with conveyancers, mortgage brokers & removal firms |

Book a no obligation visit & free valuation
Call Mark on 07982 982 981 or visit www.visum.co.uk/local

Your local agent with a national presence. 30,000 homes let or sold since 2004.
See website for terms and conditions.

ACTIVITY GROUPS

All Saints Parochial Church Council

Contact: Diana Jones 880741

Badminton Club

Contact: Ralph Horton 880526

Beaver Scout Troop

Contact: Norman Byrd 07973 532678

Bosworth Art Group

Contact: Melvyn Forman 880281

Bosworth Tots

Contact: bosworthtots@hotmail.co.uk

Conservative Association

Contact: Sue Fisher 880026

Craft Group

Contact: Gail Wilmot 880413

Girlguiding Rainbows & Brownies

Contact: Bonnie Kettell 882148

Historical Society

Contact: Melvyn Forman 880281

1st Kilworth Scouts/Beaver unit

Contact: Charles Lauder Jr. 01162 478430

Lutterworth African Drumming Group

Contact: Ralph Horton 880526

Millennium Woodland Trust

Contact: Jackie Fletcher 880910

Royal British Legion

Contact: Robert Maxwell 880361

South Kilworth Art Club

Contact: Maggie Roberts 01858 682173

Tennis Club

Contact: George Walker 880222

Welford Table Tennis Club

Contact: Ralph Horton 880526

Workers Education Association

Contact: Sally Sherratt 571064

ACTIVITY & INTEREST GROUPS

HISTORICAL SOCIETY

The next meeting of the Historical Society will be our annual Quiz and Social Evening on Wednesday, December 4th, starting at 7.30pm in the Sports Pavilion, when Ralph and Jo, Mike and Beryl will be setting the questions.

As usual we ask you to bring food and nibbles for the 'bring & share' table. Heather is busy preparing her famous Winter Punch but bring along your own drinks if you wish, to loosen up the Little Grey Cells...

Also please bring along your purse for the Prize Raffle, which this year will be in aid of Rainbows children's hospice.

The meeting is open to friends and non-members.

Coming soon...

We start the New Year on Wednesday, January 8th with the return of Roy Smart, who will be recounting the fascinating story of pioneer aviatrix, Amy Johnson.

CRAFT GROUP

The Craft Group meets on the second Wednesday of each month in the Committee Room of the Village Hall. This is a friendly and informal gathering where craft-minded people can pick up new ideas and practise their craft in a relaxed atmosphere away from the distractions of home life.

For details contact Gail on 880413.

ART GROUP

Bosworth Art Group is a small, friendly and informal group of arty-minded souls meeting on alternate Tuesday mornings, 10.00am to 12.30pm in the Sports Pavilion, Kilworth Road. Fees are on a pay-as-you-go basis, £2.50 per session to cover room hire and coffee.

The group is self tutored and all mediums and skill levels are welcomed.

Interested? Come along and try a session...

Art Group dates for December are: Tuesdays, 3rd and 17th.

For details call Melvyn on 880281.

MILLENNIUM WOOD

The last Millennium Wood work party for 2019 at the community woodland off Mill Lane will be on Saturday, December 14th, 9.30am to 12.30pm (*Note change from usual date*).

Volunteers past and present (and future?) are invited to join us for hot mince pies at coffee time!

Call Jackie on 880910 for information about the group and the maintenance work that we carry out.

VILLAGE LUNCH

The Village Lunch Festive Meal will be on Tuesday, December 17th, at Kilworth Springs Golf Club. Meet 12.30pm to dine at 1.00pm. The cost of the meal, including festive trimmings, crackers, mince pies and oodles of Christmas cheer amongst friends will be £12.50 per person.

Please call Janice on 880668 to book a place if you've not already done so.

CAUSEWAY COFFEE

The Causeway Festive Meal will be at The Greyhound, Lutterworth on Friday, December 13th. Bookings for this have been made and those who have booked will be contacted nearer the date.

For more information about the Causeway coffee mornings please call Heather on 880165.

The Causeway Charity administers the age-old Bosworth Charities, and provides for those living alone and retired by hosting regular coffee mornings at the Sports Pavilion.

VILLAGE HALL BOOKINGS

01858 880426 07766022901

husbandsbosworthvh@gmail.com

www.husbandsbosworthvillagehall.co.uk

SPORTS PAVILION ENQUIRIES

Audrey Marlow 880316

WATER WORLD

Foxton Locks Canal Museum is hosting an exhibition and sale of artworks on behalf of the Guild of Waterway Artists over the Christmas and New Year period. Artwork in all media, including oils, acrylics, pastels and watercolour along with prints, cards and posters will be displayed and for sale.

The exhibition continues until January 5th 2020 in the museum, Middle Lock, Foxton. *Visitors to Foxton Locks can see the innermost workings of the locks from January 6th when the whole flight will be drained to enable repairs and replacement of lock gates and maintenance works to be carried out.*

Special open days during the works will allow public access to the lock chambers for a closer look under the waterline! Search 'local canals' for details.

F&W Plumbing & Heating Services Ltd

22 Elmcroft Road, North Kilworth, LE176HX

Bespoke bathroom & kitchen design and installation

All types of wall and floor tiling

Hot and cold water systems

Gas-fired boiler installations and system upgrades

Unvented hot water systems

Gas Safe and Bepec registered

Contact Jason on 07866741261

Email: jayspanner@btinternet.com

www.fandwplumbingandheatingservices.co.uk

Over 30 years experience in designing and installing contemporary and traditional kitchens and bathrooms

Project manage personally with all associated trades for a co-ordinated high quality finish with minimum disruption

COMPLETE CAR CARE

Accident repair specialist

Bodywork, dent, scratch and stone-chip repair

Servicing, alloy refurbishment, welding

MoT repair

Valeting, full body polish

Parking sensors, tyres & exhausts, etc. fitted

Call Ben on 01858 880404

bencompletecarcare@outlook.com

PARISH COUNCIL NEWS

Report of the Parish Council Meeting held on Tuesday, November 5th 2019.

Present: Five Councillors, no members of the public

Minutes

■ Minutes of the previous meeting were read and approved

Matters Arising

■ Cllr. Mr. Fletcher informed Council that the replacement Tom Lang memorial bench had been installed in the churchyard. Cllr. Forman will arrange the removal of the old bench.

■ Cllr. Bolter had carried out and presented a survey of vegetation overgrowing the public footways. It was agreed to highlight the problem with an article in the *Bugle* before any further action was taken.

■ Council asked the Clerk to inform HDC Enforcement team of apparent breaches in conditions relating to the marina site off Station Road, North Kilworth.

■ Council agreed a quotation to carry out safety related repairs to the skatepark.

Community Governance Review

■ Council discussed options for the review presented by HDC and agreed to continuing with the present parish status, name and boundaries. However, Council agreed to request a review of the number of parish councillors, and seek an increase to 8 to reflect the growing population of the parish.

Neighbourhood Plan

■ Cllr. Forman informed Council that the Neighbourhood Plan was now proceeding in the statutory consultation stage, which would end on November 13th.

■ Queries were raised about the on-line response procedure and grant funding, which had been resolved.

■ HDC had forwarded a list of available external examiners and, following consultation with our advisors, *Your Locale*, a suitable examiner was appointed.

Reports

■ Cllr. Mr. Fletcher reported on the official opening of the HB Medical Centre that he and Cllr. Bolter had attended on behalf of Council. Of particular interest was the future-proofing of the site to enable the practice to increase capacity.

■ Cllr. Bolter had attended a recent Campaign to Protect Rural England AGM and reported that the main focus of concern was major road development and threat of subsequent infill around Leicester.

Any Other Business

■ Council discussed a number of issues to raise at the Parish Liaison Meeting. These included poor response to enforcement and lack of district council to parish contact.

■ Cllr. Mr. Fletcher reported that he had been in contact with Canal and River Trust regarding an adoption or sponsorship scheme to include the towpath from Honeypot Bridge to the tunnel northern portal. He was awaiting further clarification.

■ The problem of dogs on the playing field was raised following a spate of recent incidents.

■ The condition of two Council owned bus shelters was discussed and it was agreed to assess the situation in the spring when it was expected some refurbishment would be required.

■ Clerk was asked to obtain quotes for providing a low-level planter for the Bell Lane/Leicester Road junction to replace the one lost some time back.

■ Clerk was asked to contact Highways with regard to the condition of the storm-water gullies throughout the village, and also to contact Tarmac about poor road cleaning on Welford Road.

■ Council agreed to host celebrations at the pavilion to commemorate Victory in Europe Day, VE75, on May Bank Holiday, Friday May 8th.

■ Council discussed previous proposals to plant trees and hedging shrubs, to be donated by National Grid as part of their carbon-offset commitment. As well as gapping-up in the Millennium Wood hedges, stands of trees are proposed as shade for the Play Area, to the side of the Sports Pavilion and within the Playing Field. The work, including planting, will be funded by National Grid.

■ Council briefly discussed options for the future administration of the Sports Pavilion.

Next Meeting: Tuesday, December 3rd at 7.30pm in the Committee Room of the Village Hall.

A full copy of the Minutes can be viewed or downloaded at: www.husbandsbosworthpc.org.uk or by request to the Parish Clerk.

IMPORTANT NOTE: No Parish Council meeting in JANUARY.

SID REPORT

Readings from the Speed Indicator Device

Leicester Road

Period: 24.10.19 - 29.10.19 (5 days)

Vehicle movements: 5233 Av./day: 1046

Average speed: 32.50mph

Highest recorded speed: 54mph

Bell Lane

Period: 31.10.19 - 06.11.19

Vehicle movements: 7226 Av./day: 1204

Average speed: 23.10mph

Highest recorded speed: 36mph

Bell Lane

Period: 07.11.19 - 13.11.19

Vehicle movements: 7358 Av./day: 1226

Average speed: 22.84mph

Highest recorded speed: 38mph

High Street westerly

Period: 13.11.19 - 20.11.19

Vehicle movements: 12865 Av./day: 1838

Average speed: 26.16mph

Highest recorded speed: 57mph

LOCAL OFFICERS

**Husbands Bosworth Parish Council:
Councillors**

Patricia Hobson (*Chair*)

William Fletcher

Melvyn Forman

Jackie Fletcher

Laura Meridith

James Bolter

Parish Clerk

Sarah Mason

2a Mowsley Road

H.B. LE17 6LR Tel: 881109

clerk@husbandsbosworthpc.org.uk

PARISH OFFICE HOURS - DECEMBER

Monday 9.20am - 2.20pm

Tuesday 9.20am - 1.20pm

(Late office on first Tuesday of month 3.00pm - 7.00pm)

Wednesday CLOSED

Thursday 9.20am - 3.20pm

Friday 9.20am - 1.20pm

Saturday No surgery in December

Sunday CLOSED

Holiday Period

Office closes for business 1.20pm on Friday, December 20th.

Reopens 9.20am Thursday January 2nd.

N & S A Fisher – Wigston

Spa Lane

Wigston, LE18 3QD

www.fisherswigston.co.uk

Tel. 0116 288 1101



We offer:

New Ford and Used Vehicle Sales

Ford Factory Trained Technicians

All Makes Servicing & M.o.T

FREE Ford Assist – AA Home Start & European Cover on all Ford Servicing

FREE Collection & Delivery Service

STEFAN the HANDYMAN

- Quality woodwork
- Painting
- Tiling
- DIY
- Repairs
- Home maintenance, and lots more...!

Not sure it's a job for Stefan? Just pick up the phone and ask!

01858 881775

StefantheHandyman@outlook.com

Facebook: @StefantheHandyman



CHURCH NEWS

All Saints Parish Church, Methodist Chapel & St. Mary's Roman Catholic Church

FROM THE RECTORY

I would like to say a big thank you to all those who have come together once again to make the Christmas Tree Festival possible - the committee that organises it, those who decorate trees, the stewards, the caterers, the musicians, the school and to all those who come along to have a look. Thank you to those who have given generously of their time and energy - I hope you find that it sets Christmas off to a good start!

Also, special thanks to those who gave wrapped gifts for distribution by the Salvation Army, for those who have little in the way of gifts at Christmastide.

Everyone's participation makes this a time when the love which is at the heart of Christmas can be celebrated. Thank you one and all.

A special thank you too, to those who have prepared our scarecrow nativity scene - an extra chore at a busy time. Each of the churches in the Hexagon Benefice this year has a scarecrow nativity scene outside their church during Advent, leading up to Christmas, each depicting a different part of the Christmas story. Here at All Saints we have the Angel Gabriel coming to tell Mary that she was going to have a baby. This reminds us of the 'otherness' of the story with the involvement of heavenly beings breaking into our humanity, and the obedience of Mary as she accepts the big request made of such a young girl, that she would bear the shame and difficulties of being a single mum in a time and culture when it really was frowned upon. Sometimes God comes to us in unexpected ways, with extraordinary requests. I pray he comes to you with love and joy this Christmas, and for those who find Christmas a difficult time, I pray you know peace and strength for each day. Happy Christmas.

Liz

Parish Notices

Joseph (Bill) Morton

of Fernie Court

Died November 3rd 2019

Aged 91 years

John Thomasson

of Lammas Close

Died November 15th 2019

Aged 71 years

R.I.P.

CHRISTMAS FESTIVAL

On Saturday, November 30th and Sunday, December 1st All Saints church, Husbands Bosworth will be hosting the annual Christmas Festival.

The theme this year is 'Christmas Songs'. Come and see the sparkling trees and decorations and listen to Christmas music, a raffle and competitions and enjoy delicious home made festive refreshments. Church is open from 10.00am to 5.00pm each day. The weekend will end with an Advent service at 5.00pm on Sunday.

This year we also launch our Scarecrow Nativity Trail. Starting at Husbands Bosworth you can follow the Nativity story in the six churches of the Hexagon benefice, with other scarecrow tableaux and corresponding events, at Theddingworth, Mowsley, Shearsby, Arnesby and Bruntingthorpe throughout December. Details from All Saints and any of the other churches. All proceeds towards Church Funds.

CHURCH FUNDING

All Saints Church members will launch a new campaign to improve their financial situation at the Christmas Festival. Leaflets will be available to explain the scheme, to be followed by the distribution of the full programme, to every household in early February.

Please take time to read the literature and consider how you can help your church. We need you and any help you can offer.

If you are interested in helping please contact either Di Jones Church Warden (880741) or any church member.

✠CHURCH SERVICES ✠

Hexagon Benefice

| | |
|--------------------------------------|--|
| 1 | 9.30am Shearsby 11.00am Communion Thedd. 6.00pm Arnesby |
| 7 | 11.00am Messy Church Arnesby |
| 8 | 9.30am Arnesby 11.00am Communion HB 11.00am Christingle B'thorpe 6.00pm Mowsley |
| 15 | 10.30am Benefice Com. Shearsby 6.00pm Carol Service B'thorpe |
| 17 | 7.00pm Carol Service Mowsley |
| 22 | 11.00am Communion B'thorpe 4.00pm Carol Service Thedd. 5.00pm Carol Service HB 6.00pm Joint Carol Service Arnesby |
| 24 | 2.00pm Crib Service Arnesby 5.00pm Crib Service HB 11.15pm Communion Mowsley |
| 25 | Benefice Communion Arnesby |
| 29 | Benefice Communion HB |
| Short Communion every Wed. 9.15am HB | |

Churchwarden:

Diana Jones 880741

Rector:

Liz Bickley 880351

Curate:

Rev. Angela Tarry

St Mary's Roman Catholic Church

Services every Sunday 8.30am.

Contact:

Robert Constable-Maxwell 880361

Father Owen O'Neil 462359

A BIG THANK YOU...

Everyone at All Saints would like to express their thanks to the Parish Council for their kindness in providing a new seat outside the church. It will be very much appreciated, not only by the parishioners but also villagers and walkers.

The original bench was a gift from Doris Lang in memory of her husband Tom, both very well known villagers. The Council are going to replace the plaque with one dedicated to both of them.

FLOWERS BY HEATHER Husbands Bosworth

Now taking orders for Christmas
flowers and arrangements
Please call for more information

Follow or like me on Facebook.
Call on 07773 063063



Armourgeddon
Military Museum

One of the Largest Collections of
WWII Vehicles and Militaria in the Midlands.

Our under cover collection includes post war vehicles, Main Battle Tanks, as well as an excellent selection of other American, German and British vehicles. With interactive displays and lots of things to see. Visit on a game day (Saturday, Sunday or selected Wednesday—April to October) and you will get to see some of our vehicles driving around.

01858 880 239

Chat to us Online
www.armourgeddon.co.uk

Office hours Monday to Friday 0900hrs—1700hrs

DIARY DATES for DECEMBER

| | |
|-------------------------------------|---|
| Tuesday December 3 rd | Art Group, 10.00am - 12.30pm Sports Pavilion |
| Tuesday December 3 rd | Parish Council meeting, 7.30pm Committee Room, Village Hall |
| Wednesday December 4 th | Historical Society Quiz and Social Evening, 7.30pm Sport Pavilion |
| Thursday December 5 th | Bosworth Tots, 9.30am - 12.30pm Village Hall |
| Thursday December 5 th | Bosworth Belles Wreath-making workshop, 7.00pm Village Hall |
| Tuesday December 10 th | FOBS Carols in the Playground, 6.00pm - 7.00pm School |
| Wednesday December 11 th | Craft Group, 7.30pm Committee Room, Village Hall |
| Friday, December 13 th | Causeway Festive Lunch at The Greyhound, Lutterworth |
| Saturday, December 14 th | Millennium Wood work party 9.30am to 12.30pm (<i>Note change of date</i>) |
| Tuesday December 17 th | Art Group, 10.00am - 12.30pm Sports Pavilion |
| Tuesday December 17 th | Village Lunch Festive Meal, 12.30pm Kilworth Springs Golf Club |
| Thursday December 19 th | Bosworth Tots, 9.30am - 12.30pm Village Hall |
| Friday December 20 th | Mobile library |

FORTHCOMING EVENTS

| | |
|---|-------------------------|
| Sat. January 11 th 2020 | Govannen return! |
| NOTE: No Parish Council meeting in January - Next meeting Tuesday, February 4th | |
| Friday May 8 th 2020 | VE DAY 75 |
| Saturday, May 16 th 2020 | FOBS Safari Supper 2020 |

LOCAL PLANNING NEWS

The following applications have been submitted to Harborough District Council:

■ 19/01686/PCD Discharge of condition 3 (materials) of 18/01276/FUL, Lavender Lakes Livery, Leicester Road

Recently determined applications:

■ 19/00595/FUL (Approved) Change of use, residential institute to dentist surgery and two apartments, 27 High Street

■ 19/00625/LBC (Approved) Internal and external alterations to listed building to facilitate change of use, including demolition of extensions, install rear access, install staircase to side elevation to form access, install roof lights to the rear, replace windows to rear/side, reposition internal staircase, partial demolition and install internal walls, 27 High Street

■ 19/01521/FUL (Approved) Remedial action - remove topsoil from site and replace with clean alternative, 27 High Street

■ 19/01571/TCA (Approved) Works to trees, Oldridge, 60 Bell Lane

Current applications may be inspected during normal working hours at the Council Offices, The Symington Building, Adam & Eve Street, Market Harborough.

Planning applications and other aspects of local government can now be viewed on-line at www.harboroughonline.co.uk

MOBILE LIBRARY

The Mobile Library calls on the third Friday of each month.

STOPS & TIMES

| | |
|-----------------------|-------------------|
| School, Welford Road: | 10.25am - 11.25am |
| Berridges Lane: | 11.30am - 12.10pm |
| Butt Lane: | 12.15pm - 12.50pm |

BUGLE.....FREE ADS

Email: bosworth_bugle@talk21.com

FOR SALE

Sahara Emmelle Unisex mountain bike, purple, Shimano 21 speed, hardly used. Excellent condition. Offers around £75
Avanti 12 Apollo 21" frame gents racing bike, white & purple. Good condition. Offers around £80
 Call 07595 710565 (Husbands Bosworth)



Clubhouse Bar & Dining open daily from 7.30am
 FULLY OPEN TO THE PUBLIC

Seniors Tuesday Special

2 x Main Courses for £12.00*
 add Dessert for £4.00

*Reduced Menu

All our food is freshly made with local ingredients

KILWORTH SPRINGS GOLF CLUB

SOUTH KILWORTH ROAD NORTH KILWORTH LEICESTERSHIRE LE17 6HJ
 (T): 01858 575 082 (F): ADMIN@KILWORTHSPRINGS.CO.UK
 (W): WWW.KILWORTHSPRINGS.CO.UK

BEGLEY'S

Established 50 Years

GENERAL JOINERY SPECIALISTS

Wooden Windows
 and Doors
 Porches
 Conservatories
 Carpentry & Building



Free estimates

All items can be
 viewed at Shearby
 Workshop

Tel: 0116 2478755 (day)

01858 880569 (eve)

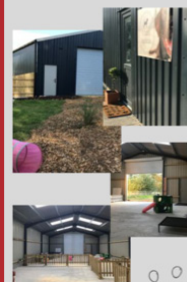
Email: andybeg@hotmail.co.uk



**The Paddocks
 Doggy Daycare**

'Your Dogs Idea Of Heaven'

Large custom built Indoor & Outdoor Doggy Daycare
 Centre, adapted purely for your dogs enjoyment!



* Located in Husbands Bosworth

* Full & Part Time Days Available

Give us a call or drop us a line to
 arrange your visit
 t: 07496 168 034
 e: thepaddocksddc@yahoo.com

[@thepaddocksddc](https://www.facebook.com/thepaddocksddc)
[@thepaddocksddc](https://www.instagram.com/thepaddocksddc)



*Grooming Parlour & Secure Private Field for Hire - *Coming very soon