

A SUMMER OF FUN...

With us now well into 2020, and the dark and depressing days of February upon us, it's probably a good time for the *Bugle* to look forward to this summer's local community events.

Nationally, events are being planned to celebrate the 75th anniversary of the end of World War II, with the special Bank Holiday on Friday, May 8th. Here in Bosworth we will be linking with communities the length and breadth of the country with a beacon-lighting chain to mark the occasion. The parish council will also be hosting a special event alongside the beacon lighting at the Sports Pavilion, with a barbecue and perhaps even another appearance of the famous Bosworth austerity era soup!

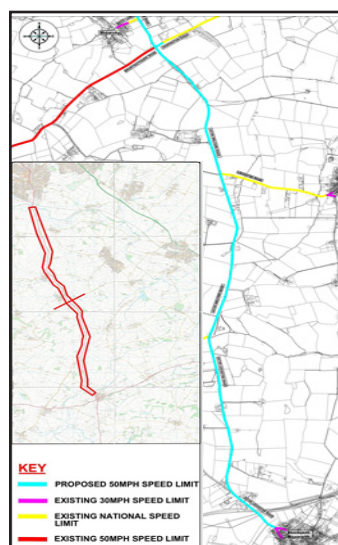


Later in May, over the weekend of May 16th - 17th, the Friends of the Welford Arm canal group will be holding a

re-run of last year's tremendously successful canal festival at Welford Wharf. Along with the return of the heritage and trading narrowboats, canal-themed events and a canal craft marketplace, the weekend will also be hosting steam engines and classic vehicles.

Sitting in its customary slot on the last Saturday of June, June 27th, will be Husbands Bosworth's community festival, BosFest 2020. As usual the festival will be hosting car club events, militaria, live music, displays, memorabilia, trade, craft and charity stalls and all day fun for all the family, extending into the evening with the famous Picnic on the Lawn!

To round up the summer's events, Conkers, the annual conker and welly wanging championships, returns on Sunday, October 4th, once again promising a fun filled day for all the family, with community and charity groups, competitions and stalls alongside the conker and welly-wanging contests.



SPEED BUMP...

Leicestershire County Highways have recently announced plans to reduce the speed limit on the A5199 between Husbands Bosworth and Kilby Bridge. Following an accident rate review of all county roads, the A5199 north of Husbands Bosworth has been identified to have a higher than average number of personal injury accidents. In order to increase highway safety and help to reduce the accident rate, the County Council proposes to reduce the speed limit from 60mph (the national speed limit for this road) to 50mph, to include a short section of Saddington Road at the accident blackspot of Shearsby crossroads.

Any queries about this scheme should be directed to: jane.x.moore@leics.gov.uk or by phone on 0116 305 0001.

BUGLE CALL...

The *Bugle* is run as a not-for-profit community information venture by a bunch of dedicated volunteers and is funded by sponsorship, subscription and advertising. We are always pleased to receive donations, no matter how small, from individuals or groups. If you would like to support the work of the team and help to keep the *Bugle* on the road please contact the Editor, Melvyn Forman on 880281 or email: bosworth_bugle@talk21.com for payment details.



Bosworth tots group
Husbands Bosworth Village Hall

09:30 - 11:30
Thursdays
fortnightly, term time

FROM BIRTH TO PRESCHOOL

CRAFTS

Session Dates 2019-2020

OCT - 3 rd & 24 th	MAR - 5 th & 19 th
NOV - 7 th & 21 st	APR - 2 nd & 30 th
DEC - 5 th & 19 th	MAY - 14 th
JAN - 16 th & 30 th	JUN - 4 th & 18 th
FEB - 13 th	JUL - 3 rd

SHACKS & DRINKS INCLUDED

BABY WEIGH AREA

£2.50 first child
£1.50 babies under 1
50p for siblings

CUPPA & CAKE FOR ADULTS

For More info contact:
BosworthTots@hotmail.co.uk

 **Bosworth Tots**

BUGLE POSTBAG

From Nigel and Sam Hall, Church Street

Sunshine, hailstorm and a rainbow... Thank you everyone for Diane's day on Wednesday, January 25th. To misquote the Lou Reed song: "What a perfect day, we're glad we spent it with you."

POLICE FILE



LOCAL CRIME

Letting the cat out of the bag...

We have recently experienced a spate of catalytic converter thefts across the region. A number of the incidents have occurred in car parks, whilst the driver is shopping and typically take less than 5 minutes. If you see someone acting suspiciously near a vehicle, report it to the police. High clearance vehicles, such as 4x4s and panel vans are especially vulnerable.

Where possible, park in a well-lit parking spot overlooked by residents, and if parking in a public car park try to park in the open.

For further advice email crimeprevention@leics.pnn.police.uk



PCSO Steve Adams

SID REPORT

Welford Road (inbound)

Period: 25.12.19 - 01.01.20

Vehicle movements: 5155 Av./day: 786

Average speed: 28.00mph

Highest recorded speed: 56mph

Welford Road (inbound)

Period: 01.01.20 - 08.01.20

Vehicle movements: 5646 Av./day: 807

Average speed: 27.59mph

Highest recorded speed: 61mph

Kilworth Road (inbound)

Period: 08.01.20 - 15.01.20

Vehicle movements: 11850 Av./day: 1693

Average speed: 33.63mph

Highest recorded speed: 69mph

Kilworth Road (inbound)

Period: 15.01.20 - 22.01.20

Vehicle movements: 10107 Av./day: 1444

Average speed: 35.05mph

Highest recorded speed: 67mph



In an emergency call 999
For non emergencies call 101



THE BUGLE TEAM

Editor:

Melvyn Forman

10 Church Lane

Tel: 880281

Email: bosworth_bugle@talk21.com

Treasurer & Advertising:

Ralph Horton

18 Highcroft

Tel: 880526

Contacts:

Mike & Sylvia Price

3 Highcroft

Tel: 880902

Jo Horton

18 Highcroft.

Tel: 880526

Frances Smith

10 Butt Lane

Tel: 880225

Penny Mattock

9 Fernie Court

Tel: 881140

Heather O'Connor

16 Fernie Court

Tel: 880165

Postal Subscription & distribution:

Melvyn Forman

Tel: 880281

Email: bosworth_bugle@talk21.com

www.husbandsbosworth.info

COPY DEADLINE
15th OF THE MONTH
PRECEDING PUBLICATION

POLICE FILE

IF YOU HAVE INFORMATION ON ANY CRIMINAL ACTIVITY CALL MARKET HARBOROUGH POLICE on 101

Neighbourhood Watch Co-ordinator

Stephen Bilbie

stephenbilbie@btinternet.com

NW Community Scheme No. 2123

Eastern Counties Policing Team

PC 1261 Andy Cooper

PCSO 6569 Peter Willson

PCSO 6573 Steve Adams

PCSO 6008 Laura Bolton

Voicemail Service 0116 2485675

CRIMESTOPPERS

FREEPHONE 0800 555111

ACTION FRAUD

www.actionfraud.police.uk

0300 123 2040

F&W Plumbing & Heating Services Ltd

22 Elmcroft Road, North Kilworth, LE176HX

Bespoke bathroom & kitchen design and installation

All types of wall and floor tiling

Hot and cold water systems

Gas-fired boiler installations and system upgrades

Unvented hot water systems

Gas Safe and Bepec registered

Contact Jason on 07866741261

Email: jayspanner@btinternet.com

www.fandwplumbingandheatingservices.co.uk

Over 30 years experience in designing and installing contemporary and traditional kitchens and bathrooms

Project manage personally with all associated trades for a co-ordinated high quality finish with minimum disruption

'JJ's Kiddycare'



OUTSTANDING Ofsted grading

* FREE Pre-school sessions for 2, 3 & 4 year olds

* Full Day Care 0-5yrs

Situated on a farm site between South Kilworth and Welford

* Breakfast and After School clubs. (4-14years)

* Holiday Clubs during all Northants & Leics school breaks

Tel no. 01858 575642

www.jjs-kiddycare.co.uk



BOSWORTH IN FOCUS

WILD ABOUT BOSWORTH

Wood Anemone - Anemone nemorosa

Wood Anemones are a member of the Ranunculaceae (buttercup) genus of plants. The Latin word nemorosa means 'shady', making it an appropriate appellation for this shade-loving wildflower.

They thrive in woodland undergrowth and their attractive flowers, which appear in early spring, add a touch of sparkle to an otherwise dull scene.

They're pollinated by insects, particularly hoverflies, but their primary method of propagation is through spreading of underground rhizomes, though this is not a rapid process. Indeed, it can be as slow as six foot per century. So, a swathe of wood anemones, such as those in our Brickfield Spinney, is a good indication of the wood's antiquity.

Like many early plants of the forest floor, they die back as the canopy develops and monopolises the sunlight; lying dormant until they reawaken in the following spring. One of its colloquial names is 'Smell Fox', due to its pungent smelling leaves. Perhaps the smell serves as a warning to anything planning to dine on this highly poisonous plant. As an aside, have you noticed that spring wildflowers are predominantly yellow and white? There are yellow wood aconites, lesser celandines, primroses, daffodils and white snowdrops & wood anemones. True bluebells and violets are exceptions to the rule. The cause of this phenomenon is much debated and, in my opinion, a convincing theory has yet to be presented.

Mythology has a lot to say about wood anemones. In Greek myth, Anemoi was the god of the winds; hence, the plant is known as the wind flower. Legend has it that when an anemone closes its petals, it's a sign of approaching rain. It's also said that fairies sleep under their flowers. So please, move quietly if you are in the millennium wood after dusk!

Mike Chanter

SCOUTING FOR BOSWORTH

At the end of November last year, 1st Kilworth Scouts went door to door in Husbands Bosworth seeking food donations for the Lutterworth & Villages Foodbank (LVF).

From both the village and 1st Kilworth families we were able to collect a grand total of 248kg of food and personal hygiene products! So much was collected that it filled up the van transporting it all to the foodbank store and the LVF were very pleased with the donation.

To help put 248kg in perspective, the LVF roughly gives out 10kg of food per person for each 3-day emergency food parcel. So you helped provide enough food, on average, to supply 3-day food parcels for at least 25 people. All of the items donated were very much needed and really helped to restock the foodbank's shelves of their most crucial items. In 2018 the LVF provided 13,000 meals to people in need (a 34% increase from 2017). It is sad that one of the richest nations in the world has so many starving people, but it is good to know we were able to come together and help one another. So we thank you very much for your support, and hope we can count on it again in the future.

Charles Lauder Jnr.

CELTIC MAGIC...

A big thank you to everyone who attended and helped out when Govannen entertained us at the Village Hall recently - we hope you all enjoyed yourselves.

This was the group's fifth visit to Bosworth and they provided us with another evening of rip-roaring jigs and reels, together with a few finely sung ballads, which helped us raise just over £700 for Village Hall funds.

The event always proves popular and we have set a provisional date for their return on January 9th next year! A number of people are already on the list but if you wish to register your interest please email Ralph on ralphhorton01@gmail.com. We will confirm that you still wish to attend and collect the £15 per person ticket money during November.

Ralph Horton



APPLE GRAFTING WORKSHOP

Harborough Grafters and Growers Group will be hosting a practical apple grafting workshop on Sunday, February 23rd, 11.00am to 1.00pm, at St. Hughes Church Hall, Granville Street, Market Harborough.

We will discuss the art of grafting, which will be followed by a practical session where participants will be able to graft two heritage apple tree scions to take home. The aim is that over the years, there will be apple trees grown throughout the Harborough area in gardens and growing spaces - a huge virtual orchard! Places are likely to be limited so please book as soon as possible. Cost is £5 per person. Text Judith on 07967152483 or email: maycottagel2@hotmail.com for more information or to book a place.

Judith Egan

SULBY GARDENS

Sulby Gardens openings under the National Gardens Scheme came to a fitting climax with our Apple Event, where a stunning apple display was on offer and we were delighted with excellent visitor numbers, despite the fact that the Friday was plagued by rain.

A huge thank you to all your readers who came, or spread the word. We are delighted to have raised a total of over £4,000 during the year, just over £3000 going to the National Gardens Scheme's cancer, nursing and other allied charities and the balance was divided between the Northamptonshire Wildlife Trust, Canine Partners and PAPAA, the Psoriasis and Psoriatic Arthritis Alliance. We hope to see many more visitors at our openings during 2020, which will be publicised in due course.

Alison Lowe

WEATHER LOG

December 2019

Highest temp: 11.9°C on 2nd

Lowest temp: -2.3°C on 19th

Air frosts: 3

Rainfall Total: 98.1mm (3.86")

Wettest day: 18.0mm (0.71")

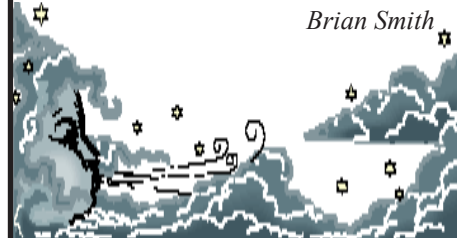
Rain days: 22

Snow: 0

Total sunshine: 201.9 hours

Annual rainfall: 933.3mm (36.74")

Brian Smith



MORE BOSWORTH IN FOCUS

AND THE WINNERS ARE...

Thank you to everyone who entered our Festive edition quiz - we continue to be impressed by your ingenuity.

In a very close run battle, with only four points separating the top five entrants, the honours were shared between Jane and Dave Hall and Sue and Peter Lawrence and friends. Frances and family were third with the Burford and Swales families only one point behind.

Many of you spotted our non-deliberate errors. You've not been awarded extra points for these but have impressed our panel of judges! The 'triangles' and 'elves' questions proved to be particularly frustrating both for our entrants and our compiler.

We would have liked to award prizes to all our entrants but, sadly, Bugle funds will not allow for this and only the top three will qualify. The answers will appear on line at www.husbandsbosworth.info shortly. Thank you once again - if all goes to plan there will be another festive edition next year...

Ralph Horton

BOSWORTH TOTS

Ami Becker, Genna Jones, Katie Williams and Veronica Sanhueza would like to introduce themselves as the new committee steering the Bosworth Tots stay and play group.

"We are a group of local mothers who feel it's important to keep Bosworth Tots running because of the amazing benefits it brings to the families within the community. Since taking over we have made a few changes to the group in order to bring in new children. We held a pottery session with the Paint Pottle paint-your-own pottery studio in November, which was a great success and Hartbeeps musical activity workshop came to our Christmas party.

These changes seem to have been well received and we are in the process of gathering feedback from those who are attending our sessions.

The price of sessions is £2.50 for the first child and 50p for siblings. Tots under 1 year of age are £1.50, and our sessions run from 09.30am to 11.30am, fortnightly on Thursdays at Husbands Bosworth village Hall. (see Bugle Diary dates for details) We offer free refreshments and cake for adults and a light snack and refreshments for children."

LITTER WOMBLES...

If you want to feel inspired and motivated for the new year, and are looking for a new activity to get you out and about, make new friends, and most importantly, make a difference in our local community, then check out the 'South Leicestershire Litter Wombles' Facebook page.

Wombles are already active in Husbands Bosworth, doing their bit when time permits. Don't just talk about the village litter... go out with a friend, neighbour or on a dog walk and pick it up, even if it's just a discarded bag or can. Pick it up, pop it in your bin or arrange for the council to collect your larger treasures! See what you find and put it on the Wombles Facebook page.

It would be amazing if we had more Wombles in the village, so please get involved.

STOP PRESS: 30 glass bottles were recently recovered in and around the Millennium Wood in one Wombling session!

BYGONE BOSWORTH

Images from the Historical Society's Archive Collection

It's always good to receive 'new' images of Bosworth scenes for our Archive Collection. This picture was sent to us recently by Michael Clowes, who is researching his family history. We have a number of images of the High Street, where the old Cherry Tree is evident, but this one was new to us! The 'old' Cherry Tree was demolished and replaced in the late 1930s by the 'modern' Cherry Tree motor pub to cater for the motoring public, with ample car parking at the front.

This picture of Louisa Clowes, Michael's great-grand mother, was probably taken in the mid-1930s. Michael's great-grand father, Thomas, was licensee of the Cherry Tree from 1932 until his death in 1934. Thomas's widow, Louisa, stayed on with their daughter, Jess Shepherd and her husband, who took over the tenancy.

Villager, Aneurin Owen remembers that the old Cherry Tree always looked a dark and dingy place where labourers could pop in early morning for a pint before going to work. The 'new' Cherry Tree was in turn demolished in the 1990s and Cherry Tree Close was built on the site of the building and its gardens.



COMPLETE CAR CARE

Accident repair specialist

Bodywork, dent, scratch and stone-chip repair

Servicing, alloy refurbishment, welding

MoT repair

Valeting, full body polish

Parking sensors, tyres & exhausts, etc. fitted

Call Ben on 01858 880404

bencompletecarcare@outlook.com

ARMOURGEDDON

Military Museum

One of the Largest Collections of

WWII Vehicles and Militaria in the Midlands.

Our under cover collection includes post war vehicles, Main Battle Tanks, as well as an excellent selection of other American, German and British vehicles. With interactive displays and lots of things to see. Visit on a game day (Saturday, Sunday or selected Wednesday—April to October) and you will get to see some of our vehicles driving around.

01858 880 239

Chat to us Online
www.armourgeddon.co.uk

Office hours Monday to Friday 0900hrs—1700hrs

ACTIVITY GROUPS

All Saints Parochial Church Council

Contact: Diana Jones 880741

Badminton Club

Contact: Ralph Horton 880526

Beaver Scout Troop

Contact: Norman Byrd 07973 532678

Bosworth Art Group

Contact: Melvyn Forman 880281

Bosworth Tots

Contact: bosworthtots@hotmail.co.uk

Conservative Association

Contact: Sue Fisher 880026

Craft Group

Contact: Gail Wilmot 880413

Girlguiding Rainbows & Brownies

Contact: Bonnie Kettell 882148

Historical Society

Contact: Melvyn Forman 880281

1st Kilworth Scouts/Beaver unit

Contact: Charles Lauder Jr. 01162 478430

Lutterworth African Drumming Group

Contact: Ralph Horton 880526

Millennium Woodland Trust

Contact: Jackie Fletcher 880910

Royal British Legion

Contact: Robert Maxwell 880361

South Kilworth Art Club

Contact: Maggie Roberts 01858 682173

Tennis Club

Contact: George Walker 880222

Welford Table Tennis Club

Contact: Ralph Horton 880526

Workers Education Association

Contact: Sally Sherratt 571064

VILLAGE LUNCH

The next Village Lunch will be on Thursday, February 27th at Kilworth Springs Golf Club, meeting at 12.30pm to dine at 1.00pm.

The Village Lunch is a great place for those new to the village, retired or living alone to meet new friends and catch up with old friends in a warm and welcoming atmosphere. The cost of the 2 course meal, including tea/coffee and mints is still only £10 per person.

To book a place or for further information please call Janice on 880668.

ACTIVITY & INTEREST GROUPS

HISTORICAL SOCIETY

The next meeting of Husbands Bosworth Historical Society will be on Wednesday, February 5th at 7.30pm in the Sports Pavilion, Kilworth Road.

We will be hoping for better weather because our speaker for the evening will be Ian Clarkson, who will be taking us with him on a recent trip to Easter Island!

The island is one of the most remote inhabited places on the planet, almost 1,300 miles from its nearest neighbour, Pitcairn Island. With almost 1,000 enigmatic statues scattered across the island it is a designated World Heritage Site.

The meeting is open to non-members when a door charge of £2.50 is requested.

Call Melvyn on 880281 for details.

ART GROUP

Bosworth Art Group is a small, friendly and informal group of arty minded souls meeting on alternate Tuesday mornings, 10.00am to 12.30 in the Sports Pavilion, Kilworth Road. Meetings are on a pay-as-you-go basis, £2.50 per session to cover room hire and coffee.

The group is self tutored and all mediums and skill levels are welcomed. Interested? Come along and try a session... Art Group dates for February are: Tuesdays, 11th and 25th. For details call Melvyn on 880281.

MILLENNIUM WOOD

Brickfield Spinney on Kilworth Road was developed as a community project to mark the new millennium. The site was previously open pastureland, ridge and furrow, scrub and woodland but had originally been a claypit and open-hearth brickworks. It's likely that much of the red-brick Victorian building that took place in the village was furnished with Bosworth bricks from this pit.

The pastureland, claypit and woodland was purchased from Leicestershire County Council by local subscription and grant funding on behalf of the village in 2002 and has since been extensively remodelled and planted to create a wildlife haven and natural environment.

The Woodland is managed by trustees, who organise regular conservation, repair and maintenance days, usually on the second Saturday of each month. These work party mornings are a great way to workout in the fresh air whilst helping to preserve a local amenity.

The next workparty morning is on Saturday, February 15th, 9.30am to 12.30pm.

For more information about the Woodland please call Jackie on 880910.

CRAFT GROUP

The Craft Group is a friendly group that meets on the second Wednesday of each month in the Committee Room of the Village Hall where you can practise your craft away from the distractions of home life. Call Gail on 880413.

CAUSEWAY COFFEE

The Causeway Charity hosts a coffee morning, open to anyone living alone and retired, on the second Friday of each month. The next meeting is on Friday, February 14th, 10.00am to 11.30am in the Sports Pavilion, Call Heather on 880165 for details.

VILLAGE HALL BOOKINGS

01858 880426 07766022901

husbandsbosworthvh@gmail.com

www.husbandsbosworthvillagehall.co.uk

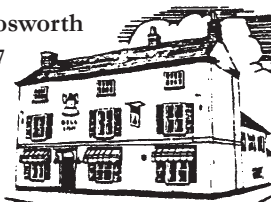
SPORTS PAVILION ENQUIRIES

Audrey Marlow 880316

The Bell Inn

Husbands Bosworth

Tel: 01858 880967



Your new hosts Rob & Hanna welcome you back to your community pub!

Friday, February 14th

Valentine's Night Specials

2 x 8oz fillet steaks £30

Gin tasting, 6 shots each £20 per couple

Vegan menu available

Booking recommended

Follow us on Facebook - HusbandsBosworthBell

FLOWERS BY HEATHER

Husbands Bosworth



Flowers and floral arrangements for any occasion

Call for a free consultation.

Many years of experience in the floral industry.

Follow or like me on Facebook.

Call me on 07773 063063



Happy Feet
Registered Foot Care Specialist



- Toe nail cut
- Corns
- Verrucas
- Ingrown toe nails
- Hard dry skin
- Fungal nails

Home appointments
07842 266575

www.happyfeetmidlands.com

PARISH COUNCIL NEWS

The next Ordinary Meeting of Husbands Bosworth Parish Council will be on Tuesday, February 4th at 7.30pm in the Committee Room of the Village Hall. All are welcome. Members of the public are invited to address the meeting early in the Agenda.

The Parish Council holds a Parish Surgery on the third Saturday of each month, 10.00am to 12.00pm in the Parish Office, 2a Mowsley Road. Residents are invited to come along and discuss, informally, any matter of parish business with a Parish Councillor.

The next Parish Surgery will be on Saturday, February 15th.

A full copy of the Minutes of any past meeting of the Parish Council can be viewed or downloaded at: www.husbandsbosworthpc.org.uk or by request to the Parish Clerk.

BUS SERVICE REVIEW

As part of the implementation of the new Passenger Transport Policy and Strategy the County Council has been working on the review of local bus services in the Harborough area. The aim of the review is to deliver fit-for-purpose solutions that provide access to essential facilities and services, which are sustainable for the future.

The review of Harborough services (33, 44 and 58) is currently underway and it is anticipated that LCC will be engaging with affected communities in early spring 2020.

Meanwhile contracts have been extended to enable the review to be completed and it is intended that all of the Harborough area local bus services will continue to operate to their existing timetables until the review is complete.

BRUNTINGTHORPE CAR TRANSPORTERS

At the recent Harborough District Council planning meeting councillors considered an application tabled by C. Walton Ltd for extending the existing operations at the car storage and distribution site. Concerns were raised on behalf of the Welford Action Group by member David Ireland, that the operators hadn't complied with the previous planning agreement and were simply seeking approval in the new application to regularise their previous non-compliance. Councillors conceded that the operators had failed to control the transporters coming through Husbands Bosworth and Welford. Whilst the application was approved without amendment the refreshed arguments raised may reduce the plague of car transporters passing through Husbands Bosworth and Welford. Councillors asked the operators to work with local communities and consider introducing measures to show goodwill, including installing monitoring devices, informing Sat-Nav companies about the restrictions of the route and the use of better tracking technology for subcontractor transporter firms.

The transport plan, which was approved as part of the application, sets out the routes that car transporter drivers using Bruntingthorpe can use. To the south drivers must use the Welford Road, Pincet Lane and Lutterworth Road to join the major route system at the M1. Drivers are not permitted to travel through Husbands Bosworth or Welford, and residents can report any car transporters (empty or loaded) that are not complying with this route. Residents can also complain about dangerous driving or any damage caused by drivers.

Complaints should be made by email to: tptcomplaint@bruntingthorpe.com or by phone 0116 2799323. Complaints should state the nature of the offence, the location, the time of the offence, transporter branding and registration number, and ideally include a photograph. C Walton Ltd have agreed to respond within 5 days and will take disciplinary action against drivers and hauliers that break the rules.

N & S A Fisher – Wigston

Spa Lane

Wigston, LE18 3QD

www.fisherswigston.co.uk

Tel. 0116 288 1101



We offer:

New Ford and Used Vehicle Sales

Ford Factory Trained Technicians

All Makes Servicing & M.o.T

FREE Ford Assist – AA Home Start & European Cover on all Ford Servicing

FREE Collection & Delivery Service

LOCAL OFFICERS

Husbands Bosworth Parish Council:

Councillors

Patricia Hobson (Chair)

William Fletcher

Melvyn Forman

Jackie Fletcher

Laura Meridith

James Bolter

Parish Clerk

Sarah Mason

2a Mowsley Road

H.B. LE17 6LR Tel: 881109

clerk@husbandsbosworthpc.org.uk

District Councillor

Amanda Nunn

a.nunn@harborough.gov.uk

County Councillor

Blake Pain Tel: 01858 411021

blake.pain@leics.gov.uk

Member of Parliament

Neil O'Brien Tel: 0207 2191802

neil.obrien.mp@parliament.uk

PLEASE NOTE REVISED

PARISH OFFICE OPENING HOURS

Monday 9.30am - 1.00pm

Tuesday 9.30am - 1.00pm

Wednesday Closed

Thursday 9.30am - 1.00pm

Friday 9.30am - 1.00pm

Third Sat. only: 10:00 - 12:00pm

Sunday Closed

District of Harborough Bin Calendar 2019 / 20



GREEN BIN

You'll need to sign up for GREEN BIN COLLECTION before February 16th to ensure your green bin collections start from April.

Subscribe today via our website at:
www.harborough.gov.uk/green-bin

Feb-20				
Mo	Tu	We	Th	Fr
3	4	5	6	7
10	11	12	13	14
17	18	19	20	21
24	25	26	27	28

Mar-20				
Mo	Tu	We	Th	Fr
2	3	4	5	6
9	10	11	12	13
16	17	18	19	20
23	24	25	26	27
30	31			

Apr-20				
Mo	Tu	We	Th	Fr
	1	2	3	
6	7	8	9	10
13	14	15	16	17
20	21	22	23	24
27	28	29	30	

May-20				
Mo	Tu	We	Th	Fr
				1
4	5	6	7	8
11	12	13	14	15
18	19	20	21	22
25	26	27	28	29

Jun-20				
Mo	Tu	We	Th	Fr
1	2	3	4	5
8	9	10	11	12
15	16	17	18	19
22	23	24	25	26
29	30			

Jul-20				
Mo	Tu	We	Th	Fr
	1	2	3	
6	7	8	9	10
13	14	15	16	17
20	21	22	23	24
27	28	29	30	31

Aug-20				
Mo	Tu	We	Th	Fr
3	4	5	6	7
10	11	12	13	14
17	18	19	20	21
24	25	26	27	28

Sep-20				
Mo	Tu	We	Th	Fr
	1	2	3	4
7	8	9	10	11
14	15	16	17	18
21	22	23	24	25
28	29	30		

Oct-20				
Mo	Tu	We	Th	Fr
		1	2	
5	6	7	8	9
12	13	14	15	16
19	20	21	22	23
26	27	28	29	30

Nov-20				
Mo	Tu	We	Th	Fr
2	3	4	5	6
9	10	11	12	13
16	17	18	19	20
23	24	25	26	27
30				

CHURCH NEWS

All Saints Parish Church, Methodist Chapel & St. Mary's Roman Catholic Church

FROM THE RECTORY

So, how many times since the start of this year have you heard someone crack a joke about your vision being better than it was before, now that it is 2020? Or that it is the year of the optician? The date in a way is a gift to comedians.

There are others who see it as significant for other reasons. An organisation called HOPE is calling for people to set aside 20 minutes to pray on the 20th of each month at 20.20 hours and all around the globe people of faith are making a commitment to do this. They are particularly keen for us to pray for a sharing with others about the love of God - and this can be no bad thing - we could all do with more love in our lives, and particularly the love of God, the realisation of which is sorely needed in all our lives and in our world.

Have you made resolutions for this new year? I guess by February when you will be reading this, they may already have been broken, but congratulations if you are sticking to whatever you decided to do.

One of the things the international community is resolving to do more and more is to act on the global warming problem and try to reduce carbon emissions. Various dates are set for cities become carbon neutral, with Glasgow setting itself a timescale of just 10 years - with 70% of their population living in flats they have a plan to introduce electric buses among other things. Only time will tell how successful they are.

It is something we can probably all contribute towards in some small way, yet none of us can make a major difference on our own. Maybe 2020 could be the year to resolve to discover how we can make a difference in our own lifestyles, learn what is good and what is not and make some small changes in that direction. Or maybe there is something we could do together as a community.

Whatever your resolutions at this time - to pray more, to change something to contribute to the fight against global warming or something completely different - my prayer is that you will know God's love surrounding you and his peace within your heart, and that your journey through this year of 2020 will be a good adventure making wonderful memories. Peace be with you.

Liz ☩

Parish Notices

Margaret Winifred Bradley

of Bell Lane
November 30th 2019
Aged 80 years

Diane Elizabeth Hall

of Church Street
December 23rd 2019
Aged 59 years

Philip Tideswell

of Lammas Close
January 11th 2020
Aged 73 years
R.I.P.

ALL SAINTS FLOWER ROTA

February:

Heather O'Connor

LONG RUNNING SUCCESS

Our own Sylvia Price is running the London Marathon this year and is looking for donations.

Sylvia's chosen charity is Guide Dogs.

"I have no direct family connection with the charity but over the last few months I been a guide partner for visually impaired runners at my local Parkrun, which has made me realise just how important it is for visually impaired people to participate as an equal in such events. I have also volunteered as 'dog sitter' when their owners have been participating, which is an amazing experience, especially when the runner and their guide dog are reunited at the end! The bond they have is incredible and it's just amazing to see just how the quality of lives can be improved with the aid of their 'best friend'. So, if you are able, please consider a donation, either to me personally or via the charity-giving site. <https://uk.virginmoneygiving.com/SylviaPrice>".

✠CHURCH SERVICES ✠

Hexagon Benefice

2	9.30am Shearsby 11.00am Communion Thed. 6.00pm Evensong Arnesby
9	9.30am Arnesby 11.00am Comm. HB 11.00am B'thorpe 6.00pm Evensong Mowsley
16	10.30am Benefice Communion Thedd.
23	9.30am Family Service Mowsley 9.30am Family Service Shearsby 11.00am Arnesby with B'thorpe 5.00pm Promise Keepers HB
26	ASH WEDNESDAY 9.15am Communion HB 7.00pm Arnesby

Short Communion every Wed. 9.15am HB

Churchwarden:

Diana Jones 880741

Rector:

Liz Bickley 880351

St Mary's Roman Catholic Church

Services every Sunday 8.30am.

Contact:

Robert Constable-Maxwell 880361

Father Owen O'Neil 462359

STEFAN the HANDYMAN

- Quality woodwork
- Painting
- Tiling
- DIY
- Repairs
- Home maintenance, and lots more...

Not sure it's a job for Stefan? Just pick up the phone and ask!

01858 881775

StefantheHandyman@outlook.com

Facebook: @StefantheHandyman



WOODPECKER TREE SURGERY

All aspects of tree-work undertaken from dismantling large roadside trees to pruning and reshaping small garden trees.

We also offer a stump grinding service.

Professionally qualified and insured.

For free quotation and advice call

Chris on: 01858 434591

www.woodpeckertreesurgery.co.uk

DIARY DATES for FEBRUARY

Tuesday 4 th	Parish Council meeting, 7.30pm Committee Room, Village Hall
Wednesday 5 th	Historical Society talk: Easter Island, 7.30pm Sport Pavilion
Thursday 6 th	Bosworth Tots, 9.30am - 12.30pm Village Hall
Tuesday 11 th	Art Group, 10.00am - 12.30pm Sports Pavilion
Wednesday 12 th	Craft Group, 7.30pm Committee Room, Village Hall
Friday 14 th	Causeway Coffee Morning, 10.00am - 11.30am Pavilion
Saturday 15 th	Parish Council surgery, 10.00am - 12.00pm Parish Office, 2a Mowsley Road
Saturday 15 th	Millennium Wood work party 9.30am to 12.30pm
Thursday 20 th	Bosworth Tots, 9.30am - 12.30pm Village Hall
Friday 21 st	Mobile library
Tuesday 25 th	Shrove Tuesday - Pancake Day...yay!
Wednesday 26 th	Ash Wednesday
Tuesday 25 th	Art Group, 10.00am - 12.30pm Sports Pavilion
Thursday 27 th	Village Lunch, 12.30pm Kilworth Springs Golf Club

FORTHCOMING EVENTS

Friday May 8 th	VE DAY 75
Saturday, May 16 th	FOBS Safari Supper 2020

LOCAL PLANNING NEWS

The following applications have been submitted to Harborough District Council:

- 19/01949/FUL Erection of a single and two storey front extension, single storey rear extension and new dropped kerb access, 14 Welford Road
- 19/01996/REM Erection of 3 detached houses (reserved matters of 17/01400/OUT including details of access, appearance, landscaping, layout and scale)(resubmission of 19/00504/REM), Land off Broad Lane

Recently determined applications:

- 18/01320/FUL (*Approved*) Erection of 30 dwellings, including the formation of a new vehicular access, car parking, landscaping, drainage and other associated works, Land Adj. Knights Close, Welford Road
- 19/01454/FUL (*Approved*) Conversion of stable block to ancillary offices, storage and staffroom (rev. scheme), Land off Leicester Road
- 19/01686/PCD (*Approved*) Discharge of Condition 3 (materials) of 18/01276/FUL, Lavender Lakes Livery, Leicester Road
- 19/01717/TCA (*Approved*) Works to tree (fell), Croft House, 39 Mowsley Road
- 19/01807/TCA (*Approved*) Works to trees (fell), Toad Hall, Honeyput Lane
- 19/01814/FUL (*Approved*) Erection of a single storey rear extension, 14 Fernie Court

Current applications may be inspected during normal working hours at the Council Offices, The Symington Building, Adam & Eve Street, Market Harborough.

Planning applications and other aspects of local government can now be viewed on-line at www.harboroughonline.co.uk

MOBILE LIBRARY

*The Mobile Library calls on the third Friday of each month.
(See Diary Dates for details)*

STOPS & TIMES

School, Welford Road:	10.25am - 11.25am
Berridges Lane:	11.30am - 12.10pm
Butt Lane:	12.15pm - 12.50pm

Now lending Talking Books on CD & tape

***** You can now renew on-line or by phone *****

BUGLE.....FREE ADS.

Email: bosworth_bugle@talk21.com

FOR SALE

KETER polypropylene garden store, 5ft x 2½ft £30.

Nikki Sterling Mountmaster rifle sight 4 x 32 £30.

Seagull 4 x 28 telescopic sight, suitable for air rifle £15.

Call/Text 07714 025566



P.C. BUILDING SERVICES LTD



Complete building service
Specialist in new build
Quality renovations
& Extensions

Tel/Fax 01858 881202
Email: pcbuildserv@btinternet.com

Walton Grange, Bosworth Road
Walton, Lutterworth, Leics LE17 5RW

Springfields



**HIGH STREET
HUSBANDS BOSWORTH**

Opening times:
6.00am - 9.00pm
7 days a week
**FREE to use Cash
Dispenser**

National Lottery