

FOOTBALL'S COMING HOME!

Anyone who has been near the Recreation Ground recently might have noticed a bit of unusual activity. Goalposts have arrived and football practice has been going on!

After a very long gap, we will once again have regular football matches here on the Playing Field. Chair of the Parish Council, Patricia Hobson, commented: "The Parish Council is delighted to welcome North Kilworth Football Club to play and train here and we hope this will be the beginning of a long and mutually beneficial relationship. We think this is a great new development for the village and it is good to have received lots of positive comments already from people who are very pleased to see the area being so well-used - and this is only the start!"

Currently, the Pavilion is closed and, as at writing, we have no information on when it may open again for activities. Football training outside, though, can take place within small groups. Above all, the Football Club will be a lively addition to the village and will be fun (and free) for everyone to watch."



Richard Brown, Chairman of North Kilworth Football Club, said "We would like to thank Chris Ascough who was instrumental in the early stages of this relationship. As a villager and a coach of our U12s, we asked Chris to speak to the Parish Council and this helped start the ball rolling, as he could discuss the benefits on both sides. North Kilworth is a well-regarded, highly respected club and we hope that we can be seen as an asset to the community and very much want to help improve the facility and give it the use it deserves. The amount of work that has already gone into the move and early stages of the transition is remarkable, but we are pleased to see the field and goals being used, making it all worthwhile!"

We will be bringing our Adult Saturday and Sunday teams, as well as our Soccer School, U7s, U8s, U9s and our two U13 sides to Husbands Bosworth whilst continuing our relationship with South Kilworth Parish Council for our other teams.

Finally, we would like to thank the Parish Council for the opportunity to play here and look forward to seeing you at some of our games."

NKFC and the Parish Council would also like to thank various people for help with the task of improving the soil levels on the field. Jon and Aidy from Snowdon Homes for providing topsoil for levelling, AFT Plant Hire for the equipment and drivers and Robert Brown for harrowing and rolling.

WOOF JUSTICE

We make no apology for carrying a lot of articles relating to dog poo in the past - it is, after all, one of the highlights of conversation in the village. Generally though, most dog walkers are conscientious enough and do clear up after their charges. However, during the lockdown period we have seen more dog walking - and its residues, so, again we remind dog walkers that not only is it anti-social to not pick up after your dog, but it is also an offence.

Recently, and again this may be related to lockdown, we have heard a number of complaints of barking dogs - constantly barking, presumably dogs shut out whilst their owners are home working or home schooling, or abandoned whilst their owners are queuing outside Primark...

So, please be considerate of those around you - folk are at home and are likely to be working from home more now.

SHOP LOCAL SHOP WELL

With the recent further relaxation on lockdown it's obviously something of a relief for many consumers to be able to extend their shopping forays back to something approaching pre-lockdown.

Some of the measures that have sprung into place out of commercial necessity will no doubt quietly pop back down as their traditional trading practices are allowed to return. The troubles have, though, shown that there are viable alternatives to what many of us previously considered traditional consumerism and good old-fashioned retail therapy.

On-line business, takeaways, click & collect and pop-ups have all risen to take up the slack where their traditional over-the-threshold businesses have been curtailed, and there's no doubt that our shopping habits will change and many of these novel business models will continue.

What's more, we have seen the smaller, more specialised and above all, local traders fill the gaps where the major retailers, pressured by their own footfall, have struggled to cope. So, let's thank the independents who literally saved our bacon and, where they can supply sensibly, continue to support them and help to ensure their futures as we emerge from the darkness. Shop local, shop well and shop wise...



BUGLE POSTBAG

From Lorraine Reynolds, High Street

The last few months have been a trying time for everyone. With no idea if and when things will get back to normal and missing family and friends, the monthly parcels from the Causeway Coffee Morning have been a lovely distraction, not to mention delicious! The other recipients I've spoken to all say how much they've enjoyed receiving them. I wanted to say thank you so much for the effort you've put into this. It has been hugely appreciated. I look forward to us all being soon able to meet again for coffee and cake!

Editor's Note: The Causeway Charity coffee mornings have been suspended during the present troubles and a number of other recipients have also been in touch to thank the organisers for their care and thoughtfulness.

POLICE FILE



NHS TEST AND TRACE

Unfortunately, some scammers, under the cloak of the confusion over the working of the Track and Trace scheme, are already trying to con folk. Here's some information on how the system works and what to be aware of.

Contact tracers WILL:

Only call you from 0300 013 5000

Only send you text messages from 'NHS'

Ask you to sign into the NHS Test and Trace contact-tracing website

Ask for your full name and date of birth and postcode

Ask about the coronavirus symptoms (if any) you have been experiencing

Ask you to provide details of recent close contacts

Ask if any of your contacts is under 18 or lives outside of England

Contact tracers will NEVER:

Ask you to dial a premium rate number

Ask you to make any form of payment or purchase a product

Ask for details about your bank account

Ask for your social media identities or login details or those of your contacts

Ask you for any passwords or PINs, or ask you to set up any passwords or PINs

Provide medical advice on any treatment

Ask you to download any software or ask you to hand over control of your device

Ask you to access any website that does not belong to the government or NHS

PLEASE HELP US TO RAISE AWARENESS BY SHARING THIS INFORMATION

ON-LINE ALERTS

Stay informed of policing up-to-date news on criminal activity in your local area and sign up to www.neighbourhoodlink.co.uk.

Been victim of crime and need advice?

Go to: www.leics.police.uk/support

Northamptonshire Police have reported a spate of vehicle crimes in the West Haddon, Cold Ashby, Yelvertoft areas in recent weeks. Incidents have included parked vehicles being tampered with, items stolen from vehicles and damage caused. Keep an eye out for strange vehicles and suspicious activity.

THE BUGLE TEAM

Editor:

Melvyn Forman

10 Church Lane

Tel: 880281

Email: bosworth_bugle@talk21.com

Treasurer & Advertising:

Ralph Horton

18 Highcroft

Tel: 880526

Contacts:

Mike & Sylvia Price

3 Highcroft

Tel: 880902

Jo Horton

18 Highcroft.

Tel: 880526

Frances Smith

10 Butt Lane

Tel: 880225

Penny Mattock

9 Fernie Court

Tel: 881140

Heather O'Connor

16 Fernie Court

Tel: 880165

Postal Subscription & distribution:

Melvyn Forman

Tel: 880281

Email: bosworth_bugle@talk21.com

www.husbandsbosworth.info

COPY DEADLINE

15th OF THE MONTH

PRECEDING PUBLICATION

POLICE FILE

Your Local Neighbourhood Policing Team:

Sgt. 26 Ryan Coleman

ryan.coleman@leicestershire.pnn.police.uk

PC 1261 Andy Cooper

andrew.cooper1261@leicestershire.pnn.police.uk

PC 2192 Paul Farrar

paul.farrar@leicestershire.pnn.police.uk

PC 2872 James Day

james.day2@leicestershire.pnn.police.uk

PCSO 6569 Peter Willson

peter.willson@leicestershire.pnn.police.uk

PCSO 6056 Jay Bellamy

jay.bellamy6056@leicestershire.pnn.police.uk

Or go to:

www.leics.police.uk and use the CONTACT US link at the bottom of the page.

CRIMESTOPPERS:

0800 555111

ACTION FRAUD:

www.actionfraud.police.uk

0300 123 2040

INMAN HALL BUILDING & PLASTERING
FINE BUILDING AND PLASTERING SERVICES

- RENOVATION
- EMERGENCY REPAIRS
- ROOFING
- EXTENSIONS
- BUILDING MAINTENANCE
- PLASTERING

CALL GRAY INMAN-HALL : 07938217578
OR EMAIL : INMAN-HALLBUILDING@HOTMAIL.COM

Springfields

Food to Go	Groceries	Fresh Dairy Produce
In Store Bakery	Fresh Meat	Non Grocery Items
National Lottery	Fruit & Veg	Post Office
Newsagents	Wines, Spirits & Beers	ATM

**HIGH STREET
HUSBANDS BOSWORTH**

Opening times:
6.00am - 9.00pm
7 days a week
**FREE to use Cash
Dispenser**

National Lottery

BOSWORTH IN FOCUS

VILLAGE DOG WALK

Everyone has a wish list, don't they? For several years now, our Parish Council wish list has included a dog walk, which would be made available when funds allowed.

A number of comments made in the Neighbourhood Plan indicated that dog walking facilities were regarded as very important in the village. Therefore, in 2019, the Council decided to take advantage of a National Grid carbon offset scheme to plant some sapling trees in the area planned for the dog walk, at the lower end of the Playing Field. This year, in a mutually beneficial collaboration between North Kilworth Football Club and the Parish Council, we are delighted to be able to have a post and rail fence installed across the Playing Field, which will clearly separate the Dog Walk from the games areas. This should be in place very soon and, once the requisite waste bin and notices are installed, we will be all set to open up!

We are very lucky in Bosworth to have a variety of walks available around the village which are suitable for dog walking. However, for those dog owners who cannot walk too far, and also those who may be short of time, this new dog-walk should be just the job.

Patricia Hobson

WEATHER LOG

MAY 2020

Highest temp: 29°C on 12th

Lowest temp: 0°C on 21st

Air frosts: 0

Rainfall Total: 1.8mm (0.07")

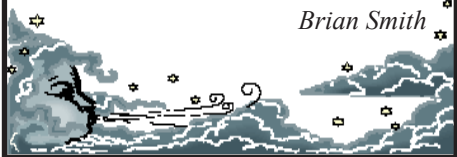
Wettest day: 0.9mm (0.04") on 23rd

Rain days: 3

Total sunshine: 312.7 hours

Cummulative Rainfall 2020: 248.7 mm

Brian Smith



WILD ABOUT BOSWORTH

Common Wasp - *Vespula vulgaris*

Starting in spring, queens emerge from their winter hidey-holes and hunt for a nest site. Here she lays and nurtures some worker eggs. After this initial batch hatch, she settles down to a life of egg laying; up to a hundred eggs per day. Meanwhile, her offspring care for the nest and larvae.

Wasp grubs are carnivorous and it's the workers' job to catch and feed them dissected insects. And, here's one of wasps' plus points. They remove an enormous number of pests from the environment - around a quarter of a million aphids per colony. Knowledgeable farmers and gardeners welcome them as an environmentally friendly insecticide. The workers, which live on carbohydrates, have two sources of nutrition. They drink a sugary (trophallactic) liquor the larvae extrude and they harvest nectar from plants. And, here's wasps' second plus point - like bees, they are important pollinators.

The vespiary grows throughout the summer, often reaching around 5000 individuals. Come autumn, the queen's last duty is to lay drone and queen eggs, which signals the death knell for the colony. After hatching, the virgin queens fly off to mate and search for somewhere to hibernate. Meanwhile, her destiny complete, the queen dies and anarchy breaks out in the colony. Within a short while, the nest becomes a dormant husk.

The common wasp is frequently confused with another species called the German wasp (*Vespula germanica*). To tell the difference, look closely between their eyes, and you'll see the German wasp has three black spots, whereas the common sports a vertical black bar.

Some other benefits of wasps include, a promising cancer treatment, the ability to detect illegal drugs and explosives, and the inspiration for the invention of paper! So, if you can't love them, at least try not to hate them.

Mike Chanter



PEBBLE HALL WASTE

Welford Action Group have voiced concerns at the apparent increase in traffic to and from the waste site at Pebble Hall and are calling for the operators to provide a breakdown of traffic using the site.

Once the energy generating plant was up and running assurances were given that the number of vehicles visiting the site would drop dramatically as the processed waste would be far less than the bulk waste that the plant generated previously - the only exiting traffic would be spent material and oils. This doesn't appear to be the case and bulk waste seem to be coming out of the site in greater volumes than previously.

MOTORWAY MAINTENANCE

Highways England, the strategic roads authority, has scheduled essential carriageway and bridge repairs between junction 18 and 20 of the M1. The works will be carried out overnight, which will see alternate southbound and northbound closures of the carriageways and are due to commence at the end of June and finish by the end of July.

Diversions will be signed, but southbound closures are likely to effect the A5199 through Bosworth and Welford with noticeably heavier than usual traffic flows, especially HGV traffic, at periods during the operation.

NC Decorating
A STROKE OF PERFECTION
Nobby Clarke
QUALITY PAINTING & DECORATING FOR OVER 25 YEARS
07761040218
ncdecorating.co.uk
5 Lammas Close - Husbands Bosworth - Leicestershire - LE17 6LL

STEFAN the HANDYMAN

- Quality woodwork
- Painting
- Tiling
- DIY
- Repairs
- Home maintenance, and lots more...!

Not sure it's a job for Stefan? Just pick up the phone and ask!

01858 881775

StefantheHandyman@outlook.com

Facebook: @StefantheHandyman



BYGONE BOSWORTH

Images from the Historical Society's Archive Collection

Last month we highlighted Bosworth's north-south strategic road link and the importance of Leicester Road before the M1 was built. As we noted, Bosworth sits on a major crossroads, the other being the east-west A4304, formerly the A427 Trunk Road.

From as early as Roman times transport links nationally, north-south, have been good, historically linking the capital with its subjects. East-west connections, however, have always been few and far between, which mattered little until the Industrial Revolution moved the focus of commerce to the Black Country. Suddenly there became a need to transport goods and services across the width of the country, especially with export markets emerging and the east coast ports developing as a reaction to the strangle hold that the southern ports held.

Even rail links across the belly of the country were sparse, made up of a mishmash of branch lines and joint ventures such as our own Rugby to Stamford line, a London and North Western and Midland Railway collaboration. This illogical compromise still persists - try travelling by rail from Birmingham to the east coast today and you will likely be sent on a tortuous loop via Leicester, Melton Mowbray and Stamford.

So the A427, one of the few cross-country road links became a busy transport route, especially for goods traffic from the industrial Midlands to the east. In the late 1960s freight traffic started rolling through Bosworth on the A427 to the newly opened container port at Felixstowe and the ferry port at Harwich, soon prompting calls for upgrades to the route. In Bosworth the longer vehicles and increase in traffic caused problems on the hairpin bend opposite the church, which resulted in the graveyard being shaved back to straighten the corner and alleviate the problem.

As traffic increased, pressure was put on the roads authority to devise alternative solutions and a series of by-passes were planned for the villages along the route. In a recent trawl of Parish Council documents this plan of Bosworth's proposed by-pass came to light. As can be imagined, there was much debate over the route as it passed close to grade II* listed Bosworth Hall and effectively severed the hall off from its parkland.

All along the route there were problems, and when a proposed new route, the M1-A1 Link Road, was tabled much of the fire went out of the by-pass plan. The new road, classified as the A14, which opened in 1991, was controversial in its own right but promised to take all this cross-country traffic and the by-pass proposal was quietly shelved, although it wasn't officially dropped until around 2010.



LOCKDOWN WORK-OUT

Begin by standing on a comfortable surface, where you have plenty of room on each side. With a 5lb potato bag in each hand extend your arms straight out from your sides and hold them there for as long as you can, then relax. Each day you will find that you can hold this position a little longer. After a couple of weeks, move up to 10lb potato bags. Then try 50lb potato bags and eventually try to get where you can lift a 100lb potato bag in each hand and hold your arms straight out for a full minute. After you feel confident at that level put a potato in each bag.

COMPLETE CAR CARE

Accident repair specialist
Bodywork, dent, scratch and stone-
chip repair
Servicing, alloy refurbishment,
welding
MoT repair
Valeting, full body polish
Parking sensors, tyres & exhausts,
etc. fitted
Call Ben on 01858 880404
bencompletecarcare@outlook.com

F&W Plumbing & Heating Services Ltd

22 Elmcroft Road, North Kilworth,
LE176HX
Bespoke bathroom & kitchen design and
installation
All types of wall and floor tiling
Hot and cold water systems
Gas-fired boiler installations and system
upgrades
Unvented hot water systems
Gas Safe and Bepec registered
Contact Jason on 07866741261
Email: jayspanner@btinternet.com
www.fandwplumbingandheatingservices.co.uk
Over 30 years experience in designing and installing
contemporary and traditional kitchens and bathrooms
Project manage personally with all associated trades
for a co-ordinated high quality finish with minimum
disruption

WOODPECKER TREE SURGERY

All aspects of tree-work undertaken
from dismantling large roadside
trees to pruning and reshaping
small garden trees.
We also offer a stump grinding
service.
Professionally qualified and
insured.
For free quotation and
advice call
Chris on: 01858 434591
www.woodpeckertreesurgery.co.uk

MORE BOSWORTH IN FOCUS

WALK ABOUT BOSWORTH

Look East...

From the village, head east towards Theddingworth along the A4304. In Theddingworth, take the first left down Taylors Lane, then take the left fork where the road divides and continue north towards Mowsley until you reach the canal bridge.

Walk down the track beside the bridge and follow the towpath back to Bosworth. Leave the canal at bridge 46, Honeypot Bridge, and you'll find yourself back on Broad Lane. Alternatively, you can continue along the towpath and over the tunnel until you reach Leicester Road and turn left towards the village.

If you're feeling energetic, there are two ways to extend the walk. Firstly, there's a footpath that turns right off the Mowsley Road, before you reach the canal bridge, across the fields. (*See picture right.*) It's marked with a green footpath sign, so it's not hard to find. The path runs along the left-hand side of the hedge but further on there's a gap in the hedge and a little wooden bridge over a ditch, it's a bit overgrown but passable. Bear left and walk around the corner of the field, and you'll come to a canal bridge. To reach the towpath and head homewards, climb the steps and look for the hidden path around the left-hand buttress. For a longer diversion, take right-hand fork as you leave Theddingworth, instead of the left, and then take the first left towards Laughton. Catch your breath on the convenient bench and enjoy the view... This is Station Road and you'll soon pass the old signal box, now a private dwelling, which was part of Theddingworth Station. A kilometre further on you'll reach the canal and can turn towards home. Depending on the route chosen, and whether you dawdle or run, allow about two hours.

Mike Chanter



AT HOME IN BOSWORTH

EXPerT Eye on Property

One of the most important things to look out for in a prospective purchase is rising damp. Rising damp is caused by ground water soaking into bricks and mortar which, believe it or not, are porous and pick up water in the same way that a sponge does. The best way to envisage the way that rising damp works is to take a piece of kitchen roll and dip the bottom edge into a bowl of water. The water will then magically move up the paper. This is called capillary action and rising damp works exactly the same way. The towel above where the waterline stops, like the upper part of a wall in a house with rising damp, may be perfectly dry, but up to that point it will be soaking. It is this effect that causes the tide marks visible on the inside walls of houses with rising damp. As the dampness moves up the wall it draws up salts from the ground with it. These salts then attack the mortar and the plaster causing it to decay. Also they may form crystals on the mortar, which may cause it to come away from the wall. Permanently moist wooden floors and joists can also rot and can cause all sorts of expensive problems, including collapsing floors!

Newer properties tend to have a physical damp-proof course, usually a layer of PVC, put in when they are built. These do not decay and should cause no problems. Older houses built with damp-proofing tended to use slate or felt and these can break down over time, losing their effectiveness. Houses built before the turn of the 20th century are unlikely to have had any kind of damp proofing at all.

If you are looking at an older property, ask the vendor if they have had any damp-proofing work. If so they should have a certificate to prove it. Damp proofing applied retroactively to a house usually relies on the injection of chemicals into the walls. These then soak into the pores in the brick work and mortar course, blocking the rise of water. Depending on the method used there will be holes in either the bricks or the mortar course through which the chemicals will have been applied. These holes may be filled with mortar or plastic plugs and will be visible a couple of inches off the ground. Inside have a good look for damp, even if damp proofing has been performed, because a house that's suffering badly can take ages to dry out. Walls that have been affected by rising damp should have been re-plastered. Of course people who just want to sell a property with the minimum of fuss may just try to paper over the damp. Keep a look out and lift up the edges of carpets to check the floors etc.

mark.baldwin@exp-uk.co.uk

Mark Baldwin

The Bell Inn

Husbands Bosworth

Tel: 01858 880967



Your hosts Rob & Hanna look forward to welcoming you back to your community pub!

**P.C. BUILDING SERVICES LTD**

Complete building service
Specialist in new build
Quality renovations
& Extensions

Tel/Fax 01858 881202
Email: pcbuidserv@btinternet.com

Walton Grange, Bosworth Road
Walton, Lutterworth, Leics LE17 5RW

PARISH COUNCIL NEWS

Report of the Parish Council Virtual Meeting held on Tuesday, June 2nd 2020.

Present: Full Council and no members of the public.

The Minutes of the meeting held on Tuesday, March 3rd were approved. *[Meeting agreed for these to be signed].*

Matters Arising

■ Coun. Forman advised that progress on the Neighbourhood Plan had been halted due to the coronavirus crisis and the Referendum would be held at a date to be advised by HDC. The Neighbourhood Plan grant funding had now been signed off and the account closed.

■ Council queried the provision of a replacement waste bin for the Millennium Wood but was advised that HDC were unable to progress this matter at the present time. A combined waste and dog poop bin would be provided in due course, which would be emptied by HDC contractors.

■ The Cricket Club had advised that they are currently looking into the possibility of reforming in the village and requested that the equipment stored in the pavilion be held for the time being. Council felt that a number of items in store wouldn't be of any use to a new group and asked that they be removed as soon as possible and only serviceable items be held over.

Finance

[Problems viewing the content of the Finance Folder meant that this item was held over for further discussion.]

North Kilworth Football Club

■ Council had been approached by North Kilworth Football Club with a view to moving their base to Husbands Bosworth. Following a series of on-site meetings and discussion it was agreed to allow the Club to use the Playing Field and facilities under a hire agreement.

Allotments

■ Council had been approached by a plot holder seeking to install a bee hive at the allotment site on Welford Road. After some discussion Council decided that since the site was open to the public, before any agreement could be made more information would be required regarding safe-guarding and other stipulations.

Conkers Championships

■ The Conkers organisers had approached Council for permission to use the Playing Field and Pavilion for the Conker Championships in October. In light of the accident at last year's event Council felt that the event could no longer continue as a Parish Council fronted event and that the group should arrange their own insurance cover. Council would be prepared to allow the group to use the facilities and may be prepared to contribute towards expenses.

Play Area

■ Council discussed proposals and quotations received for upgrading the soft surfacing in the Play Area. It was noted that costs arose each year for repairing the 'wet-pour' matting and, after discussion, it was agreed to re-cover the existing surfaces with a more durable material to reduce ongoing costs.

■ A quotation was agreed for the replacement of the mound slide steps, which have been eroding away for a while.

Any Other Business

■ Clerk was asked to chase up the Tennis Club lease, which has not been received.

■ Concerns were raised about the erratic street-lighting on Welford Road. Coun. Mrs Hobson informed the meeting that these had not yet been adopted by LCC and were still the responsibility of Davidsons. Clerk was asked to contact Davidsons.

■ Coun. Forman queried the integrity of the water supply in plastic piping in the Pavilion roof-space, which had in the past been chewed by rodents, causing damage to a ceiling. Coun. Hobson would discuss with a plumber the possibility of replacing this with copper piping.

■ Council agreed to obtaining quotations for repainting the cemetery railings.

■ Debris on the footway and broken surfacing on Welford Road would be brought to the attention of LCC Highways.

■ Highways would be contacted regarding the displaced bollard on the Old Green

A full copy of the Minutes can be viewed or downloaded at: www.husbandsbosworthpc.org.uk or by request to the Parish Clerk.

NEIGHBOURHOOD PLAN

Due to the COVID 19 crisis all work on Neighbourhood Plans has been suspended. Our Plan has been approved for referendum by the Examiner and was expected to be presented to the community in May. However due to the suspension it is now unlikely that Harborough District Council will be able to bring this forward to the community until May 2021.

Meanwhile, as has been seen in speculative applications presented by developers in other parts of the country, the Plan, although unadopted, does have some teeth in planning law. As an emerging Plan developers and planners have to take note of the Plan's content and this argument has been used successfully to halt inappropriate development in a number of cases nationally.

'JJ's Kiddycare'



- *OUTSTANDING* Ofsted grading
- * FREE Pre-school sessions for 2, 3 & 4 year olds
- * Full Day Care 0-5yrs
- Situated on a farm site between South Kilworth and Welford
- * Breakfast and After School clubs. (4-14years)
- * Holiday Clubs during all Northants & Leics school breaks

Tel no. 01858 575642
www.jjs-kiddycare.co.uk



One of the Largest Collections of
WWII Vehicles and Militaria in the Midlands.

Our under cover collection includes post war vehicles, Main Battle Tanks, as well as an excellent selection of other American, German and British vehicles. With interactive displays and lots of things to see. Visit on a game day (Saturday, Sunday or selected Wednesday—April to October) and you will get to see some of our vehicles driving around.

01858 880 239

Chat to us Online
www.armourgeddon.co.uk

Office hours Monday to Friday 0900hrs—1700hrs

CHURCH NEWS

All Saints Parish Church, Methodist Chapel & St. Mary's Roman Catholic Church

FROM THE RECTORY

How do you pray? Do your prayers have words that are spoken or are they thoughts in your head that you send in an upward direction, or even just a gut feeling or desire that is never formulated into a thought? Are prayers just asking God for things that we, or other people, need (or want)? "Please God, help me pass my exam today, please make my friend better from his illness, please stop Covid-19 from spreading...etc."

The church teaches that prayer is a conversation with God, our Heavenly Father. Someone recently helpfully gave the illustration of a child's conversation with a parent - it isn't all about asking for things! A conversation is also about listening, getting to know your parent and finding out what they are doing, saying 'Thank you' for what they have given you, saying 'Sorry' for things which have upset them, and much more besides. Sometimes the answer to a request may not be an immediate "Yes".

Prayer is the means by which we make and sustain a relationship with our Father in Heaven - a Father who is loving and kind, good and able, who wants the best for every one of us. A child who only ever speaks to their parent will not get to know them and maybe not become wise. But the child that takes an interest in their parent, spending time with them and listening as well as speaking will learn, will grow and will know that they are loved. It doesn't matter how you pray - whether you shout out to the skies, whisper them under the bed covers, think them or feel them - just make a little time each day to spend with your heavenly Father. It needn't be formal, words are not essential, just pay him some attention and let him show you something of himself - he is there to be discovered by each of us if we will give him the time of day.

Praying you will find him and know yourself loved.

Liz ✝

UNLOCKING LOCKDOWN

The Church of England is actively planning for a phased re-opening of church buildings throughout the country in line with the Government's easing of the lockdown. The timetable obviously remains uncertain as the Government strives to avoid a second spike in the infection rate.

Initially, it is likely that churches will only be allowed to open their doors for private prayer and perhaps for 'small' weddings and funerals, with strict social distancing, provision of hand sanitisers and cleaning routines being adhered to. So, it is likely that only one church in each benefice, churches with water and suitable cleaning facilities, will open initially, and only for one service a month. Obviously, greater gatherings for public worship and singing of hymns will come later. Church authorities, however, have made it clear that it will be up to individual parishes to decide how they deal with the matter, as cleaning and stewarding could be problematic, especially where those carrying out these functions are likely to be elderly and vulnerable themselves. If anyone is able to offer help when All Saints reopens we should be very grateful. Please contact Liz on 880351 or: lizbickley@btinternet.com

Parish Notices

Glyn Jones
of Bell Lane
Died May 22nd 2020
Age 93 years
R.I.P.

✝CHURCH SERVICES ✝

Hexagon Benefice

Churchwarden:

Diana Jones 880741

Rector:

Liz Bickley 880351

St Mary's Roman Catholic Church

Contact:

Robert Constable-Maxwell 880361

Father Owen O'Neil 462359

FLOWERS BY HEATHER

Husbands Bosworth



Flowers and floral arrangements for any occasion

Call for a free consultation. Many years experience in the floral industry.

Follow or like me on Facebook.
Call me on 07773 063063

INTEGRATED COMMUNITY EQUIPMENT LOAN SERVICE FOR LEICESTER, LEICESTERSHIRE AND RUTLAND
URGENT: EQUIPMENT WHICH HAS BEEN LOANED INTO THE COMMUNITY REQUIRED DUE TO COVID-19

If you have been loaned a bed, mattress, hoist or commode that you no longer need...

Please Hand it Back

We need beds, mattresses, hoists and commodes which have been loaned into the community. If you have other equipment to return, please keep hold of it and contact us after the COVID-19 virus.

If you want to Hand Back some equipment and would like to arrange a collection, please call NRS Healthcare on: 0544 893 8375 during opening hours 8am-6pm Monday to Friday 8am-4pm Saturday

Or email your details to: enquiries@lr.nrs-uk.net

Important! Please make sure the item has an NRS Sticker on which includes a bar code!



Together we can help those who need it most

N & S A Fisher – Wigston

Spa Lane

Wigston, LE18 3QD

www.fisherswigston.co.uk

Tel. 0116 288 1101



We offer:

New Ford and Used Vehicle Sales

Ford Factory Trained Technicians

All Makes Servicing & M.o.T

FREE Ford Assist – AA Home Start & European Cover on all Ford Servicing

FREE Collection & Delivery Service

JR BESPOKE PROPERTY RENOVATIONS



JR Bespoke Property Renovations are an experienced and trusted Project Management and Construction team based in North Wigston, Leicestershire

If you have a project or idea in mind, please don't hesitate to contact us either by phone or via our website
Tel: 07846 741 261 (Jason Wright)
www.jrbespokeproperties.com

DIARY DATES for JULY

ALL FORTHCOMING EVENTS SUBJECT TO CONFIRMATION

Friday July 10th Causeway Annual Outing (*to be rearranged*)
Saturday, July 25th Bosworth Hall Sheepdog Trials

FORTHCOMING EVENTS

Sunday, August 30th Horticultural Show (*cancelled*)
Friday, October 16th Millennium Wood Quiz and Fish & Chip Supper (*tbc*)
Saturday November 28th *Action for Children* charity disco
Sat./Sun. 28th /29th Nov. Christmas Festival

LOCAL PLANNING NEWS

The following applications have been submitted to Harborough District Council:

- 20/00524/FUL Erection of stable block, Lavender Lakes, Leicester Road
- 20/00747/PCD Discharge of conditions, re. fencing, materials & ecological survey of 17/01400/OUT, land off Broad Lane
- 20/00759/FUL Change of use residential institute to dental surgery and 2 apartments, demolition of side/rear extn., installation of rear door, installation of enclosed staircase to side elevation, installation of three roof lights to the rear, replacement windows to the rear/side, repositioning of internal staircase, partial demolition of internal walls and installation of new partition walls (revised scheme of 19/00595/FUL) 27 High Street
- 20/00772/PCD Discharge of condition, re. parking and turning facilities of 20/00075/VAC Lavender Lakes Livery, Leicester Road
- 20/00840/PCD Discharge of conditions, re. doors and fenestration, written scheme of investigation and construction method statement of 19/00160/FUL 31 High Street

Current applications may be inspected during normal working hours at the Council Offices, The Symington Building, Adam & Eve Street, Market Harborough.

Recently determined applications:

- 20/00511/FUL Replace existing stable block with office/staffroom associated with agricultural contracting business, land at Hobsons Field, Leicester Road [*Refused*]
- 20/00757/DDD Permission to fell tree, Croft House, 39 Mowsley Road [*Approved*]

Planning applications and other aspects of local government can now be viewed on-line at www.harboroughonline.co.uk

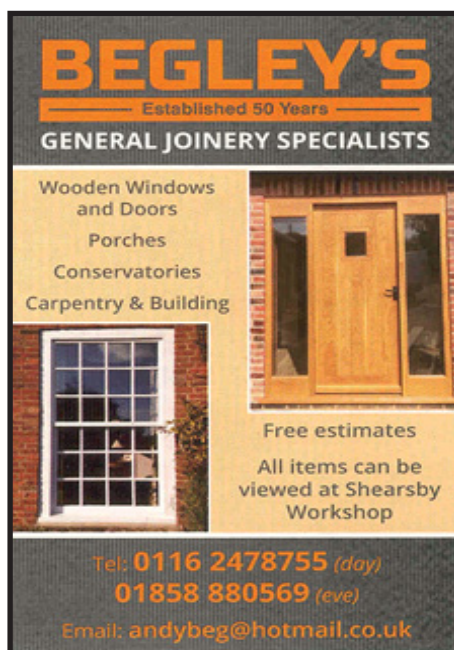
LIBRARY SERVICES

County libraries are all closed, however library members can still access thousands of digital books, audiobooks, magazines and newspapers for free through their phones, tablets or computers. The digital titles also offer a personalised and accessible experience with options for font sizes, translation and voice-overs. To start using the digital library, visit: www.leicestershire.gov.uk/digital-library

You will need a valid Leicestershire Library Card and PIN number and an internet connection. If you are not already a library member you can register online to get started. For help with the service or if you have any questions, please call 0116 305 2695 or email libraries@leics.gov.uk



DONALD CAMPBELL LANDSCAPES
Experienced in all aspects of hard landscaping, fencing and general garden maintenance.
Husbands Bosworth area
Tel. No. 07817 381 244



BEGLEY'S
Established 50 Years
GENERAL JOINERY SPECIALISTS

Wooden Windows and Doors
Porches
Conservatories
Carpentry & Building

Free estimates
All items can be viewed at Shearsby Workshop

Tel: 0116 2478755 (day)
01858 880569 (eve)
Email: andybeg@hotmail.co.uk



Happy Feet
Registered Foot Care Specialist

- Toe nail cut
- Corns
- Verrucas
- Ingrown toe nails
- Hard dry skin
- Fungal nails

Home appointments
07842 266575
www.happyfeetmidlands.com