

HOME RUN

Whilst much of the infrastructure of the country ground to a halt with the coronavirus lockdown, and struggled to get back on its feet, the construction industry was soon back to fairly near normal business.

In Bosworth, the new homes development on Welford Road soon had workers back on site, although availability of materials and external services slowed the recovery for a while. The scheme, of 20 three and four bedroom homes and 10 'affordable' units is being built on what was once the village sports field and, when the Parish Council was approached to offer suggestions for names for the roads, they looked back on the history of site.

After consultation with the Historical Society, the names put forward for consideration were Kemp Drive and Trolley Close - both names from the village's cricket heritage that reflect the site's previous life. This was noted in the previous naming of the adjacent Knights Close development; the Knights being another village dynasty that supported the cricket team. Baptist Kemp [*Ed. Baptist was his Christian name...*] was for over 60 years the local veterinarian and farrier and lived variously at Caldicott House on Kilworth Road and at Vine House, High Street, from where he administered to the many local hunting lodges and livestock farms in the lush pastures of the upper Welland Valley.

Kemp also owned land around the village to supplement his veterinary income, employing a bailiff to oversee the management. His holding included the field where the Welford Road council houses were built in the 1930s, and the adjacent field - the field that is presently being developed.

The Trolleys were a large local family and keen supporters of the village cricket team over many years, Jim and Jack Trolley apparently being particularly good opening batsmen!

PLANNING FOR THE FUTURE

The government has laid out, in a recent White Paper, proposals for the biggest shake-up of planning and development law in over 70 years. The White Paper does not go into detail on what shape any reforms might take, but it does suggest that the input of local communities may be drastically reduced.

Communities were encouraged to produce Neighbourhood Plans - hailed as 'blue-prints' for how the community wanted itself to look in the future, as part of the government's push for devolved governance and localism. Now it looks as if some of the local control, especially around where and how development takes place, that was promised, is to be over-ridden by new rules that will designate land under three vague categories of growth, renewal and protected.

Worryingly, it also looks likely that local communities won't have any influence in this categorisation process and that a key feature of the Neighbourhood Plan, to allocate preferred sites for development, will be removed.

On the face of it, the proposals threaten to sell communities down the river on the back of creating wealth by home ownership as we claw our way back to prosperity. For Bosworth, already identified by developers as a growth area, this may mean more housing on previously discounted sites. We envisage the developers busily sharpening their pencils in readiness!

Husbands Bosworth Neighbourhood Plan, composed by villagers, is stuck in the final stages of its adoption by the local authority - its progress halted by covid-19. Watch this space, as they say...

POST RESTANTE

Travellers straying across the county border into the wilds of Welford at the end of 2018 will probably have noticed the sad demise of Postman Pat.

Pat (and his black and white cat...) was created from a convenient willow tree stump by former Bosworth resident, Harry Middleton, with the help of a friendly chainsaw artist, and welcomed visitors at the entrance to Welford for over 30 years.

Sadly, Pat finally succumbed to the elements in the winter of 2018 and, despite being propped up a number of times, took his last tumble and was cremated with all due pomp last summer. Pat was very sorely missed, but thanks to the support of the local community and public subscription, a newly sculpted Pat, and his black and white cat, has recently been erected on the site of the demised landmarks, to hopefully welcome travellers for many years to come!



BUGLE POSTBAG

A number of reports of fly-tipping in the area have come into *Bugle* HQ recently. There have always been problems, especially in out-of-the-way areas, such as Mill Lane and the situation has no doubt been compounded by the restrictions on access to the County Council waste sites. Residents are advised that it is also illegal to dump green waste, which could contain toxins and poisonous weeds and should be properly composted. If you do come across any fly-tipping on the highway or grass verge you can report it to Harborough District Council at: www.harborough.gov.uk/report-fly-tipping. Do not remove any items from a fly-tip - HDC will investigate the rubbish and examine any evidence found.

POLICE FILE



SPOT THE SIGNS OF BANK CARD 'HARVESTING'...

- Someone claiming to be a bank official or the police informing you of fraudulent activity on your account, or that your card has been compromised and needs to be surrendered.
- The caller asks for personal information to 'verify' your identity. They may give you readily-available personal details, such as your address to 'prove' their claim.
- The scammers may offer you the opportunity to call them back to reassure you that they are genuine. The number they give you is usually false in the expectation that you won't try it. Alternatively the call-back is answered by the criminals.
- They may ask for the PIN and possibly the security code, which will allow them to carry out 'card-holder not present' transactions on-line.
- They try to offer you peace of mind by arranging for a courier to pick up the card from you to save you the trouble of having to go to your bank or local police station.
- Even without any information, once they have your card the criminals can use its 'contactless' facility to make payments up to £45.

IGNORE ANY ATTEMPTS TO GET YOU TO RELEASE YOUR CARD.

This is a simple, unsophisticated scam but catches out thousands of unwary people every year, especially the most vulnerable.

If you are approached in this manner hang up and check with your bank as soon as possible, either in branch or by a trusted phone number.

Be wary of scams relating to TV License renewals. A flurry of reports have recently come to the attention of *Action Fraud* where householders have received what appear to be TV licence reminders, which look convincing with the appropriate logos and layout. They explain that the automatic renewal system has not been able to process the householders payment due to a technical problem and asks the licence-holder to renew immediately or risk criminal proceedings, by clicking a link.

To determine where a link goes, hover your mouse pointer over it. A genuine link will show the address in the browser's address bar starting with: www.tvlicensing.co.uk. You can check the details of your licence at any time by visiting <https://www.tvlicensing.co.uk/check/tvlicence> and logging into your account. All you need is your licence number and post code.

THE BUGLE TEAM

Editor:

Melvyn Forman
10 Church Lane Tel: 880281
Email: bosworth_bugle@talk21.com
Treasurer & Advertising:

Ralph Horton
18 Highcroft Tel: 880526

Contacts:

Mike & Sylvia Price
3 Highcroft Tel: 880902
Jo Horton
18 Highcroft. Tel: 880526
Frances Smith
10 Butt Lane Tel: 880225
Penny Mattock
9 Fernie Court Tel: 881140
Heather O'Connor
16 Fernie Court Tel: 880165

Postal Subscription & distribution:

Melvyn Forman Tel: 880281
Email: bosworth_bugle@talk21.com

www.husbandsbosworth.info

COPY DEADLINE
15th OF THE MONTH
PRECEDING PUBLICATION

POLICE FILE

Your Local Neighbourhood Policing Team:
Sgt. 26 Ryan Coleman
ryan.coleman@leicestershire.pnn.police.uk
PC 1261 Andy Cooper
andrew.cooper1261@leicestershire.pnn.police.uk
PC 2192 Paul Farrar
paul.farrar@leicestershire.pnn.police.uk
PC 2872 James Day
james.day2@leicestershire.pnn.police.uk
PCSO 6569 Peter Willson
peter.willson@leicestershire.pnn.police.uk
PCSO 6056 Jay Bellamy
jay.bellamy6056@leicestershire.pnn.police.uk
Or go to:
www.leics.police.uk and use the **CONTACT** US link at the bottom of the page.

CRIMESTOPPERS:

0800 555111

ACTION FRAUD:

www.actionfraud.police.uk
0300 123 2040

Springfields



P.C. BUILDING SERVICES LTD



Complete building service
Specialist in new build
Quality renovations
& Extensions

Tel/Fax 01858 881202
Email: pcbuildserv@btinternet.com

Walton Grange, Bosworth Road
Walton, Lutterworth, Leics LE17 5RW

BOSWORTH IN FOCUS

AT HOME IN BOSWORTH

Since 1980 monetary inflation has been 255%. That's an extraordinary amount of value leached out of the value of money, especially when you consider that wages have only gone up 43% in that time. Over the same period house prices have increased by 1010% - 24 times the rate that wages have increased.

This ratio changing so much for the worse may explain why people are turning to renting more frequently than before. The negative effect has been somewhat offset by decreases in mortgage interest rates - without these low mortgage rates I'd speculate that home ownership would be much lower.

To give some perspective, both the cost of 1st class stamps and petrol have increased above inflation over this time period, rising 483% and 353% respectively, whilst those of a pint of milk and a loaf of bread sit below inflation, jumping only 159% and 191%. Oddly the only thing rising anywhere near the rate for house prices is beer, the price of which has climbed nearly 700% in the last 40 years!

Like gold, property has historically been a great place in which to put your money in order to beat the 'stealth tax' that is inflation. Will this continue into the future? There are political and economic pressures that point to both rising and falling prices and it does seem that the government has taken a turn against private landlords in favour of corporate ones, so owning multiple properties as an investment strategy isn't the attractive proposition that it once was, unless you do so via a company. The only thing that seems certain is that the rate of house price increases versus those of wage increases is not sustainable.

mark.baldwin@exp-uk.co.uk

Editors's Note: Last month we inadvertently changed Marks's name to Mike. We're pleased to put the record straight!

WILD ABOUT BOSWORTH

Nuthatch - *Sitta Europaea*

Due to their habit of wedging nuts into a crevice then hammering at them with their beaks to reach the kernel nuthatches were formerly called "nut hackers". In common with most bird species, they have three forward and one backwards pointing toe. This morphology is used to identify them as 'passerines' by ornithologists. They happily move up, down, along or under branches in their search of concealed insects, which are their favoured food, though they are omnivorous and do also eat nuts and seeds.

Nuthatches are considered sedentary birds; in that, they rarely move far from their home territories - typically less than a kilometre. It used to be that they

were seldom seen outside south-eastern England, but over the last century, there's been a gradual drift northward, in all probability due to the increased popularity of garden feeders. Their preferred nesting sites are abandoned woodpecker holes, though they will use nest boxes and natural occurring cavities. If the entrance hole is too large, the female plasters it with mud to lessen its size and protect against predators. A second defensive strategy they employ is to furnish a deep layer of wood flakes in the bottom of the nest, which they use to hide the eggs and chicks when the nest is unattended. These precautions are essential, as they are preyed on by several chick-eating species. Curiously, quite often by greater spotted woodpeckers whose abandoned nest sites they've appropriated!

The female undertakes nearly all the work in the nest, but the male helps with feeding duties after the chicks have hatched. While they are a monogamous species, a genetic study in Germany found one in ten chicks were sired by a male from an adjoining territory. However, this doesn't mean British females are as flighty... *Mike Chanter*



SCOUTING IN BOSWORTH

For the time being 1st Kilworth Scouts will continue to meet online in order to keep both the children and our leaders safe. The first week back Cubs and Scouts baked sweet or savoury muffins, which was a great success, and Beavers held in a virtual sleepover. Some children are reluctant to take part in the online meetings - it can be an intimidating experience! So, we are happy for them to take part with their camera turned off and send us pictures of what they've created or achieved. When the situation improves we will let families know of new procedures we will be putting in place. As always, many thanks for your support and for encouraging your children to continue being a part of Scouting and 1st Kilworth. We are also still looking for adult volunteers to join, especially for our Beavers section. To volunteer a few hours a week makes a big difference in these young people's lives. If you're interested, please email: kilworth@southleics-scouts.org.uk. Without new help, we won't be able to run the Beavers section from next January. *Charles Lauder Jnr.*

STEFAN the HANDYMAN

- Quality woodwork
- Painting
- Tiling
- DIY
- Repairs
- Home maintenance, and lots more...

Not sure it's a job for Stefan? Just pick up the phone and ask!

01858 881775

StefantheHandyman@outlook.com

Facebook: @StefantheHandyman



OUR BOSWORTH POP-UP WILL REMAIN OPEN UNTIL THE END OF NOVEMBER
Saturday & Tuesday mornings
8.30am - 1.00pm
6 Welford Road
Special orders taken: Call Christian
07855 955460

SCHOOL REPORT

HUSBANDS BOSWORTH C. of E. PRIMARY SCHOOL Head Teacher Alan Eathorne

We welcomed our children back to a new school year after what has been a most unusual of time for the school. Having cared for the children of our key worker families, alongside Lubenham and St. Andrew's schools during the full lockdown period, it was lovely to finally reopen our own school building. We have had several year groups in, whilst providing learning for those who were still at home. It has been great to hear the voices of children once again filling the classrooms and outside spaces as we all adjust to our 'new norms'. In July we said goodbye to our Year 6 leavers in a different way and wish them all the best in the future as we know they will all do brilliantly! Our children have already started to enjoy learning about their new topics. Foundation Stage are learning about themselves and the other children in their class. Years 1 and 2 have started to learn about the Great Fire of London. Years 3 and 4 are exploring the Stone Age and Years 5 and 6 are learning about World War II and the effect it had on Husbands Bosworth. If you have an interesting family story about the war please get in contact with the school - I'm sure Mrs. Vickers and her class would love to hear about it. Call the office on 880212 or email: office@hbs.learnat.uk and we will get back to you.

Alan Eathorne

NEW STARTERS FOR AUTUMN 2021

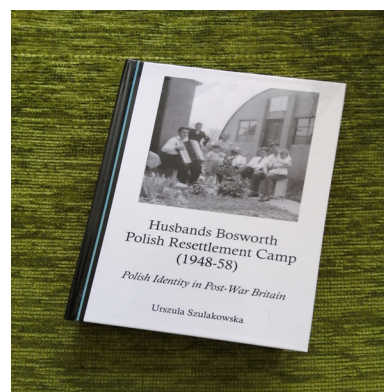
Under current COVID 19 guidance we are unable to hold an open morning for new starters in EYFS as we would do normally. So, we are offering 10 minute time slots for you to come and visit our wonderful school, outside of school hours. Initially we have planned for tours to take place on Friday October 9th 3.30pm - 4.30pm and Saturday, October 10th 9.30am -10.30am. Please contact the office on 01858 880212 to book an appointment. If the dates are inconvenient we will be happy to arrange another date/time.

BYGONE BOSWORTH

Images from the Historical Society's Archive Collection

The story of the enforced displacement of the Poles from their homelands during World War II is a tragic tale of moral and political thuggery, the consequences of which have largely been erased from our history books as an embarrassing interlude in Britain's post-war diplomacy. Polish servicemen, who had overcome extreme adversity to fight tirelessly alongside the Allies in all theatres during the war, had the rug summarily pulled from under them when much of their country was given up freely to the Communists at the end of hostilities. The displaced Poles and their families, who had seen immense deprivation on inhuman scales in the slave-camps of eastern Russia, had no recognisable country to return to and were passed around the Middle East - Palestine, Persia, Iraq - and the colonies in Africa, Asia, the West Indies and North America like political pawns.

Eventually resettlement agreements were cobbled together, ostensibly to relieve the labour shortages, especially in Britain, where many were housed in temporary camps, usually redundant military sites. Much of the former RAF base at Husbands Bosworth was requisitioned in this manner by the National Assistance Board in 1948 to house displaced Polish families, and local employment was arranged for the able-bodied. By 1950 Bosworth's Polish enclave housed over 500 people, had its own church, school, and recreation room.



The Historical Society has recently acquired a copy of *Husbands Bosworth Polish Resettlement Camp (1948-58)*. This story of life in the camp, the political background that led to the situation and the subsequent integration of the Poles in this country is vividly told and interlaced with historical information and first hand accounts by the author, Urszula Szulakowska, who grew up in the camp.



The camp church. Baroque-style backdrops painted onto drapes.

If anyone would like to borrow this book please email: m.forman@talk21.com or call 880281.

N & S A Fisher – Wigston

Spa Lane
Wigston, LE18 3QD
www.fisherswigston.co.uk
Tel. 0116 288 1101



We offer:

New Ford and Used Vehicle Sales
Ford Factory Trained Technicians
All Makes Servicing & M.o.T
FREE Ford Assist – AA Home Start & European Cover on all Ford Servicing
FREE Collection & Delivery Service

COMPLETE CAR CARE

Accident repair specialist
Bodywork, dent, scratch and stone-chip repair
Servicing, alloy refurbishment, welding
MoT repair
Valeting, full body polish
Parking sensors, tyres & exhausts, etc. fitted
Call Ben on 01858 880404
bencompletecarcare@outlook.com

MORE BOSWORTH IN FOCUS

SYLVIA'S RUN

Our own Sylvia Price will be running the London *Virtual* Marathon, a carefully calculated 26.2 miles (42.195 km), around Husbands Bosworth and the surrounding villages on Sunday October 4th.

Starting at the *Park Run* venue at Welland Park in Harborough at 9.00am, Sylvia aims to pass thorough Bosworth at around 11.00am to 11.30am, doing a 'lap of honour', taking in most of the roads in the village before heading to North Kilworth and onward, to finish at *SB Health and Fitness Centre*, Ladywood Works, Leicester Road, Lutterworth.

Sylvia will be raising money for her chosen charity, *Guide Dogs*, so please chuck something, pounds or pence, into the bucket as it rattles past!

SULBY GARDENS

Sulby Gardens Apple Event, Thursday October 8th and Friday 9th.

Cheered on by the excellent response we had to our open afternoon in August, we are pleased to announce that our Apple Event, in aid of the National Gardens Scheme, will run on Thursday, October 8th from 1.45pm to 4.00pm and on Friday October 9th from 11.00am to 3.45pm.

This will enable a total of six, hour-long slots, bookable in advance on the NGS website as before at: ngs.org.uk/garden-tickets and booking will be available from Monday, October 5th from around 10.00am. Entry is £5 per head, children free. For spur-of-the-moment visitors, entry at the gate by £5 cash per head or text donation to NGS will be available, if space permits.

As well as our lovely apple display, there will be new season's apple juice for sale, plus apple cakes and other produce, including Sulby honey, as well as Katy Dynes' beautiful Sulby-themed greetings cards. We do hope to welcome you here.

Please note, no change will be available so please bring a good selection of notes and coins! Alternatively donations by text to NGS should be available.

Unfortunately, there will be no refreshments and no toilet facilities available.

Sulby Gardens, Sulby, Northants NN6 6EZ [*Sulby is between Welford and Sibbertoft, and only 2 miles from Husbands Bosworth*]

Alison Lowe

WEATHER LOG

AUGUST 2020

Highest temp: 35.2°C on 12th

Lowest temp: 7.6°C on 4th

Air frosts: 0

Rainfall Total: 118mm (4.65")

Wettest day: 36mm (1.42") on 16th

Rain days: 15

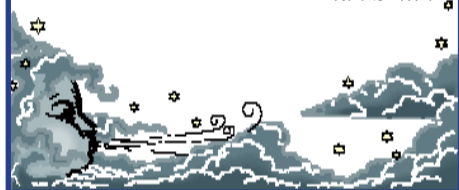
Dry days: 16

Snow: 0

Total sunshine: 182 hours

Cummulative Rain 2020: 579.4mm

Brian Smith



SURGERY NEWS

Debbie Warner, whom many will know, has been a nurse at Bosworth Medical Centre and the old surgery for many years. Debbie retired in September after administering countless vaccinations, drawing gallons of blood and much more! Always with a ready smile and a little light banter to relax her 'victim', she will be sadly missed.

On behalf of the patients of Bosworth and the surrounding villages, we at the *Bugle* would like to thank Debbie for looking after us in the past and wish her all the best in her retirement.

We hear from the Medical Centre managers that Debbie will not be directly replaced, but we will be sharing the nurses from Harborough Medical Centre.

Bosworth Bulbs

local bulbs delivered to your door.



@bosworthbulbs

bosworth.bulbs@gmail.com



Spring bulbs, daffodils, hyacinths, tulips, snowdrops, narcissi & crocus
Free local delivery

BEGLEY'S

Established 50 Years

GENERAL JOINERY SPECIALISTS

Wooden Windows and Doors

Porches

Conservatories

Carpentry & Building

Free estimates

All items can be viewed at Shearsby Workshop

Tel: 0116 2478755 (day)

01858 880569 (eve)

Email: andybeg@hotmail.co.uk

Happy Feet

Registered Foot Care Specialist

- Toe nail cut
- Corns
- Verrucas
- Ingrown toe nails
- Hard dry skin
- Fungal nails

Home appointments
07842 266575

www.happyfeetmidlands.com

FLOWERS BY HEATHER

Husbands Bosworth



Flowers and floral arrangements for any occasion

Call for a free consultation. Many years experience in the floral industry.

Follow or like me on Facebook.

Call me on 07773 063063

PARISH COUNCIL NEWS

Report of the Parish Council Meeting held virtually on Tuesday, September 1st 2020.

Present: Full Council and no members of the public.

Minutes of the Previous Meeting were approved.

Matters Arising

□ Clerk advised Council that he had been informed that the Conkers event had been cancelled, due in part to insurance challenges and on-going problems maintaining a steering group.

Finance

- Current bank statements were presented and approved.
- Clerk outlined problems with bank signatory authorisation.
- Approvals were granted for invoicing corrections relating to contract work.
- Approval was agreed for payment of fees relating to a Clerk Training Course.

Scout Lease

□ No progress had been made on this matter but communication relating to Scouts' use of the Playing Field and the avoidance of conflict in use with other users of the outdoor areas had been received.

Playing Field / Dog Walk

- Council agreed to draw up Terms of Use for the Playing Field and Sports Pavilion. A dedicated page on the Parish Council website would be set up for bookings.
- Council agreed to provide a bench for the use of dog walkers in the Dog Walk area.

Caretaker

□ A caretaker for the Play Area and Playing Field had been appointed, to start immediately. Duties are to include janitorial and key-holding duties at the Sports Pavilion.

Any Other Business

- Council authorised the provision of the new planter at the Bell Lane/Berridges Lane junction and three new general waste bins.
- Council noted hedges overhanging the footway adjacent to Firs Farm. Clerk to contact Leicestershire County Council.
- Concerns were raised about work being undertaken by the developers of the Welford Road site, which included work to the cemetery ditch. Clerk was asked to arrange a site meeting as soon as possible.
- Work to upgrade accessibility standards, refresh the Parish Council website and add a sports pavilion/playing field booking facility was agreed.

Next Meeting

□ The next meeting will be on Tuesday, October 6th at 7.30pm.

(Please note that this is a public meeting and will be held virtually on-line. Admission details are available on request from the Clerk.)

A full copy of the Minutes can be viewed or downloaded at: www.husbandsbosworthpc.org.uk or by request to the Parish Clerk.

PLEASE NOTE THAT DUE TO COVID-19 RESTRICTIONS THE PARISH OFFICE WILL BE CLOSED TO THE PUBLIC UNTIL FURTHER NOTICE.
Please email, or call and leave a message (ansaphone), for any matters relating to parish business. Contact details on this page.

WOODPECKER TREE SURGERY

All aspects of tree-work undertaken from dismantling large roadside trees to pruning and reshaping small garden trees.

We also offer a stump grinding service.

Professionally qualified and insured.

For free quotation and advice call

Chris on: 01858 434591

www.woodpeckertreesurgery.co.uk

SID REPORT

Readings from the Speed Indicator Device

High Street Easterly

Period: 19.08.20 - 26.08.20

Vehicle movements: 10646 Av./day: 1520

Average speed: 25.40mph

Highest recorded speed: 56mph

High Street Easterly

Period: 26.08.20 - 02.09.20

Vehicle movements: 12265 Av./day: 1752

Average speed: 25.09mph

Highest recorded speed: 56mph

High Street Easterly

Period: 02.09.20 - 09.09.20

Vehicle movements: 13911 Av./day: 1987

Average speed: 29.19mph

Highest recorded speed: 55mph

Welford Road outbound

Period: 09.09.20 - 16.09.20

Vehicle movements: 8025 Av./day: 1146

Average speed: 27.97mph

Highest recorded speed: 77mph

LOCAL OFFICERS

**Husbands Bosworth Parish Council:
Councillors**

Patricia Hobson (Chair) 880070
William Fletcher
Melvyn Forman
Jackie Fletcher
Laura Meridith
James Bolter

Parish Clerk

Derek Watson
2a Mowsley Road
H.B. LE17 6LR Tel: 881109

clerk@husbandsbosworthpc.org.uk

District Councillor

Amanda Nunn
a.nunn@harborough.gov.uk

County Councillor

Blake Pain

Tel: 01858 411021

blake.pain@leics.gov.uk

Member of Parliament

Neil O'Brien

Tel: 0207 2191802

neil.obrien.mp@parliament.uk

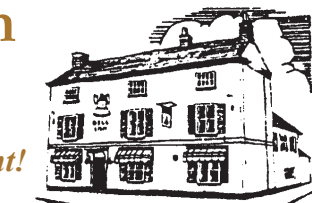
The Bell Inn

Husbands Bosworth

Tel: 01858 880967

Under NEW management!
**Welcoming back to your
community pub!**

KEEP SAFE



Vegan menu available

Booking recommended

Follow us on Facebook - HusbandsBosworthBell

CHURCH NEWS

All Saints Parish Church, Methodist Chapel & St. Mary's Roman Catholic Church

FROM THE RECTORY

How are you celebrating the seasons this year? Usually around this time we are looking forward to harvest, to conkers and welly-wanging, and enjoying the produce of our allotments and gardens. Yet this year, we are not able to do that together in the same way. Our celebrations for harvest in church have been at Knaptoft and with a picnic at Hothorpe Hall, with restricted numbers and which we have had to book for.

For some it is too soon to feel able to get back among friends as you are still being careful. So in order to celebrate the harvest and all the things we can thank God for, I invite you to send me pictures - of the flowers in your garden, the produce you have grown, the views that make your hearts glad, and I will share them in as many ways as I can with others - post them on Facebook, email them to as many as I have contacts for. Let us encourage one another in these uncertain times.

Despite the fact that we have a virus in our midst, which we haven't yet brought under control, we still live in a beautiful world, God is still good and will bring us through to a better place and the earth is still bountiful bringing forth its fruits in due season. We still have reason to celebrate the Harvest and the goodness we find in our world. So let's share the evidence we have of that - send me your pictures to lizbickley@btinternet.com

To kick it off here's a picture of some apples in the Rectory garden (scrumpers welcome if you can reach them!).

It's also a time when we can help others, so we are making a push to support the local foodbank with gifts of food or money, so that those suffering hardship can be supported. There is still a box at the Rectory door for any contributions you may like to make, or give me a call and arrange for them to be collected.

Take care and God bless. **Liz** ✝



CHRISTMAS FESTIVAL 2020

Due to covid-19 we are unable to hold our Christmas Festival in its usual format. So, we have come up with the idea of a Christmas Trail, over the weekend of **Saturday, December 5th and Sunday 6th**. Villagers will be invited to decorate a window or put up a display or tree outside their property, visible from the road. We will create a map of the locations and description of each display for people to follow around the village to view.

The maps will be purchased from the church, which will be open from 2.00pm to 6.00pm and where people can start and end the trail, with light refreshments for sale and a cake raffle. For those outside the village or unable to display at their homes there will be space available to put up a tree or display, preferably solar or battery illuminated, in the church grounds.

There is no set theme this year - just anything Christmassy (simple or elaborate..). The event will end on the Sunday evening, with an Advent Service if covid restrictions at the time allow. Entry forms will be included in the November issue of the *Bosworth Bugle* but those interested are asked to register their interest as soon as possible to enable planning for the event to commence.

Please contact: Belinda 07889075750, Wendy 07734422548, Di 880741 or Rev. Liz 880351.



JLR Bespoke Property Renovations are an experienced and trusted Project Management and Construction team based in North Kilworth, Leicestershire.

If you have a project or idea in mind, please don't hesitate to contact us either by phone or via our website.
Tel: 07866 741 261 (Jason Wright)
www.jlrbespokeproperties.com

✝ CHURCH SERVICES ✝

Hexagon Benefice

BENEFICE SERVICES

[all at 10.30am, all communion]

October

4th Bruntingthorpe
11th Shearsby
11th Hus. Bosworth (Baptism)
18th Arnesby
25th Theddingworth

November

1st Mowsley
11th Shearsby

Churchwarden:

Diana Jones 880741

Rector:

Liz Bickley 880351

St Mary's Roman Catholic Church

Contact:

Robert Constable-Maxwell 880361

Father Owen O'Neil 462359

CAUSEWAY COFFEE

Despite the restrictions of covid-19 the Causeway Charity continues to dispense goodwill and tasty fancies every month to the group members.

The group administers funds, generated by ancient community charity bequests, the Bosworth Charities, dating back as far as the 17th century, to any senior villager living alone and retired.

The group usually organises a monthly coffee morning, to which those identified as eligible are invited. However, during the present restrictions the group have, instead, been distributing much-appreciated small hampers of goodies - bakery items, fancies and floral tributes - to recipients... A much-appreciated wave of goodness in an ocean of uncertainty! If you know of any villager, retired and living alone who would perhaps like to be included please call Jackie on 880910 or Heather on 880165.

F&W Plumbing & Heating Services Ltd

22 Elmcroft Road, North Kilworth, LE176HX

Bespoke bathroom & kitchen design and installation
All types of wall and floor tiling
Hot and cold water systems
Gas-fired boiler installations and system upgrades
Unvented hot water systems
Gas Safe and Bepec registered

Contact Jason on 07866741261

Email: jayspanner@btinternet.com

www.fandwplumbingandheatingservices.co.uk

Over 30 years experience in designing and installing contemporary and traditional kitchens and bathrooms

Project manage personally with all associated trades for a co-ordinated high quality finish with minimum disruption

FORTHCOMING EVENTS

Tuesday October 6st

Parish Council meeting, 7.30pm

(This meeting will be conducted as a virtual meeting - see Parish Council website for details)

Saturday Dec.5th & Sun. 6th

All Saints Christmas Trail

LOCAL PLANNING NEWS

The following applications have been submitted to Harborough District Council:

- 20/01258/TCA Works to tree, 2 Waterworks Cottages, Waterworks Way
- 20/01259/TCA Works to tree, 5 Butt Lane
- 20/01278/FUL Erection of a two storey side extension and entrance porch, Cotehill Farmhouse, Station Road
- 20/01332/LBC Installation of two replacement windows to front elevation, 11 Church Street

Recently determined applications:

- 20/00475/LBC Erection of outbuilding, erection of a single storey side extension link, removal of roof and installation of replacement slate roof, raising of roof on rear lean-to, installation of 3 dormer windows to rear elevation and one dormer window to side elevation, external alterations, replacement windows and internal alterations (revised scheme of 04/01322/LBC, 12/01070/LBC and 19/00637/LBC) 32-34 Bell Lane *(Approved)*
- 20/00840/PCD Discharge of Conditions, details of front door, new windows and rooflights, scheme of investigation) and construction method of 19/00160/FUL 31 High Street *(Approved)*
- 20/01024/FUL Erection of single storey rear extension and internal alterations 1 Townend Close *(Approved)*
- 20/01062/FUL Erection of a single storey rear extension 4 Fernie Court *(Approved)*
- 20/01067/FUL Erection of a two storey side extension 19 Lammas Close *(Refused)*

Current applications may be inspected during normal working hours at the Council Offices, The Symington Building, Adam & Eve Street, Market Harborough.

Planning applications and other aspects of local government can now be viewed on-line at www.harboroughonline.co.uk

MetalMatters is a recycling information initiative managed by the Aluminium Packaging Recycling Organisation (Alupro) and supported by the metal packaging and recycling industry and leading brand owners. The scheme aims to increase public awareness and encourage improvements in metals recycling.

It is estimated that the average household discards 600 food tins, 380 drinks cans, 182 foil trays and 27 empty aerosols annually (almost 1200 items). These items can all be recycled endlessly. For example, making drinks cans from recycled material saves up to 95% of the energy needed to make them from raw materials, and the savings are compounded every time they are recycled.

A pilot trial by Orkney Islands Council in 2017 targeted all 11,000 households and directly resulted in an increased capture of 13.5 tonnes of aluminium and steel packaging from the kerbside, an uplift of more than 19% and a whopping 44.5% at the Council's five household Waste and Recycling Centres. The programme promoters believe that there is no reason why this response can't be achieved nationwide, given more publicity. **DO YOUR BIT - RECYCLE!**

MOBILE LIBRARY

We're back! Calling on the third Friday of each month.

The mobile library has returned but not in the usual format. Borrowers will need to notify the library service in advance what sort of books are required and a selection of that subject will be packed in a carrier bag, already booked out to you, for you to collect. Returned books will be dropped off in a box outside the van.

For help with the service or if you have any questions, please call 0116 305 2695 or email libraries@leics.gov.uk

STOPS & TIMES

School, Welford Road:	10.25am - 11.25am
Berridges Lane:	11.30am - 12.10pm
Butt Lane:	12.15pm - 12.50pm



- RENOVATION
- EMERGENCY REPAIRS
- ROOFING
- EXTENSIONS
- BUILDING MAINTENANCE
- PLASTERING

**CALL GRAY INMAN-HALL : 07938217578
OR EMAIL : INMAN-HALLBUILDING@HOTMAIL.COM**

ARMOUREDADDON
Military Museum
One of the Largest Collections of
WWII Vehicles and Militaria in the Midlands.

Our under cover collection includes post war vehicles, Main Battle Tanks, as well as an excellent selection of other American, German and British vehicles. With interactive displays and lots of things to see. Visit on a game day (Saturday, Sunday or selected Wednesday—April to October) and you will get to see some of our vehicles driving around.

01858 880 239

Chat to us Online
www.armourededdon.co.uk

Office hours Monday to Friday 0900hrs—1700hrs