

BRIGHT SPARXS...

The Gliding Centre is once again hosting its spectacular fireworks display, featuring the famous *AeroSPARX* pyrotechnic aerobatic display team. The evening, in aid of charity, will also include choreographed fireworks displays by the UK Fireworks Championship winning team, Leicester-based *Celestial Fireworks*. Truly an international class evening... and right on our doorstep. There will be food and produce stalls, children's rides and a grand Christmas Fair of local crafts for festive present ideas.

Gates open at 2.30pm and will close to new arrivals at 4.15pm to allow *aeroSPARX* to take off...with the awesome aerial display starting at 4.40pm! [Editor's Note: Google 'AeroSPARX at Husbands Bosworth' to see a preview!]

This is a 'drive-in' only, pre-booked event and spaces will be strictly limited for safety reasons. For more information and to book go to: <https://www.theglidingcentre.co.uk/>



QUEEN'S COUNCIL...

The Parish Council is looking at ways to support the Queen's Platinum Jubilee in June 2022. Already planned is a lighting of the village beacon on the Playing Field and open-air celebrations on the field. If village groups have any ideas for further celebrations to mark the event please contact the Parish Clerk on 881109 or email: clerk@husbandsbosworthpc.org.uk



event please contact the Parish Clerk on 881109 or email: clerk@husbandsbosworthpc.org.uk

VEGGIE-MIGHT...

The fine vegetable and produce display at the village's Horticultural Show, which we featured in last month's *Bugle*, set us off surfing the 'net' for superlatives in the veggie world.

UK grower, John Atherton had a bumper year when he exhibited at the Malvern Show in 2017, showing both the world's longest parsnip at 21ft 5.76in (6.55m) and longest carrot at 20ft 5.86in (6.245m).

A plethora of other extremes can be found in the Guinness Book of Records... The heaviest marrow weighed in at 206.5lbs (93.7kg) and the biggest onion at a mere 18.7lbs (8.5kg), whilst the longest runner bean hung out at 4ft 3in (130cm) and the longest cucumber at 3ft 6in (107cm). As we are in Halloween, the spookiest record must go to the heaviest pumpkin, grown by Belgian, Mathias Willemijns, which tipped the scales at 2624.58lbs (1,190.49kg) in 2016...

Surely some records have stood for long enough and are ripe for being toppled? Take the tallest sunflower - it measured a paltry 30ft 1in (9.17m) and was grown by German, Hans-Peter Schiffer in 2014. And a sunflower with a head diameter of 32.25in (82 cm) was grown by Emily Martin of Canada as far back as 1983, for goodness sake... Come on Bosworth!

PARISH OFFICE

The Parish Office, 2a Mowsley Road, will re-open to the public from Monday, November 1st. To ensure a safe environment for all parties, meetings with the Clerk or Councillors will be by appointment only for the time being. Appointments can be made by emailing clerk@husbandsbosworthpc.org.uk or by telephone on 881109.

Revised office hours are: 8.45am to 1.00pm Monday, Tuesday & Thursday, and 8.45am to 4.00pm on Wednesday. Closed Fridays. Anyone with any urgent matter of parish business can still contact the Clerk by email or telephone as detailed above.

RECYCLING LOCAL

Following the recent Great Big Green Week, groups in Welford and Sibbertoft have joined forces to try to recycle more.

For some time *Sustainable Sibbertoft* has been spearheading the collection of items for recycling that prove difficult or uneconomic to process through local authorities, these have included medicine blister packs. They have also collected aluminium cans for the charity, *Helipads for Hospitals*. As a result of their research during Big Green Week, Sibbertoft will be creating new local collection points to take snack wrappers, pens, oral care and make-up/personal care products, which they will be partnering with recycling experts, Terracycle.

Welford will also be joining the recycling effort and coordinating with Sibbertoft, collecting the same items to make best use of the combined volumes and effort.

We at the *Bosworth Bugle* think it would be great if Husbands Bosworth would like to get involved in these worthwhile and innovative recycling initiatives.

If there is anyone from Bosworth who would like to pick up this recycling baton and join this worthy local group please contact either Caroline Jackson (carojackson2@aol.com) or Bill Wright (wright22@skynet.co.uk).

THE GREAT
BIG GREEN
WEEK

BUGLE POSTBAG

The Parish Council recently wrote to Leicestershire County Council regarding the clearance of the illegally dumped waste at The Firs Farm on Welford Road and the possibility of a site meeting with Council officers. This is the LCC response.

"We have had difficulty with formulating the best way forward to assess the scale of the problem at Firs Farm and begin a clear up operation. As mentioned previously we have engaged Summers Inman to oversee the process and they have provided a brief of what should happen now and this has been sent to the Environment Agency and Harborough District Council environment officer for any comment and these have now been received. We now expect contractors to set up on site on the 1st November to then start to take samples of the various materials deposited there illegally to ascertain what it is and estimate the amounts involved. This will lead us to a plan on how it can be safely removed.

From the information we have from the Environment Agency it does appear that this is likely to be mainly household and builders waste but of course the survey will confirm this. As we are now starting works on site I do not feel that our presence at your meeting is necessary."

POLICE FILE



There has been a rise in thefts of catalytic converters around the county in recent months. Catalytic converters are targeted by thieves because of the precious metals they contain. Leicestershire Police have issued the following crime prevention advice:

- *Keep your vehicle parked in a garage if possible*
- *Park close to fences, walls or a kerb with the exhaust being closest to these*
- *Consider CCTV/ PIR security systems or lighting where you park your vehicle*
- *If having work done on your car exhaust system consider having the securing bolts welded*
- *Many manufacturers now sell security covers for retro-fitting*
- *Consider having your catalytic converter forensically marked and put stickers in the windscreen to say this has been done.*
- *Use car parks with a Secured Car Park sign for added levels of security*
- *Noisy gravel on your drive can help deter a would-be thief*

For more crime prevention advice, please visit their website at www.leics.police.uk
As always, remain vigilant and report any suspicious incidents. If a crime is in progress call 999 immediately.

MOBILE ROAD SAFETY CAMERA DATA September 2021

		Visits	Offences
August			
	A4304 Lubenham Hill Market Harborough	3	18
September			
	A4304 High Street Husbands Bosworth	1	8
	A4304 Kilworth Road Husbands Bosworth	2	2
	A4304 Station Road North Kilworth	1	5

THE BUGLE TEAM

Editor:

Melvyn Forman
10 Church Lane Tel: 880281
Email: bosworth_bugle@talk21.com
Treasurer & Advertising:

Ralph Horton
18 Highcroft Tel: 880526
Contacts:

Mike & Sylvia Price
3 Highcroft Tel: 880902
Jo Horton

18 Highcroft. Tel: 880526
Frances Smith
10 Butt Lane Tel: 880225

Penny Mattock
9 Fernie Court Tel: 881140
Heather O'Connor

16 Fernie Court Tel: 880165
Postal Subscription & distribution:

Melvyn Forman Tel: 880281
Email: bosworth_bugle@talk21.com

www.husbandsbosworth.info

COPY DEADLINE
15th OF THE MONTH
PRECEDING PUBLICATION

POLICE FILE

Your Local Neighbourhood Policing Team:
Sgt. 26 Ryan Coleman
ryan.coleman@leicestershire.pnn.police.uk
P.C. 2178 Malc Roberts
Malcolm.Roberts@leicestershire.pnn.police.uk
PC 2192 Paul Farrar
paul.farrar@leicestershire.pnn.police.uk
PC 2872 James Day
james.day2@leicestershire.pnn.police.uk
PCSO 6569 Peter Willson
peter.willson@leicestershire.pnn.police.uk
PCSO 6056 Jay Bellamy
jay.bellamy6056@leicestershire.pnn.police.uk
Or go to:
www.leics.police.uk and use the CONTACT US link at the bottom of the page.

CRIMESTOPPERS:
0800 555111

ACTION FRAUD:
www.actionfraud.police.uk
0300 123 2040

Thomas LePreux
Head Mechanic

01858 437446

office@foxautomotive.co.uk

FOX
Automotive
Total Vehicle Maintenance

Interim / Full Services - MOT - Repairs & Maintenance - Alignment - Tyres & Exhausts - Original Manufacturer & Aftermarket Parts



Specialist in VW & Audi Located in Theddingworth FREE pick up & drop off within 10miles

01858 571122

Old Barn Farm, Welford Road,
Husbands Bosworth, LE17 6JL

Email:
info@foxlandrover.co.uk



**YOUR RURAL
LAND ROVER SERVICE CENTRE**

BOSWORTH IN FOCUS

WILD ABOUT BOSWORTH

Enchanter's Nightshade *Circaea Lutetiana*

Usually, when researching these little articles, I end up with an embarrassment of riches and I struggle to edit them to a printable length. However, this month's subject is distinguished by its lack of notable characteristics!

Though it's not poisonous, it's considered inedible. As for its medicinal properties, in 1597 John Gerard noted *'There is no use of this herb either in physic or surgery'*, and it doesn't appear in Culpeper's *Complete Herbal*, 1652.

It's not even a nightshade (*Solanaceae*) and is, in fact, a member of the evening primrose family (*Onagraceae*). It thrives in dark, moist conditions and patches of it can be found at the eastern end of the Bosworth canal tunnel. Its inconsequential white flowers grow on stalks attached to a central stem, technically called a *raceme*. The flower's two petals are deeply grooved, giving the bloom a quatrefoil shape. Its fruit has burrs that stick to fur and clothing and serve to disperse the plant. Often, it seems, with the malicious intent of germinating in our gardens, and once it's established, it's extremely difficult to eradicate.

In ecological terms, the only interactions I have unearthed is with the Emperor Hawk-moth and Enchanter's Cosmet moth, whose larvae mine its leaves. However, I have seen no evidence of damaged plants in the Bosworth area. *'Circaea'* in the binomial name comes from Circe of Greek mythology, who was renowned for her knowledge of potions and herbs. Reputedly, she had the power to transform her enemies into animals, and it's said, Enchanter's Nightshade was in the potion she used to turn Odysseus's companions into swine! Also, there are tales that in the Scottish Highlands, the plant was used in a potion surreptitiously given to male lovers as a performance enhancer! Though there are no records of it being used in Leicestershire...

Mike Chanter



AT HOME IN BOSWORTH

Two points of note within the housing market this month:

Firstly, there were 13 buyers for every property listed in the UK in September. Over the last five years, the only time demand has exceeded supply to a greater extent was in January 2020 following the general election of December 2019.

The number of new prospective buyers in September 2021 was 57% above the five-year average between 2015 and 2019. In fact, the figure was only 13% below last September's figure, two months into the stamp duty holiday and during a period of post-lockdown exuberance!

Sales instructions remain around the five-year average, but the homes are selling more quickly, creating the kind of imbalance seen in some other parts of the economy.

Secondly, over the same 2015-2019 five-year period the total value of homes in Britain has increased by 20%, or £1.6trillion! Of that massive increase, over a third has been in the last year alone. The total value of homes in Britain currently stands at £9.2 trillion. £8.2 trillion is held within 23.5 million privately-owned homes, with the remainder held within the five million social homes.

To put these numbers into perspective, the total value of Britain's homes is more than four times the entire Gross Domestic Product of the UK and over four times the value of the entire FTSE100 listed companies.

mark.baldwin@exp.uk.com

SCOUTING FOR BOSWORTH

We're happy to report that during this past month 1st Kilworth has obtained four new Beaver Leaders and a new Group Secretary - our utmost thanks to those parents who have stepped forward to take on these roles.

The last role we are still looking to fill is Group Chair. Our current Chair, Norman Byrd, announced his intention to leave the position earlier this year and must leave it by Christmas. We appeal to parents to help us fill this vacancy.

Norman shares his thoughts on being Chair for the past six years: *'It has been enormously rewarding being our group's Chair. Each Scout group needs a committee known as the Executive to function. This is composed of a Chair, Treasurer, Secretary and Group Scout Leader. I think that to bring new ideas and enthusiasm to the group, the positions should change over time. I'm looking to step down and would be delighted to discuss what chairing the Exec entails. In reality the commitment is as much or as little as you'd like to bring to the role. The minimum time commitment isn't onerous. It has been good fun being a small part of the group, especially as all three of our children have been involved from Beavers through to Scouts. The leaders remain the main stay of the group, the Exec exists to support them in delivering the very best of scouting to the children and young people who attend.'*

If you are interested in taking on this role, please get in touch.

Charles Lauder, Jr, & Norman Byrd



INMAN HALL BUILDING & PLASTERING
FINE BUILDING AND PLASTERING SERVICES

- RENOVATION
- EMERGENCY REPAIRS
- ROOFING
- EXTENSIONS
- BUILDING MAINTENANCE
- PLASTERING

CALL GRAY INMAN-HALL : 07938217578
OR EMAIL : INMAN-HALLBUILDING@HOTMAIL.COM



DONALD CAMPBELL LANDSCAPES
Experienced in all aspects of hard landscaping, fencing and general garden maintenance.
Husbands Bosworth area
Tel. No. 07817 381 244

SCHOOL REPORT

HUSBANDS BOSWORTH C. of E. PRIMARY SCHOOL

Head Teacher: Alan Eathorne

Recently we celebrated harvest by holding a special assembly. Our families gave generously to the collection that will go to support the great work that the Lutterworth Food Bank are doing in supporting our communities.

The children have all been on a trip this half term. Half of the children visited Beacon Hill and half of them visited Park Farm Woods. At these venues, an outdoor and adventure expert led the children through a series of activities, as we look to inspire our children to enjoy being active. We hope that the children will take what they have learnt and use it to enjoy the village's amazing green spaces.

If you or somebody you know is interested in bringing their children to the school, then please contact the office (01858) 880212 and we will happily arrange for you to come and look around our amazing school.

For our writing extracts this month Class 2 have shared their poems. They have been thinking about verbs, adjectives and adverbials and using this to create poems about different colours. I hope you enjoy them.

Blue is waving sea in a storm. Blue is soaking water in the sea. Blue is enormous sky watching everybody. Blue is beautiful seas home to humpback whales.

Toby

Green is smooth grass growing in the meadow. Green is prickly crocodiles living in the stream. Green is scary lizards living in the wild. Green is prickly leaves hanging on the trees.

Wilf

White is sweet marshmallows sitting on the table. White is beautiful lambs on the farm. White is fluffy clouds in the sky. White is pretty snowflakes falling from the sky.

Fearne

BYGONE BOSWORTH

Images from the Historical Society's Archive Collection

The Historical Society's Facebook page has recently generated some comment with artefacts that we've aired on the page from the Society's Archive Collection. We also hold a vast array of images in the Collection that have been sent to us, of artefacts that relate to Bosworth or that have been loaned to us. These two pictures are of items that relate to two topics that we've recently looked at on the page.

The propelling pencil image, sent to us some time ago, reminds us that the Fernie Lodge Hotel, which stood on the site of Fernie Court, had many incarnations during its troubled life - from Georgian hunting lodge through Hillsome House Hotel, The Bosworth Lion and L'Auberge - as it valiantly attempted to keep up with changing trends in hospitality. One can imagine the pencil, and a pad of L'Auberge headed notepaper, would have been found in every room, for the use of the select guests that the establishment obviously hoped to attract.



The penknife was loaned to us by Robert Constable-Maxwell and was given as a token to those flyers who attended one of his father, David's, famous 'fly-ins' at Bosworth Hall in the 1950s and 1960s. Alongside David's friends and business associates, including helicopter pioneer Tony Everard of the Everard brewing dynasty, many notables on the aviation scene at the time came along.



The registration numbers, G-ARBO and G-ARUJ, relate to David Constable-Maxwell's Piper PA24 aircraft and a Piaggio P166 belonging to Charringtons United Breweries Ltd, (of which David was a director) - the hosts of the 1966 event.

N & S A Fisher – Wigston

Spa Lane

Wigston, LE18 3QD

www.fisherswigston.co.uk

Tel. 0116 288 1101



We offer:

New Ford and Used Vehicle Sales

Ford Factory Trained Technicians

All Makes Servicing & M.o.T

FREE Ford Assist – AA Home Start & European Cover on all Ford Servicing

FREE Collection & Delivery Service



**LanGuard
Vegetation Management**

Safeguarding the Environment

*All aspects of vegetation management, landscape
maintenance and weed control*

Urban, highway, sports, industrial and domestic

**LanGuard Ltd • Packs Hill Farm • Station Road • Husbands
Bosworth • Lutterworth • Leicestershire • LE17 6JN**

Tel: 01858 880 898 • Fax: 01858 880 720

Email: info@languard.co.uk

MORE BOSWORTH IN FOCUS

BOSWORTH GARDENS

November is the perfect time to collect leaves for your compost bin, relocate dormant plants and divide vigorous perennials. Find some winter colour with hardy chrysanthemum, pansies, cyclamen, and evergreen shrubs. Also enjoy planning spring displays, whether it's a potted bulb 'lasagne' or planting crocus and snowdrops into your lawn.

Flowers

- Lift and store dahlia, begonia, and gladioli.
- Remove the foliage and leave to dry out, knocking off any soil and store in dry sand or soil over winter
- Protect roses from wind rock by cutting them to one third their height and remove debris and fallen leaves from the roses base to deter blackspot
- Mulch perennials to protect from the cold
- Raise pots on feet or bricks to prevent waterlogging

Vegetables

- Sow green manure or spread manure on beds to improve structure and fertility
- Improve a bed with organic matter for overwintering garlic
- Now is the time to prepare a perennial veg bed for rhubarb and asparagus crowns
- Sow peas and sweet peas, protect in a greenhouse or cold frame
- Cut back strawberries, taking off runners and weeding between the plants

Trees

- Now is the best time to plant bare root trees and hedges. Check the growth heights and research species that can benefit wildlife like crab apple, rowan, birch or hazel
- Apply grease bands to your fruit trees to prevent winter moth infestations in Spring.
- Prune apple and pear trees up until Feb – Leave plum tree pruning until midsummer to prevent silver leaf fungus

Lawn Maintenance

- Clear fallen leaves
- Aerate your lawn by inserting a garden fork at regular intervals to let water and air circulate. Brush sharp sand into the holes to improve drainage
- Give it a last cut, setting your mower blades high
- Edge your lawn now and enjoy a neat appearance all winter

Wildlife

- Clean bird feeders and baths and keep them topped up
- Clean out nest boxes so birds can take shelter
- Hedgehogs will be nesting now but can sometimes be seen walking between nest sites

Hannah Edge

Bosworth Bulbs

CAUSEWAY COFFEE

The next meeting of the Causeway Coffee Morning group will be on Friday, November 12th. We meet at the Sports Pavilion on the second Friday of the month, 10.00am till 11.30am and our meetings are specifically aimed at those in the parish living alone and retired. For more information please contact me on 880165.

Heather O'Connor

ART GROUP

Bosworth Art Group is a small, friendly and informal group of arty minded souls meeting on alternate Tuesday mornings, 10.00am to 12.00 in the Sports Pavilion, Kilworth Road. Meetings are on a pay-as-you-go basis, £2.50 per session to cover room hire and coffee.

The group is self-tutored and all mediums and skill levels are welcomed. Interested? Come along and try a session...

Art Group dates for November are: Tuesdays, 9th and 23rd.

Call 880281 for more information.

Melvyn Forman

VILLAGE LUNCH

Bosworth Village Lunch is Back!!

The next Village Lunch will be on Tuesday, November 23rd at Kilworth Springs Golf Club, South Kilworth Road, North Kilworth. We meet at 12.30pm to eat at 1.00pm.

The cost of the two-course meal, including tea/coffee and mints is £11.50 per person. Payment can now be made by card at the bar or cash at the door. *(We customarily take a tip at the table!)*

Please call me on 880668 if you would like to book a place, to arrange transport to the venue or for any more information.

Village Lunch is a great place for those new to the area, retired or living alone to catch up with old friends and make new friends in a warm and friendly atmosphere.

The Village Lunch Christmas Party will be on Wednesday, December 15th. More details later.

Janice Staples



Our under cover collection includes post war vehicles, Main Battle Tanks, as well as an excellent selection of other American, German and British vehicles. With interactive displays and lots of things to see. Visit on a game day (Saturday, Sunday or selected Wednesday—April to October) and you will get to see some of our vehicles driving around.

01858 880 239

Chat to us Online
www.armourededdon.co.uk

Office hours Monday to Friday 0900hrs—1700hrs

HAPPY FEET



Registered Foot Care Specialist

- Toe nail cut
- Corns
- Verrucas
- Ingrown toe nails
- Hard dry skin
- Fungal nails

Home appointments
07842 266575

www.happyfeetmidlands.com

'JJ's Kiddycare'



***OUTSTANDING* Ofsted grading**
*** FREE Pre-school sessions for 2, 3 & 4 year olds**
*** Full Day Care 0-5yrs**

Situated on a farm site between South Kilworth and Welford

*** Breakfast and After School clubs. (4-14years)**
*** Holiday Clubs during all Northants & Leics school breaks**

Tel no. 01858 575642
www.jjs-kiddycare.co.uk
 Email: admin@jjs-kiddycare.co.uk



PARISH COUNCIL NEWS

Report of the Parish Council Meeting held on Tuesday, 5th October 2021.

Present: Five Councillors and one visitor.

Apologies received and approved from Cllr. Forman.

Visitors' Questions

- The visitor raised a question in relation to the allotments.

Minutes

- Minutes of the Ordinary Parish Council Meeting held on Tuesday 7th September 2021 were approved and signed as correct.

Matters Arising

- Clerk confirmed an application had been submitted to the Members Highway Fund.
- Cllr. Meredith advised that the Grant Application for the Skate Park was being processed.
- Council noted that the cemetery Wildflower Area had been cleared.
- Clerk confirmed that initial discussions had taken place with Security Companies in relation to improving security at the Millennium Pavilion.

Finance

- Current bank statements, cashbook reconciliation and half year review were noted.

Planning Overview

- The Clerk presented the September/October planning application summary.

Section 106 Grant

- After initial discussions around available funding, timings, and criteria for the Community Facilities grant, it was agreed that it would be more productive to have a dedicated workshop session in relation to this matter.

Parish Office

- It was agreed that the Parish Office would re-open from Monday 1st November. Initial meetings would be by appointment only and the space will also be set out to enable social distancing.
- It was agreed to replace the existing desk with an office desk, drawers, and desk light.

Christmas Tree

- Council accepted the presented quote to site a Christmas Tree in the churchyard and to supply a lighting string for the village hall.

Pavilion

- It was agreed to share costs with North Kilworth FC, to deep clean and repaint the pavilion kitchen.
- After discussion, it was agreed to site a recycling bin at the Sports Pavilion, to be emptied on a fortnightly basis.
- With the failure of a promised quote for patching the roadside hedge, it was agreed to seek a second quote.

RoSPA Report

- The annual report found only some minor recommendations in the Play Area. The Skate Park however, does need further remedial work which is a result of the nature and age of the structure.
- It was agreed to replace the two open waste bins in the play area with larger, closed bins with recycling facilities.

Village Speed Restriction Measures

- Cllr Bolter requested agreement from the Council to review options for reducing driving speeds in the village.

Firs Farm

- It was agreed to request a face-to-face meeting with a LCC representative to air concerns from councillors and parishioners.

Quarry Operations

- After discussion it was agreed to request a meeting with the landowner and the operator, to receive an update on current developments.

Cemetery Wall Repair

- It was agreed to source quotes for repairing the damaged cemetery wall.

Queen's Platinum Jubilee Celebrations

- It was agreed to defer discussions on this subject until the next Parish Council Meeting.

Next meeting

- The next meeting will be an Ordinary Parish Council Meeting on Tuesday 2nd November 2021 at 7.30pm at the Sports Pavilion.

A full copy of the Minutes can be viewed or downloaded at: www.husbandsbosworthpc.org.uk or by request to the Parish Clerk.

SID REPORT

Readings from the Speed Indicator Device

Leicester Road

Period: 22.09.21 - 29.09.21

Vehicle movements: 6184 Av./day: 883

Average speed: 32.86mph

Highest recorded speed: 62mph

High Street westerly

Period: 29.09.21 - 06.10.21

Vehicle movements: 11007 Av./day: 1572

Average speed: 26.25mph

Highest recorded speed: 51mph

High Street westerly

Period: 06.10.21 - 13.10.21

Vehicle movements: 11407 Av./day: 1630

Average speed: 26.08mph

Highest recorded speed: 54mph

High Street easterly

Period: 13.10.21 - 20.10.21

Vehicle movements: 13252 Av./day: 1893

Average speed: 25.49mph

Highest recorded speed: 61mph

F&W Plumbing & Heating Services Ltd

22 Elmcroft Road, North Kilworth, LE176HX

Bespoke bathroom & kitchen design and installation
All types of wall and floor tiling
Hot and cold water systems
Gas-fired boiler installations and system upgrades
Unvented hot water systems
Gas Safe and Bepec registered

Contact Jason on 07866741261

Email: jayspanner@btinternet.com

www.fandwplumbingandheatingservices.co.uk

Over 30 years experience in designing and installing contemporary and traditional
kitchens and bathrooms

Project manage personally with all associated trades for a co-ordinated high
quality finish with minimum disruption

COMPLETE CAR CARE

Accident repair specialist

Bodywork, dent, scratch and stone-chip repair

Servicing, alloy refurbishment, welding

MoT repair

Valeting, full body polish

Parking sensors, tyres & exhausts, etc. fitted

Call Ben on 01858 880404

bencompletecarcare@outlook.com

CHURCH NEWS

All Saints Parish Church & St. Mary's Roman Catholic Church

ALL SAINTS CHURCH

Midweek Services in the Hexagon Benfice continue at 10.00am, every Wednesday. The usual pattern is to start and end the service with hymns, only gospel reading and no sermon. There is an optional short period of reflection on the reading - silent or light discussion and we ask the congregation for whom to remember in our intercessional prayers. Everyone is welcome to join us in our friendly and informal service and have a cup of tea or coffee afterwards.

Our Remembrance Service on Sunday, November 14th will commence at the War Memorial, Husband's Bosworth at 10.45am, followed by a service in church at 11.00am in church.

Stephen ✠

ST.MARY'S NEWS

Our Mass on Remembrance Sunday (14th November) will be at 9.30am to enable congregation members to attend the service at the War Memorial in the village.

We have six people preparing to be confirmed and received into the Catholic Church. The Bishop will visit to celebrate the confirmation on the First Sunday of Advent

It is lovely to see more villagers joining us at St. Mary's - all are welcome!

Future dates for your diary:

December 12th 3.00pm Carol Service

December 24th 10.00pm 'Midnight' Mass

December 25th 10.30am Christmas Mass

Father Matthew ✠

ALL SAINTS FLOWER ROTA

November

Heather O'Connor

PARISH NOTICES

Terry Wilks

Formerly of Mowsley Road

Died October 17th 2021

Jean Hankin

of Welford Road

Died October 21st 2021

Aged 84 years

R.I.P.

✠CHURCH SERVICES ✠

Hexagon Benefice

BENEFICE SERVICES

November

7th 10.30am Comm. Thedd.

14th REMEMBRANCE SUNDAY
10.45am (11.00am in church) HB

21st 10.30am Comm. Arnesby

28th 10.30am Comm. Mowsley

December

12th 10.30am Comm. B'thorpe.

19th 10.30am Comm. Thedd.

25th 10.30am Christmas Comm. HB

26th No service

Warm and friendly
mid-week communion every
Wednesday 10.00am HB

St Mary's Roman Catholic Church

Contact:

Robert Constable-Maxwell 880361

Fr. Matthew Pittam 01788 833547

E:matthewpittam@yahoo.co.uk

Father Matthew Pittam

Priest of the Personal Ordinariate of Our

Lady of Walsingham

St Joseph's Monks Kirby and St Mary's

Husbands Bosworth

01788 833547

<https://husbandsbosworthcatholic.org.uk>

FLOWERS BY HEATHER

Husbands Bosworth

Now taking all orders for Christmas
Door Wreaths, Table Arrangements
and gifts.

I am also running a wreath-making
workshop in the Village Hall on
November 25th

Please contact me for more details on
07773 063063 thanks



HAIR BY LYNNDY

Award winning hair stylist & colour specialist

Instagram Facebook

"Now welcoming everybody to my hair studio in Husbands Bosworth for cuts, colours, blow-dries & wedding hair"

Appointment only
07852 508736

lynndy@hairbylynndy.com

BEGLEY'S

Established 50 Years

GENERAL JOINERY SPECIALISTS

Wooden Windows and Doors
Porches
Conservatories
Carpentry & Building

Free estimates
All items can be viewed at Shearsby Workshop

Tel: 0116 2478755 (day)
01858 880569 (eve)
Email: andybeg@hotmail.co.uk

FORTHCOMING EVENTS

Tuesday, November 2 nd	Parish Council meeting, 7.30pm Sports Pavilion
Friday, November 12 th	Causeway Coffee Morning, 10.00am - 11.30pm Sports Pavilion
Tuesday, November 9 th	Art Group, 10.00am - 12.30pm Sports Pavilion
Sunday, November 14 th	REMEMBRANCE SUNDAY
Friday, November 19 th	Mobile Library (PLEASE NOTE - There will be no December visit; loans will be carried over)
Tuesday, November 23 rd	Art Group, 10.00am - 12.30pm Sports Pavilion
Tuesday, November 23 rd	Village Lunch, Kilworth Springs Golf Club, 12.30pm
Thursday, November 25 th	Heather's Wreath-making workshop, 7.30pm VH.
Sunday, November 28 th	Village Hall Christmas Fête
Tuesday, December 7 th	Parish Council meeting, 7.30pm Sports Pavilion
Sat. December 11 th /Sun. 12 th	All Saints Church Christmas Trail (<i>more details later</i>)
June 2 nd - 5 th 2022	HM The Queen's Platinum Jubilee 4 day holiday weekend

LOCAL PLANNING NEWS

The following applications have been submitted to Harborough District Council:

- 21/01596/FUL Erection of a single storey side extension, 7 Knights Close
- 21/01708/FUL Erection of a replacement agricultural building, agricultural barns off Sibbertoft Road
- 21/01717/FUL Erection of a first-floor rear extension, installation of solar PV panels to the rear roof slope, 29 Bell Lane
- 21/01743/TCA Works to trees (fell), 2 The Green
- 21/01775/TPO Works to tree (HDC TPO 197), 21 Fernie Court
- 21/01776/TCA Works to trees (fell), Bosworth Hall, Theddingworth Road
- 21/01787/FUL Erection of porch, conversion of garage to habitable accommodation and installation of cladding and render, 11 Highcroft

Recently determined applications:

- 21/01543/VAC (*Approved*) Erect 3 det. houses (res. matters of 17/01400/OUT including detail of access, appearance, landscaping, layout and scale) Variation of condition, of 19/00504/REM & Appeal APP/F2415/W/19/3242313 to substitute house types, land off Broad Lane
- Current applications may be inspected during normal working hours at the Council Offices, The Symington Building, Adam & Eve Street, Market Harborough.*

Planning applications and other aspects of local government can now be viewed on-line at www.harboroughonline.co.uk

SITUATION VACANT

Evening Cleaner required, Marsh Drive, Husbands Bosworth, LE17 6PU

Monday to Friday 6.00pm to 8.00pm. 10.00hrs per week, £10.00p/hr. Wages of £433 paid calendar monthly.

Duties include vacuuming, mopping, dusting, polishing, emptying bins, cleaning toilets and kitchen areas and any other associated tasks as required. To apply please call 0845 269 1800 or visit our website www.opusclean.co.uk

MOBILE LIBRARY

The mobile library is returning to normal...

Borrowers will now be able to enter the library van and choose their own books, but for the time being are requested to wear face-masks.

For help with the service or if you have any questions, please call 0116 305 2695 or email libraries@leics.gov.uk

Stops & Times

School, Welford Road: 10.25am - 11.25am

Berridges Lane: 11.30am - 12.10pm

Butt Lane: 12.15pm - 12.50pm

VERY VINTAGE
OLD & NEW PERIOD FURNITURE

We are BACK!

Every Sunday | 10am - 1pm

Serving tea, coffee and cake. Come along for a browse.

Cote Hill Farm, Husbands Bosworth, Lutterworth, Leicester LE17 6JN
07973 295168 | www.veryvintage.co

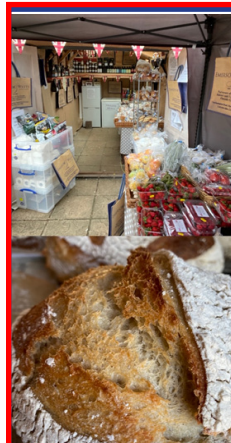
Springfields



**HIGH STREET
HUSBANDS BOSWORTH**

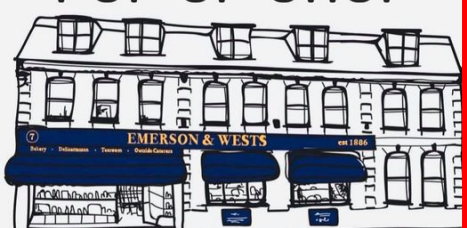
Opening times:
6.00am - 9.00pm
7 days a week
**FREE to use Cash
Dispenser**

National Lottery



REOPENING SATURDAY 6TH NOVEMBER

POP UP SHOP



HUSBANDS BOSWORTH

saturdays 9-1