

QUARRY PLAN

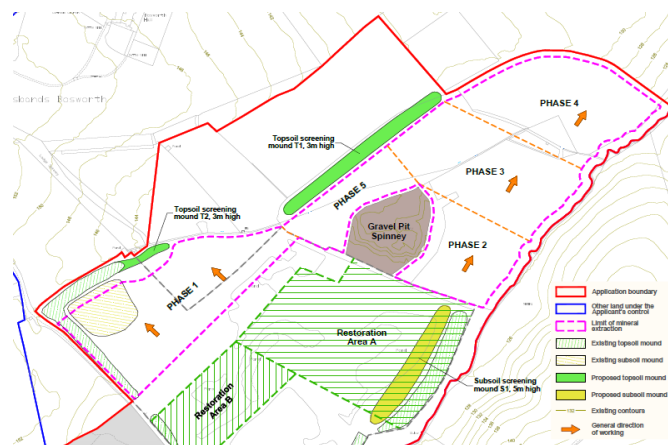
Husbands Bosworth quarry is set to reopen following a recent ruling by Leicestershire County Council's planners. The quarry, which ceased sand and gravel extraction in November 2019 will be worked alongside a landfill, conservation and reinstatement programme in five stages over the next eight years.

The planning committee heard that the proposals would generate between 250 and 300 traffic movements per day, similar to historical activity at the site, with the traffic split on the A5199 Welford Road likely to be 75% travelling north into Husbands Bosworth and 25% travelling south to the A14 through Welford. A number of objectors and Welford and Husbands Bosworth parish councils raised concerns about the impact on the roads and villages around the site.

As part of the permitted development a ready-mix concrete batching plant, to process aggregates on-site, will be installed, a mineral washing plant and the existing bagging plant will be allowed to continue operating.

Long-term plans for the site include re-establishment of the lost ancient field boundaries, planting a new woodland and reinstating open parkland plus the creation of small areas of open water.

A heritage-listed war memorial, which is dedicated to crewmen who were lost when a Wellington bomber from nearby RAF Husbands Bosworth crashed in 1943, will be relocated.



Proposed restoration programme

PICNIC IN THE PARK

Bosworth Hall will be hosting a grand Picnic in The Park evening to celebrate the coronation of King Charles III on Coronation Day, Saturday, May 6th.

Music and children's entertainment in the late afternoon will spill over into a community picnic and live music on the lawn of Bosworth Hall in the evening, to mark this special occasion.

BALLOT BOX

Voters in England voting in the local elections on Thursday, May 4th 2023 will need to show photo ID to vote at polling stations. Voter identification will require voters to prove their identity before being given their ballot paper.

Why is this necessary? In the current electoral system, there is potential for spurious voting at the polling station. All you need to do is say a name and address when you go to vote; no proof that this is you is required.

A broad range of documents, both in date and expired, will be accepted in order to prove your identity.

A wide range of photographic identification will be acceptable, including:

- Concessionary travel pass
- Blue Badge photo permit
- Blue Badge photocard
- Driver's license
- Ministry of Defence identity card
- UK issued Passport

Expired photographic identification will also be accepted if the photograph is of a good enough likeness to confirm the identity of the holder. If, for any reason you can't produce suitable identification, the local authority will issue a free Voter Card.

You will only need to show one form of photo ID, but it must be the original version and not a photocopy and the name should be the same name you used to register to vote.

If you don't have an accepted form of photo ID, you can apply for a free voter ID document, known as a Voter Authority Certificate. Go to: www.gov.uk or call the Electoral Registration team at Harborough District Council, Adam & Eve Street.

STAMP COLLECTION

A bit late in the day, Royal Mail, which before Christmas was eagerly promoting the imminent withdrawal of non-barcoded postage stamps, has had a re-think and extended the deadline for the death of the offending stamps.

According to Royal Mail they noted discontent amongst customers and recognised that customers needed more time to use up their remaining non-barcoded stamps. This tidal wave of discontent prompted them to extend the deadline for a further six months, meaning you now have until July 31st 2023 to use these stamps.

[Ed. Interestingly nobody seems to have told Royal Mail of their own magnanimous gesture...the Royal Mail website still says the non barcoded stamps are toast after January 31st... Is there any hope?]



BUGLE POSTBAG

From Patricia Hobson, Chair Husbands Bosworth Parish Council

Do you want to have a hand in making decisions about YOUR village?? Parish Council Elections are coming up in May, which means that the present Council's 4-year term of office ends and a new Council is elected. Due to the growth in the Parish, Husbands Bosworth has been allowed an increase in the number of Councillors, up from the present 6 to 7.

But what does the Parish Council actually do? Well, the Parish Council is responsible for a range of local facilities and services, including the Children's Play Area, Skate Park, Sports Pavilion and Playing Field (and car parks), Dog Walk, Parish Council website (husbandsbosworthpc.org.uk), parish office, allotments, cemetery, parish owned trees and hedges, grass cutting of verges and village greens, waste and dog bins. We also comment on planning applications and liaise frequently with other organisations, including making grant applications.

In order to deal with all this we meet formally 11 times per year to discuss projects, problems and to make decisions and employ two members of staff: a Parish Clerk and a caretaker.

We're a pretty friendly and approachable bunch of people who have joined the Council for a variety of reasons, but mainly to maintain and improve the lovely village of Husbands Bosworth, where we feel lucky to live.

WOULD YOU LIKE TO JOIN US? You don't need any formal qualifications, just a desire to help the community - training and guidance will be given.

If you'd like to know more about what we do, and how you could be involved, why not come along to one of our Parish Council meetings? The next two are on Tuesday 7th February and Tuesday 7th March at 7.30pm in the Sports Pavilion, Kilworth Road. All our meetings are open to the public and we would be very pleased to see you. Alternatively, you can talk to the Parish Clerk or any Councillor at the office [see list of Local Officers, p.6] or if you meet us out and about. We very much look forward to seeing you soon.

POLICE FILE



To contact your Dedicated Neighbourhood Team (DNT) online, use the quick and simple online contact tool - Search *Lutterworth Police*. You will be asked a few questions to make sure your query gets to the right place.

BEAT SURGERIES

Note for your diaries

Members of the local police beat team will be available to discuss any policing matters and crime issues that you may have, and give crime reduction advice at our monthly beat surgeries on the dates, times and places below.

18/02/23 12:00 - 13:00 Ullesthorpe Garden Centre
19/03/23 11:00 - 12:00 Market Square, Lutterworth



THE BUGLE TEAM

Editor:

Melvyn Forman
10 Church Lane Tel: 880281
Email: bosworth_bugle@talk21.com
Treasurer & Advertising:

Ralph Horton
18 Highcroft Tel: 880526

Contacts:

Mike & Sylvia Price
3 Highcroft Tel: 880902

Jo Horton
18 Highcroft. Tel: 880526

Frances Smith
10 Butt Lane Tel: 880225

Penny Mattock
9 Fernie Court Tel: 881140

Heather O'Connor
16 Fernie Court Tel: 880165

Postal Subscription & distribution:

Melvyn Forman Tel: 880281
Email: bosworth_bugle@talk21.com

www.husbandsbosworth.info

COPY DEADLINE
15th OF THE MONTH
PRECEDING PUBLICATION

POLICE FILE

Market Harborough & Lutterworth Police

Dedicated Neighbourhood Team

Insp. Liz Perry

Sgt. Peter Nichols

PC James Day

PC Jason Rainbow

PCSO Alexander Caswell-Jones

PCSO Steve Adams

Market Harborough Police Station,
Fairfield Road,

Market Harborough,

0116 222 2222

harboroughandwigston.npa@leics.police.uk

CRIMESTOPPERS:

0800 555111

ACTION FRAUD:

www.actionfraud.police.uk

0300 123 2040

COMPLETE CAR CARE

Accident repair specialist

Bodywork, dent, scratch and stone-chip repair

Servicing, alloy refurbishment, welding

MoT repair

Valeting, full body polish

Parking sensors, tyres & exhausts, etc. fitted

Call Ben on 01858 880404

bencompletecarcare@outlook.com

FLOWERS BY HEATHER

Husbands Bosworth



Flowers and floral arrangements for any occasion

Call for a free consultation.

Many years experience in the floral industry.

Follow or like me on Facebook.

Call me on 07773 063063

BOSWORTH IN FOCUS

WILD ABOUT BOSWORTH

Snowdrops - *Galanthus Nivalis*

The name *Galanthus* comes from the ancient Greek *gala* for 'milk' and *ánthos* for 'flower'.

Snowdrops flower before the vernal equinox; March 20th or 21st in the Northern Hemisphere. This photograph from the village's Millennium Wood was taken early in 2021. As the saying goes, 'The Snowdrop, in purest white array, first rears her head on Candlemas Day.' This association led to them decorating churches and to their alternative name - Candlemas Bells.

A biologist would describe them using the polysyllabic phrasing, 'perennial herbaceous bulbous monocot plants'. When seeds of flowering plants germinate, depending on species, they produce one or two seed leaves, called cotyledons, and are termed monocot or dicot. Snowdrop seeds are covered with an oil-rich film known as an elaiosome, which is attractive to ants. Ants carry the fruits to their nests and feast on the elaiosome, leaving the discarded seeds to germinate and begin a new colony. However, the main method of snowdrop propagation is through bulb-splitting.

In common with tulips, crocuses, and daffodils, snowdrops are poisonous and should never be eaten. The herbalist, John Gerard knew them as 'bulbous violets', and in his 1597 work, he wrote: 'Touching the faculties of these bulbous violets we have nothing to say, seeing that nothing is set down hereof by the ancient writers, nor anything observed by the modern, only they are maintained and cherished in gardens for the beauty and rareness of the flowers, and sweetness of their smell.' A sentiment shared by gardeners to this day.

Mythologically, snowdrops are a symbol of hope. After Adam and Eve were expelled from the Garden of Eden, Eve was about to give up hope that winter would ever end, when an angel appeared and transformed some snowflakes into snowdrop flowers, showing that spring was on the way...

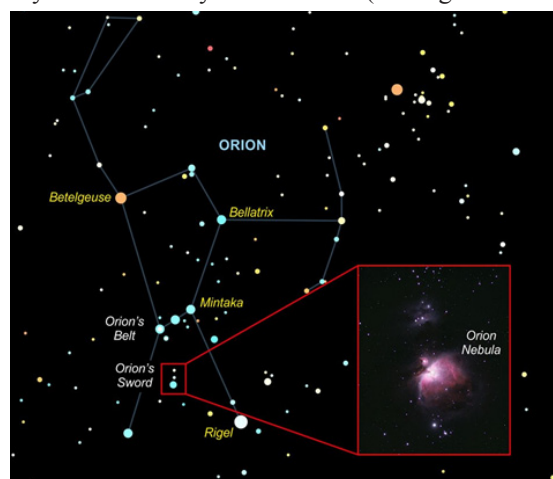
Mike Chanter



BOSWORTH SKY AT NIGHT

Astronomy from your Backyard - The Constellation Orion

Choose a clear night, wrap up warm and venture outside to look at the stars. Take a few minutes for your eyes to become accustomed to the dark and take in the wonder of the night sky - it's quite good here in Husbands Bosworth. Take a pair of binoculars if you have them, but they are not essential. This month we are looking at the winter constellation, Orion, the Hunter. Orion is one of the most familiar sights in the winter sky and in February it is due south (looking towards Welford) at 8.00pm in the middle of the month. [See the star chart.]



The star Betelgeuse (*pron.* beetle-juice) is distinctly red in colour. It is a red giant star nearing the end of its life and is expected to end its evolution with a supernova explosion within the next 100,000 years! It is between 10 and 20 times the mass of our Sun and 500 to 600 light years away. [A light year is the distance light travels in a year (quite a long way!)]. Rigel, a blue-white supergiant star, really is huge; it is seventy times bigger than our Sun and approximately 300,000 times as luminous.

The highlight of Orion is the Orion Nebula or M-42, [See inset], just visible to the unaided eye as a fuzzy patch in the Hunter's sword. Binoculars or a small telescope transform M-42 into a greenish-white nebulosity. Glowing ionised hydrogen gas energised by hot young stars produce the nebula's light that we see. The moon is full at the start of the month and washes out the dark sky, so view Orion from the second week of February. Also look for the planet Venus appearing as a dazzling white 'evening star' after sunset in the western sky (towards Lutterworth). Venus, Jupiter and a young crescent moon will be very near each other soon after sunset on 22 February.

Mike Price



PLEASE CONTACT THOMAS
FOR A NO OBLIGATION FREE QUOTE:
07525064220
twlandpservices@outlook.com
www.twlandpservices.com

Offering a wide range of Hard & Soft Landscaping:

- Fencing & Repairs, Sleeper Work
- Driveway Installation & Maintenance
- Patio Installation & Maintenance
- All Bespoke Decking
- All Types of Timber Builds: Cabin, Shed, Stable, Pergola, Gazebo, Car Ports & Garages
- Drainage, Ponds & Water Features
- Ground Work, Foundations and Concrete Works
- Garden Maintaining & Clearance
- Tree & Hedge Pruning
- Turfing and Lawn Edgings
- Household Repairs & Maintenance

Over 15 years of approved Professional, High quality work.



JLR Bespoke Property Renovations are an experienced and trusted Project Management and Construction team based in North Kilworth, Leicestershire.

If you have a project or idea in mind, please don't hesitate to contact us either by phone or via our website.
Tel: 07846 741 261 (Jason Wright)
www.jlrbespokeproperties.com



SCHOOL REPORT

HUSBANDS BOSWORTH C. of E. PRIMARY SCHOOL Head Teacher Alan Eathorne

School closes - Friday, February 17th

Half Term - Monday, February 20th - Friday, February 24th

School reopens Tuesday, February 27th to Friday, March 31st

BYGONE BOSWORTH

Images from the Historical Society's Archive Collection

WOMEN IN HISTORY

Carole Lister of Bell Lane recently sent us this reminder of when the village had a WI. In 1980 the Leicestershire Federation of Women's Institutes invited county groups to enter a Drama Competition. Husbands Bosworth WI, for their part, entered a short play entitled, *Women in History*, which involved much research, rehearsals, costumes and music - the latter provided by Val Begley.

Amongst the famous women depicted were Boadicea, Queen Elizabeth I, Nell Gwyn, Florence Nightingale, Elizabeth Fry, Emily Pankhurst, Amelia Bloomer and Margaret Thatcher.

Four children also took part as minstrels to Queen Elizabeth. Each character had a special piece of music for their entrance, with amusing words to fit the historic woman!

Additional scenery included an ancient bicycle for Amelia Bloomer, which was borrowed from the Misses Marsh, an old chair for a throne for the Queen, a lamp for Florence Nightingale and a piece of railing for the Suffragettes! I remember that both Beryl Jones (Amelia Bloomer), and Hilda Carter (Margaret Thatcher) caused much hilarity...

Unfortunately the group didn't win the competition but were highly commended, and a couple of months later the revue was performed again for the village.

I was reminded of this by the sad passing of Brenda Brown recently, who was a wonderful Queen Elizabeth.



GREEN BIN CHARGES

Harborough District Council needs to ensure that the full costs of the green bin garden waste service continue to be met by those receiving the service, rather than using council tax payments from all residents to subsidise it. Rises in contractors' and other inflationary costs mean that from April 2023 the new annual subscription charge for the garden waste collection service will increase by £6, from £55 to £61. Garden waste collections run fortnightly from April to the end of November, commencing again in March, renewable for the April collection. Subscribers can dispose of loose green waste, grass cuttings, leaves, flowers, weeds, clippings, twigs and small branches, without the need to take these items to the tip.

Find out more about the garden waste collection service at: www.harborough.gov.uk/green-bin

Landfill rules for domestic seating including sofas, chairs and upholstery are changing

The Environment Agency has issued guidance regarding the disposal of Waste Upholstered Domestic Seating (WUDs) containing Persistent Organic Pollutants (POPs). From January 1st this waste will no longer be accepted at landfill and must be destroyed through controlled incineration. Harborough District Council is currently consulting on how this waste is collected and disposed/treated.

F&W Plumbing & Heating Services Ltd

Based in North Kilworth

- ▣ Bespoke bathroom & kitchen design and installation
- ▣ All types of wall and floor tiling
- ▣ Hot and cold water systems
- ▣ Unvented hot water systems

Contact Jason on 07866741261

Email: jasonfandw@hotmail.com

www.fandwplumbingandheatingservices.co.uk

Over 30 years experience in designing and installing contemporary and traditional kitchens and bathrooms

Project manage personally with all associated trades for a co-ordinated high quality finish with minimum disruption



P.C. BUILDING SERVICES LTD



Complete building service
Specialist in new build
Quality renovations
& Extensions

Tel/Fax 01858 881202

Email: pcbuidserv@btinternet.com

Walton Grange, Bosworth Road
Walton, Lutterworth, Leics LE17 5RW

MORE BOSWORTH IN FOCUS

CINEMA SCOPE

Welford Village Hall Flicks in the Sticks film evenings continue with *The Lost King* (2022) showing on Saturday, February 4th. *The Lost King* tells the story of Philippa Langley, the amateur historian, who, supported by her own intense research, (and the help of the lost king himself) overcame the scepticism of experts and academics to persuade archaeologists to dig in a Leicester car park for the remains of King Richard III. As we now know, in 2012, having been lost for over 500 years, the remains of the king were discovered on the very first day of the dig. The rest, as they say, is history... Starring Sally Hawkins as Philippa Langley and Steve Coogan as her ever-suffering husband, John.

Future dates:

Saturday, March 4th - *Top Gun Maverick*

Saturday, April 1st - *Ticket to Paradise*

CRAFT GROUP

The Craft Group meets on the second Wednesday of each month in the Committee Room of the Village Hall, 7.00pm to 9.00pm. This is a friendly and informal gathering where craft-minded people can pick up new ideas and practice their craft in a relaxed atmosphere away from the distractions of home life.

For details contact Gail on 880413.

CAUSEWAY COFFEE

The next Causeway Coffee Morning will be on Friday, February 10th, 10.00am - 11.30am at the Sports Pavilion.

Causeway Coffee Mornings are open to anyone who is retired and living alone in the parish. Come along for a cuppa, cake and chat...The group is warm, welcoming and friendly and meets on the second Friday of each month.

If you know of anyone living within the parish, who may be eligible please call either Heather 880165 or Jackie 880910.

HISTORICAL SOCIETY

The next meeting of the Historical Society will be on Wednesday, February 1st at 8.00pm, when we will be taking in the *'View from the Sharp End'* - a pilot's eye view of commercial aviation from turbo-prop to jet, by Peter Bugge.

Annual subscription is only £12.

Our meetings are also open to visitors - a door charge of £2.50 is requested, tea, coffee and biscuits included!

For our meeting on March 1st, Matt Beamish of University of Leicester Archaeological Department will update us on recent work, which has shed further light on the interpretation of the Wheler Lodge Neolithic causewayed enclosure - a nationally important archaeological site, and Bosworth's own Scheduled Ancient Monument.

ART GROUP

Bosworth Art Group is a small, friendly and informal group of arty minded souls meeting on alternate Tuesday mornings, 10.00am to 12.00 in the Sports Pavilion, Kilworth Road. Meetings are on a pay-as-you-go basis, £2.50 per session to cover room hire and coffee.

The group is self tutored and all mediums and skill levels are welcomed.

Interested? Come along and try a session...

Art Group dates for February are: Tuesdays, 14th and 28th.

For details call Melvyn on 880281.

AND THE WINNERS ARE...

A big thank you to everyone who entered our Festive Quiz. The judging panel have now completed their deliberations and again found that the entrants proved themselves as devious as the compiler and let us have some very creditable and close fought entries.

Our compilers version of the answers can now be found on the online *Bugle* page, www.husbandsbosworth.info but there were some equally correct alternative answers. Our sumptuous prizes will be delivered shortly!

The joint winners were the Swales and Lawrence families, who both scored maximum points.

VILLAGE LUNCH

The next Village Lunch will be on Tuesday, February 28th at Kilworth Springs Golf Club, South Kilworth Road, North Kilworth. We meet at 12.30pm to eat at 1.00pm.

The Village Lunch is a great place for those new to the area, retired or living alone to catch up with old friends and all the gossip, and make new friends in a warm and friendly atmosphere.

The cost of the two-course meal, including tea/coffee and mints is £12.50 per person.

Please call Janice on 880668 if you would like to book a place, to arrange transport to the venue or for any more information.

Next month's Village Lunch date: Wednesday, March 29th.

SCOUTING FOR BOSWORTH

For 2023, 1st Kilworth Scout Group are planning to get more involved in community activities such as a village litter pick, as well as helping to plant trees around Husbands Bosworth. Also on our to-do list is more fund-raising and to renovate the Scout Hut, both exterior and interior, hopefully with some village and parents' help.

As always, we heartily welcome volunteers in whatever capacity you would like to contribute. Of course getting involved with the individual sections, whether as an occasional helper or helping out each week, is much appreciated - we continue our search for a new Group Scout Leader. If interested, please get in touch: kilworth@southleics-scouts.org.uk or 07800 713090.

Charles Lauder, Jr



MARIE AINGE PHOTOGRAPHY

*NEW YEAR....
*NEW YOU....
*NEW LOOK....
*NEW IMAGES!

*Local Photographer taking
bookings*

Prices are from £55.

View Flickr.com

Contact 01858 880823

Email: aingel1@sky.com



**Emma Jane
WEDDINGS & EVENTS**

For all your wedding & event planning needs

We cater for private parties, marquee events and corporate gatherings.
Please contact us and let us help you.

W: www.ejweddingsandevents.co.uk
E: hello@ejweddingsandevents.co.uk
T: 07920 464555

PARISH COUNCIL NEWS

Report of the Parish Council Meeting held on Tuesday, December 6th 2022.

Present: Full Council, no members of the public

Minutes of the Ordinary Parish Council Meeting held on Tuesday 1st November and the Precept Meeting, held on Tuesday 22nd November 2022 were approved and signed as correct.

Matters Arising

- Correspondence from Bosworth Tots advised how Council's grant had been utilised
- Clerk advised that minor issues raised in the RoSPA play equipment inspection are to be reviewed by contractor
- LCC Treescape programme would provide free trees but there would be costs for collection, labour, and machinery

Finance

- November 2022 Expenditure Overview, Bank Statements and Cashbook Account Reconciliation were presented for noting

Planning Overview

- October / November planning application summary was presented and agreed as accurate

Financial Regulations - document approval

Council agreed to change the review date from July 2023 to July 2024

Pavilion Alteration & Section 106 Update

- A third quote had been received for the proposed work and has been submitted to HDC as part of our application

Parish Councillor Recruitment

- Clerk presented a draft of a proposed door-drop leaflet to be considered as part of the Councillor recruitment drive

Oak Tree - Lower Green

- Clerk confirmed that work to manage the fungal disease affecting the tree would be carried out on 10th January 2023

SHELAA - Community Response

- It was confirmed that HDC have a duty to regularly update assessments of potential development sites within the district but that any sites identified would still need to satisfy normal planning criteria

Any Other Business

- Clerk was asked to cost a replacement bin for the Harborough-bound High Street bus stop
- Complaints had been received relating to mud and obstructions in Broad Lane relating to the building site. Clerk was asked to refer this matter to LCC Highways
- Due to safety concerns relating to the Sports Pavilion roadside gate, it was proposed to approve the immediate replacement
- Clerk confirmed submission of an application for the provision of a grit bin on Marsh Drive. It was reported that the Clearway Road sign near Kemp Drive was not straight, and the Quarry entrance sign had also been knocked over.
- Clerk was asked to report damage relating to the Quarry Entry sign and also the Clearway sign on Welford Road to LCC Highways

Next meeting time and date

There will be an Ordinary Parish Council meeting held on Tuesday 7th February 2023 at 7.30pm at the Sports Pavilion

A full copy of the Minutes can be viewed or downloaded at: www.husbandsbosworthpc.org.uk or by request to the Parish Clerk.

SID REPORT

Readings from the Speed Indicator Device

High Street Easterly

Period: 14.11.22 - 21.11.22

Vehicle movements: 15280 Av./day: 2183

Average speed: 25.66mph

Highest recorded speed: 63mph

High Street westerly

Period: 30.11.22 - 07.12.22

Vehicle movements: 14117 Av./day: 2017

Average speed: 25.65mph

Highest recorded speed: 58mph

Welford Road

Period: 14.12.22 - 21.12.22

Vehicle movements: 6285 Av./day: 898

Average speed: 26.71mph

Highest recorded speed: 61mph

Kilworth Road

Period: 04.01.23 - 11.01.23

Vehicle movements: 10318 Av./day: 1474

Average speed: 33.00mph

Highest recorded speed: 60mph

Kilworth Road

Period: 11.01.23 - 18.01.23

Vehicle movements: 10855 Av./day: 1551

Average speed: 33.21mph

Highest recorded speed: 64mph

LOCAL OFFICERS

Husbands Bosworth Parish Council:

Councillors

Patricia Hobson (Chair) 880070
William Fletcher
Melvyn Forman
Jackie Fletcher
James Bolter
Heather O' Connor

Parish Clerk

Derek Watson
2a Mowsley Road
H.B. LE17 6LR Tel: 881109

clerk@husbandsbosworthpc.org.uk

District Councillor

Amanda Nunn
a.nunn@harborough.gov.uk

County Councillor

Blake Pain 01858 411021
blake.pain@leics.gov.uk

Member of Parliament

Neil O'Brien 0207 2191802
neil.obrien.mp@parliament.uk

N & S A Fisher – Wigston

Spa Lane
Wigston, LE18 3QD
www.fisherswigston.co.uk
Tel. 0116 288 1101



We offer:

*New Ford and Used Vehicle Sales
Ford Factory Trained Technicians
All Makes Servicing & M.o.T
FREE Ford Assist – AA Home Start & European Cover on all Ford Servicing
FREE Collection & Delivery Service*

INMAN HALL BUILDING & PLASTERING
FINE BUILDING AND PLASTERING SERVICES

- RENOVATION
- EXTENSIONS
- EMERGENCY REPAIRS
- BUILDING MAINTENANCE
- ROOFING
- PLASTERING

CALL GRAY INMAN-HALL : 07938217578
OR EMAIL : INMAN-HALLBUILDING@HOTMAIL.COM

CHURCH NEWS

All Saints Parish Church & St. Mary's Roman Catholic Church

ALL SAINTS CHURCH NEWS

In the 6th Century, an Irish court jester paid a visit to the court of King Rederech of Strathclyde. Sent, ostensibly as a favour, but in reality as a spy... His tales and jokes greatly amused the court during the Christmas holidays. As the jester prepared to leave, Rederech expressed his thanks and offered him a parting gift. The jester took advantage of the situation to play a subtle political game. When Rederech offered him gold, he replied, "We already have that in Ireland". Silver and fine jewels got the same response. Finally Rederech fell into the trap and asked the jester to suggest a gift, to which the jester replied that he would like a bowl of fresh mulberries.

The court thought this a fine joke, as mulberries are a summer fruit and it was the middle of winter. But the jester insisted, and the king was at a loss. If the king is unable to grant the gift he will lose of face - the jester will say that he only asked for a bowl of mulberries and yet this powerful Scottish king was unable to grant the request!

So the king visited St. Kentigern and explained the problem. Kentigern was uncomfortable about praying for such a trivial thing as mulberries in winter, yet he sensed it important to do so. He prayed, and God directed him to a bush that still bore fruit fresh enough to eat. The king gave the mulberries to the jester, praising God, who had enabled him to meet the jester's request.

The jester was shocked that the king had been able to find the 'impossible' fruit and immediately pledged himself to serve the king as court jester for as long as the king wants him to stay.

However, this is not the end of the story. For after serving as court jester for 'many days' we are told that the jester renounced the trade of actor, and gave himself up to the service of God. Which all goes to show that sometimes it is important to pray 'silly' prayers.

In scripture we see prayers for such silly things - a metal axe head to float on water, jars of oil and flour that would not run out, sticks that turn into snakes, handkerchiefs that might be able to heal. All rather bizarre and silly stuff, and yet somehow God uses these requests to bring about some seriously important results.

Rederech's 'silly' prayer led to his own faith and commitment to God being strengthened, to his honour being defended, to the salvation of a court jester and finally to his taking holy orders. As we enter 2023, don't be afraid of praying 'silly' prayers.

Stephen ✠

CHRISTMAS FESTIVAL AND TRAIL

A big thank you to everyone who supported All Saints Christmas Festival. A total of 38 window and garden displays were presented, which were lovely - you all deserved a prize!

Thank you to all who cleaned, decorated and prepared the church, made cakes, served refreshments and sold the big array of gifts and bric-à-brac. Thanks to Sheila Asprey for providing the beautiful tree and to Penny Arscott and Belinda Hall for all their help.

Finally, thanks to our sponsors for their support, which helped us make £1600 for church funds.

Competition results:

Best outdoor display: *Gill & Tony Ribton 5 Hunters Close*

Best window display: *Rachel Ruskin, 3 High Street*

Gin Raffle: *Karen Pennington*

Cake Raffle: *Penny Arscott*

Christmas Carol Quiz.: *The Greaves Gang*

Di Jones



ST.MARY'S NEWS

St Mary's is 150 years old this year and we are celebrating this from Easter to August with a series of events and activities. This is an important milestone in the life of St Mary's and we hope to involve the village in the celebrations planned... watch this space.

We continue to have Mass each Sunday at 11.00am and on the third Thursday at 10.30am.

It was good to welcome lots of visitors to our Christmas services.

Father Matthew ✠

✠CHURCH SERVICES ✠

Hexagon Benefice

FEBRUARY

5th St. Mary's, Bruntingthorpe

12th All Saints, Theddingworth

19th All Saints, Husbands Bosworth
Mothering Sunday & Baptism

26th St. Peter's, Arnesby

All Saints Church invites you to an
informal, warm and friendly
mid-week communion every
Wednesday 10.00am

Senior Churchwarden:

Di Jones 880741

Curate:

Stephen March

Stephen.March@LeicesterCofE.org

St Mary's Roman Catholic Church

Mass celebrated every
Sunday at 11.00am

Contact:

Robert Constable-Maxwell 880361

Fr. Matthew Pittam 01788 833547

E:matthewpittam@yahoo.co.uk

Parish Notices

Rev. Thomas Ruggles Fisher

formerly rector of this parish

Died 6th December 2022

Age 102 years

Karen Raven

formerly of Church Lane

Died 15th December 2022

✠ **R.I.P** ✠

One of the Largest Collections of
WWII Vehicles and Militaria in the Midlands.

Our under cover collection includes post war vehicles, Main Battle Tanks, as well as an excellent selection of other American, German and British vehicles. With interactive displays and lots of things to see. Visit on a game day (Saturday, Sunday or selected Wednesday—April to October) and you will get to see some of our vehicles driving around.

01858 880 239

Chat to us Online
www.armourededdon.co.uk

Office hours Monday to Friday 0900hrs—1700hrs

DONALD CAMPBELL
LANDSCAPES
Experienced in all
aspects of hard
landscaping, fencing,
stone-walling, block
paving and general
garden maintenance.
Husbands Bosworth
area
Tel. No. 07817 381 244

FORTHCOMING EVENTS

Wednesday, February 1 st	Historical Society Archive Film & Slide Show, 8.00pm VH
Tuesday February 7 th	Parish Council meeting, 7.30pm Sports Pavilion
Wednesday, February 8 th	Craft Group, 7.00pm - 9.00pm Committee Room, VH
Friday, February 10 th	Causeway Coffee Morning, 10.00 - 11.30am Sports Pavilion
Tuesday, February 14 th	Art Group, 10.00am - 12.00pm Sports Pavilion
Friday, February 17 th	Mobile library
Wednesday, February 22 nd	Ash Wednesday
Tuesday, February 28 th	Art Group, 10.00am - 12.00pm Pavilion
Tuesday February 28 th	Village Lunch, 12.30pm Kilworth Springs Golf Club
Saturday March 18 th	FOBS Wine Testing Evening
Sunday April 9 th	Easter Sunday
Saturday May 6 th	CORONATION DAY
Saturday May 6 th	Picnic in the Park, Bosworth Hall
Saturday May 20 th	FOBS Safari Supper

LOCAL PLANNING NEWS

The following applications have been submitted to Harborough District Council:

- 22/01959/FUL Change of use, agricultural land to a campsite & siting of moveable shepherds hut, Cotehill Farm, Station Road
- 22/02041/VAC Erect dwelling (var. of cond.) of 22/01119/FUL for design alterations to garage/link building, Land adj. 35, Butt Lane
- 22/02158/FUL Demolition of existing single storey apartment and erect of a dwelling (resubmission of 22/00945/FUL), 15a High Street
- 23/00003/FUL Erection of roadside gates, 40 High Street

Recently determined applications:

- 22/00820/FUL (*Approved*) Creation of earth banked slurry lagoon, Honeypot Farm, Honeypot Lane
- 22/01784/FUL (*Approved*) Replacement windows and door to the front and rear of the property, 18 High Street
- 22/01930/TCA (*Approved*) Works to trees, 19 Bell Lane

Current applications may be inspected during normal working hours at the Council Offices, The Symington Building, Adam & Eve Street, Market Harborough.

Planning applications and other aspects of local government can now be viewed on-line at www.harboroughonline.co.uk

You can view the Planning Decision Notice and other relevant information relating to the recent quarry planning permission at: <https://leicestershire.planningregister.co.uk/Planning/Display?applicationNumber=2021/CM/0041/LCC>

MOBILE LIBRARY

Stops & Times

School, Welford Road: 10.25am - 11.25am

Berridges Lane: 11.30am - 12.10pm

Butt Lane: 12.15pm - 12.50pm

Mobile library Service 0116 305 2695

email: libraries@leics.gov.uk

District of Harborough



*We collect up to 3 large household items or 12 sacks of waste for a charge of £37.16.
Search: Harborough Bulky Waste*

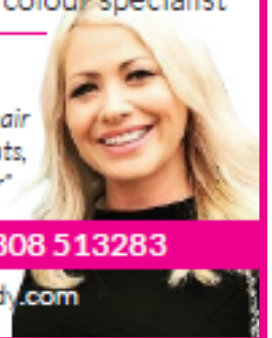
Feb-23						
Mo	Tu	We	Th	Fr	Sa	Su
		1	2	3		
6	7	8	9	10		
13	14	15	16	17		
20	21	22	23	24		
27	28					

HAIR BY LYNNDY

Award winning hair stylist & colour specialist



"Now welcoming everybody to my hair studio in Husbands Bosworth for cuts, colours, blow-dries & wedding hair"



Appointment only - 07808 513283

lynndy@hairbylynndy.com

'JJ's Kiddycare'



- * FREE Pre-school sessions for 2, 3 & 4 year olds
- * Full Day Care 0-5yrs
Situated on a farm site between South Kilworth and Welford
- * Breakfast and After School clubs. (4-14years)
- * Holiday Clubs during all Northants & Leics school breaks

Tel no. 01858 575642

www.jjs-kiddycare.co.uk

Email: admin@jjs-kiddycare.co.uk



- Toe nails cut
- Corns
- Verrucas
- Ingrown toe nails
- Hard dry skin
- Fungal nails
- Hopi candle ear wax removal
- Holistic therapies
- Home appointments**
- 07842 266575**

www.happyfeetmidlands.com



HAPPY
FEET

Registered
Foot Care
Specialist