

## SHOWCASED

**D**espite a particularly difficult year for growing and displaying produce exhibits, we had an excellent display again for the Horticultural and Craft Show this year...

Baking exhibits seem to be on the increase, with some of the bakes and brews available to taste, which we will look to continue as a new 'tradition' next year. The photography, art and craft entries were again amazing - a reflection of the truly skilled and artistic people in the village.

The show is a local community non-profitmaking event and has been for the last 140 years. The support from donations and volunteers helps to keep the show running. Costs for printing the schedules, judges, hall hire, trophies and rosettes, tombola, raffle prizes and refreshments are all paid for from sponsorship and proceeds of the show and any surplus will be used either to replace show equipment or to help fund local village good causes.

However, the heart of the show is not about how much money we make - although a fantastic bonus - but about the community coming together and entering into the spirit of light-hearted competition, admiring the different exhibits or checking out the competition, joining in with the tombola/raffle or simply enjoying a cup of tea and a homemade cake with friends and catching up on village gossip!



## FLORAL FEST

**T**he Horticultural Show wasn't the only flowery feast for the village recently... St. Mary's Church Flower Festival weekend also brightened up the village. St Mary's community really pulled together over the weekend to celebrate the 150<sup>th</sup> anniversary of the founding of the church in Bosworth.



Church leader, Bishop Keith Newton preached a wonderful homily to a 'full house' and took the opportunity to announce the intention to create St Mary's, which has been a private chapel since its founding, as a parish within the Ordinariate.

An evening concert, which included recitals by Wells Cathedral and BBC Young Chorister of the Year, Mila Tsoneva, brought the weekend to a close.



## WHARF WIN

**C**ongratulations to Darren and Anna and all the team at the Wharf Inn on being voted CAMRA's Rural Northamptonshire Pub of the Year.

*Editor's Note: Shhh... We all know that The Wharf is actually in Leicestershire!*



The Wharf Inn  
Welford  
Northamptonshire  
NN6 6QJ  
01858 575075

## GOVANNEN

**Y**ou are invited to come and join us for a fun night of Irish music and dancing when traditional folk band, Govannen make a very welcome return to the Village Hall on Saturday, November 11<sup>th</sup>.

Tickets £16, include a serving of Sam's delicious pie...

Please contact Ralph on 880526 or email: [ralphhorton01@gmail.com](mailto:ralphhorton01@gmail.com) for further information or to reserve your places.

\*\*\*\*\*

*Leicestershire-based Govannen is one of the foremost Celtic music bands in the country, blending jigs and reels with traditional and contemporary Irish songs.*



## BUGLE POSTBAG

*From Di Jones, Senior Church Warden, All Saints Church*

Volunteers needed to deliver Church Magazine

As our village has expanded we are now in need of volunteers to deliver the *Hexagon* magazine each month. It is only 10 times a year and should not take longer than half an hour. The roads involved are Welford Road, The Green, School Lane, Knights Close, Cherry Tree Close, Kemp Drive and Berridges Lane.

If you can offer some help please contact Di Jones 880741 or Jean Hutchings 880131.

Thank you.

*From Karen Roff, HB Horticultural Show*

WOW! What can I say other than a huge thank you to absolutely everyone for supporting our village show... again!! None of this would be possible without the support and encouragement of our sponsors, volunteers, exhibitors and those who came to see what all the fuss was about and generally enjoy an afternoon out meeting and seeing family and friends (both old and new)!

A BIG thank you to the people who helped to prepare the hall and clean up after, those who baked cakes and helped on the day... in the kitchen, on the tombola, raffle, taking exhibit entries, judging the entries and awarding the cards and trophies and so much more.

I would also like to take this opportunity to thank our kind sponsors:

The Parish Council, Throgmorton Associates Wealth Management Limited (Enderby), Ascoughs Bistro and Brian and Eleanor Murphy.

Thank you also to the outside stalls; *Blooming Lovely*, *Lois Pedley's Art*, Faye Deane's *Body Shop* for their contributions towards the amazing raffle prizes on offer, and also the secondhand bookstall.

Thanks to our judges, from the Leicester and Leicestershire Horticultural Judges Guild. This year we had 61 entrants, slightly down on last year, but 359 entries, which was slightly more. The judges carefully examine, taste cakes, jams and home brews (they leave the home brews until last for obvious reasons!) and then make their final decision and remain at the show to answer any questions. A big thank you to our judges, for their time and enthusiasm and also to Lois Pedley for helping to judge the art classes and Kevin McEneaney who helped judge the photographic entries.

## THE BUGLE TEAM

**Editor:**

**Melvyn Forman**

**10 Church Lane**

**Tel: 880281**

**Email: bosworth\_bugle@talk21.com**

**Treasurer & Advertising:**

**Ralph Horton**

**18 Highcroft**

**Tel: 880526**

**Contacts:**

**Mike & Sylvia Price**

**3 Highcroft**

**Tel: 880902**

**Jo Horton**

**18 Highcroft.**

**Tel: 880526**

**Frances Smith**

**10 Butt Lane**

**Tel: 880225**

**Penny Mattock**

**9 Fernie Court**

**Tel: 881140**

**Heather O'Connor**

**16 Fernie Court**

**Tel: 880165**

**Postal Subscription & distribution:**

**Melvyn Forman**

**Tel: 880281**

**Email: bosworth\_bugle@talk21.com**

[www.husbandsbosworth.info](http://www.husbandsbosworth.info)

**COPY DEADLINE**  
**15<sup>th</sup> OF THE MONTH**  
**PRECEDING PUBLICATION**

## POLICE FILE



To contact your Dedicated Neighbourhood Team (DNT) online, use the quick and simple online contact tool - Search *Lutterworth Police*. You will be asked a few questions to make sure your query gets to the right place.

### LUTTERWORTH BEAT SURGERIES

**September**

Tuesday, September 5<sup>th</sup>, 12.00pm - 1.00pm

*Bitteswell (veue to be confirmed - see Facebook/Twitter)*

### POLICE FILE

**Market Harborough & Lutterworth Police**

**Dedicated Neighbourhood Team**

*Insp. Liz Perry*

*Sgt. Peter Nichols*

*PC James Day*

*PC Jason Rainbow*

*PCSO Alexander Caswell-Jones*

*PCSO Steve Adams*

**Market Harborough Police Station,**  
**Fairfield Road, Market Harborough**  
**0116 222 2222**

**harboroughandwigston.npa@leics.**  
**police.uk**

**CRIMESTOPPERS:**

**0800 555111**

**ACTION FRAUD:**

**www.actionfraud.police.uk**

**0300 123 2040**

**ARMOURGEDDON**

**Military Museum**

**One of the Largest Collections of**

**WWII Vehicles and Militaria in the Midlands.**

Our under cover collection includes post war vehicles, Main Battle Tanks, as well as an excellent selection of other American, German and British vehicles. With interactive displays and lots of things to see. Visit on a game day (Saturday, Sunday or selected Wednesday—April to October) and you will get to see some of our vehicles driving around.

**01858 880 239**

Chat to us Online  
[www.armourgeddon.co.uk](http://www.armourgeddon.co.uk)

Office hours Monday to Friday 0900hrs—1700hrs

**Emma Lane**

**WEDDINGS & EVENTS**

**For all your wedding & event planning needs**

We cater for private parties, marquee events and corporate gatherings. Please contact us and let us help you.

W: [www.ejweddingsandevents.co.uk](http://www.ejweddingsandevents.co.uk)  
E: [hello@ejweddingsandevents.co.uk](mailto:hello@ejweddingsandevents.co.uk)  
T: 07920 464555



# BOSWORTH IN FOCUS

## WILD ABOUT BOSWORTH

### White Clover *Trifolium Repens*

White or Dutch Clover is one of those plants that typically go unnoticed, though an inspection of most lawns or roadside verges will reveal its presence. They are perennial and procumbent, meaning they grow horizontal runners which can take root to form a new plant. This is reflected in their species name '*repens*', which is Latin for creeping.

In the sixteenth century cattle were left to roam at will: feeding on whatever vegetation they could find alongside tracks, in woodland and in fields left fallow. By the seventeenth century, improved crop rotation practices began to be employed, which included clover fields grown for animal fodder and soil improvement. Specifically, clover is a legume that fixes nitrogen through root nodules.

Ecologically, the trefoil leaves are valuable to wood mice, bumblebees, Common Blue butterflies, numerous insects, and slugs and snails. In the winter clover is an important food source for wildfowl and wood pigeons.

Clover is edible and can be added to salads, though boiling for 5-10 minutes makes them more digestible. In India, it is used as a folk medicine to treat intestinal worms. Interestingly, scientific studies have demonstrated its significant anti-tapeworm properties.

The idea that four-leaf clovers bring good luck stems from a Druid superstition that they protect against evil spirits. Today the leaves are said to stand for faith, hope, love and luck.

Charles Darwin was once asked by a farmer how he could improve his crop of clover seeds. Darwin's reply was to get more cats! His reasoning being that bumblebees pollinate the flowers, mice eat bumblebees and cats eat the mice. So, more cats, fewer mice, more bumblebees; leading to better pollination rates. Darwin's friend, Thomas Huxley expanded this logic by pointing out that British soldiers lived on beef which fed on clover and spinsters kept cats... Thus, the British Empire was dependent upon 'Old Maids'.

Mike Chanter



## BOSWORTH SKY AT NIGHT

### Astronomy from your Backyard

Now the evenings are getting darker we can see the stars at a better time earlier in the evening. There are three summer constellations in view, each with a very bright star: There is the constellation *Cygnus* (the Swan) with the star *Deneb*, the constellation *Lyra* (lyre - a musical instrument) with the star *Vega*, and the constellation *Aquila* (the Eagle) with the star *Altair*. [See the diagram]. These three bright stars form a large triangle which we call the Summer Triangle and, from September, when it is overhead, heralds the return to backyard astronomy with darker skies.



*Cygnus* is right overhead now in September and the swan seems to be flying towards the South-Western horizon. *Cygnus* is located within the Milky Way which is our view of the galaxy that includes our solar system and the Earth. The Milky Way is most dense as it goes through *Cygnus* and you should see it as a hazy band of light on a dark cloudless night from Husbands Bosworth. Look at it with binoculars and you will see countless little stars just as Galileo Galilei first did in 1610 with his telescope. *Lyra* is also overhead and features the famous Ring Nebula or M57. The Ring Nebula is a planetary nebula formed when a star, during the last stages of its evolution before becoming a white dwarf, expels a vast luminous envelope of ionized gas into the surrounding interstellar space. A good telescope is needed to observe the Ring Nebula.

Mike Price



- Toe nail cut
- Corns
- Verrucas
- Ingrown toe nails
- Hard dry skin
- Fungal nails

**Home appointments**  
**07842 266575**  
[www.happyfeetmidlands.com](http://www.happyfeetmidlands.com)

## Happy Feet

Registered Foot Care Specialist

## HAIR BY LYNNDY

Award winning hair stylist & colour specialist



"Now welcoming everybody to my hair studio in Husbands Bosworth for cuts, colours, blow-dries & wedding hair"

**Appointment only - 07808 513283**  
[lynndy@hairbylynndy.com](mailto:lynndy@hairbylynndy.com)



# SCHOOL REPORT

HUSBANDS BOSWORTH C. of E. PRIMARY SCHOOL Head Teacher Alan Eathorne

Our new website is here!!!!

We have been developing our new school website. You will find the normal mix of news, useful documents and school news updates on here. We will be using it alongside the Arbor app to strengthen communication between our staff, parents and governors.

Check us out at: [www.husbandsbosworth.leics.sch.uk](http://www.husbandsbosworth.leics.sch.uk)

## Term Times

**Half Term:** 16<sup>th</sup> - 20<sup>th</sup> October

**Christmas:** School closes December 22<sup>nd</sup>  
Reopens January 5<sup>th</sup>

## BYGONE BOSWORTH

*Images from the Historical Society's Archive Collection*

It is easy in our wanderings around the village to miss the smaller details. Take a walk down Church Lane and look out for these impressive frontages of numbers 15 and 17. The double gabled frontage of these two rather grand houses and their impressive entrances are more representative of town architecture, prosperous merchants houses maybe.

Look closely at the decorative corbel faces either side of the doorways - each doorway is flanked by a smiling face and frowning face...



These expressive facial features are said to depict a smiling welcome to good spirits visiting the home, whilst the frowning face deters evil spirits!

The two houses were built as the master's and teacher's houses for the now lost single room private school, which stood next door on Church Lane.



## ANNUAL GENERAL MEETING

THURSDAY 14TH  
SEPTEMBER AT 6.30PM

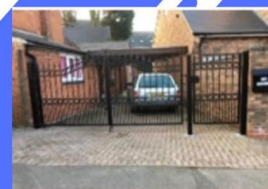
AT HUSBANDS BOSWORTH PRIMARY  
SCHOOL

## EVERYONE WELCOME

*Come along and join us*

If you would like to know more about about  
joining FOBS contact Claire on  
07980545686

## SAVE YOUR SUMMER CLEAR OUT FOR FOBS!



1a Hunters Close,  
Husbands Bosworth

**DROP OFF OPENS MONDAY  
21ST AUGUST  
CLOSES WEDNESDAY 13TH  
SEPTEMBER**



## OPEN GARDENS 2023

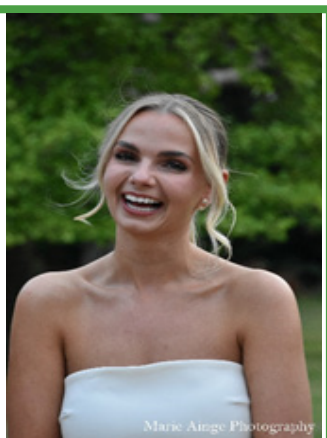
There are some lovely autumn gardens to visit locally during September and October. Opening on Sunday, September 17<sup>th</sup>, between 11.00am and 6.00pm, is Westview, in Great Glen LE8 9EH. An immaculately maintained small walled cottage garden with year-round interest. The garden is organically managed with many unusual plants and features some interesting garden ornaments, many made from recycled materials. The owner has a wealth of gardening knowledge to share, along with homemade cakes.

*In 2022 the National Garden Scheme donated over £3.11 million to our best-loved charities including Macmillan Cancer Support, Marie Curie, Hospice UK and The Queens Nursing Institute. Full details at: [www.ngs.org.uk](http://www.ngs.org.uk)*

## MARIE AINGE PHOTOGRAPHY

Now taking bookings where I can come to you. Garden events, farm & stableyard visits, Nursery school visits or picnic in the park with loved ones and pets. Slots now available. Prices are from £55.

View Facebook & Flickr.com  
Contact 01858 880823  
Email: [aingell1@sky.com](mailto:aingell1@sky.com)



## 'JJ's Kiddycare'



- \* FREE Pre-school sessions for 2, 3 & 4 year olds
- \* Full Day Care 0-5yrs  
Situating on a farm site between South Kilworth and Welford
- \* Breakfast and After School clubs. (4-14years)
- \* Holiday Clubs during all Northants & Leics school breaks

Tel no. 01858 575642  
[www.jjs-kiddycare.co.uk](http://www.jjs-kiddycare.co.uk)  
Email: [admin@jjs-kiddycare.co.uk](mailto:admin@jjs-kiddycare.co.uk)



## MORE BOSWORTH IN FOCUS

### HISTORICAL SOCIETY

The opening meeting of Husbands Bosworth Historical Society's winter programme will be on Wednesday October 4<sup>th</sup> when we will be looking at the Great Central Railway and their exciting Reunification Project.

*The Great Central Railway (GCR) is the only double-tracked main line heritage railway in the country, which enables two trains to pass, as they would have done in commercial days, on live-running tracks.*

*The GCR is currently undertaking an ambitious project to reconnect the track, severed when the line was closed in 1966, linking once more the Leicester to Loughborough section to the Loughborough to Nottingham section.*

**This is an open meeting... Come and join us, everyone welcome - subscriptions, £12 for the year, will be taken at our next meeting in November, when we will be welcoming the Friends of the Ashby Canal Society.**

### OPEN ART STUDIOS

David Dunmore will once again open his painting studio at Orchard House, 14 Mowsley Road over the weekend of 16<sup>th</sup> and 17<sup>th</sup> September. This will be an opportunity for visitors to view his paintings and to watch the artist at work!

David paints in watercolours and his work includes landscapes of the British countryside, detailed botanical studies and studies of natural forms. In addition to original paintings for sale, prints of his work and greeting cards will also be available to purchase.

This open studio event is part of the wider Northamptonshire Open Studios and Exhibition taking place at Lamport Hall throughout September, involving 223 artists in over 100 venues. A catalogue of all the studios to visit is available for visitors.

David's studio will be open between 10.00am and 4.00pm and entrance is free.

### Market Harborough Art Exhibitions

*There will be an exhibition of local paintings, collage, ceramics, glasswork and photographs at the Harborough Theatre over the weekend. The exhibition, arranged by The Market Harborough Artists Cluster will showcase the very creative work of about 30 artists working in the Harborough area. All of the work on display will be available to purchase.*

*Entrance is free and refreshments will be available at the Theatre each day.*

*This exhibition coincides with the annual Art Windows event which takes place throughout September each year. This enables artists, shopkeepers, restaurants and local businesses to come together to display the wide range of art work carried out in the Harborough area. A map is available showing the shop windows where work is on display enabling people to follow the art trail around the town. In recent years this has proved to be a very successful community event.*

### CRAFT GROUP

The Craft Group meets on the second Wednesday of each month in the Committee Room of the Village Hall, 7.00pm to 9.00pm. This is a friendly and informal gathering where craft-minded people can pick up new ideas and practise their craft in a relaxed atmosphere away from the distractions of home life.

For details contact Gail on 880413.

### CAUSEWAY COFFEE

The next Causeway Coffee Morning will be on Friday, September 8<sup>th</sup> 10.00am - 11.30am. Causeway Coffee meetings are on the second Friday of each month and are open to any villager retired and living alone - come along for a coffee/tea and a chat..

For more information please contact Heather on 880165.

**Please note: During the building works at the Sports Pavilion our meetings will be held in the Committee Room, Village Hall.**

### VILLAGE LUNCH

The next Village Lunch will be on Wednesday, September 27<sup>th</sup> at Kilworth Springs Golf Club, South Kilworth Road, North Kilworth. We meet at 12.30pm to eat at 1.00pm.

The Village Lunch is a great place for those new to the area, retired or living alone to catch up with old friends and all the gossip, and make new friends in a warm and friendly atmosphere, whilst enjoying a top-class home cooked meal.

The cost of the two-course meal, including tea/coffee and mints is £12.50 per person. Vegetarian and special dietary needs available.



**Please note:** We can now accept payment by card! *(We customarily take a tip at the table!)*

Please call Janice on 880668 if you would like to book a place, to arrange transport to the venue or for any more information.

**Next month's Village Lunch date:**  
**Thursday, October 26<sup>th</sup>.**

**BEGLEY'S**  
Established 50 Years  
**GENERAL JOINERY SPECIALISTS**

Wooden Windows and Doors  
Porches  
Conservatories  
Carpentry & Building



Free estimates  
All items can be viewed at Shearsby Workshop

Tel: **0116 2478755** (day)  
**01858 880569** (eve)  
Email: [andybeg@hotmail.co.uk](mailto:andybeg@hotmail.co.uk)

**P.C. BUILDING SERVICES LTD**  


Complete building service  
Specialist in new build  
Quality renovations  
& Extensions

**Tel/Fax 01858 881202**  
Email: [pcbuidserv@btinternet.com](mailto:pcbuidserv@btinternet.com)

Walton Grange, Bosworth Road  
Walton, Lutterworth, Leics LE17 5RW

**DONALD CAMPBELL**  
**LANDSCAPES**  
Experienced in all  
aspects of hard  
landscaping, fencing,  
stone-walling, block  
paving and general  
garden maintenance.  
Husbands Bosworth  
area



**Tel. No. 07817 381 244**

# PARISH COUNCIL NEWS

## Report of the Parish Council Meeting held on Tuesday, August 1<sup>st</sup> 2023

Present: Cllr. Bolter (Vice Chair) Cllr. Forman Cllr. Gallagher & Cllr. Peel

Apologies were received and approved from Cllr. Hobson and Cllr. East. Cllr. Kunciewicz had submitted her resignation, which was accepted by Council

### Visitors' Questions

□ Mick George of Mick George Limited, the operator of the Quarry site and Stephen Constable-Maxwell, the owner of the quarry land, attended the meeting to update Council on the current operations at the quarry. Council took the opportunity to discuss vehicle movements, speed limit observance, parking vehicles on the pavements and clean roads.

### Minutes

□ Minutes of the Annual Meeting and the Ordinary Parish Council Meeting held on Tuesday 6th June 2023 were approved

### Matters Arising

□ Council to request information from the headmaster of the primary school regarding the school's enrolment policy

□ Parish Councillor personal information to be added to website and Parish Office noticeboard

□ Clerk was requested to secure quotes for the required conservation of the Parish Burial Book

□ Clerk confirmed that the dog waste bin at Welford Wharf was to be retained for the time being

### Finance

□ Bank Statements, Cashbook reconciliation & Bank Reconciliation for June/July presented for noting

### Pavilion Alterations - Update

□ Clerk reported that windows and doors were fitted, securing the building and breakthrough was imminent

□ Cllr. Bolter volunteered to join the project sub-committee to replace retired Cllr. Fletcher

### Firs Farm Update

□ Clerk advised that regular reports would be submitted by the contractors clearing the site

### Standing Orders / Code of Conduct

□ It was agreed to review the Standing Orders. Cllr. Peel suggested that he, along with Cllrs. Gallagher and East, undertake the initial review as it would give them an opportunity to familiarise themselves with the document and content

### Removal of Any Other Business (AOB)

□ After discussion, it was agreed that AOB is kept in agendas, but only as an information opportunity

### Parish Defibrillators

□ A parishioner attended the meeting to offer to donate a defibrillator to the Parish, as a memorial to his late wife. Council acknowledged the generosity of this gesture and agreed to investigate potential sites and costs

### Date of 2024/25 Precept meeting

□ Council agreed to move the Parish Precept meeting to January to allow more accurate data to be included in the budgeting process

### King's Coronation Commemorative Oak Tree

□ Councillor Bolter proposed a maximum budget of £200 be set to purchase a tree, stake, ties, a deer guard and delivery

### Parish Maintenance

□ Council agreed to investigate solutions to the bird fouling on the bench on The Green. Clerk to investigate options

□ Clerk to get quote from a contractor to undertake work to clear the ditch between 7 Kilworth Road and the Scout HQ

□ Use of Parish Equipment (mowers and strimmer) by Millennium Wood volunteers was discussed, however there was concern that users would not be covered by the parish insurance

### St Mary's Church 150th Anniversary

□ It was agreed that the Parish Council would provide a floral display for St. Mary's Flower Festival

### Any Other Business

□ Cllr. Peel asked that Council discuss a review of banking options, as an agenda item at the September meeting

### Date and time of next meeting

There will be an Ordinary Parish Council Meeting held on Tuesday 5<sup>th</sup> September, (venue to be confirmed).

A full copy of the Minutes can be viewed or downloaded at: [www.husbandsbosworthpc.org.uk](http://www.husbandsbosworthpc.org.uk) or by request to the Parish Clerk.

## SID REPORT

Readings from the Speed Indicator Device

### Hiigh Street westerly

Period: 19.07.07.23 - 26.07.23

Vehicle movements: 9944 Av./day: 1421

Average speed: 26.08mph

Highest recorded speed: 77mph

### High Street westerly

Period: 26.07.23 - 02.08.23

Vehicle movements: 11398 Av./day: 1628

Average speed: 25.80mph

Highest recorded speed: 80mph

### High Street Easterly

Period: 02.08.23 - 09.08.23

Vehicle movements: 15079 Av./day: 2154

Average speed: 25.59mph

Highest recorded speed: 76mph

### High Street Easterly

Period: 09.08.23 - 16.08.23

Vehicle movements: 14170 Av./day: 2549

Average speed: 25.49mph

Highest recorded speed: 57mph

## LOCAL OFFICERS

### Parish Councillors

Patricia Hobson (Chair) 880070

James Bolter

Melvyn Forman

Gareth Peel

Kay Gallagher

Thomas East

### Parish Clerk

Derek Watson

2a Mowsley Road LE17 6LR

Tel: 881109

[clerk@husbandsbosworthpc.org.uk](mailto:clerk@husbandsbosworthpc.org.uk)



All aspects of vegetation management, landscape maintenance and weed control

Urban, highway, sports, industrial and domestic

LanGuard Ltd • Packs Hill Farm • Station Road • Husbands Bosworth • Lutterworth • Leicestershire • LE17 6JN

Tel: 01858 880 898 • Fax: 01858 880 720

Email: [info@languard.co.uk](mailto:info@languard.co.uk)

## F&W Plumbing & Heating Services Ltd

Based in North Kilworth

□ Bespoke bathroom & kitchen design and installation

□ All types of wall and floor tiling

□ Hot and cold water systems

□ Unvented hot water systems

Contact Jason on 07866741261

Email: [jasonfandw@hotmail.com](mailto:jasonfandw@hotmail.com)

[www.fandwplumbingandheatingservices.co.uk](http://www.fandwplumbingandheatingservices.co.uk)

Over 30 years experience in designing and installing contemporary and traditional kitchens and bathrooms

Project manage personally with all associated trades for a co-ordinated high quality finish with minimum disruption



# CHURCH NEWS

*All Saints Parish Church & St. Mary's Roman Catholic Church*

## ALL SAINTS CHURCH NEWS

### Your village church needs help...

We are a kind, caring congregation happy to turn our hand to most things but are sadly getting older and are struggling with the necessary housekeeping and fundraising for All Saints Church.

Unfortunately it may come to a point where we are unable to look after the fabric of the church and sadly it will have to close. We obviously pray that it will not come to that point where there are insufficient people and funds to carry on caring for All Saints church, but if this becomes the case it will ultimately close.

All Saints Church belongs to everyone in the village of Husbands Bosworth, its future is in your hands as well as ours and with Gods help we can do this together.

*Di Jones Church Warden*

### Foodbank collection

Thank you to everyone who contributed to the Lutterworth Foodbank last month. The amount was slightly less than last time at almost 50kg, but very gratefully received by the Foodbank.

It is especially nice that some people stay to have coffee and biscuits when dropping the goods off - everyone is very welcome.

The next collection will be on Friday, October 6<sup>th</sup>, 2.00pm - 4.30pm in Church.

### Christmas Market and Trail

A date for your diary - December 9<sup>th</sup> and 10<sup>th</sup>

Please let us know if you would like to take part, run a stall, hire stall space or help in any way.

Di Jones 880741

## ST.MARY'S NEWS

We had a wonderful 150<sup>th</sup> weekend at St Marys' from August 11<sup>th</sup> to the 13<sup>th</sup> when we had our flower festival, with many displays created by people from the villages and local groups and organisations. It was a real joy that so many from the village and local area came and took part.

On the Saturday evening we had a full house for a musical concert with Mila, who was a finalist in BBC Chorister of the Year.

On Sunday 15<sup>th</sup> our Ordinary, The Rt. Revd. Monsignor Keith Newton celebrated Mass to a full church for the 150<sup>th</sup> anniversary. At this he announced the intention to create St Mary's as a Parish Church which will ensure that the centuries old catholic community here has a firm foundation for the next 150 years!

Special thanks were given to Robert and Susan Constable Maxwell who have worked so hard for many years to sustain the community and Church of St Marys.

On Sunday, September 24<sup>th</sup> St. Mary's Church community will be hosting our Harvest Festival Mass in church followed by a special harvest lunch at The Stable House Barn, North Kilworth. Please put the date in your diary. For more information please email: [Matthew.Pittam@geh.nhs.uk](mailto:Matthew.Pittam@geh.nhs.uk)

As in previous years we will decorate the church with produce and flowers. A lovely village occasion.

We continue to have Mass each Sunday at 11.00am and Thursday at 10.00am

*Father Matthew* ✠

## ✠CHURCH SERVICES ✠

### Hexagon Benefice

#### SEPTEMBER

Sun 3<sup>rd</sup> 10.30am Thedd.

Sun 10<sup>th</sup> 10.30am HB

Sun 17<sup>th</sup> 10.30am B'thorpe  
3.00pm Knaptoft Ruins

Sun 24<sup>th</sup> 10.30am Mowsley

All Saints Church invites you to an  
informal, warm and friendly  
mid-week communion every  
Wednesday 10.00am

#### Senior Churchwarden:

Di Jones 880741

#### Curate:

Stephen March

[Stephen.March@LeicesterCofE.org](mailto:Stephen.March@LeicesterCofE.org)

### St Mary's Roman Catholic Church

Mass celebrated every  
Sunday 11.00am & Thurs. 10.00am

#### Contact:

Robert Constable-Maxwell 880361

Fr. Matthew Pittam 01788 833547

[E:matthewpittam@yahoo.co.uk](mailto:E:matthewpittam@yahoo.co.uk)

## KNAPTFT CHURCH

During the summer months, the Friends of Knaptoft Church invite old and new friends to our special outdoor services of worship amid the tranquillity of the beautiful ruins of the church of St. Nicholas.

We will be celebrating our Harvest Festival at our next service on Sunday, September 17<sup>th</sup> at 3.00pm. As usual, our friends

from the Fleckney Silver Band will be providing the musical accompaniment.



## FLOWERS BY HEATHER

### Husbands Bosworth



*Flowers and floral  
arrangements for any  
occasion*

*Call for a free consultation.*

*Many years experience  
in the floral industry.*

*Follow or like me on  
Facebook.*

*Call me on 07773 063063*

## N & S A Fisher – Wigston

Spa Lane

Wigston, LE18 3QD

[www.fisherswigston.co.uk](http://www.fisherswigston.co.uk)

Tel. 0116 288 1101



### We offer:

*New Ford and Used Vehicle Sales*

*Ford Factory Trained Technicians*

*All Makes Servicing & M.o.T*

*FREE Ford Assist – AA Home Start & European Cover on  
all Ford Servicing*

*FREE Collection & Delivery Service*

## FORTHCOMING EVENTS

Tuesday September 5 <sup>th</sup>	Parish Council Ordinary meeting, 7.30pm ( <i>venue to be confirmed - see Parish Notice Board</i> )
Friday September 8 <sup>th</sup>	Causeway Coffee morning, 10.00am - 11.30am ( <i>venue to be confirmed</i> )
Wednesday September 13 <sup>th</sup>	Craft Group, 7.00pm Committee Room, Village Hall
Friday September 15 <sup>th</sup>	Mobile Library
Sat./Sun. September 16 <sup>th</sup> - 17 <sup>th</sup>	Northants Open Studios, David Dunmore's Studio, 14 Mowsley Road, 10.00am - 4.00pm
Sunday September 17 <sup>th</sup>	Knappoft Ruins Harvest Festival Service, 3.00pm
Wednesday September 27 <sup>th</sup>	Village Lunch, 12.30pm Kilworth Springs Golf Club
Tuesday, October 3 <sup>rd</sup>	Parish Council meeting
Wednesday October 4 <sup>th</sup>	Historical Society opening meeting - Great Central Railway & the Reunification Project
Friday, October 6 <sup>th</sup>	Foodbank Collection 2.00pm - 4.30pm in Church
Thursday October 26 <sup>th</sup>	Village Lunch
Saturday November 11 <sup>th</sup>	Govannan Celtic Music Concert, VH. Contact Ralph 880526 email:ralphhorton01@gmail.com
Sat./ Sun. December 9 <sup>th</sup> & 10 <sup>th</sup>	All Saints Village Christmas Trail and Festive Market

## LOCAL PLANNING NEWS

The following applications have been submitted to Harborough District Council:

- 23/01032/TCA Works to trees (fell), 8 Bell Lane
- 23/01033/TPO Works to trees (HDC TPO 97), 21a Mowsley Road
- 23/01109/VAC Erection of a dwelling (var. of cond.) of 22/01119/FUL to alter the design of the garage/link building, Land adj. 35, Butt Lane
- 23/01128/TCA Works to tree, Toad Hall, Honeypt Lane

**Recently determined applications:**

- 23/00990/TCA (*Approved*) Works to trees, Oldridge, 60 Bell Lane

*Current applications may be inspected during normal working hours at the Council Offices, The Symington Building, Adam & Eve Street, Market Harborough or at the Parish Office, 2a Mowsley Road.*

*Planning applications and other aspects of local government can be viewed on-line at [www.harboroughonline.co.uk](http://www.harboroughonline.co.uk)*

### MOBILE LIBRARY

#### Stops & Times

**School, Welford Road: 10.25am - 11.25am**

**Berridges Lane: 11.30am - 12.10pm**

**Butt Lane: 12.15pm - 12.50pm**

**Mobile library Service 0116 305 2695**

**email: [libraries@leics.gov.uk](mailto:libraries@leics.gov.uk)**

### BUGLE FREE ADS

High chair no longer needed. Good home required in return for a donation to All Saints Church, Husbands Bosworth.  
Di Jones 880741.

## COMPLETE CAR CARE

Accident repair specialist

Bodywork, dent, scratch and stone-chip repair

Servicing, alloy refurbishment, welding

MoT repair

Valeting, full body polish

Parking sensors, tyres & exhausts, etc. fitted

Call Ben on 01858 880404

[bencompletecarcare@outlook.com](mailto:bencompletecarcare@outlook.com)

District of Harborough

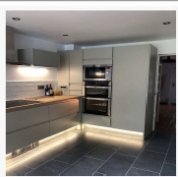


We collect up to 3 large household items or 12 sacks of waste for a charge of £37.16.  
Search: Harborough Bulky Waste

Sep-23						
Mo	Tu	We	Th	Fr	Sa	Su
				1	2	3
4	5	6	7	8	9	10
11	12	13	14	15	16	17
18	19	20	21	22	23	24
25	26	27	28	29	30	1

JR BESPOKE

PROPERTY RENOVATIONS



JLR Bespoke Property Renovations are an experienced and trusted Project Management and Construction team based in North Kilworth, Leicestershire.

If you have a project or idea in mind, please don't hesitate to contact us either by phone or via our website.  
Tel: 07864 741 261 (Jason Wright)  
[www.jrbespokeproperties.com](http://www.jrbespokeproperties.com)



INMAN HALL BUILDING & PLASTERING

FINE BUILDING AND PLASTERING SERVICES

- RENOVATION
- EMERGENCY REPAIRS
- ROOFING
- EXTENSIONS
- BUILDING MAINTENANCE
- PLASTERING

CALL GRAY INMAN-HALL : 07938217578  
OR EMAIL : [INMAN-HALLBUILDING@HOTMAIL.COM](mailto:INMAN-HALLBUILDING@HOTMAIL.COM)