

## HOUSING NEEDS

**H**usbands Bosworth Neighbourhood Plan is a Statutory Planning Document which must, by law, be consulted by the planning authority and anyone seeking permission to progress any residential or commercial activity within the parish.

The Plan defines styles, character and siting for future development and reinforces the community's views of how we would like the village to develop physically and socially - the 'blue print', our wish-list for the future of Bosworth.

Our Plan, which was 'made' in 2019 is still valid. However, at the August meeting of the Parish Council, it was agreed to conduct a review to reinforce the content, incorporate new and emerging legislation, realign with the Harborough Local Plan, the National Policy Planning Framework and take into account material changes within the parish, such as the recent increase in population. Although much of the previous work will still stand, the revision will allow us to look again at housing needs within the parish, including school place provision and development site allocations.

The new Labour government is proposing to build 1½ million extra homes in the next five years. Leicestershire's share of this building frenzy means that Harborough District, which already has seen 196 extra dwellings per year added to its existing annual allocation of 510, will likely see more added. The likelihood is that developers and local planners will be looking at favourable villages...

The corporate eye will surely be looking closely at Bosworth. So, it makes good sense for us to be prepared and hopefully in a position to say what we would like, and where we would like it... Our review will hopefully stand us in good stead. We'll need your help again - please look out for a call to arms!



## SHOW STOPPERS

**H**orticultural & Craft Show results:

**Overall Points Winner** - John Dawson

**Best Exhibit in Show** - Sarah Sharland

**Best Allotment Exhibit** - John Clarke

**Best Floral Exhibit** - Jennifer Rogers

**Best Vegetable in Show** - John Dawson

**Best Baker Exhibit** - James Hall

**Best Flower Exhibit** - Karen Ide-Lydiatt

**Best Preserves Exhibit** - Helen Allen

**Best Photography Exhibit** - Ellie

**Best Craft Exhibit** - Sarah Sharland

**Best Art Exhibit** - George Lathey

**Best Children's Exhibit** - Pippa Timson

**Best Children's Art Exhibit** - Freya Swales

**SAVE THE DATE!**

**Next year**

**Sunday, 17<sup>th</sup> August 2025**



## BOSWORTH SURGERY

**I**n a recent patient satisfaction survey of the GP practices within the Leicester, Leicestershire and Rutland Integrated Care Board area, Husbands Bosworth Medical Centre was ranked 13<sup>th</sup>, with 88% of respondents rating their overall experience of the practice as good.

Patients were asked to rate their recent experiences of communicating with the practice, their experience in the initial contact, satisfaction with appointments that were offered and their overall satisfaction with the clinical care that was provided. The survey also asked respondents to rate their overall trust in their GP services.

The survey of the 130 practices in the Board's area returned a total of 29,000 responses.

## HEXAGON FOLDS

**S**adly we note that *The Hexagon*, the newsletter for the Hexagon Benefice parishes closes its hard-copy pages with the September issue. Produced to inform residents in the six parishes of the benefice, Husbands Bosworth, Theddingworth, Mowsley, Shearsby, Bruntingthorpe and Arnesby of forthcoming events and church services, it has been decided that its role can be taken by an on-line presence, and the newsletter, with details of church services and church news will now continue in digital format.

\*\*\*\*\*

On a more positive note we see that the bi-monthly newsletter for Welford village, the *Welford Bugle*, recently celebrated its 300<sup>th</sup> edition, having launched in 1975.

## BUGLE POSTBAG

*From Karen Ide-Lyiatt & the Horticultural Show Team*

Yet again, an amazing year for the show and generous support by so many! This year was particularly difficult in growing and displaying produce exhibits, however we had an excellent display, with baking and preserve classes well supported. None of this would be possible without the support and encouragement of our sponsors, volunteers, exhibitors and those who came to see what all the fuss was about! So... a BIG thank you to the people who helped to prepare the hall and clean up after, those who baked cakes and helped on the day; in the kitchen (Heather and Penny), on the Tombola (Mary and her delightful grand-daughter Pippa), Raffle (Eleanor and Theresa) and taking exhibit entries (Steve and Nobby).

I would also like to take this opportunity to thank Husbands Bosworth Parish Council, *Throgmorton Associates Wealth Management Limited (Enderby)*, *Ascough's Bistro*, and Dr. & Mrs. Murphy, for their kind sponsorship, which covers the fixed costs - hall hire, judges' expenses, printing, rosettes, etc. A big thank you to all those who donated gifts, money or their time to making sure the show was a success.

Thanks also to our 'outsiders', Jan Curry, Mel and Keith Sprason with their plant and garden stalls, Lois Pedley's Art, an amazing selection of handmade wood work and second-hand books. All of which were a very welcome addition to our show and who also contributed towards the amazing raffle prizes on offer.

Our two Judges, (and a student judge) provided by the Leicester and Leicestershire Horticultural Judges Guild, spent over three hours carefully assessing the exhibits - this year we had 65 entrants (61 last year) and 325 display exhibits. A big thank you also to homegrown judges, Lois Pedley and Kevin McEneny who helped to judge the art and photo exhibits.

The Show has been going for 140 years, and as a local community non-profit-making event proceeds of the show and any surplus will be used either to replace show equipment or to help fund local village causes.

However, the heart of the show is not about how much money we make, but about the community coming together and entering into the spirit of light-hearted competition, admiring the different exhibits (or checking out the competition) or simply enjoying a cup of tea and a homemade cake and catching up on village gossip!

## THE BUGLE TEAM

*Editor:*

Melvyn Forman  
10 Church Lane Tel: 880281  
Email: [m.forman@talk21.com](mailto:m.forman@talk21.com)

*Treasurer & Advertising:*

Ralph Horton  
18 Highcroft Tel: 880526

*Contacts:*

Mike & Sylvia Price  
3 Highcroft Tel: 880902

Jo Horton  
18 Highcroft. Tel: 880526

Frances Smith  
10 Butt Lane Tel: 880225

Penny Mattock  
9 Fernie Court Tel: 881140

Heather O'Connor  
16 Fernie Court Tel: 880165

*Postal Subscription & distribution:*  
Melvyn Forman Tel: 880281  
Email: [m.forman@talk21.com](mailto:m.forman@talk21.com)

[www.husbandsbosworth.info](http://www.husbandsbosworth.info)

COPY DEADLINE  
15<sup>th</sup> OF THE MONTH  
PRECEDING PUBLICATION

## POLICE FILE



To contact your Dedicated Neighbourhood Team (DNT) online, use the quick and simple online contact tool - Search *Lutterworth Police*. You will be asked a few questions to make sure your query gets to the right place.

### LUTTERWORTH BEAT SURGERIES

Wednesday 18<sup>th</sup> September 6.00pm - 7.00pm  
*Morrisons Superstore*, Bitteswell Road, Lutterworth  
Friday 20<sup>th</sup> September 11.30am - 12.30pm  
Market Square, Lutterworth  
Friday 20<sup>th</sup> September 2.00pm - 2.30pm  
Leys Crescent, South Kilworth

## POLICE FILE

Market Harborough & Lutterworth  
Police  
Dedicated Neighbourhood Team  
*Insp. Liz Perry*  
*Sgt. Charlie Davies*  
*PC James Day*  
*PC Jason Rainbow*  
*PCSO Alexander Caswell-Jones*  
*PCSO Steve Adams*

Market Harborough Police Station,  
Fairfield Road,  
Market Harborough 0116 222 2222  
[harboroughandwigston.npa@leics.police.uk](mailto:harboroughandwigston.npa@leics.police.uk)

CRIMESTOPPERS:

0800 555111

ACTION FRAUD:

[www.actionfraud.police.uk](http://www.actionfraud.police.uk)  
0300 123 2040

## FLOWERS BY HEATHER

Husbands Bosworth



*Flowers and floral arrangements for any occasion*  
*Call for a free consultation.*  
*Many years experience in the floral industry.*  
*Follow or like me on Facebook.*  
*Call me on 07773 063063*



*All aspects of vegetation management, landscape maintenance and weed control*

*Urban, highway, sports, industrial and domestic*

LanGuard Ltd • Packs Hill Farm • Station Road • Husbands Bosworth • Lutterworth • Leicestershire • LE17 6JN  
Tel: 01858 880 898 • Fax: 01858 880 720  
Email: [info@languard.co.uk](mailto:info@languard.co.uk)



# BOSWORTH IN FOCUS

## WILD ABOUT BOSWORTH

### Common green bottle fly *Lucilia Sericata*

This blowfly is found all around the world and while we find them irritating, it is difficult not to be impressed with their metallic colouration. Typical of flies, the life cycle of *L. Sericata* begins when the female deposits the egg on carrion, or sometimes in the hair of live animals. Depending on the temperature, the eggs hatch into larvae between a half and three days later, and as they feed on dead or the surface tissue of their host they go through three larval instars. During the third stage, they seek out a hidden location underground where they can pupate and hatch into adult flies - burial helping the pupa to avoid desiccation and predation. In cold climates, they may also overwinter in this state.

**The pros and cons of bottle flies:** The most serious con is that their maggots can infest sheep, causing lesions and skin infections (*myiasis*). They can contaminate food by spreading bacteria from infected material. Lastly, they can simply be b\*\*\*\*\*y annoying... Pros... they are a food source for insectivores and they remove pathogens and toxins from the environment. They are also of use to forensic entomologists in determining the time of death of a victim.

Significantly, it has recently been discovered that they harbour an antibiotic that is effective against strains of MRSA. Additionally, they are of service in 'maggot therapy' in which they debride wounds of necrotic material, combat bacterial infections and promote tissue regeneration.

\*\*\*\*\*

While researching this series of articles, I've made frequent use of two phone apps: *PlantNet Plant Identification*, which accurately identifies plants and trees. Secondly, *BirdNET*, which listens to bird songs, and like an expert twitcher, identifies the avian species. There is a third application called *SEEK*, which purports to be able to identify plants, insects, and fungi, but I've found it less reliable than the other two, and call me a *gallus gallus domesticus*, but I wouldn't eat a mushroom based on its identification!

Mike Chanter

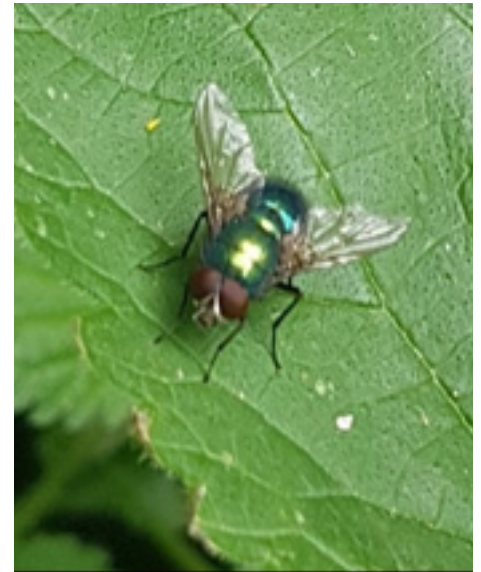
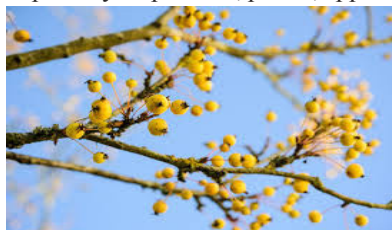
*Editor's Note: As this is Mike's last contribution, I would like to thank him for his inspiring articles relating to the flora and fauna that he has found locally. If anyone would like to 'fill' Mike's walking boots with a regular or one-off article on any subject of local interest please forward copy for consideration to the Editor: m.forman@talk21.com.*

### FORAGING: BEST BY WATER...

The Canal and River Trust are encouraging visitors to go foraging for the abundance of wild fruits and produce that grow along our canal banks. Getting out in the fresh air and enjoying some exercise is great for your health and wellbeing and now, as fruits ripen is the best time to go foraging. You could be enjoying a berry smoothie at the end of the day to celebrate! Growing alongside our towpaths, you will find blackberries, elderberries, damsons, crab apples, wild garlic and hazelnuts, and later in the season - wild mushrooms! There are also nettles, rosehips and dandelions for wine-making and sloes for your sloe-gin! Look out especially for domestic garden 'escapees'... especially raspberries, plums, apples, pears, cherries and horse radish.

#### Foraging top tips:

- Never pick anything that you can't identify
- Don't take more than you can use
- Wash everything before use
- 'Test' a small amount to check your tolerance
- Try not to trample on other forage or wildflowers
- Don't pick where it may be contaminated or treated with herbicide



### HISTORICAL EXHIBITION & COFFEE MORNING

Sharing our archive of Welford and Sulby images

Saturday 21<sup>st</sup> September

10.00am - 1.00pm

Welford Congregational Chapel, West End, Welford




- Toe nails cut
- Corns
- Verrucas
- Ingrown toe nails
- Hard dry skin
- Fungal nails
- Hopi candle ear wax removal
- Holistic therapies

**Home appointments**  
07842 266575

[www.happyfeetmidlands.com](http://www.happyfeetmidlands.com)



**HAPPY FEET**

Registered Foot Care Specialist







JLR Bespoke Property Renovations are an experienced and trusted Project Management and Construction team based in North Kilworth, Leicestershire.

If you have a project or idea in mind, please don't hesitate to contact us either by phone or via our website.  
Tel: 07844 741 261 (Jason Wright)  
[www.jlrbespokeproperties.com](http://www.jlrbespokeproperties.com)

# SCHOOL REPORT

HUSBANDS BOSWORTH C. of E. PRIMARY SCHOOL Head Teacher Alan Eathorne

Husbands Bosworth Church of England School is part of *Learn Academies Trust*. We aim to provide a rich and relevant curriculum that allows the children in the school to explore a variety of topic areas with the ambition of turning them into lifelong learners. We also ensure that we help all children to develop their spiritual, social and emotional understanding of themselves and of the world.

In order to help our children achieve their full potential we are committed to developing our staff so that we offer a high standard of teaching and learning. The staff take great pride in providing a high quality learning environment for the children to thrive in.



The following 'good quality' items are accepted for RE-USE:

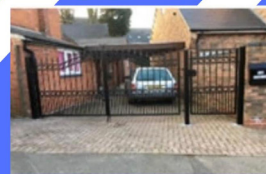
- ✓ Men's, Ladies' and Children's clothing
- ✓ Paired shoes (tied together or elastic band around)
- ✓ Handbags
- ✓ Hats and Bags
- ✓ Scarves and ties
- ✓ Jewellery
- ✓ Lingerie and Socks
- ✓ Belts
- ✓ Soft toys
- ✓ Household linen
- ✓ Curtains
- ✓ Towels
- ✓ Bedding (bed sheets, pillow cases and duvet covers)

Please note that the following are not accepted:

- ✓ Duvelts and Blankets
- ✓ Pillows and cushions
- ✓ Carpets, rugs and mats (including bath, shower and toilet mats)
- ✓ Soiled, painted, ripped or wet clothing
- ✓ School uniforms with and without logo
- ✓ Corporate clothing and workwear
- ✓ Textile off cuts, yarns or threaded material



## SAVE YOUR SUMMER CLEAR OUT FOR FOBS!



1a Hunters Close,  
Husbands Bosworth

**DROP OFF OPENS MONDAY  
26TH AUGUST  
CLOSES WEDNESDAY 25TH  
SEPTEMBER**

PLEASE LEAVE UNDER CARPORT TO  
KEEP DONATIONS DRY!



## BYGONE BOSWORTH

Images from the Historical Society's Archive Collection

This photograph from the Historical Society's Archive Collection is captioned: Wesley Bromell hoeing at Lodge Farm c1960.

Bromells had been forced to forfeit Lodge Farm in 1942 when much of the land was requisitioned by the Ministry for War to facilitate the building of the aerodrome. The farmhouse was demolished, although most of the farm buildings remained. It's not clear from this picture just what crop Wesley is hoeing, but it reminds us of the hard manual, and often lonesome, working life in agriculture at that time.

Before the widespread introduction of mechanisation and selective herbicides hand hoeing was the only effective method of weeding and 'singling'; taking out weak and superfluous seedlings leaving space for a row of healthy plants to grow. Mangolds and turnips were 'favourite' root crops to hoe, usually during the endless scorching days of high summer.



Placing the photograph in the present-day countryside, we appear to be looking east across the Welland valley with the trees of Bosworth Park in the far distance and Gravelpit Spinney in the centre middle distance. The land in the foreground has been excavated for minerals and reinstated with inert infill since the picture was taken.

## NEIL BURKE JOINERY

Supporting  
the  
Bosworth Bugle



## 'JJ's Kiddycare'



- \* GOOD \* Ofsted grading
- \* Government funded sessions available
- \* Full Day Care 0-5yrs
- \* Situated on a farm site between South Kilworth and Welford
- \* Breakfast and After School clubs. (4-14years)
- \* Holiday Clubs during all Northants & Leics school breaks

Tel no. 01858 575642

[www.jjs-kiddycare.co.uk](http://www.jjs-kiddycare.co.uk)

Email: [admin@jjs-kiddycare.co.uk](mailto:admin@jjs-kiddycare.co.uk)



## MORE BOSWORTH IN FOCUS

### ACTIVITY & INTEREST GROUPS

#### Art Group

Contact: Melvyn Forman 880281

#### All Saints Parish Church

Contact: Diana Jones 880741

#### Causeway Charity

Contact: Heather O'Connor 880165

#### Craft Group

Contact: Gail Wilmot 880413

#### Badminton Club

Contact: Ralph Horton 880526

#### HB School

Contact: Office 880212

#### Historical Society

Contact: Melvyn Forman 880281

#### Millennium Woodland Trust

Contact: Jackie Fletcher 880910

#### Parish Council

Contact: Derek Watson 881109

#### Playing Field & Pavilion

Contact: Patricia Hobson 880070

#### St. Mary's Roman Catholic Church

Contact: Matthew Pittam 01788 833547

#### Tennis Club

Contact: George Walker 880222

#### Village Lunch

Contact: Jo Hutton 07534 057575

#### Village Hall

Bookings: Lizzy Linnell-Johnson  
07766022901

### HISTORICAL SOCIETY

The Historical Society's winter programme of meetings commences on Wednesday, October 2<sup>nd</sup>, when we will be welcoming back villager Bozena Kuncewicz.

Bozena will be continuing on from her previous talk relating to her family's experiences in the Polish Resettlement Camp, this time looking at how the displaced Polish families, who were living in the former RAF Husbands Bosworth camp, integrated into the local communities.

Polish Resettlement Camps were established across Britain, after World War II, to house the thousands of Poles who had been displaced from their homeland. For many there was no desire to return to Poland after the cessation of hostilities where little of their familiar culture or infrastructure remained, especially when faced with the prospect of returning to a Russian controlled Communist state.

The Polish communities focused on their strong religious background, work ethic and family life, and soon found work locally as Britain gradually rebuilt after the war, many menfolk from Bosworth taking employment in Rugby.

*The talk is at 7.30pm, at the Sports Pavilion, Kilworth Road. All welcome.*

### DISCOVER LOCAL ART

Throughout September artists across Northamptonshire, Rutland and South Leicestershire will be opening their Art Studios. Visitors will be able to call in and chat, observe the artists at work and view some of the very creative examples of their art work, pottery, ceramics, glasswork and photography.

The focal point of this unique event will commence with a Central Exhibition at Lamport Hall, Northamptonshire, during which work from over 370 artists will be on display for the whole month.

As part of this important event, once again David Dunmore at Orchard House, 14 Mowsley Road, will open his studio on Saturday 14<sup>th</sup> and Sunday 15<sup>th</sup> September for visitors, 10.00am to 4.00pm. Original paintings, prints of his work and greeting cards will be available to purchase.

The Lamport Central Exhibition and Open Studio Events coincides with the Market Harborough Art Windows Event which will also be taking place throughout September. Members of the Harborough Artists Cluster will come together with shopkeepers, restaurants and local businesses to display a wide range of art and creative work across the town. *Look out for the Official Guide at all participating venues.*

### VILLAGE LUNCH

The next village lunch will be on Thursday September 26<sup>th</sup> at the Kilworth Springs Golf Club South Kilworth Road, North Kilworth. We meet at 12.30pm to eat at 1.00pm.

The Village Lunch is a great place for those new to the area, retired or living alone to meet up with old friends, catch up with all the local gossip and make new friends whilst enjoying an excellent home cooked meal in a relaxed and friendly atmosphere.

The cost of the two-course meal including tea/coffee and mints is £13.50 per person. All dietary needs are catered for, please ask for details.

Please call Jo on 07534057575 if you would like to book a place, arrange transport to the venue or for any other information.

*Next month's Village Lunch date:  
Tuesday, October 29<sup>th</sup>*

### CAUSEWAY COFFEE

Causeway Coffee mornings are held on the second Friday of each month at the Sports Pavilion, Kilworth Road and are open to anyone from the village who is retired and living alone.

The next Causeway Coffee is on September 13<sup>th</sup> 10.00am - 11.30am.

### CRAFT GROUP

The Craft Group meets on the second Wednesday of each month in the Committee Room of the Village Hall, 7.00pm to 9.00pm.

The Craft Group is a friendly and informal gathering where craft-minded people can pick up new ideas and practise their art or craft in a relaxed atmosphere away from the distractions of home life.

For more information please contact Gail on 880413.



### MARIE AINGE PHOTOGRAPHY

*Local Photographer taking  
bookings*

*As published in Nikon Magazine  
'Spring' a surprise photo session  
for your loved ones  
Slots now available*

*Prices are from £55 per session*

*View Facebook & Flickr.com*

*Contact 01858 880823*

*Email: aingel@sky.com*



# PARISH COUNCIL NEWS

**Minutes of the Ordinary Meeting of Husbands Bosworth Parish Council held on Tuesday 6<sup>th</sup> August 2024**

**Present: Full Council**

*Minutes of the Annual Meeting and the Parish Council Meeting held on 4<sup>th</sup> June 2024 were approved and signed as correct.*

## Finance

■ The monthly receipts and payments for June and July were presented and approved

## Planning Overview

■ The June and July 2024 planning application comment summary was presented and agreed

## Correspondence

■ The key points of correspondence received relating to the general tidiness of the village were discussed. Clerk was asked to prepare responses for Council approval

## Neighbourhood Plan Review (NPR)

■ Council noted a very positive meeting with Neighbourhood Plan consultant, Gary Kirk (*YourLocale*). After discussion it was agreed to undertake a review and to engage *YourLocale* to support the council through the process.

## Road Safety Cameras

■ After discussion it was agreed to purchase 2 road safety cameras to replace the old SID.

## HDC Community Grant Fund

■ Council agreed to monitor the grant options that appeared to be on offer from HDC's Community Grant Scheme

## Parish Maintenance

■ Council noted that the cemetery railings need refurbishment. Clerk was asked to enquire if this would qualify for Section 106 funding

■ Clerk was asked to obtain quotes for minor paintwork on the play equipment

■ It was agreed to get a quote from a tree surgeon to undertake crown-lift work to the trees on The Green

## Millennium Pavilion and Playing Field

■ Clerk advised that the hinge on the entrance gates to the car park needs attention. Clerk to follow up with the contractor

■ The installation of enhanced signing for the disabled parking spaces was agreed

■ Council noted that the older pavilion veranda posts need painting. It was agreed to request a quote

■ Options for artwork for the pavilion meeting room were discussed. An historical parish timeline was suggested and it was agreed to consult on the matter

■ A request from NKFC asking Council to consider an alcohol licence for the Sports Pavilion was rejected

■ In a national initiative Parish had been given a portrait of the King. After discussion it was agreed to hang this in the pavilion foyer

## Website Domain (.gov.uk)

■ After discussion it was agreed to keep the current domain and email address and not switch to .gov.uk

## Old Green Oak Tree Update

■ Clerk advised that further correspondence concerning the coronation oak had been forwarded to Parish Council insurers

## Any Other Business (for note only)

■ Following concerns raised by the householder, it was agreed to investigate the overgrown ditch/hedge behind the Scout HQ

■ Council noted that one of the oak trees in the dog walk is dead. Clerk asked to get quotes for a replacement tree

■ Clerk was requested to contact Mick George Ltd to request the reinstatement of regular Quarry Liaison meetings

■ Following a lack of communication LCC installed 'Footpath closed signs' on Dag Lane. It transpires that the closure relates to a public safety issue regarding a dangerously leaning wall

## Next meeting

**An Ordinary Parish Council Meeting on Tuesday 3<sup>rd</sup> September 2024 at 7.30pm in the Sports Pavilion**

*A full copy of the Minutes can be viewed or downloaded at: [www.husbandsbosworthpc.org.uk](http://www.husbandsbosworthpc.org.uk) or by request to the Parish Clerk.*

## LOCAL OFFICERS

**Husbands Bosworth Parish Council:  
Councillors**

Patricia Hobson (Chair) 880070

James Bolter

Melvyn Forman

Gareth Peel

Kay Gallagher

Thomas East

## Parish Clerk

Derek Watson

2a Mowsley Road

H.B. LE17 6LR Tel: 881109

[clerk@husbandsbosworthpc.org.uk](mailto:clerk@husbandsbosworthpc.org.uk)

## NOTICE

### Dag Lane- Pathway Closed Signs

*Leicestershire Highways have placed 'Pathway Closed' signs on Dag Lane between Berridges Lane and the kissing gate. This is because of the wall that is leaning into Dag Lane around the midpoint of this section, is deemed unsafe. Further information will be shared regarding remedial work, when known.*



**MILITARY VEHICLE DRIVING AND TANK BATTLES AT  
ARMOURGEDDON**  
Military Museum  
One of the Largest Collections of  
WWII Vehicles and Militaria in the Midlands.

Our under cover collection includes post war vehicles, Main Battle Tanks, as well as an excellent selection of other American, German and British vehicles. With interactive displays and lots of things to see. Visit on a game day (Saturday, Sunday or selected Wednesday—April to October) and you will get to see some of our vehicles driving around.

01858 880 239  
Chat to us Online  
[www.armourgeddon.co.uk](http://www.armourgeddon.co.uk)  
Office hours Monday to Friday 0900hrs—1700hrs



**DONALD CAMPBELL  
LANDSCAPES**  
All aspects of hard  
landscaping, including  
stone walling, pergolas,  
slabbing and patios.  
Husbands Bosworth  
area  
Tel. No. 07817 381 244

# CHURCH NEWS

All Saints Parish Church & St. Mary's Roman Catholic Church

## ALL SAINTS CHURCH NEWS

One of my favourite spiritual authors was a guy called Brennan Manning, a Roman Catholic priest in the USA. Brennan struggled with alcoholism his whole life, after periods of sobriety he was always 'falling off the wagon'. But this gave him an insight that few others have, of the grace and mercy of God, who when we fall, picks us up, dusts us off, and says, 'My dear child, let's try again...' If you haven't read any of Brennan's books, I recommend 'Abba's Child'.

Let me leave you with the startling prologue to that book;

*'On February 8<sup>th</sup>, 1956, in a little chapel in Loretto, Pennsylvania, I was ambushed by Jesus of Nazareth. The road I've travelled these last 38 years is pockmarked by disastrous victories and magnificent defeats, soul-diminishing successes and life-enhancing failures. Seasons of fidelity and betrayal, periods of consolation and desolation, zeal and apathy are not unknown to me. There have been times...*

- when the presence of God was more real to me than the chair I'm sitting on;*
- when the Word ricocheted like broken-backed lightning in every corner of my soul;*
- when a storm of desire carried me to places I had never visited;*

*And there have been times...*

- when I identified with the words of Mae West: "I used to be Snow White - but I drifted";*
- when the Word was as stale as old ice cream and as bland as tame sausage;*
- when the fire in my belly flickered and died;*
- when I mistook dried-up enthusiasm for gray-haired wisdom;*
- when I dismissed youthful idealism as mere naivete;*
- when I preferred cheap slivers of glass to the pearl of great price.'*

If you relate to any of these experiences, you might want to browse through this book and reclaim your core identity as Abba's Child."

Stephen †

## ST. MARY'S NEWS

□ **Evangelium** Commencing at 10.00am on Thursday 5<sup>th</sup> September.

A six week informal course exploring the Catholic Faith. For all who are curious to know more about the Catholic Faith and established Catholics also who want to think afresh. Please email: [leicestershire@ordinariate.org.uk](mailto:leicestershire@ordinariate.org.uk) for more details

□ **The World of Stained Glass** Thursday 5<sup>th</sup> September, 7.00pm.

Aidan McRae-Tompson is a world renowned stained glass artist and restorer with many significant commissions. He will talk about his craft and his vocation as a church artist. Refreshments afterwards.

□ **An afternoon of Reflection.** Tuesday 17<sup>th</sup> September, 12.00 -3.30pm.

Fr Matthew will be leading an afternoon of reflection, prayer and meditation.

□ **Sunday 22<sup>nd</sup> September** 10.00am Traditional Harvest Festival Mass, followed by a Harvest Lunch at The Shoulder of Mutton, Foxton

□ **Heroines of the Reformation** Sunday 29<sup>th</sup> September, 3.00pm

An engaging talk of the often unknown recusant woman during the reigns of Elizabeth I and James I. The talk will be given by Tim Guile, Chairman of the English Catholic History Association. Refreshments afterwards.

□ **Usual Masses** Tuesday 9.30am, Wednesday 7.00pm, Thursday 10.00am

□ **Evensong** Every Wednesday at 6.30pm

Father Matthew †

## †CHURCH SERVICES †

### Hexagon Benefice

#### September

Sunday 1<sup>st</sup> 10.30am Shearsby

Sunday 8<sup>th</sup> 10.30am

Harvest Festival B'horpe

Sunday 15<sup>th</sup> 10.30am Thedd.

3.00pm Knaptoft

Sunday 22<sup>nd</sup> 10.30am HB

Sunday 29<sup>th</sup> 10.30am

Harvest Festival Arnesby

All Saints Church invites you to an informal, warm and friendly mid-week communion every Wednesday 10.00am

Coffee/teas served afterwards

#### Senior Churchwarden:

Di Jones 880741

#### Curate:

Stephen March

[Stephen.March@LeicesterCofE.org](mailto:Stephen.March@LeicesterCofE.org)

### St Mary's Roman Catholic Church

#### Contact:

Fr. Matthew Pittam 01788 833547

[E:matthewpittam@yahoo.co.uk](mailto:E:matthewpittam@yahoo.co.uk)

### Parish Notices

#### Avril Atkins

formerly of Stud Farm

Passed away 22<sup>nd</sup> July

Age 88 years

#### Tom Ewart

of School Lane

Passed away July 28<sup>th</sup> 2024

Age 79 years

#### Rev. John Hickling

formerly rector of this Parish

Passed away 31<sup>st</sup> July 2024

Age 90 years

† R.I.P †

#### Holy Matrimony

Friday, August 9<sup>th</sup>

Gavin Bicknell & Penny Begley

Saturday, August 17<sup>th</sup>

Nigel Timms & Cheryl Harrison



**INMAN HALL BUILDING & PLASTERING**  
FINE BUILDING AND PLASTERING SERVICES

- RENOVATION
- EMERGENCY REPAIRS
- ROOFING
- EXTENSIONS
- BUILDING MAINTENANCE
- PLASTERING

CALL GRAY INMAN-HALL : 07938217578  
OR EMAIL : [INMAN-HALLBUILDING@HOTMAIL.COM](mailto:INMAN-HALLBUILDING@HOTMAIL.COM)

## HAIR BY LYNN DY

Award winning hair stylist & colour specialist



"Now welcoming everybody to my hair studio in Husbands Bosworth for cuts, colours, blow-dries & wedding hair"



Appointment only - 07808 513283

[lynn dy@hairbylynn dy.com](mailto:lynn dy@hairbylynn dy.com)



## FORTHCOMING EVENTS

- Tuesday September 3<sup>rd</sup> Parish Council meeting, 7.30pm Sports Pavilion
- Friday September 13<sup>th</sup> Causeway Coffee Morning, 10.00am - 11.30am, Sports Pavilion
- Monday September 2<sup>nd</sup> Mobile library (*Note: New schedule and timings - see below*)
- Saturday September 21<sup>st</sup> W&SHS Exhibition & Coffee Morning, 10.00am - 1.00pm Congregational Chapel, West St.
- Monday September 23<sup>rd</sup> Mobile library
- Thursday September 26<sup>th</sup> Village Lunch, 12.30pm, Kilworth Springs Golf Club, South Kilworth Road,
- Tuesday October 29<sup>th</sup> Village Lunch
- Sat. Nov. 30<sup>th</sup>/Sun. Dec. 1<sup>st</sup> All Saints CHRISTMAS TREE FESTIVAL returns!

## LOCAL PLANNING NEWS

The following applications have been submitted to Harborough District Council:

- 24/00810/FUL Conversion of barn to dwelling with associated access, Wheatsheaf Lodge, Bell Lane

Recently determined applications:

- 24/00729/PCD [*Approved*] Discharge of Condition 2 (window details) of 23/01360/LBC, Canal Wharf, Welford Road
  - 24/00569/FUL [*Approved*] Erection of a part single part two storey rear extension, 23 School Lane
  - 24/00768/FUL [*Approved*] Erection of a single storey building adj. to existing surgery, Husbands Bosworth Surgery, 1 Marsh Drive
- Current applications may be inspected during normal working hours at the Council Offices, The Symington Building, Adam & Eve Street, Market Harborough or at the Parish Office, 2a Mowsley Road.*

Planning applications and other aspects of local government can be viewed on-line at [www.harboroughonline.co.uk](http://www.harboroughonline.co.uk)

## COMMUNITY GRANT SCHEME

Harborough District Council have recently released details of their £1m Community Grant Fund - a focused grant scheme which aims to enable the delivery of suitable community-led projects and initiatives at parish level.

To be eligible, applications will need to demonstrate that the proposal aligns with at least one of the following criteria:

- *Creates a sense of community pride*
- *Promotes health and well-being*
- *Promotes sustainability issues*
- *Promotes the local economy*

Applications on behalf of constituted organisations within the community must be made through the Parish Council and be endorsed by the District Councillor. For more information, in the first instance please contact Derek Watson, Parish Clerk, 2a Mowsley Road.

The Fund allocation is relative to the scale of growth within their communities, based on completed or committed development over the period 2020-23. Husbands Bosworth is one of five 'medium villages' within this hierarchy and has been allocated £20,000 for qualifying projects.

## LUTTERWORTH BANKING HUB

19 High Street Lutterworth  
The Hub is operated by the Post Office and is open 5 days a week, 9.00am to 5.00pm.

The Hub provides customers of major banks with transaction facilities, including paying in cash and cheques, withdrawing cash, paying utility bills and balance checks.

A Community Banker service, where customers can talk to their own bank about more complicated issues are provided one day a week:

- Monday: Barclays
- Tuesday: Natwest
- Wednesday: Santander
- Thursday: HSBC
- Friday: Lloyds



## MOBILE LIBRARY

it's all change for the Mobile Library...

New day and times: Monday every three weeks

Stops & Times (See dates above)

Welford Road: 12.05pm - 12.30pm

Butt Lane: 12.40pm - 1.00pm

Mobile library Service 0116 3052695 [libraries@eics.gov.uk](mailto:libraries@eics.gov.uk)

## District of Harborough



We collect up to 3 large household items or 12 sacks of waste for a charge of £37.16.  
Search: Harborough Bulky Waste

May-24				
Mo	Tu	We	Th	Fr
		1	2	3
6	7	8	9	10
13	14	15	16	17
20	21	22	23	24
27	28	29	30	31

## COMPLETE CAR CARE

Accident repair specialist

Bodywork, dent, scratch and stone-chip repair

Servicing, alloy refurbishment, welding

MoT repair

Valeting, full body polish

Parking sensors, tyres & exhausts, etc. fitted

Call Ben on 01858 880404

[bencompletotecarcare@outlook.com](mailto:bencompletotecarcare@outlook.com)

## F&W Plumbing & Heating Services Ltd

Based in North Kilworth

- Bespoke bathroom & kitchen design and installation
- All types of wall and floor tiling
- Hot and cold water systems
- Unvented hot water systems

Contact Jason on 07866741261

Email: [jasonfandw@hotmail.com](mailto:jasonfandw@hotmail.com)

[www.fandwplumbingandheatingservices.co.uk](http://www.fandwplumbingandheatingservices.co.uk)

Over 30 years experience in designing and installing contemporary and traditional kitchens and bathrooms

Project manage personally with all associated trades for a co-ordinated high quality finish with minimum disruption