

## LUTTERWORTH EAST

**The eagle-eyed traveller will have noticed that preparatory work for the Lutterworth East development has begun in earnest recently.**

The locally controversial scheme to build up to 2,750 new homes with associated schools, neighbourhood and community space, establish over 240 acres of green space and provide business space to support 5,000 new jobs, was given the green light in 2022, and is a key element of Harborough District Council's Local Development Plan.

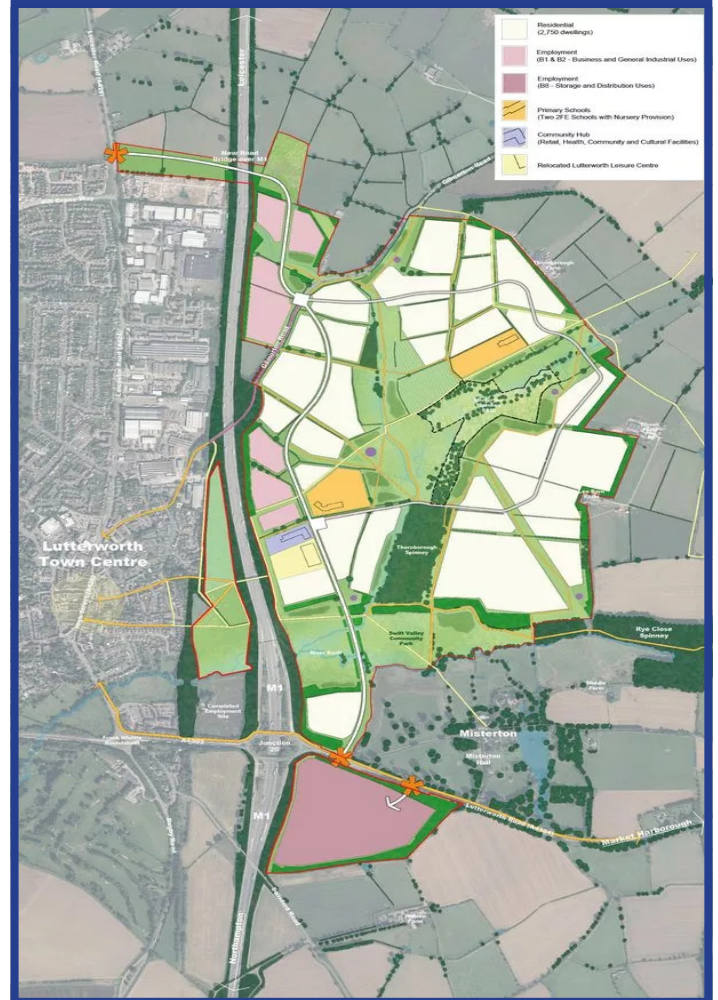
Recently more detailed proposals for how the development will be 'phased' and how it is likely to be laid out within the 550 acre site have been tabled, with a detailed planning application currently being considered by Harborough Planners. (24/00932/VAC - See Local Planning News on p.8)

The proposal is to phase the development, by building the commercial distribution centre first to encourage the employment element, which will generate the need for local housing. As part of this integrated and sustainable approach, a small business park and office space, mixed housing and the related social infrastructure will be provided in phases as the development progresses.

Work on the access points has already begun, and more detailed proposals for the distribution centre element are expected to be put before Harborough Planners this autumn, with work hoped to start early next year.

\*\*\*\*\*

Locally, concerns have been raised about the effect of the increased heavy goods vehicle traffic that will service the commercial elements of the site, in particular during the development stages, with two of the three traffic access points opening onto the A4304 corridor.



Users of the canal towpath will welcome the Canal and River Trust's recent installation of a 'wobbly bridge' over the Grand Canyon. Whilst we are pleased that the obstacle has received attention, it is hoped that this is only a temporary 'fix'...

### TIP OFFS...

Leicestershire County Council has recently revised the opening times of their Waste & Recycling Sites. From Saturday October 1<sup>st</sup> to March 31<sup>st</sup>, autumn and winter opening times will apply, with all county council waste site opening times changing to 9.00am - 4.00pm, on the days they are open. Last entry at all sites will be 3.55pm.

The County Council approved a compromise on closures and opening times following mass opposition from the public to their proposed plan to shut the Market Harborough Riverside facility completely, as part of county-wide cost-cutting exercise. The site will now be open 3 days a week, Thursday to Saturday.

In order to allow the Market Harborough site to remain open, the tip at Kibworth will see its opening days reduced down to four a week.

**HUSBANDS BOSWORTH CE PRIMARY SCHOOL**

**Ofsted Good Provider**

"All three of my children have experienced the very best education and have had the best time while at Husbands Bosworth. It might be a small school, but it goes above and beyond always." Parent, 2024

Book your school tour today for September 2025 EYFS starters

01858 880 212 or office@hsb.learnat.uk  
www.husbandsbosworth.leics.sch.uk

Learn-AT

## BUGLE POSTBAG

*From Rowan & Willow Songsmith, Community Singing Group Leaders*

### Community Choir Launch

Do you love to sing? Whether only in the shower - or at every opportunity - come and sing with us! We are starting a Community Singing group to learn some Christmas songs and carols from the 'folk' tradition, in glorious four-part harmony. We will then sing them as part of the afternoon Carol Service on 8th December in the beautiful St. Mary's Church Husbands Bosworth.

No auditions - no need to read music, though words and 'dots' are provided, as well as teaching MP3 sound files.

Led by Rowan and Willow Songsmith, experienced Community Singing group leaders, everyone is welcome! "Come, come, whoever you are!"

Taster session on Tuesday 1<sup>st</sup> October 7.00pm - 9.00pm at St. Mary's Church, meeting every Tuesday until 3<sup>rd</sup> December.

No charge but donations welcomed.

To book email: [willow.songsmith@icloud.com](mailto:willow.songsmith@icloud.com) or ring 0116 283 5222 - or even just turn up...

We look forward to singing with you!

*From Fr. Matthew Pittam, St. Mary's Church*

We have recently installed a new organ in church and have removed the venerable Victorian harmonium from church and put it in store. We ideally we would like to find a new home for this piece of Bosworth history. If you are interested or for more information please contact me, Fr. Matthew: [fr.matthew.pittam@rcaob.org.uk](mailto:fr.matthew.pittam@rcaob.org.uk)

## POLICE FILE



To contact your Dedicated Neighbourhood Team (DNT) online, use the quick and simple online contact tool - Search *Lutterworth Police*. You will be asked a few questions to make sure your query gets to the right place.

### LUTTERWORTH BEAT SURGERIES

#### October

Saturday, October 12<sup>th</sup>, 12.00pm - 1.00pm

*Palmer's Garden Centre, Bitteswell Road, Ullesthorpe*

There is evidence to suggest that vehicle crime; notably the theft of vehicles, is increasingly being controlled by organised crime groups. The types of vehicles that are being targeted tend to be high-end premium vehicles that are either dismantled systematically for their parts or shipped out of the country to a ready market abroad. It is also clear that certain vehicles, especially sports cars and luxury models are often stolen to order.

The National Vehicle Crime Intelligence Service (NAVCIS) is working closely with vehicle manufacturers to improve the resilience of vehicle-fitted anti-theft devices. However it is clear that even the most sophisticated devices can be overcome by the equally ingenious criminals and simple measures taken by car owners such as parking in well-lit areas where there is passing car or pedestrian traffic and physical devices such as steering or pedal locks are the most effective in deterring theft.

## THE BUGLE TEAM

*Editor:*

Melvyn Forman

10 Church Lane Tel: 880281

Email: [m.forman@talk21.com](mailto:m.forman@talk21.com)

*Treasurer & Advertising:*

Ralph Horton

18 Highcroft Tel: 880526

*Contacts:*

Mike & Sylvia Price

3 Highcroft Tel: 880902

Jo Horton

18 Highcroft. Tel: 880526

Frances Smith

10 Butt Lane Tel: 880225

Penny Mattock

9 Fernie Court Tel: 881140

Heather O'Connor

16 Fernie Court Tel: 880165

*Postal Subscription & distribution:*

Melvyn Forman Tel: 880281

Email: [m.forman@talk21.com](mailto:m.forman@talk21.com)

[www.husbandsbosworth.info](http://www.husbandsbosworth.info)

COPY DEADLINE  
15<sup>th</sup> OF THE MONTH  
PRECEDING PUBLICATION

## POLICE FILE

Market Harborough & Lutterworth Police

Dedicated Neighbourhood Team

*Insp. Liz Perry*

*Sgt. Charlie Davies*

*PC James Day*

*PC Jason Rainbow*

*PCSO Alexander Caswell-Jones*

*PCSO Steve Adams*

Market Harborough Police Station,  
Fairfield Road,

Market Harborough 0116 222 2222

[harboroughandwigston.npa@leics.police.uk](mailto:harboroughandwigston.npa@leics.police.uk)

CRIMESTOPPERS:

0800 555111

ACTION FRAUD:

[www.actionfraud.police.uk](http://www.actionfraud.police.uk)

0300 123 2040



- Toe nails cut
  - Corns
  - Verrucas
  - Ingrown toe nails
  - Hard dry skin
  - Fungal nails
  - Hopi candle ear wax removal
  - Holistic therapies
- Home appointments  
07842 266575

[www.happyfeetmidlands.com](http://www.happyfeetmidlands.com)



HAPPY  
FEET

Registered  
Foot Care  
Specialist

JR BESPOKE  
PROPERTY RENOVATIONS



J.R Bespoke Property Renovations are an experienced and trusted Project Management and Construction team based in North Kilworth, Leicestershire.

If you have a project or idea in mind, please don't hesitate to contact us either by phone or via our website.  
Tel: 07846 741 261 (Jason Wright)  
[www.jrbespokeproperties.com](http://www.jrbespokeproperties.com)



# BOSWORTH IN FOCUS

## WEATHER WATCH

Probably the most famous weather quote made is the one by BBC weather forecaster, Michael Fish on October 15<sup>th</sup> 1987: 'Earlier on today, apparently, a woman rang the BBC and said she'd heard that there was a hurricane on the way. Well, if you are watching, don't worry - there isn't .....'. Conveniently forgotten is that he continued by saying that the weather would become very windy. In actual fact the infamous storm in 1987 only affected the southern part of the UK not the whole of the country.

October is renowned for stormy and windy weather - last year Storm Babet on October 18<sup>th</sup> had the first red warning for rain since Storm Dennis in February 2020. It was also the sixth wettest October since 1890 (in the UK). October is thought of as the main autumn month although meteorological autumn runs from September 1<sup>st</sup> until November 30<sup>th</sup> and is when the trees colour change is usually the most vibrant and when we usually experience the first frosts of the season. Scottish and Welsh mountains may well have snowfall, but in October 2008 snow fell in southern England.

There are a lot of old weather lore sayings throughout the year. Some for October are: Much rain in October, much wind in December; Warm October, cold February; If October bring heavy frosts and winds, then will January and February be mild. Of course it is all chance, with not much in fact, and is mainly dependant on the position of the jet stream.

In 1993 the month had almost all known varieties of weather in its 31 days from sun to hard frosts, downpours and floods to dismal grey and boring. Overall 1993 was particularly cold year, with Dalwhinnie in Scotland recording the lowest ever October temperature of -11.7°C.

*Weather Watcher*

*Editor's Note: 18 people died and 15 million trees were flattened, as winds reached speeds of 115mph. In Kent, six of the famous seven oaks in Sevenoaks were felled!*



*Jessica Mary*  
FLOWERS

**DOOR WREATH WORKSHOPS**  
Join us on Friday 6<sup>th</sup> or Saturday 7<sup>th</sup> December, at Theddingworth Village hall and create your own festive bespoke door wreath! Be sure to book quickly, places are limited as we are keeping these workshops small so that everyone has space & can have plenty of guidance.  
All materials are included as well as fabulous accessories to decorate, just bring your scissors, an apron if you wish and some festive flair! Tea, coffee & sweet treats included.  
Book at: [shop.jessicamaryflowers.co.uk](http://shop.jessicamaryflowers.co.uk)

## SCOUTING FOR BOSWORTH

All three sections of 1st Kilworth Scout troop have now returned after the summer break, and are ready for action.

We are very much indebted to Nicky, who answered our call for help. With Nicky on board our young people can now look forward to continuing their Scouting journeys.

As always, our doors are open to new youngsters and also to adult volunteers. Both Beavers and Cubs currently have spaces for new starters. Please email: [kilworthcubs@gmail.com](mailto:kilworthcubs@gmail.com) to register your interest.

*Louise Hepworth*

**1950 FESTIVAL OF BOATS & ARTS**  
SATURDAY 07 - SUNDAY 08 JUNE 2025  
AT FOXTON, WITH A CAVALCADE OF BOATS TO MARKET HARBOROUGH ON THE SATURDAY

HISTORIC NARROWBOATS  
CRAFT STALLS LOCAL FOOD & DRINK  
ROVING CANAL TRADERS  
EXHIBITIONS FAMILY ACTIVITIES  
THE QUORN UKULELE ORCHESTRA

Free Admission Donations Welcomed

## WELFORD WORKS OF ART

Welford Watercolour Artists Group Annual Exhibition and sale of works will be on Saturday, October 26<sup>th</sup> and Sunday 27<sup>th</sup> 10.00am to 4.00pm Welford Village Hall, West Street.

Twelve local artists, drawn from local villages, will be hosting an exhibition of their work carried out over the last twelve months, and sale of works.

This year we will be raising funds for RNLI through the sales of teas and coffees and big pieces of cream cake and a percentage of sales of original artworks, prints and very attractive greetings cards! In addition there will be a Tombola Stall.

This event has proved very popular over the years and we look forward to you joining us. *The group meets each Wednesday, their work reflecting their very varied interests.*

**COMPLETE CAR CARE**  
Accident repair specialist  
Bodywork, dent, scratch and stone-chip repair  
Servicing, alloy refurbishment, welding  
MoT repair  
Valeting, full body polish  
Parking sensors, tyres & exhausts, etc. fitted  
Call Ben on 01858 880404  
[bencompletotecarcare@outlook.com](mailto:bencompletotecarcare@outlook.com)

**'JJ's Kiddycare'**

- \* GOOD \* Ofsted grading
- \* Government funded sessions available
- \* Full Day Care 0-5yrs
- \* Situated on a farm site between South Kilworth and Welford
- \* Breakfast and After School clubs. (4-14years)
- \* Holiday Clubs during all Northants & Leics school breaks

Tel no. 01858 575642  
[www.jjs-kiddycare.co.uk](http://www.jjs-kiddycare.co.uk)  
Email: [admin@jjs-kiddycare.co.uk](mailto:admin@jjs-kiddycare.co.uk)

# SCHOOL REPORT

HUSBANDS BOSWORTH C. of E. PRIMARY SCHOOL Head Teacher Alan Eathorne



Well done to the artistic members of the FOBS Team and their parent helpers who recently brightened up the entrance to the Annex rooms with this colourful mural on the dark side wall. A wonderful welcome for staff, pupils and visitors as they arrive on a dark day...

## BYGONE BOSWORTH

*Images from the Historical Society's Archive Collection*

Our oldest village resident, Aneurin Owen celebrates his 100<sup>th</sup> birthday on the 30<sup>th</sup> November. Born in a small farming community in Wales, Aneurin, fondly known as Taffy, came as a young boy to Husbands Bosworth on Michaelmas Day, 1934. Welsh being his family's first language, he came with a strong Welsh identity but quickly settled in at the village school. The family were farmers and, along with many Welshmen, came to the local area to take on tenanted farms in the lush pastureland of the Welland valley that were struggling to find tenants following the Depression. His first home here was Railway Farm, (now White House Farmhouse), in Honeypot Lane. In 1938 Taffy's father took the tenancy at Holloway Farm on the Bosworth Estate, with the understanding that the landlord would build a house on the land. Taffy recalls that when war broke out the promise of a new house was forgotten and the family moved to Foxbury on High Street whilst still working Holloway Farm. Sadly, his father died after an accident on the farm, and whilst only 15 years old, Taffy took on the responsibility of running the farm with his mother.

He always wanted to join the RAF, and at the age of 17<sup>3</sup>/<sub>4</sub> he volunteered to join up, training as a wireless operator. He was assigned to 153 Squadron, undertaking bombing raids over industrial Germany and over the German deep-water ports during the latter stages of the war. In April and May 1945, Taffy's crew took part in Operation *Manna*, dropping food and supplies into Holland, which at the time was still under German Occupation. After the war, despite wanting to stay in the RAF and train to be a pilot, he was needed back home, and returned to help run the family farm, and in 1948 Taffy met and later married village girl, Peggy Peake, and had two boys John and Glyn.

Taffy has been involved with Husbands Bosworth and Theddingworth Sheep Dog Trials from a very young age, and after the war, when the Trials resumed, Taffy joined the organising committee, eventually taking on the role of Treasurer and also later time-keeper and judge.

Throughout his life Taffy has made a huge contribution to Husbands Bosworth. He was a founding member of the Harborough & District Farmers Club and the Harborough & District Shooting Club, a friend and member of the Historical Society, a member of the local branch of the Royal British Legion and, as a dedicated father, he was heavily involved in the fore-runner of FOBS, Husbands Bosworth PTA. To mark the new Millennium, Taffy helped the village to purchase land for The Millennium Wood, which he officially opened in 2002, although he declined an invitation to become a Trustee as he said that he was too old... To 'crown' Taffy's achievements, last year he was invited, along with 16 other RAF veterans, to afternoon tea with King Charles at RAF Coningsby!

*Join us as we celebrate the life of Taffy in words and pictures in the Village Hall on Sunday, October 27<sup>th</sup>, 3.00pm - 5.30pm.*



*All aspects of vegetation management, landscape maintenance and weed control*

*Urban, highway, sports, industrial and domestic*

LanGuard Ltd • Packs Hill Farm • Station Road • Husbands Bosworth • Lutterworth • Leicestershire • LE17 6JN

Tel: 01858 880 898 • Fax: 01858 880 720

Email: [info@languard.co.uk](mailto:info@languard.co.uk)

## NEIL BURKE JOINERY

*Supporting  
the  
Bosworth Bugle*





## MORE BOSWORTH IN FOCUS

### ACTIVITY & INTEREST GROUPS

#### Art Group

Contact: Melvyn Forman 880281

#### All Saints Parish Church

Contact: Diana Jones 880741

#### Causeway Charity

Contact: Heather O'Connor 880165

#### Craft Group

Contact: Gail Wilmot 880413

#### Badminton Club

Contact: Ralph Horton 880526

#### HB School

Contact: Office 880212

#### Historical Society

Contact: Melvyn Forman 880281

#### Millennium Woodland Trust

Contact: Jackie Fletcher 880910

#### Parish Council

Contact: Derek Watson 881109

#### Playing Field & Pavilion

Contact: Patricia Hobson 880070

#### St. Mary's Roman Catholic Church

Contact: Matthew Pittam 01788 833547

#### Tennis Club

Contact: George Walker 880222

#### Village Lunch

Contact: Jo Hutton 07534 057575

#### Village Hall

Bookings: Lizzy Linnell-Johnson

07766022901

### VILLAGE LUNCH

The next village lunch will be on Tuesday October 29<sup>th</sup> at the Kilworth Springs Golf Club South Kilworth Road, North Kilworth. We meet at 12.30pm to eat at 1.00pm.

The Village Lunch is a great place for those new to the area, retired or living alone to meet up with old friends, catch up with all the local gossip and make new friends whilst enjoying an excellent home cooked meal in a relaxed and friendly atmosphere.

The cost of the two-course meal including tea/coffee and mints is £13.50 per person. All dietary needs are catered for, please ask for details.

Please call Jo on 07534057575 if you would like to book a place, arrange transport to the venue or for any other information.

*Next month's Village Lunch date:*

*Wednesday, November 27<sup>th</sup>*

### CAUSEWAY COFFEE

Causeway Coffee mornings are held on the second Friday of each month at the Sports Pavilion, Kilworth Road and are open to anyone from the village who is retired and living alone.

Come a long and have a cuppa, cake and a chat in a warm and friendly atmosphere. New friends are assured a warm welcome! The next Causeway Coffee is on Friday, October 11<sup>th</sup> 10.00am - 11.30am.

### ART GROUP

*We've changed our meeting times!*

Bosworth Art Group is a small, friendly and informal group of arty minded souls meeting on alternate Tuesdays, 1.00pm to 3.00pm in the Sports Pavilion, Kilworth Road. Meetings are on a pay-as-you-go basis, £2.50 per session to cover room hire and coffee.

The group is self tutored and all mediums and skill levels are welcomed. Interested? Come along and try a session...

Dates for October are: Tuesdays, 15<sup>th</sup> and 29<sup>th</sup>. For details call Melvyn on 880281.

### HISTORICAL SOCIETY


For the first meeting of our Winter Programme we will welcome back Society member, Bozena Kuncewicz, who will continue the story of the thousands of displaced Polish families who chose to remain in this country in the years following the war. Much of Bozena's talk will centre around the experiences of her own family and relatives and their friends, who were temporarily billeted at the former RAF Husbands Bosworth camp at Sulby.

The talk is at 7.30pm on Wednesday, October 2<sup>nd</sup> at the Sport Pavilion, Kilworth Road.

Please note that the Parish Council has recently installed roadside lighting at the Pavilion, which will light the way for those walking to the venue!

*Please note that we will be taking subscriptions at this meeting.*

*Subscription for the whole year is still only £12. Casual visitors and friends are always welcome on a per meeting basis, when a door-charge of £2.50 is requested.*



**Polish Communities**  
in  
**British Towns and Cities**

After the demobilisation of 250,000 Polish soldiers fighting outside Poland and with the dangers of returning back home, these young men and women set about looking for work.

With help from the British Resettlement Corps, they found employment in towns and cities and began creating communities in exile.

The presentation includes:

- Brief history of the Polish Forces in WW2
- Role of ex combatants in establishing the Polish communities
- Challenges of maintaining culture and language
- Integration and assimilation
- The impact of the new wave of Polish immigrants since 2006

Speaker: Bozena Kuncewicz Email: bozena\_k@icloud.com Tel: 07712472799

The hour long talk is illustrated with slides, videos, photos and talking heads.

### CRAFT GROUP

The Craft Group meets on the second Wednesday of each month in the Committee Room of the Village Hall.

This is a friendly and informal gathering where craft-minded people can pick up new ideas and practise their craft in a relaxed atmosphere away from the distractions of home life.

The next meeting is on Wednesday, October 9<sup>th</sup>, 7.00pm to 9.00pm.

For more information please contact Gail on 880413, or just come along..

### F&W Plumbing & Heating Services Ltd

Based in North Kilworth

- Bespoke bathroom & kitchen design and installation
- All types of wall and floor tiling
- Hot and cold water systems
- Unvented hot water systems

Contact Jason on 07866741261

Email: [jasonfandw@hotmail.com](mailto:jasonfandw@hotmail.com)

[www.fandwplumbingandheating.com](http://www.fandwplumbingandheating.com)

Over 30 years experience in designing and installing contemporary and traditional kitchens and bathrooms

Project manage personally with all associated trades for a co-ordinated high quality finish with minimum disruption

### FLOWERS BY HEATHER

Husbands Bosworth



*Flowers and floral arrangements for any occasion*

*Call for a free consultation.*

*Many years experience in the floral industry.*

*Follow or like me on Facebook.*

*Call me on 07773 063063*

# PARISH COUNCIL NEWS

## Report of the Parish Council Meeting held on Tuesday, September 3<sup>rd</sup> 2024

**Present:** 5 Council members and one visitor

Minutes of the previous meeting were presented and approved

### Matters Arising (for report only)

- Clerk to follow up with Languard re spraying of Pavilion car park.
- Clerk confirmed the shutter repair work had been completed on 03/09/2024.
- Clerk confirmed that due to the negative response received from LCC in relation to these Speed indicator devices, the Clerk had not proceeded with the purchase approved at the previous meeting. The LCC response will be further investigated and reviewed at the October OPCM.

### Finance

- Council accepted the August 2024 bank statements and reports presented, as an accurate representation of the financial transactions undertaken by the Clerk **Neighbourhood Plan Review (NPR)**

- It was agreed to set up an initial meeting with our consultant in early October to assess the process and funding options

### HDC Community Grant Fund

- Clerk advised he had one initial enquiry from an interested party in relation to the fund. Chair and Clerk to attend Parish Liaison meeting where the details of the scheme will be discussed

### Alcohol Licence for the Sports Pavilion

- Council reviewed an appeal from NKFC, requesting permission to apply for an alcohol licence for the sports pavilion. After discussion a six-month trial period was agreed

### Parish Maintenance

- Clerk advised that refurbishment of the railings at cemetery would not satisfy Section 106 fund criteria. However, updating the cemetery pathways would be an appropriate project. Clerk would start some initial enquiries
- Council accepted a quote for tree work on The Green
- Council to obtain quotes for ditch and pathway clearance near Scout Hut and roadside hedge/fencing on Kilworth Road

### Millennium Pavilion and Playing Field

- Clerk has not yet sourced a quote for painting the pavilion veranda columns
- Council discussed proposals for wall-art for pavilion meeting room and agreed to consider a time-line frieze and agreed a budget.

### Commemorative Plaque - King Charles III Coronation Oak

- Council agreed plaque design and wording for the Oak Tree on the Playing Field

### Replacement Oak Tree - Dog Walk

- Council agreed a quote for replacing the existing dead oak tree in the Dog Walk

### Christmas

- A quotation for providing the 2024 Parish Christmas Tree was accepted
- A proposal to decorate the High Street planters for the 2024 festive period and budget was agreed

### Quarry Liaison Meeting

- The quarry operator has confirmed that they would establish a Liaison Group and arrange a meeting as soon as practical

### Any Other Business

- Clerk advised of a late notification that the rent for the Parish Office would rise with the next payment. *(This item to be added to the October Agenda)*

### Date and time of next meeting

The next meeting will be an Ordinary Parish Council Meeting on Tuesday October 1<sup>st</sup> at 7.30pm in the Sports Pavilion

**A full copy of the Minutes can be viewed or downloaded at: [www.husbandsbosworthpc.org.uk](http://www.husbandsbosworthpc.org.uk) or by request to the Parish Clerk.**

## LOCAL OFFICERS

### Husbands Bosworth Parish Council: Councillors

Patricia Hobson (Chair) 880070  
James Bolter  
Melvyn Forman  
Gareth Peel  
Kay Gallagher  
Thomas East

### Parish Clerk

Derek Watson  
2a Mowsley Road  
H.B. LE17 6LR Tel: 881109  
clerk@husbandsbosworthpc.org.uk

### District Councillor

Amanda Nunn  
a.nunn@harborough.gov.uk

### County Councillor

Blake Pain  
Tel: 01858 411021  
blake.pain@leics.gov.uk

### Member of Parliament

Alberto Costa  
Tel: 01455 283594  
office@albertocosta.org.uk



**BEGLEY'S**  
Established 50 Years  
GENERAL JOINERY SPECIALISTS

Free estimates  
All items can be viewed at Shearsby Workshop

Tel: 0116 2478755 (day)  
01858 880569 (eve)  
Email: andybeg@hotmail.co.uk



**HAIR BY LYNNDY**  
Award winning hair stylist & colour specialist

Instagram and Facebook icons

"Now welcoming everybody to my hair studio in Husbands Bosworth for cuts, colours, blow-dries & wedding hair"

Appointment only - 07808 513283  
lynndy@hairbylynndy.com



# CHURCH NEWS

All Saints Parish Church & St. Mary's Roman Catholic Church

## ALL SAINTS CHURCH NEWS

*A MetholatedAngloBaptistPenteCatholarian*

I met a man, who when asked about his religious identity, always gives the response, "I am a MetholatedAngloBaptistPenteCatholarian!" It was his way of saying that he had a mongrel past in terms of church experience, that he had benefitted from a wide variety of different church traditions and that he was uncomfortable with labels that pigeon-hole people into narrow categories.

I have some sympathy with his response. Although I am an Anglican Priest, I was raised in a non-conformist church where my father was the pastor. I have grown in my faith through contact with a great variety of different Christian traditions, either through personal contact of those traditions, through books from different traditions or through attendance at services and events in different traditions.

It has been my experience that God is at work in many, if not all, of the different Christian traditions. All have their strengths - most have some weaknesses...

Each of those traditions is seeking to:

- live out an authentic response to the person of Jesus Christ
- to take his teaching seriously,
- to receive the forgiveness made possible to us through his death and resurrection
- and to be faithful disciples, sharing his message as we await his final return

When Jesus left his disciples, he gave them a commission: 'Go therefore and make disciples of all nations, baptizing them in the name of the Father and of the Son and of the Holy Spirit, 20 and teaching them to obey everything that I have commanded you. And remember, I am with you always, to the end of the age.' [Matthew 28:19-20]

Each Christian tradition has this commission. Sometimes we are doing well, sometimes we fail badly. But it is the only job Jesus gave us to do.

In our worship we live out the reality of Jesus being with us 'to the end of the age'. In our sharing the message of Jesus with others and forming those who respond as disciples, we fulfil the first part. I am ready to affirm with anyone who wants to do that - whatever your label might be...

Stephen †

## ST.MARY'S NEWS

**Masses for October: Sunday, 10.00am, Tuesday, 10.00am, Wednesday, 7.00pm, Thursday, Morning Prayer 9.30am. Evensong every Wednesday at 6.30pm.**

**An Afternoon of Tudor Music.** A recital of Tudor music by Rosemary Robinson, Laura Robinson and friends. An opportunity to take a musical trip back in time to Tudor Bosworth in the setting of The Old Hall, finishing with refreshments. **Sunday 20<sup>th</sup> October, 3.00pm** followed by afternoon tea. To book: [fr.matthew.pittam@rcaob.org.uk](mailto:fr.matthew.pittam@rcaob.org.uk)



We have a permanent secondhand Booksale in the church conservatory. We have 1000s of new titles and welcome new donations. The Booksale is self service and is open for 30 minutes, each day, before and after Mass.

We now have a Choir that sings for our Sunday Mass. We have a practice session each Sunday, before Mass at 9.30am. All are welcome. (See also *Community Choir launch - Bugle Postbag p.2*) Don't forget our Mother & Baby Group every Wednesday in term-time 1.00pm

Father Matthew †

## †CHURCH SERVICES †

### Hexagon Benefice

#### October

Sunday 6<sup>th</sup> 10.30am Mowsley

Wednesday 9<sup>th</sup> 10.00am HB

#### Harvest Festival

Sunday 13<sup>th</sup> 6.00pm Shearsby

#### Harvest Service

Sunday 20<sup>th</sup> 10.30am B'thorpe

Sunday 27<sup>th</sup> 4.30pm Thedd.

#### Harvest Service

All Saints Church invites you to an informal, warm and friendly mid-week communion every Wednesday 10.00am  
Coffee/teas served afterwards

#### Senior Churchwarden:

Di Jones 880741

#### Curate:

Stephen March

[Stephen.March@LeicesterCofE.org](mailto:Stephen.March@LeicesterCofE.org)

### St Mary's Roman Catholic Church

#### Contact:

Fr. Matthew Pittam 01788 833547

[E:matthewpittam@yahoo.co.uk](mailto:E:matthewpittam@yahoo.co.uk)

## ALL SAINTS HARVEST

All Saints congregation will be joining with the village school to celebrate our Harvest Festival on Wednesday, October 9<sup>th</sup> at 10.00am.

This is a village Festival and everyone is invited to come along and bring 'harvest' gifts which, this year we will be donating to the Lutterworth Foodbank.

For those who are unable to get to the service, the usual Foodbank Collection will be on Friday, October 11<sup>th</sup> 2.00 to 4.30pm. Call in for a cuppa and a chat!

\*\*\*\*\*

Make a note in your diaries for the return of the Christmas Tree Festival, which will take place over the weekend of November 30<sup>th</sup> and December 1<sup>st</sup>.

More details about how to participate in this spectacular festive event to follow.

## DONALD CAMPBELL LANDSCAPES

All aspects of hard landscaping, including stone walling, pergolas, slabbing and patios. Husbands Bosworth area

Tel. No. 07817 381 244

## MARIE AINGE PHOTOGRAPHY

Local Photographer taking bookings

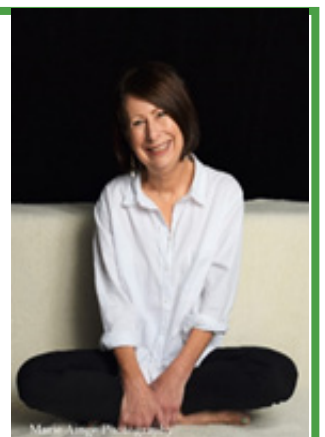
As published in Nikon Magazine 'Spring' a surprise photo session for your loved ones  
Slots now available

Prices are from £55 per session

View Facebook & Flickr.com

Contact 01858 880823

Email: [aingell@sky.com](mailto:aingell@sky.com)



## FORTHCOMING EVENTS

● Tuesday October 1 <sup>st</sup>	Parish Council meeting, 7.30pm, Sports Pavilion
● Wednesday October 2 <sup>nd</sup>	Historical Society meeting, 'The Polish Community in post-war Britain', 7.30pm, Pavilion
● Wednesday October 9 <sup>th</sup>	All Saints Church Harvest Festival, 10.00am, Church
● Friday October 11 <sup>th</sup>	Causeway Coffee Morning, 10.00am - 11.30am, Sports Pavilion
● Friday October 11 <sup>th</sup>	All Saints Foodbank Collection and tea stop, 2.00pm - 4.00pm Church
● Monday October 14 <sup>th</sup>	Mobile library ( <i>Note: New schedule and timings - see below</i> )
● Tuesday October 15 <sup>th</sup>	Art Group, 1.00pm - 3.00pm Sports Pavilion ( <i>Note: new times</i> )
● Sat. 26 <sup>th</sup> /Sun. 27 <sup>th</sup>	Welford Watercolourists Exhibition, 10.00am - 4.00pm Welford Village Hall
● Sunday, October 27 <sup>th</sup>	'Taffy Owen, A Long Life in Words & Pictures Exhibition', 3.00pm - 5.30pm Village Hall
● Tuesday October 29 <sup>th</sup>	Village Lunch, 12.30pm, Kilworth Springs Golf Club, South Kilworth Road,
● Tuesday October 29 <sup>th</sup>	Art Group, 1.00pm - 3.00pm Sports Pavilion
● Wednesday November 27 <sup>th</sup>	Village Lunch
● Sat. Nov. 30 <sup>th</sup> /Sun. Dec. 1 <sup>st</sup>	All Saints CHRISTMAS TREE FESTIVAL returns!

## LOCAL PLANNING NEWS

The following applications have been submitted to Harborough District Council:

- 24/01030/TCA Works to trees, Bosworth House, Berridges Lane
- 24/01053/FUL Conversion of agricultural building to dwelling, Old Barn Farm, Welford Road
- 24/01057/TPO Works to tree (HDC TPO 208), Bosworth House, Berridges Lane
- 24/01114/TCA Works to trees (*fell*), 23 Mowsley Road

Recently determined applications:

- 24/00569/FUL [*Approved*] Erect part single, part two storey rear extension, 23 School Lane
- 24/00768/FUL [*Approved*] Erect single storey modular building adj. to current surgery, Husbands Bosworth Surgery, 1 Marsh Drive
- 24/00766/LBC [*Approved*] Internal changes to form lobby and change of use, residential to part dental practice, 27 High Street
- 24/00877/CMA [*Approved*] Relocation of concrete plant (LCC Ref.: 2023/VOCM/0093/LCC), Husbands Bosworth Quarry, Welford Road

*Current applications may be inspected during normal working hours at the Parish Office, 2a Mowsley Road.*

### 24/00932/VAC LAND EAST OF LUTTERWORTH

**Outline application for development of up to 2,750 dwellings, business, industrial and storage and distribution uses, 2 primary schools, neighbourhood centre, public open space, greenspace, drainage features, acoustic barrier, and other associated infrastructure, and full application for the development of a spine road and associated junctions with the A426, Gilmorton Road, Chapel Lane (inc. partial closure and realignment), and the A4304 east of M1 Jn. 20, comprising carriageway, footway, cycleway to include earthworks, bridge structures, services, drainage, landscaping, lighting and signage.**

### LUTTERWORTH BANKING HUB

19 High Street Lutterworth  
The Hub is operated by the Post Office and is open 5 days a week, 9.00am to 5.00pm.

The Hub provides customers of major banks with transaction facilities, including paying in cash and cheques, withdrawing cash, paying utility bills and balance checks. A Community Banker service, where customers can talk to their own bank about more complicated issues are provided one day a week:

Monday: Barclays  
Tuesday: Natwest  
Wednesday: Santander  
Thursday: HSBC  
Friday: Lloyds

**\*\*STOP PRESS\*\***  
New Banking Hub coming to Harborough!



### MOBILE LIBRARY

it's all change for the Mobile Library...

New day and times: Monday every three weeks  
Stops & Times (See dates above)

Welford Road: 12.05pm - 12.30pm  
Butt Lane: 12.40pm - 1.00pm

Mobile library Service 0116 3052695 [libraries@leics.gov.uk](mailto:libraries@leics.gov.uk)

### District of Harborough



We collect up to 3 large household items or 12 sacks of waste for a charge of £37.16.  
Search: Harborough Bulky Waste

Oct-24				
Mo	Tu	We	Th	Fr
7	8	9	10	11
14	15	16	17	18
21	22	23	24	25
28	29	30	31	

## INMAN HALL BUILDING & PLASTERING

FINE BUILDING AND PLASTERING SERVICES

- RENOVATION
- EMERGENCY REPAIRS
- ROOFING
- EXTENSIONS
- BUILDING MAINTENANCE
- PLASTERING

**CALL GRAY INMAN-HALL : 07938217578**  
**OR EMAIL : INMAN-HALLBUILDING@HOTMAIL.COM**

## MILITARY VEHICLE DRIVING AND TANK BATTLES AT **ARMOURGEDDON**

**Military Museum**  
One of the Largest Collections of  
WWII Vehicles and Militaria in the Midlands.

Our under cover collection includes post war vehicles, Main Battle Tanks, as well as an excellent selection of other American, German and British vehicles. With interactive displays and lots of things to see. Visit on a game day (Saturday, Sunday or selected Wednesday—April to October) and you will get to see some of our vehicles driving around.

**01858 880 239**

Chat to us Online  
[www.armourgeddon.co.uk](http://www.armourgeddon.co.uk)

Office hours Monday to Friday 0900hrs—1700hrs