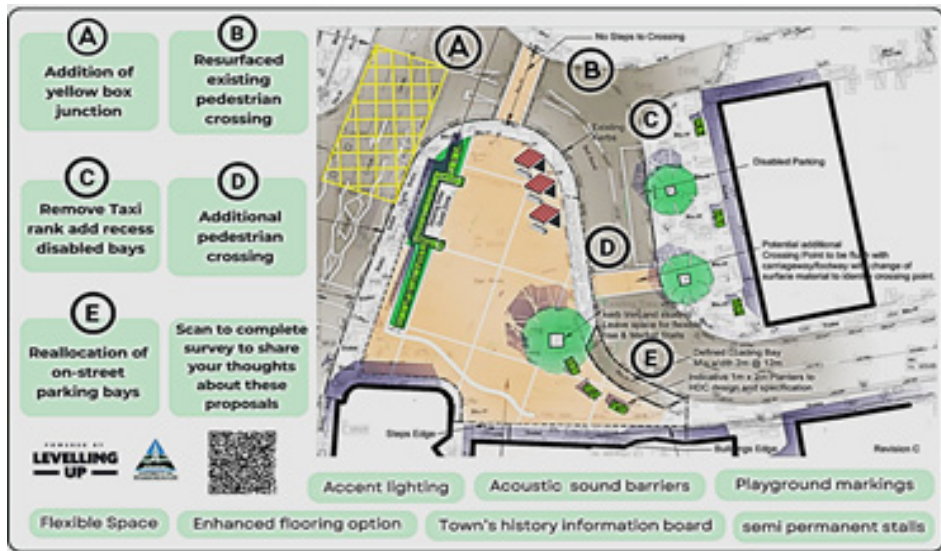


LUTTERWORTH PLANS

Lutterworth Town Estates and Lutterworth Town Council have recently put forward a scheme that will transform the centre of the town. The plan, which originated from the Lutterworth Town Centre Masterplan approved in 2019, will see parking removed from the Market Square and a public amenity space created. The scheme, which is costing £1m, will see the area resurfaced and new benches, additional trees planted and planters installed. The work will open up the space, ‘soften’ the centre of the town and enable more specialist events and speciality markets to be held.

Lutterworth Town Estates and the Town Council have consulted widely with local businesses and the current market traders on the site to ensure that the new space will be suitably flexible.

Although 12 parking spaces will be lost in the development, the scheme allows for a similar number of new spaces to be created in the other town centre car parks.



IN MEMORY...

The eagle-eyed dog walker and casual wanderer will have noticed a fine new tree planted at the lower end of Butt Lane. The tree is a eucalyptus, planted by the quarry operators. Mick George Ltd., to replace a memorial tree planted in 2010 in memory of the crew of a Wellington bomber that crashed near the site in September 1943. The aircraft crashed when returning to RAF Husbands Bosworth, whilst on a training flight. Two of the four crew members who died were Canadian, a fifth airman survived with severe burns.

The actual crash site has been lost in subsequent quarrying activity, but the memorial will look over the site and reference the adjacent aerodrome.



GOING LIKE CLOCKWORK...

Work to restore the clock-face of All Saints Parish Church clock has recently started. The first element to be tackled is the weathered stonework surrounding the clock dial, which is being professionally replaced with new stone. Further work



on the exterior of the clock will include re-gilding the slate dial and hands.

The restoration of the internal mechanism of the clock, parts of which date as far back as the 1600s, is also on the cards as funds allow.

If you would like to contribute, as a group, business or individual, with a donation towards the work please contact Diana Jones 880741.

JOIN HUSBANDS BOSWORTH PRIMARY SCHOOL FOR AN EVENING OF

CHRISTMAS CAROLS ON THE PLAYGROUND

MULLED WINE * MINCE PIES * HOT CHOCOLATE *

WITH MUSICAL PERFORMANCES BY THE CHILDREN AND THEIR CHANCE TO DECORATE THE TREE

PLUS A VISIT FROM YOU KNOW WHO...

THURSDAY 12TH DECEMBER 6PM

BUGLE POSTBAG

From Aneurin 'Taffy' Owen, Mowsley Road

Thank you to everyone who came to the recent event in the Village Hall to celebrate with me as I approach my 100th birthday. I was truly honoured that the event was arranged for me, and even more so as so many villagers came along! It gave me great pleasure to see you all and to catch up with your news, and was a real treat, especially as I am pottering about or 'scootering' around the village much less frequently these days and therefore not meeting many of you regularly.

There was clearly a huge amount of work involved in planning and arranging the event, and no doubt many of you were involved. I would like to thank all those who helped, with particular mentions to Jackie Fletcher and Heather O'Connor for organising the event, Gail Wilmot for a splendid and very special birthday cake, Melvyn Forman for his tireless work in producing photos, press cuttings, documents and other memorabilia to illustrate my life, ably supported by the equally tireless Julie Wright. The photos and documents have been presented to me in an album, a lasting record of many significant times in my life, and a wonderful memory of the party, to be treasured by me and my family for generations to come. Thank you to you all, it was a memorable day for me, and a happy occasion to see many of my friends from the village and nearby.

Editor's Note: After a short spell in hospital, Taffy is now in Brook House for a spell, to regain his strength and mobility, and would welcome visits from his village friends.

From the FOBS Committee

We would like to say a huge thank you to everyone who joined us for our recent Quiz & Curry Night. We are delighted to say that we raised a HUGE £1035!!!

The feedback has been so positive which makes all the hard work worthwhile. With such a great atmosphere, delicious food (Wigston Deli - Not Just A corner Shop), plenty to drink and a quiz round for everyone, it was village life at its best! Thank you.

THE BUGLE TEAM

Editor:

Melvyn Forman
10 Church Lane Tel: 880281
Email: m.forman@talk21.com

Treasurer & Advertising:

Ralph Horton
18 Highcroft Tel: 880526

Contacts:

Mike & Sylvia Price
3 Highcroft Tel: 880902

Jo Horton
18 Highcroft. Tel: 880526

Frances Smith
10 Butt Lane Tel: 880225

Penny Mattock
9 Fernie Court Tel: 881140

Heather O'Connor
16 Fernie Court Tel: 880165

Postal Subscription & distribution:

Melvyn Forman Tel: 880281
Email: m.forman@talk21.com

www.husbandsbosworth.info

COPY DEADLINE
15th OF THE MONTH
PRECEDING PUBLICATION

POLICE FILE



To contact your Dedicated Neighbourhood Team (DNT) online, use the quick and simple online contact tool - Search *Lutterworth Police*. You will be asked a few questions to make sure your query gets to the right place.

POLICE FILE

Market Harborough & Lutterworth Police

Dedicated Neighbourhood Team

Insp. Liz Perry

PC James Day

PC James Whittaker

PCSO Alexander Caswell-Jones

PCSO Steve Adams

Market Harborough Police Station,
Fairfield Road,
Market Harborough 0116 222 2222
harboroughandwigston.npa@leics.police.uk

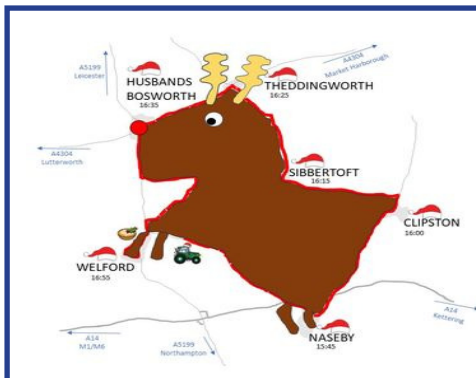
CRIMESTOPPERS:

0800 555111

ACTION FRAUD:

www.actionfraud.police.uk

0300 123 2040



**WELFORD, SIBBERTOFT & SULBY
ENDOWED SCHOOL**
Reindeer Run 2024
Sunday December 1st

**Starting at 4.00pm from Naseby Road,
Sulby, travelling anti-clockwise to end
at Welford 5.00pm**
**Tractor and vehicle parade. Expect
traffic delays**

'JJ's Kiddycare'



- * GOOD * Ofsted grading
- * Government funded sessions available
- * Full Day Care 0-5yrs
- * Situated on a farm site between South Kilworth and Welford
- * Breakfast and After School clubs. (4-14years)
- * Holiday Clubs during all Northants & Leics school breaks

Tel no. 01858 575642

www.jjs-kiddycare.co.uk

Email: admin@jjs-kiddycare.co.uk

HAIR BY LYNNNDY

Award winning hair stylist & colour specialist



"Now welcoming everybody to my hair studio in Husbands Bosworth for cuts, colours, blow-dries & wedding hair"



Appointment only - 07808 513283

lynnndy@hairbylynnndy.com

BOSWORTH IN FOCUS

WEATHER WATCH

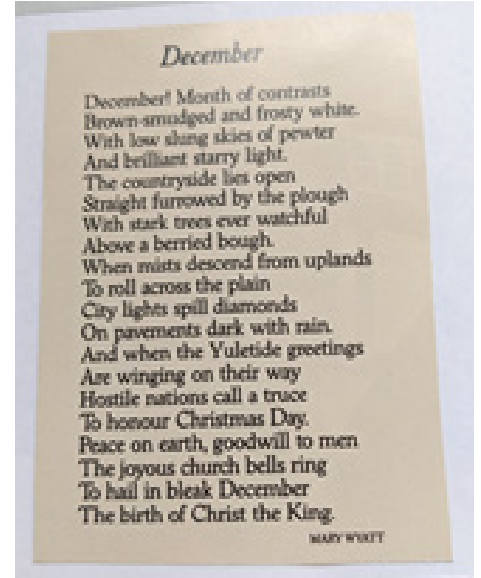
December is usually thought of - or wished for - as cold and crisp with snow on Christmas Day. This, as we know, rarely happens (only once in the last 32 years of recording in this area, in 1996, although there might have been snow lying from previous days). Snow in December has happened in 15 years from 1993 - the last one in 2023. Usually this month is grey, cold and wet.

December is, of course, the first month of meteorological winter with the winter solstice (the shortest day of the year) on Saturday, 21st. However it's a slow process (or seems to be) for the days to get any longer!

Last year, following on from the autumn storms, 3 more made landfall in Ireland and the UK in December: Elin, Fergus and Gerrit and we had over 5" of rain in parts of Leicestershire over the month. However, as mentioned above, we had a cold snap at the beginning of the month with ½" of snow followed by just under an inch of rain the next day! Thereafter it was wet and cold.

Not that many plants are in flower naturally in December but holly, ivy, mistletoe, mahonia (yellow flowers) and some other lovely shrubs are, including viburnum, daphne and winter jasmine. Others have berries stripped by hungry birds such as fieldfares and redwings. Look out for the chatter of these flocks.

Weather Watcher



QUARRY NEWS

At the recent inaugural meeting of the Husbands Bosworth Quarry Liaison Group, representatives of Husbands Bosworth Parish Council, Welford Parish Council, the landowner, Harborough District Council planning team and Mick George Ltd. discussed operation details of the site.

The meeting heard that work, which is projected to continue for between 8 and 10 years, has commenced on the Butt Lane East extension site. A phased programme of restoration will take place alongside the mineral extraction operation. The restoration scheme aims to return the site to future agricultural use, with reinstatement to the original landscape profiles.

The processing plant was currently operating on a per-campaign basis, chiefly supplying the GRS bagging plant, recent extraction activity being mainly stock-piling to enable the first phase of the restoration to begin. Only a small amount of material is currently being worked through the recently commissioned concrete batching plant, with throughput expected to increase steadily as the plant finds more local business. It was noted that the wheel-washing plant was operating efficiently and no significant traffic issues relating to the site were raised at the meeting. Details of traffic movements were not available at the meeting, but it was agreed that the main exporter from the site, GRS Bagging, be invited to the next meeting.

The next meeting will be in May 2025, when it is hoped that a site visit will be possible.

If you have any issues arising from the operation of the quarry please contact the Parish Clerk, Derek Watson on 881109.

IWA HARBOROUGH 75

A Celebration of the
75th ANNIVERSARY OF THE
1950 FESTIVAL OF BOATS & ARTS
SATURDAY 07 - SUNDAY 08 JUNE 2025
AT FOXTON, WITH A CAVALCADE OF BOATS TO
MARKET HARBOROUGH ON THE SATURDAY

WELFORD CINEMA NIGHT

Our next show will be on Saturday 7th December when we will be presenting the comedy-drama 'Thelma' (2024).

When 93-year-old Thelma Post gets scammed by a criminal pretending to be her grandson, she sets out on a perilous quest across the city to reclaim what was taken from her...

Special treat... This year we're going to treat the evening as our Christmas Special, and are going to dip into our funds to provide mulled wine and mince pies on arrival, as a way of saying thank you for everyone's great support over the past 12 months!

Showing at 7.00pm. Welford Village Hall, £7 on the door.

chrisbrownny55@hotmail.co.uk (Please book if possible, for catering purposes!)

**DONALD CAMPBELL
LANDSCAPES**
All aspects of hard
landscaping, including
stone walling, pergolas,
slabbing and patios.
Husbands Bosworth
area
Tel. No. 07817 381 244

INMAN HALL BUILDING & PLASTERING
FINE BUILDING AND PLASTERING SERVICES

- RENOVATION
- EMERGENCY REPAIRS
- ROOFING
- EXTENSIONS
- BUILDING MAINTENANCE
- PLASTERING

CALL GRAY INMAN-HALL : 07938217578
OR EMAIL : INMAN-HALLBUILDING@HOTMAIL.COM

SCHOOL REPORT

HUSBANDS BOSWORTH C. of E. PRIMARY SCHOOL Head Teacher Alan Eathorne



Recently Class 3 have been learning about the Victorian era, and enjoyed a walk around the village listening to Mrs Ascough talk about, and show photos of what Bosworth looked like in the 1800s. It was also fascinating finding out what school life was like and looking at old pictures of the school.

Class 4 have also been studying local history, but during a much earlier time period - the Stone Age. Melvyn Forman, our local historian came into school to tell us about the Neolithic causewayed settlement behind the quarry - people have been living in this area for over 5000 years. Melvyn brought in some Stone Age artefacts found locally and we thoroughly enjoyed finding out what they were used for. What a fascinating local history lesson we had!



BYGONE BOSWORTH

Images from the Historical Society's Archive Collection

In the early months of World War II, when the threat of an invasion of Britain loomed, the War Office quickly cobbled together a series of measures to limit or slow the progress of the invaders. 'Stop lines', were set up, where an invading enemy force could be halted comparatively easily by the natural geography or man-made features of the land. Evidence is usually in the form of pill-boxes, many of which still guard major river crossings notably on the Thames, Severn and Trent rivers. The country's extensive canal system also offered opportunities.

We relate these features to the very real threat of invasion in 1940. So, it came as quite a surprise when we recently came across an examination paper published in the august military journal, *The Volunteer Service Gazette*, dated 1907, which related to an exercise to halt an enemy force at the Laughton Hills.

The paper introduces a Red Force, based in 'the North of England', which is tasked with stopping the advance of a Blue Force, which has landed in south-east England and pressed northwards, apparently meeting little resistance. The papers are presumably for promotion assessments and are aimed at officers assuming the roles of Officer Commanding in a number of possible battlefield scenarios. The examiner's preamble notes that the River Welland and any canals encountered are unfordable; canals deemed to be 30 feet wide and 8 feet deep...

The Captain's paper assumes that the examinee is commanding a company of engineers. The canal bridge north of Husbands Bosworth village (Honeypot Bridge 46) has been destroyed and you are ordered to construct a replacement bridge 'fit for the carriage of all arms'. Conveniently, [but improbably...] a 30 foot long by 12 foot barge is moored adjacent to the brickworks, the east of the road.

In the Lieutenant's paper, the examiner seeks to determine how the Blue Force's cavalry and heavy armaments, approaching from Marston Trussell in the south can be stopped or hindered. The question focuses on the canal bridge, Bridge 52 'near the Rifle Range' south of the Laughton Hills, the order being to destroy the bridge. Helpfully, the paper informs the examinee that the bridge span is 8 yards, the breadth of the roadway 4 yards, the crown 1½ feet thick, thickness of the haunches 2½ feet and brickwork 18 inches. The task is to describe how to successfully carry out the demolition, firstly with a full supply of gun-cotton explosive, secondly with a limited amount of gun-cotton and lastly as effectively as possible in a short timescale.

The picture is of the Marsh family boating under Honeypot Bridge at about the time it was 'destroyed' to stop enemy forces...



MARIE AINGE PHOTOGRAPHY

Local Photographer taking
bookings

As published in *Nikon Magazine*
'Spring' a surprise photo session
for your loved ones
Slots now available

Prices are from £55 per session
View Facebook & Flickr.com
Contact 01858 880823
Email: aingell@sky.com



MILITARY VEHICLE DRIVING AND TANK BATTLES AT
ARMOURGEDDON

Military Museum

One of the Largest Collections of
WWII Vehicles and Militaria in the Midlands.

Our under cover collection includes post war vehicles, Main Battle Tanks, as well as an excellent selection of other American, German and British vehicles. With interactive displays and lots of things to see. Visit on a game day (Saturday, Sunday or selected Wednesday—April to October) and you will get to see some of our vehicles driving around.

01858 880 239

Chat to us Online
www.armourgeddon.co.uk

Office hours Monday to Friday 0900hrs—1700hrs

MORE BOSWORTH IN FOCUS

ACTIVITY & INTEREST GROUPS

Art Group

Contact: Melvyn Forman 880281

All Saints Parish Church

Contact: Diana Jones 880741

Causeway Charity

Contact: Heather O'Connor 880165

Craft Group

Contact: Gail Wilmot 880413

Badminton Club

Contact: Ralph Horton 880526

HB School

Contact: Office 880212

Historical Society

Contact: Melvyn Forman 880281

Millennium Woodland Trust

Contact: Jackie Fletcher 880910

Parish Council

Contact: Derek Watson 881109

Playing Field & Pavilion

Contact: Patricia Hobson 880070

St. Mary's Roman Catholic Church

Contact: Matthew Pittam 01788 833547

Tennis Club

Contact: George Walker 880222

Village Lunch

Contact: Jo Hutton 07534 057575

Village Hall

Bookings: Sue Fisher 880026

HISTORICAL SOCIETY

The Historical Society invites members and friends to join us for our annual Festive Quiz and Social Evening on Wednesday, December 4th, at 7.30pm in the Sports Pavilion, Kilworth Road.

This year's quiz is set by last year's lucky winners, Ralph, Jo, Mike and Beryl, so expect a testing competition!

As in previous years, we are happy to invite friends and non-members - just bring along a festive plate of either a savoury or sweet dish for the Bring & Share Supper...

Our new year will begin on Wednesday, January 8th when we will be welcoming back University of Leicester archaeologist Mathew Morris, who will be leading us through their recent dig on a medieval *Travelodge* - the former Knights Hospitallers site at Beaumont Leys...

CRAFT GROUP

The Craft Group meets on the second Wednesday of each month in the Committee Room of the Village Hall, 7.00pm to 9.00pm. This is a friendly and informal gathering where craft-minded people can pick up new ideas and practise their craft in a relaxed atmosphere away from the distractions of home life.

For details contact Gail on 880413.

ART GROUP

Bosworth Art Group is a small, friendly and informal group of arty minded souls meeting on alternate Tuesday mornings, 10.30am to 12.30 in the Sports Pavilion, Kilworth Road. Meetings are on a pay-as-you-go basis, £2.50 per session to cover room hire and coffee.

The group is self tutored and all mediums and skill levels are welcomed.

Interested? Come along and try a session...

New members warmly welcomed.

Art Group date for December is: Tuesday 10th. (Note: New Year re-start January 7th)

For details call Melvyn on 880281.

VILLAGE LUNCH

The next village lunch will be the special Festive Lunch on Wednesday December 19th at the Kilworth Springs Golf Club South Kilworth Road, North Kilworth. We meet at 12.30pm to eat at 1.00pm.

The Village Lunch is a great place for those new to the area, retired or living alone to meet up with old friends, catch up with all the local gossip and make new friends whilst enjoying an excellent home cooked meal in a relaxed and friendly atmosphere.

The cost of the special two-course meal including tea/coffee, mince pies and festive crackers is £18.00 per person. All dietary needs are catered for, please ask for details. Please call Jo on 07534057575 if you would like to book a place, arrange transport to the venue or for any other information.

Next month's Village Lunch date:

Tuesday, January 28th

CAUSEWAY COFFEE

The next Causeway Coffee is the special Christmas Lunch on Wednesday, December 11th at The Gliding Club, Sibbertoft Road. Meet in the bar at 12.00noon.

Usual Causeway Coffee Mornings are on the second Friday of each month and are open to anyone in the parish who is retired and living alone.

New Year Causeway Coffee morning, January 10th at the Sports Pavilion.

BOSWORTH TOTS

Friday, December 6th

Christmas Party with Jo Jingles.

Please book in our Facebook or WhatsApp

Bosworth Tots meets on Fridays, in term-time, 9.30am to 11.30am in the Village Hall. Each week we offer a range of toys and stimulating activities for pre-school children in the friendly and welcoming setting of the Hall. Snacks and home-baked cakes or savouries, tea, coffee, etc

£1.50 under 1s; £2.50 over 1s

(Twins or triplets pay for one child!)

WHAT ACTIVITY GROUPS?

New villagers often ask what activity groups or classes operate locally or within the village.

We are happy to promote any group, be it voluntary, just for fun, non-profit making or commercial classes in our *Bugle* listing free of charge.

All we ask is that the group or class either meets in the village, or meets locally, or has a Bosworth leader or Bosworth members.

Please email: m.forman@talk21.com

NEIL BURKE JOINERY

Supporting
the
Bosworth Bugle



BEGLEY'S
Established 50 Years
GENERAL JOINERY SPECIALISTS

Free estimates
All items can be viewed at Shearsby Workshop

Tel: 0116 2478755 (day)
01858 880569 (eve)
Email: andybeg@hotmail.co.uk

PARISH COUNCIL NEWS

Report of the Meeting of Husbands Bosworth Parish Council held on Tuesday 5th November 2024

Present: Full Council and 3 visitors

Visitors Questions

- ☐ A representative from Bosworth Tots attended the meeting and detailed a grant application. *[The application was discussed later in the meeting]*
- ☐ A parishioner highlighted the collapse of two drains on Welford Road and request that the Council report these to LCC Highways
- ☐ Clerk was asked to communicate to HDC concerns regarding proposed changes to pay-at-machine parking.

Minutes of the previous meeting were approved and signed as correct

Matters Arising (for report only)

- ☐ Clerk confirmed community donation payments had been made and thanks had been received
- ☐ Clerk confirmed a second quote has been requested for the paintwork required at play area
- ☐ Clerk confirmed maintenance work around Scout Hut and play area had been completed
- ☐ **Council noted that** an oak tree to replace the dead one had been planted in Dog Walk
- ☐ Groundwork at pavilion, play area and allotment gateway had been completed

Finance

- ☐ The monthly schedule of receipts and payments were received and accepted as accurate

Planning Overview

- ☐ The October planning application summary was presented and agreed

HDC Community Grant Fund

- ☐ Clerk advised that the application process for the fund is very detailed and time consuming and advised that Council should consider applications to be submitted in the second window, which opens on 16th February 2025. Chair and Clerk agreed to meet HDC Grants Officer, to discuss potential applications and criteria

Pavilion Artwork Project

- ☐ After discussion, Council agreed production details for the pavilion artwork project. Clerk was asked to assess costs. It was agreed to consider images from the Historical Society Archive as a basis for the artwork

Millennium Pavilion Electricity Contract

- ☐ With the electricity contract for the Pavilion due to expire, Council agreed to a competitive quote from a new supplier

Bosworth Tots Community Grant Application

- ☐ After discussion and earlier representations from the Bosworth Tots Group, it was agreed to make a donation to assist with the group's insurance costs and some items of new equipment

Speed Indicator Devices

- ☐ Council noted the apparent complexity of installing replacement SID devices and agreed to request further clarification and information

Neighbourhood Plan Review

- ☐ Council agreed that Derek Watson will act as the Clerk for the Neighbourhood Plan Review process
- ☐ It was confirmed that funding for consultancy support had been received and that Call for Sites letters would be sent out shortly

Lutterworth East – Correspondence to LCC

- ☐ Council reviewed a shared initiative draft letter with Welford Parish Council, to be sent to LCC relating to the likely traffic impact of the Lutterworth East development on both our villages

Any Other Business

- ☐ Following queries from potential hirers, Council agreed to seek costs of providing a cost effective internet capability at the Pavilion
- ☐ Provision of open space to support mental health and well-being issues was raised. Clerk noted that Market Harborough & Husbands Bosworth Medical Partnership had been allocated half an allotment plot in the spring, but no further engagement had been forthcoming

Next Meeting

- ☐ The next meeting of the Parish Council will be on Tuesday 3rd December 2024 at 7.30pm in the Sports Pavilion

A full copy of the Minutes can be viewed or downloaded at: www.husbandsbosworthpc.org.uk or by request to the Parish Clerk.

LOCAL OFFICERS

Husbands Bosworth Parish Council: Councillors

Patricia Hobson (Chair) 880070
James Bolter
Melvyn Forman
Gareth Peel
Kay Gallagher
Thomas East

Parish Clerk

Derek Watson
2a Mowsley Road
H.B. LE17 6LR Tel: 881109
clerk@husbandsbosworthpc.org.uk

District Councillor

Amanda Nunn
a.nunn@harborough.gov.uk

County Councillor

Blake Pain
Tel: 01858 411021
blake.pain@leics.gov.uk

Member of Parliament

Alberto Costa
Tel: 01455 283594
office@albertocosto.org.uk



• Toe nails cut
• Corns
• Verrucas
• Ingrown toe nails
• Hard dry skin
• Fungal nails
• Hopi candle ear wax removal
• Holistic therapies
Home appointments
07842 266575
www.happyfeetmidlands.com

HAPPY FEET
Registered
Foot Care
Specialist



FLOWERS BY HEATHER
Husbands Bosworth
Flowers and floral arrangements for any occasion
Call for a free consultation.
Many years experience in the floral industry.
Follow or like me on Facebook.
Call me on 07773 063063

CHURCH NEWS

All Saints Parish Church & St. Mary's Roman Catholic Church

ALL SAINTS CHURCH NEWS

What Really Annoys You About Him?

One of the fun things you get to do as a priest is to take weddings and meet with the bride and groom to plan everything and to explain to them exactly what Christian marriage is. They arrive on my doorstep, usually holding hands, and are a bit nervous. Over a cup of tea, one of the first things I ask them is, "What really annoys you about your partner?"

They are usually a bit taken aback - not what they were expecting. They don't know how honest to be, but can you lie to a priest? They are also worried how their partner will feel if they say something embarrassing, and are a bit worried what their partner will say about them...

After a bit of nervous laughter, they start to share some little things that their partner does that annoys them. Maybe she leaves the tops off jam jars, maybe he leaves cupboard doors open, maybe she leaves dirty clothes all over the house, maybe he doesn't listen or pay full attention when she is talking to him. There is always something that annoys the other person. Then I give them some homework. I send them away with a copy of the wedding service and ask them to read through the promises you will make to each other and think about how you are going to keep those promises and work out how you are going to know if you are keeping them well? How are you going to check-in with each other over the rest of your married life together, that you are keeping your promises?

This is not an easy thing - some of the promises are very complicated, "With my body I honour you". What does it even mean to 'honour someone with your body'?

I think it means that you are going to treat your spouse as someone worthy of respect, as someone who is precious to you, as someone you want to please as much as you can, which happens everywhere from the intimacy of the bedroom to the social setting of the pub. Treating each other with respect, honour, and value...

So, when they go back to that list of things that annoy each other, I ask "If you are going to 'honour each other with your body,' what will that mean for leaving the lids off jam jars, leaving cupboard doors open, leaving dirty clothes all over the house and giving your full attention to each other?" Suddenly, they realise that love is not just about warm fuzzy feelings, but it is about concrete actions; about changing behaviour in order to please their partner. Love expressed in actions.

Which is a truth Jesus expresses, "If you love me, you will obey my Commandments." So, we demonstrate that we love Jesus by how we live.

Jesus also reminds us that the greatest proof of love is to give your life for your friend.

Jesus didn't just speak these words, he lived them. On the cross, Jesus proved the degree of his love for us. How have you responded to God's love?

Stephen †

Parish Notices

Wendy Houston
of Berridges Lane

Passed away 2nd November 2024

Age 84 years

† R.I.P †

ST.MARY'S NEWS

Christmas at St. Mary's...

8th December 4.00pm Advent Carol Service

24th December 8.00pm Midnight Mass

25th December 10.00am Christmas Day Mass

Usual Masses

Sunday 10.00am Mass

Tuesday 9.30am Morning, Prayer 10.00am Mass

Wednesday 6.30pm Evensong, 7.00pm Mass. Thursday Morning Prayer 9.30am

†CHURCH SERVICES †

Hexagon Benefice

December

Sat. 30th Nov. & Sun. 1st Dec

All Saints Christmas Tree Festival HB

Sunday 1st 10.30am B'thorpe

Saturday 7th 7.30pm

Christmas Concert, Arnesby

Sunday 8th 10.30am Thedd.

Sunday 15th 10.30am Arnesby

Tuesday 17th 7.00pm

Gospel Concert, Mowsley

Sunday 22nd 10.30am HB

11.00am

9 Lessons & Carols, Thedd.

6.00pm

9 Lessons & Carols, Shearsby

Tuesday 24th 3.00pm

Crib Service, Arnesby

Wednesday 25th 10.30am

Christmas Day

All Saints Church invites you to an
informal, warm and friendly
mid-week communion every
Wednesday 10.00am

Coffee/teas served afterwards

Senior Churchwarden:

Di Jones 880741

Curate:

Stephen March

Stephen.March@LeicesterCofE.org

St Mary's Roman Catholic Church

Contact:

Fr. Matthew Pittam 01788 833547

E:matthewpittam@yahoo.co.uk

JR BESPOKE
PROPERTY RENOVATIONS



JLR Bespoke Property Renovations are an experienced and trusted Project Management and Construction team based in North Kilworth, Leicestershire.

If you have a project or idea in mind, please don't hesitate to contact us either by phone or via our website.
Tel: 07866 741 261 (Jason Wright)
www.jlrbespokeproperties.com

F&W Plumbing & Heating Services Ltd

Based in North Kilworth

- ▣ Bespoke bathroom & kitchen design and installation
- ▣ All types of wall and floor tiling
- ▣ Hot and cold water systems
- ▣ Unvented hot water systems

Contact Jason on 07866741261

Email: jasonfandw@hotmail.com

www.fandwplumbingandheatingservices.co.uk

Over 30 years experience in designing and installing contemporary and traditional kitchens and bathrooms

Project manage personally with all associated trades for a co-ordinated high quality finish with minimum disruption

FORTHCOMING EVENTS

Sat. Nov. 30 th /Sun. Dec. 1 st	All Saints CHRISTMAS TREE FESTIVAL returns! 12.00noon - 5.00pm Church
Tuesday December 3 rd	Parish Council meeting, 7.30pm, Sports Pavilion <i>(Note: there will be no meeting in January)</i>
Wednesday December 4 th	Historical Society meeting, <i>Quiz & Social Evening</i> , 7.30pm, Sports Pavilion
Saturday December 7 th	Welford Cinema 'Thelma', 7.00pm Welford Village Hall, West Street
Tuesday December 10 th	Art Group, 10.30am - 12.30pm Sports Pavilion
Wednesday December 11 th	Causeway Coffee Morning Christmas Lunch, The Gliding Club, 12.00pm
Thursday December 12 th	FOBS Carols in the Playground 6.00pm
Thursday December 19 th	Village Lunch Christmas Meal, 12.30pm Kilworth Springs Golf Club
Monday January 6 th	Mobile library
Tuesday January 7 th	Art Group, 10.30am - 12.30pm Sports Pavilion <i>(Note: new times)</i>
Wednesday January 8 th	Historical Society meeting 'The Knights Hospitallers - the medieval Travelodge'
Friday, January 10 th	Causeway Coffee Morning
Tuesday February 4 th	Parish Council meeting <i>(Note: No Parish Council meeting in January)</i>
Monday January 27 th	Mobile Library

LOCAL PLANNING NEWS

The following applications have been submitted to Harborough District Council:

■24/01337/TCA Works to tree (fell), 4 Honeypot Lane

Recently determined applications:

■24/01228/TCA (Approved) Works to Leylandii hedges, Croft House, 39 Mowsley Road

Current applications may be inspected during normal working hours at the Council Offices, The Symington Building, Adam & Eve Street, Market Harborough or at the Parish Office, 2a Mowsley Road.

Planning applications and other aspects of local government can be viewed on-line at www.harboroughonline.co.uk

PUBLIC NOTICE

In the matter of the Marsh family of Husbands Bosworth and the Community Church Hall, Honeypot Lane, Husbands Bosworth Notice is hereby given that Husbands Bosworth Parochial Church Council invites Expressions of Interest from anyone claiming a direct family relationship to the Marsh family of Husbands Bosworth or anyone with any interest in the Community Church Hall.

Any such Interest should be declared in writing to:

Churchwarden, Mrs. Diana Jones,
21 Highcroft, Husbands Bosworth LE17 6LF

By noon on the 30th day of December 2024

LUTTERWORTH BANKING HUB

19 High Street Lutterworth
The Hub is operated by the Post Office and is open 5 days a week, 9.00am to 5.00pm.

The Hub provides customers of major banks with transaction facilities, including paying in cash and cheques, withdrawing cash, paying utility bills and balance checks.

A Community Banker service, where customers can talk to their own bank about more complicated issues are provided one day a week:

Monday:	Barclays
Tuesday:	Natwest
Wednesday:	Santander
Thursday:	HSBC
Friday:	Lloyds



MOBILE LIBRARY

it's all change for the Mobile Library...

New day and times: Monday every three weeks

Stops & Times (See dates above)

Welford Road: 12.05pm - 12.30pm

Butt Lane: 12.40pm - 1.00pm

Mobile library Service 0116 3052695 libraries@leics.gov.uk

District of Harborough



We collect up to 3 large household items or 12 sacks of waste for a charge of £37.16.
Search: Harborough Bulky Waste

Dec-24

Mo	Tu	We	Th	Fr
2	3	4	5	6
9	10	11	12	13
16	17	18	19	20
23	24	25	26	27
30	31			



All aspects of vegetation management, landscape maintenance and weed control

Urban, highway, sports, industrial and domestic

LanGuard Ltd • Packs Hill Farm • Station Road • Husbands Bosworth • Lutterworth • Leicestershire • LE17 6JN
Tel: 01858 880 898 • Fax: 01858 880 720
Email: info@languard.co.uk

COMPLETE CAR CARE

Accident repair specialist

Bodywork, dent, scratch and stone-chip repair

Servicing, alloy refurbishment, welding

MoT repair

Valeting, full body polish

Parking sensors, tyres & exhausts, etc. fitted

Call Ben on 01858 880404

bencompletotecarcare@outlook.com