

Bosworth Magna

Harborough District Council has recently published the draft of their new Local Plan, which aims to direct housing development within the district through to 2041. The proposals within the Plan have a 'trickle-down' effect, distributing development throughout all the settlements in the district according to sustainability, accessibility and facilities.

Within the settlement hierarchy, Husbands Bosworth is classed as a medium village, alongside Houghton-on-the-Hill, Great Bowden, Ullesthorpe and Billesdon, and satisfies all the recognised criteria for further development. So, we knew that the corporate eye would fall on Bosworth. Thankfully, our own 'local' Plan, the Neighbourhood Plan, does give us a degree of control over where this development should take place and what it should look like.

So, what is the bottom line? How much bigger does Harborough District Council think Husbands Bosworth needs to be? Well... the bottom line is that we are expected to find space for 105 more homes. The task now, is for us, as a community, to allocate a site, or sites where these 'incomers' will best fit.

We are currently undertaking a review of the Neighbourhood Plan, and that's where you, the community come in. If you want to be involved in the future shaping of the village or are simply interested in finding out more, please come along to a special Public Meeting on Monday, March 10th, 7.00pm at the Sports Pavilion, Kilworth Road.

PAYING FOR BOSWORTH

The Parish Council has recently set its precept figure for the next year. At £77,500, the figure is just 4% higher than last year, and is collected as the parishes share of the district council administered Council Tax.

So, what does this pay for?

A large slice of this goes towards property costs... the Parish Council owns the playing field, the Dog Walk, the Scout Hut car park, the cemetery, the play area and the village greens and is responsible for the grass mowing and hedge and tree maintenance in these areas. It also undertakes roadside grass-cutting within the village curtilage on behalf of Harborough District Council.

The Parish Council also owns two of our bus shelters, all the public benches, planters, dog poo and road salt bins, and owns and maintains the Sports Pavilion.

The Parish Council also holds a Community Fund to enable it to support, with discretionary grants, local voluntary groups that specifically benefit the community.

In order to administer the day-to-day business of the Parish, the Parish Council maintains a Parish Office and employs a Clerk, and also employs a caretaker/handyman to undertake minor maintenance and repair works.

The Parish Council Precept documentation can be viewed on the Parish website: husbandsbosworthpc.org.uk or by arrangement with the Parish Clerk, Derek Watson 01858 881109.

TRUCK STOP

Welford Action Group are keen to remind us to continue noting and reporting any incidents of car transporters passing through the village, infringing the Bruntingthorpe Traffic Plan for traffic servicing the vehicle storage facility.

You can report incidents directly by email at: tptcomplaints@bruntingthorpe.atlassian.net, attaching a dated and time-stamped photograph where possible.



**ARRIVE 7.30PM
EYES DOWN 8PM**

5TH APRIL

**VILLAGE HALL
HUSBANDS BOSWORTH**

**£10 per ticket which includes all games
and nibbles!**

Pay by bank transfer to the Friends of Bosworth
School (FOBS) account and reference your name.
Acc: 00060636 Sort Code: 40-52-40

Call or message Emma Jones for more info or to pay
by cash 07773 569173

BUGLE POSTBAG

From Di Jones & Peter Bugge, Church Wardens All Saints Church

In this issue of the *Bugle* you will find a letter from our village church. Please take time to read this - it is very much a cry for help to keep our church alive and well cared for. To this end we would like to start a Friends of All Saints Group to raise funds for improvements. As the largest building in the village our church could be used for meetings and events, but to do this we need to renew our elderly heating system, install toilets and improve the kitchen facilities. Any funds raised by the Friends would be used specifically for these improvements to the fabric of the church, and not for the day-to-day expenses. Please help us to preserve this beautiful, ancient building for future generations.

POLICE FILE



To contact your Dedicated Neighbourhood Team (DNT) online, use the quick and simple online contact tool - Search *Lutterworth Police*. You will be asked a few questions to make sure your query gets to the right place.

LUTTERWORTH BEAT SURGERIES

March

Friday, March 28th, 12.00pm - 12.30pm

Lutterworth Leisure Centre, Coventry Rd., Lutterworth

Friday, March 28th, 2.00pm - 2.30pm,

Ullesthorpe Garden Centre, Bitteswell Road, Ullesthorpe

Market Harborough and Lutterworth Police are urging folk to be especially vigilant when using ATM's after a recent spate of incidents across the district where suspect skimming devices were found attached to the banking machines.

If you see a suspect device, or are in any way uneasy about using any ATM, please notify staff at the premises where the ATM is located and the Police as soon as possible, so that it can be forensically recovered. Anyone who suspects that they may have been a victim of this type of crime, or has any information that may be relevant, is asked to contact Leicestershire Police on 101.



THE BUGLE TEAM

Editor:

Melvyn Forman
10 Church Lane Tel: 880281
Email: m.forman@talk21.com

Treasurer & Advertising:

Ralph Horton
18 Highcroft Tel: 880526

Contacts:

Mike & Sylvia Price
3 Highcroft Tel: 880902

Jo Horton
18 Highcroft. Tel: 880526

Frances Smith
10 Butt Lane Tel: 880225

Penny Mattock
9 Fernie Court Tel: 881140

Heather O'Connor
16 Fernie Court Tel: 880165

Postal Subscription & distribution:

Melvyn Forman Tel: 880281
Email: m.forman@talk21.com

www.husbandsbosworth.info

COPY DEADLINE
15th OF THE MONTH
PRECEDING PUBLICATION

POLICE FILE

Market Harborough & Lutterworth Police

Dedicated Neighbourhood Team

Insp. Liz Perry

PC James Day

PC James Whittaker

PCSO Alexander Caswell-Jones

PCSO Steve Adams

Market Harborough Police Station,
Fairfield Road,

Market Harborough 0116 222 2222

harboroughandwigston.npa@leics.police.uk

CRIMESTOPPERS:

0800 555111

ACTION FRAUD:

www.actionfraud.police.uk

0300 123 2040

LAMBERT & WRIGHT
BESPOKE PROPERTIES

Lambert & Wright are an award winning Property Renovation Team covering the Midlands. With over 30 years of experience we handle everything from plumbing and electrics to period restoration.

For a free consultation please call or email:
07866 741261 (Jason)
info@lambertandwright.co.uk

LABC Building Excellence AWARDS 2023 Regional Winner

LanGuard
Vegetation Management
Safeguarding the Environment

All aspects of vegetation management, landscape maintenance and weed control

Urban, highway, sports, industrial and domestic

LanGuard Ltd • Packs Hill Farm • Station Road • Husbands Bosworth • Lutterworth • Leicestershire • LE17 6JN
Tel: 01858 880 898 • Fax: 01858 880 720
Email: info@languard.co.uk

BOSWORTH IN FOCUS

WILD ABOUT BOSWORTH

A walk along the canal from North Kilworth Wharf and under the A4304 bridge soon takes us into the cutting that leads to Husbands Bosworth tunnel. Whilst, what walking magazines describe as 'stout footwear' is recommended due to the often muddy conditions along this section of canal, the walk in all seasons is always a natural treat... On a recent foray we came across the aftermath of Storm Éowyn, the UK's most powerful storm in over a decade. Canal and River Trust workers were busy clearing a fallen tree that was blocking both the navigation and the towpath. This meant a scramble up the embankment, to the disused Rugby to Stamford railway, which follows the line of the canal, to bypass the blockage. The remains of another fallen tree, thankfully cleared, met us before the horse-boat path rises up over the tunnel. At this point a slight movement close to the waterline on the offside embankment caught our eye... Expecting to see the flurry of a startled pheasant, the source soon resolved into the diminutive form of a muntjac deer watching us intently.



Muntjac deer were introduced into the UK by the Duke of Bedford in 1925 as decorative features for the duke's estate at Woburn, and all the muntjac that we come across today, such as our new friend on the canal, are the result of escapees from Woburn Park breeding in the wild. Standing little taller than a medium size dog, whilst nominally nocturnal, when out grazing in the open they are often mistaken at first sight for a jack-hare. They rut all year round and the buck's mating call is a harsh, primeval bark. Interestingly, though widely distributed across south-east Asia and Indonesia, the only other focus of habitat in the whole world is the UK contingent!

BUS SERVICE 58

We've been warned to expect changes to the Centrebus 58 Service in the near future, The service is subsidised by the County Council, and we are told that, subject to the Local Transport Review, any changes will come into effect on March 17th.

Quite what these changes are, and how they will affect the service wasn't clear at the time the *Bugle* went to press. As usual, County Hall are keeping the tendering details close to their corporate chest and confusing the issue, but we are assured that there will be no gap in the provision of the service.

If you have any questions about the proposed changes, please email:

choosehowyoumove@leics.gov.uk

In the meantime, any news received by the Parish Council will be posted on the Parish Council website:

www.husbandsbosworthpc.org.uk



The Department of Transport outlined their vision for the future of public transport in the National Bus Strategy 2024. Scan the QR code for a whole lot of governmental guff and essential bedtime reading...

Bosworth Tots Session Dates

March	7 th	14 th	21 st	28 th
April	4 th	11 th		

Husbands Bosworth Village Hall
Fridays 9:30 - 11:30

under 1's £1.50

1 - 5's £2.50

pay for one twin or triplet

@bosworthtots for more information

*Usborne Books will be visiting
Bosworth Tots
on Friday April 11th*

FRIENDS OF THE WELFORD ARM

At the end of last year we carried out some path improvements at Welford Reservoir, a feeder to the canal. The Canal and River Trust had cleared a fallen tree in the wooded bankside and we successfully cleared the rest of the undergrowth to establish a new path. Weather permitting we'll be back to create a set of steps up the bank and finish the task.

FRIENDS
OF THE
WELFORD
ARM



Provisional 2025 Saturday workparty dates: March 1st & April 5th Meet at the Wharf 9.30am

FLOWERS BY HEATHER

Husbands Bosworth



STOP PRESS
Pop-up stall
16 Fernie Court
Saturday, 29th

Now taking Orders for
Mothering Sunday
on 30th March.

Totally Biodegradable
Hand Ties start at £20

Aqua Hand ties £35

Message or call me on
07773 063063

Follow or like me on
Facebook

COMPLETE CAR CARE

Accident repair specialist

Bodywork, dent, scratch and stone-chip repair

Servicing, alloy refurbishment, welding

MoT repair

Valeting, full body polish

Parking sensors, tyres & exhausts, etc. fitted

Call Ben on 01858 880404

bencompletotecarcare@outlook.com

SCHOOL REPORT

HUSBANDS BOSWORTH C. of E. PRIMARY SCHOOL Head of School Alison Vickers

Recently thirty children from Years 4, 5 and 6 travelled to Birmingham Arena to take part in Young Voices 2025. Together with 5,000 other children they sang, danced and grooved to form one of the largest choirs in the world.

They were joined by Tommy Blaize (lead vocalist on TV's *Strictly Come Dancing*) along with urban dancers and professional singers. The children worked so hard to learn all the songs and actions - we couldn't have been prouder!

What a truly wonderful experience. Children, staff and parents had a fabulous time as the arena went dark and the twinkling torches shone brightly!

FOBSNEWS

DATE for your diary:

FOBS School Summer Fair Sunday June 29th



BYGONE BOSWORTH

Images from the Historical Society's Archive Collection

Every now and then another golden gem of Bygone Bosworth arrives at the Historical Society's Archive. Recently, in a 'de-clutter' prior to selling her village home, Jennifer Rogers came across a folder of photograph albums and newspaper cuttings from the heady days of the celebrated Village Hall Theme Nights.

Usually supported by the village's Drama Group, the Theme Nights ran for many years as a major fund-raiser for the Village Hall and other village good causes.



Every year the Village Hall was elaborately decked out and a different theme concocted - Country & Western, the Bavarian Oompah, Bosworth at War, Victoria & Albert, the Twenties & Flappers... and who can ever forget the 'Allo, 'Allo French Resistance Night, and the Fallen Madonna wiz ze Big Boobies?

Each event included a sumptuous cabaret style two course meal, complete with a menu, beers and wine in keeping with the theme. The feast was then followed by table-top games, a stage show performed by members of the Drama Group or a live band and dancing...

Our picture is of the 'front of house' and catering staff on the occasion of the Bavarian Night in 1997.

NEIL BURKE JOINERY

*Supporting
the
Bosworth Bugle*

LUTTERWORTH ANTIQUES WE BUY - CASH PAID

IF YOU'RE DOWNSIZING, CLEARING A RELATIVES HOUSE
OR YOU HAVE SINGLE ITEMS TO SELL - CONTACT US:

☎ 01455 249450 ✉ jwrightsec@hotmail.com

- Antiques
- Retro
- Industrial
- Old toys
- Old coins
- Silver
- Medals
- Vintage
- Jewellery
- Furniture
- Ornaments
- Collectables
- Curiosities
- Military
- Unusual Items
- Enamel signs
- Garden items
- Railway items
- Shop cabinets
- Advertising signs
- Architectural salvage

And lots more...

Contact us
with any
enquiries!

VISIT OUR SHOP & YARD AT:

Lutterworth Antiques
Leicester Road
Lutterworth
LE17 4HF

OPEN MONDAY - FRIDAY 9AM - 5PM SUNDAY 10AM - 3PM
OR VISIT

WWW.LUTTERWORTHANTIQUES.CO.UK

MORE BOSWORTH IN FOCUS

ACTIVITY & INTEREST GROUPS

Art Group

Contact: Melvyn Forman 880281

All Saints Parish Church

Contact: Diana Jones 880741

Causeway Charity

Contact: Heather O'Connor 880165

Craft Group

Contact: Gail Wilmot 880413

Badminton Club

Contact: Ralph Horton 880526

HB School

Contact: Office 880212

Historical Society

Contact: Melvyn Forman 880281

Millennium Woodland Trust

Contact: Jackie Fletcher 880910

Parish Council

Contact: Derek Watson 881109

Playing Field & Pavilion

Contact: Patricia Hobson 880070

St. Mary's Roman Catholic Church

Contact: Matthew Pittam 01788 833547

Tennis Club

Contact: George Walker 880222

Village Lunch

Contact: Jo Hutton 07534 057575

Village Hall

Bookings: Sue Fisher 880026

ART GROUP

Bosworth Art Group is a small, friendly and informal group of arty minded souls meeting on alternate Tuesday mornings, 10.30am to 12.30pm in the Sports Pavilion, Kilworth Road. Meetings are on a pay-as-you-go basis, £2.50 per session to cover room hire and coffee.

The group is self tutored and all mediums and skill levels are welcomed.

Interested? Come along and try a session...

Art Group dates for March are: Tuesdays, 4th and 18th.

For details call Melvyn on 880281.

HISTORICAL SOCIETY

Our next meeting is on Wednesday, March 5th at 7.30pm in the Sports Pavilion, Kilworth Road, when our friend, Heather O'Connor, will be taking us along on her 'Tour of Japan' and springtime in the Far East.

The meeting is open to all - we do ask a £2.50 door charge for non-members.

Our April meeting, on Wednesday, April 2nd will be our last indoor meeting of the year. This will be our AGM followed by member, Helen Allen's 'View of a Highland village - Invergarry'.

We will hope to arrange a summer outing to somewhere of local interest in June - watch this space!

CAUSEWAY COFFEE

The next Causeway Coffee is on Friday, March 14th at the Sports Pavilion, Kilworth Road, 10.00am to 11.30am.

Causeway Coffee Mornings are on the second Friday of each month and are open to anyone in the parish who is retired and living alone.

Come along and have a coffee and a piece of cake with us, have a chat and browse our extensive jigsaw and book library.

If you hear of anyone living locally, who may be alone, vulnerable or needing support let the Causeway team know - we offer a warm and friendly welcome to everyone...

CRAFT GROUP

The Craft Group meets on the second Wednesday of each month in the Committee Room of the Village Hall, 7.00pm to 9.00pm.

We are a friendly and informal gathering where craft-minded people can pick up new ideas and practise their craft in a relaxed atmosphere away from the distractions of home life.

For more information please contact Gail on 880413.

VILLAGE LUNCH

The next Village Lunch will be on Thursday March 27th at the Kilworth Springs Golf Club South Kilworth Road, North Kilworth. We meet at 12.30pm to eat at 1.00pm.

The Village Lunch is a great place for those new to the area, retired or living alone to meet up with old friends, catch up with all the local gossip and make new friends whilst enjoying an excellent home cooked meal in a relaxed and friendly atmosphere.

The cost of the two-course meal, including tea/coffee and mints is £13.50 per person. All dietary needs are catered for, please ask for details.

Please call Jo on 07534057575 if you would like to book a place, arrange transport to the venue or for any other information.


Next month's Village Lunch date: Tuesday, April 29th

BEGLEY'S

Established 50 Years

GENERAL JOINERY SPECIALISTS

Wooden Windows and Doors
Porches
Conservatories
Carpentry & Building



Free estimates
All items can be viewed at Shearsby Workshop

Tel: 0116 2478755 (day)
01858 880569 (eve)
Email: andybeg@hotmail.co.uk

F&W Plumbing & Heating Services Ltd

Based in North Kilworth

- ▣ Bespoke bathroom & kitchen design and installation
- ▣ All types of wall and floor tiling
- ▣ Hot and cold water systems
- ▣ Unvented hot water systems

Contact Jason on 07866741261

Email: jasonfandw@hotmail.com

www.fandwplumbingandheatingservices.co.uk

Over 30 years experience in designing and installing contemporary and traditional kitchens and bathrooms

Project manage personally with all associated trades for a co-ordinated high quality finish with minimum disruption

PAXFORD ELECTRICAL

Qualified to 18th Edition BS7671
&
City & Guilds 2391 for Inspection & Test
Part P Registered
Reliable
Professional
Friendly

Electrical Services:

- Installation Maintenance and electrical repair to home electrics
- Consumer units, Fuse boards, & EICR's
- Lighting repair or replacement, security lighting
- Switches and sockets
- Cooker and shower circuits
- Pull cords, fans and timers
- Nuisance tripping, fault finding and diagnosis

Handyman services include, but not limited to

- Carpentry, doors eased, locks replaced etc
- Central Heating electricals
- Showers and fans replaced
- Plumbing and leak repairs
- Data & CCTV

Call John for a free quotation: 07866 761937
Or email paxfordjohn@gmail.com

PARISH COUNCIL NEWS

Report of the Parish Council Meeting held on Tuesday, February 2nd 2025

Present: Cllr. Bolter (Chair of meeting), Cllr. Forman, Cllr. Gallagher and Cllr. East

Mr. D. Watson, Clerk to the Parish Council and 1 visitor

Visitors Questions

■ The visitor advised of a pothole near the entrance to Bosworth Hall. Clerk to advise Highways

Minutes

■ The Minutes of the previous PC meeting and the Precept Meeting were approved and signed as correct

Matters Arising (for report only)

■ Clerk confirmed that he now had more information about the Community Grant Scheme, eligibility criteria and funding periods

■ It was noted that the FOI request regarding the Road Safety Camera data was of little use in our request to install a new Speed Indicator Device

■ A suitable date for defibrillator familiarisation training was still being sought

Finance

■ December and January payment and expenses schedules were confirmed and agreed

Planning Overview

■ The December and January planning application summary was presented and accepted

Parish Maintenance

■ Quotations for repainting the railings and gates of the cemetery and repainting the play equipment were presented and accepted

■ Council agreed to purchase a key safe for the Pavilion internal keys

■ Council agreed a quotation for the removal of the broken eucalyptus tree from the Dog Walk and for a section of manual hedge cutting next to Scout Hut

FA Pitch Improvement

■ Council agreed that they would like to discuss this Football Association initiative further with North Kilworth Football Club

Garage conversion

■ Clerk confirmed that the purchase of a new storage facility for the Pavilion could be eligible for a Section 106 application

Community Grant Fund

■ Clerk confirmed the application had been made with regard to grant funding for the Pavilion art project

Councillor Surgeries

■ Council agreed to reinstate Saturday morning Councillor Surgeries in the spring

Any Other Business

■ Clerk was asked to contact the quarry operator regarding the heavy soiling of the highway and ask that this be monitored, that the Welford Road roadside drains be cleared of silt and ensure that the Butt Lane crossing be cleared regularly

Next meeting

The next meeting of the parish council will be on Tuesday 4th March at 7.30pm in the Sports Pavilion

A full copy of the Minutes can be viewed or downloaded at: www.husbandsbosworthpc.org.uk or by request to the Parish Clerk.

LOCAL OFFICERS

Husbands Bosworth Parish Council:

Councillors

Patricia Hobson (Chair) 880070

James Bolter

Melvyn Forman

Gareth Peel

Kay Gallagher

Thomas East

Parish Clerk

Derek Watson

2a Mowsley Road

H.B. LE17 6LR Tel: 881109

clerk@husbandsbosworthpc.org.uk

District Councillor

Amanda Nunn

a.nunn@harborough.gov.uk

County Councillor

Blake Pain

Tel: 01858 411021

blake.pain@leics.gov.uk

Member of Parliament

Alberto Costa

Tel: 01455 283594

office@albertocosta.org.uk

The Vagus Nerve

Internal and external stress can have an impact on your mind, your body and your spirit. So, it's important that we learn to embrace the powerful self-healing wonders within us.

The vagus nerve is the largest organ in the body's autonomic nervous system, which regulates all of your basic functions like breathing, your heartbeat, and the dilation of your eyes. This 'soul nerve' unifies your entire nervous system, and understanding how to connect, release and re-balance is the key to a happy heart and thriving soul.

Daily practice connecting with our vagus nerve gives our head, heart, stomach, bladder, and everything else in your body, the opportunity to discover tension, let go of stress and open a doorway to our inner most healing to help you stay in the flow of life.

For details please contact Patricia
www.patricialavelle.co.uk

HAIR BY LYNNDY

Award winning hair stylist & colour specialist



"Now welcoming everybody to my hair studio in Husbands Bosworth for cuts, colours, blow-dries & wedding hair"



Appointment only - 07808 513283

lynndy@hairbylynndy.com

PATRICIA LAVELLE



Foot Therapy Clinic

Reflexology

Elite Medical Foot Care

Laura Lane Studios, 43 High Street, Market Harborough LE16 7AQ
www.PatriciaLavelle.co.uk Email: Hello@PatriciaLavelle.co.uk

CHURCH NEWS

All Saints Parish Church & St. Mary's Roman Catholic Church

ALL SAINTS CHURCH NEWS

What is the Future for All Saints' Church?

Leicester Diocese is in the middle of a re-organisation process, the goal of which is to re-focus and re-imagine the life and mission of every parish church in the diocese. Once each church has a sense of what it is being called to be and to do within its local context, a framework will be put in place to support each parish in its mission and service to its local community.

This framework is being called a 'Minster Community'. What this will look like may vary across the diocese, but generally it will involve larger groupings of parishes sharing a team of paid and unpaid clergy, lay ministers, and volunteers. The process that will enable us to move to this new structure will take around two years.

All Saints' Church has just entered this process. Therefore, it is a vitally important time in the life of our local church, and I would urge all members of the community to get involved. If you want your local church to continue to play a part in the life of the village, then you need to make your voice and opinions heard.

There are two ways that you can do this.

The Electoral Roll - Firstly, you can have your name registered on the Electoral Roll of the church and secure your right to vote on any future decisions about our church. Contact Di Jones, dianajones929@gmail.com, or 01858 880741 for an application form. This is completely free to do.

The Friends of All Saints - we are encouraging the community to stand behind our village church by the creation of a fundraising 'Friends of All Saints' group. Details are still being worked out, but see elsewhere in the *Bugle* for more details and look out for an upcoming invitation to join this group and support the continued life of our village church.

I believe that there is a great fondness for All Saints', and I think many, if not most people, feel that they would prefer the church to be open, rather than closed.

Please do support our church, and if perhaps you haven't been along for a while, why not listen out for the church bells on a Sunday morning and pop along and join us? We also have an informal service every Wednesday at 10.00am.

My prayers and blessings.

Stephen †

Pudding Evening
(2nd helping!)

DONATIONS WELCOME

PUDDING PUZZLE

HUSBANDS BOSWORTH VILLAGE HALL

26TH APRIL 2025

7-9 PM

All Saints Husbands Bosworth Fundraising Event

ST. MARY'S NEWS

Ash Wednesday, March 5th

Our Ash Wednesday Masses, will include the Imposition of Ashes and will be 10.00am and 7.00pm, with Stations of the Cross 30 minutes before each of these special Masses.

Our usual weekly Mass times remain the same:

Sunday 10.00am
Tuesday 10.00am
Wednesday 7.00pm
Thursday 10.00am

Evensong or Mattins 30 mins before each mass.

Please note: Our Bookshop is open whenever the Church is open. New books arriving daily!

Father Matthew †

†CHURCH SERVICES †

Hexagon Benefice

March

Sunday 2nd 10.30am Thedd.
Sunday 9th 10.30am HB
Sunday 16th 10.30am Arnesby
Sunday 23rd 10.30am Mowsley
Sunday 30th 10.30am Shearsby

All Saints Church invites you to an informal, warm and friendly mid-week communion every Wednesday 10.00am
Coffee/teas served afterwards

Churchwardens:

Di Jones 880741

Peter Bugge

Curate:

Stephen March

Stephen.March@LeicesterCofE.org

St Mary's Roman Catholic Church

Contact:

Fr. Matthew Pittam 01788 833547

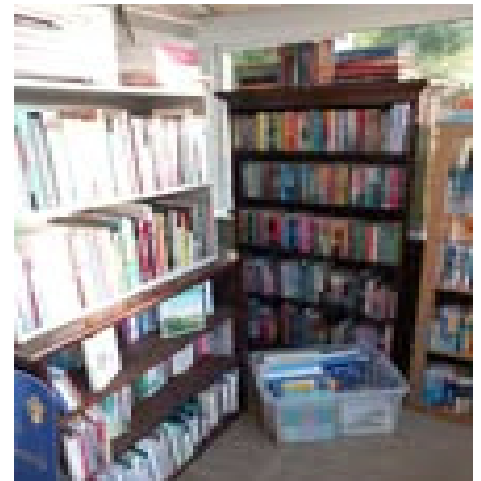
E:matthewpittam@yahoo.co.uk

David 'Snowy' Redfern

of Welford Road

Passed away 15th February 2025

† R.I.P †



DONALD CAMPBELL LANDSCAPES
All aspects of hard landscaping, including stone walling, pergolas, slabbing and patios.
Husbands Bosworth area
Tel. No. 07817 381 244

VICARY PLANT SPARES UK LIMITED

Vicary Plant Spares Uk Ltd
The Old Station
Station Road
North Kilworth
Lutterworth
Leicester
LE17 6HY
01858880219

FORTHCOMING EVENTS

• Saturday March 1 st	Welford Cinema Night, 'Lee' [2023], 7.30pm Welford Village Hall
• Tuesday March 4 th	Art Group, 10.30am - 12.30pm Sports Pavilion
• Tuesday March 4 th	Parish Council meeting, 7.30pm Sports Pavilion
• Wednesday March 5 th	Historical Society meeting with Heather O'Connor, 'A tourist in Japan...', 7.30pm Pavilion
• Monday March 10 th	Mobile library
• Monday March 10 th	Neighbourhood Plan Public Meeting, 7.00pm Sports Pavilion
• Friday March 14 th	Causeway Coffee Morning, 10.00am - 11.30am Sports Pavilion
• Tuesday March 18 th	Art Group, 10.30am - 12.30pm Sports Pavilion
• Monday March 31 st	Mobile library
• Friday April 11 th	Usborne Books @ Bosworth Tots
• Saturday April 26 th	Pudding Evening - Second Helping! 7.00pm Village Hall
• Sunday June 29 th	School Summer Fair
• Sunday August 24 th	Horticulture & Craft Show

LOCAL PLANNING NEWS

The following applications have been submitted to Harborough District Council:

- 25/00166/TCA Works to trees (Fell) 9 Berridges Lane

Recently determined applications:

- 24/01554/FUL [Approved] Change of use, agricultural to accommodation & work to barn, Highcroft House, Leicester Road
- 24/01596/FUL [Approved] Part conversion of garage and associated works to main dwelling, Ostlers Stables, 36 Bell Lane

Current applications may be inspected during normal working hours at the Council Offices, The Symington Building, Adam & Eve Street, Market Harborough or at the Parish Office, 2a Mowsley Road.

Planning applications and other aspects of local government can be viewed on-line at www.harboroughonline.co.uk

GREEN BIN SIGN UP

The garden waste collection service is provided for nine months of the financial year with collections from April to November and the following March of the following year.

Cost of the service

The cost of the service for the April 2025 to March 2026 year is £61 per bin.

Note: We've heard that the subscription doesn't automatically renew and needs to be renewed each year.

For more information in relation to the service, please visit: www.harborough.gov/garden-waste

HARBOROUGH BANKING HUB

*The Symington Building
Adam & Eve Street*

The last active major bank in the town, Lloyds will close shortly, leaving the Market Harborough without a major bank outlet. The district council has agreed to provide space within the Council Offices for a temporary Hub, until a permanent site is found. The Hub will be operated by the Post Office and is open 5 days a week, 9.00am to 5.00pm providing customers of the major banks with transaction facilities, including paying in cash and cheques, withdrawing cash, paying utility bills and balance checks.

A Community Banker service, where customers can talk to their own bank, will also be provided on specified days each week.

Watch this space for further details.



MOBILE LIBRARY

it's all change for the Mobile Library...

New day and times: Monday every three weeks

Stops & Times (See dates above)

Welford Road: 12.05pm - 12.30pm

Butt Lane: 12.40pm - 1.00pm

Mobile library Service 0116 3052695 libraries@leics.gov.uk

District of Harborough



*We collect up to 3 large household items or 12 sacks of waste for a charge of £46.68.
Search: Harborough Bulky Waste*

Feb-25					
Mo	Tu	We	Th	Fr	Sa
				2	
3	4	5	6	7	
10	11	12	13	14	
17	18	19	20	21	
24	25	26	27	28	

'JJ's Kiddycare'



- * GOOD * Ofsted grading
- * Government funded sessions available
- * Full Day Care 0-5yrs
- * Situated on a farm site between South Kilworth and Welford

Tel no. 01858 575642

www.jjs-kiddycare.co.uk

Email: admin@jjs-kiddycare.co.uk

Springfields



**HIGH STREET
HUSBANDS BOSWORTH**

Opening times:
6.00am - 9.00pm
7 days a week
**FREE to use Cash
Dispenser**

National Lottery