

MEMORY LANE

Keen ramblers and local dog walkers will have noticed that a new memorial plaque has recently been installed adjacent to the re-located eucalyptus tree alongside the Butt Lane bridle track.

Together, the memorial tree and the plaque represent our remembrance of the crash of a World War II Wellington bomber, and of the four airmen who lost their lives near this spot, whilst on a training flight in 1943 from the nearby RAF Husbands Bosworth aerodrome. *The re-location of the memorial and production of the information panel was funded by Bosworth Quarry, with the help of the Historical Society.*

STOP PRESS:

We invite the community to join us on Sunday, September 28th at 10.45am for a short, reflective service to re-dedicate the memorial and to remember the casualties of this accident and all those who gave their lives for the freedom we enjoy today.

WE WILL REMEMBER THEM

SHOW TIME...

Last Call!

Husbands Bosworth Horticultural & Craft Show

Sunday, 24th August. Set up for exhibitors from 8.30am. Open to public 2.00pm



cakes and brews!

If you are new to this wonderful village, this really is the community event of the year - where anyone can join in, whatever your age or ability - this is your chance to upend the apple-cart, dislodge the old-timers and walk away with the glory, trophies and accolades! Which reminds us... if you excelled in the competitions and won a cup or trophy last year could you please arrange for them to be returned to 3, Green Lane as soon as possible. (Let me know if you need us to pick them up!)

If you're not exhibiting in the Show, come along and see the incredible displays, wonky veg and produce and partake of our wonderful refreshments.. or just catch up with all the local gossip over a cuppa...

If you've lost the Show Schedule and Showing Tips leaflet that was tucked into last month's *Bugle*, or require another because the dog ate the last one, please let me know and I'll get one to you - just message me.

Karen Ide-Lydiatt 07523 146227 kide.1962@gmail.com



Special thanks to Jones Logging for the 'spade-work'!

OPEN-AIR CHURCH

You are always welcome to enjoy the peace and tranquillity of the romantic ruins of Knaptoft church and memorial gardens at any time. However, we do host regular outdoor services within the ruins throughout the summer months

Our next service will be on Sunday, August 17th at 3.00pm, when Fr. Matthew Pittam, from St. Mary's Roman Catholic Church, Husbands Bosworth, will lead the service, with musical accompaniment by Fleckney Silver Band.

All are welcome!



BUGLE POSTBAG

From Di Jones, Highcroft

Lutterworth Food Bank thanks everyone who supported the last Foodbank in May. You all kindly donated a fantastic 33.28kg.!

All Saints next collection will be at our Harvest Festival Service in the autumn.

From Lisa Jones, VASL Market Harborough

Voluntary Action South Leicestershire is a registered charity based in Market Harborough, and I manage one of the projects - The Community Transport Scheme.

We currently have 42 volunteer drivers, but are desperate for more to keep up with the demand.

We currently have 40 clients in the Husbands Bosworth area that we assist getting to and from hospital and health appointments, but, as only one of our volunteers resides in your area we are desperately looking for more local helpers. If you are interested please get in touch... VASL Car Scheme

Email: transport@vasl.org.uk Tel. 01858 468499

Website: <https://vasl.org.uk/our-projects/about-social-transport>

URGENT:
VOLUNTEER DRIVERS NEEDED!
Help local residents get to vital medical appointments



✓ WE NEED 20 MORE DRIVERS!

- Use your own vehicle
- Expenses reimbursed
- Volunteer when it suits you – no fixed schedule
- Support your community and make a real impact



GET IN TOUCH TODAY
 Contact Lisa or Jo on 01858 468499 or email transport@vasl.org.uk
VASL, Torch House, Torch Way, Market Harborough, LE16 9HL, Eng. County: 114 1224

THE BUGLE TEAM

Editor:

Melvyn Forman

10 Church Lane

Tel: 880281

Email: m.forman@talk21.com

Treasurer & Advertising:

Ralph Horton

18 Highcroft

Tel: 880526

Contacts:

Mike & Sylvia Price

3 Highcroft

07718 052896

Jo Horton

18 Highcroft.

Tel: 880526

Frances Smith

10 Butt Lane

Tel: 880225

Penny Mattock

9 Fernie Court

Tel: 881140

Heather O'Connor

16 Fernie Court

Tel: 880165

Postal Subscription & distribution:

Melvyn Forman

Tel: 880281

Email: m.forman@talk21.com

www.husbandsbosworth.info

COPY DEADLINE
15th OF THE MONTH
PRECEDING PUBLICATION

POLICE FILE



To contact your Dedicated Neighbourhood Team (DNT) online, use the quick and simple online contact tool - Search *Lutterworth Police*. You will be asked a few questions to make sure your query gets to the right place.

LUTTERWORTH BEAT SURGERIES

Friday August 1st 12.00pm - 12.30pm

Lutterworth Leisure Centre

Friday August 1st 2.00pm - 2.30pm

South Kilworth Road, North Kilworth

SOBERING SITE...

Crash Map UK uses Department of Transport information to 'map' crash sites throughout the UK where personal injury or fatalities have been recorded. The records, going back over 25 years, are searchable by locality and relate only to accidents on public roads that are recorded on the police database. The results contain basic information of location, date, time, casualty type, vehicle and driver information (non-specific) and colour-coding to denote the severity of the incident. Search: *Crash Map UK*

Editor's Note: Steer well clear of the A14!

POLICE FILE

Market Harborough & Lutterworth Police

Dedicated Neighbourhood Team

Insp. Liz Perry

Sgt. Charlie Davies

PC James Day

PC James Whittaker

PCSO Steve Adams

**Market Harborough Police Station,
 Fairfield Road,
 Market Harborough 0116 222 2222
harboroughandwigston.npa@leics.police.uk**

CRIMESTOPPERS:

0800 555111

ACTION FRAUD:

www.actionfraud.police.uk

0300 123 2040

FLOWERS BY HEATHER

Husbands Bosworth



*Flowers and floral
 arrangements for any
 occasion*

Call for a free consultation.

Many years experience

in the floral industry.

Follow or like me on

Facebook.

Call me on 07773 063063

COMPLETE CAR CARE

Accident repair specialist

Bodywork, dent, scratch and stone-chip repair

Servicing, alloy refurbishment, welding

MoT repair

Valeting, full body polish

Parking sensors, tyres & exhausts, etc. fitted

Call Ben on 01858 880404

bencompletotecarcare@outlook.com

BOSWORTH IN FOCUS

WILD ABOUT BOSWORTH

We've strayed away from both Bosworth and our usual theme of wildlife that is making a recovery, to wildlife that has declined rapidly over the past 50 years, to look at the water vole. Rarely seen these days, often its presence is only detected by the 'plop' as the furry rodent drops into the water, and the arrow-like wake as it swims feverishly across the canal! Although similar in appearance and size to the brown rat, but with a cute snub nose, chubby face and furry tail, the water vole is all-together more cuddly - its name alone having more favourable connotations than that of the rat!

Children's author, Kenneth Grahame only succeeded in partially bringing this rodent into the cuddlesome sphere, by erroneously introducing him to us as Ratty in *The Wind in the Willows*. You do often hear them referred to as water rats, which unfortunately classes them alongside the lower orders - a classification that they certainly don't deserve.

For a start, they are meticulously clean, and have impeccable toilet habits - pooing in latrines, well away from their neat burrow homes. Their burrows are typically cut into the soft banks of slow-moving rivers or canals, just above the waterline. And, they are tidy eaters - grazing on waterside greenery, often clearing a small 'meadow' close to their homes, distinctively chewed off at their signature 45 degrees - and taking the 'crop' into their burrows for bedding and to feed their growing young.

Unfortunately, the population of water vole has declined dramatically over recent years, partly due to 'improvements' to land drainage and river systems, widely fluctuating river levels and hard banking. The introduction of illegally released mink into the wild has also been identified as a factor in their decline; mink being small enough to enter the small burrows and predate on the offspring.

Thankfully where they have established or maintained a foot-hold, such as on the Ashby Canal, water voles are thriving, but a series of reintroductions, backed by legal protection are re-establishing new colonies from Cheshire to Hampshire.

Although there is little evidence of water voles living locally, recent Canal and River Trust canal bank repairs have usually included installing coir roll soft-edging to encourage the establishment of any itinerant voles that may be looking to relocate to Bosworth...



CHOIR PRACTICE

Foxton Community Choir would like to take this opportunity to thank everyone who supported our Summer Dreamin' concert, on one of the hottest nights of the year so far. It was an evening of great music, love and laughter, with the choir performing a range of toe-tapping tunes from the Mamas and Papas' California Dreamin', a medley of Everly Brothers hits and Bill Joel's And So it Goes, alongside traditional choral pieces such as Irish Blessing and Swing Low Sweet Chariot.

Now, thoughts are already turning to Christmas as we start to decide which Christmas numbers will feature in our performance. The concert date is already set for Friday, December 12th, and will take place at St. Andrew's church in Foxton.

Before then, the choir is running a taster evening on Thursday, September 11th, kicking off at 7.30pm. If you're free on Thursday evenings and looking to make some new local connections, then we'd love to see you there. There are no auditions and subs are very affordable (less than £4 per week), so if you enjoy singing in the shower, then come along and give singing in a fun and friendly community choir a go.

If you'd like more information, please contact Sallie Coventry (07974 978272) or follow us on Facebook to keep up to date on all our news: <https://www.facebook.com/profile.php?id=100086348244518>



NEIL BURKE JOINERY

Supporting
the
Bosworth Bugle



LUTTERWORTH ANTIQUES WE BUY - CASH PAID

IF YOU'RE DOWNSIZING, CLEARING A RELATIVES HOUSE
OR YOU HAVE SINGLE ITEMS TO SELL - CONTACT US:

☎ 01455 249450

✉ jwrightsec@hotmail.com

- | | | |
|--------------|----------------|-------------------------|
| • Antiques | • Vintage | • Unusual Items |
| • Retro | • Jewellery | • Enamel signs |
| • Industrial | • Furniture | • Garden items |
| • Old toys | • Ornaments | • Railway items |
| • Old coins | • Collectables | • Shop cabinets |
| • Silver | • Curiosities | • Advertising signs |
| • Medals | • Military | • Architectural salvage |

And lots more...

Contact us
with any
enquiries!

VISIT OUR SHOP & YARD AT:

Lutterworth Antiques
Leicester Road
Lutterworth
LE17 4HF

OR VISIT

WWW.LUTTERWORTHANTIQUES.CO.UK

OPEN MONDAY - FRIDAY 9AM - 5PM SUNDAY 10AM - 3PM

SCHOOL REPORT

HUSBANDS BOSWORTH C. of E. PRIMARY SCHOOL Head of School Alison Vickers

As we come to the end of the school year, it is a time to say goodbye to the Year 6 pupils; they have been a wonderful year group. They have been hard working, caring, they have made us laugh, they have inspired us with their inquisitive and enthusiastic appetite for learning.

It has been an absolute pleasure to have taught you, year 6 and we know you are now ready for the next part of your school life. We will miss you all but want to wish you all the very best.

We also say a fond farewell to Mr. Eathorne, who has served as Headteacher at Husbands Bosworth and later as Executive Head of the Small Schools Cluster for the past nine years. Husbands Bosworth was his first headship, and he quickly adapted to the role, becoming a deeply valued member of the team.

Leading a small school brings many moments of joy, challenge, and fulfilment but Mr Eathorne embraced it all.

His calm, positive presence, boundless enthusiasm, and quiet kindness were central to everything he did. He also developed strong, lasting connections with the wider community - building relationships with the local churches and parish council, recognising the importance of the village's farming heritage by establishing the school as a farming school, and nurturing a vibrant, committed governing body.

Thank you, Mr. Eathorne, for being such an integral part of Husbands Bosworth's story. We wish you all the very best in your new role as Director of the Institute of Education at Learn@AT. There will always be a warm welcome waiting for you at HB!



BYGONE BOSWORTH

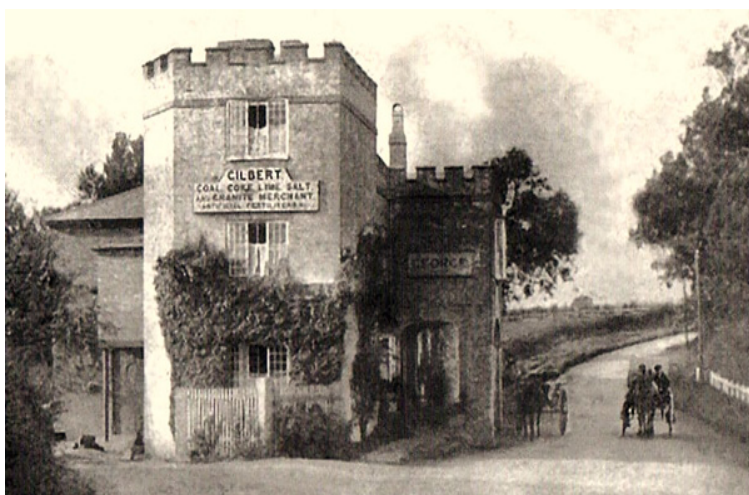
Images from the Historical Society's Archive Collection

This month we look at another recent *eBay* find. Easily recognised in this postcard view, of course, is the Wharf Inn, although at the time of the photograph, around 1910, the premises were still known as The George Inn.

The building, on the Leicester and Northampton turnpike road was probably a stopping off and staging post well before the canal arrived on the scene in 1812, but was no doubt soon enhanced with trade associations linked to its access to the canal. The Gilbert family were firmly established in the businesses at the adjacent wharf from 1891 to about 1947, when a disastrous breach drained the canal. Latterly, Mary Gilbert ran the business following the death of her husband in 1904, trading in limestone and coal from the south Derbyshire area, managing the brickyard, lime-kilns and claypit and running two narrowboats.

Although still in water as a feeder from Welford, Sulby and

Naseby Reservoirs for the Leicester Summit of the Grand Union Canal, the Welford Arm was derelict and abandoned to traffic by 1960. Much pioneering restoration work by the Old Union Canals Society and local volunteers saw the Arm reopen to traffic in April 1969. *It is interesting to note that the premises is noted in newspaper articles as The George as late as 1960, when its sale seems to have prompted the change of name to The Wharf Inn.*



LABC Building Excellence AWARDS 2023 Regional Winner

LAMBERT & WRIGHT BESPOKE PROPERTIES

Lambert & Wright are an award winning Property Renovation Team covering the Midlands. With over 30 years of experience we handle everything from plumbing and electrics to period restoration.

For a free consultation please call or email:- 07866 741261 (Jason) info@lambertandwright.co.uk

LanGuard Vegetation Management
Safeguarding the Environment

All aspects of vegetation management, landscape maintenance and weed control
Urban, highway, sports, industrial and domestic

LanGuard Ltd • Packs Hill Farm • Station Road • Husbands Bosworth • Lutterworth • Leicestershire • LE17 6JN
Tel: 01858 880 898 • Fax: 01858 880 720
Email: info@languard.co.uk

MORE BOSWORTH IN FOCUS

ACTIVITY & INTEREST GROUPS

Art Group

Contact: Melvyn Forman 880281

All Saints Parish Church

Contact: Diana Jones 880741

Causeway Charity

Contact: Heather O'Connor 880165

Craft Group

Contact: Gail Wilmot 880413

Badminton Club

Contact: Ralph Horton 880526

HB School

Contact: Office 880212

Historical Society

Contact: Melvyn Forman 880281

Millennium Woodland Trust

Contact: Jackie Fletcher 880910

Parish Council

Contact: Derek Watson 881109

Playing Field & Pavilion

Contact: Patricia Hobson 0771 2630197

St. Mary's Roman Catholic Church

Contact: Matthew Pittam 01788 833547

Tennis Club

Contact: George Walker 880222

Village Lunch

Contact: Jo Hutton 07534 057575

Village Hall

Bookings: Sue Fisher 880026

HISTORICAL SOCIETY

We kick off our Winter Programme on Wednesday, October 1st, when we will be welcoming local conservation ironworker and blacksmith, Jason Green.

We are a friendly group, meeting at 7.30pm on the first Wednesday of each month at the Sports Pavilion, Kilworth Road, October through to April.

Our programme this season will look a varied selection of subjects, including morris dancing, canal art, conservation bookbinding and the Eleanor Crosses.

Join for the season or just come along to anything that strikes your fancy!

Subscription £15 for the year, or £3 door charge for non-members.

For more information please email: m.forman@talk21.com

CRAFT GROUP

The Craft Group meets on the second Wednesday of each month in the Committee Room of the Village Hall, 7.00pm to 9.00pm.

We are a friendly and informal social gathering of craft-minded people who meet regularly in the village. Come along and pick up new ideas and practise your craft in a relaxed atmosphere away from the distractions of home life.

For details contact Gail on 880413.

OPEN GARDENS

The National Gardens Scheme has no gardens open to the public locally during August. However, for those looking to widen their horizons the garden at 182 Ashby Road, Hinckley [LE10 1SW] opens again this year, over the weekend of 2nd/3rd August, 11.00am to 4.00pm. A cottage-style garden packed with colour and containers full of agapanthus, cannas, banana plants and dahlias - a pond and bog garden and re-imagined uses for reclaimed items add to the interest. For those looking for a further garden 'fix', the garden is only three miles from Gates Woodlands Garden Centre, Stapleton.

Leicestershire National Garden Scheme raised over £67,000, in 2024. For further details on our open gardens, visit www.ngs.org.uk

VILLAGE LUNCH

The next village lunch will be on Wednesday August 27th at the Kilworth Springs Golf Club South Kilworth Road, North Kilworth. We meet at 12.30pm to eat at 1.00pm.

The Village Lunch is a great place for those new to the area, retired or living alone to meet up with old friends, catch up with all the local gossip and make new friends whilst enjoying an excellent home cooked meal in a relaxed and friendly atmosphere.

The cost of the two-course meal including tea/coffee and mints is £13.50 per person. All dietary needs are catered for, please ask for details.

Please call Jo on 07534057575 if you would like to book a place, arrange transport to the venue or for any other information.

Next month's Village Lunch date:

Thursday, September 25th

ART GROUP

Bosworth Art Group is a small, friendly and informal group of arty minded souls meeting on alternate Tuesday mornings, 10.30am to 12.30 in the Sports Pavilion, Kilworth Road. Meetings are on a pay-as-you-go basis, £2.50 per session to cover room hire and coffee.

The group is self tutored and all mediums and skill levels are welcomed.

We will be restarting sessions in October. Interested? For details call Melvyn on 880281.

CAUSEWAY COFFEE

The next Causeway Coffee morning will be on Friday, August 8th.

Causeway Coffee Mornings are held on the second Friday of each month, 10.00am to 11.30am at the Sports Pavilion, Kilworth Road and are open to anyone in the parish who is retired and living alone.

Come along and have a coffee and a piece of cake with us, have a chat and browse our extensive jigsaw and book library.

If you hear of anyone living locally who may be alone, vulnerable or needing support let the Causeway team know...



Carol Bartlett, Volunteer Press Officer

HAIR BY LYNNDY

Award winning hair stylist & colour specialist



"Now welcoming everybody to my hair studio in Husbands Bosworth for cuts, colours, blow-dries & wedding hair"



Appointment only - 07808 513283

lynndy@hairbylynndy.com

PATRICIA LAVELLE



Foot Therapy Clinic



Reflexology



Elite Medical Foot Care

Laura Lane Studios, 43 High Street, Market Harborough LE16 7AQ
www.PatriciaLavelle.co.uk Email: Hello@PatriciaLavelle.co.uk

PARISH COUNCIL NEWS

The next meeting of the Parish Council will be on Tuesday, August 5th at 7.30pm at the Sports Pavilion, Kilworth Road. Any queries relating to Parish Council business should be directed to the Parish Clerk, Derek Watson, telephone 881109, email: clerk@husbandsbosworthpc.org.uk

Temporary Traffic Regulation Order

Mill Lane, Husbands Bosworth

A Temporary Traffic Regulation Order (TTRO) is to be made for the following location: From A4304 Kilworth Road to Station Road, Husbands Bosworth.

The purpose of the TTRO is to allow National Grid to undertake pole change works.

The TTRO will incorporate a temporary road closure.

The duration of the restriction is not anticipated to exceed a period of one day, commencing on Wednesday, August 20th 2025.

A Press Release will be issued to confirm these details approximately two weeks prior to the works commencing.

Weblink: <https://one.network/?tm=GB144024770>

Should you require any further information please contact our Customer Services Centre by using our online Contact Form or by calling 0116 305 0001

TENNIS COURTS

Users of the village tennis courts on the Playing Field are reminded that the courts must only be used for tennis related activities.

This facility is provided free to use by the Parish Council and is open to all - please respect the courts and ensure that after use they are kept clean and in good order for future users. Anyone who sees inappropriate behaviour on the courts, or anywhere in the Playing Field or any of the recreational areas is urged to contact the Parish Clerk.

PARISH OFFICE

Husbands Bosworth Parish Office is located at 2a, Mowsley Road.

The Parish Clerk is Derek Watson.

Hours of business are normally Monday morning, Tuesday morning, Wednesday all day and Thursday morning. *(Please note that the Parish Clerk may be out of office on parish business for short periods during these hours)*

The Clerk can be contacted by email at: clerk@husbandsbosworthpc.org.uk

If you do not have access to email, a voicemail can be left at 01858 881109. This phone number is regularly checked for messages.

LOCAL OFFICERS

Husbands Bosworth Parish Council:

Councillors

Patricia Hobson (Chair)
07712 630197

James Bolter
Melvyn Forman
Gareth Peel
Kay Gallagher
Thomas East

Parish Clerk

Derek Watson
2a Mowsley Road
H.B. LE17 6LR Tel: 881109

clerk@husbandsbosworthpc.org.uk

District Councillor

Amanda Nunn
a.nunn@harborough.gov.uk

Member of Parliament

Alberto Costa
Tel: 01455 283594
office@albertocosta.org.uk



Withdrawal of Neighbourhood Planning Grant Funding

In the Chancellor's recent Spending Review it was announced that central government funding for new Neighbourhood Plans would be withdrawn. Fortunately funding already in place, as is the case with Husbands Bosworth's Neighbourhood Plan Review, is not affected.

Furthermore, Harborough District Council has confirmed that Plans within the district, and in the pipeline, will continue to be supported with advice and guidance, through to examination and referendum. It is expected that Plans or reviews at an advanced stage will be supported by Parish Councils where a shortfall in funding is encountered.

ROAD CLOSURE

Welford High Street

Anglian Water have advised that Welford High Street will be closed to through traffic on Monday, September 8th for one day in order to enable contractors to carry out essential ground works.

Notices and diversionary routes will be in place two weeks prior.

F&W Plumbing & Heating Services Ltd

Based in North Kilworth

- ❑ Bespoke bathroom & kitchen design and installation
- ❑ All types of wall and floor tiling
- ❑ Hot and cold water systems
- ❑ Unvented hot water systems

Contact Jason on 07866741261

Email: jasonfandw@hotmail.com

www.fandwplumbingandheatingservices.co.uk

Over 30 years experience in designing and installing contemporary and traditional kitchens and bathrooms

Project manage personally with all associated trades for a co-ordinated high quality finish with minimum disruption

PAXFORD ELECTRICAL	Qualified to 18th Edition BS7671 & City & Guilds 2391 for Inspection & Test Part P Registered Reliable Professional Friendly	Electrical Services: <ul style="list-style-type: none">• Installation Maintenance and electrical repair to home electrics• Consumer units, Fuse boards, & EICR's• Lighting repair or replacement, security lighting• Switches and sockets• Cooker and shower circuits• Pull cords, fans and timers• Nuisance tripping, fault finding and diagnosis Handyman services include, but not limited to: <ul style="list-style-type: none">• Carpentry, doors eased, locks replaced etc• Central Heating electricals• Showers and fans replaced• Plumbing and leak repairs• Data & CCTV	PAXFORD ELECTRICAL
	Call John for a free quotation: 07866 761937 Or email paxfordjohn@gmail.com		

CHURCH NEWS

All Saints Parish Church & St. Mary's Roman Catholic Church

ALL SAINTS CHURCH NEWS

Rev. Stephen Marsh's last service in the Hexagon Benefice will be on August 3rd at St. Peter's Arnesby. (Note that Arnesby and Shearsby have changed their service dates because of holidays.)

Stephen's last service at Husbands Bosworth will be our regular Wednesday service at 10.00 on July 30th, when he will conclude with a blessing of the clock, which was refurbished earlier this year. Those of us who come regularly to the Wednesday service will be delighted to learn that this service will continue in the immediate future.

The Benefice PCCs have made donations towards a leaving present for Stephen and Sharon and of course anyone who wishes may also make a personal donation. Cheques should be made out to Husbands Bosworth PCC and may be posted through my letter box at 28 Marsh Drive, Husbands Bosworth; or contact the Treasurer, Jeremy Ingram, by text or call him on 07759 978463 or by email at Treasurerallsaintshb@gmail.com for the PCC bank account details for an online transfer (preferred method). I hope there may just be time after this issue of the *Bugle* is distributed and before August 3rd.

A meeting was held in June at Lutterworth to determine the likely arrangements for the new Minster Communities (MC) in the Diocese. All Saints PCC have asked to join the Lutterworth-based Minster in order that the links with our primary school, established with All Saints and encouraged by our *Open the Book* team, will be maintained as they grow up, since most go to secondary school in Lutterworth. There is still much to be done and it will be a while before we know how the new arrangements will work and what services will be possible here at All Saints.

There will be a meeting to set up the Friends of All Saints Church on September 17th in the Village Hall starting at 7.30pm. Everyone is welcome whether or not you have indicated interest.

Peter Bugge (Churchwarden)

RIDE AND STRIDE

Saturday, September 13th

Ride and Stride is an annual fund raising event in aid of local churches and the Historic Churches Trust. Riders (and striders!) are invited seek sponsorship and visit as many churches as they can in a day. It is a great way to visit churches and other places of worship that may not usually be open, especially ones off the beaten track!

Funds raised are shared equally between the participating churches and the Trust, helping to maintain the fabric of the buildings.

All Saints Church will be open all day - for riders, striders or casual visitors, when drinks and homemade cakes will be on offer...

If you are new to the village, this is a great opportunity to introduce yourself to our wonderful church - you will be very welcome to come and have a look around, and enjoy a cuppa!

SONGS OF PRAISE

Sunday, August 24th 10.30am

All Saints will be hosting a Songs of Praise service to which everyone is very welcome. You can request a special hymn - just write down the reason for your choice, such as a special person, a special day, event, or maybe it is just that the words mean something to you.

Please contact the Church Wardens Peter 01858 437929 or Jeremy 07759 978463

'JJ's Kiddycare'



- * GOOD * Ofsted grading
- * Government funded sessions available
- * Full Day Care 0-5yrs
- * Situated on a farm site between South Kilworth and Welford

Tel no. 01858 575642

www.jjs-kiddycare.co.uk

Email: admin@jjs-kiddycare.co.uk

†CHURCH SERVICES †

Hexagon Benefice

August

3	St. Peter's Arnesby 10.30am
10	St. Mary's B'thorpe 10.30am
17	All Saints Thedd. 10.30am
	Knaptoft 3.00pm
24	Husbands Bosworth 10.30am
31	St. Peter's Arnesby 10.30am

All Saints Church invites you to an informal mid-week communion every Wednesday 10.00am

Coffee/teas served afterwards

Churchwardens:

Peter Bugge

Jeremy Ingram

www.allsaintschurhhusbandsbosworth

St Mary's Roman Catholic Church

Contact:

Fr. Matthew Pittam 01788 833547

E: matthewpittam@yahoo.co.uk

Parish Notices

Andrew Lambert

of Lammas Close

Passed away 30th June 2025

Age 71 years

Pauline Knight

of Kilworth Road

passed away July 16th 2025

Age 91 years

† R.I.P †

ST. MARY'S NEWS

Mass Services

Sunday Mass 8.00am and 10.00am

Tuesday & Thursday 10.00am

Wednesday 7.00pm

Evensong every Wednesday at 6.30pm

Morning Prayer 9.30am Tuesday and Thursday.

Sunday, 17th August Parish Garden Party and BBQ, Bosworth Hall after our 10.00am Mass. Please email Fr Matthew for tickets

Father Matthew †

BEGLEY'S
Established 50 Years
GENERAL JOINERY SPECIALISTS



Free estimates
All items can be viewed at Shearsby Workshop

Tel: 0116 2478755 (day)
01858 880569 (eve)
Email: andybeg@hotmail.co.uk

FORTHCOMING EVENTS

Saturday August 2 nd	Friends of Welford Arm work-party, meet Welford Wharf, 9.30am
Tuesday August 5 th	Parish Council Ordinary Meeting, 7.30pm Pavilion
Monday August 4 th	Mobile library
Friday August 8 th	Causeway Coffee, Sports Pavilion 10.00am - 11.30am
Sunday, August 17 th	St Mary's Church Garden Party & BBQ, Bosworth Hall 10.00am
Sunday August 24 th	Horticulture & Craft Show. Exhibitors from 8.30am, Doors open to the public 2.00pm VH
Wednesday August 27 th	Village Lunch, Kilworth Springs Golf Club, 12.30pm
Wednesday August 27 th	Mobile library
Saturday September 13 th	Historic Churches Ride & Stride Open Church Fund raiser, 10.00am to 6.00pm
Wednesday September 17 th	Friends of All Saints Church open meeting, 7.30pm VH
Thursday September 25 th	Village Lunch
Sunday September 28 th	Re-dedication of the Wellington bomber memorial
Wednesday October 1 st	Historical Society opening meeting

LOCAL PLANNING NEWS

The following applications have been submitted to Harborough District Council:

- 25/00099/FUL Erection of worker's accommodation and retain existing cabin as staff amenity and W/C, Lavender Lakes, Leicester Road
- 25/00647/FUL [*Withdrawn*] Erection of rear extension to existing and erection of two dwellings, 5 Green Lane
- 25/00789/FUL Changes and additions to hard-surfacing, drainage and surface water separation. Land off Leicester Road
- 25/00794/FUL Demolition of existing side extension and erection of single storey side extension, Wheler Grange, Welford Road
- 25/00872/FUL Remove exist. brick building and replace with lean-to (on the same footprint), Oak Lodge Grain Store, Welford Road

Recently determined applications:

- 25/00454/ADV [*Approved*] Installation of 1x externally illuminated hanging sign, 1x fascia sign, 2 x externally illuminated amenity signs, externally illuminated sign-writing to gable, repainting of letters to existing arch frame, and installation of LED Flood Lights (6no), aged iron barn lights (2no) and trough lights (2no), Bell Inn, 2 Kilworth Road
- 25/00567/VAC [*Approved*] Change of use from agricultural to accommodation, incorporating bat mitigation measures, Highcroft House, Leicester Road
- 25/00774/AGR [*Approved*] Prior notification for erection of a general purpose agricultural building, Land off Welford Road

Current applications may be inspected during normal working hours at the Council Offices, The Symington Building, Adam & Eve Street, Market Harborough or at the Parish Office, 2a Mowsley Road.

Planning applications can be viewed on-line at www.harborough.gov.uk/planning

BANK BREAKING NEWS!

The Harborough Banking Hub, which has been located temporarily in the Symington Building in Market Harborough since March, is set to move to a permanent location at 1 St. Mary's Place. The hub is funded by various banks and overseen by the Post Office, providing basic banking services.

For the time being services are still operating from The Symington Building, Adam & Eve Street, 9.00am - 12.00pm and 1.00pm - 5.00pm

- | | |
|---------------------------|----------------------------|
| *Monday: <i>Natwest</i> | *Tuesday: <i>Santander</i> |
| *Wednesday: <i>Lloyds</i> | *Thursday: <i>HSBC</i> |
| *Friday: <i>Barclays</i> | |

MOBILE LIBRARY

Visiting library times: Monday every three weeks

Stops & Times (See dates above)

Welford Road: 12.05pm - 12.30pm

Butt Lane: 12.40pm - 1.00pm

Mobile library Service 0116 3052695 libraries@leics.gov.uk

District of Harborough



We collect up to 3 large household items or 12 sacks of waste for a charge of £46.68.
Search: Harborough Bulky Waste

Aug-25							
Mo	Tu	We	Th	Fr	Sa	Su	
4	5	6	7	8			
11	12	13	14	15			
18	19	20	21	22			
25	26	27	28	29			

DONALD CAMPBELL LANDSCAPES

All aspects of hard landscaping, including stone walling, pergolas, slabbing and patios. Husbands Bosworth area

Tel. No. 07817 381 244



Vicary Plant Spares Uk Ltd

**The Old Station
Station Road
North Kilworth
Lutterworth
Leicester
LE17 6HY
01858880219**

